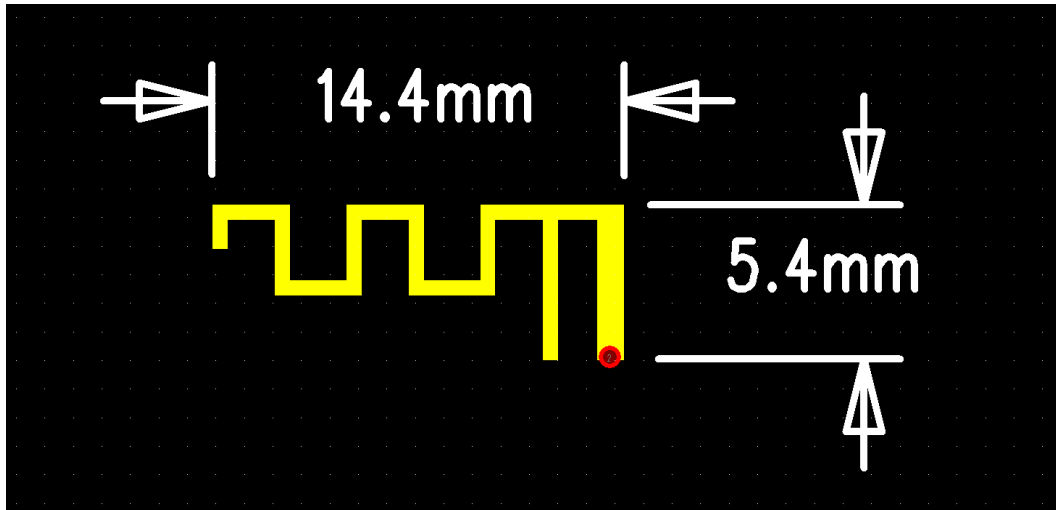


Corporation: Beijing Hongsheng Technology Co. , Ltd.

Address: 101-37, 2nd Floor, Building 5, Yard 11, Xinyu 3rd Street,  
Tongzhou District, Beijing 100000, CN



Dimension (mm)

## 2.4GHz ANT-S-L Antenna

Material: Copper

Operating frequency: 2.4GHz-2.5GHz

Mode: Single pole single feed

Antenna type: Internal antenna

Central frequency point: 2.45GHz

Loop (echo) loss: -6.8 (Max) Db

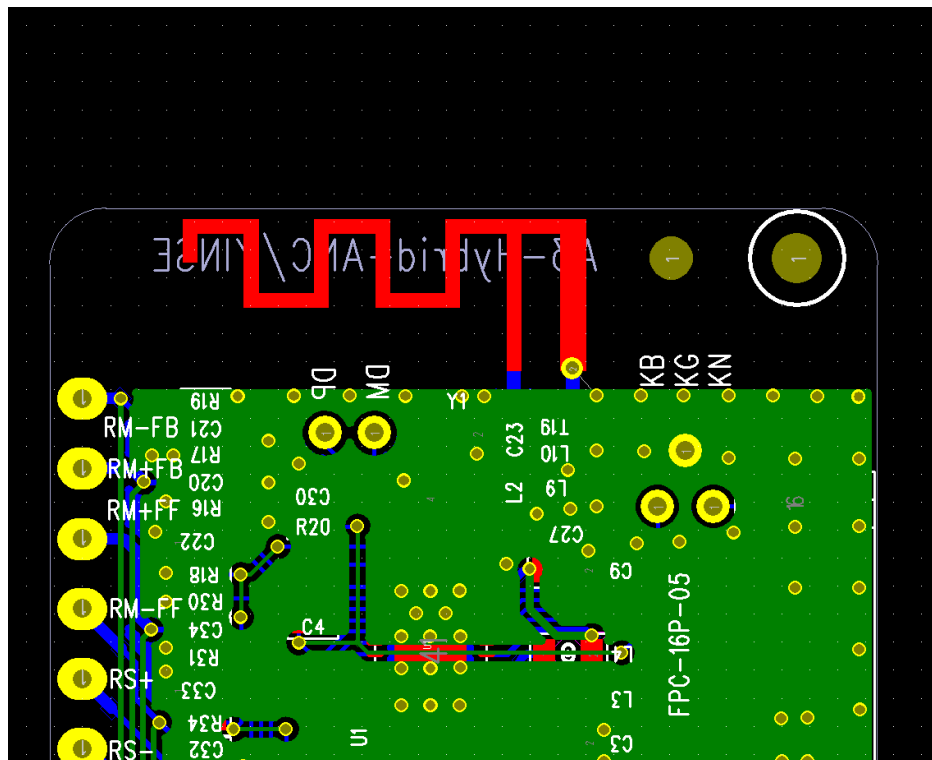
Gain value: 3.87dBi

Impedance: 50 Ohm

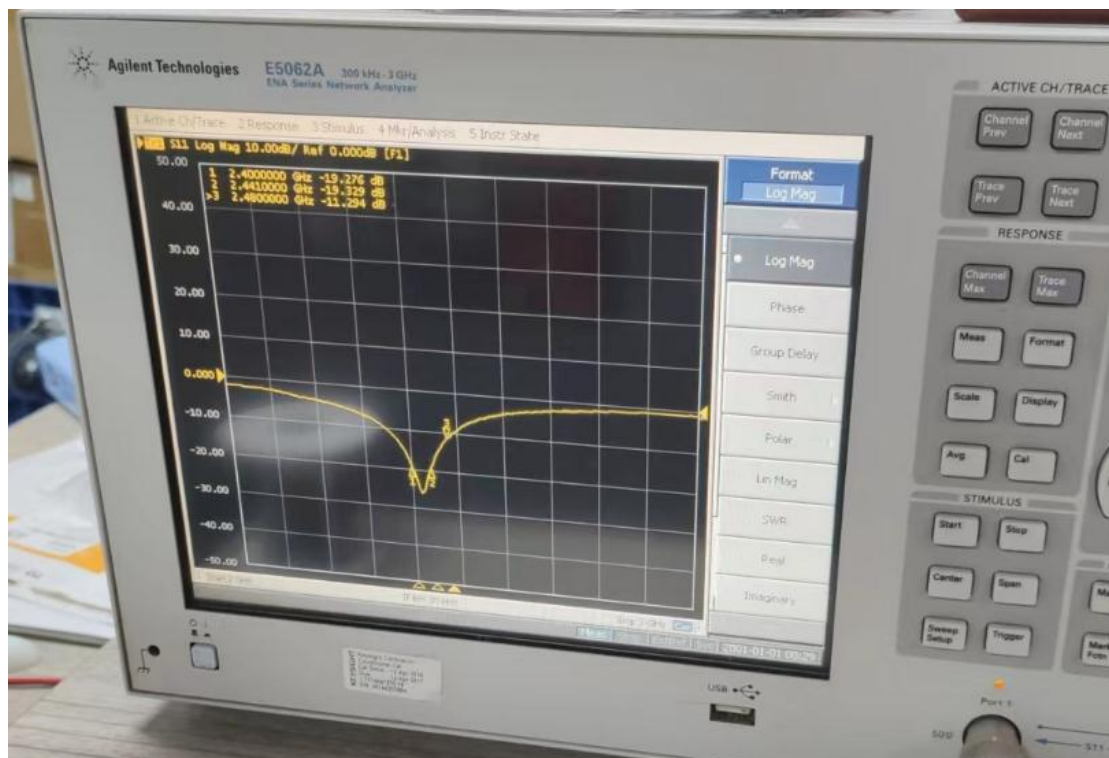
Ambient temperature: -40 ~ +85 °C

Maximum power: 4 W

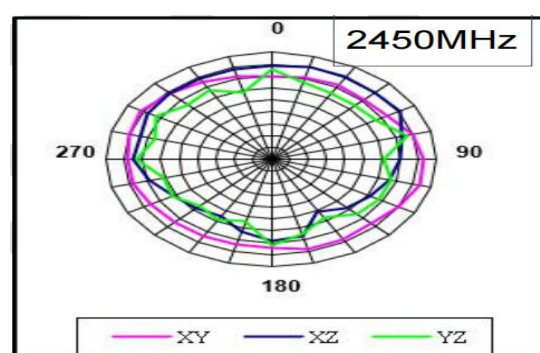
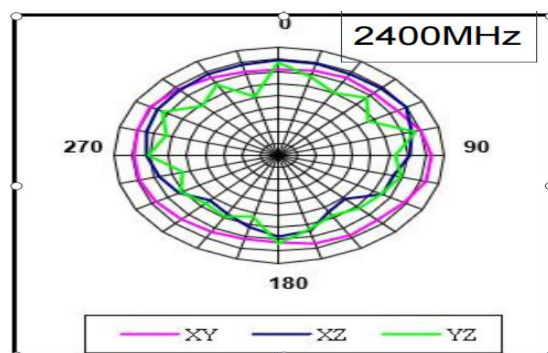
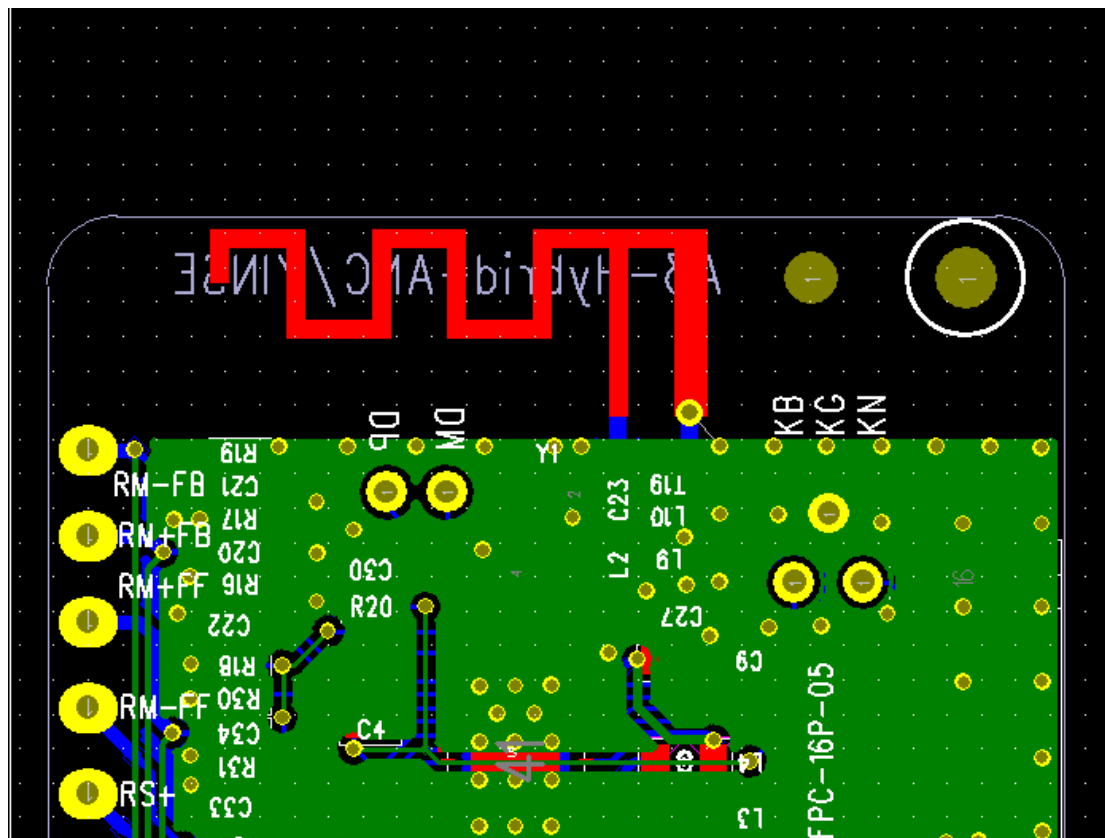
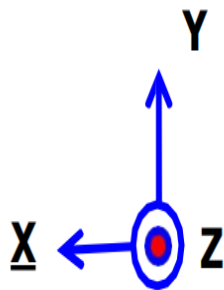
## Design pattern

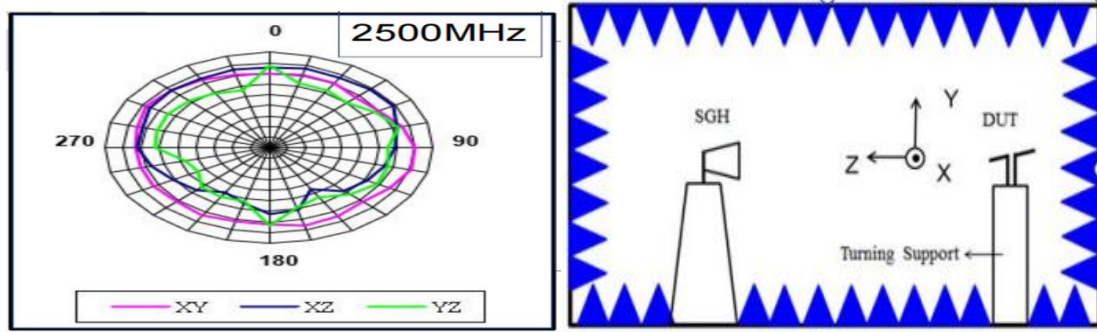


## Measurement results:



Radiation field type:





2400MHz -Efficiency:62.15 % Peak Gain: 2.74 dBi Directivity: 5.91 dBi

2450MHz -Efficiency:68.90 % Peak Gain: 3.87 dBi Directivity: 6.28 dBi

2500MHz -Efficiency:54.27 % Peak Gain: 2.16 dBi Directivity: 5.60 dBi