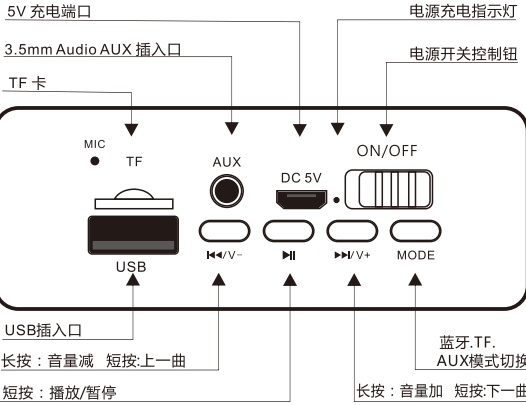


G系列音箱产品
快速指南

尊敬的用户：

感谢您购买我司生产的蓝牙音箱，非常感谢您对我们的支持！请您在使用之前务
必仔细阅读本手册，我司对因使用不当造成的人身伤害或产品损坏不承担任何责任。

音箱操控示意图



使用说明：



蓝牙连接



技术参数：

内置锂电池电压： 5V
喇叭规格： 52mm 4Ω 5W
电池容量： 1200mAh
频 响： 60Hz-18KHz
充电电压： DC 5V
信噪比： ≥75dB

语音智能指南：

1. 请扫描左侧二维码下载“小云助手”APP 或直接在应用商店搜索“小云助手”下载小云助手APP
(下载登录后，并允许弹出的所有权限)
2. 连接设备与手机APP,请在手机设置中打开蓝牙开关，连接名称为“G-Speaker”的设备。打开“小云助手”APP后等待QQ音乐授权跳转，（如未下载安装QQ音乐，请先下载QQ音乐），即可说“你好小云”然后说出你的需求的语音进行交互。
(注：此语音智能使用说明，仅使用于智能版)

时钟版指南：

你购买的我司产品带有时钟功能，若时钟显示和您所在的时区对比有时间差异；请取出时钟调节到您所在时区的准确时间。然后再装回原来的位置即可。
(注：此时钟功能使用说明，仅使用于时钟版)

温馨提示：

- 为防止任何火灾或电气危险，请勿自行拆卸更换零部件，产品有损坏时，请您与专业维修人员或指定维修中心进行联系维修。
- 1、请勿将产品置于雨、水或者潮湿处，保持产品干燥；
 - 2、请勿将液体溅到或者靠近产品；
 - 3、请勿将产品放置在靠近火源处，例如蜡烛或者其他明火源；
 - 4、请将产品放置在平稳的水平面上；
 - 5、在本产品长时间不使用的情况下，为了延长电池寿命，请30天内给本产品充电一次电。

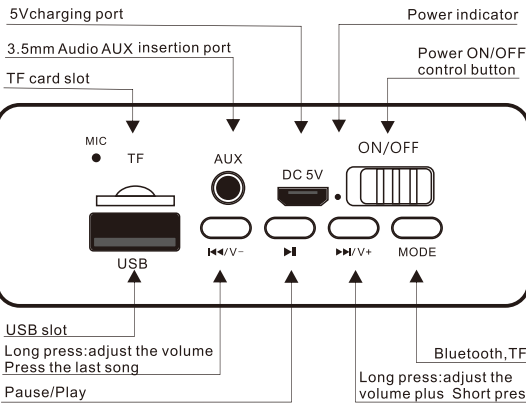


Bluetooth speaker
Product manual

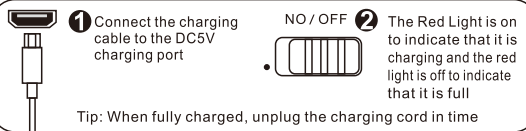
Respected users:

thank you for purchasing our production of Bluetooth speakers, thank you for your support to us! Please read this manual carefully before use. We are not responsible for any personal injury or product damage caused by improper use.

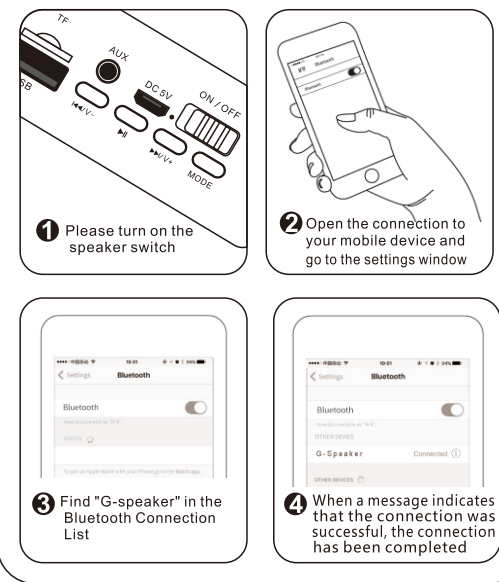
Schematic diagram of control panel



How to charge



Bluetooth connection



Specification

Built-in Battery voltage: 3.7V
Battery Capacity: 1200mAh
Charging voltage: 5V 500mA
Speaker driver: 52mm 4Ω 5W
Frequency response: 60Hz-18KHz
S/N Ratio: ≥65dB

Speaker with clock

You buy and sell our products with a clock function, if the clock display and your time zone, the time is not accurate; please take out the clock to adjust the exact time in your time zone. And then put it back where it belongs.

(Note: This Bluetooth Speaker clock function is for the clock version only)

Points to note

In order to prevent any fire or electrical danger, please don't disassemble and replace the parts by yourself. If the product is damaged, please contact the professional repairman or the appointed maintenance center.

1. Do not leave the product in the rain, water or damp place, keep the product dry;
2. Do Not pour liquids on or near the product
3. Do not place the product near a fire source, such as a candle or other open flame
4. Place the product on a level surface
5. In the case of this product is not used for a long time, in order to extend the battery life, please charge this product once within 30 days.

FCC warning:

1. This device should be installed and operated with minimum distance 0cm between the radiator&your body.
2. This device complies with part 15 of the FCC Rules. Operation is subject to the following two conditions:
 - (1) This device may not cause harmful interference, and
 - (2) This device must accept any interference received, including interference that may cause undesired operation.
3. Changes or modifications not expressly approved by the party responsible for compliance could void the user's authority to operate the equipment.
4. This equipment has been tested and found to comply with the limits for a Class B digital device, pursuant to part 15 of the FCC Rules. These limits are designed to provide reasonable protection against harmful interference in a residential installation. This equipment generates, uses and can radiate radio frequency energy and, if not installed and used in accordance with the instructions, may cause harmful interference to radio communications. However, there is no guarantee that interference will not occur in a particular installation. If this equipment does cause harmful interference to radio or television reception, which can be determined by turning the equipment off and on, the user is encouraged to try to correct the interference by one or more of the following measures:
 - Reorient or relocate the receiving antenna.
 - Increase the separation between the equipment and receiver.
 - Connect the equipment into an outlet on a circuit different from that to which the receiver is connected.
 - Consult the dealer or an experienced radio/TV technician for help.