

# Product Similarity Declaration

Applicant: Shenzhen Shihe intelligent Technology Co., LTD

Address: Jiangshi Building 1301, No.4 Xintian Avenue, Xintian Community, Fuhai Street, Baoan District, Shenzhen, China

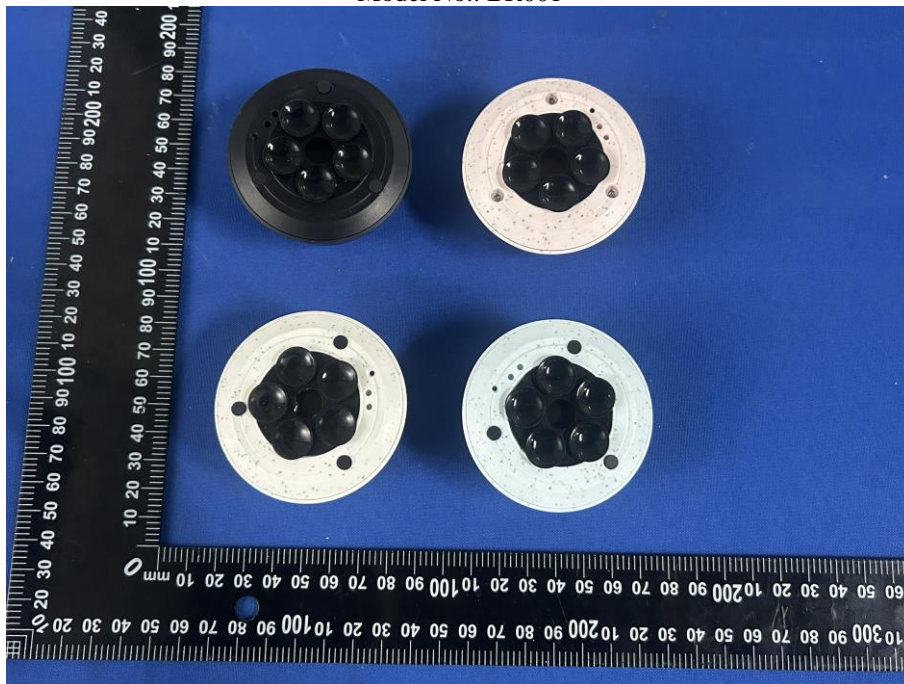
Product: Wireless Waterproof Speaker

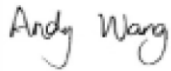
Trade Mark: N/A

Model No.: BR001  
BR002, BR003, BR004, BR005, BR006, BR007, BR008, BR009, BR010

We (Shenzhen Shihe intelligent Technology Co., LTD ) hereby state that all the models are electrical identical including the same software parameter and hardware design (i.e., circuit design, PCB Layout, RF module/circuit, antenna type(s) and antenna location, components on PCB, etc.), same mechanical structure and design (including product enclosure, materials, etc.), All models are the same as the samples except for the model names and appearance color.

Model No.: BR001



<Signature>: 

Name: Andy Wang

Title: CEO

Company: Shenzhen Shihe intelligent Technology Co., LTD