

Quick Setup Guide

Indoor WiFi PT Camera

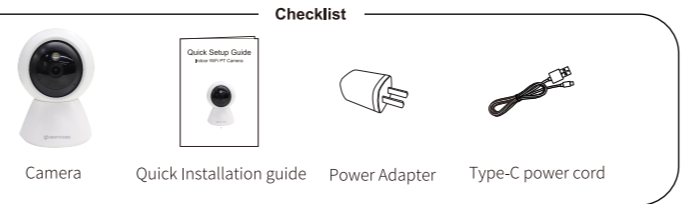


The content described in this setup guide may be different from the version you are currently using, If you encounter problems that cannot be solved when using this setup guide, please contact our company's technical support or product seller.

Due to product upgrades and other reasons, this guide may be updated from time to time without prior notice.

Set up your Indoor WiFi PT Camera

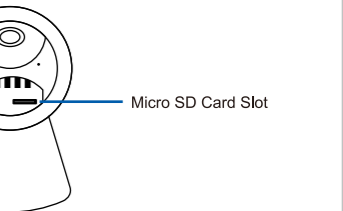
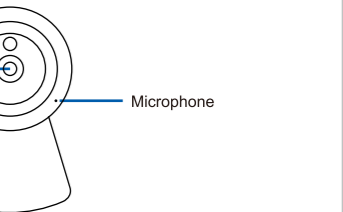
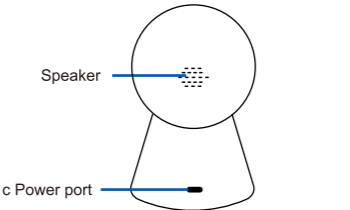
1. Getting Started



Safety Warning:

- It is recommended that you regularly change your device password and APP account password, Please use a combination of numbers, letters, and special characters for your password.
- We recommend that you regularly update your camera to the latest software and firmware versions to ensure you get the best experience with your camera.

2. Appearance introduction



Reset

Micro SD Card Slot

Microphone

Speaker

Type-c Power port

Lens

Microphone

Speaker

Type-c Power port

Lens

Microphone

Speaker

Type-c Power port

Lens

Microphone

Speaker

Type-c Power port

Lens

Microphone

Speaker

Type-c Power port

Lens

Microphone

Speaker

Type-c Power port

Lens

Microphone

Speaker

Type-c Power port

Lens

Microphone

Speaker

Type-c Power port

Lens

Microphone

Speaker

Type-c Power port

Lens

Microphone

Speaker

Type-c Power port

Lens

Microphone

Speaker

Type-c Power port

Lens

Microphone

Speaker

Type-c Power port

Lens

Microphone

Speaker

Type-c Power port

Lens

Microphone

Speaker

Type-c Power port

Lens

Microphone

Speaker

Type-c Power port

Lens

Microphone

Speaker

Type-c Power port

Lens

Microphone

Speaker

Type-c Power port

Lens

Microphone

Speaker

Type-c Power port

Lens

Microphone

Speaker

Type-c Power port

Lens

Microphone

Speaker

Type-c Power port

Lens

Microphone

Speaker

Type-c Power port

Lens

Microphone

Speaker

Type-c Power port

Lens

Microphone

Speaker

Type-c Power port

Lens

Microphone

Speaker

Type-c Power port

Lens

Microphone

Speaker

Type-c Power port

Lens

Microphone

Speaker

Type-c Power port

Lens

Microphone

Speaker

Type-c Power port

Lens

Microphone

Speaker

Type-c Power port

Lens

Microphone

Speaker

Type-c Power port

Lens

Microphone

Speaker

Type-c Power port

Lens

Microphone

Speaker

Type-c Power port

Lens

Microphone

Speaker

Type-c Power port

Lens

Microphone

Speaker

Type-c Power port

Lens

Microphone

Speaker

Type-c Power port

Lens

Microphone

Speaker

Type-c Power port

Lens

Microphone

Speaker

Type-c Power port

Lens

Microphone

Speaker

Type-c Power port

Lens

Microphone

Speaker

Type-c Power port

Lens

Microphone

Speaker

Type-c Power port

Lens

Microphone

Speaker

Type-c Power port

Lens

Microphone

Speaker

Type-c Power port

Lens

Microphone

Speaker

Type-c Power port

Lens

Microphone

Speaker

Type-c Power port

Lens

Microphone

Speaker

Type-c Power port

Lens

Microphone

Speaker

Type-c Power port

Lens

Microphone

Speaker

Type-c Power port

Lens

Microphone

Speaker

Type-c Power port

Lens

Microphone

Speaker

Type-c Power port

Lens

Microphone

Speaker

Type-c Power port

Lens

Microphone

Speaker

Type-c Power port

Lens

Microphone

Speaker

Type-c Power port

Lens

Microphone

Speaker

Type-c Power port

Lens

Microphone

Speaker

Type-c Power port

Lens

Microphone

Speaker

Type-c Power port

Lens

Microphone

Speaker

Type-c Power port

Lens

Microphone

Speaker

Type-c Power port

Lens

Microphone

Speaker

Type-c Power port

Lens

Microphone

Speaker

Type-c Power port

Lens

Microphone

Speaker

Type-c Power port

Lens

Microphone

Speaker

Type-c Power port

Lens

Microphone

Speaker

Type-c Power port

Lens

Microphone

Speaker

Type-c Power port

Lens

Microphone

Speaker

Type-c Power port

Lens

Microphone

Speaker

Type-c Power port

Lens

Microphone

Speaker

Type-c Power port

Lens

Microphone

Speaker

Type-c Power port

Lens

Microphone

Speaker

Type-c Power port

Lens

Microphone

Speaker

Type-c Power port

Lens

Microphone

Speaker

Type-c Power port

Lens

Microphone

Speaker

Type-c Power port

Lens

Microphone

Speaker

Type-c Power port

Lens

Microphone

Speaker

Type-c Power port

Lens

Microphone

Speaker

Type-c Power port

Lens

Microphone

Speaker

Type-c Power port

Lens

Microphone

Speaker

Type-c Power port

Lens

Microphone

Speaker

Type-c Power port

Lens

Microphone

Speaker

Type-c Power port

Lens

Microphone

Speaker

Type-c Power port

Lens

Microphone

Speaker

Type-c Power port

Lens

Microphone

Speaker

Type-c Power port

Lens

Microphone

Speaker

Type-c Power port

Lens

Microphone

Speaker

Type-c Power port

Lens

Microphone

Speaker

Type-c Power port

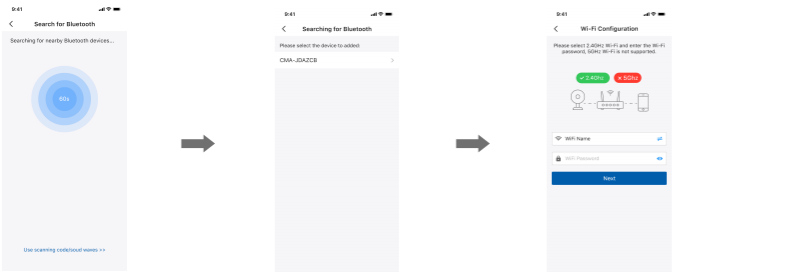
Lens

Microphone

Speaker

Type-c Power port

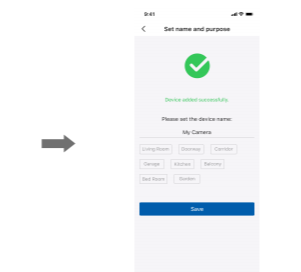
Lens



wait for the APP to search for the device.

5. Select equipment

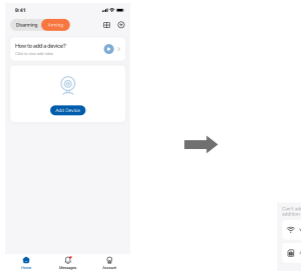
6. Please configure the Wi-Fi name and password



7. Connecting

8. The device is added successfully, please give the device a name.

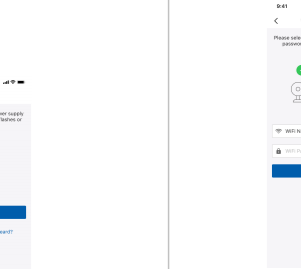
• Add device: Wi-Fi Add



1. Click "Add Device"

2. Choose "Wi-Fi Add"

3. Please follow the instructions on the page, confirm and click Next

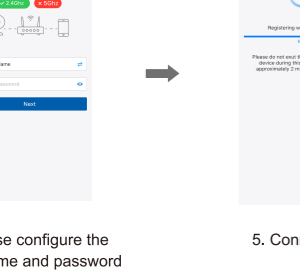


4. Please configure the Wi-Fi name and password

5. Connecting

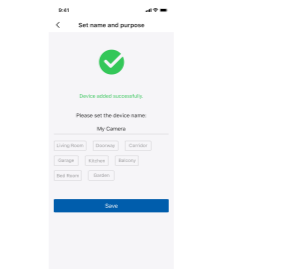
6. The device is added successfully, please give the device a name.

Note: If the process of adding a camera fails, please press and hold the reset button for 3-5 seconds to reset the camera, and try adding again according to the above method.



7. Connecting

8. The device is added successfully, please give the device a name.

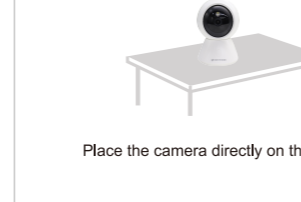


4. Please configure the Wi-Fi name and password

5. Connecting

6. The device is added successfully, please give the device a name.

Note: If the process of adding a camera fails, please press and hold the reset button for 3-5 seconds to reset the camera, and try adding again according to the above method.



7. Connecting

8. The device is added successfully, please give the device a name.

Note: If the process of adding a camera fails, please press and hold the reset button for 3-5 seconds to reset the camera, and try adding again according to the above method.

5. Hardware installation



Place the camera directly on the table.



Install the mounting plate (not standard) on the wall or ceiling with the provided fixing screws.

Note: Align points A and B to insert the camera base onto the mounting plate, Rotate so that point a and point b are aligned, then securely connect the camera to the base.

6. Safety tips

- Before using the camera, make sure you are using an appropriate power source.
- Please use the provided screws to ensure safe use of the camera and bracket.

7. Frequently Asked Questions

1. What is the minimum bandwidth required to view real-time video?

(1) In order to ensure the smoothness of viewing real-time video, it is recommended that the upload bandwidth is not less than 512kbps.

(2) The real-time video traffic is about 2MB/minute, After turning on the sound, it will increase by about 0,4MB per minute.

2. Why can't I store and read videos normally even after inserting a Micro SD(TF) card?

Kingston 8G/16G/32G

SanDisk 16G/32G/64G/128G

PNY 16G/32G/64G/128G