

Quick Start Manual

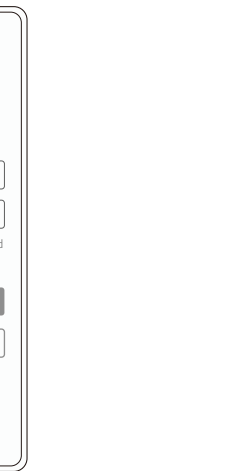
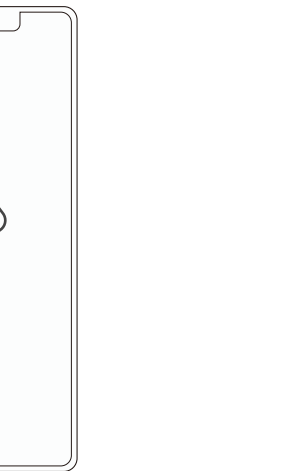
Wi-Fi camera



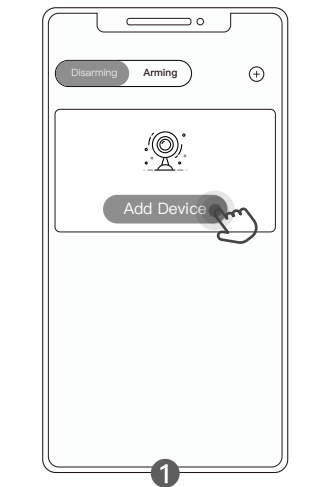
Please scan the QR code above to download

"HUNTVISION" APP

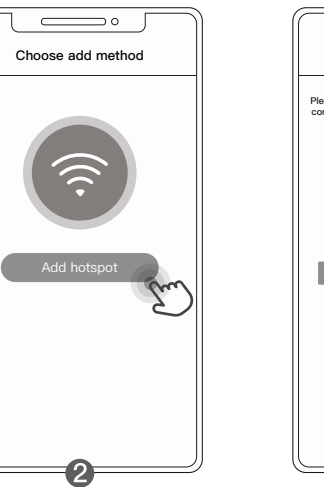
1. Open HUNTVISION app and register an account, or log in (if you already have an account).



2. Add device: Add hotspot

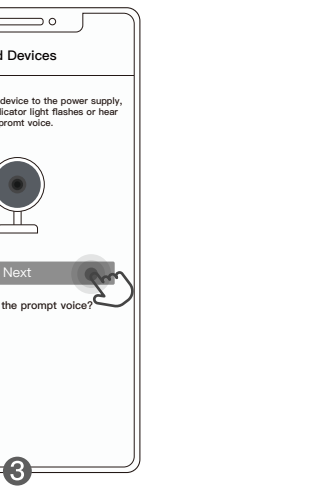


Click "Add Device"



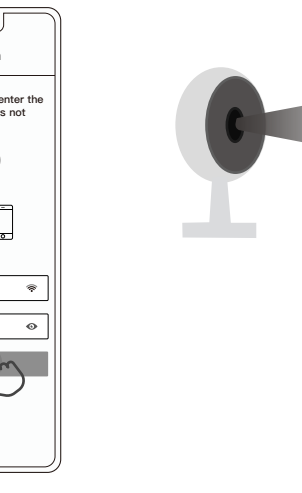
2

Add hotspot



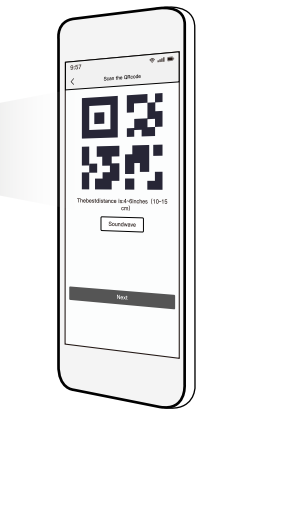
3

Please follow the instructions on the page, confirm and click Next



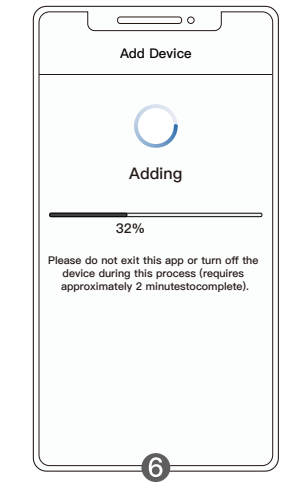
4

Please configure the Wi-Fi name and password



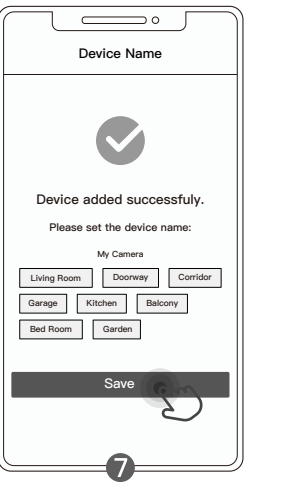
5

Let the QR code directly at the camera lens, with the optimal distance being 4-6 inches (10-15cm). When you hear the WiFi connection success prompt sound, click Next!



6

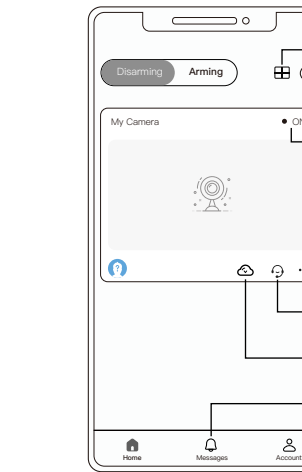
Connecting



7

Device added successfully, Please set the device name

3. Equipment functions



Quad screen

Add device

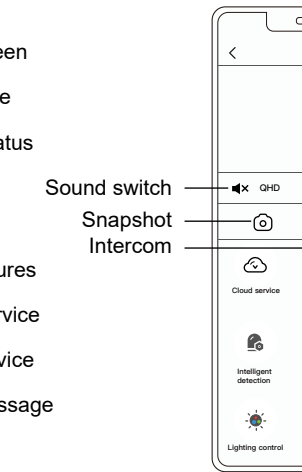
Device status

More features

Online service

Cloud service

Alarm message



Set up

Live screen

Full screen

Commonly used functions of the device

Sound switch

Snapshot

Intercom

4. Safety tips

- (1) Before using the camera, make sure you have an appropriate power source.
- (2) To avoid the risk of fire or electric shock, keep the camera in a cool, dry place.
- (3) Please keep the camera out of the reach of children. Children should use this product under adult supervision.

5. Frequently Asked Questions

1. What is the minimum bandwidth required to view real-time video?
(1) In order to ensure the smoothness of viewing real-time video, it is recommended that the upload bandwidth is not less than 512kbps.
(2) The real-time video traffic is about 2MB/minute, and it will increase every minute after turning on the sound about 0.4MB.
2. Why can't I store and read videos normally even after inserting a Micro SD (TF) card?
Kingston 8g/16G/32G、 SanDisk 16G/32G/64G/128G、 PNY 16G/32G/64G/128G

6. Packing list

- (1) Camera, (2) Quick Start Manual, (3) Screw Pack

FCC Warning

This device complies with part 15 of the FCC Rules. Operation is subject to the following two conditions: (1) This device may not cause harmful interference, and (2) this device must accept any interference received, including interference that may cause undesired operation.

Any Changes or modifications not expressly approved by the party responsible for compliance could void the user's authority to operate the equipment.

Note: This equipment has been tested and found to comply with the limits for a Class B digital device, pursuant to part 15 of the FCC Rules. These limits are designed to provide reasonable protection against harmful interference in a residential installation. This equipment generates uses and can radiate radio frequency energy and, if not installed and used in accordance with the instructions, may cause harmful interference to radio communications. However, there is no guarantee that interference will not occur in a particular installation. If this equipment does cause harmful interference to radio or television reception, which can be determined by turning the equipment off and on, the user is encouraged to try to correct the interference by one or more of the following measures:

- Reorient or relocate the receiving antenna.
- Increase the separation between the equipment and receiver.
- Connect the equipment into an outlet on a circuit different from that to which the receiver is connected.
- Consult the dealer or an experienced radio/TV technician for help.

This equipment complies with FCC radiation exposure limits set forth for an uncontrolled environment. This equipment should be installed and operated with minimum distance 20cm between the radiator & your body.