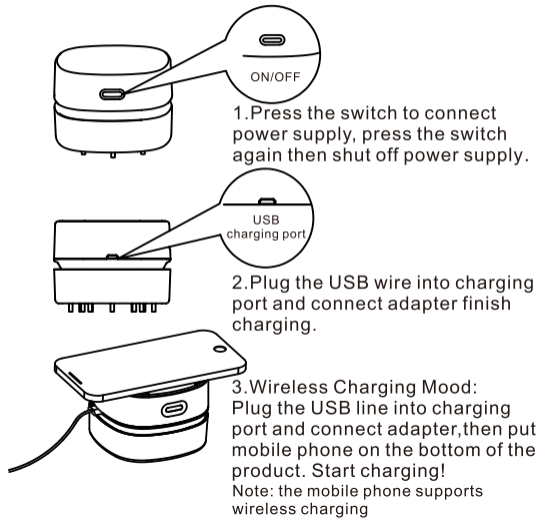
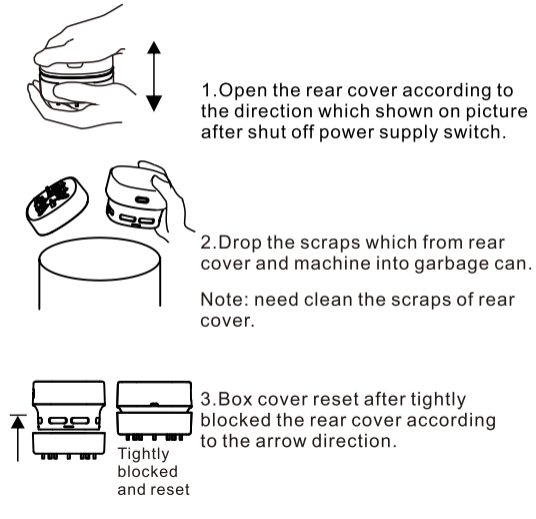


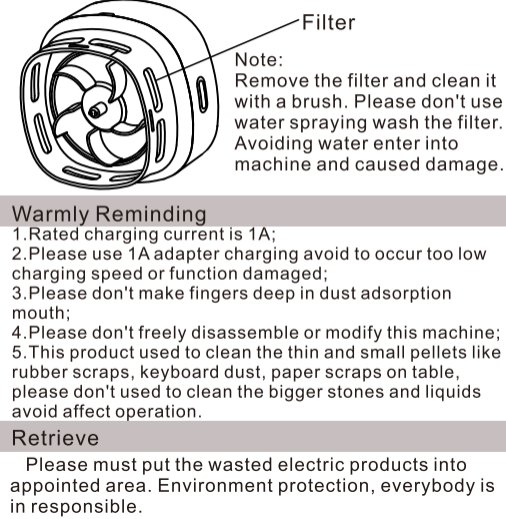
Operating Method



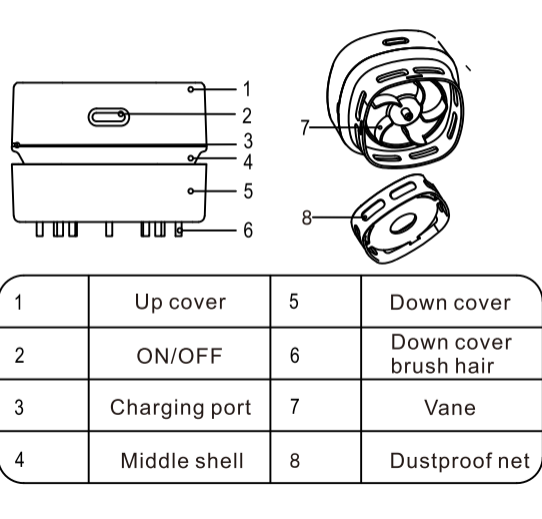
Cleaning Method



Product Maintenance Method



Product Structure and Name



Maintain Guarantee Card

Hello, dear customers! Thanks for you purchase products, this product produced under the strict quality control and quality test. This maintain guarantee card means that when occur failure under the normal operating situation, provide maintenance and adjustment to customer according to the stipulates in this maintain guarantee card.

- 1.From the day of purchased, can get 1 year maintain guarantee service only when happen failure under normal operating, but damages caused by the human damage(example incorrect manually disassemble the parts and handle damages, etc), naturally damaged(example fire, earthquake, flood, rat damage, etc) are not in maintain guarantee scope.
- 2.Consume parts(example batteries, etc) and renewal accessories are not belong to the maintain guarantee scope of this maintain guarantee card.
- 3.Not reissue once loss this maintain guarantee card, please must keep well.
- 4.Not provide free maintain guarantee service because the failure by customers.
- 5.Product happen failure when it's maintain guarantee period expired, if our company still has the accessories then provide maintain guarantee service with certain part fees and management fees.

Instruction:please keep this maintain guarantee card with invoice for check when future maintaining.

Product Name			
Maintain Guarantee Period	Valid within 1 year from the day of purchased, date:		
Produce Serial Number:			
1.Customer Information:			
Customer Name:			
Customer Address:			
Phone Number:		Postal Code:	
2.Distributor Information:			
Company Name:			
Company Address:			
Phone Number:		Postal Code:	

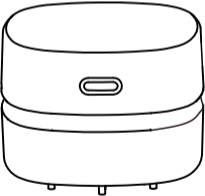
Product Parameter

Product Name	Desktop Vacuum Cleaner
Main Material	ABS
Battery	3.7V 1400mAh
Charging Current	5V 1A
Charging Time	Approximate 1 hour
Working Time	Continue working approximate 90 minutes
Wireless Charging(QI)	Power:5W; Sensor Distance:0.5mm; Charging Efficiency:75% Input Voltage:5V/1.2A; Output Voltage:5V/1A

Produce date:
Keep for reserve use

Interior contain small parts, not suitable to be used by the children under age 3, carefully prevent swallowed by children.

Operating Instruction
Desktop Vacuum Cleaner
Charging Model



FCC Warning

This device complies with part 15 of the FCC Rules. Operation is subject to the following two conditions:

- (1) This device may not cause harmful interference, and
- (2) this device must accept any interference received, including interference that may cause undesired operation.

Any Changes or modifications not expressly approved by the party responsible for compliance could void the user's authority to operate the equipment.

Note: This equipment has been tested and found to comply with the limits for a Class B digital device, pursuant to part 15 of the FCC Rules. These limits are designed to provide reasonable protection against harmful interference in a residential installation. This equipment generates uses and can radiate radio frequency energy and, if not installed and used in accordance with the instructions, may cause harmful interference to radio communications. However, there is no guarantee that interference will not occur in a particular installation. If this equipment does cause harmful interference to radio or television reception, which can be determined by turning the equipment off and on, the user is encouraged to try to correct the interference by one or more of the following measures:

- Reorient or relocate the receiving antenna.
- Increase the separation between the equipment and receiver.
- Connect the equipment into an outlet on a circuit different from that to which the receiver is connected.
- Consult the dealer or an experienced radio/TV technician for help.

The FCC certification of this device refers to RF exposure testing performed in typical operating conditions, where a person is no closer than 20 centimeters from the device surface at all times, except for non-repetitive patterns with transient time intervals in the order of a second. Only in the stated conditions, the device is shown to fully comply with the FCC RF Exposure requirements of KDB 447498.