

Digital Camera

Manual Instruction

S205



English

P1~P17

Français

P18~P34

Deutsch

P35~P51

Italiano

P52~P68

español

P69~P85

日本語

P86~P102

FCC Statement

This equipment has been tested and found to comply with the limits for a Class B digital device, pursuant to part 15 of the FCC Rules. These limits are designed to provide reasonable protection against harmful interference in a residential installation. This equipment generates, uses and can radiate radio frequency energy and, if not installed and used in accordance with the instructions, may cause harmful interference to radio communications. However, there is no guarantee that interference will not occur in a particular installation. If this equipment does cause harmful interference to radio or television reception, which can be determined by turning the equipment off and on, the user is encouraged to try to correct the interference by one or more of the following measures:

- Reorient or relocate the receiving antenna.
- Increase the separation between the equipment and receiver.
- Connect the equipment into an outlet on a circuit different from that to which the receiver is connected.
- Consult the dealer or an experienced radio/TV technician for help.

Caution: Any changes or modifications to this device not explicitly approved by manufacturer could void your authority to operate this equipment.

This device complies with part 15 of the FCC Rules. Operation is subject to the following two conditions: (1) This device may not cause harmful interference, and (2) this device must accept any interference received, including interference that may cause undesired operation.

Radiation Exposure Statement

The device has been evaluated to meet general RF exposure requirement. The device can be used in portable exposure condition without restriction.



I Preface

Thank you for purchasing this digital camera. Before operating this product, please read this manual and then store it in a safe place for future reference.

The contents covered by this user manual are the latest information during the preparation of this user manual. The screen display, illustrations, etc. used in this manual are designed to explain the operation of the camera in detail. Due to the differences in technical development and production batches. They may be slightly different from the digital camera you actually use

Disclaimer: great efforts have been made to ensure no inaccuracies and omissions in this manual. However, there is no guarantee that there will be no errors or omissions in this manual

Contents

Table of contents

Battery installation , removal and battery charging

Installing/ removing the battery	1
Battery charging	1
Battery precautions	2

Memory card

Installation of memory card	2
Usable memory card	3
Format memory card	3
Recording time of the memory card (estimated)	3

Change camera settings

Turn on the camera	4
Set date/time	5
Language setting	5
Take a photograph	5
Submenu catalog of system setting	6

Basic operation of this camera

Camera button function introduction	7
Mode Dial	9

Shooting function of this camera

Shooting menu settings	9
Photo menu setting	10
Slowly mode / Lapse mode	11
Manual focus	11

Manual focus	11
PlayBack mode	11
Power OFF	12
Fill light	12

Table of contents

Use of WiFi	12
Use app to connect camera for shooting	14

Transfer videos or photos to smartphones and share to

social software	14
Mic interface	14

Connect computer and webcam

Charging mode	15
Storage mode	15
PC mode	15

Usage notice

Safety Precautions	16
Camera cleaning and maintenance	16
Trouble removal	17



Getting Started

Battery installation/removal and battery charging

Installing/Removing the Battery



This camera uses high capacity and can be charged External lithium battery (NP-50). Please place the battery correctly in the battery slot.

Battery charging

(1) When charging with this camera, Please use a USB cable to connect the power adapter and camera. When charging, the red light is always on, and when fully charged, the red light goes out.



Tips: The camera will turn on automatically when charging. The battery will be fully charged faster when charged in the of state.



(2) Charge the battery with a dual charger.

Please put the battery directly into the charger.

(3) The battery charging time (estimated) is 2 hours to **fully** charge in a normal environment.

(4) Continuous working time (estimated): When the [system] is set to the factory default setting, it can work for 1.5 hours.

Battery precautions

It is recommended to start charging the battery within the temperature range of 10 °C to 30 °C. At lower temperatures.

The battery may not be able or require more time to fully charge. Charging at high temperatures may shorten battery life. A fully charged battery will naturally consume electricity. To ensure sufficient power, it is recommended to charge it in advance.

When the camera is not in use for a long time, please charge the battery every 3 months. Then let the battery discharge to maintain battery life.

Memory card

Installation of storage card



Please insert the micro SD card correctly into the card slot.

Inserting the wrong card may damage the microSD card and card slot.



Usable memory cards

This camera can use Micro SD (Class10). Up to 256 G support

Format memory card

It is recommended to format the memory card used for the first time in this camera, otherwise malfunction may occur.

For example, unable to record. When using the memory card in this camera for the first time, the format window will automatically pop up. As shown in the figure:



You can also enter the system menu of the "Format" submenu of this camera, press the OK button, and enter the format window as shown in the image above for formatting. You can also format the memory card on the computer.

Recording time of storage card (estimated)

The estimated recording time is for reference only, and the specific time may vary depending on the condition of the storage card and battery.

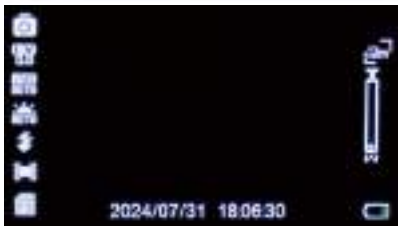
RESOLUTION	16G	32G	64G	128G	256G
720P/30FPS	105	300	620	1320	2460
720P/60FPS	160	300	620	1320	2460
720P/120FPS	80	170	350	720	1440
1080P/30FPS	160	300	620	1320	2460
1080P/60FPS	80	170	350	720	1440
2K/30FPS	80	170	350	720	1440
4K/ 30FPS	45	90	180	360	720
4K/ 60FPS	32	65	130	260	520
5K/ 30FPS	36	72	144	288	576

Note: If there are documents in the memory card that were not recorded by this camera or saved by the PC, the recording time may be shortened or the data may not be recorded correctly

Change camera settings

☉ Turn on the camera

Press the power button, the work indicator light will light up, the screen will light up, and the camera will turn on





Set Date/Time

Press "MENU" twice to enter the system settings menu, Press the down button to find the "Time Set/Date Set" submenu, and press "OK" to set the corresponding date and time

Language Settings

Under system settings, press the down button to find the 'Language' submenu, and press 'OK' to select the appropriate language.

Photography

Capture still images

This section explains that in normal camera mode, the situation will be automatically recognized to determine exposure, etc.

Select photo mode with the mode dial, and press the capture button halfway to focus. When the focus box on the display screen shows green, please fully press the camera button

Shooting a video

This section explains that in normal recording mode, the situation will be automatically recognized to determine exposure, etc.

Select the shooting mode on the mode dial and press the shooting button to start recording. Press the video button again to end the video.

Ⓢ Submenu catalog of system setting

Function	Manu Contents
Language	English/简体中文/繁體中文/Espanol/Italiano/Portugues/Deutsch/Francais/Polski/Pyckknn/日本語/한국어/Thai/Dutch
Icon Display	Off/On
Focus Mode	Auto/Manual Focus
Wi-Fi	On/Off
WIFI SSID	4K WIFI can be modified through keys
WI-FI password	12345678 by default;WiFi password can be modified through keys
Reset WiFi	Yes/No
Qs WiFi Channel	Auto/01/02/03/04/05/06/07/08/09/10/11/12/13
Sounds Setting	Shutter/Boot Sound/Touch-tone/Volume/Record Audio
Date&Time	Year/month/day/hour/minute/second
LED Indicator	Off/On
Screen Saver	30 Second/1min/3min/5min/OFF
Auto Power Off	1min/3min/5min/OFF
Light Source Frequency	50HZ/60HZ/Auto
Format Card	Yes/No
Device Info	Product mode an aver sion number
Card Info	Capacity and Free Space
Factory Reset	Yes/No



Basic operation of this camera

Camera button function introduction



- 1:Charging indicator
- 2:Work indicator light
- 3:Album
- 4:WIFI
- 5:Flash Lamp
- 6:Right/shooting screen brightness
- 7:Delete

- 8:OK
- 9:Menu
- 10:Display/Close
- 11:Left/Delay
- 12:Liquid crystal display



1:Work Indicator Light

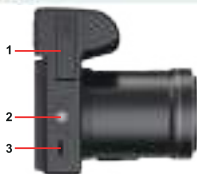
2:Flash



3:USB

4:Video cable interface

5:Microphone connector



1:Battery Door
3:Memory slot

2:Tripod slot



1:Camera button
3:Turn on/off

2:Video button
4:Mode dial

Name	Function
Power	Power on/off
Shoot button	Shoot video start /end
Take photo button	Take photo/Manual focus
Mode Dial	mode menu
Flash	Brightening
Charging indicator light	When charging, a red light is displayed,and it turns off when fully charged
Work indicator light	The blue light remains on after power on
T	Zoom in
W	Zoom out
UP	Move up
	Flash on/off/automatic
Right	Move right
	Shooting brightness adjustment
OK	Confirm
Down	Move down
	Delete videos or photos
DISP Button	Turn off screen menu display
	Turn off the display screen
Menu	Set shooting menu and system menu
Left	Move left
	Interval photo
Memory Slot	Card slot or inserting mirco SD card
USB interface	USB cable charging
	Connect the computer with USB cable
MiC interface	External microphone interface(3.5mm)
Video cable interface	Video and audio signal transmission



Mode Dial



Rotate the mode dial button to select the corresponding mode. The corresponding reference for this mode is as follows:

ICON	MODE	Function
	Photo	Take a single photonormally
	Interval photograph	Automatically take a single photo
	camera timer	Take a single photo after a specifiednumber of seconds
	Continuous shooting	Take multiple consecutive photos
	Recording	Normal recording mode
	Slow motion recording	Slow motion recording
	Delay recording	Quick action recording
	Loop recording	Loop action recording
	Recording+Shooting	Joint operation of video and photography

Camera shooting function

⚙ Shooting menu settings

After selecting the corresponding mode, press the menu button to enter the shooting mode setting menu.

Sub-menu	Menu content
Video Resolution	5K 30FPS/4K 60FPS/4K 30FPS/2K 30FPS/1080P 30FPS/1080P 60FPS/720P 60FPS/720P 120FPS
White Balance	Auto/Daylight/Cloudy/Fluorescent/Tungsten
Filter	Normal/BW/Natural/Negative/Warm
Exposure Setting	-3/-2/-1/0/+1/+2/+3
Metering Mode	Center Metering/ Average Metering/Spot Metering
Sharpness	High/Middle/Low
Video Quality	Super high quality/High quality/Standard
Time Stamp	Off/Date/Date&Time

⦿ Take still images menu

Sub-menu	Menu content
Photo Resolution	64MP/56MP/48MP/30MP/24MP/20MP/14MP/ 12MP/10MP/8MP/5MP/2MP
White Balance	Auto/Daylight/Cloudy/Fluorescent/Tungsten
Filter	Normal/BW/Natural/Negative/Warm
Exposure Setting	-3/-2/-1/0/+1/+2/+3
Metering Mode	Center Metering/Average Metering/ Spot Metering
Image Quality	Super high quality/High quality/Standard
Sharpness	High/Middle/Low
ISO	Auto/100/200/400/800/1600/3200/6400
Framing grid	Off/Golden ratio/Rule of Thirds/CrossHatch
Time Stamp	Off/Date/Date&Time



Slowly mode / Lapse mode

It is used to record the moment that cannot be captured by the naked eye (slow motion shooting), or shorten the long-time phenomenon to a short time for recording (fast motion shooting). It can record intense sports scenes, the moment when birds take off, the appearance of flower buds and the change of clouds and stars. The sound is not recorded.

Press the mode button, select **Slowly mode / Lapse mode**, and press the video button to start shooting. To finish shooting, press the video button again.

Manual focus

In the photo mode, the shoot button has two layers. Gently press the first layer to focus, then press the second layer to take a picture. Gently press the first layer of the shoot button, and the focusing logo frame will appear on the display until the camera has focused clearly. Then press the second layer of the shoot button to take the best clear picture (normal focusing range >0.33ft).

In recording mode, the shoot button also has two layers. Gently press the first layer to focus, then press the second layer to shoot.

Note: If the shooting distance is less than 3.3 feet, your finger needs to keep pressing the focus button during the shooting process.

Video pause

This camera supports video pause. During the recording, press the Power button, the recording is stopped and press it again, the recording is continued. If pressing the record button again, the recording will end.

Tips: The recorded long video will be saved in the memory card in sections, and the document name is ***0000—***0000X.

PlayBack mode

Turn the mode dial to playback mode, and then press the Left or Right button to view the photos or videos. Press the down button to choose whether to delete the current photo or video.

Power OFF

Long press POWER button to turn off the digital camera. If you set the auto turn off menu, when the digital camera is free ,it will turn off automatically without operation in more than 3 min/5min/10min, so to save power.

Fill light

It can be used to fill light in a dark environment. Press the "up" button to quickly set to turn off fill light or turn on fill light. In the photo mode, press the "up " button to quickly set the following three corresponding flash modes.

	No flash
	Auto flash
	Forced flash

Operations with smartphones and computers

Use of WiFi

1. Smartphone download app and WiFi connection First, please scan the following QR code with your smartphone to download the app, or directly search QS Camera in Google Play and App store.

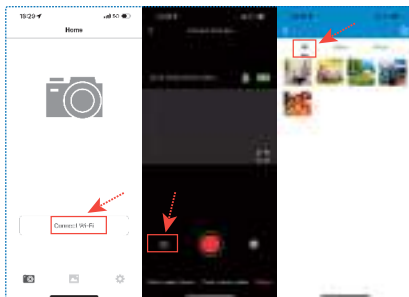
(1) Turn on the camera first, enter the menu of system setup, find the submenu of wireless hotspot, and press the OK key to turn on WiFi. The camera screen will show WiFi name QS Camera password.



(2) On your phone or tablet, turn on settings ----WLAN, find the WiFi name of the camera and enter WiFi password to connect the phone and the camera.



(3) After the phone is connected to the camera's wifi, open the app and choose to connect to wifi to control the camera, at the bottom you can slide to choose the mode of taking photos or videos, according to the button of the film, you can enter the gallery, look back at the photos or videos you have taken.

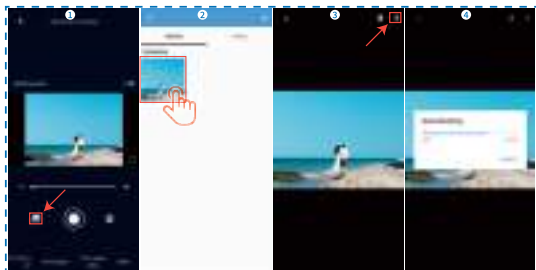


(4) Turn off the WIFI function: In the WIFI connection state, press the WIFI button to cut off the WIFI signal source of the camera, and the camera returns to the normal state.

Note: this WiFi is a wireless signal connected to the camera APP, it cannot directly connect to the Internet.

Transfer videos or photos to smartphones and share to social software

First, you need to enter the "QS camera" page of the "Media Gallery" in the APP, click the icon in the upper right corner, select a photo or video, and download it. You can share the photos or videos to social in the album. At this time you need to disconnect the camera's WiFi hotspot and connect to the mobile data traffic of your mobilephone or tablet).



Mic interface

The camera supports an external microphone with a 3.5mm connector. Please note that this connector does not support headphone access.



Connect computer and webcam

Connect the camera to the available USB port on the computer with the USB cable. After inserting it, the camera will automatically turn on. Press the up and down button to select the charging mode, storage mode or pc mode, and press the OK to enter.

⦿ Charging mode

(1) Select charging mode, all functions of the camera can be used normally. The camera supports recording while charging.

⦿ Storage mode

When the storage mode is selected, a new removable storage device will be added in the "My Computer" window, which will transfer photos and video files to the computer.

Note: do not disconnect the USB connection when downloading the file. Do not plug and unplug the memory card when connecting the USB, so as to avoid data loss.

⦿ PC mode

Select PC mode, the camera can be used as a camera.

Tip: if the camera cannot be enabled after connection, please go to the device manager of the computer, find the image device menu or camera menu, and click to check whether there is a UVC Camera device, if it is already connected. If it is a laptop with its own webcam, you need to disable its own webcam. Only then can the camera be used as a webcam.

Usage notice

Safety Precautions

- (1) Do not disassemble or modify the product.
- (2) Please stop operating camera immediately if there are smoke or unpleasant smell on any parts of camera, otherwise it may cause fire or electric shock. Turn off camera immediately and remove camera's battery or unplug power cord from electrical outlet. Make sure the camera has stopped emitting smoke or unpleasant smell.
- (3) Do not expose or immerse the camera to water or other liquids. This camera is not waterproof. Please dry with a soft cloth if the case is exposed to liquid or salt water. Turn off camera immediately and remove camera's battery or unplug power cord from electrical outlet if water or other materials immerse into the camera.
- (4) Do not trigger the flash in close to human or animal eyes. Your eyesight may be damaged when facing a strong light source if the distance is too close. Please pay special attention to keep more than 1 meter (39 inches) away from baby.
- (5) Keep the camera and battery out of the reach of children.
- (6) Do not heat the battery or expose it to sources of ignition (otherwise it may explode).



Camera cleaning and maintenance

- (1) If you do not use the camera for a long time, take out the camera battery and place it in a dust-free, dry environment with a temperature no higher than 30 °C.



- (2) In order to extend the service life of the battery, please discharge it completely before storage.
- (3) Please fully discharge the battery at least once every 3 months after it has been fully charged.
- (4) If there is dust or dirt on the lens or screen, gently wipe it with a clean, soft lens cleaning cloth.
- (5) As this machine is a precision instrument, please do not drop it or suffer from strong impact or vibration.

Trouble removal

Trouble	Measures
Camera cannot start after battery is installed	Low battery, please replace with a new one.
	The battery is not installed in place; please confirm that the battery is installed correctly.
	There may be an error in the camera program, please pull out the battery, reinstall, and then turn on.
Unable to charge	If the charging indicator light is flashing, the battery is not installed in place or in poor contact. Please reinstall the battery until the indicator light is on for a long time (the indicator light will go out when the battery is full).
	Before the battery is inserted into the charger, if the charging indicator (blue) does not light up, it means that the charger is not plugged in properly, please check whether the charger is plugged in correctly.
Unable to charge	Please check whether the USB interface of computer is working properly.
	Please check the compatibility of the computer system.