

Attachment 2: Internal Photo of EUT

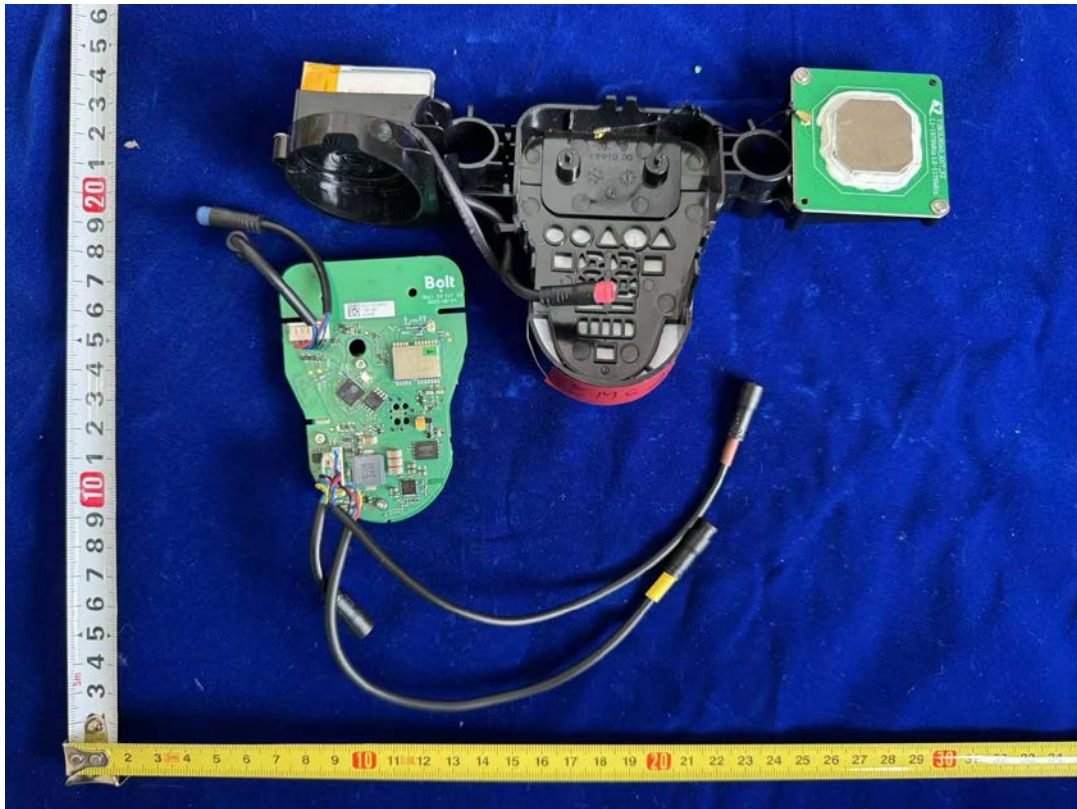


Photo 1: Internal View for PCB

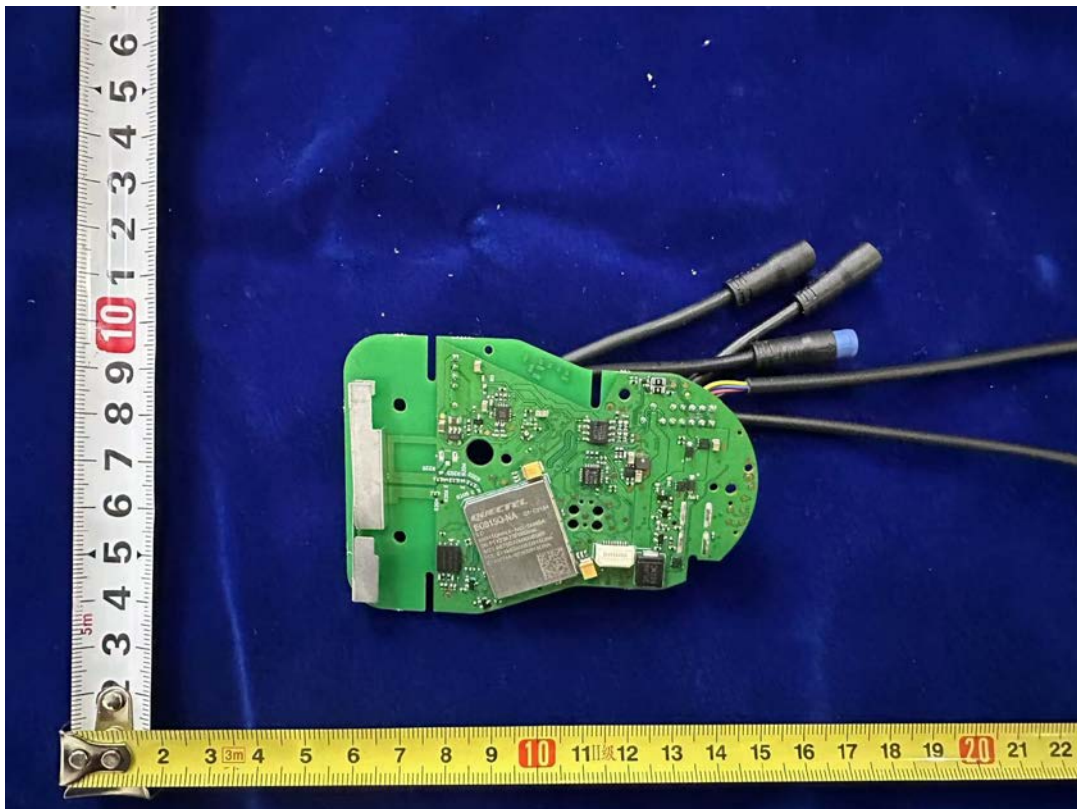


Photo 2: Internal View for PCB

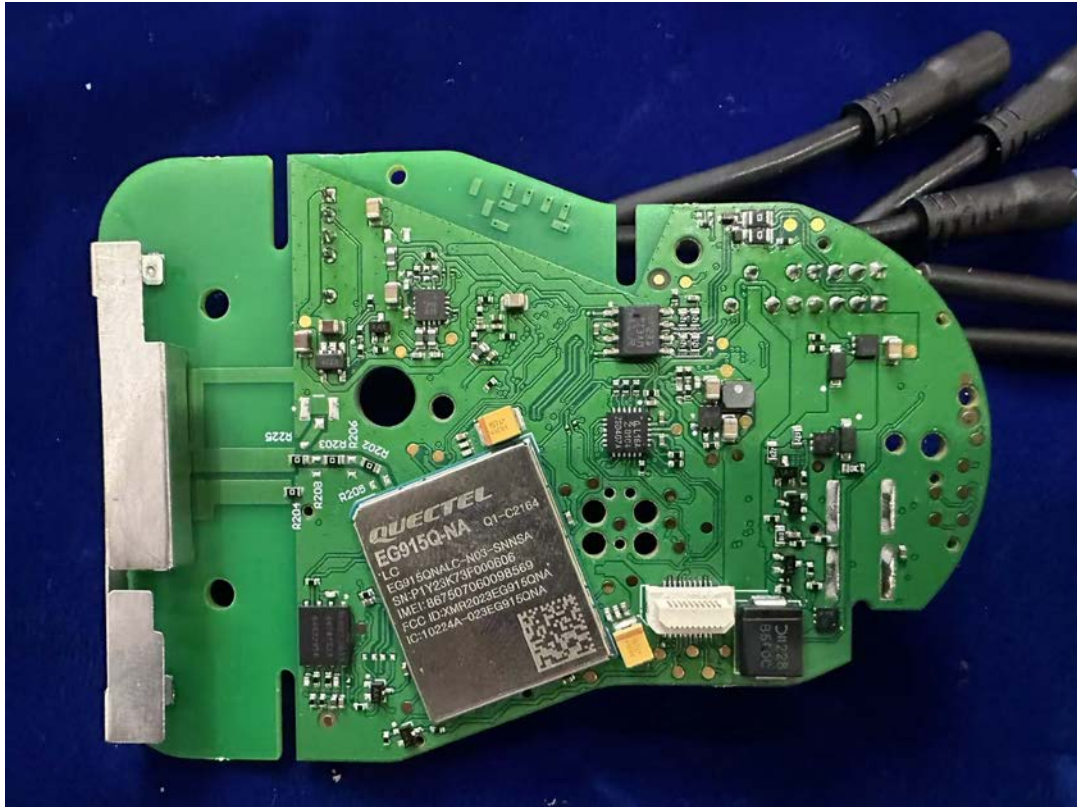


Photo 3: Internal View for PCB

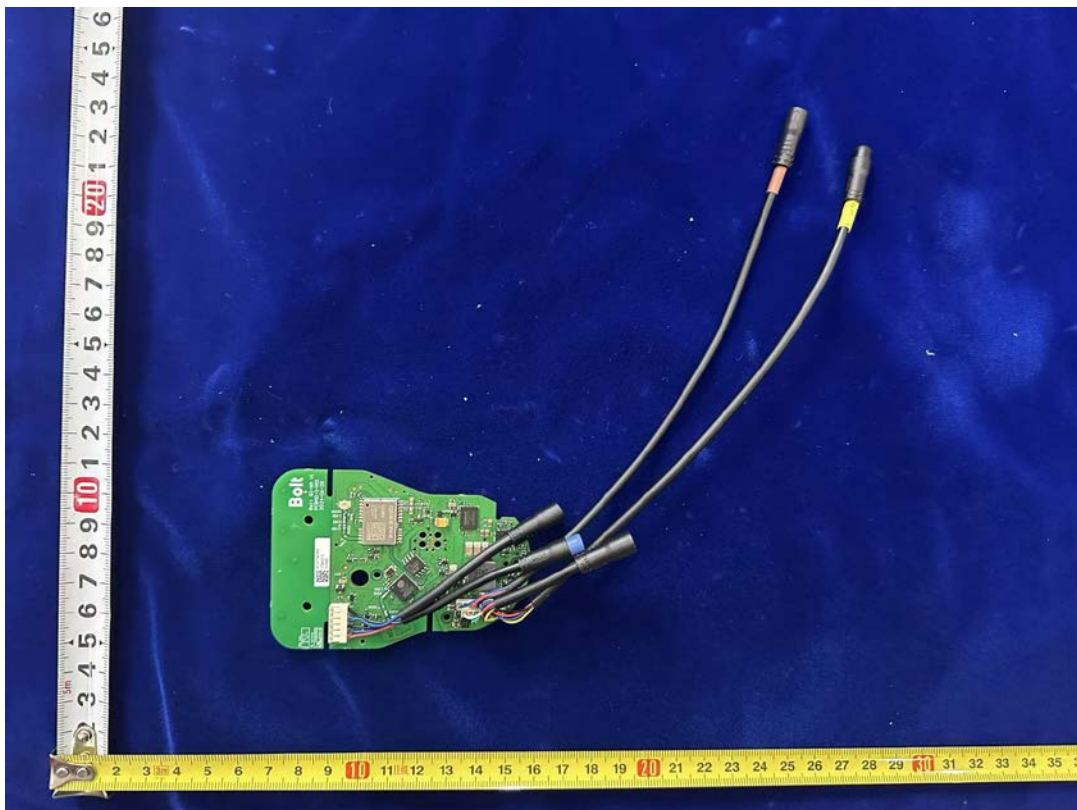


Photo 4: Internal View for PCB

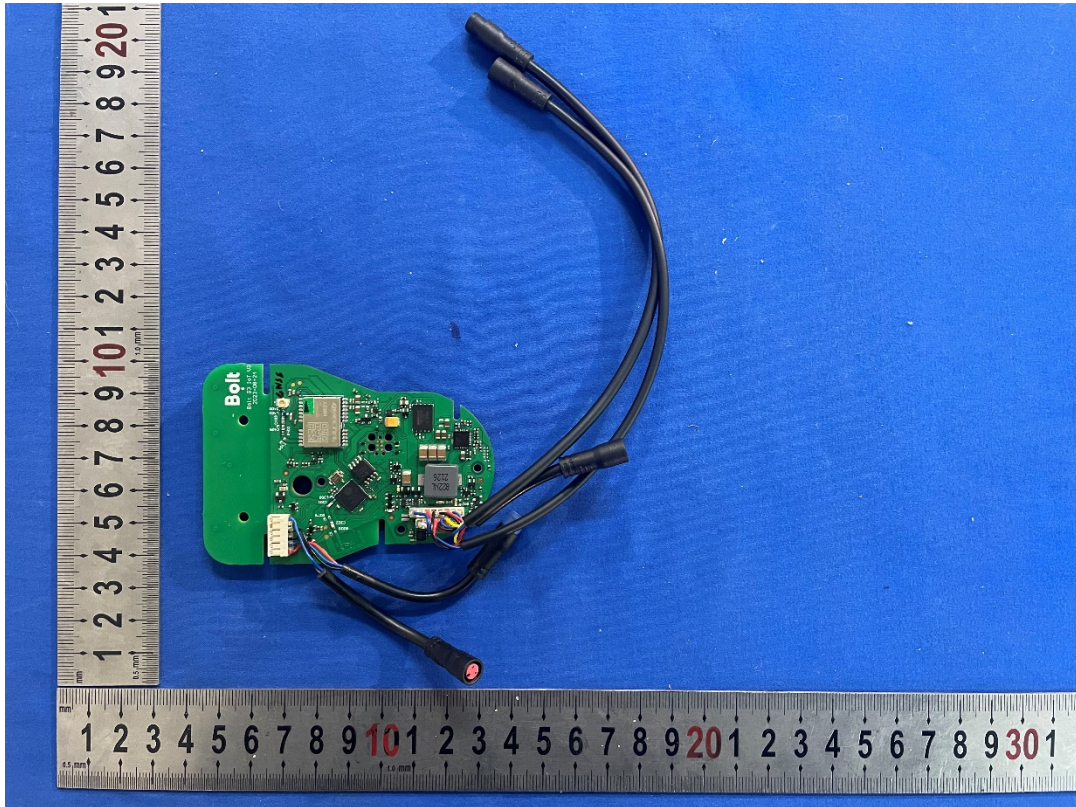


Photo 5: Internal View for PCB

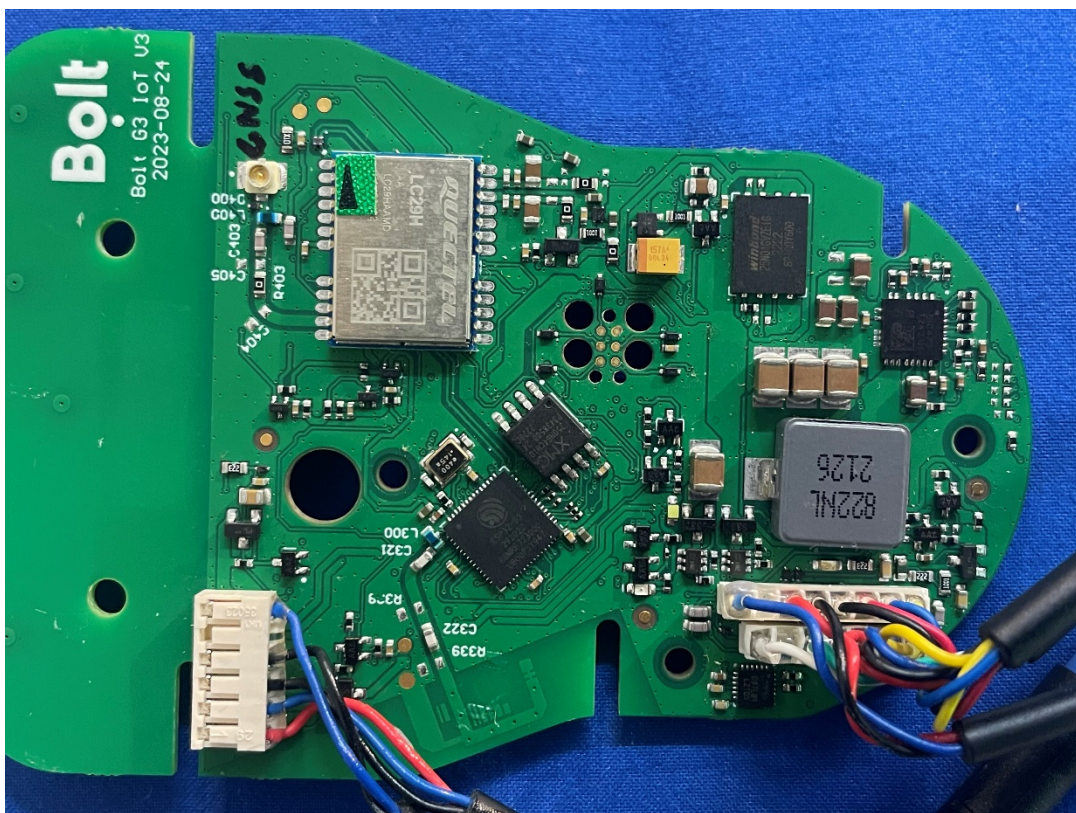


Photo 6: Internal View for PCB

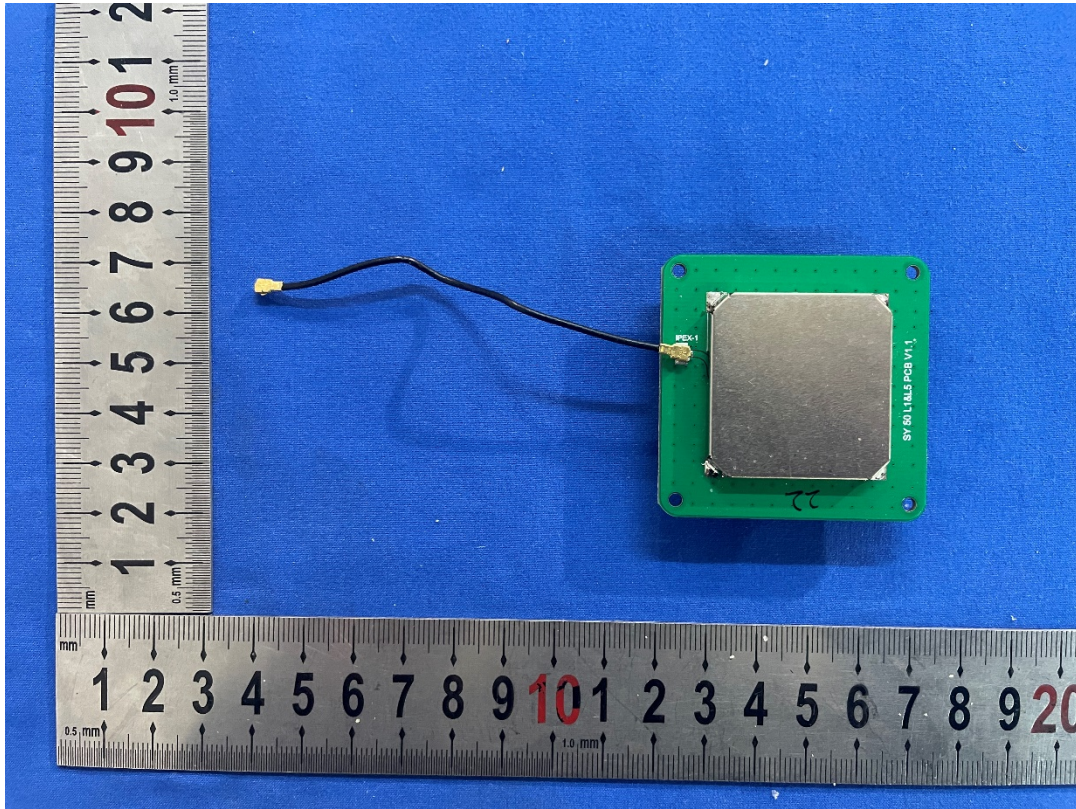


Photo 7: Internal View for GNSS Antenna

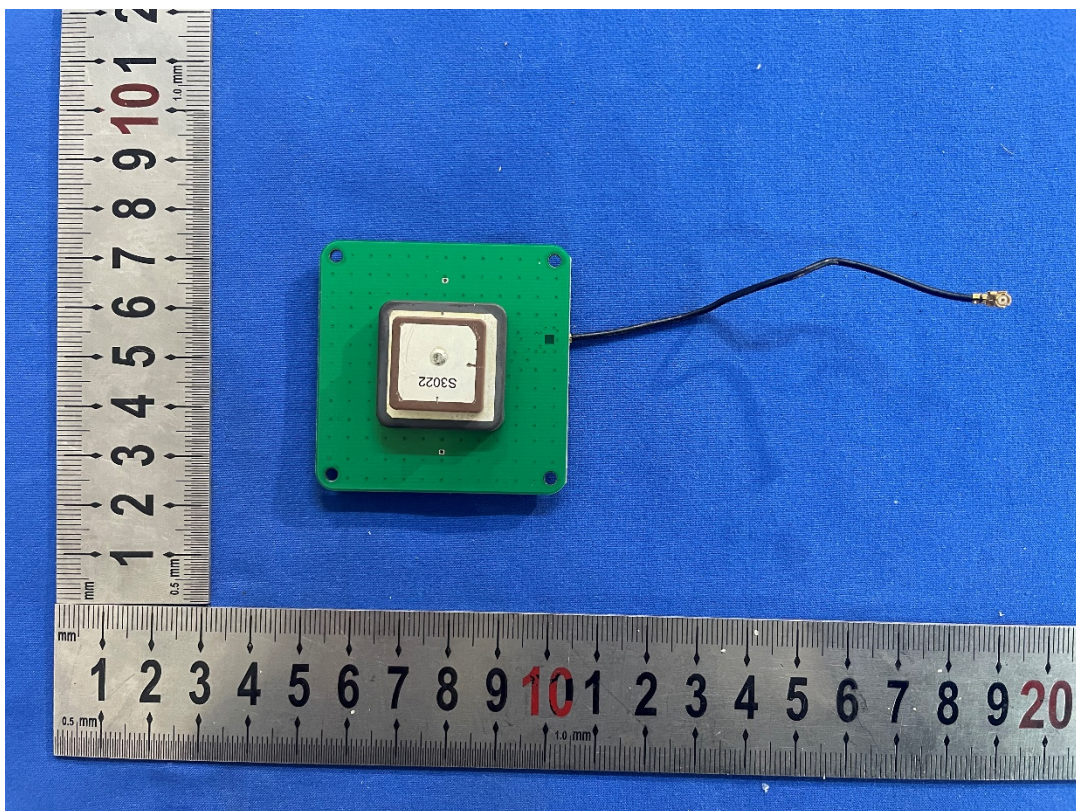


Photo 8: Internal View for GNSS Antenna

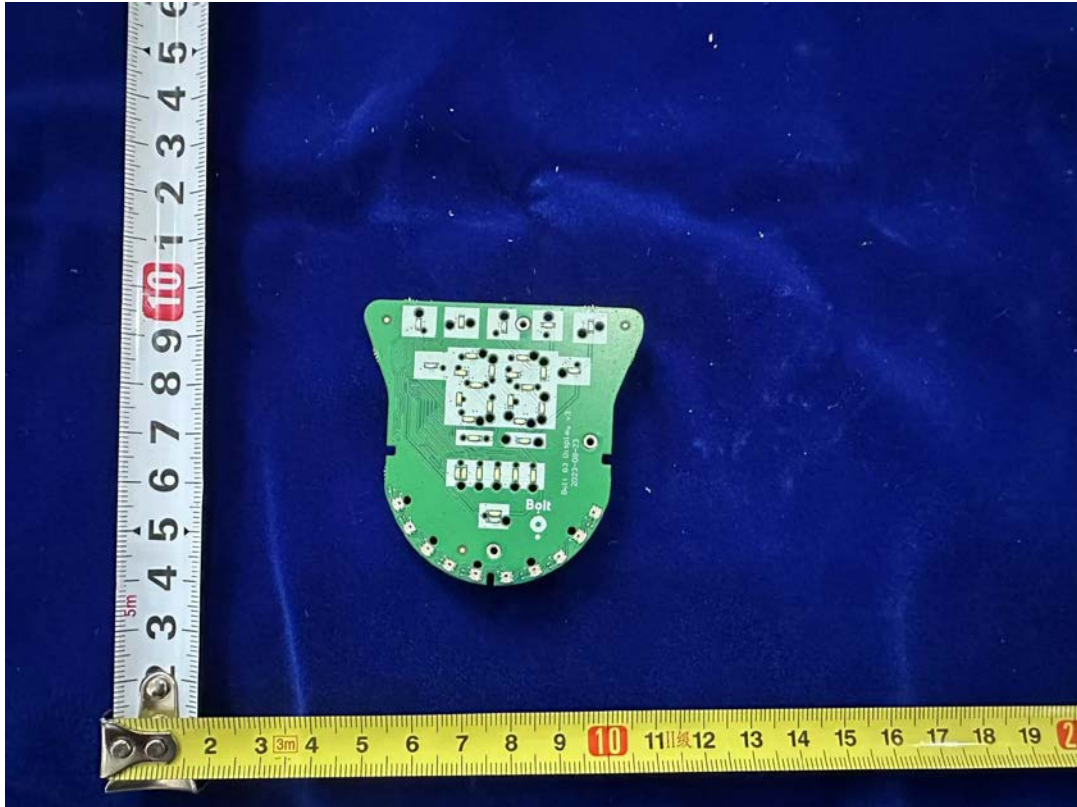


Photo 9: Internal View for PCB



Photo 10: Internal View for PCB

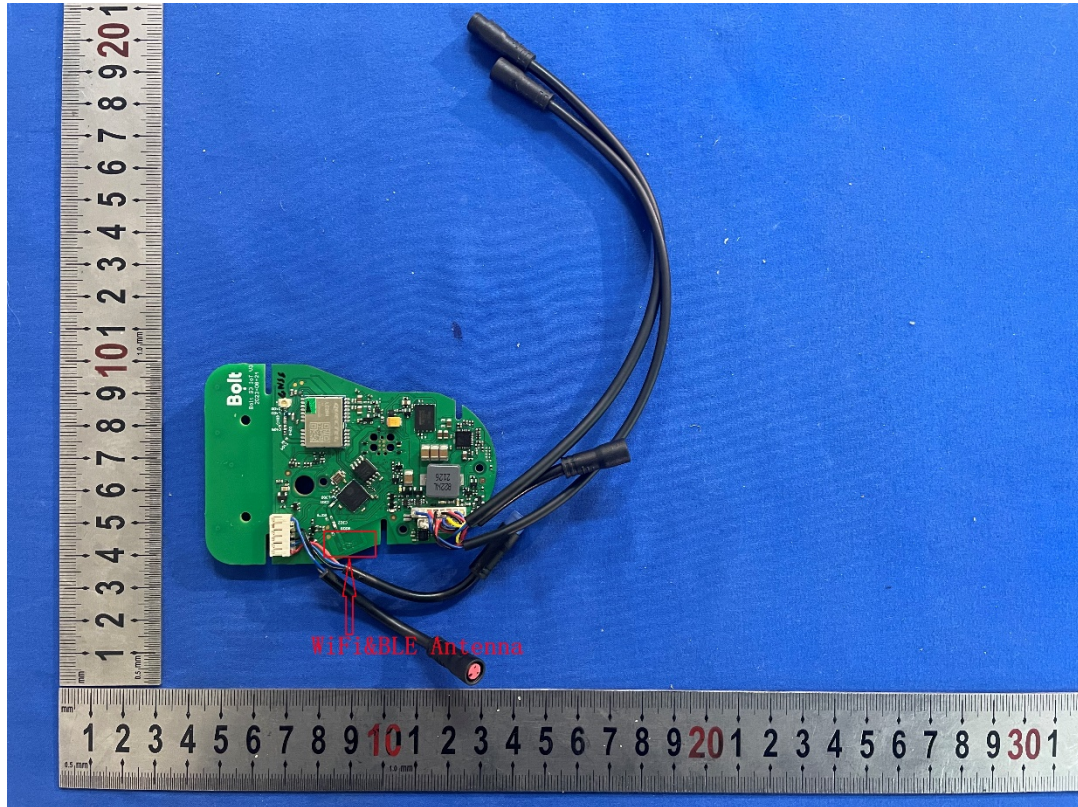


Photo 11: Internal View for 2.4G-WiFi/BLE Antenna

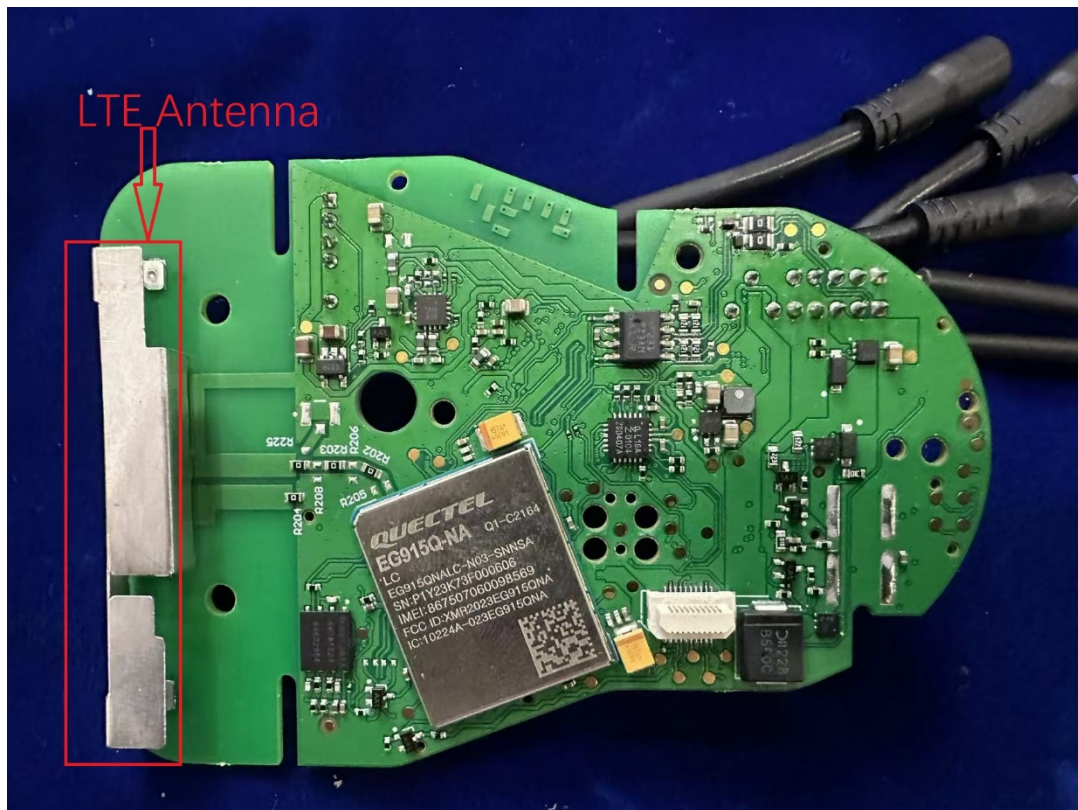


Photo 12: Internal View for LTE Antenna