



Smart Switch 01 Control Under Switch Mode

Electricity Usage

Users can use Electricity Usage to inquire about the current electricity consumption and also input the unit price of electricity to monitor the amount of money spent on the electricity consumed at any time.

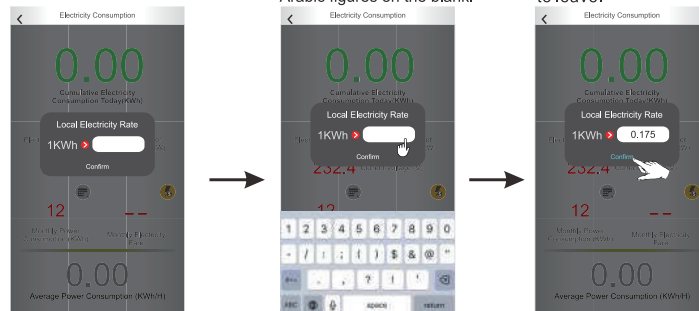
Input local electricity rate.



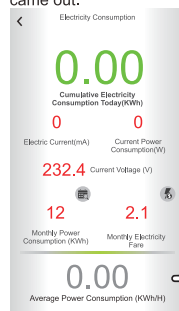
input the rate here.

Enter the Cost of 1 KWh of Electricity in your Area. You could just key in Arabic figures on the blank.

Touch the "Confirm" key to leave.



The monthly expense came out.



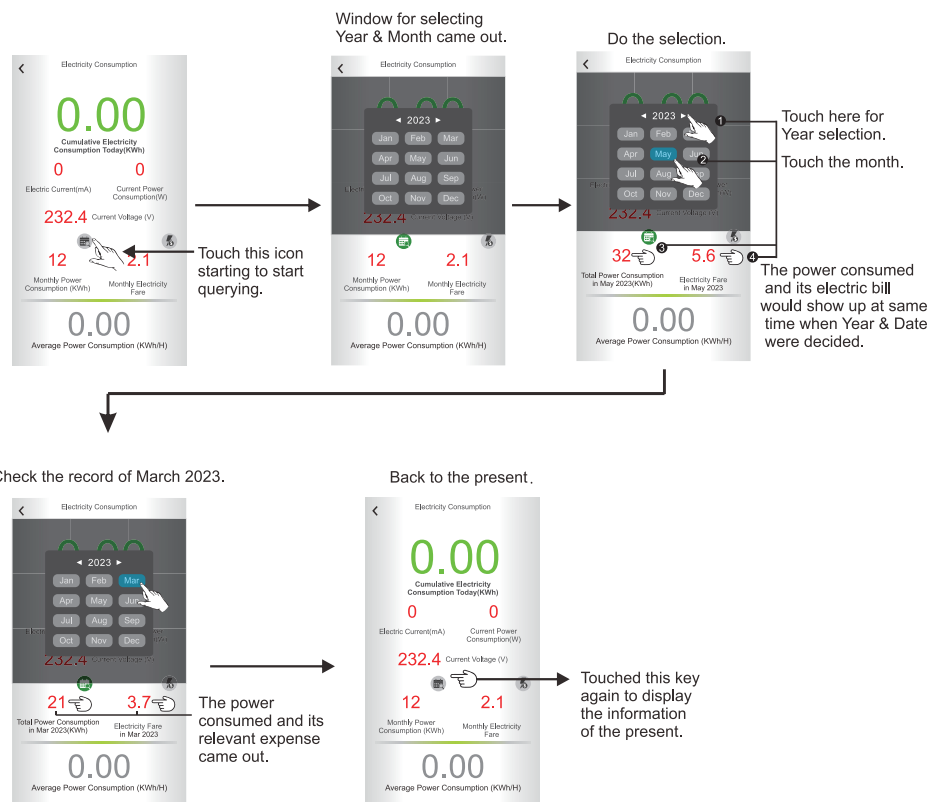
Average Power Consumption calculated starting from 00:00 daily, with the value updated every hour, and displayed only when a full hour has elapsed.



Smart Switch 01 Control Under Switch Mode

- **Review the past power consumption and electric bill.**

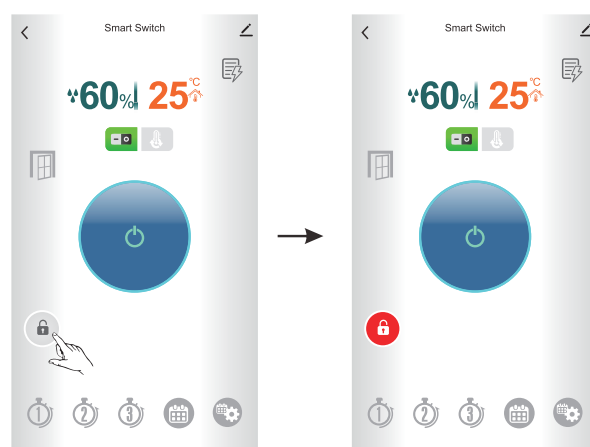
Users can query their electricity consumption and costs for each month in the past five years using "Electricity Consumption". You can follow the instructions in the example below to perform the query.



This device would just store the records for 5 years. The data recorded over 5 years would be abandoned automatically.

Key Lock

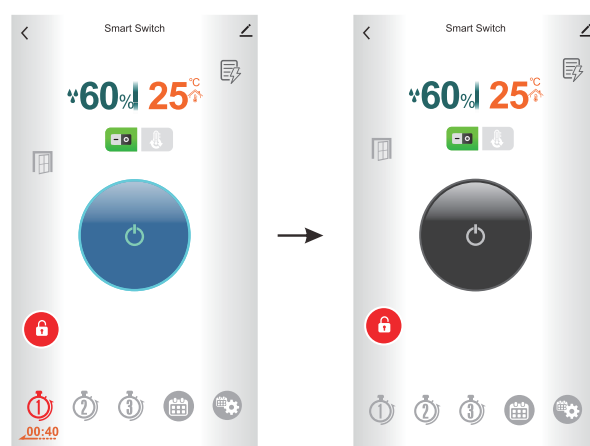
This function allows user to lock down functional keys on Smart Switch. Touching the "🔒" symbol on screen could activate this function. The operation on App would not be restricted.



Enable the Key Lock function would just banned the use of Mode key on Smart Switch, the operation on App has no influence.

- When activating the 40 minute timer in Key Lock.

After 40 minutes ,enters standby mode.



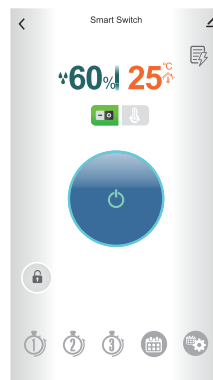
Window Sensor

When Window / Door Sensor is successfully connected to Smart Switch in the App, you'll find " " appears on screen.

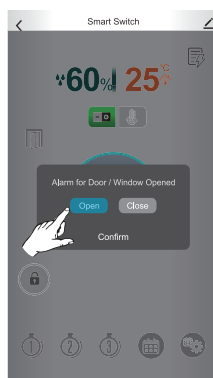
This " " would appears on screen when sensor was installed.



If there is no installed sensor be detected, the icon would be hidden.



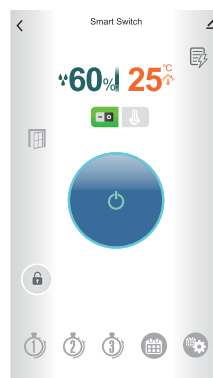
Touched the icon to enable the alarm sound or turn it off.



Touched "Confirm" to leave the setting.

Confirm

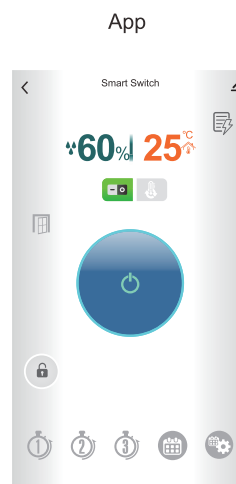
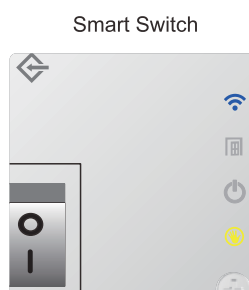
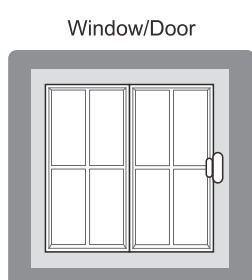
Back to prime page.



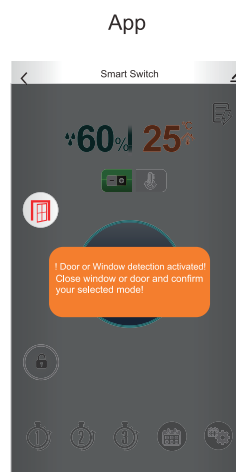


Window/Door Open & Close

- **Window/Door closed.**



- **Window/Door has just been opened.**

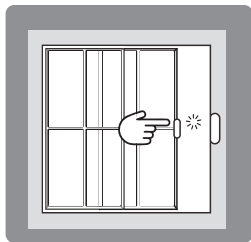




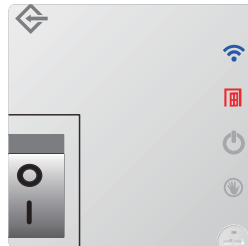
Window/Door Open & Close

- Window/Door was opened for more than a minute.

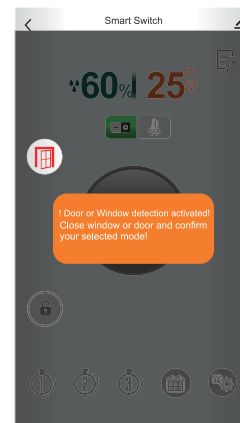
Window/Door



Smart Switch



App

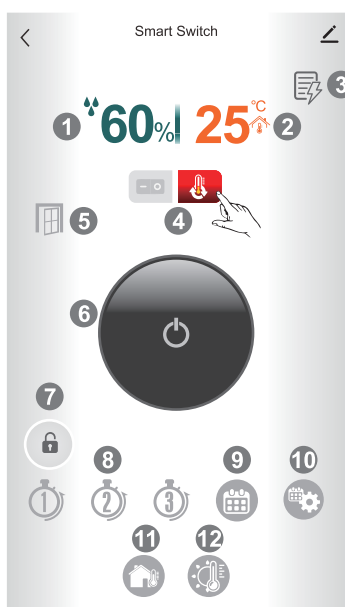




Smart Switch 01 Control Under Thermo Mode

Thermo Mode controls the temperature of a room and heating device.

Thermo Mode



- 1 Humidity
- 2 Room Temperature
- 3 Electricity Consumption
- 4 On/Off Mode & Thermo Mode
- 5 Window / Door Status
- 6 Standby / Activate
- 7 Key Lock
- 8 Timer(1H/2H/3H)
- 9 Program Mode
- 10 Program Setting
- 11 Button for Room Temperature Setting
- 12 Button for Device Temperature Setting



Smart Switch 01 Control Under Thermo Mode

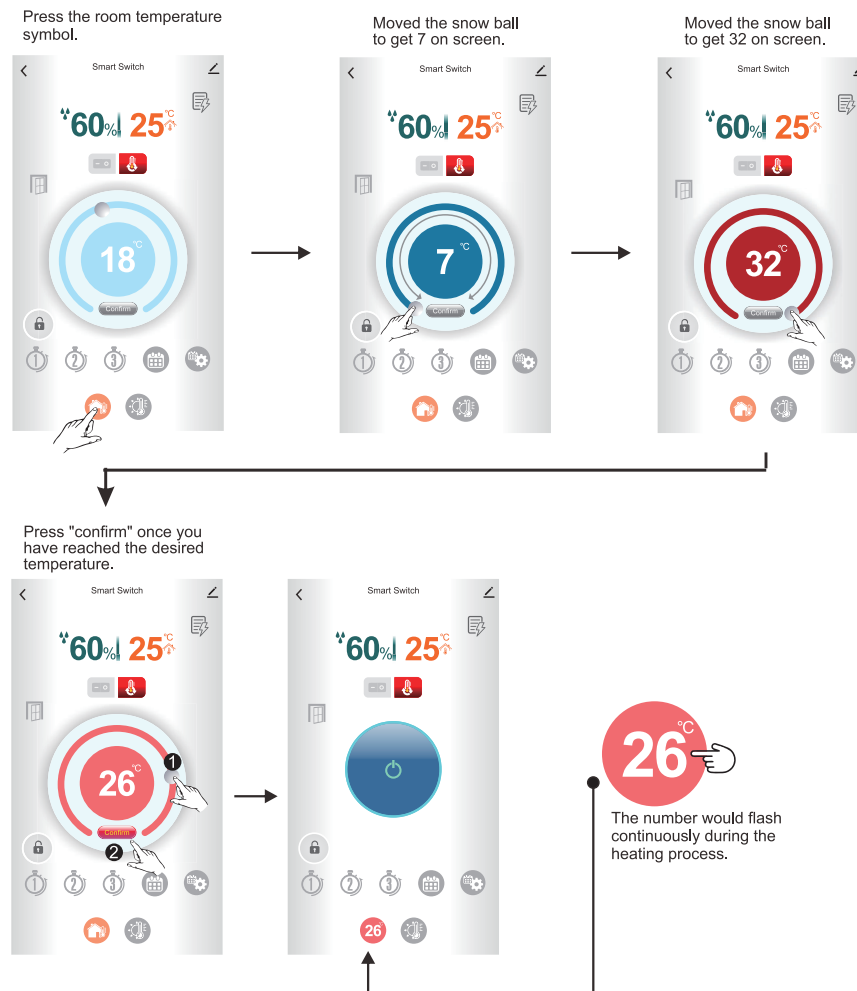
Before using your device, you must set the temperature after entering thermo mode.

Room Temperature Setting

Press the room temperature symbol to set the temperature. There is a default temperature of 18 °C.

Adjusting the temperature by rolling the small white ball. It's range is from 7 to 32°C .


The color of the area surrounding the figure would change depending on different numbers.

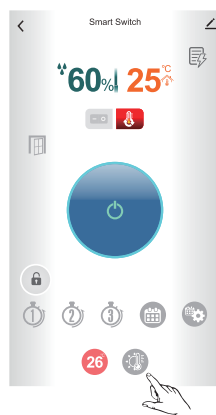




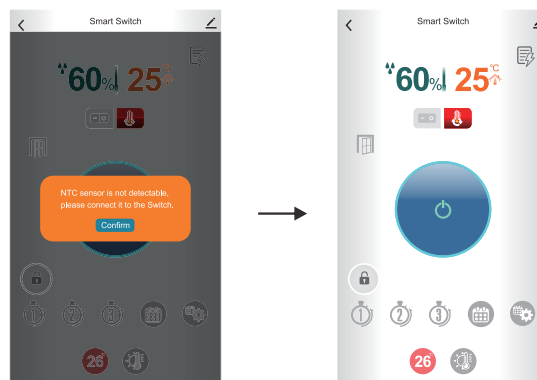
Smart Switch 01 Control Under Thermo Mode

Heating Device Temperature Setting

Press "  " symbol to set temperature of heating device. Its range is from 7 °C to 70 °C.
It is important that the device's temperature is not set higher than 30 degrees Celsius when it is used to control under floor heating.



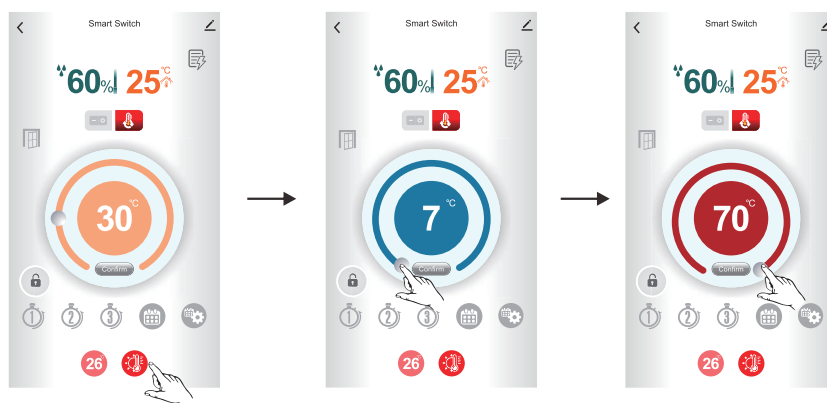
If the NTC of the heating device is not connected to the Smart Switch, a warning appears on the screen when you press the symbol of device temperature.



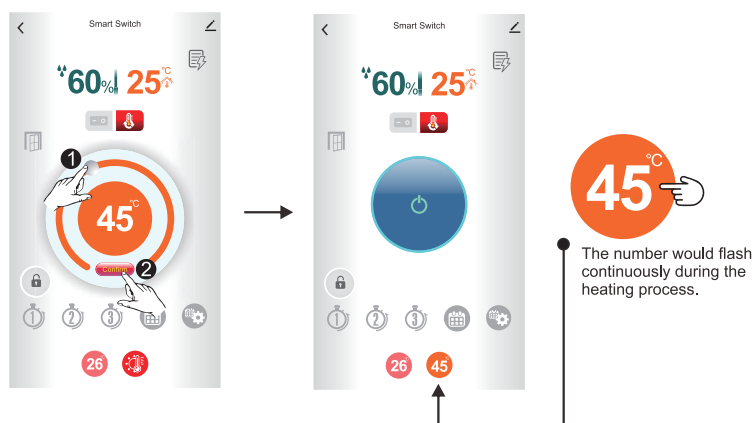


Smart Switch 01 Control Under Thermo Mode

By default, the temperature is set at 30 °C, but you can adjust it between 7 and 70 °C. Once the settings have been made, click the "confirm" button. Activate mode will work based on your settings when you select it. Even if the device's set temperature is not reached, the heating process will stop as soon as the room temperature reaches the set temperature.



Moved the snow ball to get 45°C on screen.
Press "confirm" once you have reached the desired temperature.





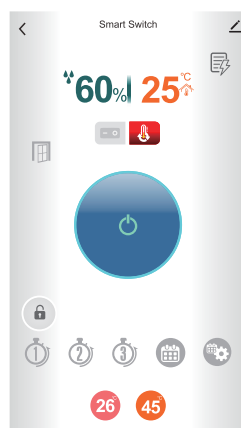
Smart Switch 01 Control Under Thermo Mode

Under " Thermo Mode " , you can control both room temperature and heating device temperature by using 4 different work modes and other features. The work modes are Standby, Timer, Activate and Weekly Program. Here Standby and Activate mode is able to be selected automatically based on the temperature settings.

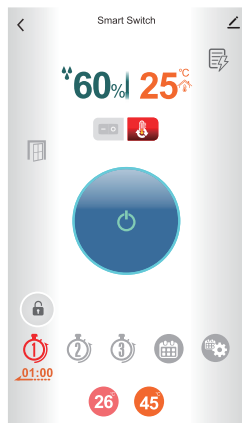
Standby



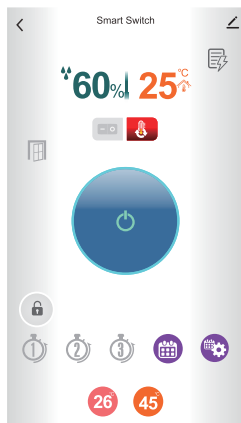
Activate



Timer

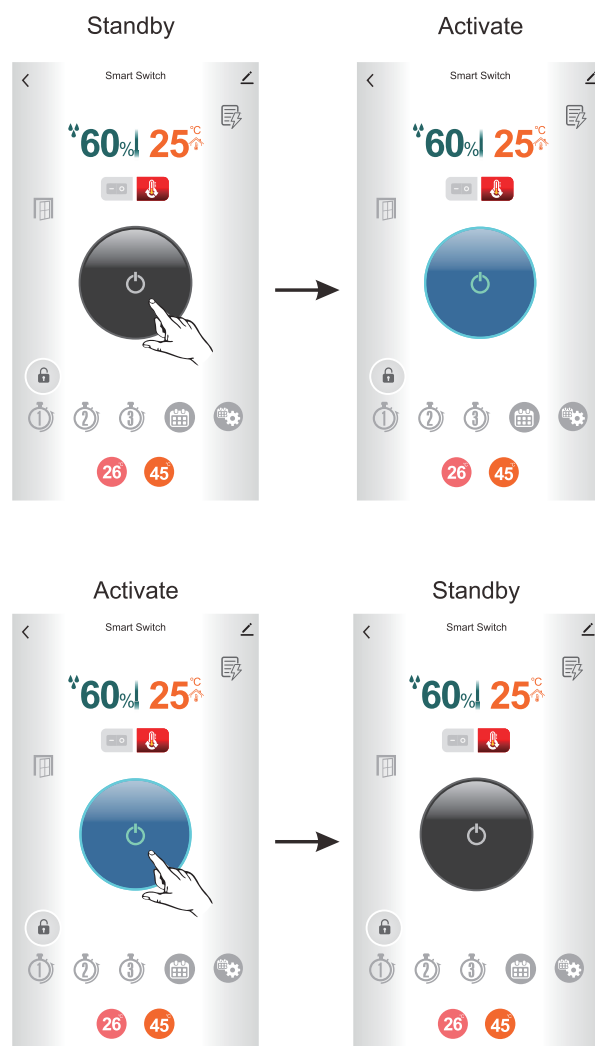


Weekly Program



Standby / Activate

Activate mode makes Smart Switch starting to work. In addition, if there is a temperature setting, it will run accordingly. In the meantime, Standby mode allows the device to shut down.

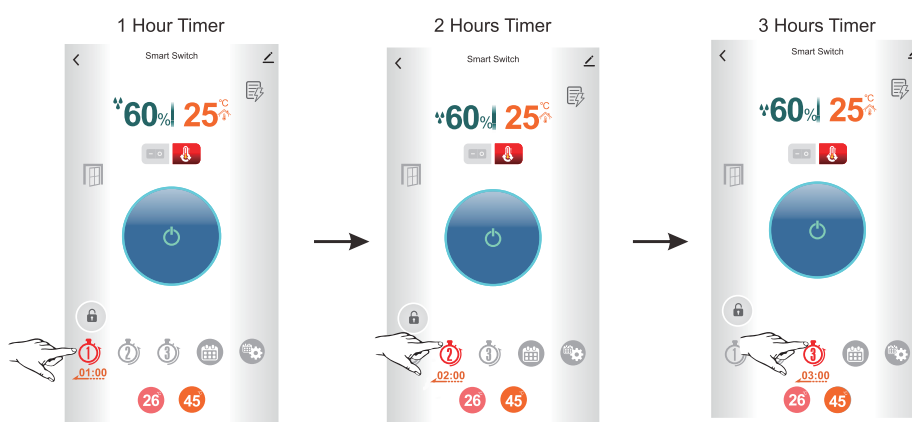




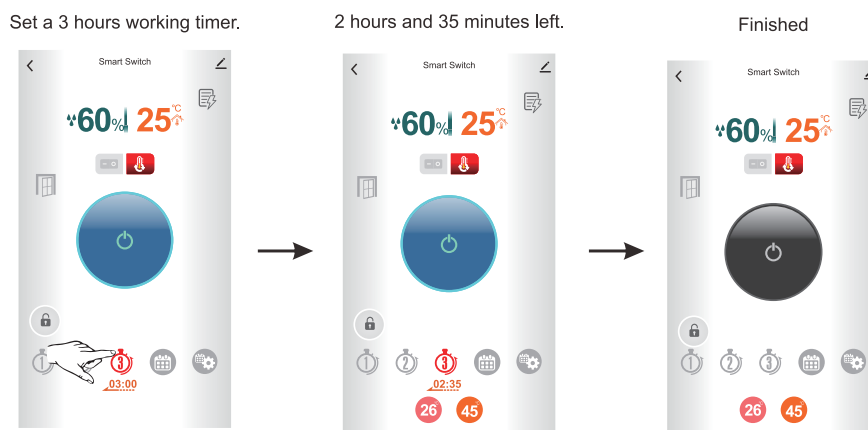
Smart Switch 01 Control Under Thermo Mode

Timer Mode

These are 3 options in timer mode, 1 hour, 2 hours and 3 hours. When the device enters timer mode, it will work on the condition of set temperatures for a period of time you selected.



When Timer starts to work, the remaining work time appears under its symbol.



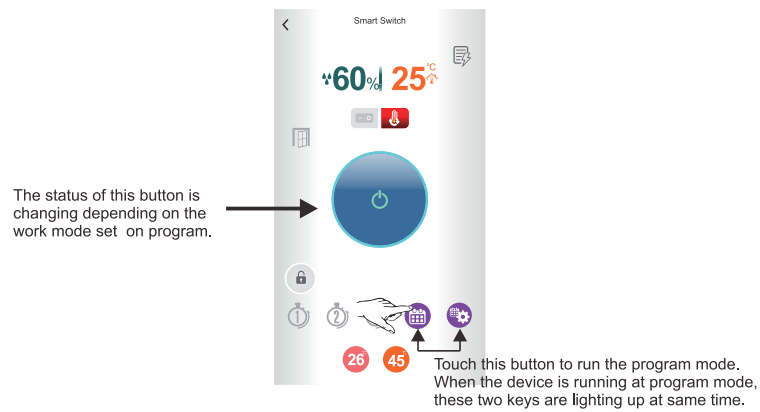


Smart Switch 01 Control Under Thermo Mode

Program Mode

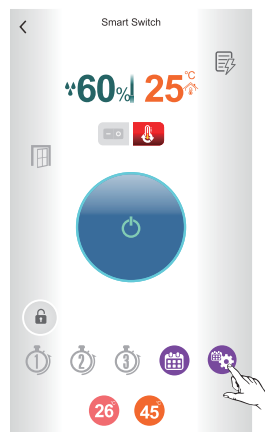
Touching the key of Program Mode, you'll find the device is working at Activate mode. That is a default.

Running in Program Mode.



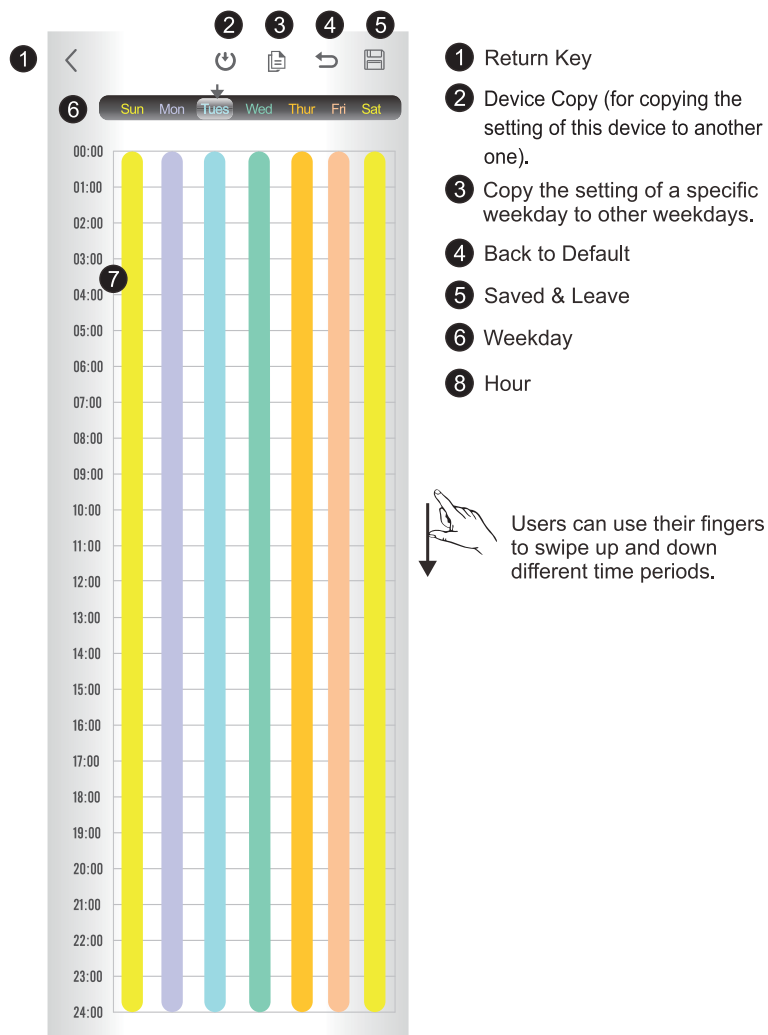
Program Setting

Touch "⚙️" to start the weekly setting, it allows you to schedule how the device works for every single hour in a week.



• Introduction of the Weekly Time Table

Program Setting Interface. Defaults are all set to “On” for every hour.

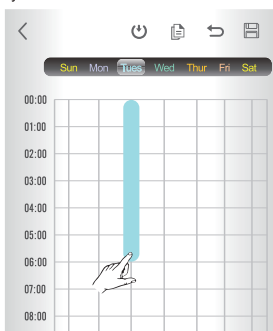


• Set the activating time on table.

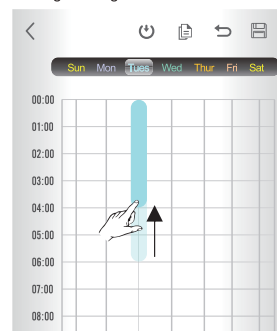
Touch the cross point of expecting date and starting time.



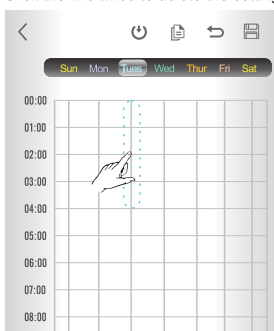
And drag the line of time to where you want to end.



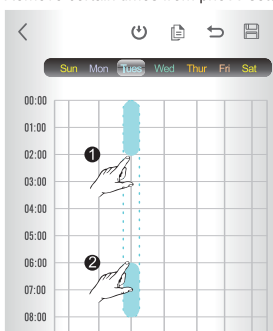
The time span could be shortened by moving the finger backward.



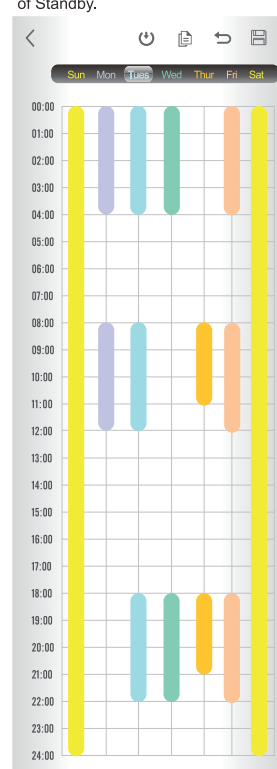
Click the line twice to delete the setting.



Remove certain times from pho AI setting.



An example of a whole week running program.
The blank area represents the times of Standby.





Smart Switch 01 Control Under Thermo Mode

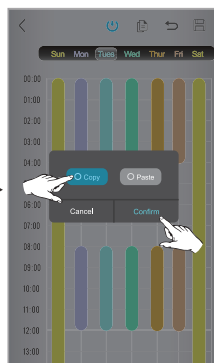
• Device Copy

This function allows user to copy the whole setting from one device to another, Following are the steps.

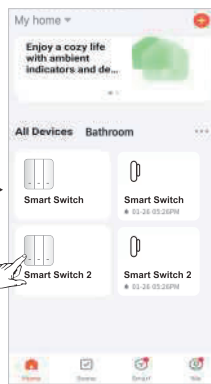
Use this "🔌" icon to make or paste a Program copy.



Select "Copy" to make a program copy on your phone. Or select "Paste" to give the copy to this device.



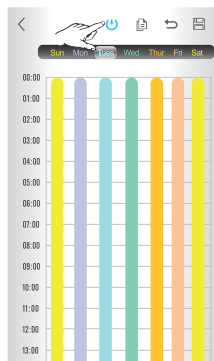
Go back to Tuya's console to choose a device for pasting the copied program onto it.



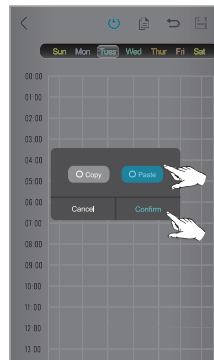
Touch "🔌" to go into weekly program setting page.



Touch the "🔌" icon of "Program Copy".



Selected "Paste" and touched "Confirm" to complete the process.



When the program was copied to this device, new setting came out on screen. The program copy could be pasted into multiple devices, but you have to repeat the paste job one by one.



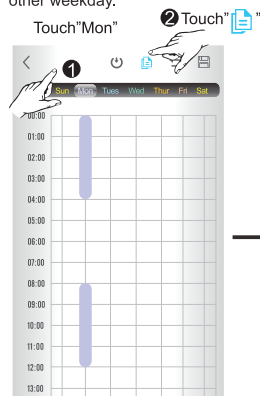


Smart Switch 01 Control Under Thermo Mode

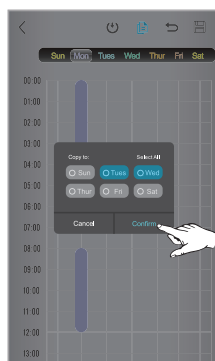
- **Copy the setting of a specific weekday to other weekdays.**

This function allows user to copy the setting of a weekday to another. Following is an example of how the setting of Monday be copied to both Tuesday and Wednesday.

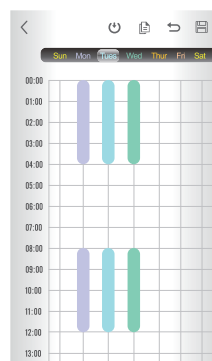
Copy the setting of Monday to other weekday.



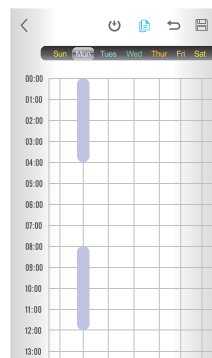
Select "Tues" and "Wed" from the list, then "confirm" it.



Tuesday and Wednesday have already replicated Monday settings.



After cancelled the copy selection, the screen goes back to previous setting page.

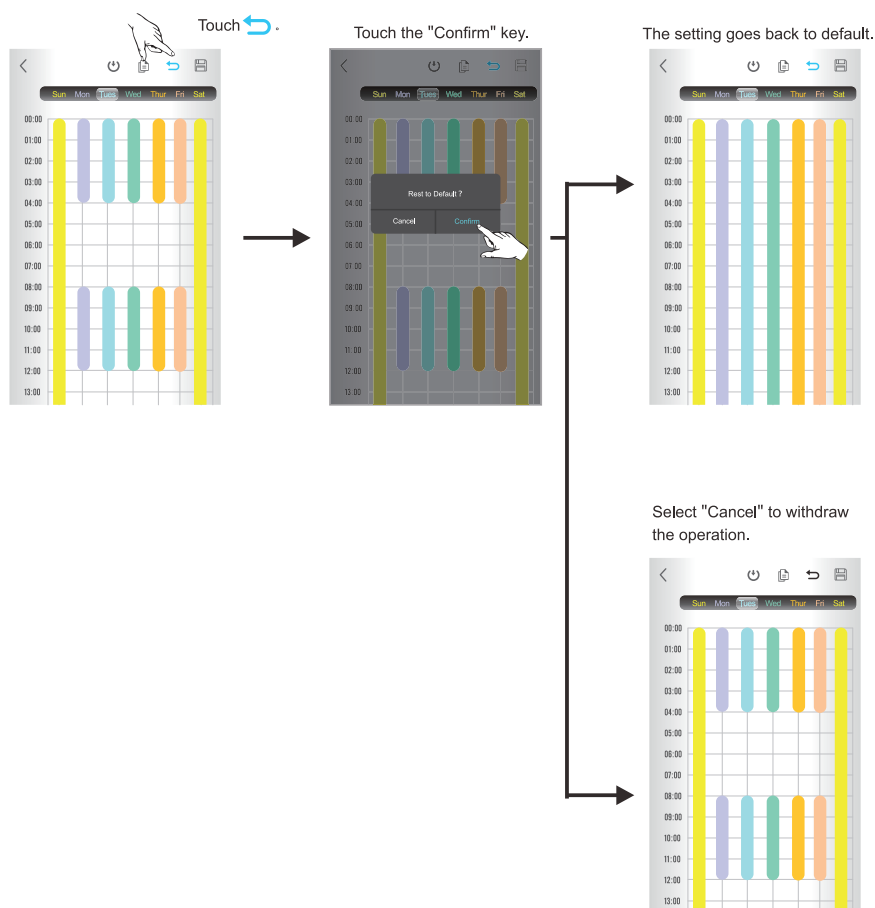




Smart Switch 01 Control Under Thermo Mode

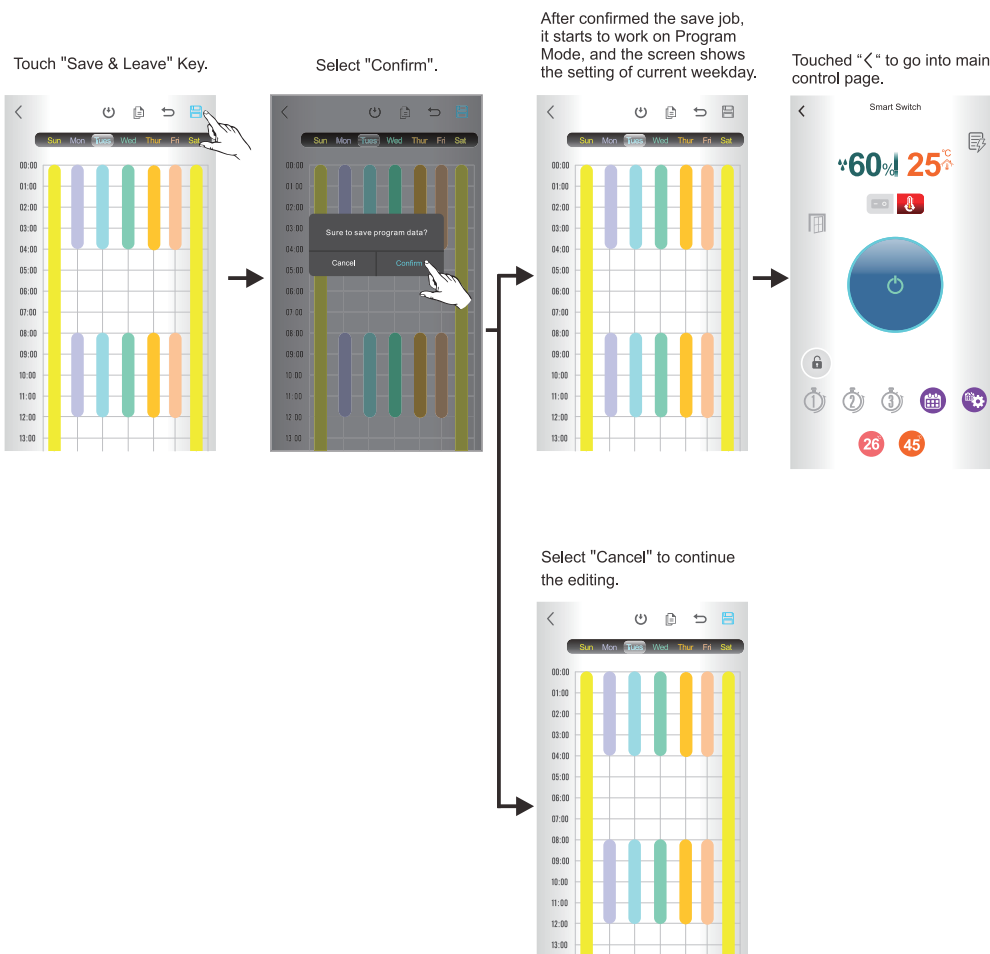
• Back to Default

Use this functional key to retrieve the default setting of a weekday. Following is an example of how to retrieve the default setting.



● To End the Program Setting & Starting the Program Mode

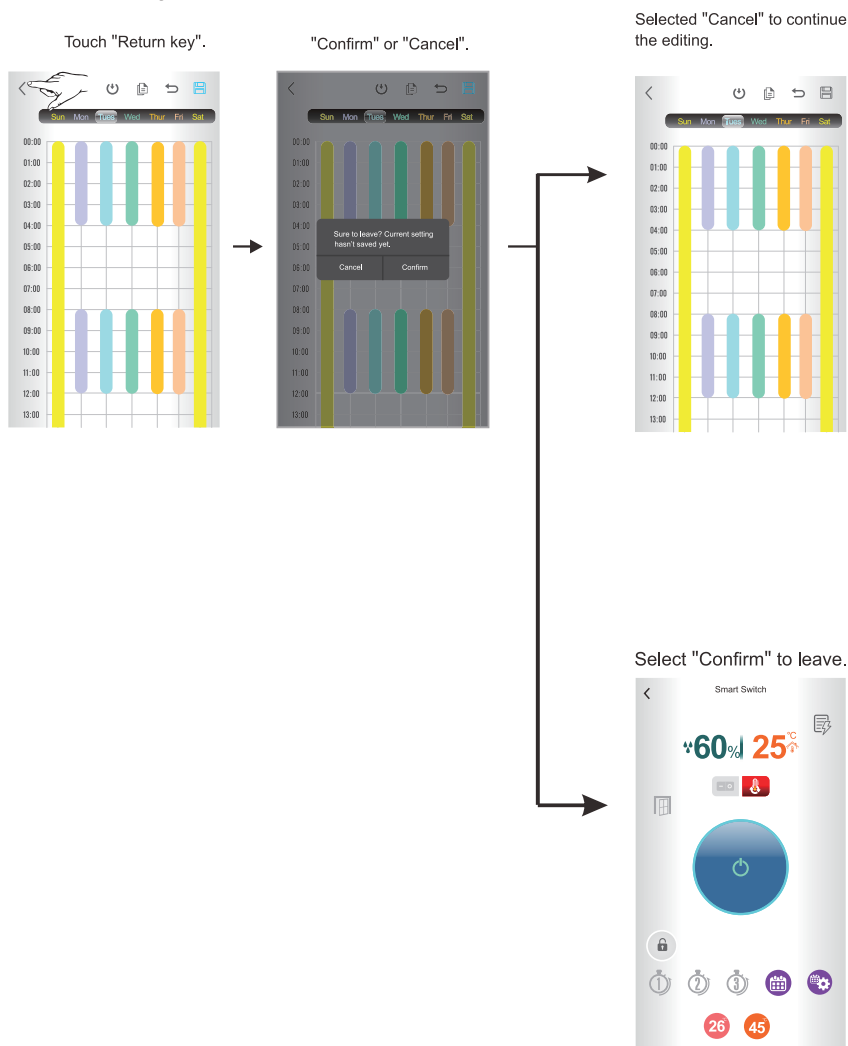
After you completed the setting, follow these steps to make the Program Mode running.





Smart Switch 01 Control Under Thermo Mode

If the Return key was touched, you are able to leave the editing in the condition of scrapping the new setting.



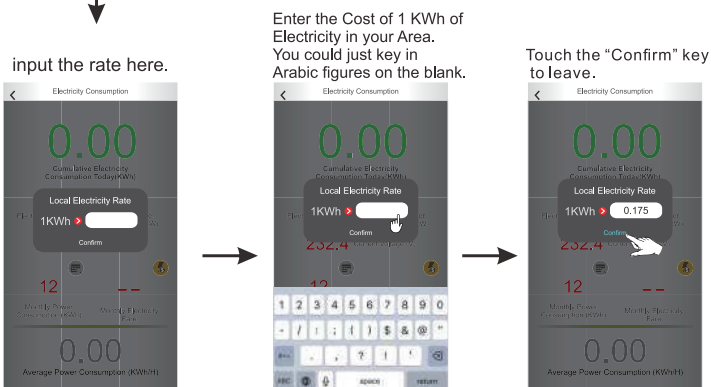


Smart Switch 01 Control Under Thermo Mode

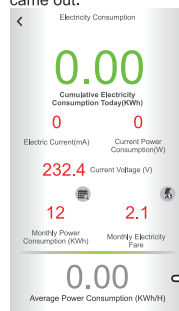
Electricity Usage

Users can use Electricity Usage to inquire about the current electricity consumption and also input the unit price of electricity to monitor the amount of money spent on the electricity consumed at any time.

Input local electricity rate.



The monthly expense came out.



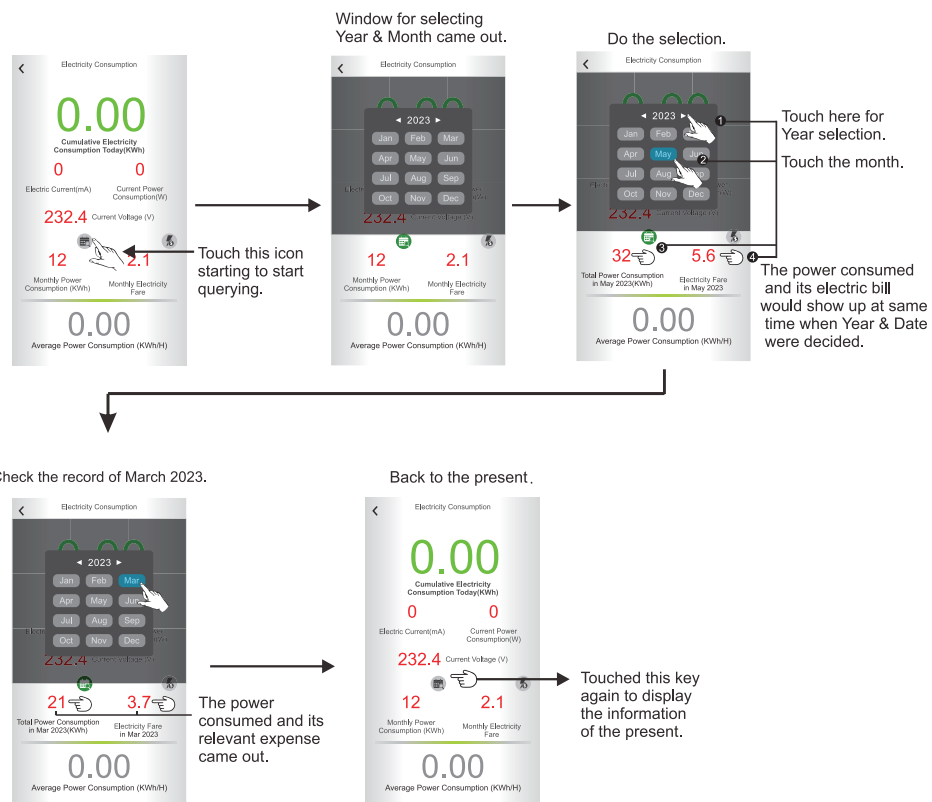
Average Power Consumption calculated starting from 00:00 daily, with the value updated every hour, and displayed only when a full hour has elapsed.



Smart Switch 01 Control Under Thermo Mode

- **Review the past power consumption and electric bill.**

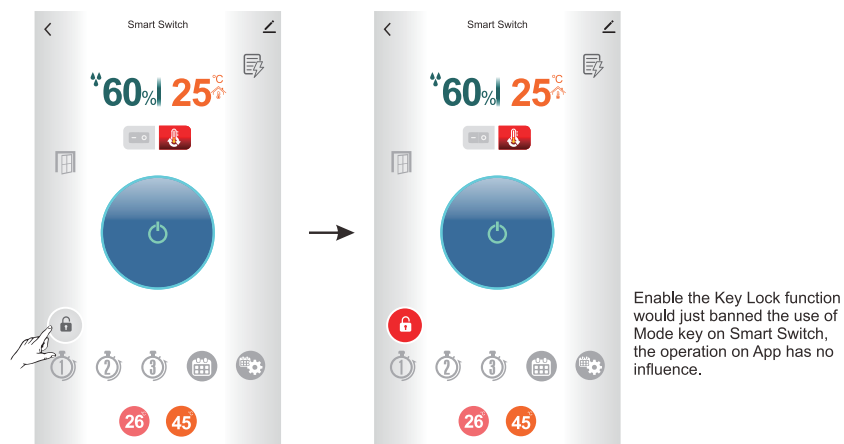
Users can query their electricity consumption and costs for each month in the past five years using "Electricity Consumption". You can follow the instructions in the example below to perform the query.



This device would just store the records for 5 years. The data recorded over 5 years would be abandoned automatically.

Key Lock

This function allows user to lock down functional keys on Smart Switch. Touching the "🔒" symbol on screen could activate this function. The operation on App would not be restricted.



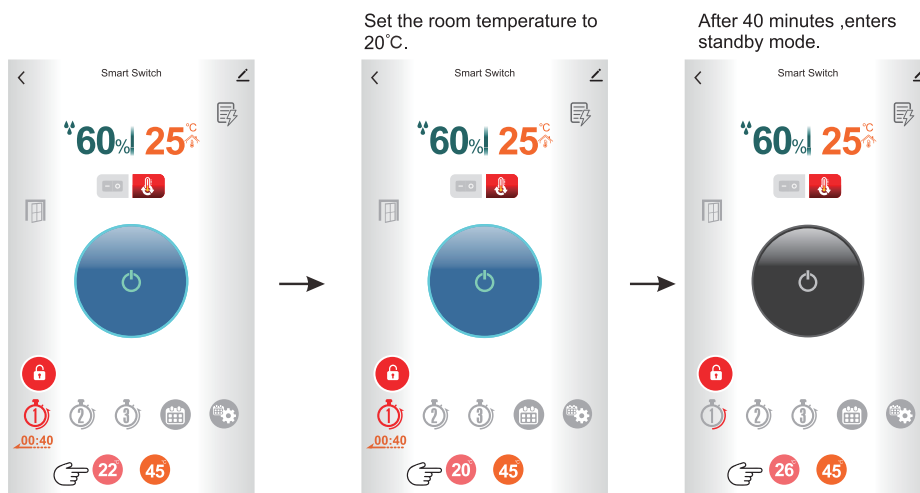
- The Room temperature setting defaults to 22°C when activating the 40 minute timer in Key Lock.





Smart Switch 01 Control Under Thermo Mode

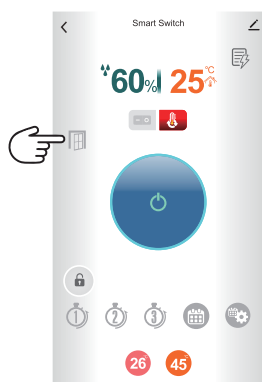
- When activating the 40 minute timer, if the room temperature setting is adjusted to 20 °C, the previous room temperature setting will be restored upon entering Standby mode after the 40 minute timer ends.



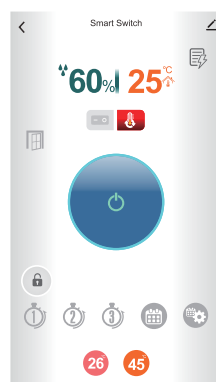
Window Sensor

When Window / Door Sensor is successfully connected to Smart Switch in the App, you'll find " " appears on screen.

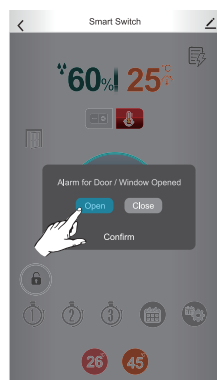
This " " would appears on screen when sensor was installed.



If there is no installed sensor be detected, the icon would be hidden.



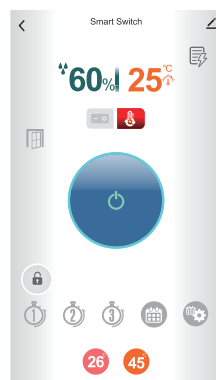
Touched the icon to enable the alarm sound or turn it off.



Touched "Confirm" to leave the setting.

Confirm

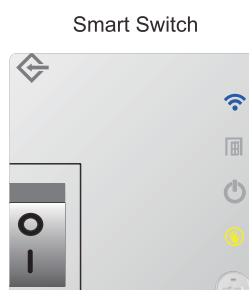
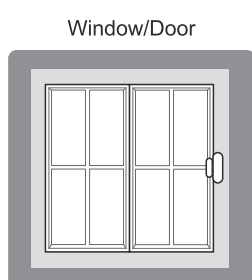
Back to prime page.



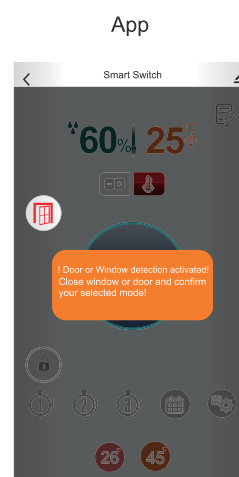
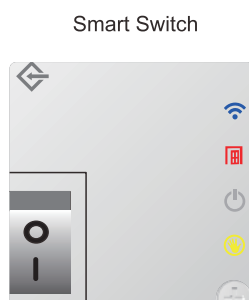


Window/Door Open & Close

- **Window/Door closed.**



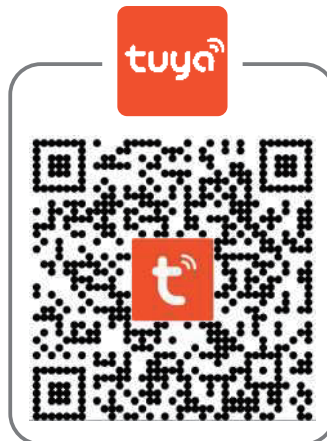
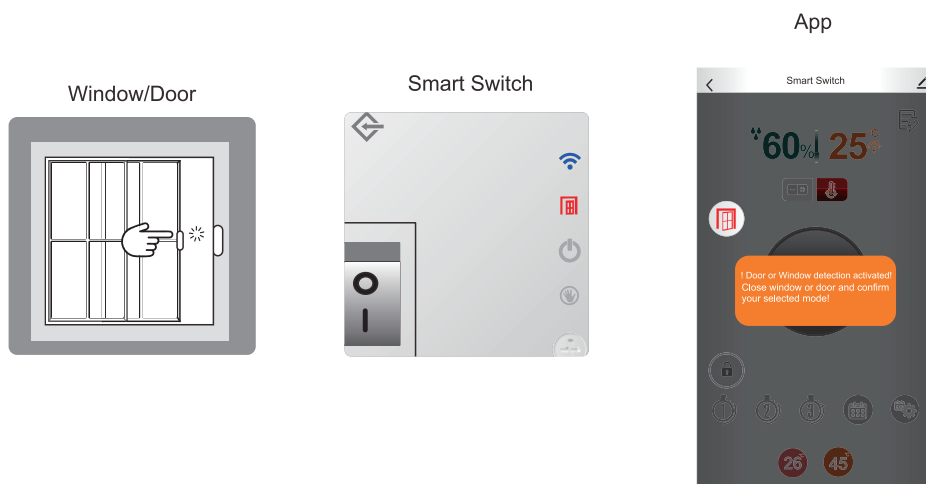
- **Window/Door has just been opened.**





Window/Door Open & Close

- Window/Door was opened for more than a minute.



Sky Vision Electronics LTD

Room 703, Shenghe business building, Jufu road, Qingxi town, Dongguan city, Guangdong, China

China

calvin@skyvision-dg.com

Taiwan

sh@skyvision-dg.com

EU

ajs@skyvision-dg.com

FCC Warning:

This equipment has been tested and found to comply with the limits for a Class B digital device, pursuant to part 15 of the FCC Rules. These limits are designed to provide reasonable protection against harmful interference in a residential installation. This equipment generates, uses and can radiate radio frequency energy and, if not installed and used in accordance with the instructions, may cause harmful interference to radio communications. However, there is no guarantee that interference will not occur in a particular installation. If this equipment does cause harmful interference to radio or television reception, which can be determined by turning the equipment off and on, the user is encouraged to try to correct the interference by one or more of the following measures:

- Reorient or relocate the receiving antenna.
- Increase the separation between the equipment and receiver.
- Connect the equipment into an outlet on a circuit different from that to which the receiver is connected.
- Consult the dealer or an experienced radio/TV technician for help.

Caution: Any changes or modifications to this device not explicitly approved by manufacturer could void your authority to operate this equipment.

This device complies with part 15 of the FCC Rules. Operation is subject to the following two conditions:

(1) This device may not cause harmful interference, and (2) this device must accept any interference received, including interference that may cause undesired operation.

This equipment complies with FCC radiation exposure limits set forth for an uncontrolled environment. This equipment should be installed and operated with minimum distance 20cm between the radiator and your body.