

IMPORTANT SAFETY INFORMATION

When using electrical products, basic precautions should always be practiced including the following:

1. READ AND FOLLOW ALL SAFETY INSTRUCTIONS.

2. This device is rated for indoor and outdoor use.
3. Risk of Electric Shock! When used outdoors, install only to a covered Class A GFCI protected receptacle that is weatherproof with the power unit connected to the receptacle. If one is not provided, contact a qualified electrician for proper installation. Ensure that the power unit and cord do not interfere with completely closing the receptacle cover.
4. Use this power unit only with the product it is intended for, and marked for use with, it is not for use with other products/items
5. This is an electric product-not a toy! To avoid risk of fire, burns, personal injury and electric shock it should not be played with or placed where small children can reach it.

Model: WIFISYNC 120VAC, 60Hz, 0.02A, 1.2W

IMPORTANT, RETAIN FOR FUTURE REFERENCE: READ CAREFULLY

NOTICE: All electrical connections must be in accordance with local and national standards, National Electric Code (N.E.C.) in the US. If you are unfamiliar with proper electrical wiring connections obtain the services of a qualified electrician. Remove the device and the mounting package from the box and make sure that no parts are missing by referencing the illustrations on the installation instructions.



WARNING: RISK OF SHOCK.

House electronic current can cause painful shock or series injury unless handle properly.



CAUTION: This product is a grounded device.

- The 3-prong plug is only intended for use in a three-pronged grounded outlet.
- Connect this unit to a Ground Fault Circuit Interrupting (GFCI) outlet.



WARNING: These products may represent a possible shock or fire hazard if improperly installed or attached in any way.

Products should be installed in accordance with this install guide, current electrical codes and/or the current National Electric Code (N.E.C.).

FCC STATEMENT

This device complies with part 15 of the FCC Rules. Operation is subject to the following two conditions: (1) This device may not cause harmful interference, and (2) this device must accept any interference received, including interference that may cause undesired operation.

Note: This equipment has been tested and found to comply with the limits for a Class B digital device, pursuant to part 15 of the FCC Rules. These limits are designed to provide reasonable protection against harmful interference in a residential installation. This equipment generates, uses and can radiate radio frequency energy and, if not installed and used in accordance with the instructions, may cause harmful interference to radio communications. However, there is no guarantee that interference will not occur in a particular installation. If this equipment does cause harmful interference to radio or television reception, which can be determined by turning the equipment off and on, the user is encouraged to try to correct the interference by one or more of the following measures: Reorient or relocate the receiving antenna. Increase the separation between the equipment and receiver. Connect the equipment into an outlet on a circuit different from that to which the receiver is connected. Consult the dealer or an experienced radio/TV technician for help. Any changes or modifications not expressly approved by the party responsible for compliance could void the user's authority to operate the equipment.

The antenna is permanently attached, can't be replaced.

This equipment complies with FCC's RF radiation exposure limits set forth for an uncontrolled environment. The antenna(s) used for this transmitter must be installed and operated to provide a separation distance of at least 20 cm from all persons and must not be collocated or operating in conjunction with any other antenna or transmitter. Installers must ensure that 20 cm separation distance will be maintained between the device and users.

PRODUCT MANUAL

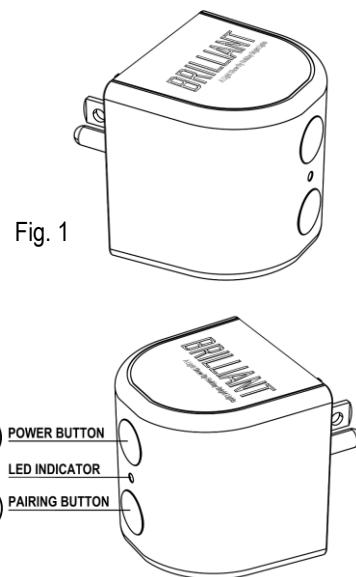
1. This Wi-Fi Smart Bridge can extend a 200ft of Wi-Fi range of your home Wi-Fi network and helps with connectivity for your **Wi-Fi devices**.
2. This Wi-Fi Smart Bridge has a 100ft control range and will command all paired **MESH devices** within 100ft of the Wi-Fi Smart Bridge
 - All the MESH devices are equipped with a signal repeater that will repeat all the commands to all other MESH devices with 100ft.
 - Place MESH devices within 100ft of at least one other MESH device creates a control network and allows for unlimited control range as long as there is a functioning MESH device within 100ft to relay the command.

For example: You can install a MESH device, then another MESH device 100ft away from the first MESH device, then continue to install 6 more MESH devices in this way, so the last MESH device is 800ft away. Using this relay technology, the Wi-Fi Smart Bridge will control the farthest MESH device that is 800ft away.
3. **Only supports 2.4GHz Wi-Fi Networks.** Be Sure to connect to a 2.4GHz home Wi-Fi network that covers your installation location

PRE-INSTALLATION:

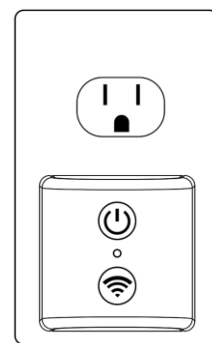
1. PART LIST: 1 set of Wi-Fi Smart Bridge as Fig.1
2. BUTTON FUNCTIONS:
 - POWER BUTTON:
 - (1). Press to turn the Wi-Fi Bridge ON or OFF.
 - (2). Press and hold for 3 seconds to pair with BRILLIANT Lights app.
 - (3). Press and hold for 60 seconds which device will be on Factory Reset Mode.
 - PAIRING BUTTON:
 - (1). Press and hold for 3 seconds to pair with BRILLIANT Lights app.
 - (2). Press and hold for 60 seconds which device will be on Factory Reset Mode.
 - (3). Press three times to pair with MESH device (for further MESH device use only)
 - (4). Press five times to pair with MESH device Remote (for further MESH device use only)
3. LED INDICATOR:

LED INDICATOR	Wi-Fi BRIDGE STATUS
Blue Off	Device is turned off.
Blue Steady	Device is working, or device pairing completed.
Blue Fade in & Fade out	Ready to pair with BRILLIANT Lights app
Blue Flashing	Ready to pair with MESH device and MESH device remote



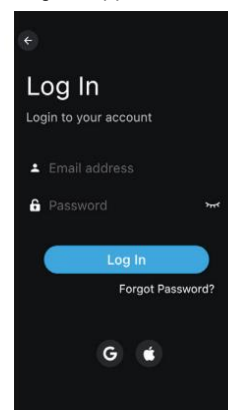
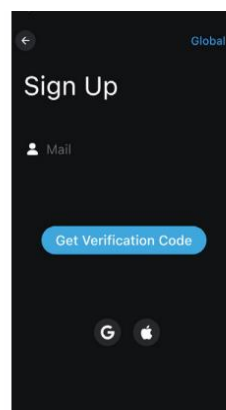
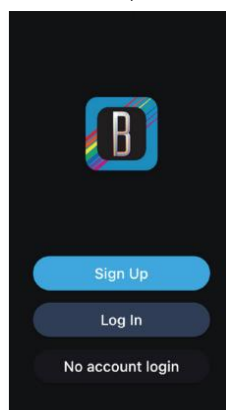
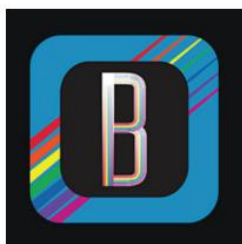
HOW TO USE Wi-Fi SMART BRIDGE?

1. Plug the Wi-Fi bridge into any indoor receptacle or outdoor GFCI outlet with cover, and the LED indicator of Wi-Fi bridge will be lighted up BLUE automatically which indicates it's ready and active.
2. POWER BUTTON:
 - Press the button once: The LED indicator will be BLUE STEADY indicating the Wi-Fi Bridge is working.
 - Press the button once: The LED indicator will be off, and the devices connected to this Wi-Fi Bridge will be off. (NOTE: The function of amplify Wi-Fi Signal is still on for device added to this Wi-Fi Bridge use)
 - BRILLIANT app Pairing: Press and hold for 3 seconds, the LED indicator will start BLUE FADE IN & FADE OUT that means it's ready to pair with BRILLIANT Lights app, the LED indicator will change to BLUE STEADY when it is paired to BRILLIANT Lights app SUCCEFULLY.
 - Factory Reset Mode: Press and hold for 60 seconds, the LED indicator will start BLUE FADE IN & FADE OUT, and change to BLUE FLASHING 5 times at last 2 seconds, then change to BLUE STEADY indicating it is on Factory Reset Mode.
3. PAIRING BUTTON:
 - BRILLIANT app Pairing: Press and hold for 3 seconds, the LED indicator will start BLUE FADE IN & FADE OUT that means it's ready to pair with BRILLIANT Lights app, the LED indicator will change to BLUE STEADY when it is paired to BRILLIANT Lights app SUCCEFULLY.
 - Factory Reset Mode: Press and hold for 60 seconds, the LED indicator will start BLUE FADE IN & FADE OUT, and then change to BLUE FLASHING 5 times at last second, then change to BLUE STEADY indicating it's on Factory Reset Mode.
 - MESH device Pairing: Press three times, the LED indicator will start BLUE FLASHING indicating it is ready to pair. Press POWER BUTTON once to cancel the pairing when the indicator is BLUE FLASHING.
 - MESH Remote Pairing: Press five times, the LED indicator will start BLUE FLASHING indicating it is ready to pair. Press POWER BUTTON once to cancel the pairing when the indicator is BLUE FLASHING.



HOW TO USE Wi-Fi SMART BRIDGE ON BRILLIANT Lights APP?

1. APP DOWNLOAD: Go to App Store/Google Play Store (or Scan QR code) to download and install the BRILLIANT Lights App.

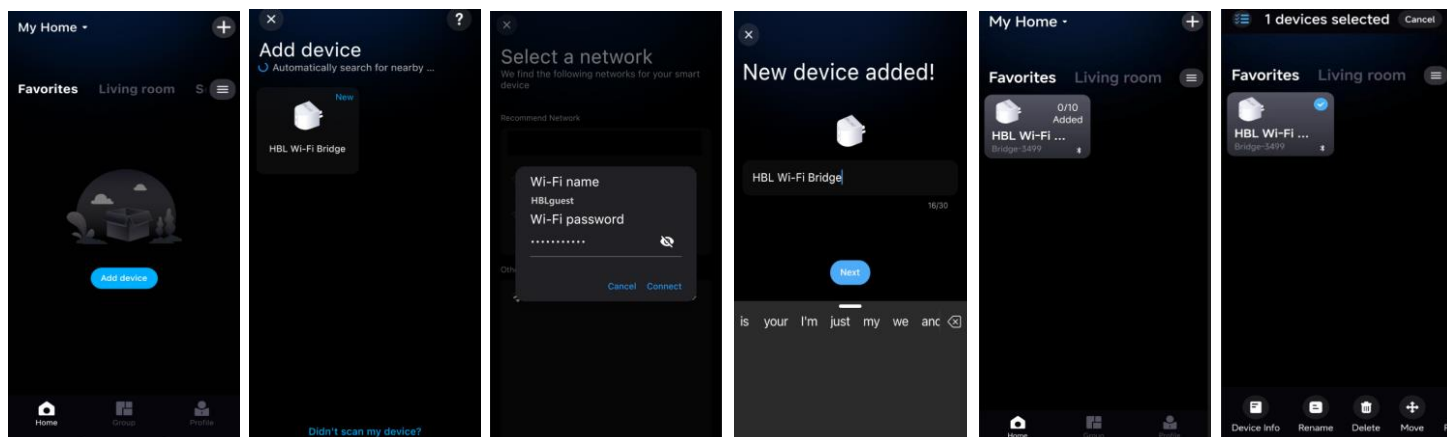


2. BRILLIANT Lights APP SETUP:
 - Register (Sign Up) or log in to your account, please follow the setup instructions on the app.

3. How to pair the Wi-Fi Smart Bridge to BRILLIANT Lights app for BRILLIANT items use?

(NOTE: Need to pair the Wi-Fi Bridge to Brilliant Lights app FIRST before using!)

- Plug the Wi-Fi Bridge into any indoor receptacle or outdoor GFCI outlet with cover, and the LED indicator of Wi-Fi Bridge will be BLUE which indicates it is ready and active.
- There are TWO methods to use when pairing the Wi-Fi Bridge on the app, choose either (1) or (2).
 - (1). Click "Add device" or click "+" at the upper right corner on the app, and the devices list can be added will be shown on the interface, select the Wi-Fi Bridge to add into the app which indicator of Wi-Fi bridge will be **BLUE FADE IN & FADE OUT**, then select your Home Wi-Fi network and fill in the Wi-Fi password for this Wi-Fi Bridge (e.g.: 12345678)
(Note: All device added should be under the SAME Wi-Fi network)
 - (2). Press the PAIRING BUTTON of Wi-Fi Bridge (Fig.1) and HOLD for 3 seconds, the indicator of Wi-Fi Bridge you want to pair will be BLUE FADE IN & FADE OUT or just light up that telling you it is ready to pair. Select the Wi-Fi bridge you want to add into the app, then select your Home Wi-Fi network and fill in the Wi-Fi password for this Wi-Fi Bridge (e.g.: 12345678)
(Note: All device added should be under the SAME Wi-Fi network, and up to 10 devices can be added to each Wi-Fi Bridge.)
- The indicator of Wi-Fi Bridge will be changed to **BLUE STEADY** after it is paired to Home Wi-Fi network successfully.
- You can rename the Wi-Fi Bridge and select the room or place that this device to remember easily.
- Press and hold the Wi-Fi Bridge icon, you can check all the details of this Wi-Fi Bridge at the bottom, including "Device Info" button to check the spec of this Wi-Fi Bridge, "Rename" button to revise the device name, "Delete" button to delete it on the app, "Move" button to move this device to other room, and others.

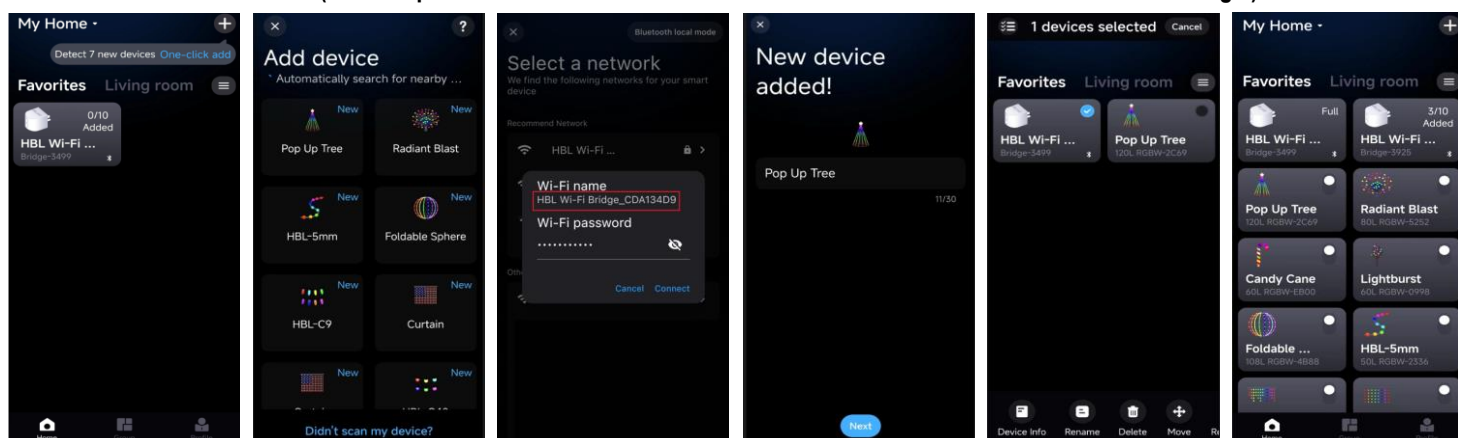


4. How to add the Brilliant Lights items to Wi-Fi Smart Bridge?

(NOTE: Same pairing methods as BRILLIANT items which pair to Home Wi-Fi network)

- Light up your BRILLIANT device and enable the Bluetooth function of the smartphone.
- Do not press "One-click add" at the upper right corner on the app which all detected items will be added into the Wi-Fi network that your smartphone is using automatically. Add the item one by one as below methods if you want to add them into the Wi-Fi Bridge.
- There are TWO methods to use when pairing the BRILLIANT items to the Wi-Fi Bridge on the app, choose either (1) or (2).
 - (1). Click "Add device" or click "+" at the upper right corner on the app, and all the devices can be added will be shown on the interface, select the BRILLIANT item you want to add into this Wi-Fi Bridge which item will be **RED & GREEN ALTERNATING** or just be lit up, then select the Wi-Fi Bridge you want to add it in and fill in the Wi-Fi Bridge password.
(Note: Wi-Fi Bridge password is same as the password you just filled in to pair to your Home Wi-Fi network, e.g.: 12345678)
 - (2). Press the controller box button of BRILLIANT item and HOLD for 3 seconds, the device you want to pair to this Wi-Fi Bridge will be **FLASHING RED** telling you it is ready to pair. You can keep holding the button or release the button when the light set is FLASHING RED. Select the BRILLIANT item you want to add into this Wi-Fi bridge on the app, then select the Wi-Fi Bridge you want to add in in and fill in the Wi-Fi Bridge password.
(Note: Wi-Fi Bridge password is same as the password you just filled in to pair to your Home Wi-Fi network, e.g.: 12345678)
- The whole light set will be changed to **GREEN STEADY** and the indicator of Wi-Fi Bridge will change to BLUE STEADY after it's added to this Wi-Fi Bridge successfully.
- You can rename the item and select the room or place that this device to remember easily.
- Press and hold the Wi-Fi Bridge icon, you can check all the details of this Wi-Fi Bridge at the bottom including "Device Info", "Rename", "Delete", "Move" or others.
- On the upper right corner of the Wi-Fi Bridge icon, you can check how many devices had been added into this Wi-Fi Bridge already. For example: Each Wi-Fi Bridge icon has its own product code for your separate it easily. (e.g.: Bridge-3499, Bridge-3925)
"3/10 added" on Bridge-3925 represents 3 devices had been added into this Wi-Fi Bridge.
"Full" on Bridge-3499 represents 10 devices had been added into this Wi-Fi Bridge already and no more devices can be added into it. Please find the point 5 as below to see more details and using of Wi-Fi Bridge.

(NOTE: Up to 10 receivers / controller of Wi-Fi devices can be added to each Wi-Fi Bridge.)



5. IMPORTANT INFORMATION FOR THE MAX NUMBER CAN BE ADDED TO WI-FI BRIDGE AND USING.

How to CHECK and DELETE the device information of this Wi-Fi Bridge?

- Up to 10 receivers/controllers of Wi-Fi devices can be added into each Wi-Fi Bridge which will show “Full” on the upper right corner of the Wi-Fi Bridge icon when it added 10 devices already.
- You can delete or re-add the Brilliant item to this Wi-Fi Bridge or add the Brilliant item to another Wi-Fi Bridge or Home Wi-Fi network.
- Press the Wi-Fi Bridge icon if you want to check the details, you will see all the spec of this Wi-Fi Bridge connected to which home Wi-Fi network, connection status, IP address, Local IP address, WiFi Clients (Wi-Fi Device use) and Mesh Clients (Mesh Device use). Then click the “WiFi Clients”, you can check what Wi-Fi items had been added into this Wi-Fi Bridge and their status, the Client list will show you all the items had been added to this Wi-Fi Bridge, you can press “Delete” button of that item to delete it, or press “Clear all devices” button to delete all the items on this Wi-Fi Bridge, all light sets will be RED/GREEN FLASHING at this time to indicate “Delete” successfully. Now you can add other Brilliant items into this Wi-Fi Bridge for your Brilliant light show!
- Click the “Mesh Clients” which is for further MESH device use, you can check what MESH items had been added into this Wi-Fi Bridge.
- A limit of max number of 10 receivers can be added to each Wi-Fi Bridge, you should delete the useless device information of that Brilliant item added on this Wi-Fi Bridge before for other Brilliant devices add into this Wi-Fi Bridge, the steps as following.
 - (1). Delete the **Online Item** of this Wi-Fi Bridge directly on the Home interface (e.g.: Item # Radiant Blast)
Hold the item icon that you want to delete from this Wi-Fi Bridge, press “Delete” button at the bottom of Home interface to delete it, and the useless device information of this deleted Brilliant item will be cleared on the “Client list” of this Wi-Fi bridge automatically within 1 minutes, you will see the update number added of Wi-Fi Bridge on this Wi-Fi Bridge icon, now you can add other Brilliant item into this Wi-Fi Bridge. (e.g.: Full changed to 9/10 added)
 - (2). Delete the **Offline Item** of this Wi-Fi Bridge directly on the Home interface. (e.g.: Item # Icicle Light)
Hold the item icon you want to delete from the Wi-Fi Bridge, press “Delete” button at the bottom of Home interface to delete it, and the useless device information of this deleted Brilliant item will **NOT BE CLEARED** on the “Client list” of this Wi-Fi bridge automatically, you CAN NOT add other Brilliant item into this Wi-Fi Bridge at this time as the useless information of this deleted device still occupied the position on this Wi-Fi Bridge.
Press this Wi-Fi Bridge icon, and then click the “WiFi Clients”, you will see an unknown item with a sign of “-“ on the “Client list” that indicates the item you just deleted from this Wi-Fi Bridge, press “Delete” button on that unknown item, the useless device information of this deleted Brilliant item will be cleared within 5 minutes, the light set will be RED/GREEN FLASHING to indicate this item had been deleted totally on the Wi-Fi Bridge, and then you will see the update number added of Wi-Fi Bridge on this Wi-Fi Bridge icon, now you can add other Brilliant item into this Wi-Fi Bridge.
 - (3). **Offline Item** of this Wi-Fi Bridge on the Home interface. (e.g.: item # HBL-5mm)
This offline item is still on this Wi-Fi Bridge, but the item icon and its device information will turn to grey to indicate it is Offline at this time, it will be shown up again on the Wi-Fi Bridge icon after the item light up.
 - (4). **Delete the Wi-Fi Bridge on the app:**
Press and hold the Wi-Fi Bridge icon that you want to delete it, press the “Delete” button at the bottom of Home interface, you can see two delete options of “Remove Bridge sub-device” and “Delete Bridge”.
 - **Remove Bridge sub-device:** Select this to clear all the device information on this Wi-Fi Bridge which all the items added into this Wi-Fi Bridge before will be RED & GREEN FLASHING, you can add the items you want into this Wi-Fi Bridge again. This is same function as “Clear all devices” on the Client list of this Wi-Fi Bridge.
 - **Delete Bridge:** Select this to delete this Wi-Fi Bridge on the app, you have to re-pair this Wi-Fi Bridge for further use.
Note: All the devices information of this Wi-Fi Bridge added before STILL remain on it, you can control these devices directly after you re-pair this Wi-Fi Bridge on the app.

