



SCAN & FOLLOW US



Welcome to send email if any problem.

Support email: support@tmezon.com

Official Website: <http://www.tmezon.com>



tmezon

Operation instruction

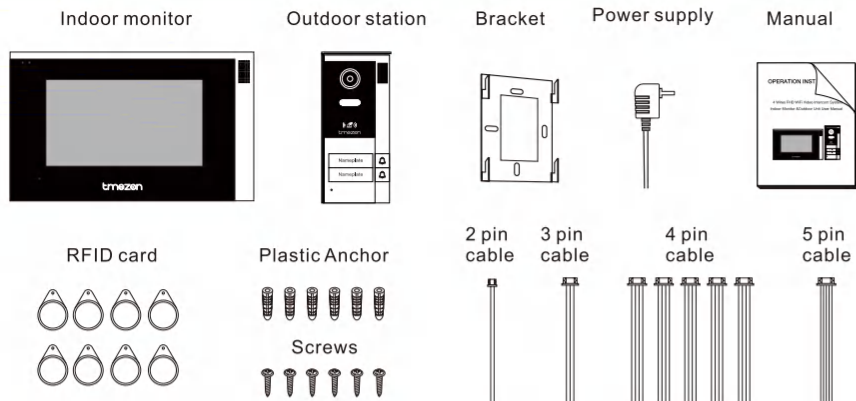
Video doorphone(Monitor)

User Manual

Content

English	1-22
Français	23-44
Deutsche	45-66
Italiano	67-88
Español	89-110

Packing list



Function Description

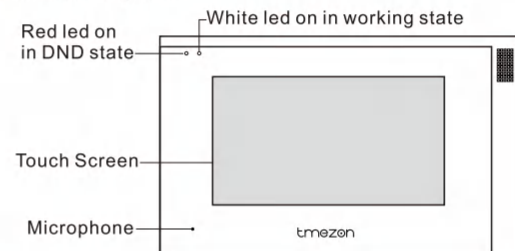
Indoor monitor	
Screen	7" TFT LCD screen
Display Resolution	7"(1024*600)
Standard	PAL/NTSC
Intercom Mode	Two-way intercom
Power Consumption	500-1000mA
Power supply	External power DC13.5V
Operating Temperature	0 ~ +50°C
Installation	Surface mount
SD Card Max Capacity	2GB~128GB class 10 TF card(micro SD card) Note: Read and write speed≥Class10
Motion Detection	Yes
System Capacity	6 indoor monitors + 2 door stations + 2 cameras/alarms
Video Input Signal	AHD2.0
Functions	Unlock/Monitor/Intercom/Remote control/Record
Advantages	Clock / Voice Message/cloud intercom

Outdoor station

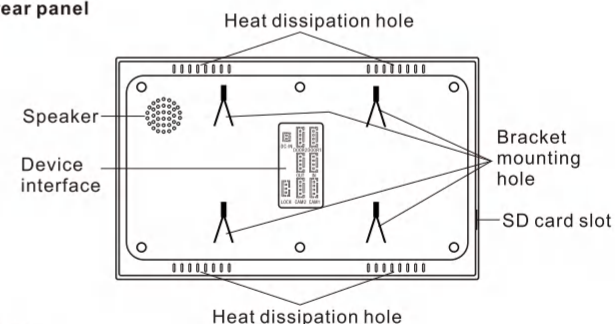
Camera	1/3 inch CMOS camera
Definition	1080P (1920*1080)
Standard	PAL / NTSC
View angle	125° (H.)
Leds for night	IR Leds
Day / Night	IR-Cut
Power consumption	Maximum 300mA
Power supply	Supplied from indoor monitor
Operating Temperature	-20°C ~ +60°C
Installation	Surface mount
Access control	RFID card / Phone APP remote
Supported locks	Current lock, NO / NC lock

Overview

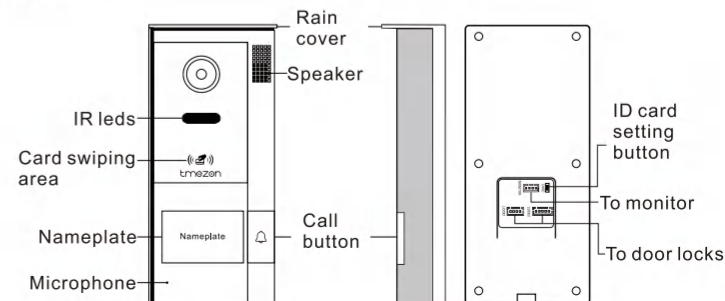
Indoor monitor front panel



Indoor monitor rear panel

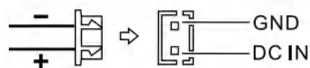


Outdoor station



Note on wiring connection

- ❗ The power supplies for electric lock, CCTV camera and extension cables are not included in the package, user can purchase according to actual requirement.
- ❗ In the standard delivery the system supports locks with NO (Normally Open) and NC (Normally Close) unlocking method.
NO mode means that in the normal state the dry contact is opened so the lock is kept under constant closed state. If the unlocking push - button is pressed and the dry contact is changed to closed, then the lock is released.
NC mode means that in the normal state the dry contact is closed so the lock is kept under constant opened state. If the unlocking push - button is pressed and the dry contact is changed to opened, then the lock is released.
- ⚠ Please check that the socket of power supply(silk printing DC IN) is correct if you connect the external switching power supply, otherwise it will damage the device. Please first pull out the DC power plug before installation of device(Shown as below).



- ❗ Wiring connection according to the following to avoid interference:

A. Wiring connection between outdoor doorbell and IP indoor monitor.



B. Wiring connection between indoor monitors.



- ❗ Please note the silk printing marked on PCB in order to avoid incorrect connecting. The wiring connection requirement(The actual effect and the quality of wire rod has the very big relations):

1) 4C ordinary unshielded wire and shielded wiring

Distance $\leq 28\text{m}$ (4*0.2mm²); Distance $\leq 50\text{m}$ (4*0.3mm²); Distance $\leq 80\text{m}$ (4*0.5mm²)

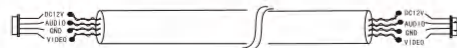


2). 3C ordinary unshielded + video cable(RG-59) connection method



(Distance ≤ 100 meters)

3). Category 5 network cable connection (not recommended)

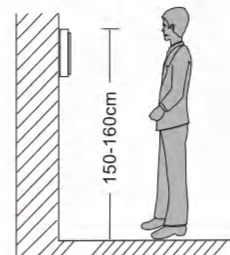


(Unshielded network cable distance ≤ 50 meters)

- ❗ When the distance from the outdoor doorbell to the indoor monitor is too far, maybe over 50m or 60m, please make sure that the input voltage to the outdoor doorbell must reach 11v.

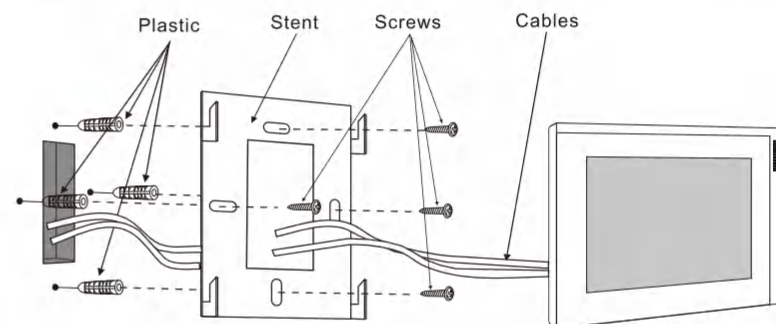
Installation

How to install the indoor monitor

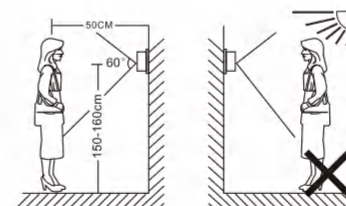


⚠ Note:

- * Please be far from the devices with intense radiation: TV, DVR, etc.
- * Do not disassemble privately to avoid the electric shock.
- * Do not drop, shake or knock the device, otherwise will damage the elements.
- * Choose the best position to install.
- * Please power off before installation.
- * Keep at a distance of more than 30cm with AC power to avoid interference.
- * Keep away from the water, magnetic field and chemicals.



How to install the outdoor doorbell

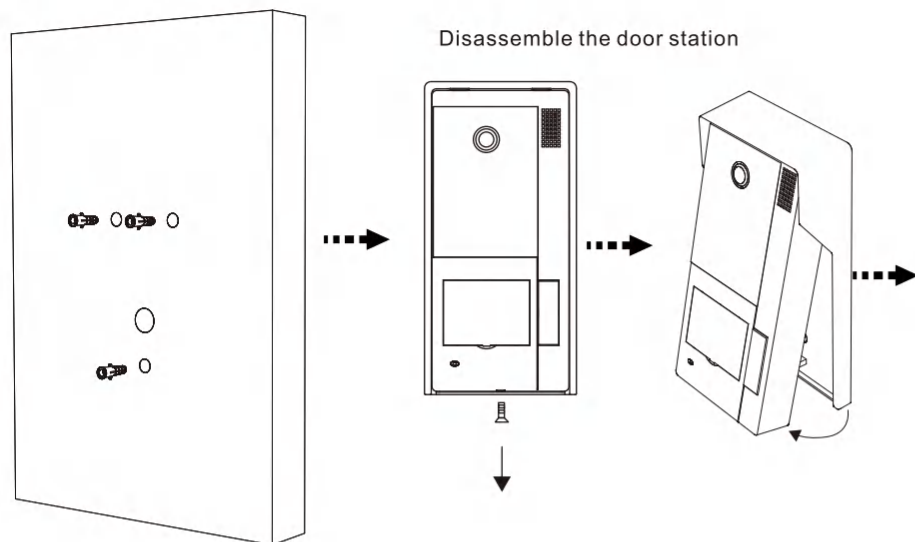


- * Do not expose the outdoor camera to bright light or sun.
- * Do not install the outdoor camera in the environment, e.g. direct sunlight, high temperature, high humidity, full of dust and corrosive chemicals.
- * Select the most suitable position where the camera is at user's eye level.

- * Avoid installing the device near intense radiation, e.g. AC motor and elevator.
- * Maintenance must be carried out by a qualified technician.
- * Avoid strong shocks and collisions, otherwise the exact internal components may be damaged.
- * Please turn off the power supply before installation.
- * Please maintain a distance of more than 30 cm from the AC power source to avoid external interference.
- * Keep it away from water and magnetic field.

Install doorbell

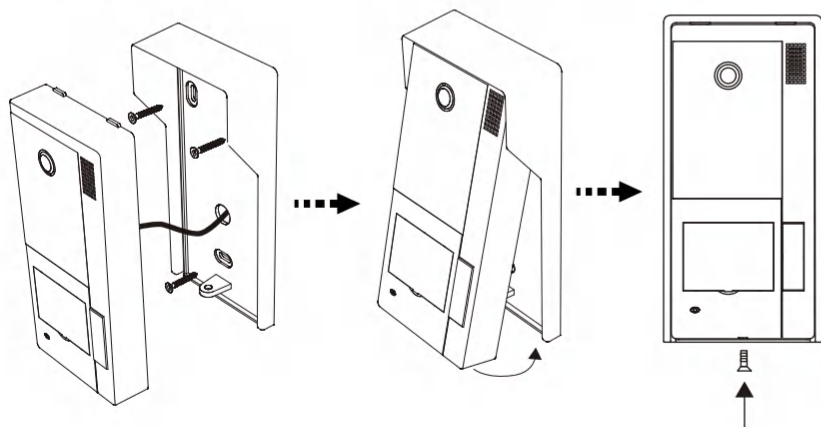
Drill a hole in the wall and put the rubber plug.



Install rain cover to the wall, connect cable to the door station

Attach door station to the rain cover

Fix door station with screw



RFID card operation settings

We have created the master card of adding and deleting to quickly enter the setting programme.

Master Add card marked with “Add”

Master Delete card marked with “Del”

Note:

RFID cards included in the package are programmed already, no need any further configuration, just swipe the RFID cards to open the door.

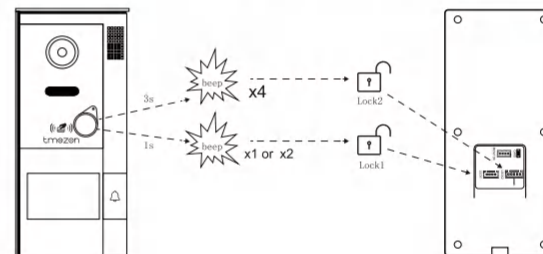
You should pair the RFID cards if the RFID cards is dysfunctional or new RFID cards are ordered separately.

RFID card operation

This door opener designs with two locks(LOCK1/LOCK2) and the unlock card can open them with different operation.

In standby mode, swipe the unlock card towards the induction area of the door opener for about one second, you will hear one or two “beep” sound , the lock connected to Lock1 port will be opened.

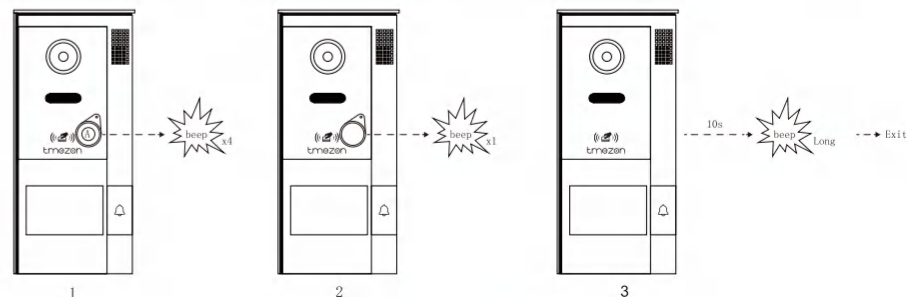
Swipe the unlock card to the induction area of the door opener for about 3 seconds, you will hear four “beep” sound, the lock connected to Lock2 port will be opened.



How to use master card to add or delete the new unlock card ?

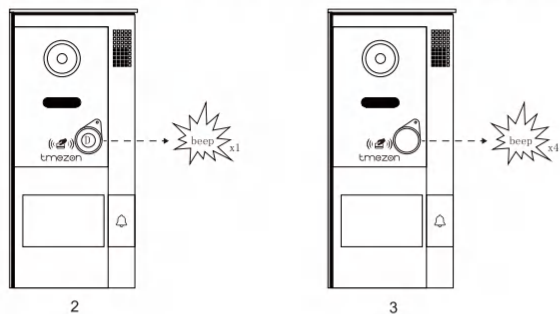
Add the new unlock card

- 1) Swipe master card of ADD to enter setting mode, you will hear four “beep” sound
- 2) Swipe the new card for adding one by one, you will hear one “beep” sound for each card
- 3) Wait for 10 seconds you will hear one long “beep” sound to exit the adding mode



Delete the cards

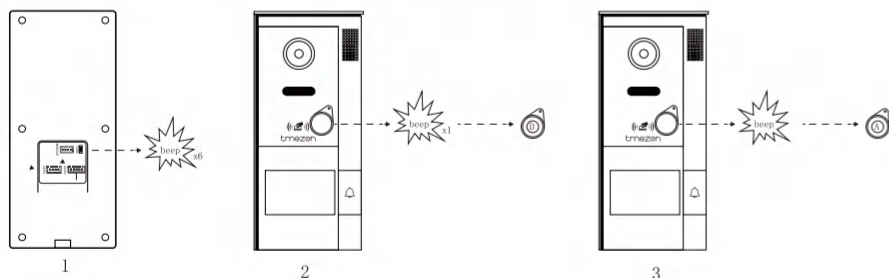
- 1) Please note this operation will delete all the cards
- 2) Swipe master card of Delete to enter setting mode, you will hear one "beep" sound
- 3) Swipe any of the added unlock cards and you will hear four "beep" sound, at this time all previously added unlock cards will be erased. The master Add/Delete still retains.
- 4) If you want to re-add a card, just follow the Add card procedure again.



Reset the master card and unlock card

If your master card is lost, broken, or you want to change new master card, you can reset and re-created it.

- 1) Press the SET button on the back of outdoor station, all the cards will be erased. You will hear six "beep" sound, the outdoor station enter the setting mode.
- 2) Swipe the first unlock card towards the induction area of the door opener, you will hear one "beep" sound, this first card will be set as Master Delete card.
- 3) Swipe the second card you will hear one long "beep" sound, it will be set as Master ADD card.

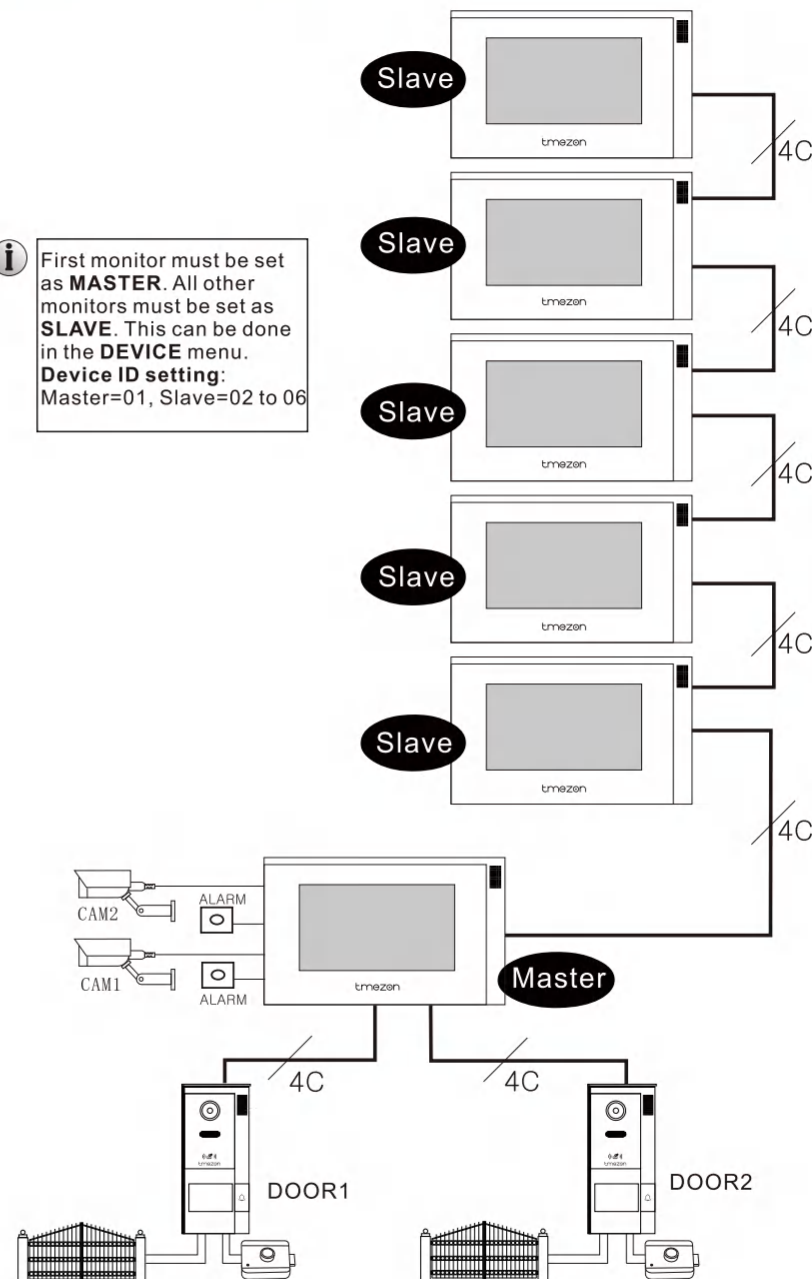


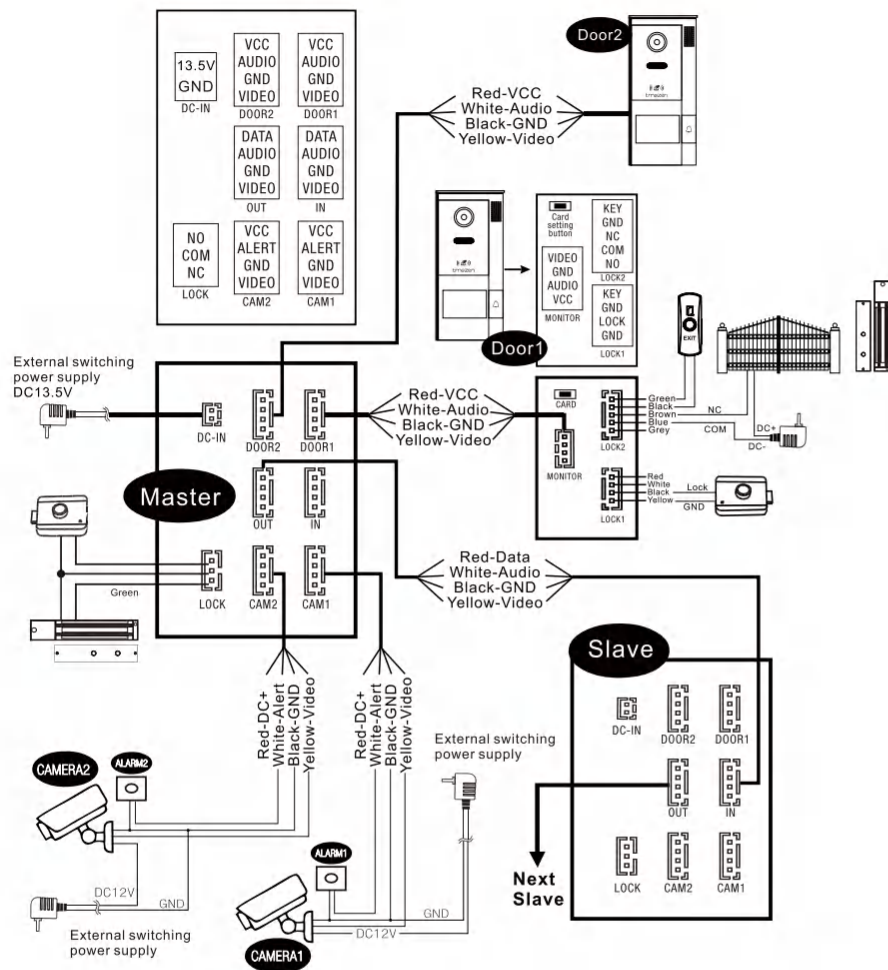
Other notes:

- 1) If you press the SET button and don't operate it for 10 seconds, it will exit automatically and won't affect the last operation.
- 2) The maximum number of add cards is 102, one for master ADD card and one for master Delete card, the remaining 100 for unlock card.

System Connection Diagram

First monitor must be set as MASTER. All other monitors must be set as SLAVE. This can be done in the DEVICE menu.
Device ID setting:
 Master=01, Slave=02 to 06





Note on doorlock's connection

The electric locks are usually divided into NC lock and NO lock, their wiring is different.

Note:

1. The doorbell can support door locks within 30V.
2. Door lock's power supply depends on its door lock, if the door lock is 12V, the corresponding power supply is 12V, etc.
3. Make sure the input voltage from the monitor to the outdoor doorbell must reach 11V when unlocking.

Standby mode

The visitor presses the Call button on Door Station 1 or 2

A 30s of continuous Ding Dong tone is heard inside and outside

The visitor's image automatically displayed on the screen

Press the Talk button on indoor monitor

Stop ringing

Start conversation with Door Station

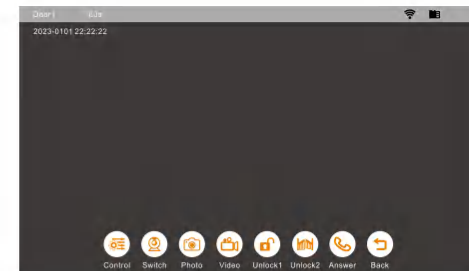
The conversation duration is 120s at a time

Press the Unlock button on indoor monitor

Unlock the door of outdoor station

Press the hang up button on indoor monitor

End



NOTE:

If the call buttons of both Door Stations are pressed about the same time, preference would be given to the Door Station whose call button was pressed first. Please be aware there is no indication at the second Door Station. After the indoor monitor returns to Standby Mode, it can accept calls from the second Door Station.

NOTE:

If no one at home or no one answer, outdoor unit will back to standby mode after 60s.

The Monitor will stay active for 20 seconds for the viewer to confirm that the visitor has entered the door.

The monitor with a MicroSD card installed and Record function active: Recording will start from the beginning of a call, and can be manually stopped by pressing the Button.

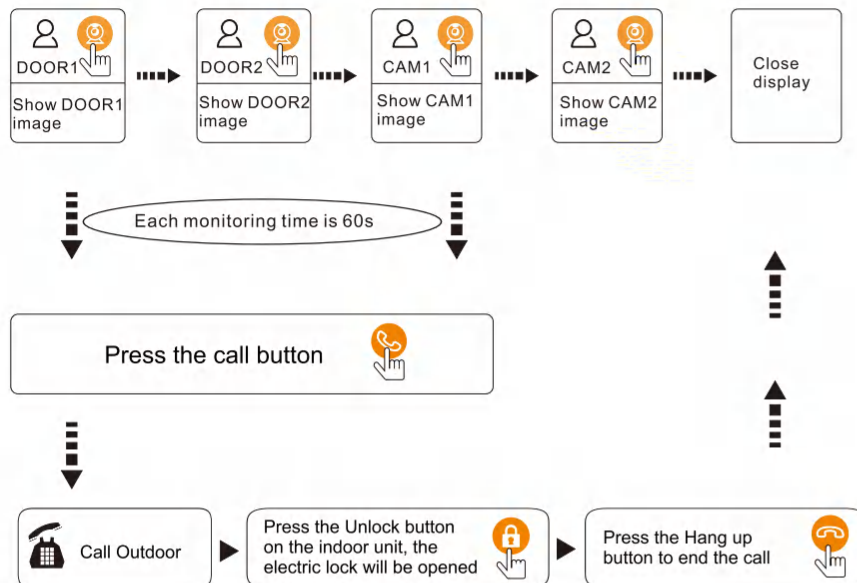
The monitor with a Micro SD card installed and snapshot function active: A snapshot will be taken at the start of the call. The user can also press the button to take another snapshot manually.

In Monitoring mode, the monitor can listen to the door station. Press the button to begin a conversation. Press the button to unlock the door.

Monitoring

By default, Door1, Door2, CAM1 and CAM2 can be monitored. To disable monitoring of Door2, set Door2 Status to OFF in the Mode menu. To disable monitoring of CAM1 and/or CAM2, set their corresponding CAM1 and CAM2 switch to OFF in the Alarm menu.

Standby mode



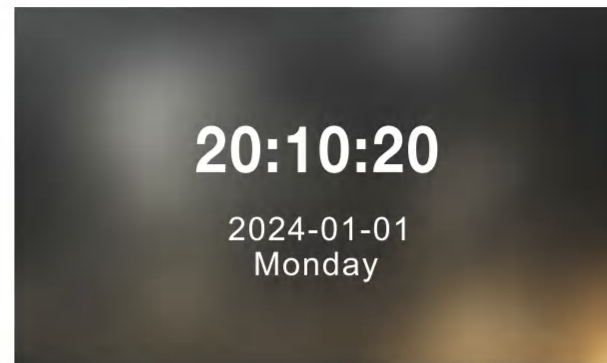
NOTE:

1. When with 1 door station only, can press monitor button again to end monitoring, and can press hang up button to end monitoring. (DOOR2, CAM1, CAM2 must be OFF)
2. If use 2 or more indoor monitors, can switch monitor mode on other extensions by set the device ID, the same image will show difference slave extensions.
3. When visitor press door station call button, system will turn off monitor mode and switch to show door station calling image.
4. When record mode is video record, press "Video" button to start video recording, press record button again to stop recording.
5. Insert SD card and set it as snap mode, press "Photo" button to snap a picture, and snap more pictures.

Monitor Introductions

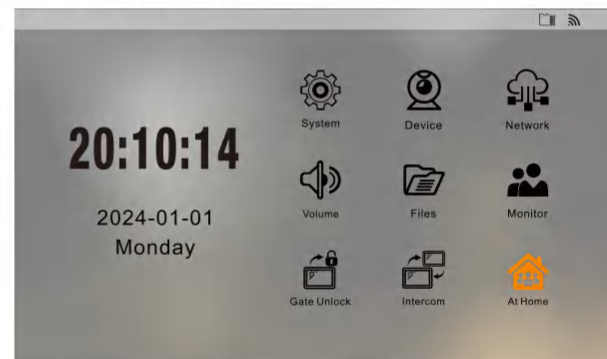
Standby mode

Display day/month/year/week/hour/minute/second.
Clock/date display on standby mode within 60 second,
after disappear enter black screen mode protect LCD.



Main menu

When in standby mode, touch the screen to enter the main menu.
While in the main menu as below.



The Monitor will automatically return to Standby mode after 60sec of user inactivity.

Working mode

There are 3 working modes for optional.



At Home



Leave Home



Dormant

[At home]: When the user is at home, the monitor can be set to "at home" mode. If a visitor calls, both the outdoor bell and the indoor monitor will ring.

[Leave home]: When the user is leaving home, the record mode of the both outdoor units must be set to "video". An SD card needs to be inserted to record the video.

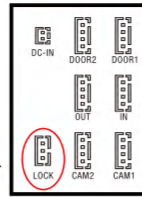
[Dormant]: This is do not disturb mode. If the monitor is set to "Dormant", when a visitor calls, both the outdoor bell and the monitor will remain silent. The red light on the monitor front panel will light up.

Gate unlock



Gate Unlock

Monitor back interface



This icon controls the door lock connected to the monitor (not the lock connected to the door station). Supports both NO/NC lock modes.

Call and monitoring interface



Adjusting Speaker/microphone volume, brightness, contrast & saturation

Switching devices door station 1,2 cameras 1,2

Screenshot

Video record

Open the lock connected to Door Lock port of the doorbell

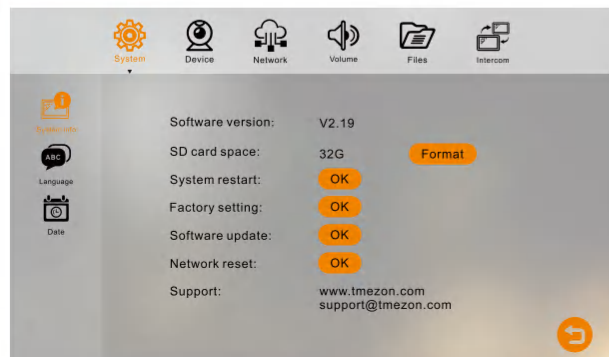
Answer call

Open the lock connected to Gate Lock port of the doorbell

System menu

System information

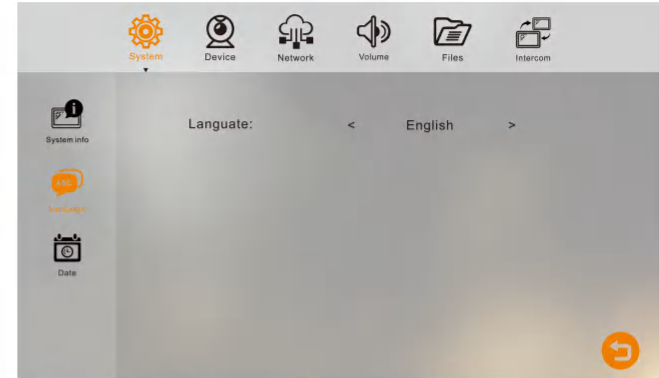
Select "System" icon to enter the menu. This screen shows the software version and micro SD card free space. It includes options to Restart/Reset/Upgrade the Monitor, also can format the micro SD card.



Note: Supports Micro SD cards with write speeds over 10MB/s and memory size up to 128G, recommended the Class 10 SD card.

Language

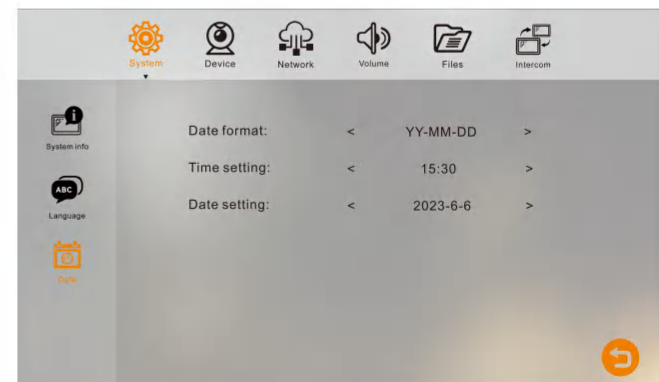
The system language can be changed. In this menu, press the arrow icons on both sides will change the language. Then press Return button to return to previous menu.



Date & Time

The Time settings adjusts the system date and time and what will be displayed in Standby mode.

1. Set the display format of the date in "Date Format". There are Once completed, press to return to the System menu.
2. The Time is displayed in 24-hour format only. After the APP connection is successful, the local time will be automatically synchronized.



Device menu

Indoor monitor

In the Device menu, you can set parameters for the monitor, doorbell 1 and 2, camera 1 and 2.



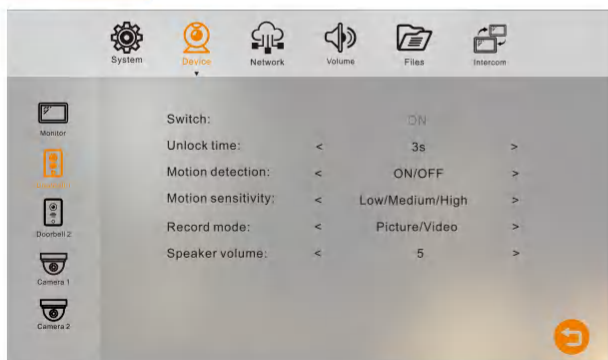
When there are multiple monitors in your video intercom system (one system supports up to 6 monitors), it can be defined by modifying the device ID. When the Device ID is 1, means that this is the master monitor, and when set the device ID is 2-6, means they are slave monitors.

The monitor supports connecting door locks in NO/NC formats, which can be opened by pressing shortcut keys on the main page, also the unlocking delay time can be set.

In this menu, you can set the duration for entering standby mode, open and modify the format of standby mode. The standby mode has clock and digital photo frame for optional.

The storage location can be selected as memory or SD card.

Outdoor station

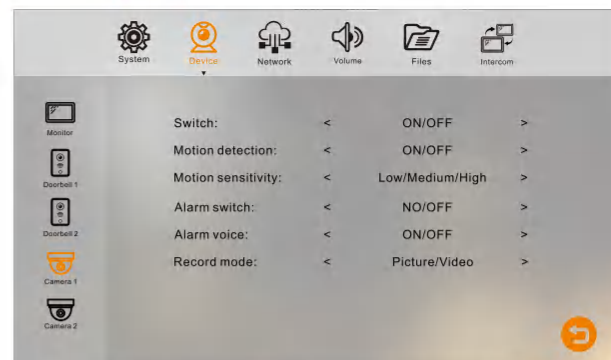


In one system, it supports connecting 2 outdoor station, Doorbell 1 and Doorbell 2. Doorbell 1 switch can't be changed. User can enable or disable the preview of doorbell 2. The unlocking time of the door lock connected to the doorbell opened can be set from 1 second to 10 seconds.

Enable or disable motion detection of the doorbell or cctv camera. and set the motion detection sensitivity as Low/Medium/High.

The recording format can be selected as image or video.

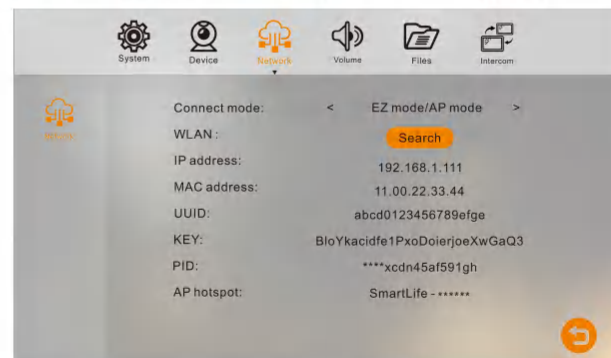
CCTV Camera



One system supports the connected 2 cameras and 2 alerts. When connecting the alerts, please pay attention to the format of the alerts, NO or NC.

Network menu

Before connecting to the network, please download Smart Life or Tuya Smart application from APP Store or Google Play Store. Then register an app account.



Note:

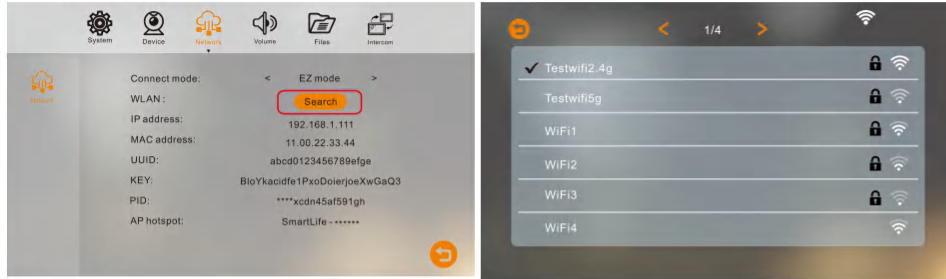
- 1). Router Band--This IP indoor monitor will only connect to the 2.4GHZ band. If you have a dual-band router, you must create unique SSID for the 2.4GHZ and 5GHZ bands. Prior to initiating the syncing process, make sure your device is connect to the 2.4GHZ SSID.
- 2). Router b/g/n --This IP indoor monitor works on 802(b/g/n) network.
- 3). Bring the monitor and the WIFI router within 49 feet(about 15 meters).
- 4). Please check if the WiFi router has the DHCP function enabled.
- 5). Check if the WiFi password is correct, no special characters. Numbers and letters are recommended.
- 6). Make sure the WiFi router and your smart-phone are both connected to the Internet.

Add device to the app

A. Add device by EZ Mode.

Step 1. Make the monitor into EZ mode. When switch the connect mode, the monitor will reboot.

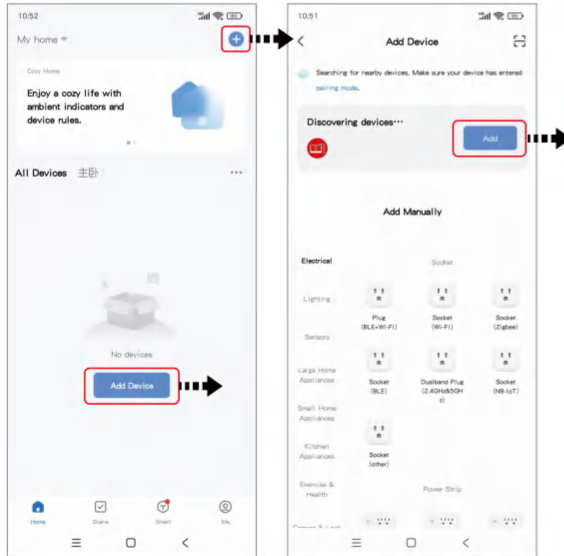
Step 2. Press the "Search" button to enter the WIFI connection page. Will search for WIFI automatically, click on the WIFI name and enter the password input page to complete the connection.



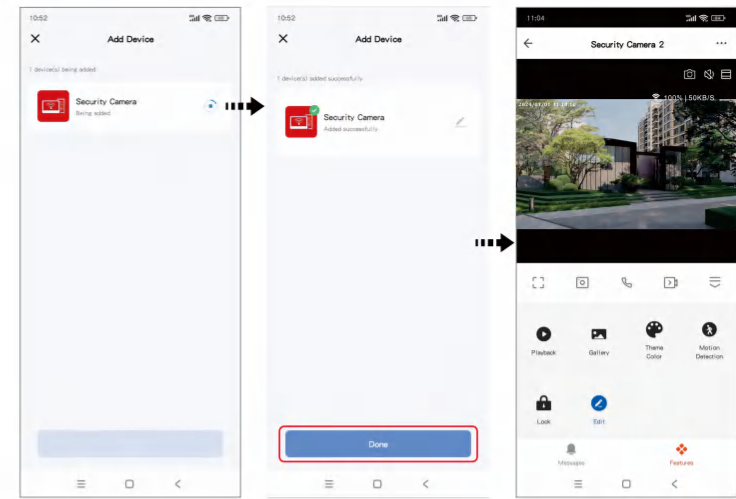
Step 3. Connect your smart-phone to the Wi-Fi router which you want the IP indoor monitor to be connected to. (Only supports 2.4Ghz Wi-Fi, 5G Wi-Fi is not supported)

Step 4. Login the Tuya Smart or Smart Life app, add device.

- Click "Add Device" or "+";
- The APP will automatically search for devices;
- Select the device found in the search list and click "Add";
- The device will automatically add;
- Click the "Done" button to complete the device addition.



Scan QR code to get more tutorial video



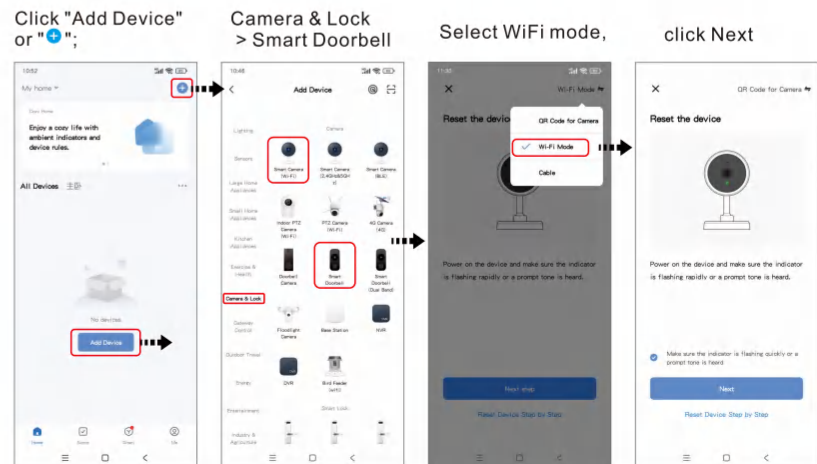
B. Add a device by AP mode.

Step 1. Make the monitor into AP mode.

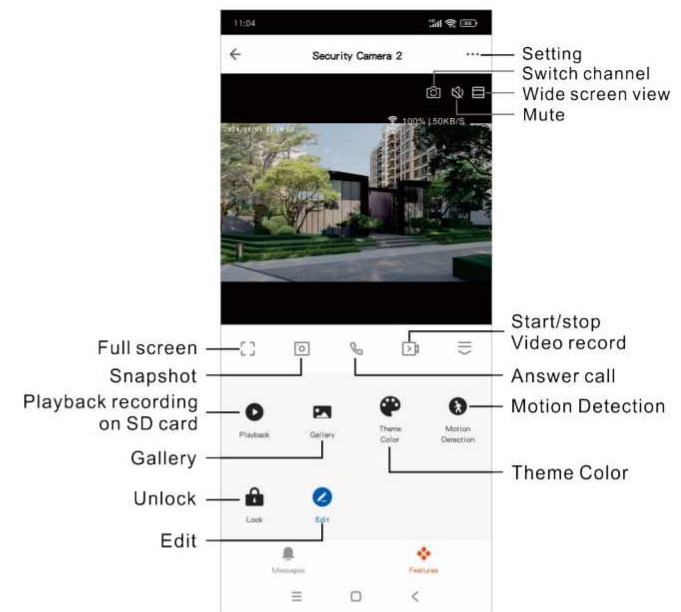
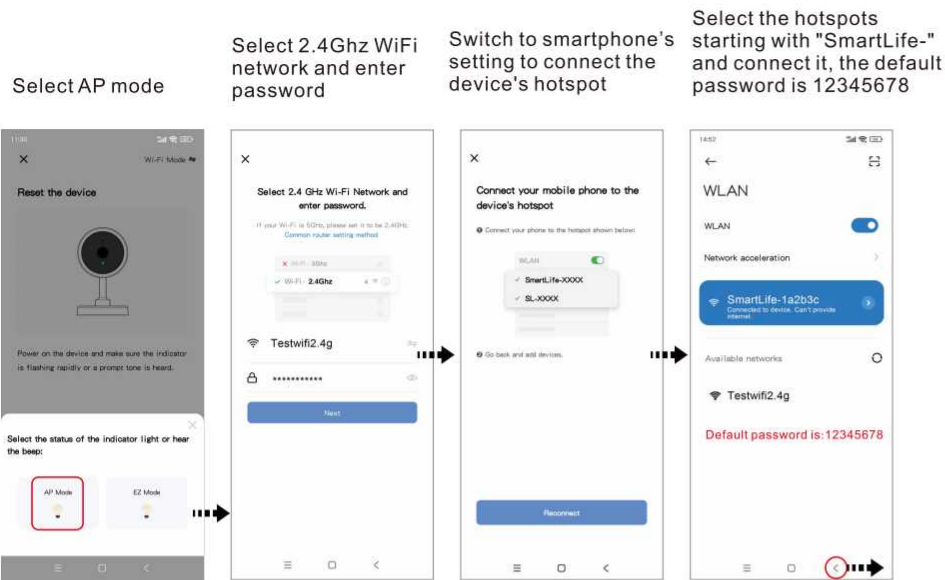


Step 2. Connect your smart-phone to the Wi-Fi router which you want the IP indoor monitor to be connected to. (Only supports 2.4Ghz Wi-Fi, 5G Wi-Fi is not supported)

Step 3. Login the Tuya Smart or Smart Life app, add devices.



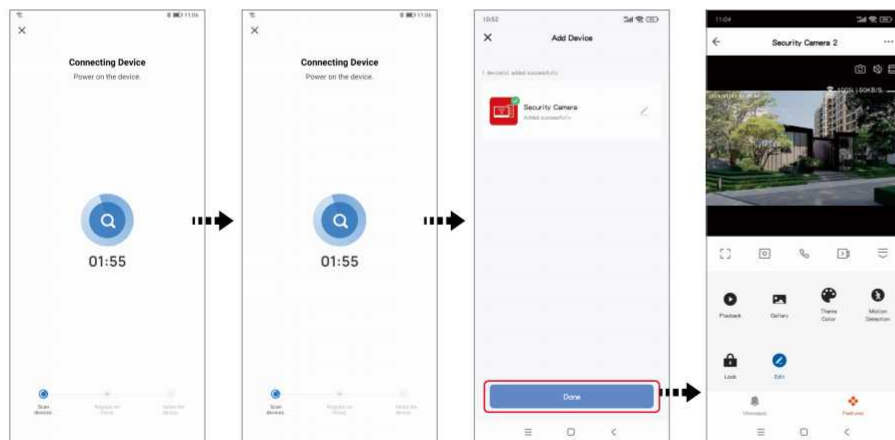
The icons on live view



Return to app to add the device

Wait for connection

Added successfully

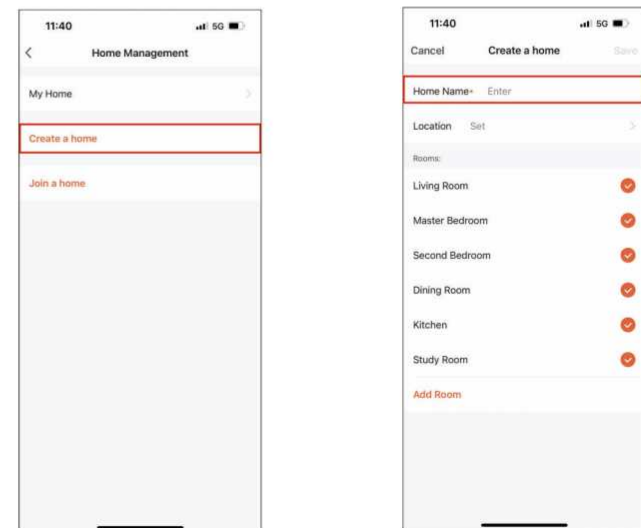


Share device via Home Management

Support up to 10 mobile phones to connect online at the same time.

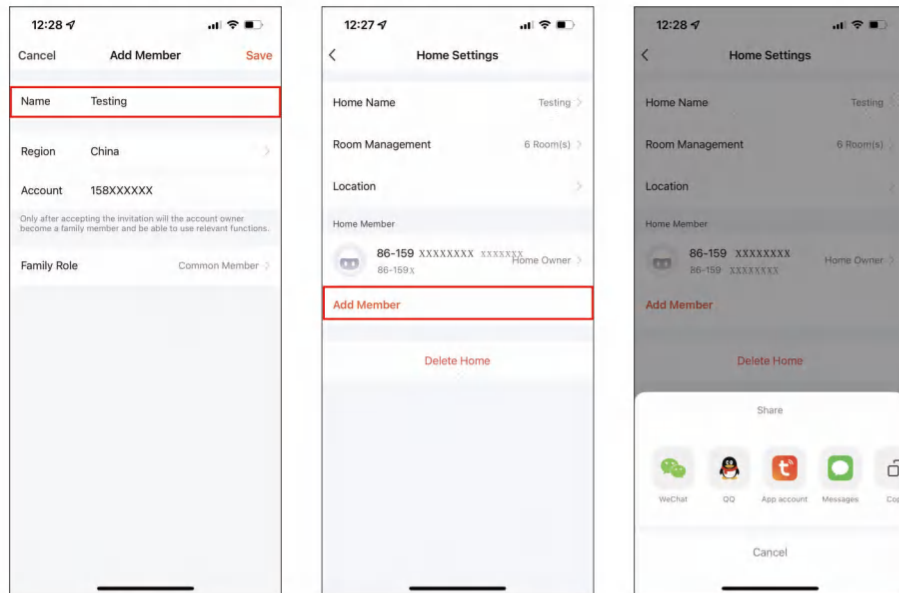
Note: The shared accounts are allowed to have unlock functions.

Step 1: Create a home (Setting a Home Name)



Step 2: Add member(Enter member's TUYA account)

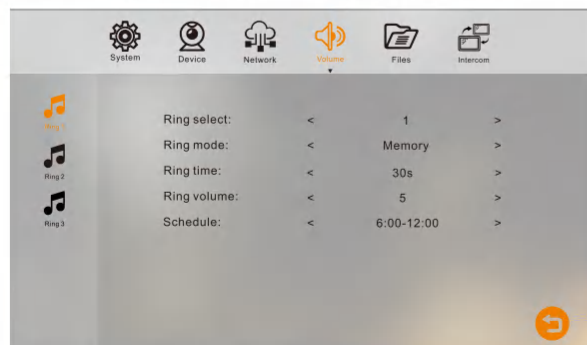
Step 3: Choose the home and Add Device.



On new member's account, select the suitable home to operate the device

Volume menu

On the volume setting menu, user can set Ring1, Ring2 and Ring3 three types of Door1/Door2. Each ring type can set the ring position, ring time period, ring time, ring volume and ring schedule.



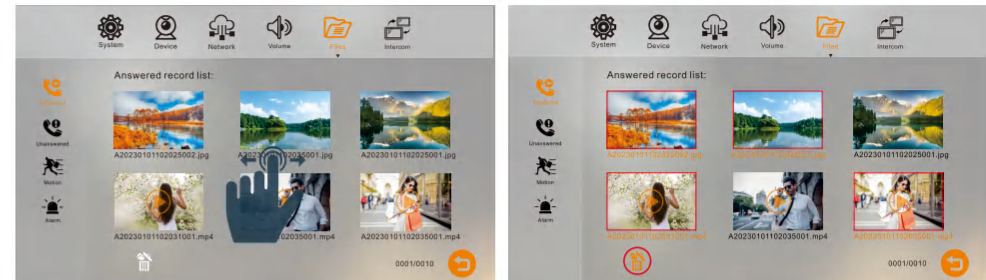
Note:

There are 10 default ringtones. When using the ringtone from the SD card, please copy the music file to the SD card first. It is recommended to use MP3 format music.

Files menu

In this menu, you can view recorded files, including answered, unanswered, motion detection, and alarm files.

The recorded files include images and videos. The image files are in JPG format and the video files are in MP4 format. Swipe the screen left or right to flip pages.

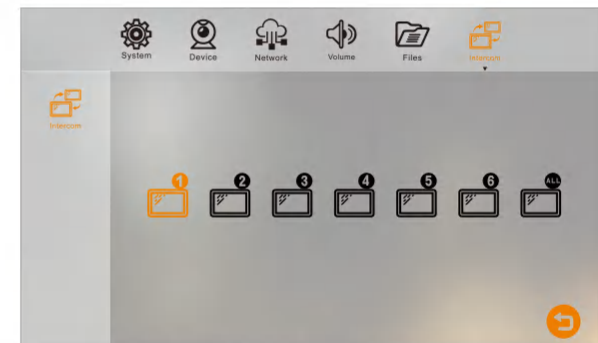


File delete:

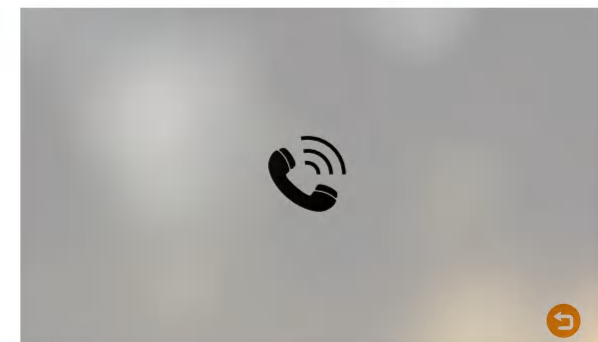
Click the delete button, the button will become to orange, then select the files that needs to be deleted, and press the button for delete.

Intercom menu

This function is for communication between indoor monitors. A monitor communicates with one or more other monitors.



After press the monitor what you need to make a call, the following call interface will appear. Press the "Back" button to hang up the call.



FCC STATEMENT :

This device complies with Part 15 of the FCC Rules. Operation is subject to the following two conditions:

- (1) This device may not cause harmful interference, and
- (2) This device must accept any interference received, including interference that may cause undesired operation.

Warning: Changes or modifications not expressly approved by the party responsible for compliance could void the user's authority to operate the equipment.

NOTE: This equipment has been tested and found to comply with the limits for a Class B digital device, pursuant to Part 15 of the FCC Rules. These limits are designed to provide reasonable protection against harmful interference in a residential installation. This equipment generates uses and can radiate radio frequency energy and, if not installed and used in accordance with the instructions, may cause harmful interference to radio communications. However, there is no guarantee that interference will not occur in a particular installation. If this equipment does cause harmful interference to radio or television reception, which can be determined by turning the equipment off and on, the user is encouraged to try to correct the interference by one or more of the following measures:

- Reorient or relocate the receiving antenna.

- Increase the separation between the equipment and receiver.

- Connect the equipment into an outlet on a circuit different from that to which the receiver is connected.

- Consult the dealer or an experienced radio/TV technician for help.

FCC Radiation Exposure Statement:

This equipment complies with FCC radiation exposure limits set forth for an uncontrolled environment. This equipment should be installed and operated with minimum distance 20cm between the radiator & your body.