

Wireless CarPlay Adapter

User Manuals

Contents

Important instructions-----	3
Pay More Attention-----	3
Specifications-----	4
What's In The Box-----	5
Check Compatible Car Models-----	5
Setup Step-----	6
FAQ& Troubleshooting-----	8
Online Firmware Update-----	10

Important Instructions

Please read the manual carefully before use and we recommend keeping this manual for future reference.

Notice

1. This Wireless CarPlay Adapter only works with iPhones. It's not compatible with other smartphones or tablets.
2. This Adapter is just for cars that already have Wired CarPlay. It won't work if your car doesn't have CarPlay.
3. Only iPhone 6 and newer models can use this Adapter. Your iPhone needs to have iOS 10 or later.
4. If your car has custom features like a front camera monitor or a 360 surround view, the Adapter should connect, but you might get a black screen. This doesn't mean there's an issue with the product. If this happens, please reach out to our customer service team, and we'll help you find a solution.
5. When connecting the Wireless CarPlay Adapter, make sure your iPhone's Bluetooth and Wi-Fi are only connected to the Wireless CarPlay Adapter "MarsByte-xxxx" (xxxx will be your product's serial number). Ignore any other signals to avoid interference.
6. The Bluetooth on "MarsByte-xxxx" is only for pairing and auto-connecting CarPlay. Once paired, the adapter will use Wi-Fi for data transfer, so you can turn off Bluetooth if you want. Just remember, next time you use it, you'll need to turn Bluetooth back on so the Adapter can pair and connect automatically.

7. When using the Wireless CarPlay feature, your iPhone's Wi-Fi will be used to receive data from the Wireless CarPlay Adapter. During this time, your phone won't be able to use other Wi-Fi signals. If your phone is connected to another Wi-Fi network, you'll need to manually disconnect it to keep the Wireless CarPlay Adapter working properly.

8. After pairing, the Wireless CarPlay Adapter will disconnect from your phone's Bluetooth. If your phone connects to other Bluetooth devices during this time, it might cause issues with CarPlay's microphone or sound playback. If this happens, you may need to manually disconnect other Bluetooth devices or turn off Bluetooth to fix the problem.

Specifications

Wi-Fi Signal Name:

"MarsByte-xxxx" (xxxx is the product serial number, which will match the actual product you receive)

Bluetooth Signal Name:

"MarsByte-xxxx" (xxxx is the product serial number, which will match the actual product you receive)

Input Interface:

USB-A male / comes with USB-A to USB-C Adapter

Input Voltage: 5V

Operating Power: 0.5W

Standby Power: 0.25W

Operating Current: 1A Max

Wi-Fi and Bluetooth Modules: Bluetooth (EDR) 5.2, Wi-Fi 5.8、2.4G WIFI

Main Control Chip: ARM Cortex-A7S

Supported Bluetooth Versions:

Bluetooth 2.1+EDR/3.0/4.X/5

Wi-Fi Standards:

WEP/WPA2/WPA3-SAE PERSONAL MFP

Operating Temperature: -4°F to 140°F

Compatible iOS Version: iOS 10+

Supported Phones: iPhone 6 and newer

Compatible Car Models: 800+ models with factory wired CarPlay

OTG Data Transfer: Supported

What's in the Box

1 x Wireless Carplay Adapter

1 x USB-A to USB-C Adapter

1 x User Manual

Method 1: Plug your iPhone into the car's main USB port using the original cable. If your car has Apple CarPlay, the app will pop up on the screen, asking for permission on your phone.

Method 2: Look for the CarPlay icon in the menu settings on your car's screen. If you see it, your car has built-in wired Apple CarPlay.

Method 3: Contact your car dealership for assistance.

Method 4: Scan the QR code below to check if your car model is included.



List of Car Models Compatible with Wireless CarPlay Adapters

Setup Step

1. Start your car and wait for the car display system to finish loading. Keep your iPhone's Bluetooth and Wi-Fi functions enabled, and don't connect to any other signals.



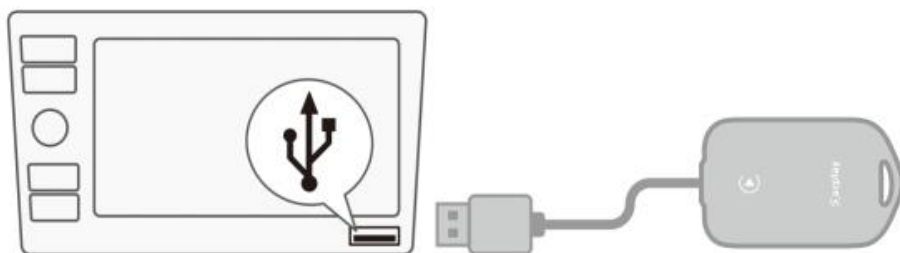
Bluetooth



Wi-Fi



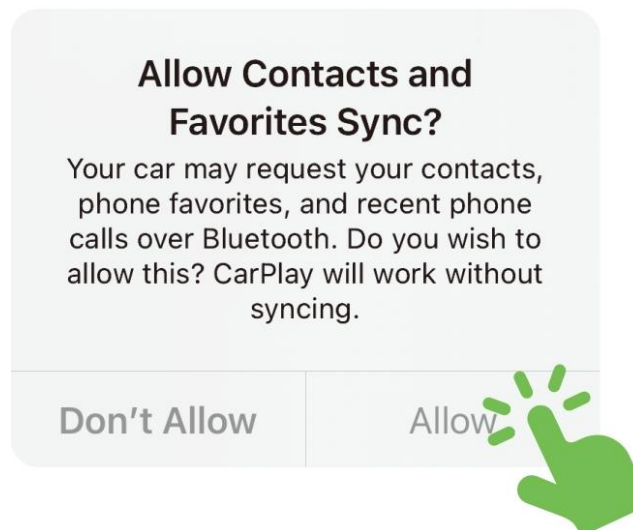
2. Connect the Wireless CarPlay Adapter to the USB port in your car with Apple CarPlay functionality. If your car has multiple ports, make sure to insert the Wireless CarPlay Adapter into the USB port designated for wired CarPlay (refer to the diagram for port identification).



3. After inserting the Wireless CarPlay Adapter into the USB port of the car's display, you'll see the following information on the car's display screen, indicating full compatibility between the Wireless CarPlay Adapter and the car's Wired CarPlay (note that some cars may require clicking the CarPlay icon on the screen to initiate).



4. Open the Bluetooth settings on your phone, find the Bluetooth signal for the Wireless CarPlay Adapter "MarsByte-xxxx," and pair it. Your phone will prompt a "Bluetooth pairing request." Click "Allow" on all prompts, and wait a few seconds for the connection to establish.



5. Your iPhone's Wi-Fi will automatically connect to the Wi-Fi signal of the Wireless CarPlay Adapter "MarsByte-xxxx." Make sure your iPhone's Wi-Fi is not connected to any other Wi-Fi signals.

6. When the car's display screen switches to the CarPlay control interface, it indicates a successful connection.

7. After the initial pairing, when you use the Wireless CarPlay Adapter again, it will automatically connect your iPhone to the car's display screen (make sure your phone's Wi-Fi and Bluetooth are enabled). Some cars may require clicking the CarPlay icon on the car's display screen to switch to the CarPlay interface (no need for re-pairing, automatic connection).

FAQs & Troubleshooting

Q: Does the iPhone need to connect to the Wi-Fi signal of the wireless CarPlay Adapter?

A: **Nope, it doesn't.** Once the Adapter pairs with the iPhone via Bluetooth, the Wi-Fi will connect automatically without any extra steps.

Solution: Just make sure your iPhone's Bluetooth and Wi-Fi are turned on and not in use when pairing with the Adapter.

Q: After turning off the car, the indicator light on the Wireless CarPlay Adapter doesn't immediately turn off.

A: The indicator light on the Wireless CarPlay Adapter takes a moment to go out; it doesn't happen right away. But don't worry, it uses very little power and won't harm your car battery.

Solution: You don't need to do anything.

Q: Your iPhone can't find the Bluetooth or Wi-Fi signal of the Wireless CarPlay Adapter?

A: (1.) There might be an issue with the Wi-Fi and Bluetooth modules on your phone.
(2.) The wireless Carplay adapter might have a defect.

Solution: You can try using another iPhone to test it out. If only a specific iPhone can't find the Bluetooth or Wi-Fi signal of the Wireless CarPlay Adapter, try resetting the network and Bluetooth settings on that iPhone, then restart the phone.

If the same problem occurs on other iPhones, then the device likely has a defect. In that case, please let us know, and we'll arrange a refund or replacement for you.

Q: **Audio Input or Output Issues: Call Rejection or Redirect to Voicemail/No Sound Playback/Microphone Not Working/Interrupted or Paused Music Playback/Voice Functionality Abnormalities...**

A: Phone Bluetooth Device Occupied by Other Signals, Incorrect Audio Output Selection.

Solution: (1.) Check if your phone's Bluetooth is connected to other devices. If so, ignore other automatically connected Bluetooth devices or simply turn off Bluetooth.

(2.) During calls, ensure that the "Audio" output option is set to CarPlay.

Note: Bluetooth serves as a pairing function in the operation of the Wireless in-car Adapter. Once pairing is complete, only Wi-Fi is needed to continue working, so it's okay to turn off Bluetooth. However, you'll still need to turn on Bluetooth for the next use so that the CarPlay Wireless Adapter can automatically pair and connect.

Q: **The Adapter keeps disconnecting during use?**

A: iPhone's Wi-Fi connection interrupted or occupied

Solution: (1) The Wireless CarPlay Adapter transmits data through iPhone's Wi-Fi

connection. Disconnections are usually caused by Wi-Fi interference. If iPhone's Wi-Fi signal is occupied by other settings, you need to ignore other Wi-Fi networks.

(2) You can improve this issue by resetting the WLAN network on your iPhone.

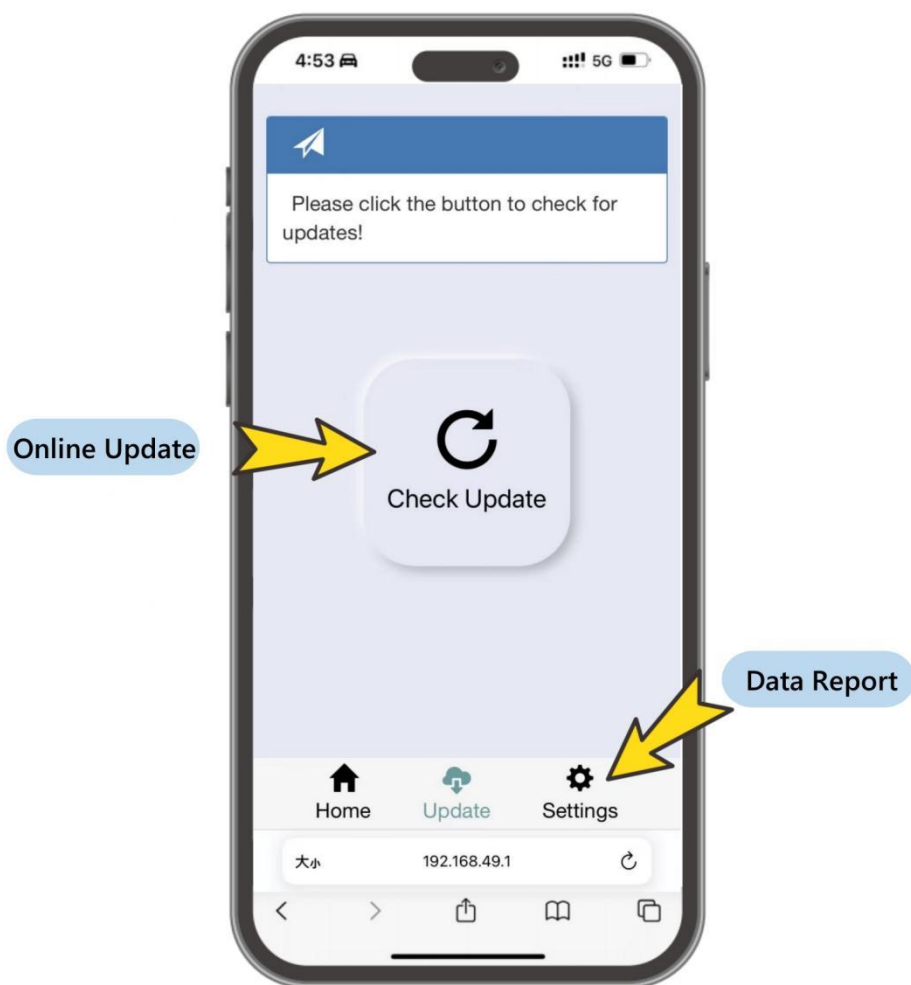
(3) Updating the Adapter can also resolve the problem.

Steps to update the Adapter:

(1) Plug the Wireless CarPlay Adapter into the USB power port (only supported ports).

(2) Connect your phone to "MarsByte-xxxx" Wi-Fi, Password: 12345678.

(3) Enter 192.168.49.1 in the phone's web browser to access the update interface and update the Adapter.



Q: Can the Wireless CarPlay Adapter pair with multiple iPhones?

A: Yes, it can.

Solution: The Wireless CarPlay Adapter can pair with multiple iPhones, but it can only connect to one device at a time. If you want to pair it with a new iPhone, please disconnect the currently used iPhone. Please note that if multiple iPhones have Bluetooth enabled, the Adapter's system will only automatically connect to the last used iPhone.

Q: Adapter not reconnecting automatically?

A: Phone settings conflict / Car settings not enabled.

Solution: (1) For some car models, go to the car's display settings, select the CarPlay icon, and turn on "Auto Connect."

(2) Check your phone settings: Settings > Wi-Fi > tap the info icon (i) next to "MarsByte-xxxx" > enable "Auto-Join."

(3) Other situations:

A. When you get in the car, make sure your phone's Bluetooth and Wi-Fi are on, and that Bluetooth isn't paired with other devices.

B. Clear pairing history, restart your phone, and pair it again.

Q: Audio delay when playing music on your phone?

Solution: (1) To ensure smoothness and quality, Apple CarPlay might cause slight delays in music playback. We've used a dual-module design to significantly boost transmission speed, cutting music playback delay by 50%. There's almost no delay during

navigation and calls.

(2) If the music and lyrics are out of sync, you can fix it by opening the lyrics option in your music app and adjusting the timing.

Q: Adapter paired but the car screen is black?

Solution: (1) In your car's display settings, find devices like TV, DVR, or DVD and turn them off. If they're on, they might be using the CarPlay display channel.

(2) If the screen is still black after turning off other devices, try restarting your phone to fix it.

Q: After connecting the Adapter, the sound appears on the phone but not on CarPlay.
What to do?

Solution: (1) Open your phone and swipe down the status bar. Find the music playback settings, open it, and locate CarPlay. Clicking on CarPlay will switch the audio output to CarPlay.

(2) You can try unplugging and re-plugging the CarPlay Adapter to resolve the issue.



FCC WARNING

This device complies with part 15 of the FCC Rules. Operation is subject to the following two conditions: (1) this device may not cause harmful interference, and (2) this device must accept any interference received, including interference that may cause undesired operation.

Any changes or modifications not expressly approved by the party responsible for compliance could void the user's authority to operate the equipment.

NOTE: This equipment has been tested and found to comply with the limits for a Class B digital device, pursuant to Part 15 of the FCC Rules. These limits are designed to provide reasonable protection against harmful interference in a residential installation. This equipment generates, uses and can radiate radio frequency energy and, if not installed and used in accordance with the instructions, may cause harmful interference to radio communications.

However, there is no guarantee that interference will not occur in a particular installation. If this equipment does cause harmful interference to radio or television reception, which can be determined by turning the equipment off and on, the user is encouraged to try to correct the interference by one or more of the following measures:

- Reorient or relocate the receiving antenna.
- Increase the separation between the equipment and receiver.
- Connect the equipment into an outlet on a circuit different from that to which the receiver is connected.
- Consult the dealer or an experienced radio/TV technician for help.

To maintain compliance with FCC's RF Exposure guidelines, This equipment should be installed and operated with minimum 20cm distance between the radiator and your body: Use only the supplied antenna.