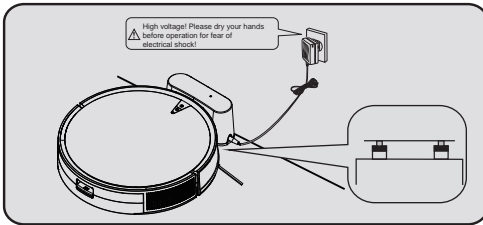




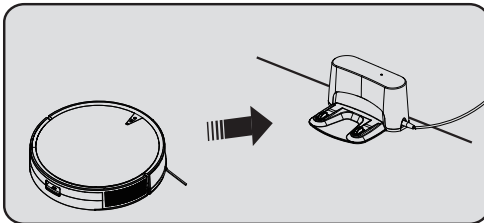
## 4.2 Charging method

### 4.2.1 Manual charging:



1. Use the charging dock for charging:  
Connect the power adapter with the charging dock, and then connect with the power supply; place the vacuum cleaner on the charging dock for charging (The recharging light flashes during charging, and the two lights  and  are in blue when the vacuum cleaner is fully charged.)

### 4.2.2 Automatic charging:



#### Automatic charging:

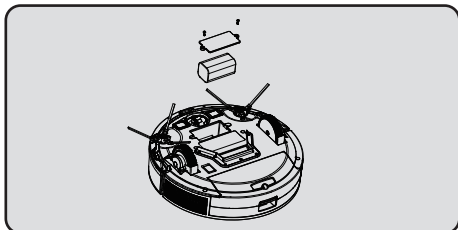
In case of low battery during the operation of the machine, the blue light of the recharge key will flash, and the machine will enter the recharge mode.

## 5. Product Maintenance

 Tip:

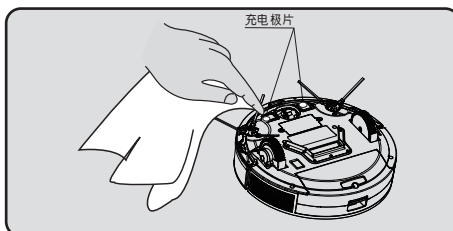
Please clean and maintain the vacuum cleaner regularly according to the use conditions.

### 5.1 Daily storage



When not using the vacuum cleaner for a long time, please fully charge the battery, then remove it and store in a cool dry place, and keep the bottom of the vacuum cleaner dry.

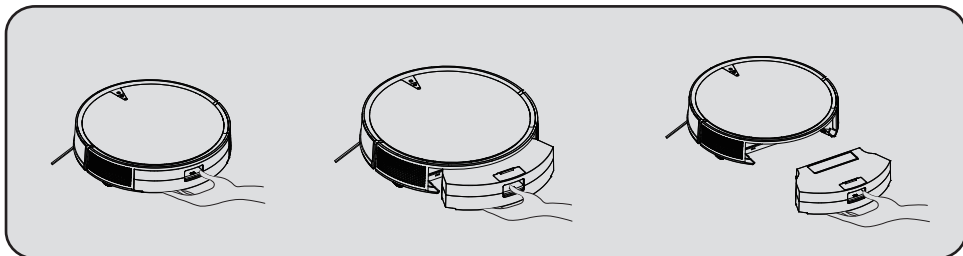
### 5.2 Clean the charging pole pieces



1. Please turn off the power switch or unplug the power cord first.
2. Please use a dry cloth to wipe them once a month.
3. Do not scrub with oil.

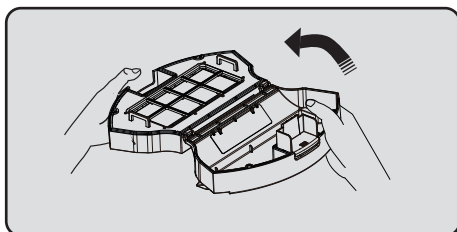
### 5.3 Clean the dust box

#### 5.3.1 Install and remove the dust box

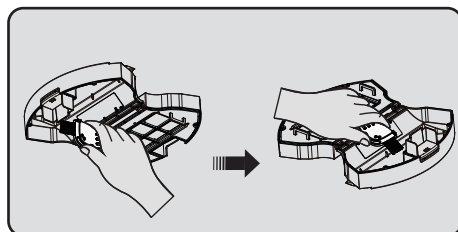


As shown in the above figure, press down the dust box clasp, and pull out the dust box

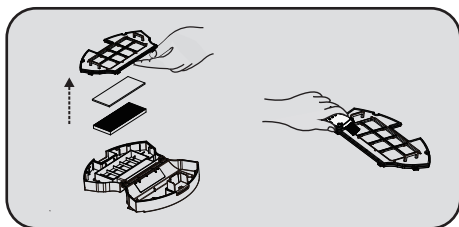
#### 5.3.2 Clean the dust box



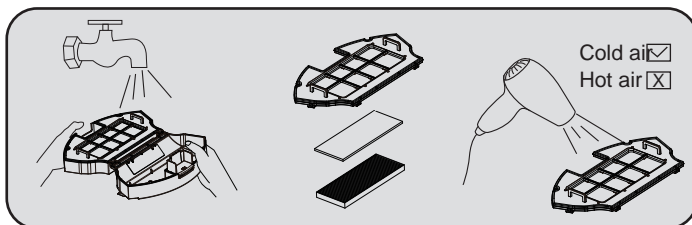
1. Open the dust box cover and pour out the dust. Advice: Clean the dust box every three days at first for the new machine, and clean it once a week subsequently.



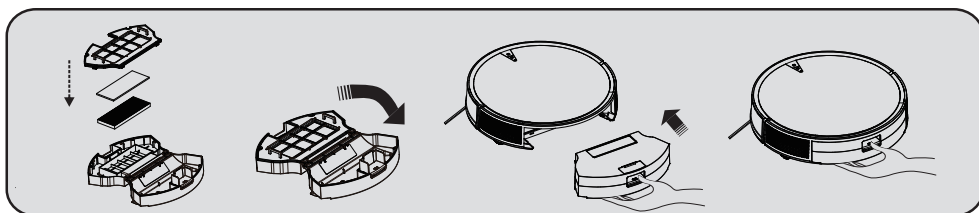
2. As shown above, use a cleaning brush to clean it.



- 3.Remove the filter assembly and use a cleaning brush to clear away the dust on the filter screen.

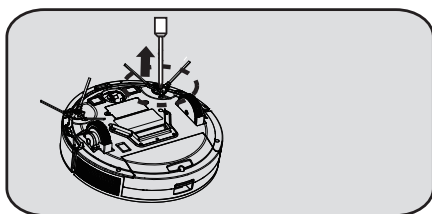


- 4.The inside of the dust box and the filter screen can be flushed under running water. (Note: You need to dry it thoroughly before you can put them back into the vacuum cleaner.)

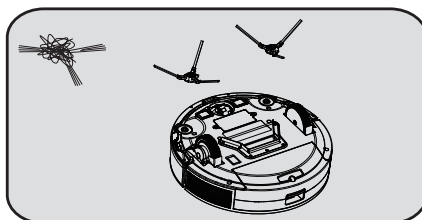


- 5.After cleaning, reinstall the filter screen, close the dust box cover, and finally put the dust box into the vacuum cleaner.

## 5.4 Clean the side brush

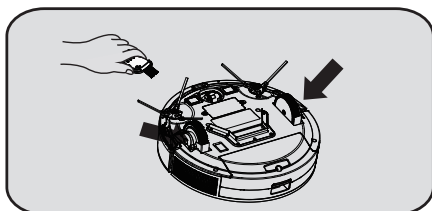


1. Use a screwdriver to remove the screws from the side brush.



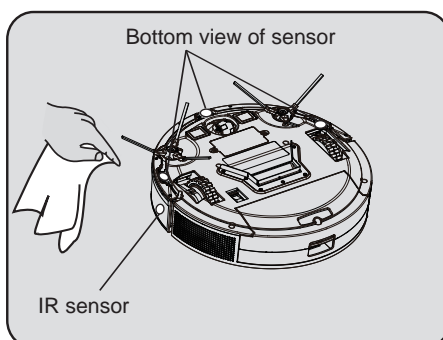
2. Remove the side brush and clear away the hair and other rubbish on the side brush. Then clear away the entanglements in the slot of the side brush.

## 5.5 Clean the wheels



Clean the front, left and right wheels regularly with a cleaning brush. (Note: The wheel shaft may be entangled by hair, cloth strips, etc., so please clean it in time.)

## 5.6 Clean the sensor




It is recommended that every time after the cleaning work is completed, a dry cotton cloth should be used to carefully wipe the light-transmitting plate of the sensor to prevent dust accumulation on it, which will affect the performance of the product.

## 6. Troubleshooting

Flashing Mode of Fault Indicator Lights	Fault	Cause	Solution
The red light flashes 2 times	Left wheel fault	The left wheel doesn't rotate, or the left wheel is overloaded.	Please check whether the left wheel of the machine is entangled.
The red light flashes 3 times	Right wheel fault	The right wheel doesn't rotate, or the left wheel is overloaded.	Please check whether the right wheel of the machine is entangled.
The red light flashes 4 times	Suspension fault	The machine is off the ground.	Please check whether the machine is lifted or suspended.
The red light flashes 5 times	Seizure fault	The machine is stuck abnormally.	Please check whether the front wheel is entangled or whether the machine is seized.
The red light flashes 6 times	Floor inspection fault	The cliff sensor is dirty or the machine is suspended.	Please check whether the sensing window at the bottom of the machine is blocked, and put the machine back on the floor to avoid suspension.
The red light flashes 7 times	Low battery charge level	The battery charge level is extremely low (not a case of critical recharge voltage).	Please let the machine return to the charging dock for recharging.
The red light flashes 8 times	Front bumper fault	The left and right front shell collision switches are not reset.	Please check whether the collision buffer of the machine is normal or is stuck with foreign objects.
The red light flashes 10 times	Side brush fault	The side brush is stuck.	Please check whether the side brush of the machine is entangled with foreign objects.
The red light flashes 11 times	Wall inspection fault	The machine cannot detect obstacles.	Please remove dusts on the machine.
The red light flashes 12 times	Fan fault	The side brush is stuck or entangled.	Please check whether there are foreign objects on the machine.
The red light flashes 14 times	Charging fault	There is a problem with charging.	Please check whether the temperature is too high or whether the original adapter is used, then clean the charging contacts and try again.

Flashing Mode of Fault Indicator Lights	Fault	Cause	Solution
The red light flashes 15 times	Water tank fault	The water tank falls off during mopping.	Please install the water tank reliably.
The red light flashes 16 times	Virtual wall fault (only in case of a designated machine)		
The red light flashes 17 times	Vibration pump fault	The vibration pump is stuck or entangled with foreign objects.	Please check whether the water tank vibration pump is entangled or has foreign objects.
The red light flashes 18 times	Water pump fault	The water pump is not connected reliably.	Please check whether the water pump is installed in place.
	Water tank water lack fault	Lack of water in the water tank (indicated by three beeps of the buzzer or a voice prompt).	Please check the water tank and add water.

 Tip: If you can't eliminate the corresponding faults with the above methods, please contact our customer service staff in time.

## 7. Technical Parameters

Functional parameters of the host machine		Functional parameters of accessories	
Operating voltage	14.4 V	Power adapter	
Rated power	24 W	Output voltage	19V
Battery	Lithium battery	Output current	600mA
Battery capacity	2500mAh	Charging dock	
Charging time	≤300min	Input voltage	19V
Operating hours	Approx.100 minutes		
Working temperature range	0~45℃		
Operating humidity range	≤ 90%RH		
Noise	≤ 65dB		
Weight	2.6 kg		
Dimensions	Φ325*83mm		

### Tip:

Our company reserves the right to make any technical or design changes to the product due to continuous product improvement needs.。

The right of interpretation belongs to our company.

■ Names and contents of harmful substances in the product

Component Name	Harmful Substances					
	Lead (Pb)	Mercury (Hg)	Cadmium (Cd)	Hexavalent chromium (Cr (VI))	Polybrominated biphenyl (PBB)	Polybrominated diphenyl ethers (PBDE)
Shell component	○	○	○	○	○	○
Internal plastic parts	○	○	○	○	○	○
Metal parts	X	○	○	○	○	○
Electrical components and control components	X	○	X	○	○	○
Dry batteries	X	○	○	○	○	○
Rechargeable batteries	X	○	○	○	○	○
<p>This form is prepared in accordance with the provisions of SJ/T 11364.</p> <p>○: It indicates that the contents of the hazardous substance in all homogeneous materials of this part are below the required limit specified in GB/T 26572.</p> <p>X: It indicates that the content of the hazardous substance in at least one of the homogeneous materials of this part exceeds the required limit specified in GB/T 26572.</p> <p>(All parts marked with "X" in the form are in conformity to the EU RoHS Directive, or cannot be replaced by hazardous substances due to global technological development limits.)</p> <p>(This form indicates that these hazardous substances exist in our company's products, but not all of the products included in the package contain all of the above parts.)</p>						

- ③ The service life of the dry batteries used with the product is 3 years.
- ⑤ The service life of the rechargeable battery used with the product is 5 years.



## Warranty Card II

User name		(II) Settlement form of the warranty provider
Address		
Tel.		
Postal code		
Product model		
Purchase date		
Invoice number		
Warranty period		
<p>Product warranty description:</p> <ol style="list-style-type: none"> <li>From the date of the user's purchase of this product, the warranty period is one year for the host machine, and six months for the adapter, rechargeable batteries and other accessories.</li> <li>After receiving the product repair request, the aftersales service staff will solve the problem within 15 working days.</li> <li>The user can learn about relevant technical problems through the user manual of the product or the after sales service hotline, and get a clear solution. Hotline: 400 - 8760 - 990</li> <li>When a performance failure occurs during the user's normal use, our company promises to provide the above warranty services unless otherwise stipulated by the applicable laws, rules and regulations of the state.</li> <li>During the warranty period, paid maintenance services will be provided under any of the following circumstances:               <ol style="list-style-type: none"> <li>(1) Damage caused by man made factors or irresistible natural phenomena;</li> <li>(2) Failure or damage caused by improper operation of the user;</li> <li>(3) Malfunction or damage due to the user's disassembly or alteration without authorization.</li> </ol> </li> </ol>		



## Warranty Card I

User name		(I) To be kept by the user as warranty certificate, which will not be reissued if lost
Address		
Tel.		
Postal code		
Product model		
Purchase date		
Invoice number		
Warranty period		
Date	Repairman	Maintenance record

# Shanghai Xianju Industrial Co., Ltd.

Address: Room 1607, No. 3.7.20, Lane 388, Baifu Road,  
Fengxian District, Shanghai

## FCC Warning

This device complies with Part 15 of the FCC Rules. Operation is subject to the following two conditions:

(1) This device may not cause harmful interference, and (2) this device must accept any interference received, including interference that may cause undesired operation.

NOTE 1: This equipment has been tested and found to comply with the limits for a Class B digital device, pursuant to part 15 of the FCC Rules. These limits are designed to provide reasonable protection against harmful interference in a residential installation. This equipment generates, uses and can radiate radio frequency energy and, if not installed and used in accordance with the instructions, may cause harmful interference to radio communications. However, there is no guarantee that interference will not occur in a particular installation. If this equipment does cause harmful interference to radio or television reception, which can be determined by turning the equipment off and on, the user is encouraged to try to correct the interference by one or more of the following measures:

- Reorient or relocate the receiving antenna.
- Increase the separation between the equipment and receiver.
- Connect the equipment into an outlet on a circuit different from that to which the receiver is connected.
- Consult the dealer or an experienced radio/TV technician for help.

NOTE 2: Any changes or modifications to this unit not expressly approved by the party responsible for compliance could void the user's authority to operate the equipment.

## RF Exposure Statement

To maintain compliance with FCC'S RF Exposure guidelines, This equipment should be installed and operated with minimum 20cm between the radiator and your body. This device and its antenna(s) must not be co-located or operation in conjunction with any other antenna or transmitter.