

Tachograph

user's Guide

love Car, love life

V25

1. Quick Start Guide

Installing the camera

1. Check if the memory card is in the camera.
2. Attach the suction cup bracket with GPS to the camera.
3. Plug the charging cable into the USB port of the camera, and then plug the adapter into the cigarette lighter socket of your car. Start the car and the camera will turn on automatically.

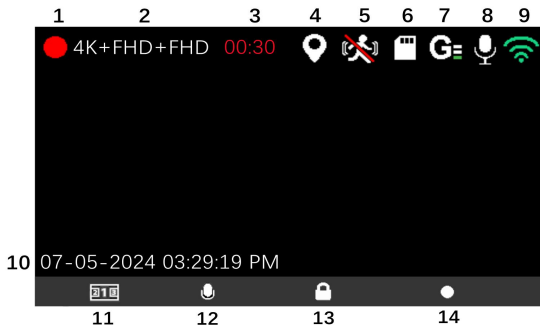
2. Important Notice

- This dash cam is intended for use in motor vehicle only. Do NOT install the camera where it might block the driver's view of road or the deployment of the airbag.
- The dash cam uses super capacitor instead of lithium battery as power source, which is safer and lighter, It is only used to save the last video after power cut. The camera will not power on without external power supply.
- Before using this device, please check the memory card first, and format the SD card, set the time and date in the menu.
- This camera records video at high resolution, Be sure to use a U3 or above high-speed Micro SD card. Maximum

support 256G cards.

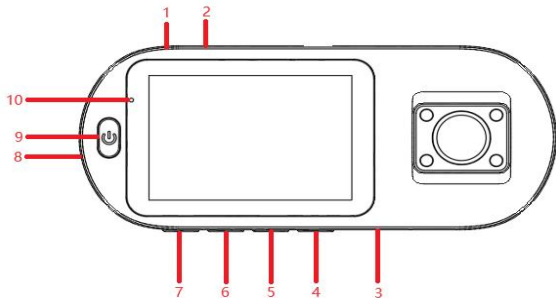
- To access the menu settings, please press the OK button to stop the video recording first.
- To use the parking monitoring function, please use the cable kit "Dash Cam Hard Wire Kit Mini USB / USB-C", (Please pay attention to the interface model)
- DO NOT leave the camera in direct sunlight for a long period of time or where the temperature could go above 140°F(60°C)
- Do NOT disassemble, repair, or modify the product yourself.
- For internal inspection and repair, contact the service center.

3. Interface and Button Function



1	Video display	2	Video Resolution
3	Recording time	4	GPS
5	Motion Detection	6	memory card
7	G-sensor	8	Microphone
9	WiFi	10	Time&Date
11	Screen switching	12	ON/OFF microphone
13	Emergency locking	14	Start/pause recording

Note: The dash cam uses super capacitor instead of lithium battery as power source, which is safer and lighter. It is only used to save the last video after power cut. The camera will not power on without external power supply. It is normal for the battery symbol on the screen to keep flashing.



1	AV interface	2	Type-C Port
3	Reset Hole	4	Confirm button

5	Down button	6	Menu/Playback
7	Up button	8	Memory card slot
9	Power button	10	Power light

[⏻] Power button, short press to turn on/off screen, long press to switch on/off the device.

[◀] Press to change multi views.

[M] Press to enter menu interface and photo mode.

[▶] Press the emergency lock button once to lock the video (if the storage card is full, it will not be overwritten in a loop and needs to be manually deleted);

Take the photo under the Photo Mode; confirm button.

[OK] Stop video recording; In photography mode, press to return to the recording interface.

4.Specification

Screen Display	2.45 inch LCD Screen
Video Resolution	4K+1080P+1080P 30fps
	2K+1080P+1080P 30fps
GPS tracker	Support(optional)
Video Format	MP4
Video Coding	H.264

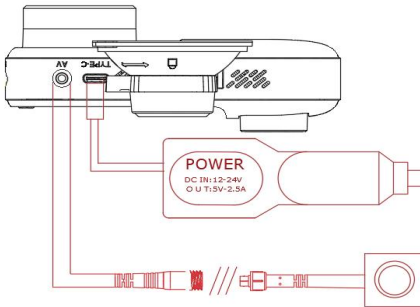
Picture Format	MJPEG
Loop Recording	1 Min/3 Min/5 Min
Audio Recording	ON/OFF
Storage	Micro SD Card (Up to 256GB)
G-sensor	Support
Motion detection	Support
Parking monitoring	Support
Language	Support multi-language
Battery	Super Capacitor
External Power Supply	5V/2A
Storage temperature	-10°~50° (14°F~122°F)
Operating temperature	-20°~ 60°(-4T~140°F)

5.Product installation

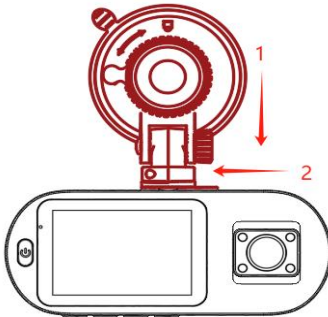
1.TF memory card installation



2.Power supply, camera installation



3.Bracket mounting (in the direction of the red boot sequence)



4.Installing the Dash Cam

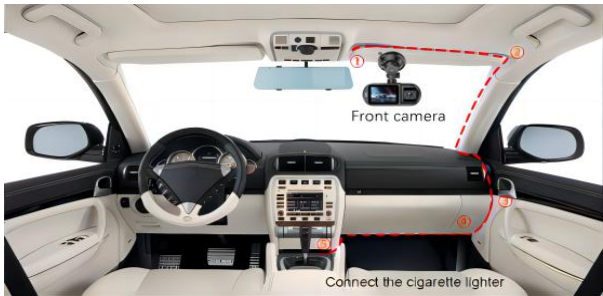
4.1.Use the Suction cup mount with to Install the dash cam on the windshield, recommended place near the rear view mirror facing

front, adjust the lens angle for best coverage.

4.2.Plug the included power adapter into the car cigarette lighter socket, the indicator will light up meaning power is on.

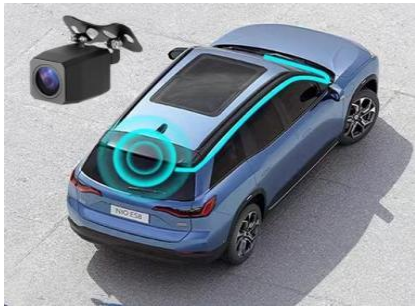
4.3.Connect the power cable to the USB port on the suction cup mount. For better looking, route the excess cable alongside the interior trim as the diagram shows.

4.4.After installation, please start the engine, and test it to make sure all function works well.



5.Install the rear camera

5.1.The rear camera is installed above the inner of the rear windshield. (It can be installed by yourself, the reversing visual function cannot be achieved, and it can only record rear videos)



5.2. The rear camera is installed above the license plate frame by a professional or yourself. And connect the camera to the reversing light power supply, which can achieve the reversing visual function. (The red power wire on the rear camera can be connected to the reversing light power supply.)



6.WiFi APP download manual

1.The WiFi name is (Viidure), you can search for Viidure in the

mobile browser and mobile application market , click to download and install.

2. Scan the QR code to download Viidure.

3.WiFi QR code has Apple and Android mobile phones corresponding to the QR code scan



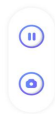
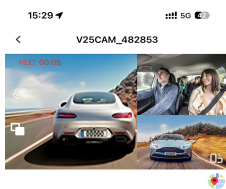
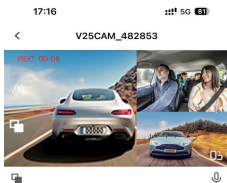
WiFi Instructions ([Note:WiFi auto open.](#))

1.Open the app and click “Add Camera” .

2.Join the V25 dash camera WiFi by going into your iPhone or Android phone's settings-WiFi-V25CAM_xxxxxx.Then Enter the default password:12345678.(. Join the network.At this time,WiFi icon on the camera will turn green.)

3.Open the Viidure application.Once your camera has successfully connected to WiFi, the camera will automatically sync. You will see the camera's live video feed on the APP.

4.You can set up the camera's system, take pictures, view playback or share videos on the app.



No GPS Tracker Display Interface



Camera Files



Camera Settings



GPS Tracker Display Interface



7.Description

Manual Power On/Off

1.Manual Power On

Hold the [⏻] button until the start up screen appears.

2.Video Recording

When a red dot is flashing on the screen, it means the camera is recording video, please press the OK button to pause the recording.

3.Manual Power Off

Make sure that recording has been stopped(no red dot flashing on the screen). Press the [⏻] button of the dash cam for 10 seconds to turn off the camera.

Reset the Device

If the dash cam does not function normally, try restarting the dash cam. Please insert a flattened paper clip into the "R" hole on the side of the dash cam for 5 seconds, then release it. The dash cam will restart.

Initial Settings

Before using the dash cam we recommend Formatting the Inserted Micro SD Card, setting the correct Language, Time and Date. After setting the initial settings, press [M] button to return to standby mode. Press the [OK] button to start camera operation.

System Menu Settings

Press the [OK] button to stop the recording and press the [M] button to enter the system menu.

Camera > Gallery > Video Setting > Camera Setting > System Setting > Media Setting

1. **Camera:** Press the [OK] button to enter camera mode, press the [▶] button to take photos, and press the [OK] button to return to the recording interface mode.

2. **Gallery:** Press the [OK] button to enter playback mode:

> **Event:** Event_Front, Event_Inside, Event_Rear;

> **Video:** Video_Front, Video_Inside, Video_Rear;

> **Photo:** Photo_Front, Photo_Inside, Photo_Rear.

Press the [M] button to return to the system menu

3. **Video Setting:** Press the [OK] button to enter Video Setting:

> **Resolution:** 3 Channel: 4K+1080P+1080P, 2K+1080P+1080P Select

Setting; 2 Channel: 4K+2K, 4K+1080P, 2K+2K, 2K+1080P Select

Setting; (The higher the resolution value, the clearer the recording) .

> **Inside Image Switch:** Turn ON/OFF the in car camera recording screen.

> **Flip Vertical:** Set the screen flip function of the rearview mirror (this function is not displayed when the rearview mirror is not connected).

> **Flip Horizontal:** Mirror image of the camera after turning on/off (this function is not displayed when the rearview mirror is not connected).

> **Exposure:** +2, +1, 0, -1.0, -2.0. (Exposure is used to manually control the light sensitivity settings. The default is 0).

> **G-Sensor:** The sensitivity during collision can be set, this feature option has off, high, middle, and low functions

(when the vehicle experiences a severe impact while driving, the impact will be locked and will not be automatically recorded in a loop delete, (if the sensitivity of this function is too high, it will cause the storage card to be full. if the storage card always prompts that the storage card is full, please format the storage card and set this option to bottom.

> **Motion Detection:** Motion Detection is used to pause recording when no motion is detected in front of the camera, and to start recording when motion is detected again. Default is off.

> **Parking Monitor: (Optional):** With optional hard wire kit connected, the Parking Monitor is enabled, the camera will stay standby after the engine is turned off. When camera detects shaking, it will automatically turn on and take a short video, then return to standby automatically. (Must use the hard wire kit when using the Parking Monitor function.)

> **Loop Record:** 1 / 3 / 5 Minutes. This function allows you to set the recording video file length to 1/3/5 minutes to automatically overwrite the earliest file when the SD card's storage fills up.

Press the [M] button to return to the system menu.

4. **Camera Setting:** Press the [OK] button to enter Camera Setting:

> **Resolution:** 12M(4608x2592), 8M(3840x2160), 5M(3072x1728)

> **Exposure:** +2, +1, 0, -1, 0, -2, 0. (Exposure is used to manually control the light sensitivity settings. The default is 0).

> **Burst Photo:** OFF/ON. Snapshots that can be taken continuously.

Press the [M] button to return to the system menu.

5. **System Setting:** Press the [OK] button to enter System Setting:

> **Screen Save:** OFF, 1Min, 3Min, 5Min. Timing can automatically turn off the display screen, so that the product can work under extremely

low power consumption. Choose " 1Mins" means that it will enter the power saving mode after 1Mins of power on, and turn off the display.

>**Date/Time:** Set the time and date. Press the[◀] and [▶] button to adjust the numbers, then press the [M] button to move on to the next step. Once the adjustment is complete, select "Confirm" and press the [OK] button to exit the time setting.

>**Night Vision:**Auto,ON,OFF.Turn on or off the 4 IR LED lights next to the inside camera. If set to "Auto", the IR LED light will automatically turn on when the light dims.

>**Speed Unit:**KMH / MPH.

>**USB Mode:**Mass Storage,Power On Only.

>**WIFI Setting:** OFF,ON. default ON.

>**Language:** Set the language for the dash cam
(English,German,French,Spanish,Italian,etc.)

>**TimeZone:** Set the correct time zone.(GPS optional)

>**Format:** Completely delete all files in the storage card.

>**Default Setting:** Return menu setting Defaults.

>**Device Info:** The firmware version of the dash cam.

Press the [M] button to return to the system menu.

6.**Media Setting:**Press the[OK] button to enter Media Setting:

>**KeyPad Tone:** OFF,ON. default ON.

>**Video Volume:**Low,Middle,High.

>**Startup Sound:** Power ON/OFF sound.default ON.

>**Anti Flicker:** 50Hz/60Hz, If the camera interferes with the radio, try changing the Anti Flicker.

>**Date Stamp:** Enable/Disable the date and time marks in video files.default ON.

GPS Tracker

GPS track map player download (option)

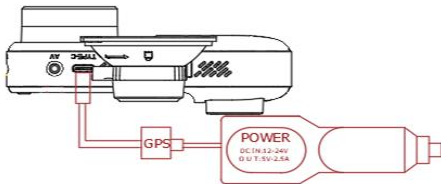
PC version enters website <https://pcgps.ce2ce.com/hit/hitplayer.html>.
html to Download.

Note : system requirements :

1 . Windows 7/8/10 operating system, 64 bits , 32 bits ; (Windows Xp does not support).

2 . Mac os system directly in the store search: HIT GPS Playerv
download and instal.

3.open the software after installation, open the video file that needs to be played, or drag the file directly to the player bar, then display the GPS track after playing.



8.Problems and Answers

1.Can't get to the menu?

When the camera is recording video, the menu button does not work. A flashing green dot on the screen means the camera is recording video. Please press OK to pause recording, then press M to enter the menu.

2.The dash cam will stop automatically when recording.

Solution:

- ①.Check whether the memory is full.
- ②.Check whether the loop recording function of the dash cam is working.
- ③.Check whether the Micro SD card is high-speed above U3.
- ④. Playback the recorded video on dash cam to check whether there might be too many locked videos, which cause the SD card space run out and stop looping recording. If yes, please format the SD card.

3.If the video played on the computer is somehow jammed or not fluent. There might be the problem with the memory card

speed.

Solution:

- ①.Format your Micro SD card in the camera.
- ②.Change a U3 or above high-speed Card.

4.There are stripes interference in the video. Or radio is disturbed.

Solution:

There should be wrong light freq. According to the local main frequency, make the appropriate settings 50HZ or 60HZ.

5.Suction mount cannot attach on windshield well?

Solution:

- ① .Please clean the windscreen where attaching with a glass cleaning wipe. Removed the protective film, If it does not work, warming your windscreen then try it again.
- ②.Please soak suction mount to warm water for a moment.
- ③. If it is still not working, we are glad to send a new suction mount to you, please contact us to get a replacement.

6.Without external power supply, the camera will not power on, or the camera will power off immediately after the external power supply is disconnected.

Solution:

This is normal. This dash cam needs a 5V 2.5A external power supply to be power on.

7.The camera keeps turning on and off repeatedly.

Solution:

- ①. Please check if the charging cable is well connected.
- ②. Please insert a paper clip into the "R" hole on the side of the camera for 3 seconds, then release. The camera will restart automatically.
- ③. Please format the memory card in the menu.
- ④. Please check if the camera is back to normal.

8.How does the camera work after it crashes?

Solution:

If the machine crashes for some reason during use, please insert a paper clip into the "R" hole on the side of the camera for 3 seconds, then release. The camera will restart automatically.

FCC warning:

1. This device should be installed and operated with minimum distance 20cm between the radiator&your body.
2. This device complies with part 15 of the FCC Rules. Operation is subject to the following two conditions:
 - (1) This device may not cause harmful interference, and
 - (2) This device must accept any interference received, including interference that may cause undesired operation.
3. Changes or modifications not expressly approved by the party responsible for compliance could void the user's authority to operate the equipment.
4. This equipment has been tested and found to comply with the limits for a Class B digital device, pursuant to part 15 of the FCC Rules. These limits are designed to provide reasonable protection against harmful interference in a residential installation. This equipment generates, uses and can radiate radio frequency energy and, if not installed and used in accordance with the instructions, may cause harmful interference to radio communications. However, there is no guarantee that interference will not occur in a particular installation. If this equipment does cause harmful interference to radio or television reception, which can be determined by turning the equipment off and on, the user is encouraged to try to correct the interference by one or more of the following measures:
 - Reorient or relocate the receiving antenna.
 - Increase the separation between the equipment and receiver.
 - Connect the equipment into an outlet on a circuit different from that to which the receiver is connected.
 - Consult the dealer or an experienced radio/TV technician for help.