

仪器装机清单

感谢您购买使用我公司产品，为了保护您的权益，请在开箱后第一时间核对清单，如发现仪器型号、配件与清单不符，请致电供货商调换或补发。

物 品	数 量	备 注
HPCS-330X 主机	1	内置锂电池
HPCS-330X 探头	1	内置锂电池
HPCS-330X USB通讯模块	1	USB串口通讯
5V/1A电源适配器	1	USB接口
数据线	1	Type-C接口 承载电流≥1A
合格证	1	出厂检验标志
保修卡	1	产品保修凭证
产品手册	1	产品简明手册
Pc机软件	1	Windows操作系统

保修范围

杭州虹谱光色科技有限公司保证您购买的每一台设备都在出厂前做过严格的检验和测试，产品质量和数据计算完全符合要求；但不能保证在运输、误用、意外或非正常状况使用而造成的损坏，所以设备自发货之日起，主机15天内包换，一年内免费维修（配件90天，易损件不保），保修期内由于操作不当或人为损坏，维修费用需由用户承担；超过保修期后，我们将以收费方式提供维修服务。

保修期内维修或调换，用户只需支付邮资即可，非保修期内或人为损坏的维修，我们将对维修费用进行估价后通知用户，取得用户同意维修后维修设备，维修费用及邮资由用户承担。保修期内设备维修或更换后继续执行原保修方案；超过保修期，设备维修后同故障保修30天（新购配件90天，易损件不保）。

开机与测试

开机：按一下仪器电源键（仪器右侧黑色按键），屏幕上显示开机画面2秒进入测试界面。

关机：按住电源键3秒以上弹出关机对话框，点击“关机”。

单机测试步骤：

步骤1：将仪器置入被测位置；

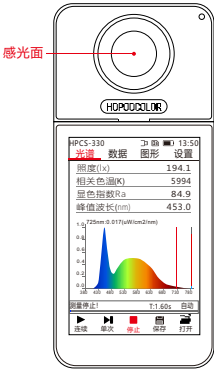
步骤2：按一次仪器右侧的“电源键”或者点击屏幕下方的【连续】或【单次】图标即可开始测试。（“单次测试”测完一次后会自动停止测试，可省略步骤3）。

步骤3：等待测试数据稳定后，再按一次仪器右侧的“电源键”或者点击屏幕下方【停止】图标，即可完成测试。

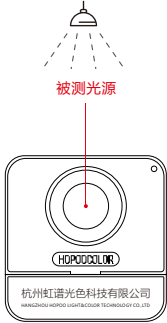
步骤4：点击屏幕下方的【保存】图标，保存测试数据。保存方法请参阅“文件保存”部分。

*注意：

开机后直接按电源键进行测试时默认为单次测试，如果按过一次连续测试图标后，再用电源键进行测试时变为连续测试；如果再过一次单次测试图标后，再用电源键进行测试时又变为单次测试。



HPCS-330X测试示意



HPCS-330X探头测试示意

文件保存与U盘模式设置

文件保存：

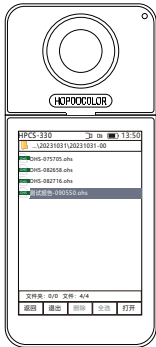
当测试完成后，点击“保存”图标弹出文件保存对话框，使用不同的输入法输入文件的保存名称，点击【确认】文件保存完成（如下图组）。

xxx.ohs文件为设备和软件都能识别打开的文件格式。

xxx.csv为Excel数据文档格式。CSV数据文档格式分为单条保存和多条保存，单条的Excel文件包含有光谱数据也可用仪器打开显示图形；多条数据保存格式不包含波长数据只能在电脑上打开查看。



文件存储



测试数据文件类型与文件头后缀名一致

U盘模式设置：

1. 点击显示屏右上角的“设置”菜单进入仪器设置，点击“系统设置”，再点击“USB模式”后的字体，弹出USB模式选择框选择“U盘模式”点击【确认】；

2. 用USB数据线连接仪器与电脑，5-10秒后电脑上出现U盘图标，即可读取仪器内的测试数据、电子版说明书及测试软件。

产品技术指标

分光模式	紧凑型交叉非对称CT分光系统
传感器	高精度CCD
受光器件	Φ17mm余弦修正器
色温范围	1,000K ~ 100,000K
照度范围	10lx ~ 200klx
积分时间	50μs ~ 10000ms
数据接口	蓝牙/USB Type-C
使用温度/湿度范围	(-10 ~ 40)°C，相对湿度<70%(无冷凝)
存储温度/湿度范围	(-20 ~ 50)°C，相对湿度<70%(无冷凝)
屏幕尺寸	3.5英寸高清触摸屏
通讯方式	主机-PC：Type-C
存储容量	512MB(可用容量480MB)
供电方式	内置锂电池/电源适配器
内置锂电池	容量:2500mAh
充电适配器	输入：AC110V~220V ±10% 输出：DC5V/1A ±5%
数据线	Type-C接口 承载电流≥1A
主机尺寸/重量	138mm× 61mm× 23.4mm/ 整机约260g
设备特点	自主研发操作系统，携带方便

本设备符合FCC规则第15部分的规定。操作须遵守以下两个条件：

- (1)本设备不得造成有害干扰
- (2)本设备必须接受任何收到的干扰，包括可能导致意外操作的干扰。任何未经经负责方明确批准的更改或修改都可能导致用户操作本设备的权限失效。

注意：本设备已经过测试，符合 FCC 规则第 15 部分对 B 类数字设备的限制。这些限制旨在为住宅安装提供合理的保护，防止有害干扰。本设备会产生、使用并能辐射射频能量，如果不按照说明进行安装和使用，可能会对无线电通信造成有害干扰。

但是，不能保证在特定安装中不会发生干扰。

如果本设备确实对无线电或电视接收造成有害干扰(可通过关闭和打开设备来确定)，则建议用户尝试通过以下一种或多种措施来纠正干扰：

- 重新调整或重新放置接收天线。
 - 增加设备与接收器之间的距离。
 - 将设备连接到与接收器所连接电路不同的电路插座。
 - 咨询经销商或经验丰富的无线电/电视技术人员寻求帮助。
- 本设备已评估为符合一般射频暴露要求。本设备可在便携式暴露条件下使用，不受限制。



HPCS-330系列光谱照度计

HPCS-330 SERIES SPECTRAL ILLUMINANCE METER

简明手册

SIMPLE MANUAL

Ver.1.0

杭州虹谱光色科技有限公司

HANGZHOU HOPOO LIGHT&COLOR TECHNOLOGY CO.,LTD

INSTRUMENT LIST

Thank you for purchasing and using our products. In order to protect your rights, please check the list immediately after receiving. If you find that the instrument model and accessories do not match the list, please call the supplier for help.

Item	Quantity	Remarks
HPCS-330X Series host	1	Built-in lithium battery
HPCS-330X Probe	1	Built-in lithium battery
HPCS-330X USB Module	1	USB serial communication
5V/1A power adapter	1	THE USB interface
USB cable	1	≥1A current carrying capacity
Certificate of approval	1	Factory inspection mark
Warranty card	1	Product Warranty Certificate
Product manual	1	Please read it carefully before use
PC software	1	Windows Operating System

WARRANTY COVERAGE

Every piece of equipment you purchase has been checked before factory, and the product quality and data calculations fully meet the requirements; However, damage caused by transportation, misuse, accidental or abnormal use cannot be guaranteed. During the warranty period, due to improper operation or man-made damage, the maintenance costs shall be borne by the user; If the warranty period has expired, we will provide maintenance services for a fee.

For maintenance or replacement during the warranty period, the user only needs to pay the postage. For repairs that are not within the warranty period or man-made damage, we will estimate the repair cost and notify the user.

In warranty period, equipment maintenance or replacement, continue to carry out the original warranty plan. Beyond warranty period, if the fault is the same, the warranty for 30 days after maintenance. New accessories guarantee for 90 days. The wearing parts and accessories are not covered by the warranty.

BOOT AND TEST

Boot:

Power on: Press the power button of the instrument (black button on the right side of the instrument), which will be displayed on the screen. Boot screen 2 seconds to enter the test screen.
Shutdown: Press and hold the power button for more than 3 seconds to pop up the shutdown dialog box, click "Shutdown".

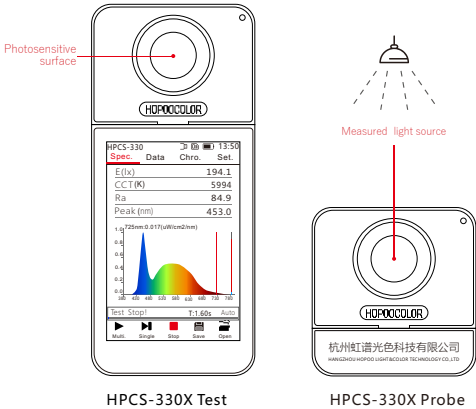
Test steps:

Step 1: Put the instrument into the measured position;
Step 2: Press the "Power button" once or click [Continuous] or [Single] icon at the bottom of the screen to start test.
Step 3: When click Continuous test, After test stable, click "Stop" icon then test finished.

*Note:

The default is a single test when you press the power button directly after boot. If you press the continuous test icon once, it becomes a continuous test when you press the power key to test; if you press the single test icon again, then When the test is performed with the power button, it becomes a single test.

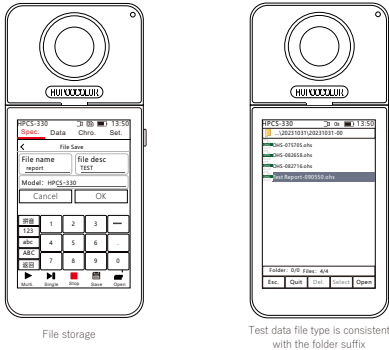
Step 4: Click the [Save] icon at the bottom of the screen to save the test data. Please refer to the "File Saving" section for the saving method.



FILE SAVING AND U DISK MODE SETTING

File save:

When the test is complete, click the "Save" icon to pop up the file save dialog box, use a different input method to enter the file name to save, and click [OK] to save the file (as shown in the group below). OHS file is a file format recognized by equipment and software. CSV is an Excel data file format. The CSV data file format is divided into single save and multiple save. A single Excel file containing spectral data can also be opened and displayed by the instrument. The multiple data save format does not contain wavelength data and can only be opened on the computer.



U disk mode setting:

1. Click the "Settings" menu in the upper right corner of the display to enter the instrument settings, click "System Settings", and then click the "USB Mode", the USB mode selection box will pop up, and select [U Disk Mode] Click OK.

2. Connect the instrument to the computer with a USB data cable. After 5-10 seconds, the USB flash drive icon will appear on the computer, and the data files in the instrument, the electronic version of the manual and the test software can be read.

TECHNICAL INDICATOR

Splitting mode	Compact cross asymmetric CT spectroscopy system
Sensor	High-precision CCD
By light device	Φ 17mm Cosine corrector
CCT range	1,000K~100,000K
Illuminance measurement range	10lx~200klx
Integration time	50μs~1000ms
Date interface	Bluetooth/USB Type-C
Using temperature / Humidity range	(-10~40)°C relative humidity <70% (non-condensing)
Storage temperature / Humidity range	(-20~50)°C relative humidity <70% (non-condensing)
Screen size	3.5"IPS HD LCD touch screen
Communication mode	Host -PC; Type-C
Storage capacity	512MB(Available capacity480MB)
Power supply mode	Built in lithium battery / power adapter
Built in lithium battery	2500mAh
Charging adapter:	Input: AC110V~220V ±10% Output: DC5V/1A ±5%
Data cable	Type-C Carrying current ≥1A
Host Size/ Weight	138*61*23.4mm / about 260g
Features	Independent research and development system, easy to carry

This device complies with part 15 of the FCC Rules. Operation is subject to the following two conditions:
(1) This device may not cause harmful interference, and
(2) This device must accept any interference received, including interference that may cause undesired operation.
Any changes or modifications not expressly approved by the party responsible for compliance could void the user's authority to operate the equipment.
NOTE: This equipment has been tested and found to comply with the limits for a Class B digital device, pursuant to Part 15 of the FCC Rules. These limits are designed to provide reasonable protection against harmful interference in a residential installation. This equipment generates, uses and can radiate radio frequency energy and, if not installed and used in accordance with the instructions, may cause harmful interference to radio communications.
However, there is no guarantee that interference will not occur in a particular installation. If this equipment does cause harmful interference to radio or television reception, which can be determined by turning the equipment off and on, the user is encouraged to try to correct the interference by one or more of the following measures:
-- Reorient or relocate the receiving antenna.
-- Increase the separation between the equipment and receiver.
-- Connect the equipment into an outlet on a circuit different from that to which the receiver is connected.
-- Consult the dealer or an experienced radio/TV technician for help.
The device has been evaluated to meet general RF exposure requirement. The device can be used in portable exposure condition without restriction.



天猫、淘宝扫一扫
Tmall, Alibaba Link



官方网址
official website

杭州虹谱光色科技有限公司

HANGZHOU HOPOO LIGHT&COLOR TECHNOLOGY CO.,LTD

地址 Add: 杭州市西湖区三墩镇西园二路9号1幢4楼
4 / F, building 1, No. 9, Xiyuan 2nd Road, Sandun Town Xihu District, Hangzhou, China

电话 Tel:0571-85281329 0571-85458590

邮件 Email:sales@hopoocolor.com sales_fob@hopoocolor.com

www.hopoocolor.cn