



Smart PTZ Camera

Operation Instruction

Packing list

1. Camera*1
2. Bracket*1
3. Power cable*1
4. Power adapter*1
5. Mounting kit*1
6. Operation instruction*1

Product appearance



Light Indicators

Light Indicators	Camera Status
Flashing blue light	The device is connecting
Blue light always on	The device successfully connected
Blue light off	Not connected to power supply

Quick start

Download And Add

Search the app store for 'TinoSec ' app or use your browser to scan the QR code below to download. Register and use (by email, agree to the user agreement and obtain a verification code).

Scan the QR code to go to the link:

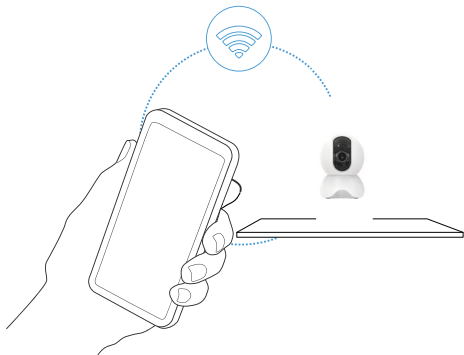


CAUTION

DO NOT use 3rd party QR code scanning tool or app to avoid scam or malware. Use QR code scanning app provided by your mobile phone system, e.g., the system camera app

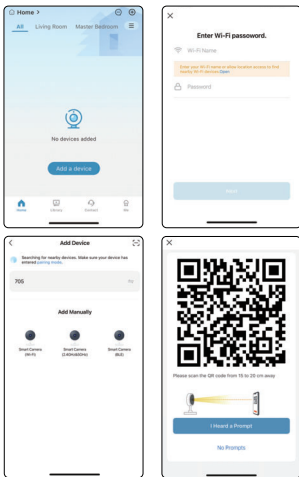
Add camera

There are three ways to add a camera: QR code scanning, hotspot adding, and Bluetooth adding.



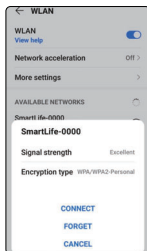
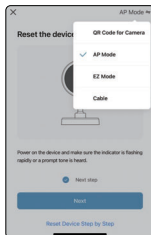
Add a QR code

After clicking on the add device, select the corresponding product, enter the wifi name and password, scan the QR code that appears on the phone with the device, and the link will be successful.



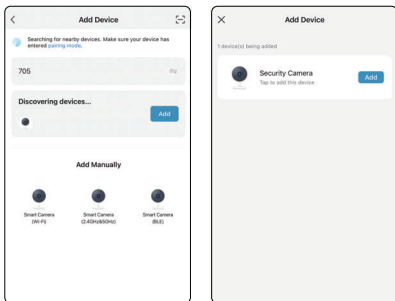
Hotspot addition

Select AP mode, enter WiFi name and password, then select AP hotspot Smartlife-XXXX, and return to the add step



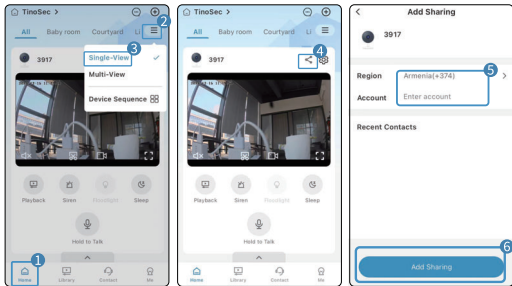
Bluetooth add mode

Open the Bluetooth on your phone, select the Bluetooth add mode, or simply add it on the Bluetooth device that pops up



Sharing methods

Select the home menu, then select the menu bar in the upper right corner, select Single View, select the share button, enter the corresponding region and account, and click share.

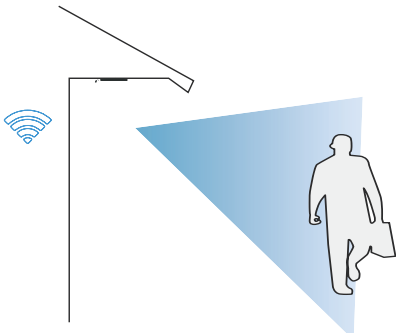


Install the camera

You can place the camera on a shelf or other surfaces to use, or you can install it on a wall to use.

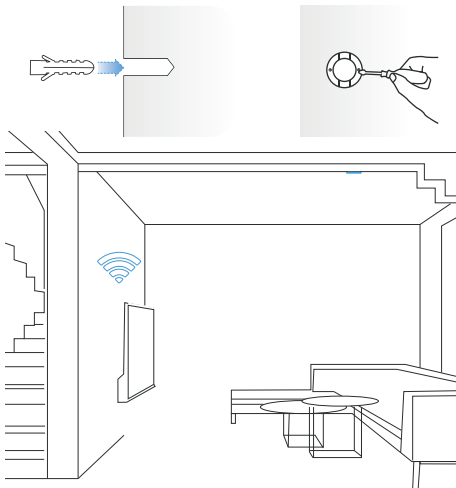
(1) Select a good spot for your camera

Select a good spot for your camera, please install the camera in a position where its view is not blocked and ensure that it is within the coverage of the Wi-Fi network.



(2) Install the bracket

Fix the camera to the desired location. You can directly place the camera on a flat surface or fix the bracket to the wall or ceiling by screws, and then screw the camera to the fixed base.



Product specification

Item	Specification
Horizontal angle	355°
Vertical angle	110°
Camera Lens	Field of view 116°
Image resolution	2MP (1920*1080)
Image coding	HD: H.264
Audio	Duplex two-way audio
Storage media	Micro SD card (Up to 128GB)
Night vision light	Infrared light
Network	Wi-Fi (2.4GHz 802.11b/g/n)
Power	DC 5V/1A
Operating	-10° ~ 45° C
Size(LxWxH)	160mm*73.58mm*73.58mm

FAQ

1.Q:The camera is netless or offline?

- A:
1. Check whether the power supply is working properly
 2. Power off, restart the device and reconnect to the network (press the reset button for no less than 3 seconds)
 3. Areas with weak signal coverage
 4. Signal interference shielding in special places

2.Q:How does the camera store the video

- A:
1. The camera supports F32 format, the maximum capacity is 128G, automatic video recording after recognition to the card, automatic overwriting the original video and cyclic recording after the storage is full;
 2. Support the opening of cloud storage service to store video.

FCC Warning:

This equipment has been tested and found to comply with the limits for a Class B digital device, pursuant to part 15 of the FCC Rules. These limits are designed to provide reasonable protection against harmful interference in a residential installation. This equipment generates, uses and can radiate radio frequency energy and, if not installed and used in accordance with the instructions, may cause harmful interference to radio communications. However, there is no guarantee that interference will not occur in a particular installation. If this equipment does cause harmful interference to radio or television reception, which can be determined by turning the equipment off and on, the user is encouraged to try to correct the interference by one or more of the following measures:

- Reorient or relocate the receiving antenna.
- Increase the separation between the equipment and receiver.
- Connect the equipment into an outlet on a circuit different from that to which the receiver is connected.
- Consult the dealer or an experienced radio/TV technician for help.

Caution: Any changes or modifications to this device not explicitly approved by manufacturer could void your authority to operate this equipment.

This device complies with part 15 of the FCC Rules. Operation is subject to the following two conditions:

(1) This device may not cause harmful interference, and (2) this device must accept any interference received, including interference that may cause undesired operation.

This equipment complies with FCC radiation exposure limits set forth for an uncontrolled environment. This equipment should be installed and operated with minimum distance 20cm between the radiator and your body.