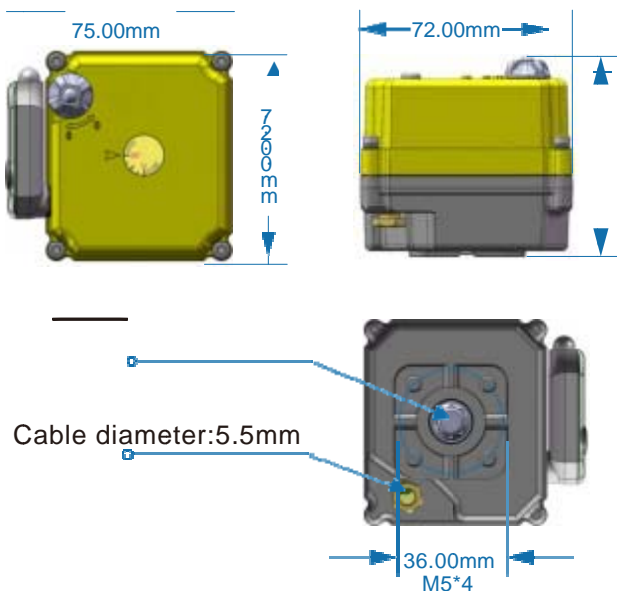


# PM-01L Micro Electric Actuator

## Technical indicators

- Voltage : DC24V
- Rated Power:  $\leq 15W$
- Control Signal: TUYA WIFI
- Ambient humidity :  $\leq 90\% RH$
- Impact resistance : 2G
- Working temperature :  $-25 \sim 55^{\circ}$
- Weight : 0.87kg
- Protection grade : IP65
- Output torque : 15N.m

## Size:



## ● Installation

plane: 40\*40mm ● ISO5211-F03

## Control Panel APP : TUYA



ON/OFF Indicator Light  
Network Indicator Light

### Multi-Function Buttons

Press and hold for 6 seconds and then the green light will flash WiFi pairing

Press once to turn the valve

## Function Description

- ON/OFF Indicator Light:  
When the red light is on, the valve is open or in the process of opening.

### ● Network Indicator Light:

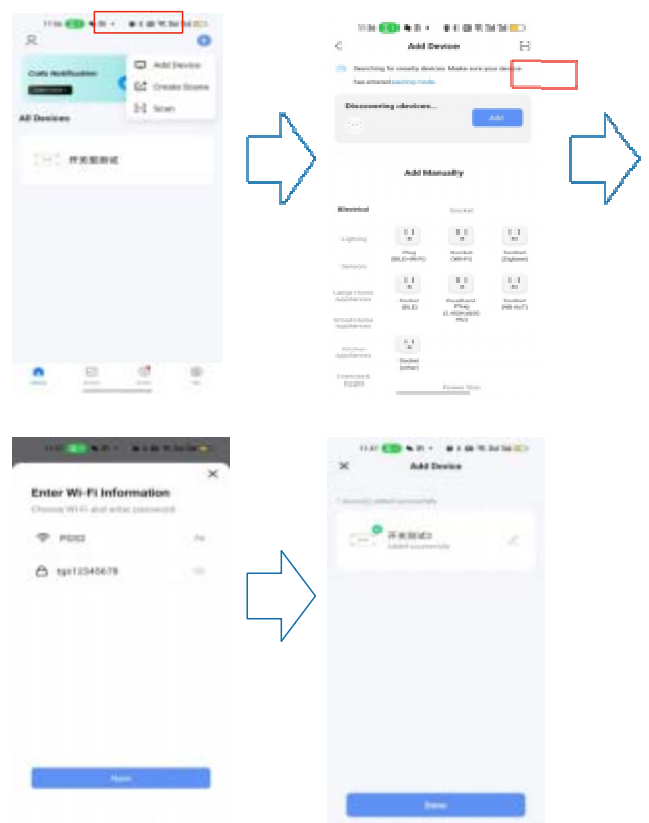
1. When the green light is constantly on, the network is working normally.
2. When the green light flashes, it is in the device network WIFI configuration.
3. When the green light is off, the device is disconnected from the network and the multi-function button cannot function properly.

### ● Multi-Function Buttons:

1. Click once to open or close the valve.
2. Press and hold the button for 6 seconds, and when the green light flashes, enter the WiFi configuration state again.

## WiFi Configuration

1. When configuring for the first time, the green light flashes when powering on. Turn on the Bluetooth and WiFi functions of your phone, then open the Tuya App and click Add Developer Ice, select a device in the list, enter the WIFI password, and wait for the progress addition to complete successfully.
2. If you need to reconfigure WiFi, please press and hold the "Settings" button for 6 seconds, the green light will flash. Turn on the Bluetooth and WiFi functions, then open the Doodle app, click "Add Device", select the device in the list, enter the WIFI password, and wait for the addition progress to complete successfully.



After-sales email:  
aibogj@163.com Website:  
www.aiboep.com

## FCC Warning Statement

Changes or modifications not expressly approved by the party responsible for compliance could void the user's authority to operate the equipment. This equipment has been tested and found to comply with the limits for a Class B digital device, pursuant to Part 15 of the FCC Rules. These limits are designed to provide reasonable protection against harmful interference in a residential installation. This equipment generates uses and can radiate radio frequency energy and, if not installed and used in accordance with the instructions, may cause harmful interference to radio communications. However, there is no guarantee that interference will not occur in a particular installation. If this equipment does cause harmful interference to radio or television reception, which can be determined by turning the equipment off and on, the user is encouraged to try to correct the interference by one or more of the following measures:

- Reorient or relocate the receiving antenna.
- Increase the separation between the equipment and receiver.
- Connect the equipment into an outlet on a circuit different from that to which the receiver is connected.
- Consult the dealer or an experienced radio/TV technician for help.

This device complies with part 15 of the FCC Rules. Operation is subject to the following two conditions: (1) This device may not cause harmful interference, and

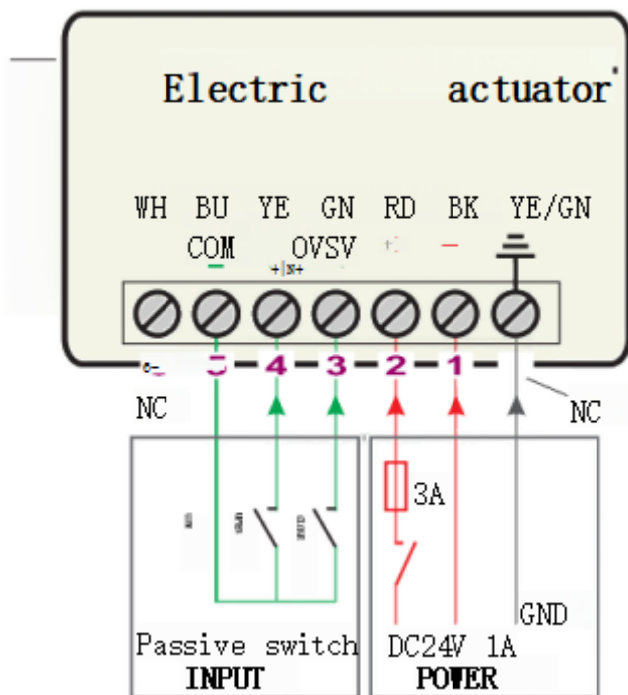
(2) this device must accept any interference received, including interference that may cause undesired operation.

## RF Exposure Statement

To maintain compliance with FCC's RF Exposure guidelines, This equipment should be installed and operated with minimum distance of 20cm the radiator your body. This device and its antenna(s) must not be co-located or operation in conjunction with any other antenna or transmitter.

Features: power supply and signal isolation, safety signal control

AC Power

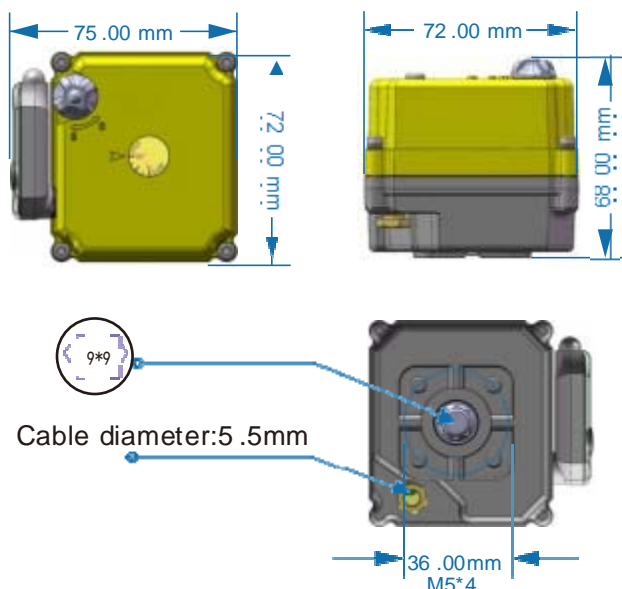


# PM-01 L Micro Electric Actuator

## Technical indicators

- Voltage : DC24V
- Rated Power: ≤15W
- Control Signal: TUYA WIFI
- Ambient humidity : ≤90 %RH
- Impact resistance : 2G
- Working temperature : -25~55 °
- Weight : 0.87kg
- Protection grade : IP65
- Output torque : 15N.m

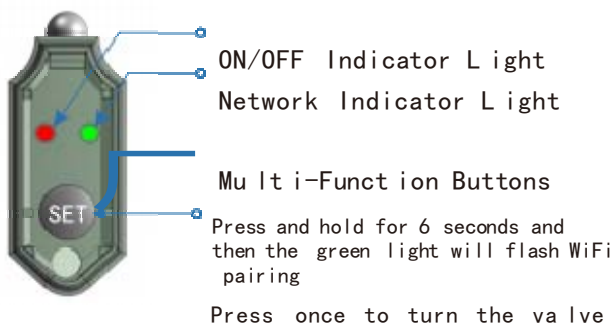
## Size:



## ● Installation

plane: 40\*40mm ● ISO5211-F03

## Control Panel APP : TUYA



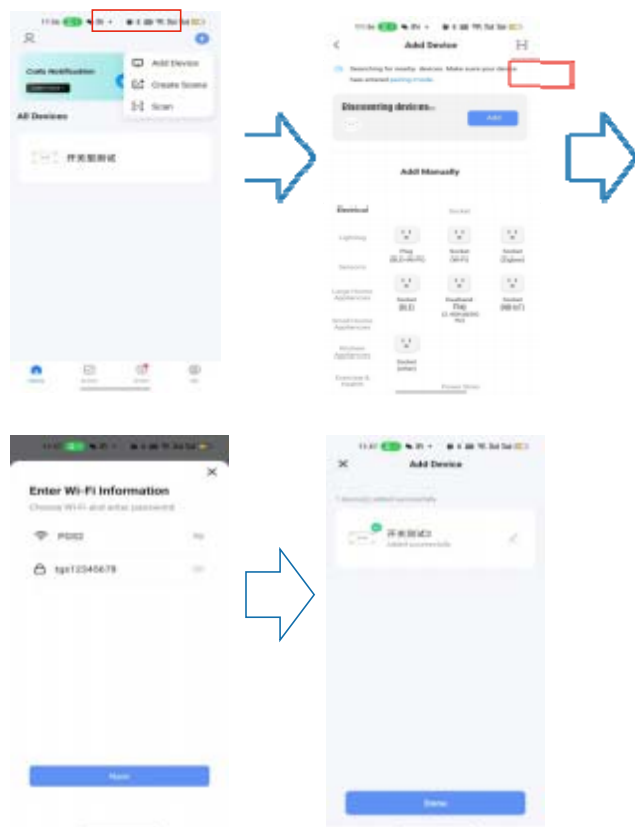
## Function Description

- ON/OFF Indicator Light:  
When the red light is on, the valve is open or in the process of opening.

- Network Indicator Light:
  1. When the green light is constantly on, the network is working normally.
  2. When the green light flashes, it is in the device network WIFI configuration.
  3. When the green light is off, the device is disconnected from the network and the multi-function button cannot function properly.
- Multi-Function Buttons :
  1. Click once to open or close the valve.
  2. Press and hold the button for 6 seconds, and when the green light flashes, enter the WiFi configuration state again.

## Wi Fi Configuration

1. When configuring for the first time, the green light flashes when powering on. Turn on the Bluetooth and WiFi functions of your phone, then open the Tuya App and click Add Device, select a device in the list, enter the WIFI password, and wait for the progress addition to complete successfully.
2. If you need to reconfigure WiFi, please press and hold the "Settings" button for 6 seconds, the green light will flash. Turn on the Bluetooth and WiFi functions, then open the Doodle app, click "Add Device", select the device in the list, enter the WIFI password, and wait for the addition progress to complete successfully.

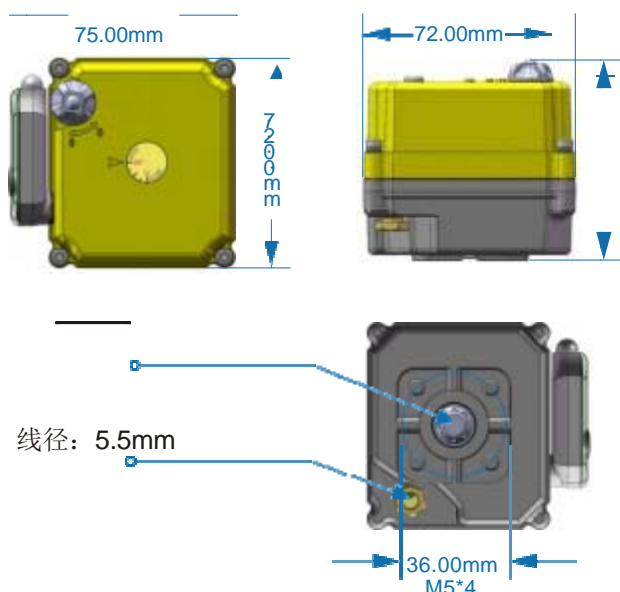


# PM-01L微型电动执行器

## 技术指标

- 电压：DC24V
- 额定功率：≤15W
- 控制信号：TUYAWIFI
- 环境湿度：≤90%RH
- 抗冲击性：2G
- 工作温度：-25~55°重量：0.87kg
- 防护等级：IP65
- 输出扭矩：15N.m

## Size:



- 安装平面:
- 40\*40mm ISO5211-F03

## 控制面板

## APP: TUYA



开/关指示灯  
网络指示灯

多功能按钮  
按住6秒绿灯闪烁WiFi配对  
按一次即可转动阀门

## 功能说明

- 开/关指示灯:  
当红灯亮时, 阀门打开  
或正在开通过程中。

## ●网络指示灯:

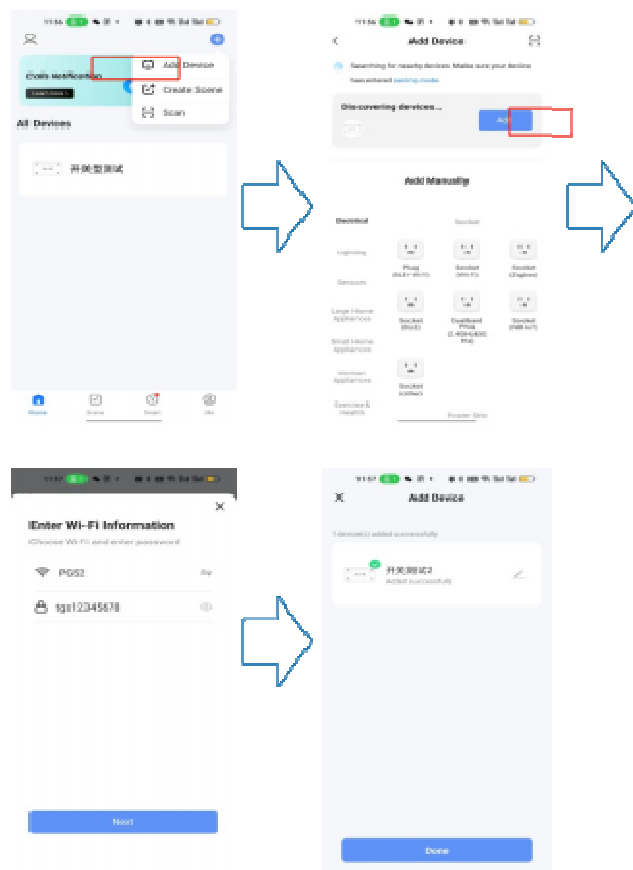
1. 当绿灯常亮时, 网络工作正常。
2. 当绿灯闪烁时, 表示处于设备网络WiFi配置。
3. 绿灯灭时, 设备与网络断开, 多功能按钮无法正常使用。

## ●多功能按钮:

1. 单击一次可打开或关闭阀门。
2. 按住按钮6秒, 绿灯闪烁时, 再次进入WiFi配置状态。

## WIFI 无线网络配置

1. 第一次配置, 上电时绿灯闪烁。 打开手机的蓝牙和WiFi功能, 然后打开涂鸦App, 点击添加开发者Ice, 在列表选择一个设备, 输入WiFi密码, 等待进度添加成功完成。
2. 重新配置WiFi, 请长按“设置”按钮6秒后, 绿灯闪烁。 打开您的蓝牙和 WiFi 功能然后打开Doodle 应用程序, 单击“添加设备”, 在列表中选择设备, 输入WiFi密码, 等待进度添加成功完成。



After-sales email:  
aibogj@163.com Website:  
www.aiboep.com

特点：电源与信号隔离，安全信号控制  
Features: power supply and signal isolation, safety  
signal control

