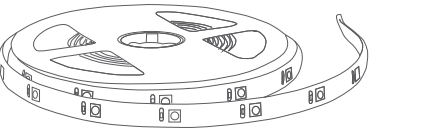


# Light Strip User Manual



Model: GTW-800-BLACK

Thank you for choosing us. Before using your new product, please read these instructions to prevent any damage.



01

## SAFETY WARNINGS AND GUIDELINES

When using electrical products, basic precautions should always be followed.

WARNING: These products may represent a possible shock or fire hazard if improperly installed or attached in any way.

Products should be installed in accordance with this install guide, current electrical codes.

### WARNING:

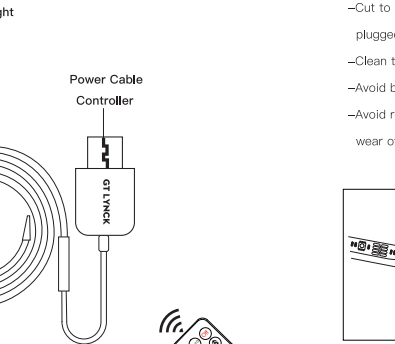
- Risk of electric shock
- Do not use product where directly exposed to water.
- This product is not a toy.
- Only use the power supply applied; using a different one can damage the product.
- For safety reasons, do not break down this product, and use only in the manner intended by the manufacturer.

DO NOT roll up when using. Please spread out the LED Strip Light before connecting to power supply.

Manufacturer: Shenzhen HuaRongYao Technology Co.,Ltd  
Address: 2nd Floor, Building C, Sanmin Industrial Park, Shuitian Community, Shiyan Sub-district, Bao 'an District, Shenzhen City

02

## PRODUCT INSTRUCTIONS

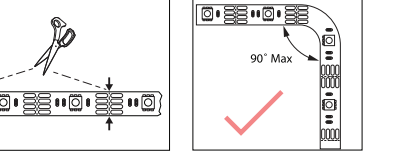
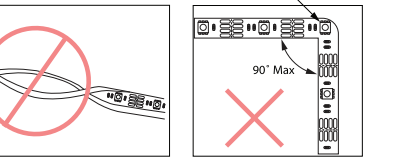


**Specifications**  
Interface: USB  
Color: RGB  
Self adhesive: yes  
Input voltage: 5V DC 1A  
Wireless Control Distance: 10M (No occlusion)

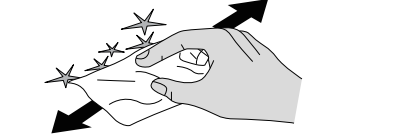
03

## PRE-INSTALLING

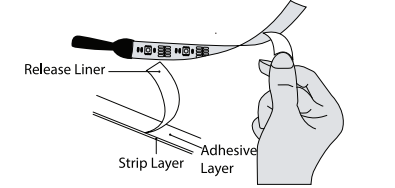
- Measure to the desired length before installation.
- Cut to length at scissor marks on Strip Light (ensure the power supply is not plugged in at the wall outlet).
- Clean the area thoroughly (surface must be free of dust, dirt or grease).
- Avoid bending the strip light which may damage the LEDs.
- Avoid removing and relaying the Strip Light multiple times as the adhesive may wear off.



04

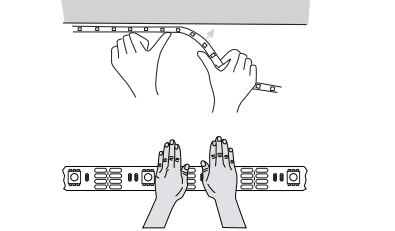


1. Clean the installation surface. Make sure the surface smooth, dry and clean.

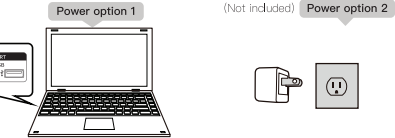


2. Tear off the plastic on the adhesive tape and stick the strip on the desk board anywhere you like.

05

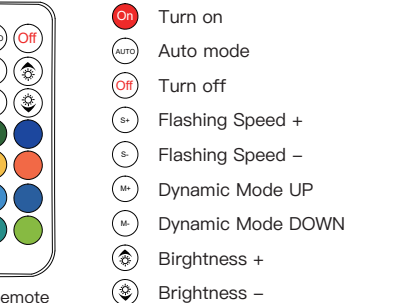


3. Stick to the installation surface.



4. Plug into the socket. Use the RF Remote to turn on and operate the lights.

06



RF Remote

**LED Color Buttons (12 Colors)**  
Static Red / Static Green / Static Blue / Static Pink / Static Yellow / Static Orange / Static Light Orange / Static Light Blue / Static Dark Blue / Static Purple / Static Onion green / Static Grass Green

**Dynamic Mode**  
Dynamic lighting will perfectly customise different styles of scene effects for you.

07

## RF Remote Control Manual

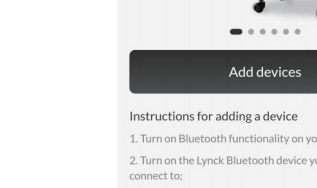
- On Turn on
- AUTO Auto mode
- Off Turn off
- S+ Flashing Speed +
- S- Flashing Speed -
- M+ Dynamic Mode UP
- M- Dynamic Mode DOWN
- Birghtness +
- Birghtness -

08

## Light Strip APP Control Manual

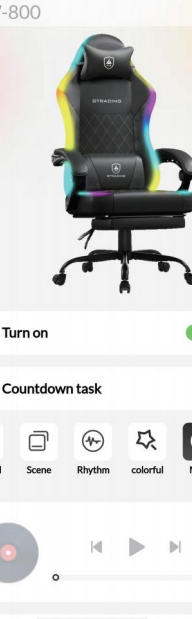
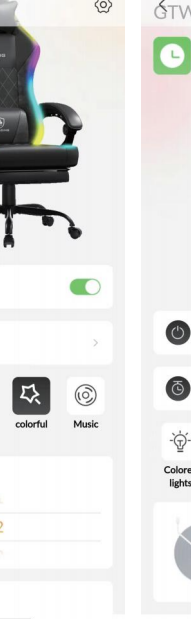
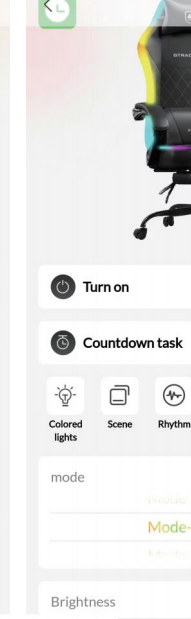
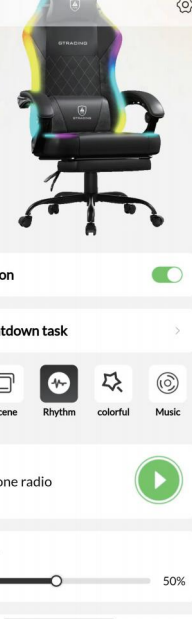
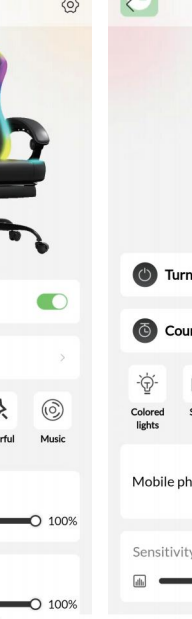
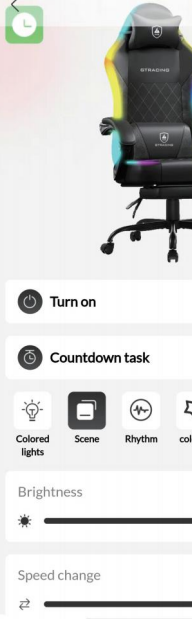
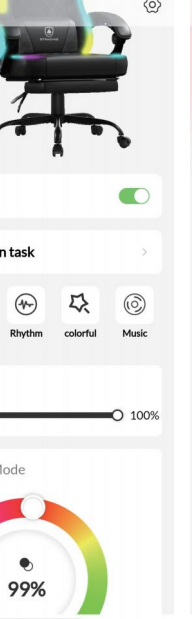
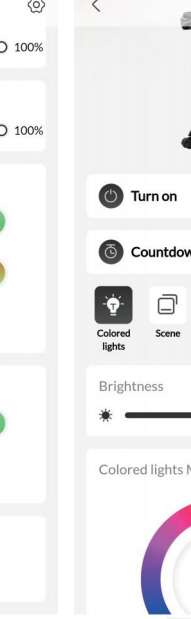
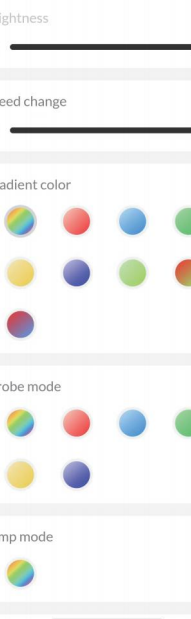
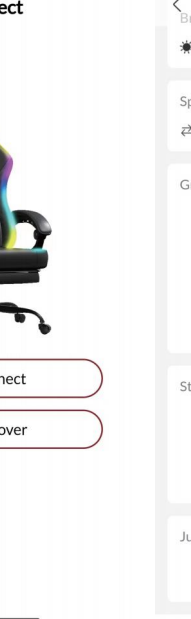
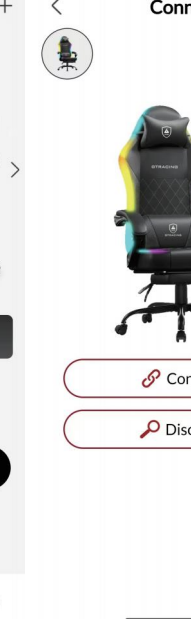
The light strip can be controlled through APP.

1. Get the Control APP



APP QR CODE

2. How to use the Control APP



This device complies with part 15 of the FCC Rules. Operation is subject to the following two conditions: (1) This device may not cause harmful interference, and (2) this device must accept any interference received, including interference that may cause undesired operation.

Any Changes or modifications not expressly approved by the party responsible for compliance could void the user's authority to operate the equipment.

**Note:** This equipment has been tested and found to comply with the limits for a Class B digital device, pursuant to part 15 of the FCC Rules. These limits are designed to provide reasonable protection against harmful interference in a residential installation. This equipment generates uses and can radiate radio frequency energy and, if not installed and used in accordance with the instructions, may cause harmful interference to radio communications. However, there is no guarantee that interference will not occur in a particular installation. If this equipment does cause harmful interference to radio or television reception, which can be determined by turning the equipment off and on, the user is encouraged to try to correct the interference by one or more of the following measures:

- Reorient or relocate the receiving antenna.
- Increase the separation between the equipment and receiver.
- Connect the equipment into an outlet on a circuit different from that to which the receiver is connected.
- Consult the dealer or an experienced radio/TV technician for help.

#### FCC Radiation Exposure statement

The device has been evaluatec to meel general RF exposure requirement. The device can be used in portable exposure condition without restriction.