

Light Strip and Bluetooth Speakers

User Manual

Thank you for choosing us. Before using your new product, please read these instructions to prevent any damage.

SAFETY WARNINGS AND GUIDELINES

When using electrical products, basic precautions should always be followed.

WARNING:These products may represent a possible shock or fire hazard if improperly installed or attached in any way.

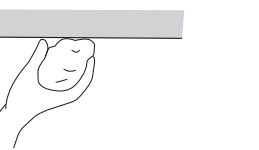
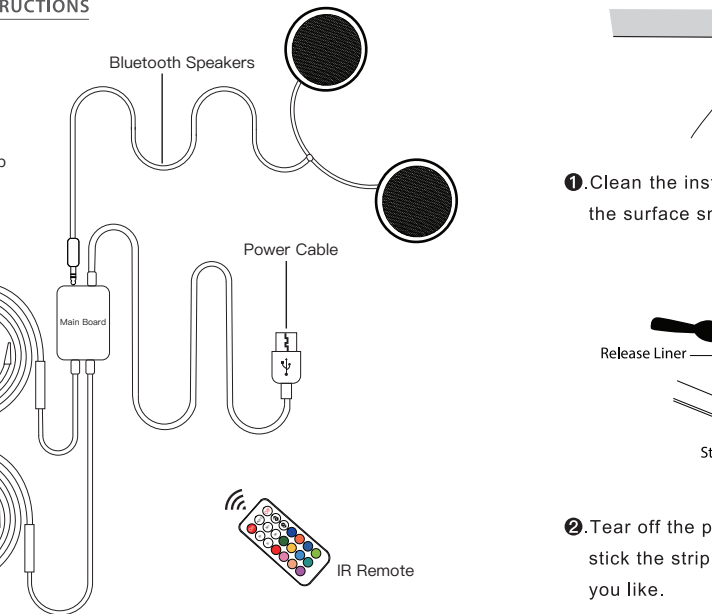
Products should be installed in accordance with this install guide, current electrical codes.

WARNING:

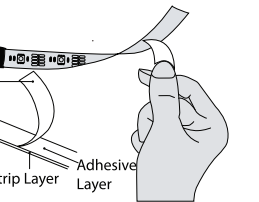
- Risk of electric shock
- Do not use product where directly exposed to water.
- This product is not a toy.
- Only use the power supply applied; using a different one can damage the product.
- For safety reasons, do not break down this product, and use only in the manner intended by the manufacturer.

DO NOT roll up when using. Please spread out the LED Strip Light before connecting to power supply.

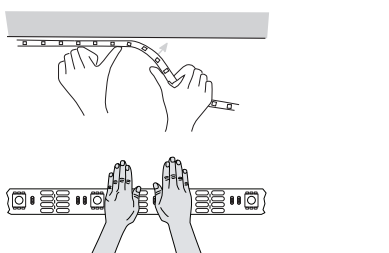
PRODUCT INSTRUCTIONS



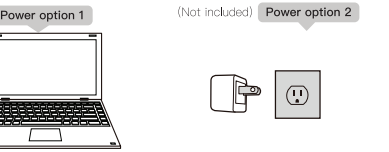
1. Clean the installation surface. Make sure the surface smooth, dry and clean.



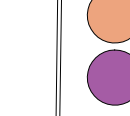
2. Tear off the plastic on the adhesive tape and stick the strip on the desk board anywhere you like.



3. Stick to the installation surface.

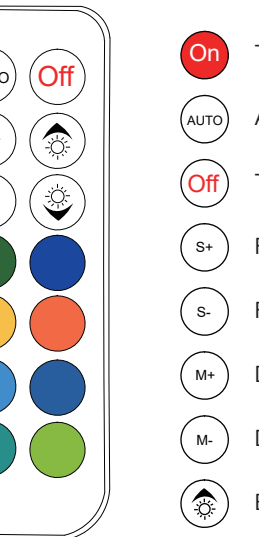


4. Plug into the socket. Use the IR Remote to turn on and operate the lights.



Power option 1 (Not included) Power option 2

IR Remote



On Turn on

AUTO Auto mode

Off Turn off

S+ Flashing Speed +

S- Flashing Speed -

M+ Dynamic Mode UP

M- Dynamic Mode DOWN

Birghtness +

Brightness -

LED Color Buttons (12 Colors)

Static Red / Static Green / Static Blue / Static Pink / Static Yellow / Static Orange / Static Light Orange / Static Light Blue / Static Dark Blue / Static Purple / Static Onion green / Static Grass Green

Dynamic Mode

Dynamic lighting will perfectly customise different styles of scene effects for you.

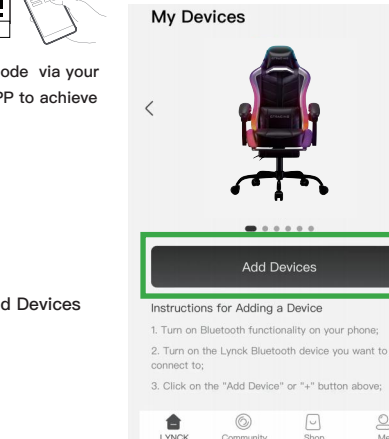
Manufacturer:Shenzhen Meiming Optoelectronics Co., Ltd.
address:3rd Floor, No. 31, Guangming Road, Shiyan Street,
Baoan District, Shenzhen

Power Input: USB 5V / 2A
Model: GTW-500-BLK
Wireless control distance: 10M(Without occlusion)



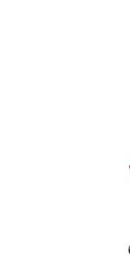
1. Scan the APP QR Code via your phone to download APP to achieve phone operation.

2. Our APP → Add Devices



Instructions for Adding a Device
1. Turn on Bluetooth functionality on your phone;
2. Turn on the Lynck Bluetooth device you want to connect to;
3. Click on the "Add Device" or "+" button above;

Searching for devices...



Please click on the device in the list above to connect.

3. Searching for devices...→ Select → Connect

GTW-500-BLK



Turn on Shut

Coloured lights

Music Coloured lights Scene colorful

4. Turn on the power. Now adjust the light unit to your preferences.

Coloured lights

Brightness

Coloured lights Mode

99%

99%

5.1. Lighting Scene And Speed Control

Coloured lights

Music Coloured lights Scene colorful

5.2. Lighting Color And Brightness Control

5.3. Lighting Dynamic Mode Control

This device complies with part 15 of the FCC Rules. Operation is subject to the following two conditions: (1) This device may not cause harmful interference, and (2) this device must accept any interference received, including interference that may cause undesired operation.

Any Changes or modifications not expressly approved by the party responsible for compliance could void the user's authority to operate the equipment.

Note: This equipment has been tested and found to comply with the limits for a Class B digital device, pursuant to part 15 of the FCC Rules. These limits are designed to provide reasonable protection against harmful interference in a residential installation. This equipment generates uses and can radiate radio frequency energy and, if not installed and used in accordance with the instructions, may cause harmful interference to radio communications. However, there is no guarantee that interference will not occur in a particular installation. If this equipment does cause harmful interference to radio or television reception, which can be determined by turning the equipment off and on, the user is encouraged to try to correct the interference by one or more of the following measures:

- Reorient or relocate the receiving antenna.
- Increase the separation between the equipment and receiver.
- Connect the equipment into an outlet on a circuit different from that to which the receiver is connected.
- Consult the dealer or an experienced radio/TV technician for help.

FCC Radiation Exposure statement

The device has been evaluatec to meel general RF exposure requirement. The device can be used in porlable exposure condition without restriction.