

# Car 7"MP5 Player

## Operation Manual



Reminder: All photos here are for reference only.  
Specifications are subject to the physical product.

# Preface:

In order to prevent injuries and fires, pls pay attention to the following instructions:

In order to prevent short circuit and so on, do not drop the metal objects in the device.

If there is smoke or peculiar smell the device, pls turn off the power at once.

Pls do not make the device falling or strong collision. In order to prevent device failure, pls observe the following note:

Pls do not install the device in the place of strong sunlight, high temperature, high humidity or dusty.

Pls replace the fuse which is the same specification. If you are using different specification of the fuse, may cause failure of the device.

In order to prevent short circuit, pls pull out the power wire when you replace the fuse.

In order to be able at any time to deal with road and traffic conditions change, pls lower the volume when driving.

Pls do not get the device wet when washing car, this may cause short circuit, then fire or other failure will be caused.

## Warning

1. Only connect the unit to a DC 12V power supply with negative grounding.
2. Never install the unit where the operation for safety driving is restrained.
3. Never use the video display function in the front when driving to prevent the violation of laws regulation and also to reduce the risk of traffic accident except using for rear view video camera.
4. Never expose the unit, amplifier, speakers to moisture or water to prevent electronic sparks or fires.
5. Pls don't change the fuse in the power cord without professional guidance; improper fuse may cause damage to this using unit or even cause fire.

## Installation

**The unit installs for security, pls install it refer to the following diagram description:**

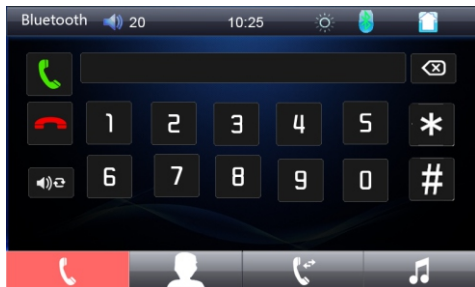
1. pls make the unit in proper place, connect the unit refer to the diagram, and test it works well or not.
2. Pls wrapped the connection line with insulation tape to ensure complete wiring after testing well.
3. Pls bend the hook of metal 1, and insert the metal to instrument panel then fixed it.
4. Put the unit into metal hook until it lock.

## General Features



- 7" inch digital TFT Touch Screen
- With TF card Slot, With USB 2.0 port.
- 1080P Video Format
- Support the Audio playback format of MP3/WMA/WAV/MKV/FLAC/OGG/APE.
- Support the Video playback format of RM/RMVB/DVD(VOB)/VCD(DAT)/MP1/MP2/DIVX/XVID/MP4/H263/H264/FLV/3GP/SWF/AVI/ASF/MJPEG etc;
- MOSFET amplifier: 60 watts X 4 max power output.
- FM Range: 87.5MHz~108.00MHz(Europe)
- With Remote Control
- Power-off with auto-memory store function under radio or TF/USB mode
- Clock Function
- Mute Function
- BT Function
- Bass & Treble,L&R channel stabilizer
- Aux In Function
- Rearview camera Function
- Video input Function
- MirrorLink

## Basic operation

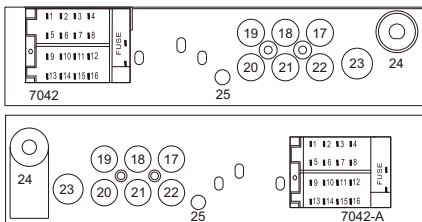
1. when use reversing rear view function.reversing video signal from the corresponding port input connection back line,when reversing will automatically switch to reversing visual state.
2. Audio/Vedio input(optional)  
Connect audio/Vedio lines,press Mode can select AUX-2 state.
3. bluetooth function only for the unit with bluetooth



Use the BT functin,please Use the,phone pairing,equipment numbei:xxx,for password:0000

After connecting the mobile,the bluetooth symbol turn green means the connection is ok,when calls come in will enter into the bluetooth interface automatically,press"  "answering the phone,press"  " hanging up the phone.

## Wire Diagram



1	Rear Right Speaker VIOLET	8	Rear Left Speaker GREEN/BLACK	15	High beam line (orange) ORNC	22	Video Input
2	Front Right Speaker GRAY	9	Parking Sensor Control wires(Pink)	16	Ground Wire(Black)	23	ANT
3	Front Left Speaker WHITE	10	Steering wheel key control line orange/Black ORNC	17	Rearview	24	GPS ANT
4	Rear Left Speaker GREEN	11	Power Antenna/Vignette Turn On(Blue) ORNC	18	Video Output1	25	Recorder input
5	Rear Right Speaker VIOLET/BLACK	12	+12V Accessory(Switch/Red)	19	Audio output R	26	
6	Front Right Speaker GRAY/BLACK	13	brake line (brown) ORNC	20	Audio output L	27	
7	Front Left Speaker WHITE/BLACK	14	+12V Constant Power Supply(Yellow)	21	Video Output2	28	

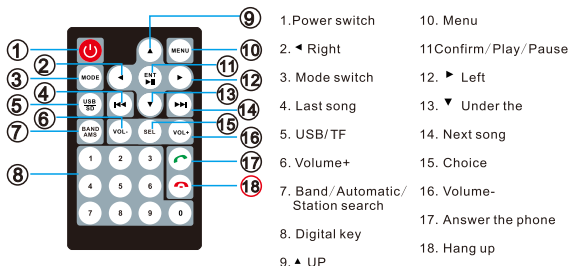


Pls check the speaker line carefully before installation.  
If any grounding or touching, pls connection again or the unit will be burned.

## Specification

SNR .....	65dB
Frequency response .....	20Hz-20KHz
Loudspeaker impedance .....	4Ω_8Ω
The maximum output power .....	4*60W
Tone Control.....	Bass+/-7dB(100Hz) Treble+/-7dB(100Hz)
FM	
FM frequency.....	87.5MHz~108MHz
Sensitivity.....	25dB
Selectivity.....	60dB
Separation.....	35dB

## Remote Control Description



## Description of the steering wheel learning function

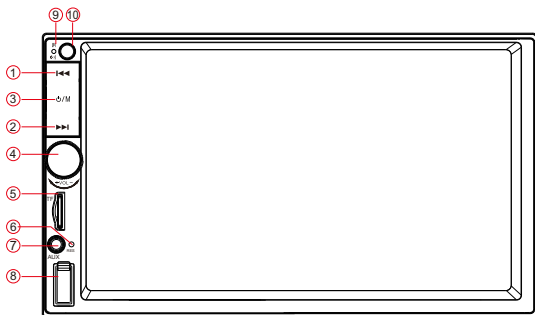


1) After connecting the wires, pls open the UI ,choose the button which you need, eg: ◀

2 After connecting the wires, Press ▶ button, it will show the UI which you need. Press " ⏻ " to enter into reset function

3) Press ⏻ button to prove setting sucessfully, then, Exit interface

# Front Panel



1		Last song
2		Press it long time to turn on/off Press it. Short time to enter into Switch mode.
3		Next Song
4	Knob Button	Adjust VOL+/VOL- ,Press it short timeto enter into BASS/TRE/BAL/EQ/LOUD/VOL /BRIGHT
5	TF	TF
6	AUX	AUX
7	RES	RES
8	USB	USB
9	MIC	MIC
10	IR	IR

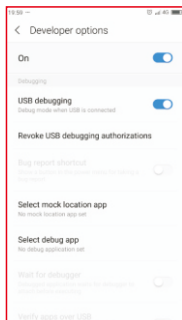


# MirrorLink Function instruction:

**Please don't playback video or mobile phone while driving**

Connect the mobile-phone to the unit with an USB cable,Prompt interface as follows:

## Mobile Phone UI



This product can provide  
MirrorLink upgrade services

## Unit Interface

Treatment status:  
About running processes status

---

USB debugging  
Connect USB debugging mode ☒

---

Withdrawal USB debug mode



## Mobile Phone Interface:

Allow USB debugging ?

The computer's RSA key fingerprint code as follows:  
xxxxxxxxxxxxxxxxxxxxxxxx

☐ Will allow the use of this computer for debugging

Cancel                      confirm

**HOME**

**FM**

**AUX**

**music**

**setting**

**movie**

**BT**

**Exporer**

**wheel**

**photo**

**CMLPlay**

## Multiple national languages



Chinese



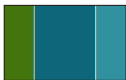
English



French



Polish



Italian



Russian



German



Czech



Japanese

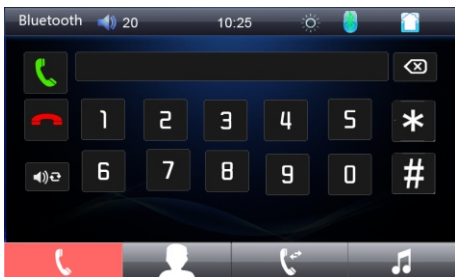


Spanish



Portuguese

# Car 7"MP5 Player



#### FCC Caution.

This device complies with part 15 of the FCC Rules. Operation is subject to the following two conditions:

- (1) This device may not cause harmful interference, and
- (2) this device must accept any interference received, including interference that may cause undesired operation.

Any Changes or modifications not expressly approved by the party responsible for compliance could void the user's authority to operate the equipment.

Note: This equipment has been tested and found to comply with the limits for a Class B digital device, pursuant to part 15 of the FCC Rules. These limits are designed to provide reasonable protection against harmful interference in a residential installation. This equipment generates uses and can radiate radio frequency energy and, if not installed and used in accordance with the instructions, may cause harmful interference to radio communications. However, there is no guarantee that interference will not occur in a particular installation. If this equipment does cause harmful interference to radio or television reception, which can be determined by turning the equipment off and on, the user is encouraged to try to correct the interference by one or more of the following measures:

- Reorient or relocate the receiving antenna.
- Increase the separation between the equipment and receiver.
- Connect the equipment into an outlet on a circuit different from that to which the receiver is connected.
- Consult the dealer or an experienced radio/TV technician for help.

\*RF warning for Mobile device:

This equipment complies with FCC radiation exposure limits set forth for an uncontrolled environment. This equipment should be installed and operated with minimum distance 20cm between the radiator & your body.