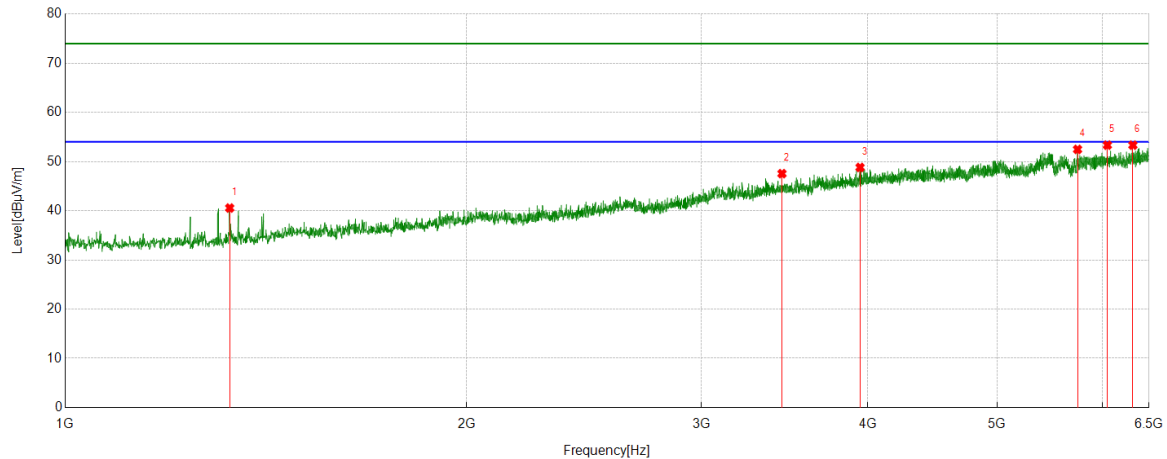


Test Mode	Channel	Polarization	Verdict
11ax HE40	5670	Vertical	PASS

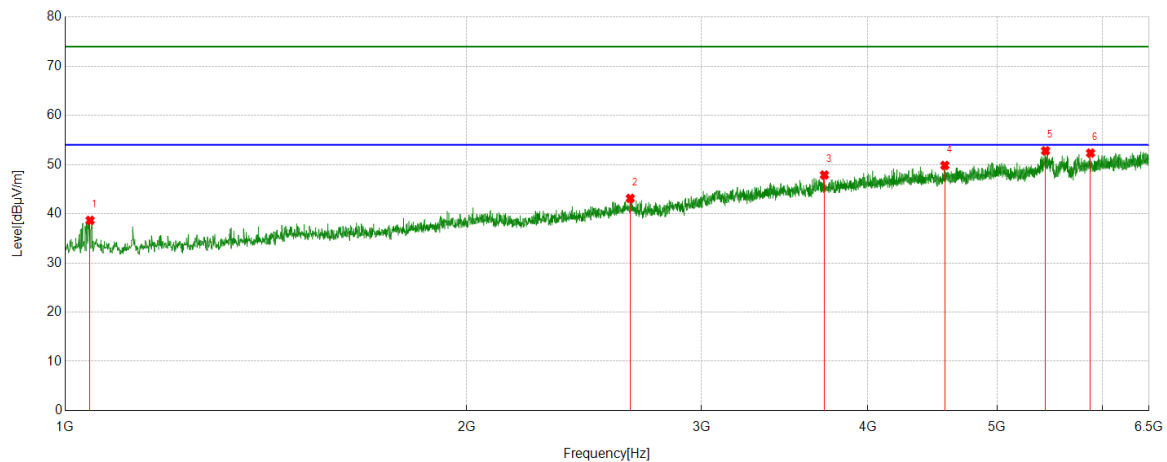


#### PK Result:

No.	Frequency [MHz]	Reading Level [dBuV]	Correct Factor [dB/m]	Result [dBuV/m]	Limit [dBuV/m]	Margin [dB]	Remark
1	1328.6661	42.40	-1.84	40.56	74.00	-33.44	Vertical
2	3448.4936	36.75	10.80	47.55	74.00	-26.45	Vertical
3	3946.3058	36.25	12.56	48.81	74.00	-25.19	Vertical
4	5745.0306	35.11	17.37	52.48	74.00	-21.52	Vertical
5	6048.9436	35.24	18.10	53.34	74.00	-20.66	Vertical
6	6321.2277	34.10	19.24	53.34	74.00	-20.66	Vertical

- Remark: 1. Measurement = Reading Level + Correct Factor.  
2. If Peak Result complies with AV limit, AV Result is deemed to comply with AV limit.  
3. Test setup: RBW: 1 MHz, VBW: 3 MHz, Sweep time: auto.  
4. Peak: Peak detector.  
5. AVG: VBW refer to section 6.2.  
6. For below 6.5GHz part, filter losses were only considered in the spurious frequency bands and the authorized band were not corrected for Band Reject Filter losses.  
The proper operation of the transmitter prior to adding the filter to the measurement chain.  
7. Only the worst case emission was recorded, if it complies with the limit, the other emissions deemed to comply with the limit.  
8. Since non-restricted band peak emissions are less than the average limit, they also comply with the -27 dBm/MHz (68.2 dBuV/m) limit.

Test Mode	Channel	Polarization	Verdict
11ax HE40	5710	Horizontal	PASS

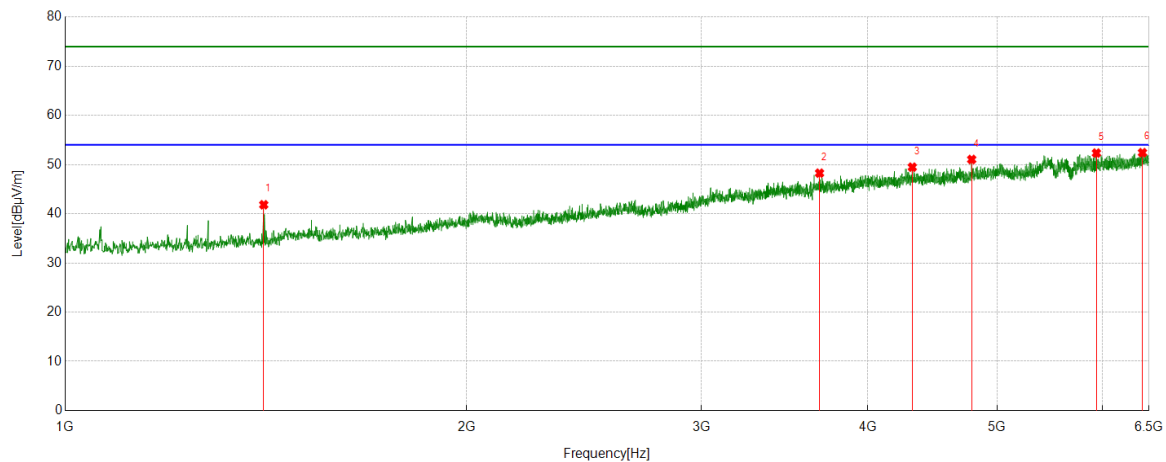


#### PK Result:

No.	Frequency [MHz]	Reading Level [dBuV]	Correct Factor [dB/m]	Result [dBuV/m]	Limit [dBuV/m]	Margin [dB]	Remark
1	1044.0055	40.40	-1.75	38.65	74.00	-35.35	Horizontal
2	2653.6442	36.19	6.94	43.13	74.00	-30.87	Horizontal
3	3710.4638	36.22	11.67	47.89	74.00	-26.11	Horizontal
4	4568.5711	35.71	14.12	49.83	74.00	-24.17	Horizontal
5	5436.3045	34.90	17.90	52.80	74.00	-21.20	Horizontal
6	5875.6720	34.43	17.91	52.34	74.00	-21.66	Horizontal

- Remark: 1. Measurement = Reading Level + Correct Factor.  
2. If Peak Result complies with AV limit, AV Result is deemed to comply with AV limit.  
3. Test setup: RBW: 1 MHz, VBW: 3 MHz, Sweep time: auto.  
4. Peak: Peak detector.  
5. AVG: VBW refer to section 6.2.  
6. For below 6.5GHz part, filter losses were only considered in the spurious frequency bands and the authorized band were not corrected for Band Reject Filter losses.  
The proper operation of the transmitter prior to adding the filter to the measurement chain.  
7. Only the worst case emission was recorded, if it complies with the limit, the other emissions deemed to comply with the limit.  
8. Since non-restricted band peak emissions are less than the average limit, they also comply with the -27 dBm/MHz (68.2 dBuV/m) limit.

Test Mode	Channel	Polarization	Verdict
11ax HE40	5710	Vertical	PASS

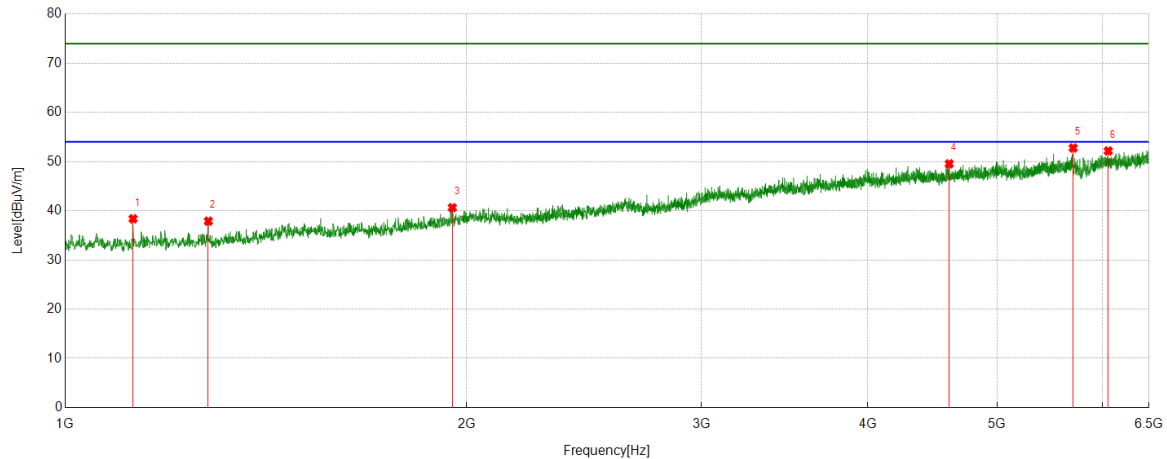


#### PK Result:

No.	Frequency	Reading Level	Correct Factor	Result	Limit	Margin	Remark
	[MHz]	[dBuV]	[dB/m]	[dBuV/m]	[dBuV/m]	[dB]	
1	1409.1136	42.94	-1.11	41.83	74.00	-32.17	Vertical
2	3679.5224	35.49	12.77	48.26	74.00	-25.74	Vertical
3	4318.9774	36.08	13.40	49.48	74.00	-24.52	Vertical
4	4785.1606	36.43	14.61	51.04	74.00	-22.96	Vertical
5	5935.4919	34.50	17.84	52.34	74.00	-21.66	Vertical
6	6426.4283	32.92	19.50	52.42	74.00	-21.58	Vertical

- Remark: 1. Measurement = Reading Level + Correct Factor.  
2. If Peak Result complies with AV limit, AV Result is deemed to comply with AV limit.  
3. Test setup: RBW: 1 MHz, VBW: 3 MHz, Sweep time: auto.  
4. Peak: Peak detector.  
5. AVG: VBW refer to section 6.2.  
6. For below 6.5GHz part, filter losses were only considered in the spurious frequency bands and the authorized band were not corrected for Band Reject Filter losses.  
The proper operation of the transmitter prior to adding the filter to the measurement chain.  
7. Only the worst case emission was recorded, if it complies with the limit, the other emissions deemed to comply with the limit.  
8. Since non-restricted band peak emissions are less than the average limit, they also comply with the -27 dBm/MHz (68.2 dBuV/m) limit.

Test Mode	Channel	Polarization	Verdict
11ax HE40	5755	Horizontal	PASS

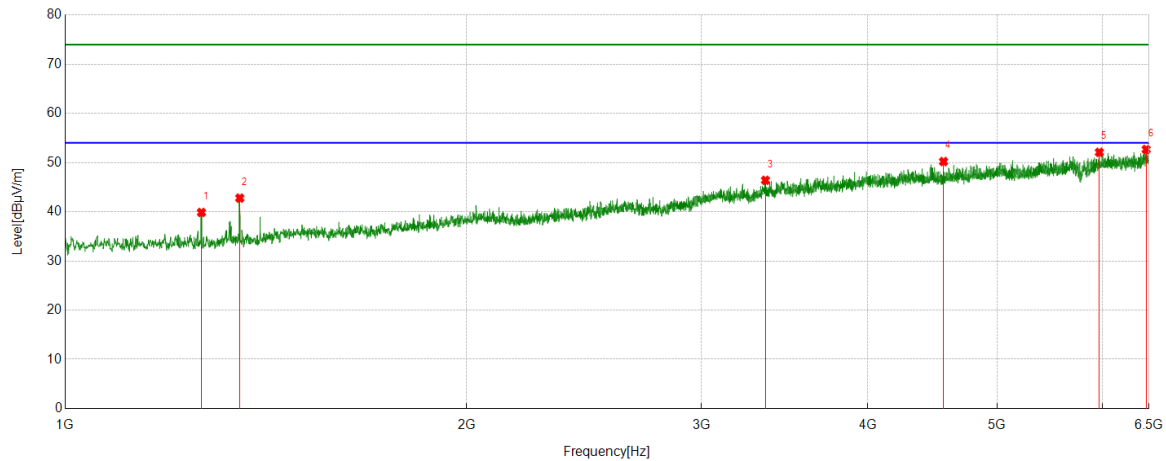


#### PK Result:

No.	Frequency [MHz]	Reading Level [dBuV]	Correct Factor [dB/m]	Result [dBuV/m]	Limit [dBuV/m]	Margin [dB]	Remark
1	1124.4531	40.80	-2.43	38.37	74.00	-35.63	Horizontal
2	1280.5351	39.99	-2.10	37.89	74.00	-36.11	Horizontal
3	1951.6190	37.53	3.10	40.63	74.00	-33.37	Horizontal
4	4603.6380	35.53	14.02	49.55	74.00	-24.45	Horizontal
5	5702.4003	36.02	16.75	52.77	74.00	-21.23	Horizontal
6	6057.8822	34.18	17.99	52.17	74.00	-21.83	Horizontal

- Remark: 1. Measurement = Reading Level + Correct Factor.  
2. If Peak Result complies with AV limit, AV Result is deemed to comply with AV limit.  
3. Test setup: RBW: 1 MHz, VBW: 3 MHz, Sweep time: auto.  
4. Peak: Peak detector.  
5. AVG: VBW refer to section 6.2.  
6. For below 6.5GHz part, filter losses were only considered in the spurious frequency bands and the authorized band were not corrected for Band Reject Filter losses.  
The proper operation of the transmitter prior to adding the filter to the measurement chain.  
7. Only the worst case emission was recorded, if it complies with the limit, the other emissions deemed to comply with the limit.  
8. Since non-restricted band peak emissions are less than the average limit, they also comply with the -27 dBm/MHz (68.2 dBuV/m) limit.

Test Mode	Channel	Polarization	Verdict
11ax HE40	5755	Vertical	PASS

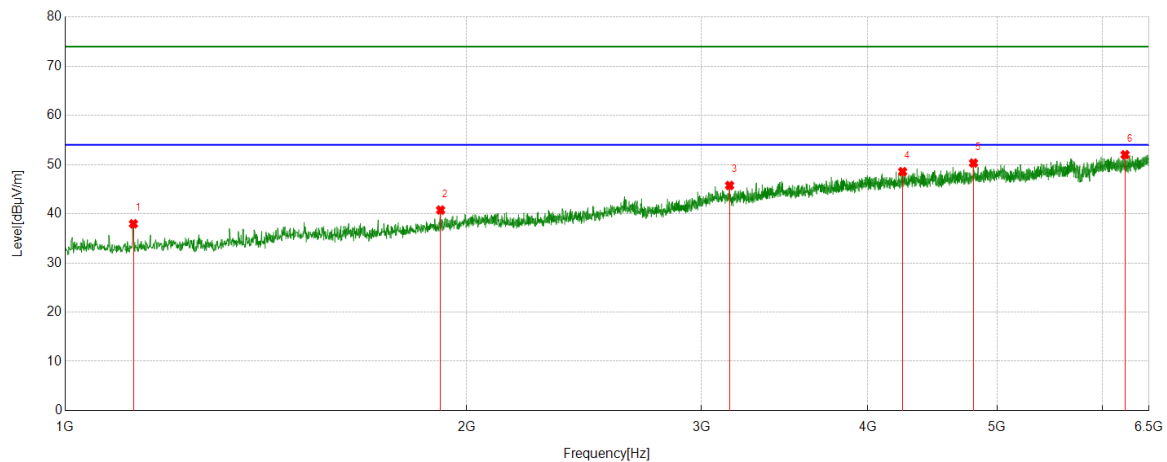


#### PK Result:

No.	Frequency [MHz]	Reading Level [dBuV]	Correct Factor [dB/m]	Result [dBuV/m]	Limit [dBuV/m]	Margin [dB]	Remark
1	1265.4082	41.94	-2.08	39.86	74.00	-34.14	Vertical
2	1352.0440	44.40	-1.62	42.78	74.00	-31.22	Vertical
3	3351.5439	35.99	10.41	46.40	74.00	-27.60	Vertical
4	4558.2573	36.71	13.50	50.21	74.00	-23.79	Vertical
5	5965.7457	34.69	17.40	52.09	74.00	-21.91	Vertical
6	6468.3710	32.75	19.92	52.67	74.00	-21.33	Vertical

- Remark: 1. Measurement = Reading Level + Correct Factor.  
2. If Peak Result complies with AV limit, AV Result is deemed to comply with AV limit.  
3. Test setup: RBW: 1 MHz, VBW: 3 MHz, Sweep time: auto.  
4. Peak: Peak detector.  
5. AVG: VBW refer to section 6.2.  
6. For below 6.5GHz part, filter losses were only considered in the spurious frequency bands and the authorized band were not corrected for Band Reject Filter losses.  
The proper operation of the transmitter prior to adding the filter to the measurement chain.  
7. Only the worst case emission was recorded, if it complies with the limit, the other emissions deemed to comply with the limit.  
8. Since non-restricted band peak emissions are less than the average limit, they also comply with the -27 dBm/MHz (68.2 dBuV/m) limit.

Test Mode	Channel	Polarization	Verdict
11ax HE40	5795	Horizontal	PASS

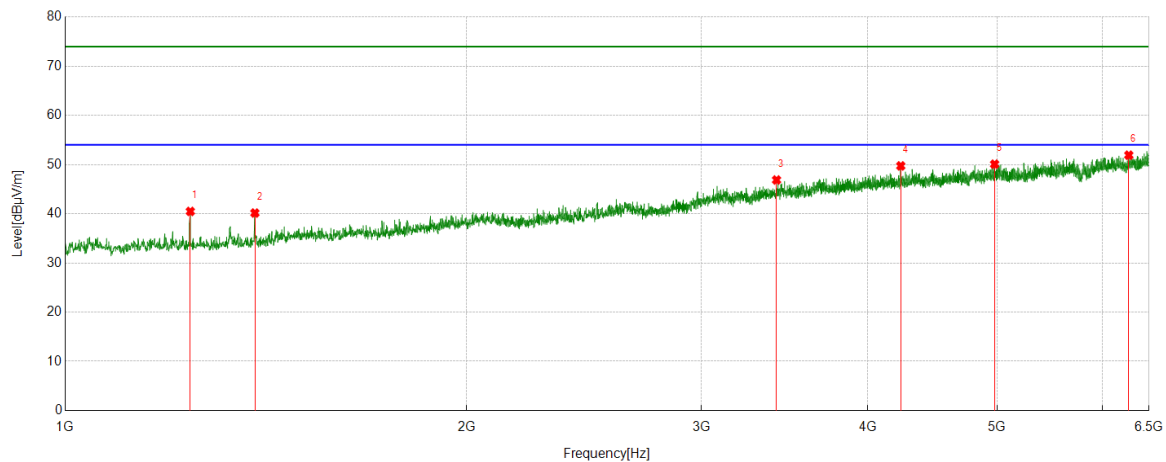


#### PK Result:

No.	Frequency [MHz]	Reading Level [dBuV]	Correct Factor [dB/m]	Result [dBuV/m]	Limit [dBuV/m]	Margin [dB]	Remark
1	1125.1406	40.38	-2.42	37.96	74.00	-36.04	Horizontal
2	1912.4266	38.36	2.39	40.75	74.00	-33.25	Horizontal
3	3150.0813	37.03	8.72	45.75	74.00	-28.25	Horizontal
4	4247.4684	35.40	13.16	48.56	74.00	-25.44	Horizontal
5	4800.2875	35.40	14.91	50.31	74.00	-23.69	Horizontal
6	6236.6546	34.00	18.01	52.01	74.00	-21.99	Horizontal

- Remark: 1. Measurement = Reading Level + Correct Factor.  
2. If Peak Result complies with AV limit, AV Result is deemed to comply with AV limit.  
3. Test setup: RBW: 1 MHz, VBW: 3 MHz, Sweep time: auto.  
4. Peak: Peak detector.  
5. AVG: VBW refer to section 6.2.  
6. For below 6.5GHz part, filter losses were only considered in the spurious frequency bands and the authorized band were not corrected for Band Reject Filter losses.  
The proper operation of the transmitter prior to adding the filter to the measurement chain.  
7. Only the worst case emission was recorded, if it complies with the limit, the other emissions deemed to comply with the limit.  
8. Since non-restricted band peak emissions are less than the average limit, they also comply with the -27 dBm/MHz (68.2 dBuV/m) limit.

Test Mode	Channel	Polarization	Verdict
11ax HE40	5795	Vertical	PASS



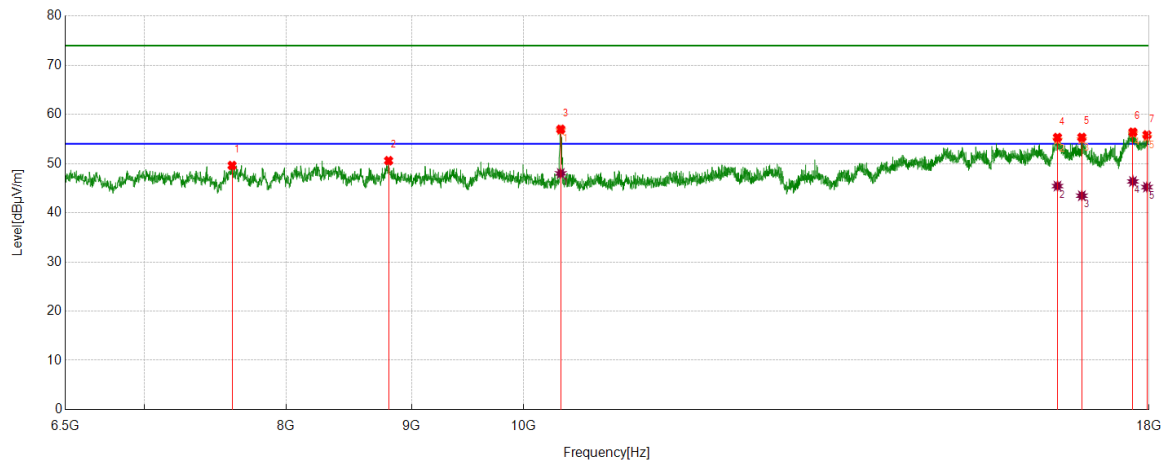
#### PK Result:

No.	Frequency [MHz]	Reading Level [dBuV]	Correct Factor [dB/m]	Result [dBuV/m]	Limit [dBuV/m]	Margin [dB]	Remark
1	1241.3427	42.38	-1.90	40.48	74.00	-33.52	Vertical
2	1387.7985	41.51	-1.36	40.15	74.00	-33.85	Vertical
3	3416.1770	36.58	10.29	46.87	74.00	-27.13	Vertical
4	4233.7167	36.60	13.13	49.73	74.00	-24.27	Vertical
5	4978.3723	35.25	14.83	50.08	74.00	-23.92	Vertical
6	6277.2222	33.51	18.40	51.91	74.00	-22.09	Vertical

- Remark: 1. Measurement = Reading Level + Correct Factor.  
2. If Peak Result complies with AV limit, AV Result is deemed to comply with AV limit.  
3. Test setup: RBW: 1 MHz, VBW: 3 MHz, Sweep time: auto.  
4. Peak: Peak detector.  
5. AVG: VBW refer to section 6.2.  
6. For below 6.5GHz part, filter losses were only considered in the spurious frequency bands and the authorized band were not corrected for Band Reject Filter losses.  
The proper operation of the transmitter prior to adding the filter to the measurement chain.  
7. Only the worst case emission was recorded, if it complies with the limit, the other emissions deemed to comply with the limit.  
8. Since non-restricted band peak emissions are less than the average limit, they also comply with the -27 dBm/MHz (68.2 dBuV/m) limit.

**PART 2: For 6.5GHz to 18GHz**

Test Mode	Channel	Polarization	Verdict
11a	5180	Horizontal	PASS


**PK Result:**

No.	Frequency [MHz]	Reading Level [dBuV]	Correct Factor [dB/m]	Result [dBuV/m]	Limit [dBuV/m]	Margin [dB]	Remark
1	7604.1380	44.58	5.03	49.61	74.00	-24.39	Horizontal
2	8808.9136	44.21	6.38	50.59	74.00	-23.41	Horizontal
3	10355.8570	50.25	6.72	56.97	74.00	-17.03	Horizontal
4	16516.3145	38.62	16.68	55.30	74.00	-18.70	Horizontal
5	16898.7373	38.70	16.63	55.33	74.00	-18.67	Horizontal
6	17729.7162	36.85	19.53	56.38	74.00	-17.62	Horizontal
7	17965.4957	35.30	20.53	55.83	74.00	-18.17	Horizontal

**AV Result:**

No.	Frequency [MHz]	Reading Level [dBuV]	Correct Factor [dB/m]	Result [dBuV/m]	Limit [dBuV/m]	Margin [dB]	Remark
1	10355.8570	41.28	6.72	48.00	54.00	-6.00	Horizontal
2	16516.3145	28.75	16.68	45.43	54.00	-8.57	Horizontal
3	16898.7373	26.84	16.63	43.47	54.00	-10.53	Horizontal
4	17729.7162	26.84	19.53	46.37	54.00	-7.63	Horizontal
5	17965.4957	24.69	20.53	45.22	54.00	-8.78	Horizontal

Remark: 1. Measurement = Reading Level + Correct Factor.

2. If Peak Result complies with AV limit, AV Result is deemed to comply with AV limit.

3. Test setup: RBW: 1 MHz, VBW: 3 MHz, Sweep time: auto.

4. Peak: Peak detector.

5. AVG: VBW refer to section 6.2.

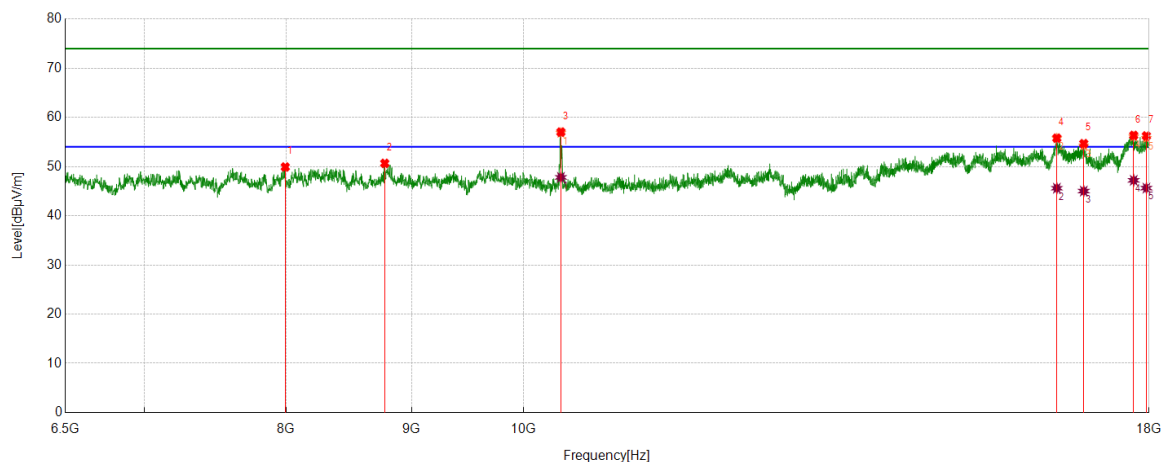
6. For above 6.5GHz part, filter losses were only considered in the spurious frequency bands and the authorized band were not corrected for HPF losses. The proper operation of the transmitter prior to adding the filter to the measurement chain.

7. Only the worst case emission was recorded, if it complies with the limit, the other emissions deemed to comply with the limit.

8. Since non-restricted band peak emissions are less than the average limit, they also comply with the -27 dBm/MHz (68.2 dBuV/m) limit.



Test Mode	Channel	Polarization	Verdict
11a	5180	Vertical	PASS



#### PK Result:

No.	Frequency [MHz]	Reading Level [dBuV]	Correct Factor [dB/m]	Result [dBuV/m]	Limit [dBuV/m]	Margin [dB]	Remark
1	7993.7492	44.27	5.65	49.92	74.00	-24.08	Vertical
2	8777.2847	44.45	6.21	50.66	74.00	-23.34	Vertical
3	10357.2947	50.30	6.72	57.02	74.00	-16.98	Vertical
4	16506.2508	39.13	16.65	55.78	74.00	-18.22	Vertical
5	16928.9286	37.89	16.78	54.67	74.00	-19.33	Vertical
6	17742.6553	36.78	19.56	56.34	74.00	-17.66	Vertical
7	17955.4319	35.73	20.50	56.23	74.00	-17.77	Vertical

#### AV Result:

No.	Frequency [MHz]	Reading Level [dBuV]	Correct Factor [dB/m]	Result [dBuV/m]	Limit [dBuV/m]	Margin [dB]	Remark
1	10357.2947	41.09	6.72	47.81	54.00	-6.19	Vertical
2	16506.2508	28.95	16.65	45.60	54.00	-8.40	Vertical
3	16928.9286	28.24	16.78	45.02	54.00	-8.98	Vertical
4	17742.6553	27.65	19.56	47.21	54.00	-6.79	Vertical
5	17955.4319	25.13	20.50	45.63	54.00	-8.37	Vertical

Remark: 1. Measurement = Reading Level + Correct Factor.

2. If Peak Result complies with AV limit, AV Result is deemed to comply with AV limit.

3. Test setup: RBW: 1 MHz, VBW: 3 MHz, Sweep time: auto.

4. Peak: Peak detector.

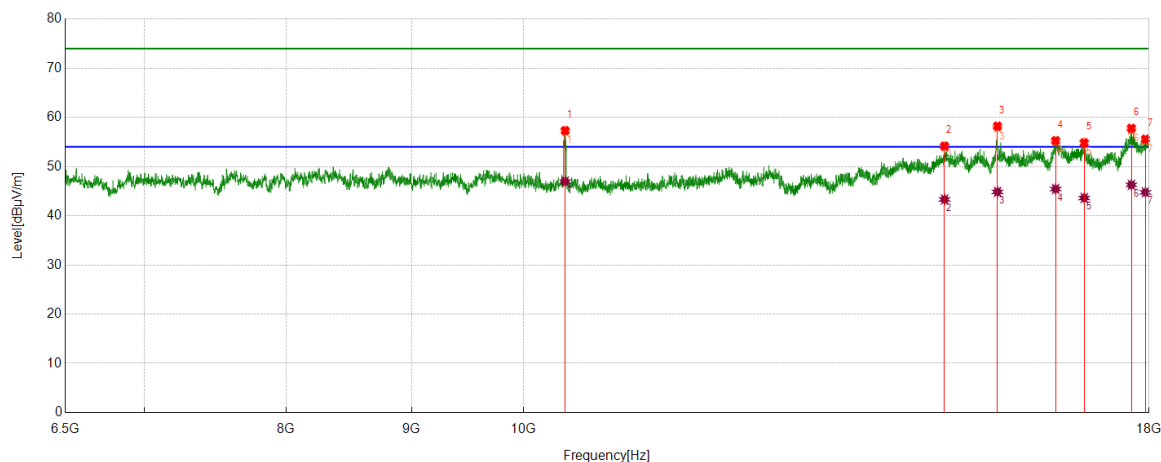
5. AVG: VBW refer to section 6.2.

6. For above 6.5GHz part, filter losses were only considered in the spurious frequency bands and the authorized band were not corrected for HPF losses. The proper operation of the transmitter prior to adding the filter to the measurement chain.

7. Only the worst case emission was recorded, if it complies with the limit, the other emissions deemed to comply with the limit.

8. Since non-restricted band peak emissions are less than the average limit, they also comply with the -27 dBm/MHz (68.2 dBuV/m) limit.

Test Mode	Channel	Polarization	Verdict
11a	5200	Horizontal	PASS


**PK Result:**

No.	Frequency [MHz]	Reading Level [dBuV]	Correct Factor [dB/m]	Result [dBuV/m]	Limit [dBuV/m]	Margin [dB]	Remark
1	10398.9874	50.49	6.82	57.31	74.00	-16.69	Horizontal
2	14852.9191	41.38	12.77	54.15	74.00	-19.85	Horizontal
3	15610.5763	44.75	13.48	58.23	74.00	-15.77	Horizontal
4	16487.5609	38.60	16.67	55.27	74.00	-18.73	Horizontal
5	16936.1170	38.03	16.80	54.83	74.00	-19.17	Horizontal
6	17703.8380	38.47	19.31	57.78	74.00	-16.22	Horizontal
7	17939.6175	35.24	20.33	55.57	74.00	-18.43	Horizontal

**AV Result:**

No.	Frequency [MHz]	Reading Level [dBuV]	Correct Factor [dB/m]	Result [dBuV/m]	Limit [dBuV/m]	Margin [dB]	Remark
1	10398.9874	40.15	6.82	46.97	54.00	-7.03	Horizontal
2	14852.9191	30.55	12.77	43.32	54.00	-10.68	Horizontal
3	15610.5763	31.38	13.48	44.86	54.00	-9.14	Horizontal
4	16487.5609	28.77	16.67	45.44	54.00	-8.56	Horizontal
5	16936.1170	26.82	16.80	43.62	54.00	-10.38	Horizontal
6	17703.8380	26.98	19.31	46.29	54.00	-7.71	Horizontal
7	17939.6175	24.44	20.33	44.77	54.00	-9.23	Horizontal

Remark: 1. Measurement = Reading Level + Correct Factor.

2. If Peak Result complies with AV limit, AV Result is deemed to comply with AV limit.

3. Test setup: RBW: 1 MHz, VBW: 3 MHz, Sweep time: auto.

4. Peak: Peak detector.

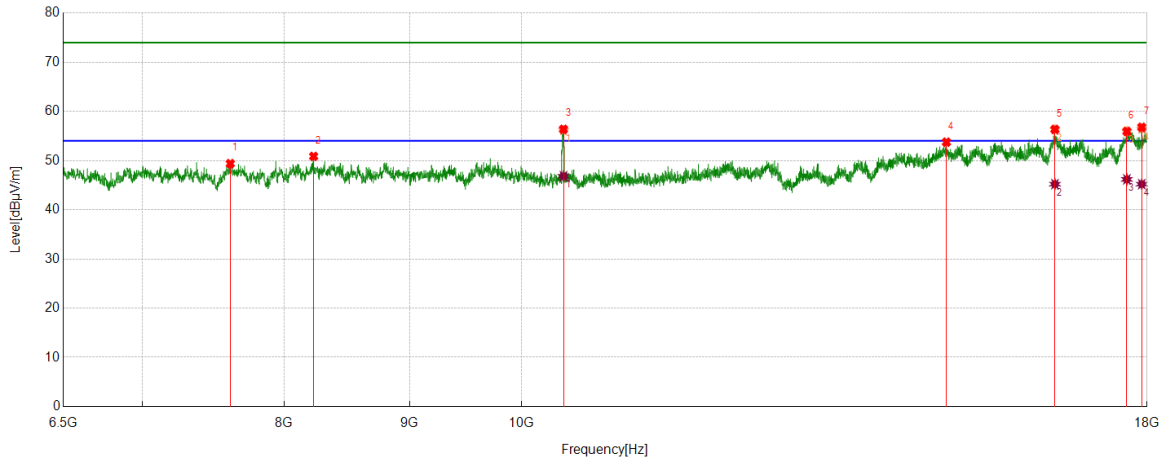
5. AVG: VBW refer to section 6.2.

6. For above 6.5GHz part, filter losses were only considered in the spurious frequency bands and the authorized band were not corrected for HPF losses. The proper operation of the transmitter prior to adding the filter to the measurement chain.

7. Only the worst case emission was recorded, if it complies with the limit, the other emissions deemed to comply with the limit.

8. Since non-restricted band peak emissions are less than the average limit, they also comply with the -27 dBm/MHz (68.2 dBuV/m) limit.

Test Mode	Channel	Polarization	Verdict
11a	5200	Vertical	PASS



#### PK Result:

No.	Frequency [MHz]	Reading Level [dBuV]	Correct Factor [dB/m]	Result [dBuV/m]	Limit [dBuV/m]	Margin [dB]	Remark
1	7605.5757	44.38	5.01	49.39	74.00	-24.61	Vertical
2	8225.2157	44.75	6.11	50.86	74.00	-23.14	Vertical
3	10401.8627	49.55	6.81	56.36	74.00	-17.64	Vertical
4	14907.5509	41.03	12.72	53.75	74.00	-20.25	Vertical
5	16507.6885	39.66	16.69	56.35	74.00	-17.65	Vertical
6	17662.1453	37.07	18.88	55.95	74.00	-18.05	Vertical
7	17910.8639	36.84	19.94	56.78	74.00	-17.22	Vertical

#### AV Result:

No.	Frequency [MHz]	Reading Level [dBuV]	Correct Factor [dB/m]	Result [dBuV/m]	Limit [dBuV/m]	Margin [dB]	Remark
1	10401.8627	40.01	6.81	46.82	54.00	-7.18	Vertical
2	16507.6885	28.52	16.69	45.21	54.00	-8.79	Vertical
3	17662.1453	27.30	18.88	46.18	54.00	-7.82	Vertical
4	17910.8639	25.27	19.94	45.21	54.00	-8.79	Vertical

Remark: 1. Measurement = Reading Level + Correct Factor.

2. If Peak Result complies with AV limit, AV Result is deemed to comply with AV limit.

3. Test setup: RBW: 1 MHz, VBW: 3 MHz, Sweep time: auto.

4. Peak: Peak detector.

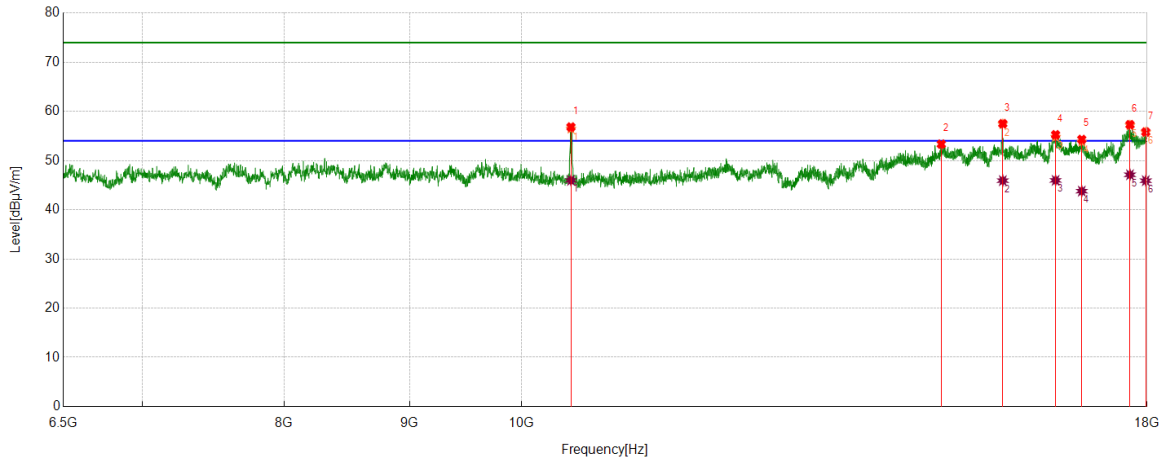
5. AVG: VBW refer to section 6.2.

6. For above 6.5GHz part, filter losses were only considered in the spurious frequency bands and the authorized band were not corrected for HPF losses. The proper operation of the transmitter prior to adding the filter to the measurement chain.

7. Only the worst case emission was recorded, if it complies with the limit, the other emissions deemed to comply with the limit.

8. Since non-restricted band peak emissions are less than the average limit, they also comply with the -27 dBm/MHz (68.2 dBuV/m) limit.

Test Mode	Channel	Polarization	Verdict
11a	5240	Horizontal	PASS



#### PK Result:

No.	Frequency [MHz]	Reading Level [dBuV]	Correct Factor [dB/m]	Result [dBuV/m]	Limit [dBuV/m]	Margin [dB]	Remark
1	10475.1844	49.93	6.89	56.82	74.00	-17.18	Horizontal
2	14835.6670	40.58	12.76	53.34	74.00	-20.66	Horizontal
3	15718.4023	43.24	14.26	57.50	74.00	-16.50	Horizontal
4	16517.7522	38.58	16.67	55.25	74.00	-18.75	Horizontal
5	16928.9286	37.52	16.78	54.30	74.00	-19.70	Horizontal
6	17713.9017	37.89	19.41	57.30	74.00	-16.70	Horizontal
7	17978.4348	35.16	20.65	55.81	74.00	-18.19	Horizontal

#### AV Result:

No.	Frequency [MHz]	Reading Level [dBuV]	Correct Factor [dB/m]	Result [dBuV/m]	Limit [dBuV/m]	Margin [dB]	Remark
1	10475.1844	39.09	6.89	45.98	54.00	-8.02	Horizontal
2	15718.4023	31.67	14.26	45.93	54.00	-8.07	Horizontal
3	16517.7522	29.31	16.67	45.98	54.00	-8.02	Horizontal
4	16928.9286	27.01	16.78	43.79	54.00	-10.21	Horizontal
5	17713.9017	27.71	19.41	47.12	54.00	-6.88	Horizontal
6	17978.4348	25.26	20.65	45.91	54.00	-8.09	Horizontal

Remark: 1. Measurement = Reading Level + Correct Factor.

2. If Peak Result complies with AV limit, AV Result is deemed to comply with AV limit.

3. Test setup: RBW: 1 MHz, VBW: 3 MHz, Sweep time: auto.

4. Peak: Peak detector.

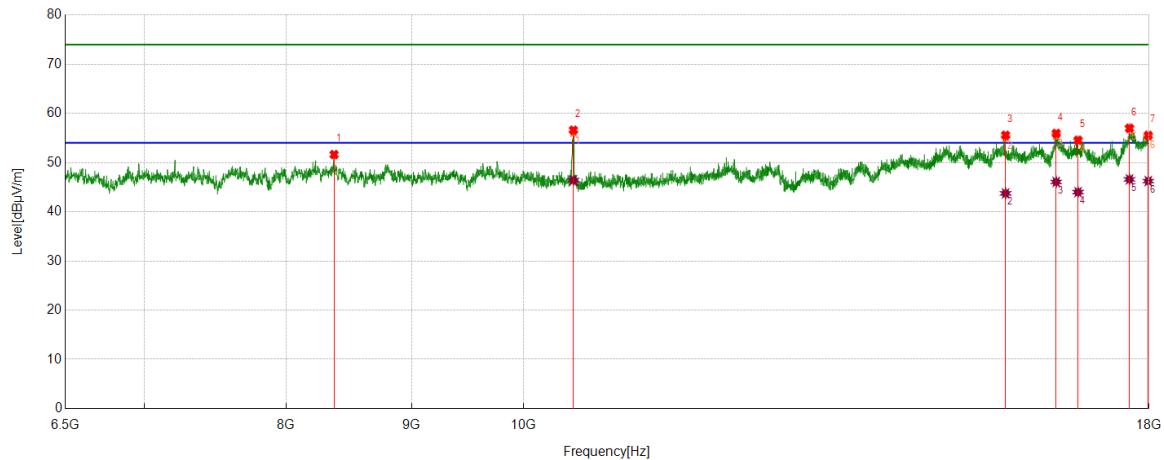
5. AVG: VBW refer to section 6.2.

6. For above 6.5GHz part, filter losses were only considered in the spurious frequency bands and the authorized band were not corrected for HPF losses. The proper operation of the transmitter prior to adding the filter to the measurement chain.

7. Only the worst case emission was recorded, if it complies with the limit, the other emissions deemed to comply with the limit.

8. Since non-restricted band peak emissions are less than the average limit, they also comply with the -27 dBm/MHz (68.2 dBuV/m) limit.

Test Mode	Channel	Polarization	Verdict
11a	5240	Vertical	PASS



#### PK Result:

No.	Frequency [MHz]	Reading Level [dBuV]	Correct Factor [dB/m]	Result [dBuV/m]	Limit [dBuV/m]	Margin [dB]	Remark
1	8368.9836	45.59	6.05	51.64	74.00	-22.36	Vertical
2	10479.4974	49.63	6.96	56.59	74.00	-17.41	Vertical
3	15729.9037	41.17	14.39	55.56	74.00	-18.44	Vertical
4	16496.1870	39.36	16.57	55.93	74.00	-18.07	Vertical
5	16838.3548	37.55	16.99	54.54	74.00	-19.46	Vertical
6	17672.2090	38.04	18.94	56.98	74.00	-17.02	Vertical
7	17987.0609	34.89	20.64	55.53	74.00	-18.47	Vertical

#### AV Result:

No.	Frequency [MHz]	Reading Level [dBuV]	Correct Factor [dB/m]	Result [dBuV/m]	Limit [dBuV/m]	Margin [dB]	Remark
1	10479.4974	39.46	6.96	46.42	54.00	-7.58	Vertical
2	15729.9037	29.35	14.39	43.74	54.00	-10.26	Vertical
3	16496.1870	29.50	16.57	46.07	54.00	-7.93	Vertical
4	16838.3548	27.00	16.99	43.99	54.00	-10.01	Vertical
5	17672.2090	27.65	18.94	46.59	54.00	-7.41	Vertical
6	17987.0609	25.60	20.64	46.24	54.00	-7.76	Vertical

Remark: 1. Measurement = Reading Level + Correct Factor.

2. If Peak Result complies with AV limit, AV Result is deemed to comply with AV limit.

3. Test setup: RBW: 1 MHz, VBW: 3 MHz, Sweep time: auto.

4. Peak: Peak detector.

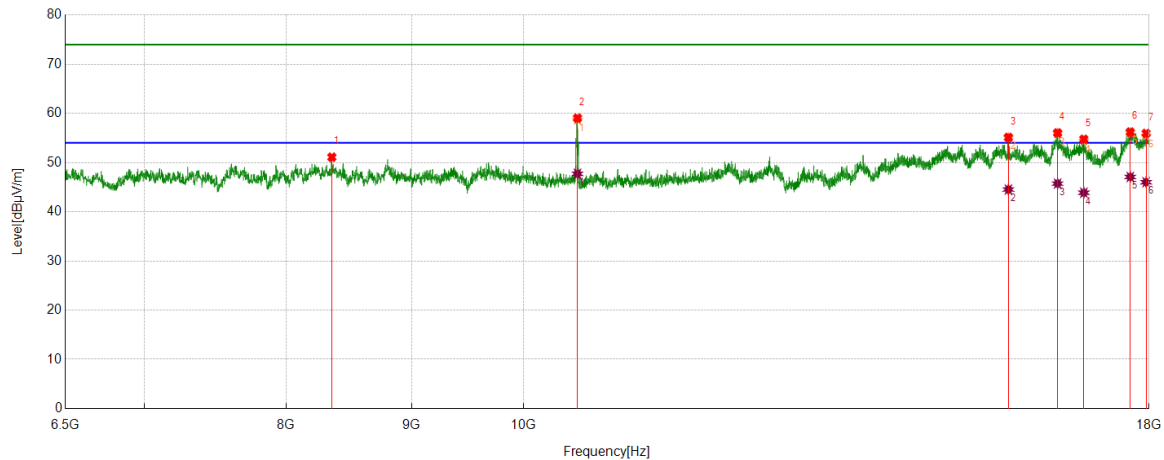
5. AVG: VBW refer to section 6.2.

6. For above 6.5GHz part, filter losses were only considered in the spurious frequency bands and the authorized band were not corrected for HPF losses. The proper operation of the transmitter prior to adding the filter to the measurement chain.

7. Only the worst case emission was recorded, if it complies with the limit, the other emissions deemed to comply with the limit.

8. Since non-restricted band peak emissions are less than the average limit, they also comply with the -27 dBm/MHz (68.2 dBuV/m) limit.

Test Mode	Channel	Polarization	Verdict
11a	5260	Horizontal	PASS



#### PK Result:

No.	Frequency [MHz]	Reading Level [dBuV]	Correct Factor [dB/m]	Result [dBuV/m]	Limit [dBuV/m]	Margin [dB]	Remark
1	8351.7315	45.05	6.05	51.10	74.00	-22.90	Horizontal
2	10519.7525	52.00	7.04	59.04	74.00	-14.96	Horizontal
3	15771.5964	40.65	14.47	55.12	74.00	-18.88	Horizontal
4	16517.7522	39.37	16.67	56.04	74.00	-17.96	Horizontal
5	16930.3663	37.97	16.77	54.74	74.00	-19.26	Horizontal
6	17685.1481	37.14	19.07	56.21	74.00	-17.79	Horizontal
7	17951.1189	35.49	20.45	55.94	74.00	-18.06	Horizontal

#### AV Result:

No.	Frequency [MHz]	Reading Level [dBuV]	Correct Factor [dB/m]	Result [dBuV/m]	Limit [dBuV/m]	Margin [dB]	Remark
1	10519.7525	40.68	7.04	47.72	54.00	-6.28	Horizontal
2	15771.5964	30.05	14.47	44.52	54.00	-9.48	Horizontal
3	16517.7522	29.06	16.67	45.73	54.00	-8.27	Horizontal
4	16930.3663	27.10	16.77	43.87	54.00	-10.13	Horizontal
5	17685.1481	28.01	19.07	47.08	54.00	-6.92	Horizontal
6	17951.1189	25.56	20.45	46.01	54.00	-7.99	Horizontal

Remark: 1. Measurement = Reading Level + Correct Factor.

2. If Peak Result complies with AV limit, AV Result is deemed to comply with AV limit.

3. Test setup: RBW: 1 MHz, VBW: 3 MHz, Sweep time: auto.

4. Peak: Peak detector.

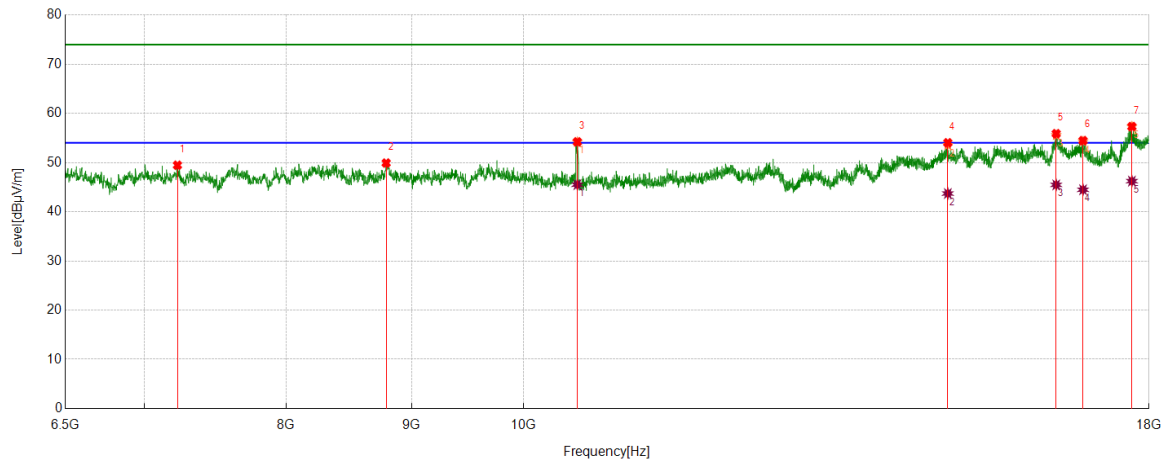
5. AVG: VBW refer to section 6.2.

6. For above 6.5GHz part, filter losses were only considered in the spurious frequency bands and the authorized band were not corrected for HPF losses. The proper operation of the transmitter prior to adding the filter to the measurement chain.

7. Only the worst case emission was recorded, if it complies with the limit, the other emissions deemed to comply with the limit.

8. Since non-restricted band peak emissions are less than the average limit, they also comply with the -27 dBm/MHz (68.2 dBuV/m) limit.

Test Mode	Channel	Polarization	Verdict
11a	5260	Vertical	PASS



#### PK Result:

No.	Frequency [MHz]	Reading Level [dBuV]	Correct Factor [dB/m]	Result [dBuV/m]	Limit [dBuV/m]	Margin [dB]	Remark
1	7223.1529	45.34	4.13	49.47	74.00	-24.53	Vertical
2	8788.7861	43.60	6.31	49.91	74.00	-24.09	Vertical
3	10518.3148	47.17	7.04	54.21	74.00	-19.79	Vertical
4	14898.9249	41.29	12.74	54.03	74.00	-19.97	Vertical
5	16496.1870	39.31	16.57	55.88	74.00	-18.12	Vertical
6	16917.4272	37.72	16.75	54.47	74.00	-19.53	Vertical
7	17712.4641	37.94	19.38	57.32	74.00	-16.68	Vertical

#### AV Result:

No.	Frequency [MHz]	Reading Level [dBuV]	Correct Factor [dB/m]	Result [dBuV/m]	Limit [dBuV/m]	Margin [dB]	Remark
1	10518.3148	38.47	7.04	45.51	54.00	-8.49	Vertical
2	14898.9249	30.97	12.74	43.71	54.00	-10.29	Vertical
3	16496.1870	28.90	16.57	45.47	54.00	-8.53	Vertical
4	16917.4272	27.73	16.75	44.48	54.00	-9.52	Vertical
5	17712.4641	26.85	19.38	46.23	54.00	-7.77	Vertical

Remark: 1. Measurement = Reading Level + Correct Factor.

2. If Peak Result complies with AV limit, AV Result is deemed to comply with AV limit.

3. Test setup: RBW: 1 MHz, VBW: 3 MHz, Sweep time: auto.

4. Peak: Peak detector.

5. AVG: VBW refer to section 6.2.

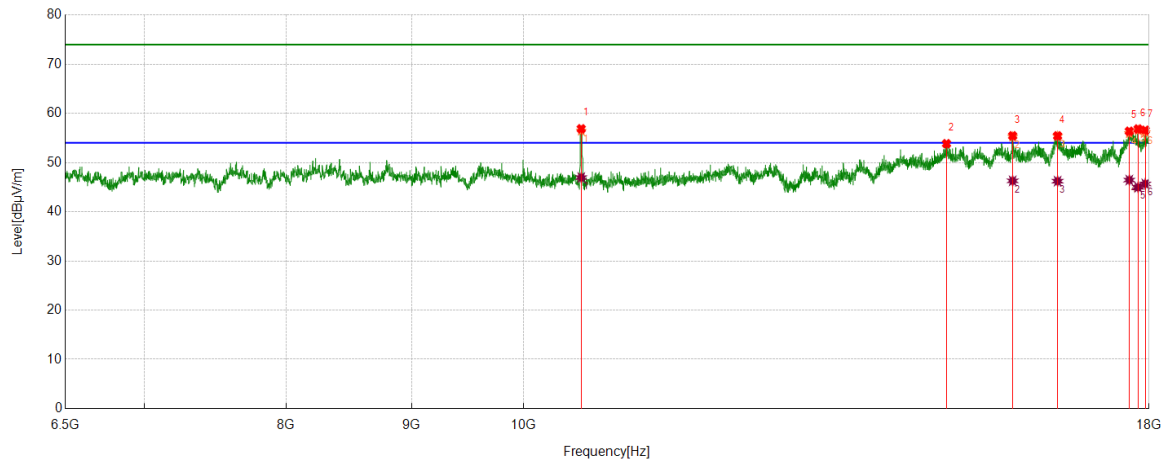
6. For above 6.5GHz part, filter losses were only considered in the spurious frequency bands and the authorized band were not corrected for HPF losses. The proper operation of the transmitter prior to adding the filter to the measurement chain.

7. Only the worst case emission was recorded, if it complies with the limit, the other emissions deemed to comply with the limit.

8. Since non-restricted band peak emissions are less than the average limit, they also comply with the -27 dBm/MHz (68.2 dBuV/m) limit.



Test Mode	Channel	Polarization	Verdict
11a	5280	Horizontal	PASS



#### PK Result:

No.	Frequency [MHz]	Reading Level [dBuV]	Correct Factor [dB/m]	Result [dBuV/m]	Limit [dBuV/m]	Margin [dB]	Remark
1	10557.1321	50.09	6.78	56.87	74.00	-17.13	Horizontal
2	14880.2350	41.14	12.70	53.84	74.00	-20.16	Horizontal
3	15834.8544	40.76	14.68	55.44	74.00	-18.56	Horizontal
4	16517.7522	38.76	16.67	55.43	74.00	-18.57	Horizontal
5	17669.3337	37.45	18.92	56.37	74.00	-17.63	Horizontal
6	17815.9770	37.15	19.68	56.83	74.00	-17.17	Horizontal
7	17936.7421	36.29	20.28	56.57	74.00	-17.43	Horizontal

#### AV Result:

No.	Frequency [MHz]	Reading Level [dBuV]	Correct Factor [dB/m]	Result [dBuV/m]	Limit [dBuV/m]	Margin [dB]	Remark
1	10557.1321	40.17	6.78	46.95	54.00	-7.05	Horizontal
2	15834.8544	31.61	14.68	46.29	54.00	-7.71	Horizontal
3	16517.7522	29.55	16.67	46.22	54.00	-7.78	Horizontal
4	17669.3337	27.53	18.92	46.45	54.00	-7.55	Horizontal
5	17815.9770	25.30	19.68	44.98	54.00	-9.02	Horizontal
6	17936.7421	25.39	20.28	45.67	54.00	-8.33	Horizontal

Remark: 1. Measurement = Reading Level + Correct Factor.

2. If Peak Result complies with AV limit, AV Result is deemed to comply with AV limit.

3. Test setup: RBW: 1 MHz, VBW: 3 MHz, Sweep time: auto.

4. Peak: Peak detector.

5. AVG: VBW refer to section 6.2.

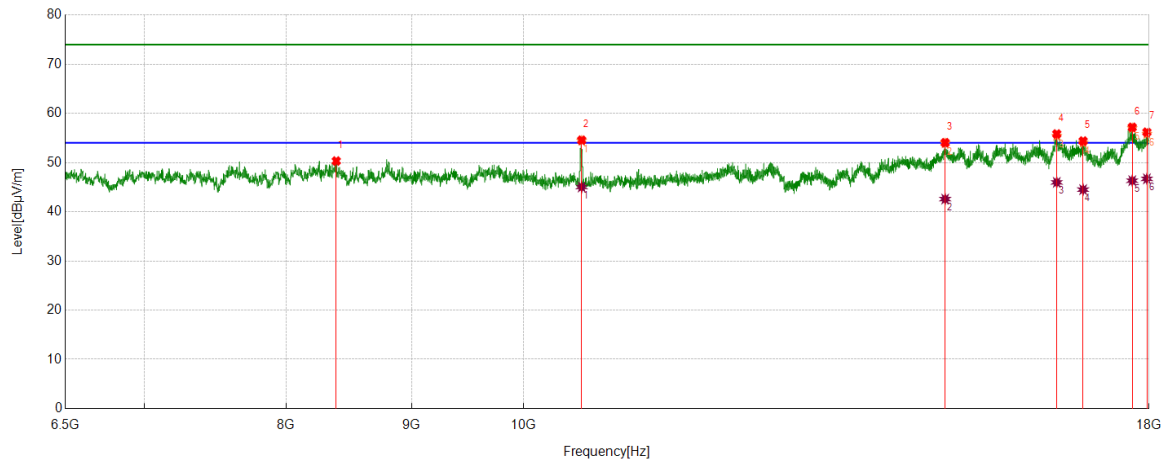
6. For above 6.5GHz part, filter losses were only considered in the spurious frequency bands and the authorized band were not corrected for HPF losses. The proper operation of the transmitter prior to adding the filter to the measurement chain.

7. Only the worst case emission was recorded, if it complies with the limit, the other emissions deemed to comply with the limit.

8. Since non-restricted band peak emissions are less than the average limit, they also comply with the -27 dBm/MHz (68.2 dBuV/m) limit.



Test Mode	Channel	Polarization	Verdict
11a	5280	Vertical	PASS



#### PK Result:

No.	Frequency [MHz]	Reading Level [dBuV]	Correct Factor [dB/m]	Result [dBuV/m]	Limit [dBuV/m]	Margin [dB]	Remark
1	8386.2358	44.05	6.27	50.32	74.00	-23.68	Vertical
2	10561.4452	47.78	6.77	54.55	74.00	-19.45	Vertical
3	14861.5452	41.30	12.75	54.05	74.00	-19.95	Vertical
4	16504.8131	39.20	16.62	55.82	74.00	-18.18	Vertical
5	16918.8649	37.60	16.78	54.38	74.00	-19.62	Vertical
6	17718.2148	37.71	19.46	57.17	74.00	-16.83	Vertical
7	17964.0580	35.64	20.54	56.18	74.00	-17.82	Vertical

#### AV Result:

No.	Frequency [MHz]	Reading Level [dBuV]	Correct Factor [dB/m]	Result [dBuV/m]	Limit [dBuV/m]	Margin [dB]	Remark
1	10561.4452	38.27	6.77	45.04	54.00	-8.96	Vertical
2	14861.5452	29.83	12.75	42.58	54.00	-11.42	Vertical
3	16504.8131	29.36	16.62	45.98	54.00	-8.02	Vertical
4	16918.8649	27.72	16.78	44.50	54.00	-9.50	Vertical
5	17718.2148	26.86	19.46	46.32	54.00	-7.68	Vertical
6	17964.0580	26.16	20.54	46.70	54.00	-7.30	Vertical

Remark: 1. Measurement = Reading Level + Correct Factor.

2. If Peak Result complies with AV limit, AV Result is deemed to comply with AV limit.

3. Test setup: RBW: 1 MHz, VBW: 3 MHz, Sweep time: auto.

4. Peak: Peak detector.

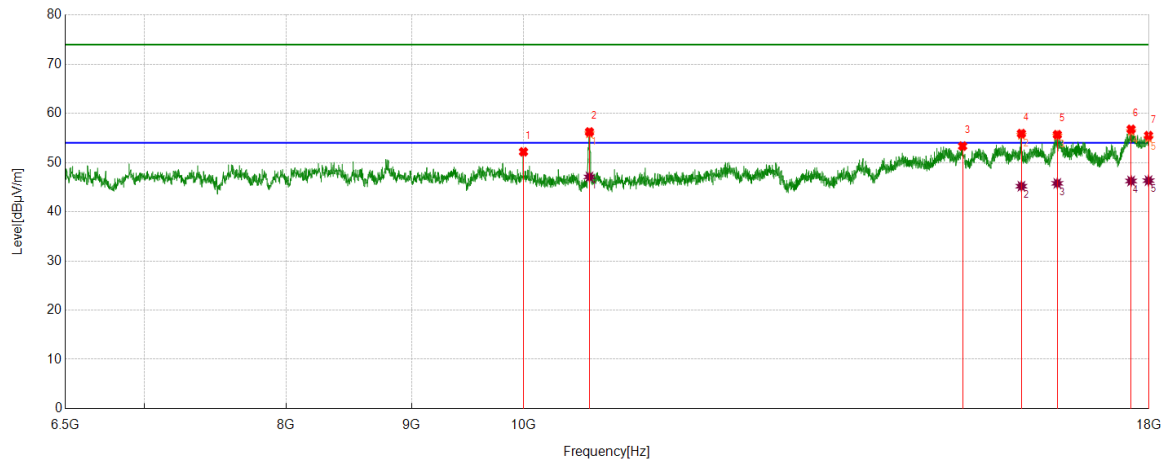
5. AVG: VBW refer to section 6.2.

6. For above 6.5GHz part, filter losses were only considered in the spurious frequency bands and the authorized band were not corrected for HPF losses. The proper operation of the transmitter prior to adding the filter to the measurement chain.

7. Only the worst case emission was recorded, if it complies with the limit, the other emissions deemed to comply with the limit.

8. Since non-restricted band peak emissions are less than the average limit, they also comply with the -27 dBm/MHz (68.2 dBuV/m) limit.

Test Mode	Channel	Polarization	Verdict
11a	5320	Horizontal	PASS



#### PK Result:

No.	Frequency [MHz]	Reading Level [dBuV]	Correct Factor [dB/m]	Result [dBuV/m]	Limit [dBuV/m]	Margin [dB]	Remark
1	9999.3124	45.69	6.50	52.19	74.00	-21.81	Horizontal
2	10639.0799	49.51	6.72	56.23	74.00	-17.77	Horizontal
3	15107.3884	40.16	13.19	53.35	74.00	-20.65	Horizontal
4	15965.6832	41.06	14.84	55.90	74.00	-18.10	Horizontal
5	16513.4392	38.97	16.71	55.68	74.00	-18.32	Horizontal
6	17699.5249	37.50	19.27	56.77	74.00	-17.23	Horizontal
7	17991.3739	34.87	20.62	55.49	74.00	-18.51	Horizontal

#### AV Result:

No.	Frequency [MHz]	Reading Level [dBuV]	Correct Factor [dB/m]	Result [dBuV/m]	Limit [dBuV/m]	Margin [dB]	Remark
1	10639.0799	40.37	6.72	47.09	54.00	-6.91	Horizontal
2	15965.6832	30.36	14.84	45.20	54.00	-8.80	Horizontal
3	16513.4392	29.07	16.71	45.78	54.00	-8.22	Horizontal
4	17699.5249	26.99	19.27	46.26	54.00	-7.74	Horizontal
5	17991.3739	25.71	20.62	46.33	54.00	-7.67	Horizontal

Remark: 1. Measurement = Reading Level + Correct Factor.

2. If Peak Result complies with AV limit, AV Result is deemed to comply with AV limit.

3. Test setup: RBW: 1 MHz, VBW: 3 MHz, Sweep time: auto.

4. Peak: Peak detector.

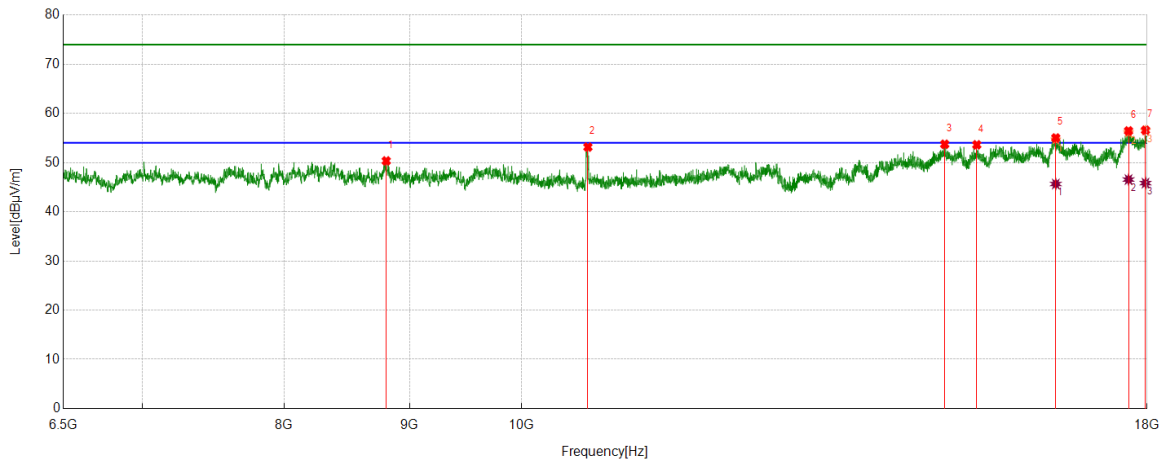
5. AVG: VBW refer to section 6.2.

6. For above 6.5GHz part, filter losses were only considered in the spurious frequency bands and the authorized band were not corrected for HPF losses. The proper operation of the transmitter prior to adding the filter to the measurement chain.

7. Only the worst case emission was recorded, if it complies with the limit, the other emissions deemed to comply with the limit.

8. Since non-restricted band peak emissions are less than the average limit, they also comply with the -27 dBm/MHz (68.2 dBuV/m) limit.

Test Mode	Channel	Polarization	Verdict
11a	5320	Vertical	PASS



#### PK Result:

No.	Frequency [MHz]	Reading Level [dBuV]	Correct Factor [dB/m]	Result [dBuV/m]	Limit [dBuV/m]	Margin [dB]	Remark
1	8806.0383	43.98	6.36	50.34	74.00	-23.66	Vertical
2	10643.3929	46.44	6.71	53.15	74.00	-20.85	Vertical
3	14883.1104	41.01	12.72	53.73	74.00	-20.27	Vertical
4	15338.8549	40.20	13.41	53.61	74.00	-20.39	Vertical
5	16520.6276	38.38	16.63	55.01	74.00	-18.99	Vertical
6	17689.4612	37.31	19.13	56.44	74.00	-17.56	Vertical
7	17974.1218	36.00	20.58	56.58	74.00	-17.42	Vertical

#### AV Result:

No.	Frequency [MHz]	Reading Level [dBuV]	Correct Factor [dB/m]	Result [dBuV/m]	Limit [dBuV/m]	Margin [dB]	Remark
1	16520.6276	29.02	16.63	45.65	54.00	-8.35	Vertical
2	17689.4612	27.42	19.13	46.55	54.00	-7.45	Vertical
3	17974.1218	25.25	20.58	45.83	54.00	-8.17	Vertical

Remark: 1. Measurement = Reading Level + Correct Factor.

2. If Peak Result complies with AV limit, AV Result is deemed to comply with AV limit.

3. Test setup: RBW: 1 MHz, VBW: 3 MHz, Sweep time: auto.

4. Peak: Peak detector.

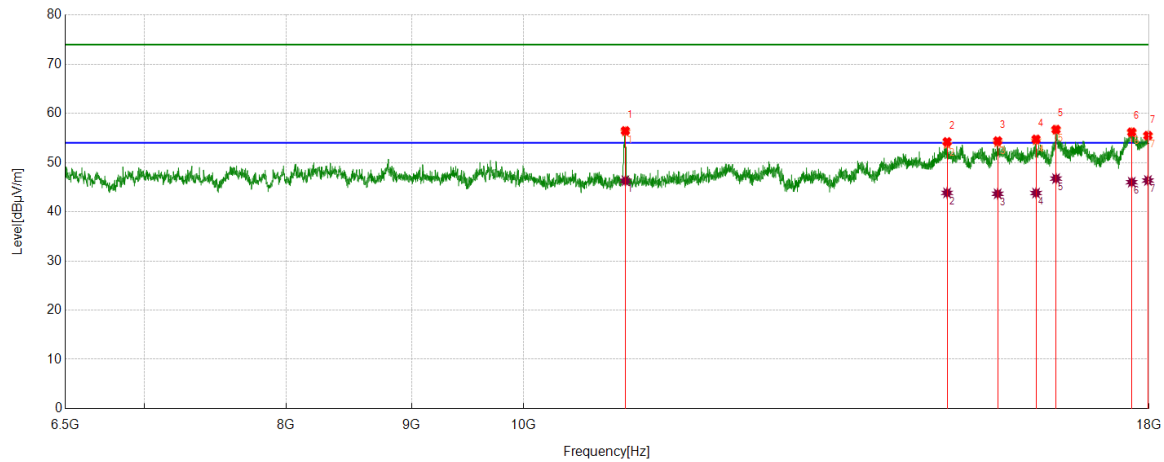
5. AVG: VBW refer to section 6.2.

6. For above 6.5GHz part, filter losses were only considered in the spurious frequency bands and the authorized band were not corrected for HPF losses. The proper operation of the transmitter prior to adding the filter to the measurement chain.

7. Only the worst case emission was recorded, if it complies with the limit, the other emissions deemed to comply with the limit.

8. Since non-restricted band peak emissions are less than the average limit, they also comply with the -27 dBm/MHz (68.2 dBuV/m) limit.

Test Mode	Channel	Polarization	Verdict
11a	5500	Horizontal	PASS



#### PK Result:

No.	Frequency [MHz]	Reading Level [dBuV]	Correct Factor [dB/m]	Result [dBuV/m]	Limit [dBuV/m]	Margin [dB]	Remark
1	11004.2505	49.28	7.18	56.46	74.00	-17.54	Horizontal
2	14888.8611	41.45	12.77	54.22	74.00	-19.78	Horizontal
3	15613.4517	40.85	13.55	54.40	74.00	-19.60	Horizontal
4	16187.0859	39.10	15.64	54.74	74.00	-19.26	Horizontal
5	16493.3117	40.09	16.63	56.72	74.00	-17.28	Horizontal
6	17709.5887	36.83	19.36	56.19	74.00	-17.81	Horizontal
7	17981.3102	34.83	20.66	55.49	74.00	-18.51	Horizontal

#### AV Result:

No.	Frequency [MHz]	Reading Level [dBuV]	Correct Factor [dB/m]	Result [dBuV/m]	Limit [dBuV/m]	Margin [dB]	Remark
1	11004.2505	39.12	7.18	46.30	54.00	-7.70	Horizontal
2	14888.8611	31.07	12.77	43.84	54.00	-10.16	Horizontal
3	15613.4517	30.11	13.55	43.66	54.00	-10.34	Horizontal
4	16187.0859	28.17	15.64	43.81	54.00	-10.19	Horizontal
5	16493.3117	30.12	16.63	46.75	54.00	-7.25	Horizontal
6	17709.5887	26.66	19.36	46.02	54.00	-7.98	Horizontal
7	17981.3102	25.70	20.66	46.36	54.00	-7.64	Horizontal

Remark: 1. Measurement = Reading Level + Correct Factor.

2. If Peak Result complies with AV limit, AV Result is deemed to comply with AV limit.

3. Test setup: RBW: 1 MHz, VBW: 3 MHz, Sweep time: auto.

4. Peak: Peak detector.

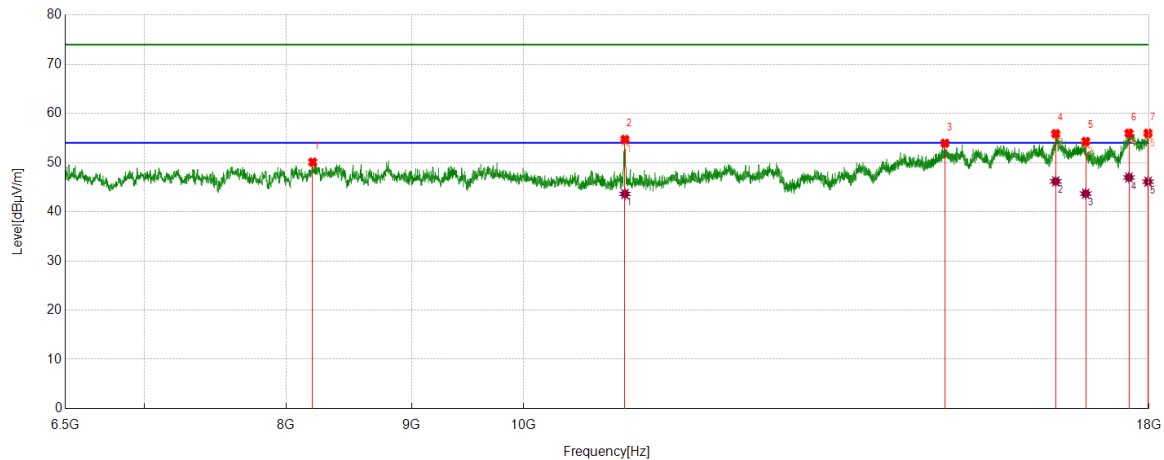
5. AVG: VBW refer to section 6.2.

6. For above 6.5GHz part, filter losses were only considered in the spurious frequency bands and the authorized band were not corrected for HPF losses. The proper operation of the transmitter prior to adding the filter to the measurement chain.

7. Only the worst case emission was recorded, if it complies with the limit, the other emissions deemed to comply with the limit.

8. Since non-restricted band peak emissions are less than the average limit, they also comply with the -27 dBm/MHz (68.2 dBuV/m) limit.

Test Mode	Channel	Polarization	Verdict
11a	5500	Vertical	PASS



#### PK Result:

No.	Frequency [MHz]	Reading Level [dBuV]	Correct Factor [dB/m]	Result [dBuV/m]	Limit [dBuV/m]	Margin [dB]	Remark
1	8202.2128	44.00	6.10	50.10	74.00	-23.90	Vertical
2	10999.9375	47.52	7.19	54.71	74.00	-19.29	Vertical
3	14858.6698	41.19	12.75	53.94	74.00	-20.06	Vertical
4	16488.9986	39.20	16.68	55.88	74.00	-18.12	Vertical
5	16960.5576	37.42	16.89	54.31	74.00	-19.69	Vertical
6	17663.5829	37.08	18.89	55.97	74.00	-18.03	Vertical
7	17982.7478	35.31	20.66	55.97	74.00	-18.03	Vertical

#### AV Result:

No.	Frequency [MHz]	Reading Level [dBuV]	Correct Factor [dB/m]	Result [dBuV/m]	Limit [dBuV/m]	Margin [dB]	Remark
1	10999.9375	36.44	7.19	43.63	54.00	-10.37	Vertical
2	16488.9986	29.50	16.68	46.18	54.00	-7.82	Vertical
3	16960.5576	26.79	16.89	43.68	54.00	-10.32	Vertical
4	17663.5829	28.08	18.89	46.97	54.00	-7.03	Vertical
5	17982.7478	25.45	20.66	46.11	54.00	-7.89	Vertical

Remark: 1. Measurement = Reading Level + Correct Factor.

2. If Peak Result complies with AV limit, AV Result is deemed to comply with AV limit.

3. Test setup: RBW: 1 MHz, VBW: 3 MHz, Sweep time: auto.

4. Peak: Peak detector.

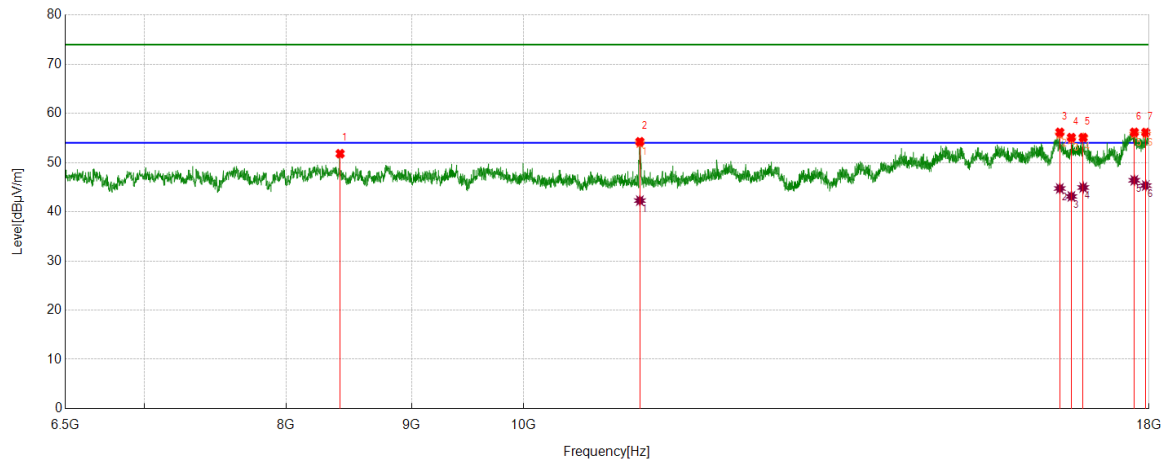
5. AVG: VBW refer to section 6.2.

6. For above 6.5GHz part, filter losses were only considered in the spurious frequency bands and the authorized band were not corrected for HPF losses. The proper operation of the transmitter prior to adding the filter to the measurement chain.

7. Only the worst case emission was recorded, if it complies with the limit, the other emissions deemed to comply with the limit.

8. Since non-restricted band peak emissions are less than the average limit, they also comply with the -27 dBm/MHz (68.2 dBuV/m) limit.

Test Mode	Channel	Polarization	Verdict
11a	5580	Horizontal	PASS



#### PK Result:

No.	Frequency [MHz]	Reading Level [dBuV]	Correct Factor [dB/m]	Result [dBuV/m]	Limit [dBuV/m]	Margin [dB]	Remark
1	8416.4271	45.45	6.36	51.81	74.00	-22.19	Horizontal
2	11155.2069	47.08	7.16	54.24	74.00	-19.76	Horizontal
3	16552.2565	39.61	16.55	56.16	74.00	-17.84	Horizontal
4	16733.4042	38.45	16.64	55.09	74.00	-18.91	Horizontal
5	16920.3025	38.29	16.80	55.09	74.00	-18.91	Horizontal
6	17752.7191	36.60	19.56	56.16	74.00	-17.84	Horizontal
7	17945.3682	35.74	20.39	56.13	74.00	-17.87	Horizontal

#### AV Result:

No.	Frequency [MHz]	Reading Level [dBuV]	Correct Factor [dB/m]	Result [dBuV/m]	Limit [dBuV/m]	Margin [dB]	Remark
1	11155.2069	35.11	7.16	42.27	54.00	-11.73	Horizontal
2	16552.2565	28.19	16.55	44.74	54.00	-9.26	Horizontal
3	16733.4042	26.48	16.64	43.12	54.00	-10.88	Horizontal
4	16920.3025	28.13	16.80	44.93	54.00	-9.07	Horizontal
5	17752.7191	26.84	19.56	46.40	54.00	-7.60	Horizontal
6	17945.3682	24.94	20.39	45.33	54.00	-8.67	Horizontal

Remark: 1. Measurement = Reading Level + Correct Factor.

2. If Peak Result complies with AV limit, AV Result is deemed to comply with AV limit.

3. Test setup: RBW: 1 MHz, VBW: 3 MHz, Sweep time: auto.

4. Peak: Peak detector.

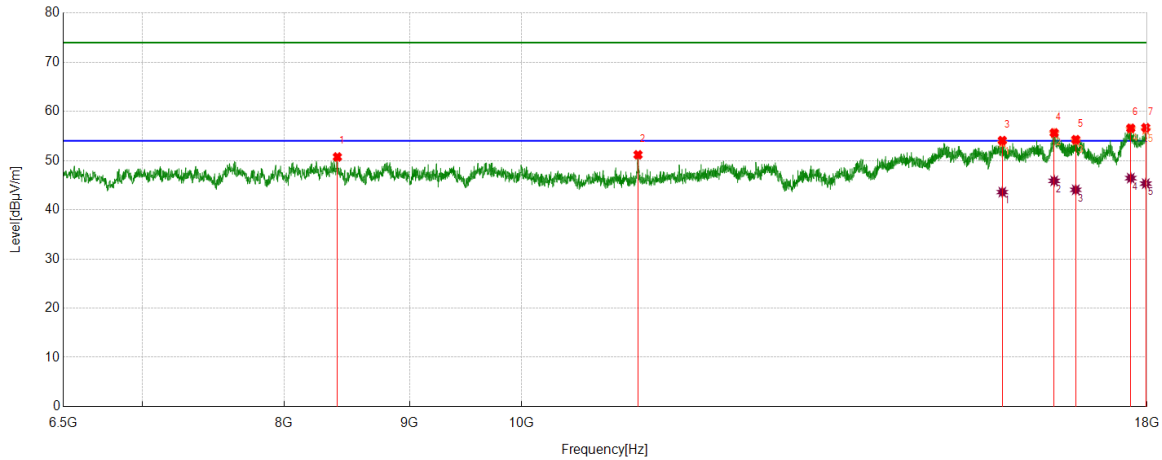
5. AVG: VBW refer to section 6.2.

6. For above 6.5GHz part, filter losses were only considered in the spurious frequency bands and the authorized band were not corrected for HPF losses. The proper operation of the transmitter prior to adding the filter to the measurement chain.

7. Only the worst case emission was recorded, if it complies with the limit, the other emissions deemed to comply with the limit.

8. Since non-restricted band peak emissions are less than the average limit, they also comply with the -27 dBm/MHz (68.2 dBuV/m) limit.

Test Mode	Channel	Polarization	Verdict
11a	5580	Vertical	PASS



#### PK Result:

No.	Frequency [MHz]	Reading Level [dBuV]	Correct Factor [dB/m]	Result [dBuV/m]	Limit [dBuV/m]	Margin [dB]	Remark
1	8410.6763	44.24	6.50	50.74	74.00	-23.26	Vertical
2	11156.6446	44.05	7.13	51.18	74.00	-22.82	Vertical
3	15711.2139	39.79	14.28	54.07	74.00	-19.93	Vertical
4	16496.1870	39.07	16.57	55.64	74.00	-18.36	Vertical
5	16834.0418	37.20	17.06	54.26	74.00	-19.74	Vertical
6	17726.8409	37.07	19.51	56.58	74.00	-17.42	Vertical
7	17978.4348	36.04	20.65	56.69	74.00	-17.31	Vertical

#### AV Result:

No.	Frequency [MHz]	Reading Level [dBuV]	Correct Factor [dB/m]	Result [dBuV/m]	Limit [dBuV/m]	Margin [dB]	Remark
1	15711.2139	29.31	14.28	43.59	54.00	-10.41	Vertical
2	16496.1870	29.31	16.57	45.88	54.00	-8.12	Vertical
3	16834.0418	27.00	17.06	44.06	54.00	-9.94	Vertical
4	17726.8409	26.93	19.51	46.44	54.00	-7.56	Vertical
5	17978.4348	24.67	20.65	45.32	54.00	-8.68	Vertical

Remark: 1. Measurement = Reading Level + Correct Factor.

2. If Peak Result complies with AV limit, AV Result is deemed to comply with AV limit.

3. Test setup: RBW: 1 MHz, VBW: 3 MHz, Sweep time: auto.

4. Peak: Peak detector.

5. AVG: VBW refer to section 6.2.

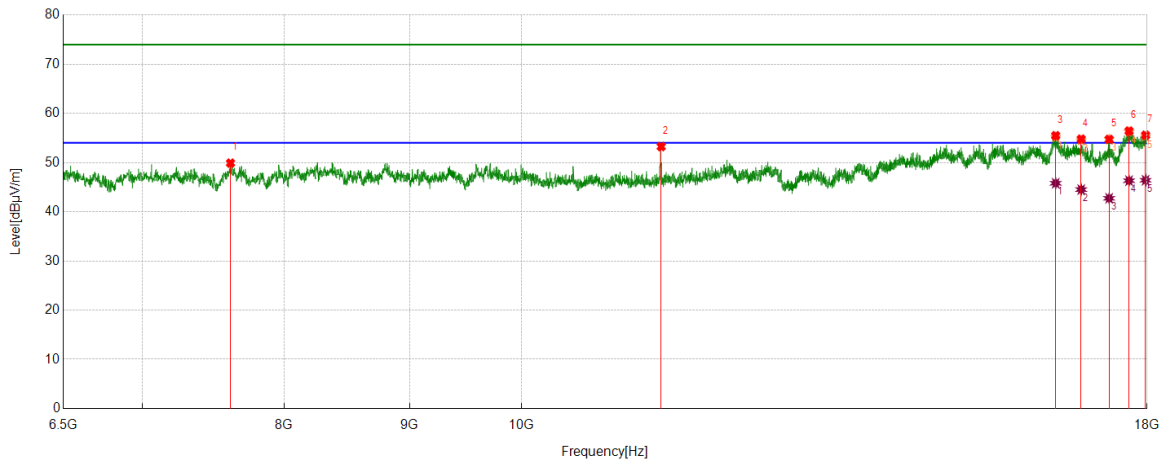
6. For above 6.5GHz part, filter losses were only considered in the spurious frequency bands and the authorized band were not corrected for HPF losses. The proper operation of the transmitter prior to adding the filter to the measurement chain.

7. Only the worst case emission was recorded, if it complies with the limit, the other emissions deemed to comply with the limit.

8. Since non-restricted band peak emissions are less than the average limit, they also comply with the -27 dBm/MHz (68.2 dBuV/m) limit.



Test Mode	Channel	Polarization	Verdict
11a	5700	Horizontal	PASS



#### PK Result:

No.	Frequency	Reading Level	Correct Factor	Result	Limit	Margin	Remark
	[MHz]	[dBuV]	[dB/m]	[dBuV/m]	[dBuV/m]	[dB]	
1	7607.0134	44.89	5.01	49.90	74.00	-24.10	Horizontal
2	11402.4878	46.03	7.23	53.26	74.00	-20.74	Horizontal
3	16519.1899	38.81	16.66	55.47	74.00	-18.53	Horizontal
4	16920.3025	37.97	16.80	54.77	74.00	-19.23	Horizontal
5	17370.2963	36.64	18.08	54.72	74.00	-19.28	Horizontal
6	17698.0873	37.17	19.24	56.41	74.00	-17.59	Horizontal
7	17975.5594	34.97	20.60	55.57	74.00	-18.43	Horizontal

#### AV Result:

No.	Frequency	Reading Level	Correct Factor	Result	Limit	Margin	Remark
	[MHz]	[dBuV]	[dB/m]	[dBuV/m]	[dBuV/m]	[dB]	
1	16519.1899	29.14	16.66	45.80	54.00	-8.20	Horizontal
2	16920.3025	27.71	16.80	44.51	54.00	-9.49	Horizontal
3	17370.2963	24.66	18.08	42.74	54.00	-11.26	Horizontal
4	17698.0873	27.08	19.24	46.32	54.00	-7.68	Horizontal
5	17975.5594	25.81	20.60	46.41	54.00	-7.59	Horizontal

Remark: 1. Measurement = Reading Level + Correct Factor.

2. If Peak Result complies with AV limit, AV Result is deemed to comply with AV limit.

3. Test setup: RBW: 1 MHz, VBW: 3 MHz, Sweep time: auto.

4. Peak: Peak detector.

5. AVG: VBW refer to section 6.2.

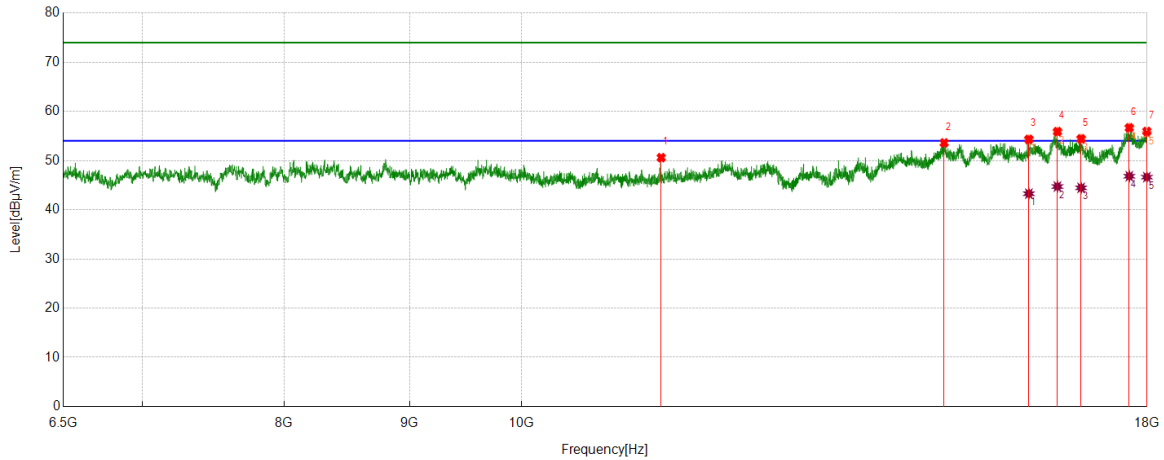
6. For above 6.5GHz part, filter losses were only considered in the spurious frequency bands and the authorized band were not corrected for HPF losses. The proper operation of the transmitter prior to adding the filter to the measurement chain.

7. Only the worst case emission was recorded, if it complies with the limit, the other emissions deemed to comply with the limit.

8. Since non-restricted band peak emissions are less than the average limit, they also comply with the -27 dBm/MHz (68.2 dBuV/m) limit.



Test Mode	Channel	Polarization	Verdict
11a	5700	Vertical	PASS



#### PK Result:

No.	Frequency [MHz]	Reading Level [dBuV]	Correct Factor [dB/m]	Result [dBuV/m]	Limit [dBuV/m]	Margin [dB]	Remark
1	11402.4878	43.37	7.23	50.60	74.00	-23.40	Vertical
2	14875.9220	40.88	12.72	53.60	74.00	-20.40	Vertical
3	16108.0135	38.99	15.34	54.33	74.00	-19.67	Vertical
4	16546.5058	39.35	16.55	55.90	74.00	-18.10	Vertical
5	16918.8649	37.65	16.78	54.43	74.00	-19.57	Vertical
6	17702.4003	37.38	19.29	56.67	74.00	-17.33	Vertical
7	17997.1246	35.36	20.57	55.93	74.00	-18.07	Vertical

#### AV Result:

No.	Frequency [MHz]	Reading Level [dBuV]	Correct Factor [dB/m]	Result [dBuV/m]	Limit [dBuV/m]	Margin [dB]	Remark
1	16108.0135	27.93	15.34	43.27	54.00	-10.73	Vertical
2	16546.5058	28.17	16.55	44.72	54.00	-9.28	Vertical
3	16918.8649	27.68	16.78	44.46	54.00	-9.54	Vertical
4	17702.4003	27.53	19.29	46.82	54.00	-7.18	Vertical
5	17997.1246	26.06	20.57	46.63	54.00	-7.37	Vertical

Remark: 1. Measurement = Reading Level + Correct Factor.

2. If Peak Result complies with AV limit, AV Result is deemed to comply with AV limit.

3. Test setup: RBW: 1 MHz, VBW: 3 MHz, Sweep time: auto.

4. Peak: Peak detector.

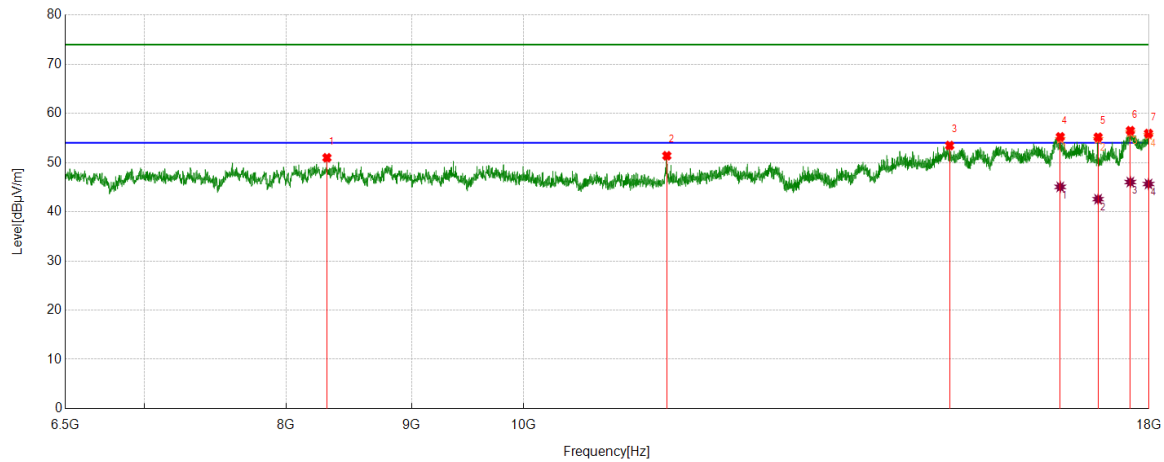
5. AVG: VBW refer to section 6.2.

6. For above 6.5GHz part, filter losses were only considered in the spurious frequency bands and the authorized band were not corrected for HPF losses. The proper operation of the transmitter prior to adding the filter to the measurement chain.

7. Only the worst case emission was recorded, if it complies with the limit, the other emissions deemed to comply with the limit.

8. Since non-restricted band peak emissions are less than the average limit, they also comply with the -27 dBm/MHz (68.2 dBuV/m) limit.

Test Mode	Channel	Polarization	Verdict
11a	5720	Horizontal	PASS


**PK Result:**

No.	Frequency [MHz]	Reading Level [dBuV]	Correct Factor [dB/m]	Result [dBuV/m]	Limit [dBuV/m]	Margin [dB]	Remark
1	8312.9141	44.77	6.21	50.98	74.00	-23.02	Horizontal
2	11441.3052	44.08	7.31	51.39	74.00	-22.61	Horizontal
3	14924.8031	40.73	12.74	53.47	74.00	-20.53	Horizontal
4	16559.4449	38.66	16.58	55.24	74.00	-18.76	Horizontal
5	17158.9574	37.97	17.19	55.16	74.00	-18.84	Horizontal
6	17686.5858	37.40	19.09	56.49	74.00	-17.51	Horizontal
7	17991.3739	35.29	20.62	55.91	74.00	-18.09	Horizontal

**AV Result:**

No.	Frequency [MHz]	Reading Level [dBuV]	Correct Factor [dB/m]	Result [dBuV/m]	Limit [dBuV/m]	Margin [dB]	Remark
1	16559.4449	28.48	16.58	45.06	54.00	-8.94	Horizontal
2	17158.9574	25.37	17.19	42.56	54.00	-11.44	Horizontal
3	17686.5858	26.95	19.09	46.04	54.00	-7.96	Horizontal
4	17991.3739	25.03	20.62	45.65	54.00	-8.35	Horizontal

Remark: 1. Measurement = Reading Level + Correct Factor.

2. If Peak Result complies with AV limit, AV Result is deemed to comply with AV limit.

3. Test setup: RBW: 1 MHz, VBW: 3 MHz, Sweep time: auto.

4. Peak: Peak detector.

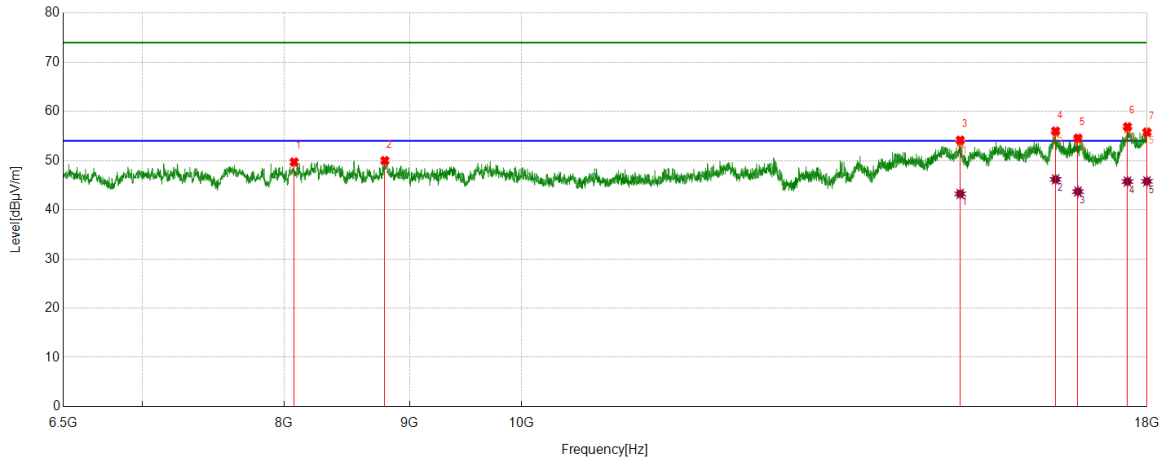
5. AVG: VBW refer to section 6.2.

6. For above 6.5GHz part, filter losses were only considered in the spurious frequency bands and the authorized band were not corrected for HPF losses. The proper operation of the transmitter prior to adding the filter to the measurement chain.

7. Only the worst case emission was recorded, if it complies with the limit, the other emissions deemed to comply with the limit.

8. Since non-restricted band peak emissions are less than the average limit, they also comply with the -27 dBm/MHz (68.2 dBuV/m) limit.

Test Mode	Channel	Polarization	Verdict
11a	5720	Vertical	PASS



#### PK Result:

No.	Frequency [MHz]	Reading Level [dBuV]	Correct Factor [dB/m]	Result [dBuV/m]	Limit [dBuV/m]	Margin [dB]	Remark
1	8075.6970	43.88	5.83	49.71	74.00	-24.29	Vertical
2	8794.5368	43.68	6.31	49.99	74.00	-24.01	Vertical
3	15101.6377	40.97	13.17	54.14	74.00	-19.86	Vertical
4	16517.7522	39.32	16.67	55.99	74.00	-18.01	Vertical
5	16868.5461	37.77	16.78	54.55	74.00	-19.45	Vertical
6	17672.2090	37.93	18.94	56.87	74.00	-17.13	Vertical
7	17998.5623	35.22	20.55	55.77	74.00	-18.23	Vertical

#### AV Result:

No.	Frequency [MHz]	Reading Level [dBuV]	Correct Factor [dB/m]	Result [dBuV/m]	Limit [dBuV/m]	Margin [dB]	Remark
1	15101.6377	30.06	13.17	43.23	54.00	-10.77	Vertical
2	16517.7522	29.50	16.67	46.17	54.00	-7.83	Vertical
3	16868.5461	26.92	16.78	43.70	54.00	-10.30	Vertical
4	17672.2090	26.80	18.94	45.74	54.00	-8.26	Vertical
5	17998.5623	25.23	20.55	45.78	54.00	-8.22	Vertical

Remark: 1. Measurement = Reading Level + Correct Factor.

2. If Peak Result complies with AV limit, AV Result is deemed to comply with AV limit.

3. Test setup: RBW: 1 MHz, VBW: 3 MHz, Sweep time: auto.

4. Peak: Peak detector.

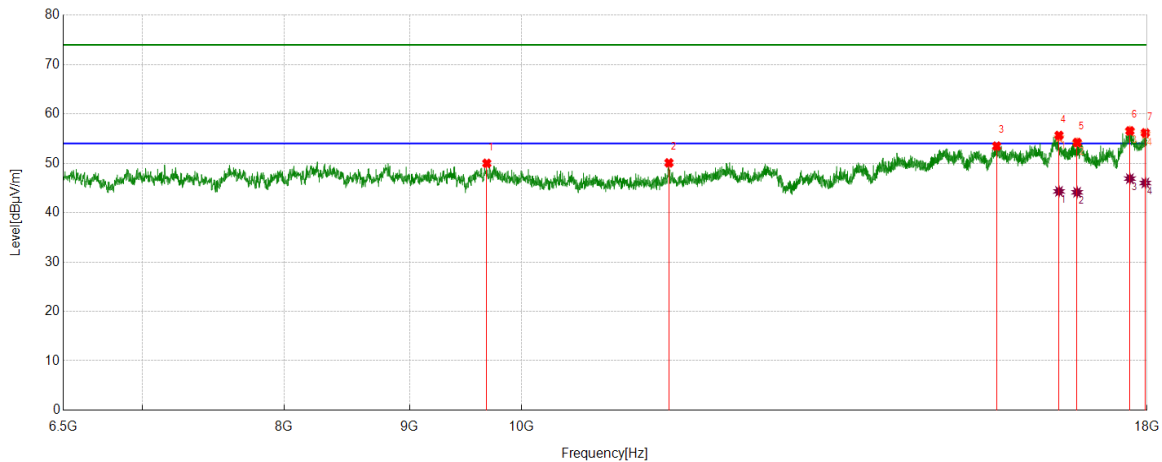
5. AVG: VBW refer to section 6.2.

6. For above 6.5GHz part, filter losses were only considered in the spurious frequency bands and the authorized band were not corrected for HPF losses. The proper operation of the transmitter prior to adding the filter to the measurement chain.

7. Only the worst case emission was recorded, if it complies with the limit, the other emissions deemed to comply with the limit.

8. Since non-restricted band peak emissions are less than the average limit, they also comply with the -27 dBm/MHz (68.2 dBuV/m) limit.

Test Mode	Channel	Polarization	Verdict
11a	5745	Horizontal	PASS



#### PK Result:

No.	Frequency [MHz]	Reading Level [dBuV]	Correct Factor [dB/m]	Result [dBuV/m]	Limit [dBuV/m]	Margin [dB]	Remark
1	9678.7098	43.55	6.44	49.99	74.00	-24.01	Horizontal
2	11485.8732	42.60	7.48	50.08	74.00	-23.92	Horizontal
3	15627.8285	39.80	13.67	53.47	74.00	-20.53	Horizontal
4	16570.9464	39.04	16.60	55.64	74.00	-18.36	Horizontal
5	16855.6070	37.26	16.95	54.21	74.00	-19.79	Horizontal
6	17712.4641	37.18	19.38	56.56	74.00	-17.44	Horizontal
7	17971.2464	35.62	20.54	56.16	74.00	-17.84	Horizontal

#### AV Result:

No.	Frequency [MHz]	Reading Level [dBuV]	Correct Factor [dB/m]	Result [dBuV/m]	Limit [dBuV/m]	Margin [dB]	Remark
1	16570.9464	27.71	16.60	44.31	54.00	-9.69	Horizontal
2	16855.6070	27.17	16.95	44.12	54.00	-9.88	Horizontal
3	17712.4641	27.51	19.38	46.89	54.00	-7.11	Horizontal
4	17971.2464	25.47	20.54	46.01	54.00	-7.99	Horizontal

Remark: 1. Measurement = Reading Level + Correct Factor.

2. If Peak Result complies with AV limit, AV Result is deemed to comply with AV limit.

3. Test setup: RBW: 1 MHz, VBW: 3 MHz, Sweep time: auto.

4. Peak: Peak detector.

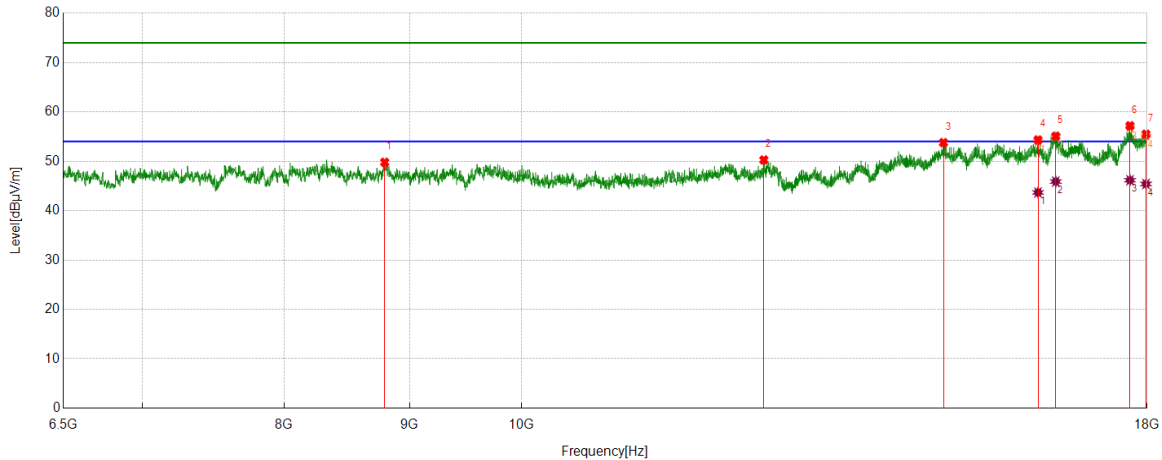
5. AVG: VBW refer to section 6.2.

6. For above 6.5GHz part, filter losses were only considered in the spurious frequency bands and the authorized band were not corrected for HPF losses. The proper operation of the transmitter prior to adding the filter to the measurement chain.

7. Only the worst case emission was recorded, if it complies with the limit, the other emissions deemed to comply with the limit.

8. Since non-restricted band peak emissions are less than the average limit, they also comply with the -27 dBm/MHz (68.2 dBuV/m) limit.

Test Mode	Channel	Polarization	Verdict
11a	5745	Vertical	PASS



#### PK Result:

No.	Frequency [MHz]	Reading Level [dBuV]	Correct Factor [dB/m]	Result [dBuV/m]	Limit [dBuV/m]	Margin [dB]	Remark
1	8793.0991	43.49	6.31	49.80	74.00	-24.20	Vertical
2	12556.9446	41.62	8.64	50.26	74.00	-23.74	Vertical
3	14865.8582	41.04	12.74	53.78	74.00	-20.22	Vertical
4	16247.4684	38.51	15.81	54.32	74.00	-19.68	Vertical
5	16520.6276	38.45	16.63	55.08	74.00	-18.92	Vertical
6	17713.9017	37.78	19.41	57.19	74.00	-16.81	Vertical
7	17982.7478	34.82	20.66	55.48	74.00	-18.52	Vertical

#### AV Result:

No.	Frequency [MHz]	Reading Level [dBuV]	Correct Factor [dB/m]	Result [dBuV/m]	Limit [dBuV/m]	Margin [dB]	Remark
1	16247.4684	27.87	15.81	43.68	54.00	-10.32	Vertical
2	16520.6276	29.26	16.63	45.89	54.00	-8.11	Vertical
3	17713.9017	26.75	19.41	46.16	54.00	-7.84	Vertical
4	17982.7478	24.74	20.66	45.40	54.00	-8.60	Vertical

Remark: 1. Measurement = Reading Level + Correct Factor.

2. If Peak Result complies with AV limit, AV Result is deemed to comply with AV limit.

3. Test setup: RBW: 1 MHz, VBW: 3 MHz, Sweep time: auto.

4. Peak: Peak detector.

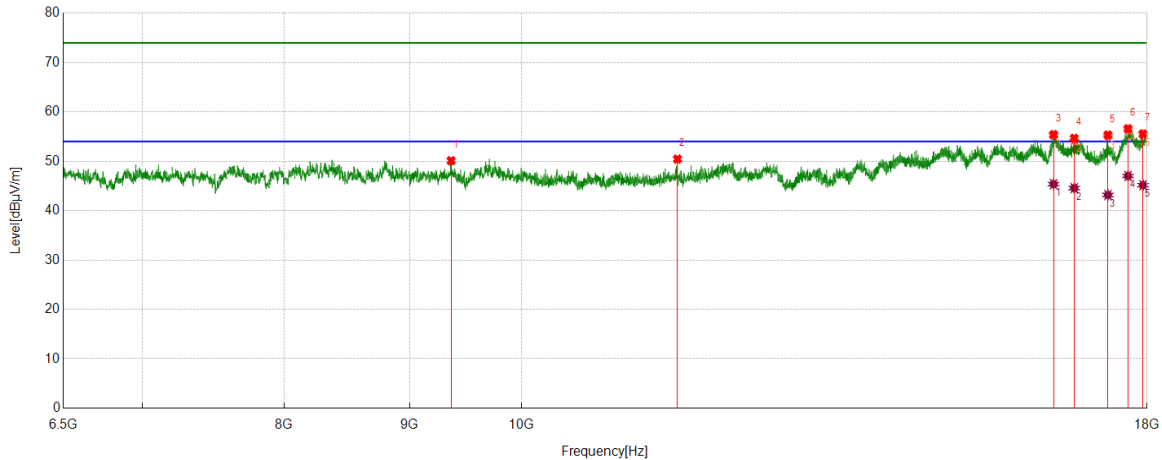
5. AVG: VBW refer to section 6.2.

6. For above 6.5GHz part, filter losses were only considered in the spurious frequency bands and the authorized band were not corrected for HPF losses. The proper operation of the transmitter prior to adding the filter to the measurement chain.

7. Only the worst case emission was recorded, if it complies with the limit, the other emissions deemed to comply with the limit.

8. Since non-restricted band peak emissions are less than the average limit, they also comply with the -27 dBm/MHz (68.2 dBuV/m) limit.

Test Mode	Channel	Polarization	Verdict
11a	5785	Horizontal	PASS



#### PK Result:

No.	Frequency [MHz]	Reading Level [dBuV]	Correct Factor [dB/m]	Result [dBuV/m]	Limit [dBuV/m]	Margin [dB]	Remark
1	9359.5449	43.71	6.40	50.11	74.00	-23.89	Horizontal
2	11577.8847	42.77	7.68	50.45	74.00	-23.55	Horizontal
3	16486.1233	38.73	16.65	55.38	74.00	-18.62	Horizontal
4	16809.6012	37.68	16.97	54.65	74.00	-19.35	Horizontal
5	17350.1688	37.48	17.84	55.32	74.00	-18.68	Horizontal
6	17680.8351	37.55	19.03	56.58	74.00	-17.42	Horizontal
7	17932.4291	35.31	20.21	55.52	74.00	-18.48	Horizontal

#### AV Result:

No.	Frequency [MHz]	Reading Level [dBuV]	Correct Factor [dB/m]	Result [dBuV/m]	Limit [dBuV/m]	Margin [dB]	Remark
1	16486.1233	28.72	16.65	45.37	54.00	-8.63	Horizontal
2	16809.6012	27.59	16.97	44.56	54.00	-9.44	Horizontal
3	17350.1688	25.34	17.84	43.18	54.00	-10.82	Horizontal
4	17680.8351	27.99	19.03	47.02	54.00	-6.98	Horizontal
5	17932.4291	24.95	20.21	45.16	54.00	-8.84	Horizontal

Remark: 1. Measurement = Reading Level + Correct Factor.

2. If Peak Result complies with AV limit, AV Result is deemed to comply with AV limit.

3. Test setup: RBW: 1 MHz, VBW: 3 MHz, Sweep time: auto.

4. Peak: Peak detector.

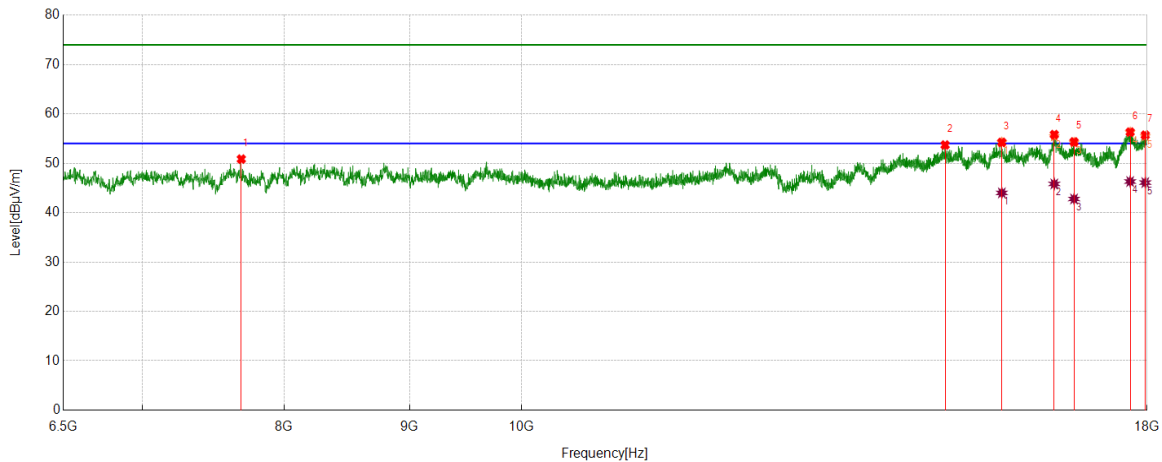
5. AVG: VBW refer to section 6.2.

6. For above 6.5GHz part, filter losses were only considered in the spurious frequency bands and the authorized band were not corrected for HPF losses. The proper operation of the transmitter prior to adding the filter to the measurement chain.

7. Only the worst case emission was recorded, if it complies with the limit, the other emissions deemed to comply with the limit.

8. Since non-restricted band peak emissions are less than the average limit, they also comply with the -27 dBm/MHz (68.2 dBuV/m) limit.

Test Mode	Channel	Polarization	Verdict
11a	5785	Vertical	PASS



#### PK Result:

No.	Frequency [MHz]	Reading Level [dBuV]	Correct Factor [dB/m]	Result [dBuV/m]	Limit [dBuV/m]	Margin [dB]	Remark
1	7684.6481	45.51	5.34	50.85	74.00	-23.15	Vertical
2	14888.8611	40.93	12.77	53.70	74.00	-20.30	Vertical
3	15704.0255	40.07	14.17	54.24	74.00	-19.76	Vertical
4	16497.6247	39.26	16.55	55.81	74.00	-18.19	Vertical
5	16806.7258	37.44	16.89	54.33	74.00	-19.67	Vertical
6	17716.7771	36.88	19.44	56.32	74.00	-17.68	Vertical
7	17969.8087	35.18	20.52	55.70	74.00	-18.30	Vertical

#### AV Result:

No.	Frequency [MHz]	Reading Level [dBuV]	Correct Factor [dB/m]	Result [dBuV/m]	Limit [dBuV/m]	Margin [dB]	Remark
1	15704.0255	29.83	14.17	44.00	54.00	-10.00	Vertical
2	16497.6247	29.27	16.55	45.82	54.00	-8.18	Vertical
3	16806.7258	25.88	16.89	42.77	54.00	-11.23	Vertical
4	17716.7771	26.86	19.44	46.30	54.00	-7.70	Vertical
5	17969.8087	25.57	20.52	46.09	54.00	-7.91	Vertical

Remark: 1. Measurement = Reading Level + Correct Factor.

2. If Peak Result complies with AV limit, AV Result is deemed to comply with AV limit.

3. Test setup: RBW: 1 MHz, VBW: 3 MHz, Sweep time: auto.

4. Peak: Peak detector.

5. AVG: VBW refer to section 6.2.

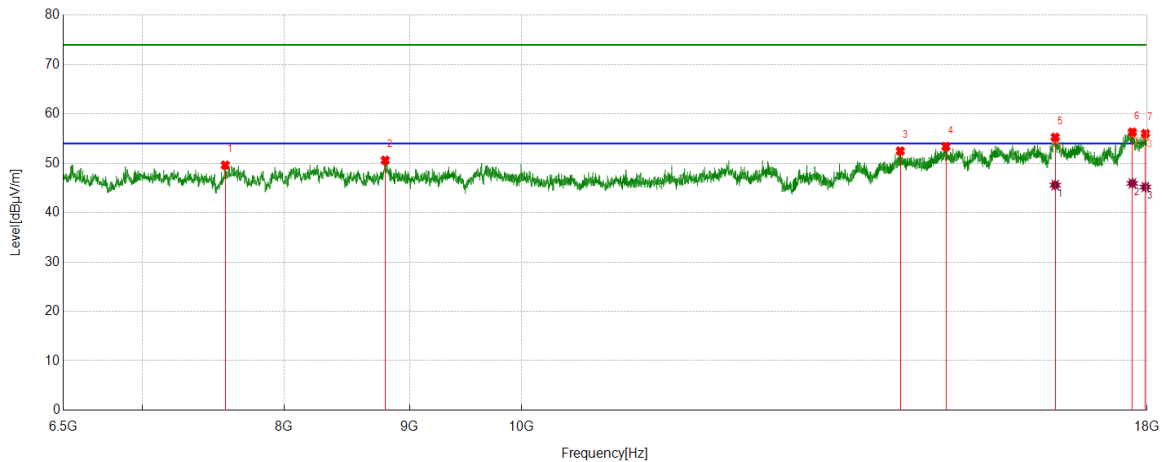
6. For above 6.5GHz part, filter losses were only considered in the spurious frequency bands and the authorized band were not corrected for HPF losses. The proper operation of the transmitter prior to adding the filter to the measurement chain.

7. Only the worst case emission was recorded, if it complies with the limit, the other emissions deemed to comply with the limit.

8. Since non-restricted band peak emissions are less than the average limit, they also comply with the -27 dBm/MHz (68.2 dBuV/m) limit.



Test Mode	Channel	Polarization	Verdict
11a	5825	Horizontal	PASS



#### PK Result:

No.	Frequency [MHz]	Reading Level [dBuV]	Correct Factor [dB/m]	Result [dBuV/m]	Limit [dBuV/m]	Margin [dB]	Remark
1	7569.6337	44.60	5.02	49.62	74.00	-24.38	Horizontal
2	8797.4122	44.30	6.31	50.61	74.00	-23.39	Horizontal
3	14274.9719	40.31	12.17	52.48	74.00	-21.52	Horizontal
4	14900.3625	40.66	12.73	53.39	74.00	-20.61	Horizontal
5	16512.0015	38.54	16.72	55.26	74.00	-18.74	Horizontal
6	17754.1568	36.76	19.54	56.30	74.00	-17.70	Horizontal
7	17972.6841	35.46	20.56	56.02	74.00	-17.98	Horizontal

#### AV Result:

No.	Frequency [MHz]	Reading Level [dBuV]	Correct Factor [dB/m]	Result [dBuV/m]	Limit [dBuV/m]	Margin [dB]	Remark
1	16512.0015	28.86	16.72	45.58	54.00	-8.42	Horizontal
2	17754.1568	26.39	19.54	45.93	54.00	-8.07	Horizontal
3	17972.6841	24.63	20.56	45.19	54.00	-8.81	Horizontal

Remark: 1. Measurement = Reading Level + Correct Factor.

2. If Peak Result complies with AV limit, AV Result is deemed to comply with AV limit.

3. Test setup: RBW: 1 MHz, VBW: 3 MHz, Sweep time: auto.

4. Peak: Peak detector.

5. AVG: VBW refer to section 6.2.

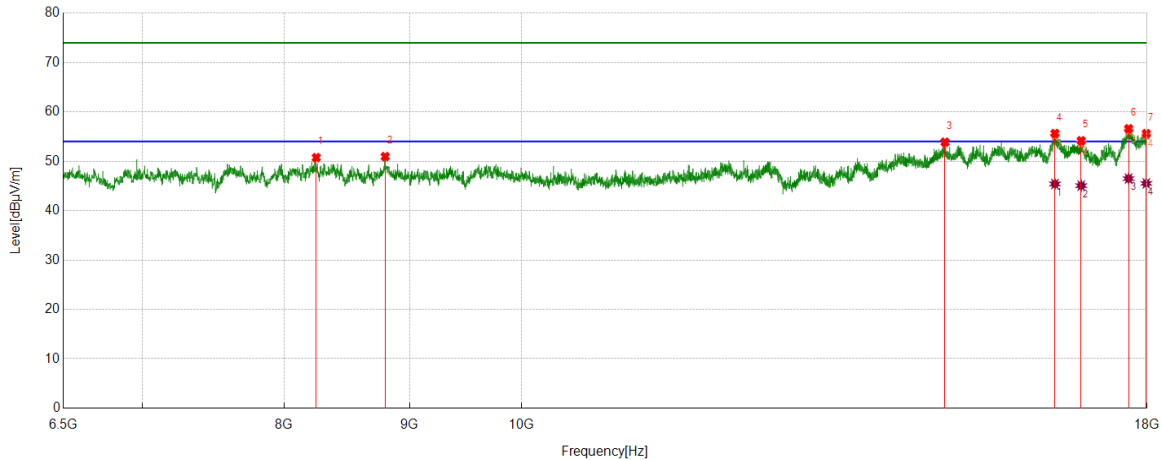
6. For above 6.5GHz part, filter losses were only considered in the spurious frequency bands and the authorized band were not corrected for HPF losses. The proper operation of the transmitter prior to adding the filter to the measurement chain.

7. Only the worst case emission was recorded, if it complies with the limit, the other emissions deemed to comply with the limit.

8. Since non-restricted band peak emissions are less than the average limit, they also comply with the -27 dBm/MHz (68.2 dBuV/m) limit.



Test Mode	Channel	Polarization	Verdict
11a	5825	Vertical	PASS



#### PK Result:

No.	Frequency [MHz]	Reading Level [dBuV]	Correct Factor [dB/m]	Result [dBuV/m]	Limit [dBuV/m]	Margin [dB]	Remark
1	8245.3432	44.63	6.11	50.74	74.00	-23.26	Vertical
2	8797.4122	44.64	6.31	50.95	74.00	-23.05	Vertical
3	14887.4234	41.11	12.76	53.87	74.00	-20.13	Vertical
4	16507.6885	38.94	16.69	55.63	74.00	-18.37	Vertical
5	16920.3025	37.36	16.80	54.16	74.00	-19.84	Vertical
6	17690.8989	37.44	19.15	56.59	74.00	-17.41	Vertical
7	17987.0609	34.96	20.64	55.60	74.00	-18.40	Vertical

#### AV Result:

No.	Frequency [MHz]	Reading Level [dBuV]	Correct Factor [dB/m]	Result [dBuV/m]	Limit [dBuV/m]	Margin [dB]	Remark
1	16507.6885	28.71	16.69	45.40	54.00	-8.60	Vertical
2	16920.3025	28.27	16.80	45.07	54.00	-8.93	Vertical
3	17690.8989	27.34	19.15	46.49	54.00	-7.51	Vertical
4	17987.0609	24.88	20.64	45.52	54.00	-8.48	Vertical

Remark: 1. Measurement = Reading Level + Correct Factor.

2. If Peak Result complies with AV limit, AV Result is deemed to comply with AV limit.

3. Test setup: RBW: 1 MHz, VBW: 3 MHz, Sweep time: auto.

4. Peak: Peak detector.

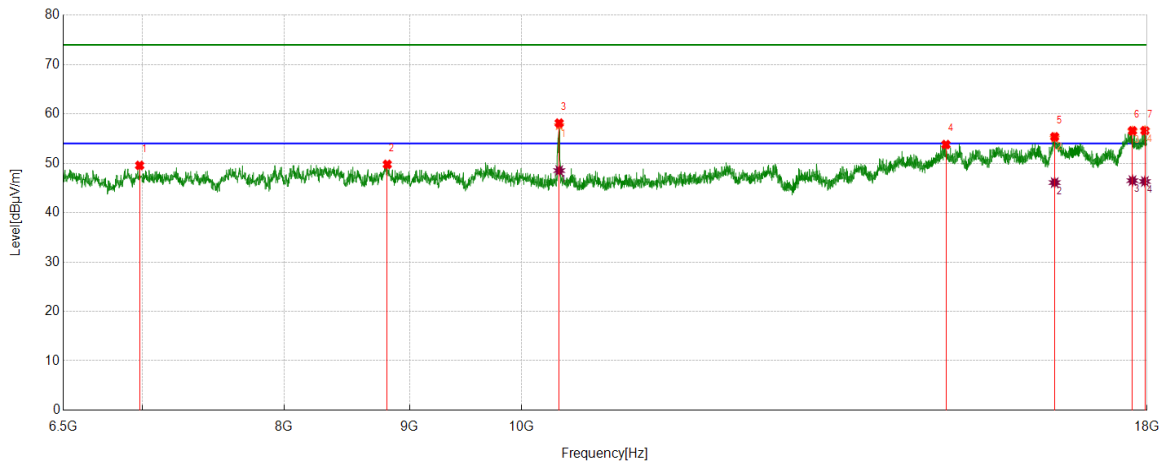
5. AVG: VBW refer to section 6.2.

6. For above 6.5GHz part, filter losses were only considered in the spurious frequency bands and the authorized band were not corrected for HPF losses. The proper operation of the transmitter prior to adding the filter to the measurement chain.

7. Only the worst case emission was recorded, if it complies with the limit, the other emissions deemed to comply with the limit.

8. Since non-restricted band peak emissions are less than the average limit, they also comply with the -27 dBm/MHz (68.2 dBuV/m) limit.

Test Mode	Channel	Polarization	Verdict
11ac VHT20	5180	Horizontal	PASS



#### PK Result:

No.	Frequency [MHz]	Reading Level [dBuV]	Correct Factor [dB/m]	Result [dBuV/m]	Limit [dBuV/m]	Margin [dB]	Remark
1	6984.4981	45.62	3.94	49.56	74.00	-24.44	Horizontal
2	8814.6643	43.43	6.35	49.78	74.00	-24.22	Horizontal
3	10360.1700	51.42	6.72	58.14	74.00	-15.86	Horizontal
4	14900.3625	41.06	12.73	53.79	74.00	-20.21	Horizontal
5	16503.3754	38.77	16.59	55.36	74.00	-18.64	Horizontal
6	17755.5944	37.06	19.52	56.58	74.00	-17.42	Horizontal
7	17964.0580	36.07	20.54	56.61	74.00	-17.39	Horizontal

#### AV Result:

No.	Frequency [MHz]	Reading Level [dBuV]	Correct Factor [dB/m]	Result [dBuV/m]	Limit [dBuV/m]	Margin [dB]	Remark
1	10360.1700	41.80	6.72	48.52	54.00	-5.48	Horizontal
2	16503.3754	29.50	16.59	46.09	54.00	-7.91	Horizontal
3	17755.5944	26.97	19.52	46.49	54.00	-7.51	Horizontal
4	17964.0580	25.77	20.54	46.31	54.00	-7.69	Horizontal

Remark: 1. Measurement = Reading Level + Correct Factor.

2. If Peak Result complies with AV limit, AV Result is deemed to comply with AV limit.

3. Test setup: RBW: 1 MHz, VBW: 3 MHz, Sweep time: auto.

4. Peak: Peak detector.

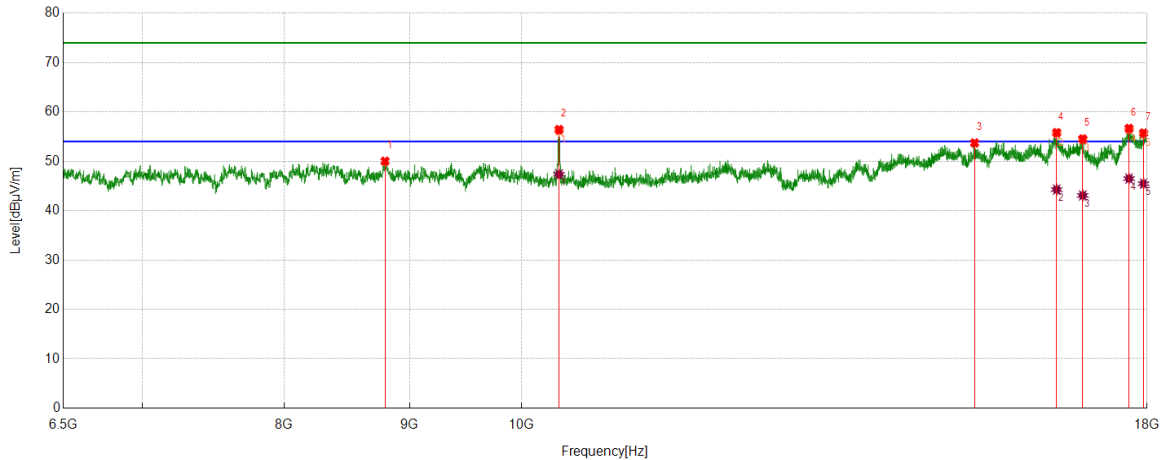
5. AVG: VBW refer to section 6.2.

6. For above 6.5GHz part, filter losses were only considered in the spurious frequency bands and the authorized band were not corrected for HPF losses. The proper operation of the transmitter prior to adding the filter to the measurement chain.

7. Only the worst case emission was recorded, if it complies with the limit, the other emissions deemed to comply with the limit.

8. Since non-restricted band peak emissions are less than the average limit, they also comply with the -27 dBm/MHz (68.2 dBuV/m) limit.

Test Mode	Channel	Polarization	Verdict
11ac VHT20	5180	Vertical	PASS



#### PK Result:

No.	Frequency [MHz]	Reading Level [dBuV]	Correct Factor [dB/m]	Result [dBuV/m]	Limit [dBuV/m]	Margin [dB]	Remark
1	8795.9745	43.71	6.30	50.01	74.00	-23.99	Vertical
2	10358.7323	49.69	6.72	56.41	74.00	-17.59	Vertical
3	15307.2259	40.51	13.20	53.71	74.00	-20.29	Vertical
4	16535.0044	39.33	16.47	55.80	74.00	-18.20	Vertical
5	16944.7431	37.66	16.84	54.50	74.00	-19.50	Vertical
6	17698.0873	37.41	19.24	56.65	74.00	-17.35	Vertical
7	17942.4928	35.36	20.35	55.71	74.00	-18.29	Vertical

#### AV Result:

No.	Frequency [MHz]	Reading Level [dBuV]	Correct Factor [dB/m]	Result [dBuV/m]	Limit [dBuV/m]	Margin [dB]	Remark
1	10358.7323	40.63	6.72	47.35	54.00	-6.65	Vertical
2	16535.0044	27.80	16.47	44.27	54.00	-9.73	Vertical
3	16944.7431	26.23	16.84	43.07	54.00	-10.93	Vertical
4	17698.0873	27.25	19.24	46.49	54.00	-7.51	Vertical
5	17942.4928	25.10	20.35	45.45	54.00	-8.55	Vertical

Remark: 1. Measurement = Reading Level + Correct Factor.

2. If Peak Result complies with AV limit, AV Result is deemed to comply with AV limit.

3. Test setup: RBW: 1 MHz, VBW: 3 MHz, Sweep time: auto.

4. Peak: Peak detector.

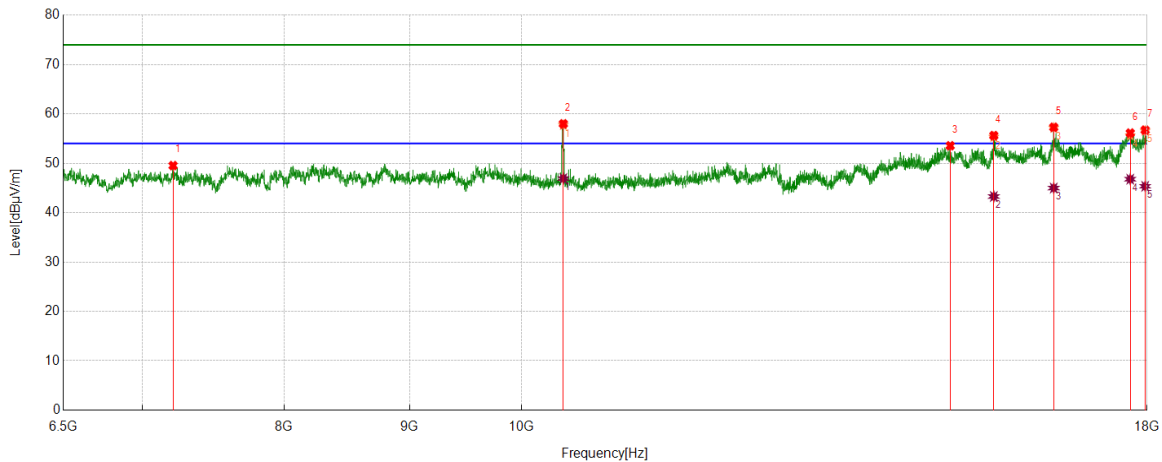
5. AVG: VBW refer to section 6.2.

6. For above 6.5GHz part, filter losses were only considered in the spurious frequency bands and the authorized band were not corrected for HPF losses. The proper operation of the transmitter prior to adding the filter to the measurement chain.

7. Only the worst case emission was recorded, if it complies with the limit, the other emissions deemed to comply with the limit.

8. Since non-restricted band peak emissions are less than the average limit, they also comply with the -27 dBm/MHz (68.2 dBuV/m) limit.

Test Mode	Channel	Polarization	Verdict
11ac VHT20	5200	Horizontal	PASS



#### PK Result:

No.	Frequency [MHz]	Reading Level [dBuV]	Correct Factor [dB/m]	Result [dBuV/m]	Limit [dBuV/m]	Margin [dB]	Remark
1	7207.3384	45.43	4.10	49.53	74.00	-24.47	Horizontal
2	10400.4251	51.16	6.83	57.99	74.00	-16.01	Horizontal
3	14960.7451	40.80	12.75	53.55	74.00	-20.45	Horizontal
4	15586.1358	42.11	13.50	55.61	74.00	-18.39	Horizontal
5	16488.9986	40.61	16.68	57.29	74.00	-16.71	Horizontal
6	17718.2148	36.66	19.46	56.12	74.00	-17.88	Horizontal
7	17968.3710	36.20	20.52	56.72	74.00	-17.28	Horizontal

#### AV Result:

No.	Frequency [MHz]	Reading Level [dBuV]	Correct Factor [dB/m]	Result [dBuV/m]	Limit [dBuV/m]	Margin [dB]	Remark
1	10400.4251	40.08	6.83	46.91	54.00	-7.09	Horizontal
2	15586.1358	29.77	13.50	43.27	54.00	-10.73	Horizontal
3	16488.9986	28.30	16.68	44.98	54.00	-9.02	Horizontal
4	17718.2148	27.32	19.46	46.78	54.00	-7.22	Horizontal
5	17968.3710	24.82	20.52	45.34	54.00	-8.66	Horizontal

Remark: 1. Measurement = Reading Level + Correct Factor.

2. If Peak Result complies with AV limit, AV Result is deemed to comply with AV limit.

3. Test setup: RBW: 1 MHz, VBW: 3 MHz, Sweep time: auto.

4. Peak: Peak detector.

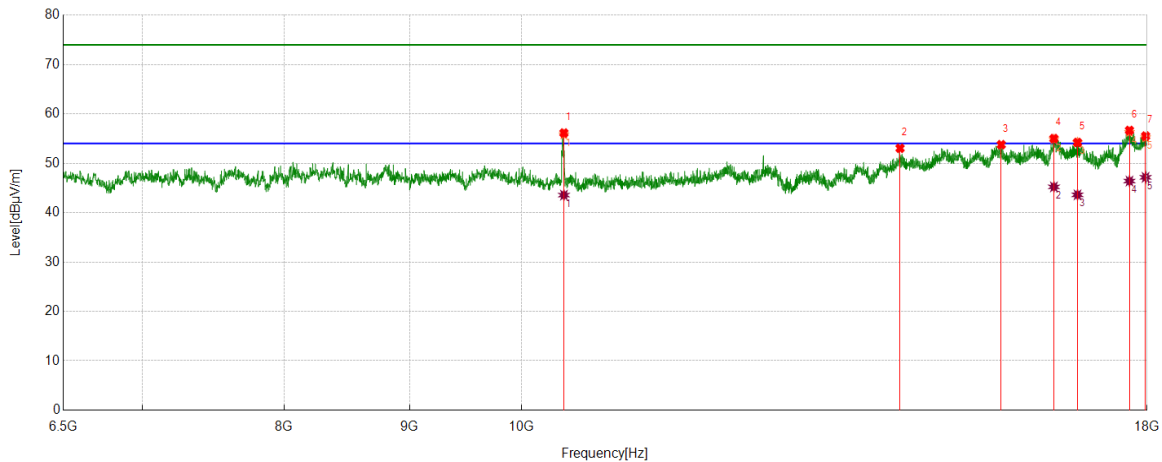
5. AVG: VBW refer to section 6.2.

6. For above 6.5GHz part, filter losses were only considered in the spurious frequency bands and the authorized band were not corrected for HPF losses. The proper operation of the transmitter prior to adding the filter to the measurement chain.

7. Only the worst case emission was recorded, if it complies with the limit, the other emissions deemed to comply with the limit.

8. Since non-restricted band peak emissions are less than the average limit, they also comply with the -27 dBm/MHz (68.2 dBuV/m) limit.

Test Mode	Channel	Polarization	Verdict
11ac VHT20	5200	Vertical	PASS



#### PK Result:

No.	Frequency [MHz]	Reading Level [dBuV]	Correct Factor [dB/m]	Result [dBuV/m]	Limit [dBuV/m]	Margin [dB]	Remark
1	10406.1758	49.36	6.77	56.13	74.00	-17.87	Vertical
2	14272.0965	40.88	12.16	53.04	74.00	-20.96	Vertical
3	15695.3994	39.70	14.06	53.76	74.00	-20.24	Vertical
4	16491.8740	38.34	16.66	55.00	74.00	-19.00	Vertical
5	16861.3577	37.19	17.02	54.21	74.00	-19.79	Vertical
6	17705.2757	37.33	19.32	56.65	74.00	-17.35	Vertical
7	17975.5594	34.91	20.60	55.51	74.00	-18.49	Vertical

#### AV Result:

No.	Frequency [MHz]	Reading Level [dBuV]	Correct Factor [dB/m]	Result [dBuV/m]	Limit [dBuV/m]	Margin [dB]	Remark
1	10406.1758	36.78	6.77	43.55	54.00	-10.45	Vertical
2	16491.8740	28.56	16.66	45.22	54.00	-8.78	Vertical
3	16861.3577	26.59	17.02	43.61	54.00	-10.39	Vertical
4	17705.2757	27.08	19.32	46.40	54.00	-7.60	Vertical
5	17975.5594	26.55	20.60	47.15	54.00	-6.85	Vertical

Remark: 1. Measurement = Reading Level + Correct Factor.

2. If Peak Result complies with AV limit, AV Result is deemed to comply with AV limit.

3. Test setup: RBW: 1 MHz, VBW: 3 MHz, Sweep time: auto.

4. Peak: Peak detector.

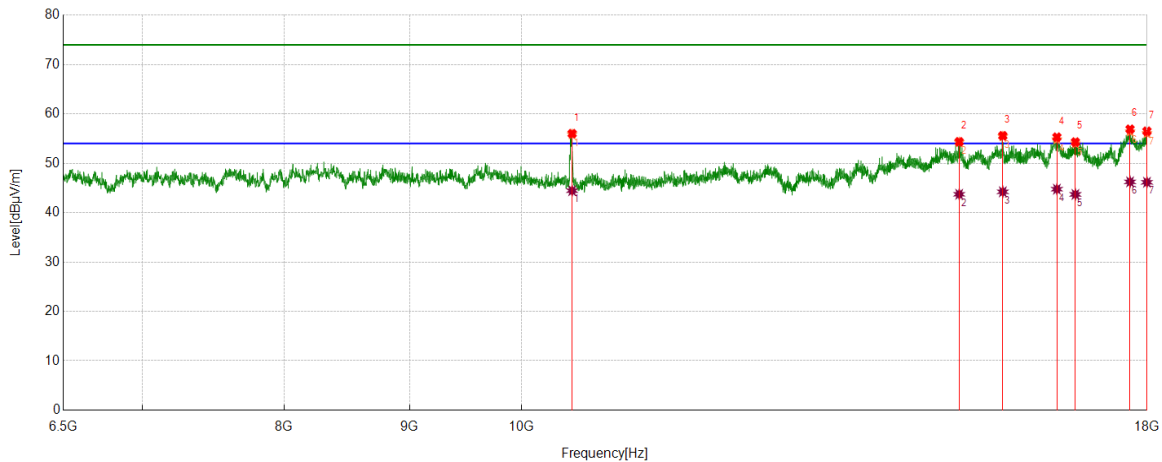
5. AVG: VBW refer to section 6.2.

6. For above 6.5GHz part, filter losses were only considered in the spurious frequency bands and the authorized band were not corrected for HPF losses. The proper operation of the transmitter prior to adding the filter to the measurement chain.

7. Only the worst case emission was recorded, if it complies with the limit, the other emissions deemed to comply with the limit.

8. Since non-restricted band peak emissions are less than the average limit, they also comply with the -27 dBm/MHz (68.2 dBuV/m) limit.

Test Mode	Channel	Polarization	Verdict
11ac VHT20	5240	Horizontal	PASS



#### PK Result:

No.	Frequency [MHz]	Reading Level [dBuV]	Correct Factor [dB/m]	Result [dBuV/m]	Limit [dBuV/m]	Margin [dB]	Remark
1	10486.6858	48.93	7.07	56.00	74.00	-18.00	Horizontal
2	15087.2609	41.17	13.18	54.35	74.00	-19.65	Horizontal
3	15718.4023	41.31	14.26	55.57	74.00	-18.43	Horizontal
4	16537.8797	38.77	16.52	55.29	74.00	-18.71	Horizontal
5	16828.2910	37.26	17.04	54.30	74.00	-19.70	Horizontal
6	17715.3394	37.48	19.42	56.90	74.00	-17.10	Horizontal
7	17998.5623	35.94	20.55	56.49	74.00	-17.51	Horizontal

#### AV Result:

No.	Frequency [MHz]	Reading Level [dBuV]	Correct Factor [dB/m]	Result [dBuV/m]	Limit [dBuV/m]	Margin [dB]	Remark
1	10486.6858	37.38	7.07	44.45	54.00	-9.55	Horizontal
2	15087.2609	30.54	13.18	43.72	54.00	-10.28	Horizontal
3	15718.4023	29.96	14.26	44.22	54.00	-9.78	Horizontal
4	16537.8797	28.23	16.52	44.75	54.00	-9.25	Horizontal
5	16828.2910	26.65	17.04	43.69	54.00	-10.31	Horizontal
6	17715.3394	26.81	19.42	46.23	54.00	-7.77	Horizontal
7	17998.5623	25.60	20.55	46.15	54.00	-7.85	Horizontal

Remark: 1. Measurement = Reading Level + Correct Factor.

2. If Peak Result complies with AV limit, AV Result is deemed to comply with AV limit.

3. Test setup: RBW: 1 MHz, VBW: 3 MHz, Sweep time: auto.

4. Peak: Peak detector.

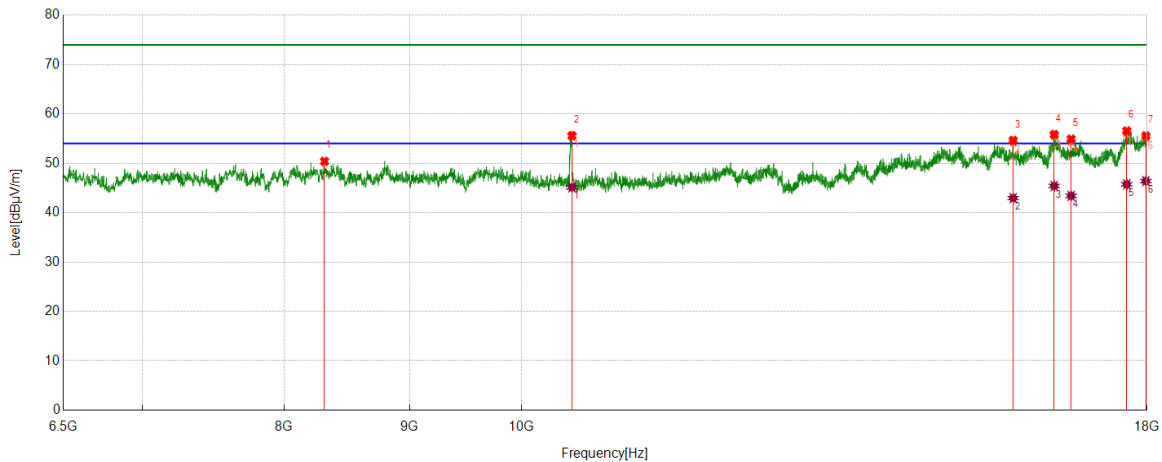
5. AVG: VBW refer to section 6.2.

6. For above 6.5GHz part, filter losses were only considered in the spurious frequency bands and the authorized band were not corrected for HPF losses. The proper operation of the transmitter prior to adding the filter to the measurement chain.

7. Only the worst case emission was recorded, if it complies with the limit, the other emissions deemed to comply with the limit.

8. Since non-restricted band peak emissions are less than the average limit, they also comply with the -27 dBm/MHz (68.2 dBuV/m) limit.

Test Mode	Channel	Polarization	Verdict
11ac VHT20	5240	Vertical	PASS



#### PK Result:

No.	Frequency [MHz]	Reading Level [dBuV]	Correct Factor [dB/m]	Result [dBuV/m]	Limit [dBuV/m]	Margin [dB]	Remark
1	8310.0388	44.07	6.32	50.39	74.00	-23.61	Vertical
2	10485.2482	48.54	7.05	55.59	74.00	-18.41	Vertical
3	15872.2340	39.77	14.85	54.62	74.00	-19.38	Vertical
4	16496.1870	39.24	16.57	55.81	74.00	-18.19	Vertical
5	16760.7201	38.23	16.66	54.89	74.00	-19.11	Vertical
6	17660.7076	37.66	18.87	56.53	74.00	-17.47	Vertical
7	17979.8725	34.86	20.67	55.53	74.00	-18.47	Vertical

#### AV Result:

No.	Frequency [MHz]	Reading Level [dBuV]	Correct Factor [dB/m]	Result [dBuV/m]	Limit [dBuV/m]	Margin [dB]	Remark
1	10485.2482	38.06	7.05	45.11	54.00	-8.89	Vertical
2	15872.2340	28.10	14.85	42.95	54.00	-11.05	Vertical
3	16496.1870	28.84	16.57	45.41	54.00	-8.59	Vertical
4	16760.7201	26.74	16.66	43.40	54.00	-10.60	Vertical
5	17660.7076	26.87	18.87	45.74	54.00	-8.26	Vertical
6	17979.8725	25.72	20.67	46.39	54.00	-7.61	Vertical

Remark: 1. Measurement = Reading Level + Correct Factor.

2. If Peak Result complies with AV limit, AV Result is deemed to comply with AV limit.

3. Test setup: RBW: 1 MHz, VBW: 3 MHz, Sweep time: auto.

4. Peak: Peak detector.

5. AVG: VBW refer to section 6.2.

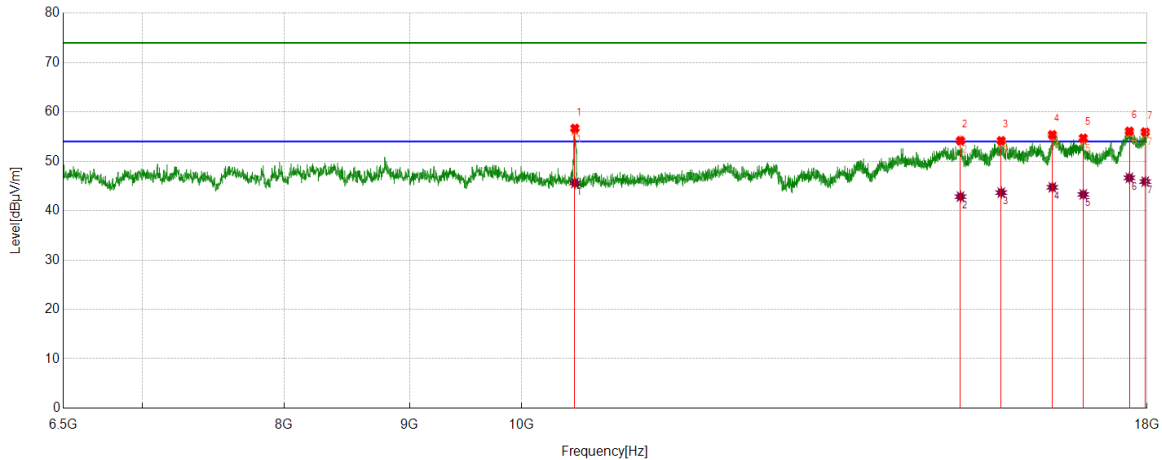
6. For above 6.5GHz part, filter losses were only considered in the spurious frequency bands and the authorized band were not corrected for HPF losses. The proper operation of the transmitter prior to adding the filter to the measurement chain.

7. Only the worst case emission was recorded, if it complies with the limit, the other emissions deemed to comply with the limit.

8. Since non-restricted band peak emissions are less than the average limit, they also comply with the -27 dBm/MHz (68.2 dBuV/m) limit.



Test Mode	Channel	Polarization	Verdict
11ac VHT20	5260	Horizontal	PASS



**PK Result:**

No.	Frequency [MHz]	Reading Level [dBuV]	Correct Factor [dB/m]	Result [dBuV/m]	Limit [dBuV/m]	Margin [dB]	Remark
1	10514.0018	49.64	7.02	56.66	74.00	-17.34	Horizontal
2	15105.9507	40.97	13.19	54.16	74.00	-19.84	Horizontal
3	15695.3994	40.10	14.06	54.16	74.00	-19.84	Horizontal
4	16467.4334	38.92	16.44	55.36	74.00	-18.64	Horizontal
5	16953.3692	37.81	16.86	54.67	74.00	-19.33	Horizontal
6	17703.8380	36.76	19.31	56.07	74.00	-17.93	Horizontal
7	17969.8087	35.40	20.52	55.92	74.00	-18.08	Horizontal

**AV Result:**

No.	Frequency [MHz]	Reading Level [dBuV]	Correct Factor [dB/m]	Result [dBuV/m]	Limit [dBuV/m]	Margin [dB]	Remark
1	10514.0018	38.57	7.02	45.59	54.00	-8.41	Horizontal
2	15105.9507	29.65	13.19	42.84	54.00	-11.16	Horizontal
3	15695.3994	29.59	14.06	43.65	54.00	-10.35	Horizontal
4	16467.4334	28.29	16.44	44.73	54.00	-9.27	Horizontal
5	16953.3692	26.42	16.86	43.28	54.00	-10.72	Horizontal
6	17703.8380	27.33	19.31	46.64	54.00	-7.36	Horizontal
7	17969.8087	25.36	20.52	45.88	54.00	-8.12	Horizontal

Remark: 1. Measurement = Reading Level + Correct Factor.

2. If Peak Result complies with AV limit, AV Result is deemed to comply with AV limit.

3. Test setup: RBW: 1 MHz, VBW: 3 MHz, Sweep time: auto.

4. Peak: Peak detector.

5. AVG: VBW refer to section 6.2.

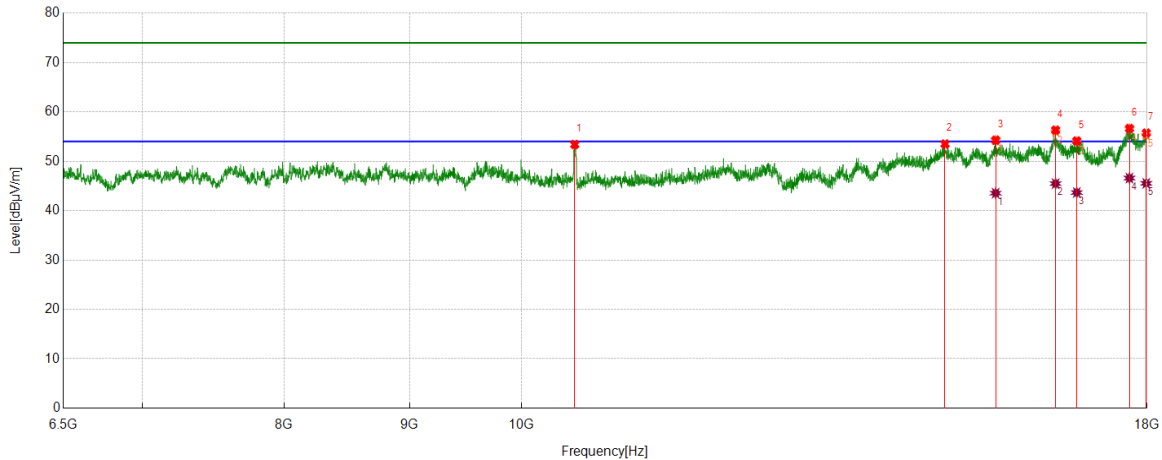
6. For above 6.5GHz part, filter losses were only considered in the spurious frequency bands and the authorized band were not corrected for HPF losses. The proper operation of the transmitter prior to adding the filter to the measurement chain.

7. Only the worst case emission was recorded, if it complies with the limit, the other emissions deemed to comply with the limit.

8. Since non-restricted band peak emissions are less than the average limit, they also comply with the -27 dBm/MHz (68.2 dBuV/m) limit.



Test Mode	Channel	Polarization	Verdict
11ac VHT20	5260	Vertical	PASS



#### PK Result:

No.	Frequency [MHz]	Reading Level [dBuV]	Correct Factor [dB/m]	Result [dBuV/m]	Limit [dBuV/m]	Margin [dB]	Remark
1	10512.5641	46.37	7.03	53.40	74.00	-20.60	Vertical
2	14887.4234	40.74	12.76	53.50	74.00	-20.50	Vertical
3	15613.4517	40.72	13.55	54.27	74.00	-19.73	Vertical
4	16517.7522	39.64	16.67	56.31	74.00	-17.69	Vertical
5	16849.8562	37.31	16.80	54.11	74.00	-19.89	Vertical
6	17705.2757	37.32	19.32	56.64	74.00	-17.36	Vertical
7	17987.0609	35.08	20.64	55.72	74.00	-18.28	Vertical

#### AV Result:

No.	Frequency [MHz]	Reading Level [dBuV]	Correct Factor [dB/m]	Result [dBuV/m]	Limit [dBuV/m]	Margin [dB]	Remark
1	15613.4517	29.99	13.55	43.54	54.00	-10.46	Vertical
2	16517.7522	28.81	16.67	45.48	54.00	-8.52	Vertical
3	16849.8562	26.87	16.80	43.67	54.00	-10.33	Vertical
4	17705.2757	27.28	19.32	46.60	54.00	-7.40	Vertical
5	17987.0609	24.89	20.64	45.53	54.00	-8.47	Vertical

Remark: 1. Measurement = Reading Level + Correct Factor.

2. If Peak Result complies with AV limit, AV Result is deemed to comply with AV limit.

3. Test setup: RBW: 1 MHz, VBW: 3 MHz, Sweep time: auto.

4. Peak: Peak detector.

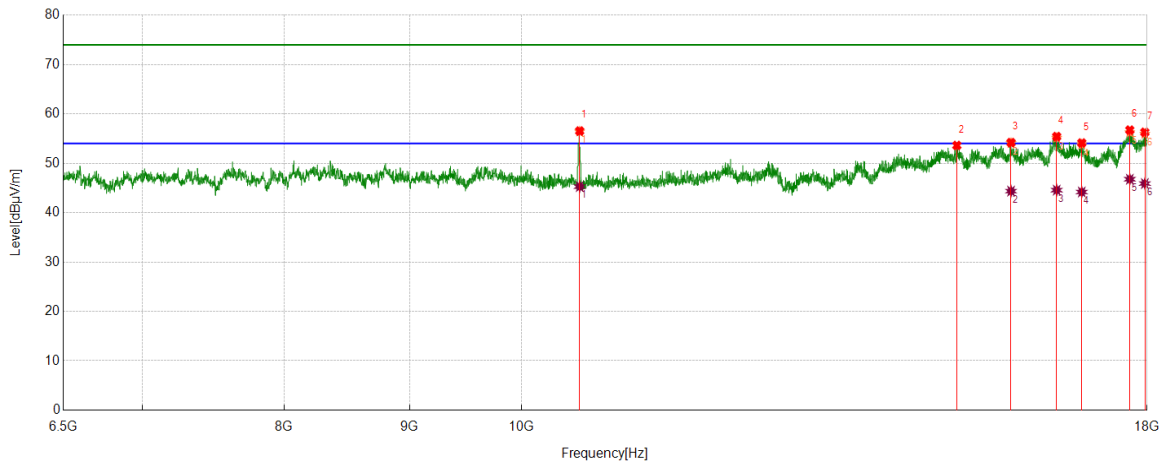
5. AVG: VBW refer to section 6.2.

6. For above 6.5GHz part, filter losses were only considered in the spurious frequency bands and the authorized band were not corrected for HPF losses. The proper operation of the transmitter prior to adding the filter to the measurement chain.

7. Only the worst case emission was recorded, if it complies with the limit, the other emissions deemed to comply with the limit.

8. Since non-restricted band peak emissions are less than the average limit, they also comply with the -27 dBm/MHz (68.2 dBuV/m) limit.

Test Mode	Channel	Polarization	Verdict
11ac VHT20	5280	Horizontal	PASS



#### PK Result:

No.	Frequency [MHz]	Reading Level [dBuV]	Correct Factor [dB/m]	Result [dBuV/m]	Limit [dBuV/m]	Margin [dB]	Remark
1	10561.4452	49.76	6.77	56.53	74.00	-17.47	Horizontal
2	15054.1943	40.62	12.99	53.61	74.00	-20.39	Horizontal
3	15840.6051	39.45	14.74	54.19	74.00	-19.81	Horizontal
4	16535.0044	38.94	16.47	55.41	74.00	-18.59	Horizontal
5	16928.9286	37.33	16.78	54.11	74.00	-19.89	Horizontal
6	17711.0264	37.35	19.37	56.72	74.00	-17.28	Horizontal
7	17962.6203	35.74	20.54	56.28	74.00	-17.72	Horizontal

#### AV Result:

No.	Frequency [MHz]	Reading Level [dBuV]	Correct Factor [dB/m]	Result [dBuV/m]	Limit [dBuV/m]	Margin [dB]	Remark
1	10561.4452	38.51	6.77	45.28	54.00	-8.72	Horizontal
2	15840.6051	29.62	14.74	44.36	54.00	-9.64	Horizontal
3	16535.0044	28.09	16.47	44.56	54.00	-9.44	Horizontal
4	16928.9286	27.40	16.78	44.18	54.00	-9.82	Horizontal
5	17711.0264	27.40	19.37	46.77	54.00	-7.23	Horizontal
6	17962.6203	25.35	20.54	45.89	54.00	-8.11	Horizontal

Remark: 1. Measurement = Reading Level + Correct Factor.

2. If Peak Result complies with AV limit, AV Result is deemed to comply with AV limit.

3. Test setup: RBW: 1 MHz, VBW: 3 MHz, Sweep time: auto.

4. Peak: Peak detector.

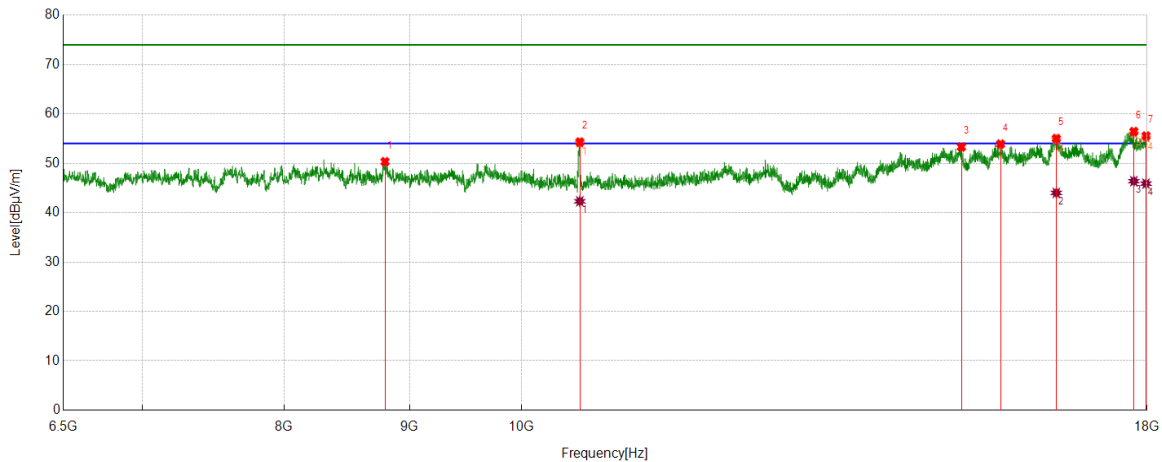
5. AVG: VBW refer to section 6.2.

6. For above 6.5GHz part, filter losses were only considered in the spurious frequency bands and the authorized band were not corrected for HPF losses. The proper operation of the transmitter prior to adding the filter to the measurement chain.

7. Only the worst case emission was recorded, if it complies with the limit, the other emissions deemed to comply with the limit.

8. Since non-restricted band peak emissions are less than the average limit, they also comply with the -27 dBm/MHz (68.2 dBuV/m) limit.

Test Mode	Channel	Polarization	Verdict
11ac VHT20	5280	Vertical	PASS



#### PK Result:

No.	Frequency [MHz]	Reading Level [dBuV]	Correct Factor [dB/m]	Result [dBuV/m]	Limit [dBuV/m]	Margin [dB]	Remark
1	8795.9745	44.02	6.30	50.32	74.00	-23.68	Vertical
2	10562.8829	47.49	6.81	54.30	74.00	-19.70	Vertical
3	15118.8899	40.13	13.17	53.30	74.00	-20.70	Vertical
4	15685.3357	39.88	14.01	53.89	74.00	-20.11	Vertical
5	16529.2537	38.60	16.41	55.01	74.00	-18.99	Vertical
6	17778.5973	36.78	19.65	56.43	74.00	-17.57	Vertical
7	17982.7478	34.87	20.66	55.53	74.00	-18.47	Vertical

#### AV Result:

No.	Frequency [MHz]	Reading Level [dBuV]	Correct Factor [dB/m]	Result [dBuV/m]	Limit [dBuV/m]	Margin [dB]	Remark
1	10562.8829	35.49	6.81	42.30	54.00	-11.70	Vertical
2	16529.2537	27.59	16.41	44.00	54.00	-10.00	Vertical
3	17778.5973	26.72	19.65	46.37	54.00	-7.63	Vertical
4	17982.7478	25.22	20.66	45.88	54.00	-8.12	Vertical

Remark: 1. Measurement = Reading Level + Correct Factor.

2. If Peak Result complies with AV limit, AV Result is deemed to comply with AV limit.

3. Test setup: RBW: 1 MHz, VBW: 3 MHz, Sweep time: auto.

4. Peak: Peak detector.

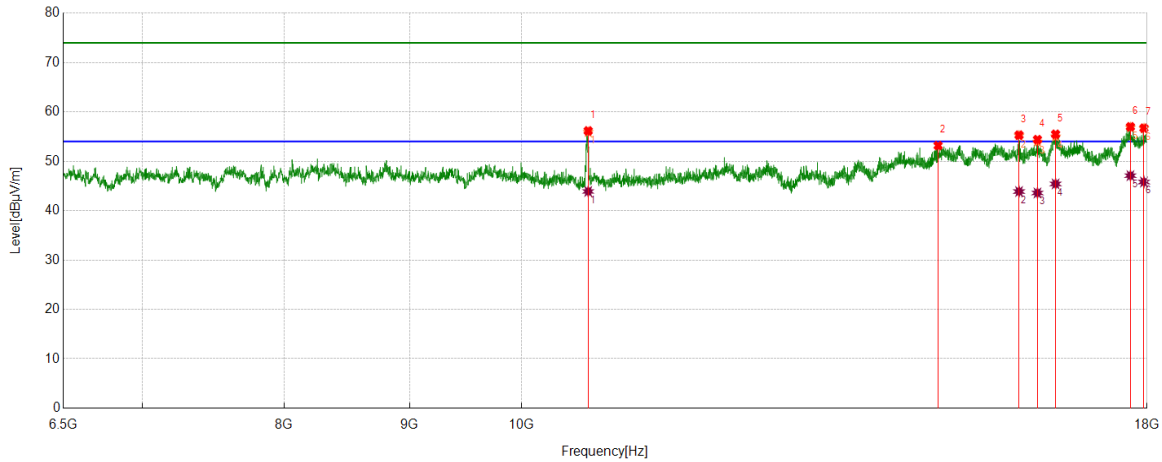
5. AVG: VBW refer to section 6.2.

6. For above 6.5GHz part, filter losses were only considered in the spurious frequency bands and the authorized band were not corrected for HPF losses. The proper operation of the transmitter prior to adding the filter to the measurement chain.

7. Only the worst case emission was recorded, if it complies with the limit, the other emissions deemed to comply with the limit.

8. Since non-restricted band peak emissions are less than the average limit, they also comply with the -27 dBm/MHz (68.2 dBuV/m) limit.

Test Mode	Channel	Polarization	Verdict
11ac VHT20	5320	Horizontal	PASS



#### PK Result:

No.	Frequency [MHz]	Reading Level [dBuV]	Correct Factor [dB/m]	Result [dBuV/m]	Limit [dBuV/m]	Margin [dB]	Remark
1	10646.2683	49.43	6.73	56.16	74.00	-17.84	Horizontal
2	14791.0989	40.40	12.77	53.17	74.00	-20.83	Horizontal
3	15959.9325	40.39	14.91	55.30	74.00	-18.70	Horizontal
4	16238.8424	38.76	15.63	54.39	74.00	-19.61	Horizontal
5	16517.7522	38.80	16.67	55.47	74.00	-18.53	Horizontal
6	17721.0901	37.51	19.48	56.99	74.00	-17.01	Horizontal
7	17948.2435	36.29	20.42	56.71	74.00	-17.29	Horizontal

#### AV Result:

No.	Frequency [MHz]	Reading Level [dBuV]	Correct Factor [dB/m]	Result [dBuV/m]	Limit [dBuV/m]	Margin [dB]	Remark
1	10646.2683	37.16	6.73	43.89	54.00	-10.11	Horizontal
2	15959.9325	28.96	14.91	43.87	54.00	-10.13	Horizontal
3	16238.8424	27.95	15.63	43.58	54.00	-10.42	Horizontal
4	16517.7522	28.74	16.67	45.41	54.00	-8.59	Horizontal
5	17721.0901	27.61	19.48	47.09	54.00	-6.91	Horizontal
6	17948.2435	25.38	20.42	45.80	54.00	-8.20	Horizontal

Remark: 1. Measurement = Reading Level + Correct Factor.

2. If Peak Result complies with AV limit, AV Result is deemed to comply with AV limit.

3. Test setup: RBW: 1 MHz, VBW: 3 MHz, Sweep time: auto.

4. Peak: Peak detector.

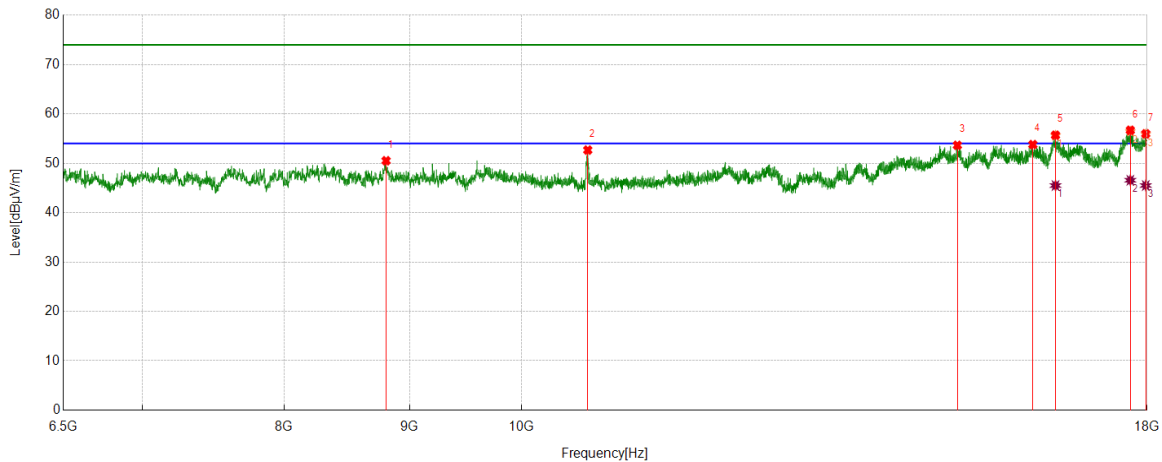
5. AVG: VBW refer to section 6.2.

6. For above 6.5GHz part, filter losses were only considered in the spurious frequency bands and the authorized band were not corrected for HPF losses. The proper operation of the transmitter prior to adding the filter to the measurement chain.

7. Only the worst case emission was recorded, if it complies with the limit, the other emissions deemed to comply with the limit.

8. Since non-restricted band peak emissions are less than the average limit, they also comply with the -27 dBm/MHz (68.2 dBuV/m) limit.

Test Mode	Channel	Polarization	Verdict
11ac VHT20	5320	Vertical	PASS



#### PK Result:

No.	Frequency [MHz]	Reading Level [dBuV]	Correct Factor [dB/m]	Result [dBuV/m]	Limit [dBuV/m]	Margin [dB]	Remark
1	8804.6006	44.17	6.34	50.51	74.00	-23.49	Vertical
2	10641.9552	45.95	6.72	52.67	74.00	-21.33	Vertical
3	15061.3827	40.61	13.03	53.64	74.00	-20.36	Vertical
4	16168.3960	38.15	15.64	53.79	74.00	-20.21	Vertical
5	16516.3145	39.01	16.68	55.69	74.00	-18.31	Vertical
6	17719.6525	37.21	19.48	56.69	74.00	-17.31	Vertical
7	17978.4348	35.32	20.65	55.97	74.00	-18.03	Vertical

#### AV Result:

No.	Frequency [MHz]	Reading Level [dBuV]	Correct Factor [dB/m]	Result [dBuV/m]	Limit [dBuV/m]	Margin [dB]	Remark
1	16516.3145	28.81	16.68	45.49	54.00	-8.51	Vertical
2	17719.6525	27.08	19.48	46.56	54.00	-7.44	Vertical
3	17978.4348	24.85	20.65	45.50	54.00	-8.50	Vertical

Remark: 1. Measurement = Reading Level + Correct Factor.

2. If Peak Result complies with AV limit, AV Result is deemed to comply with AV limit.

3. Test setup: RBW: 1 MHz, VBW: 3 MHz, Sweep time: auto.

4. Peak: Peak detector.

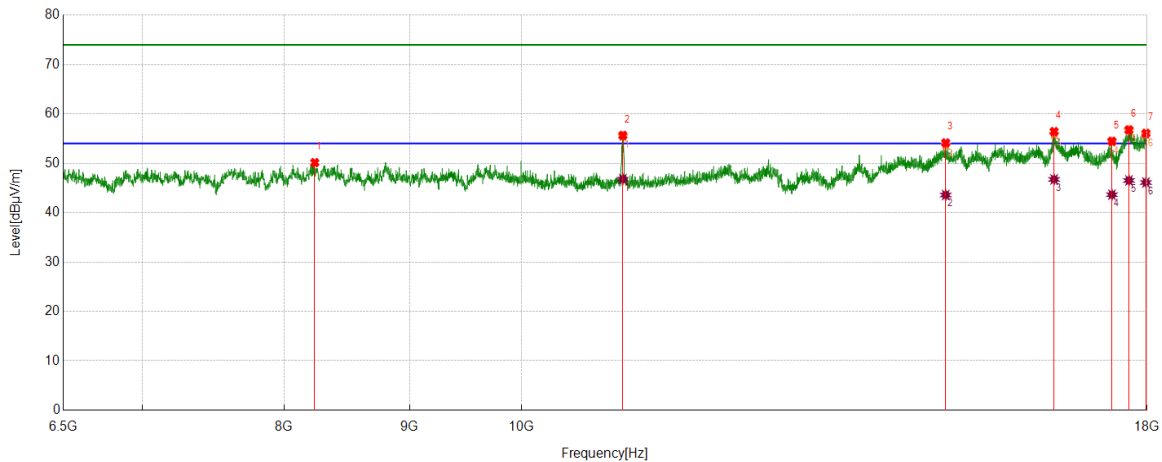
5. AVG: VBW refer to section 6.2.

6. For above 6.5GHz part, filter losses were only considered in the spurious frequency bands and the authorized band were not corrected for HPF losses. The proper operation of the transmitter prior to adding the filter to the measurement chain.

7. Only the worst case emission was recorded, if it complies with the limit, the other emissions deemed to comply with the limit.

8. Since non-restricted band peak emissions are less than the average limit, they also comply with the -27 dBm/MHz (68.2 dBuV/m) limit.

Test Mode	Channel	Polarization	Verdict
11ac VHT20	5500	Horizontal	PASS



#### PK Result:

No.	Frequency [MHz]	Reading Level [dBuV]	Correct Factor [dB/m]	Result [dBuV/m]	Limit [dBuV/m]	Margin [dB]	Remark
1	8233.8417	44.13	6.00	50.13	74.00	-23.87	Horizontal
2	10998.4998	48.47	7.17	55.64	74.00	-18.36	Horizontal
3	14897.4872	41.39	12.74	54.13	74.00	-19.87	Horizontal
4	16494.7493	39.80	16.61	56.41	74.00	-17.59	Horizontal
5	17416.3020	36.28	18.17	54.45	74.00	-19.55	Horizontal
6	17696.6496	37.53	19.22	56.75	74.00	-17.25	Horizontal
7	17981.3102	35.41	20.66	56.07	74.00	-17.93	Horizontal

#### AV Result:

No.	Frequency [MHz]	Reading Level [dBuV]	Correct Factor [dB/m]	Result [dBuV/m]	Limit [dBuV/m]	Margin [dB]	Remark
1	10998.4998	39.61	7.17	46.78	54.00	-7.22	Horizontal
2	14897.4872	30.83	12.74	43.57	54.00	-10.43	Horizontal
3	16494.7493	30.12	16.61	46.73	54.00	-7.27	Horizontal
4	17416.3020	25.47	18.17	43.64	54.00	-10.36	Horizontal
5	17696.6496	27.30	19.22	46.52	54.00	-7.48	Horizontal
6	17981.3102	25.44	20.66	46.10	54.00	-7.90	Horizontal

Remark: 1. Measurement = Reading Level + Correct Factor.

2. If Peak Result complies with AV limit, AV Result is deemed to comply with AV limit.

3. Test setup: RBW: 1 MHz, VBW: 3 MHz, Sweep time: auto.

4. Peak: Peak detector.

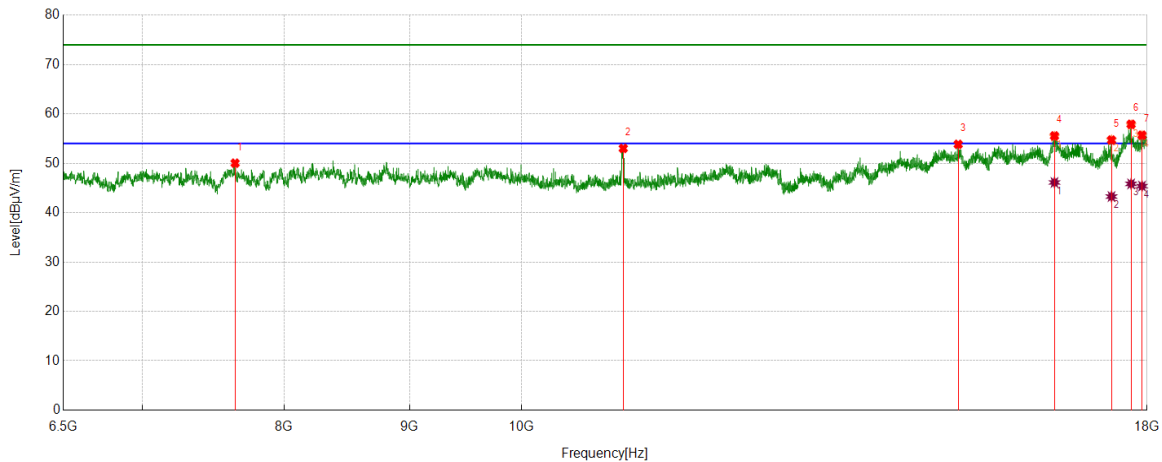
5. AVG: VBW refer to section 6.2.

6. For above 6.5GHz part, filter losses were only considered in the spurious frequency bands and the authorized band were not corrected for HPF losses. The proper operation of the transmitter prior to adding the filter to the measurement chain.

7. Only the worst case emission was recorded, if it complies with the limit, the other emissions deemed to comply with the limit.

8. Since non-restricted band peak emissions are less than the average limit, they also comply with the -27 dBm/MHz (68.2 dBuV/m) limit.

Test Mode	Channel	Polarization	Verdict
11ac VHT20	5500	Vertical	PASS



#### PK Result:

No.	Frequency [MHz]	Reading Level [dBuV]	Correct Factor [dB/m]	Result [dBuV/m]	Limit [dBuV/m]	Margin [dB]	Remark
1	7640.0800	44.74	5.28	50.02	74.00	-23.98	Vertical
2	11002.8129	45.83	7.18	53.01	74.00	-20.99	Vertical
3	15072.8841	40.75	13.09	53.84	74.00	-20.16	Vertical
4	16500.5001	39.02	16.52	55.54	74.00	-18.46	Vertical
5	17409.1136	36.50	18.20	54.70	74.00	-19.30	Vertical
6	17732.5916	38.36	19.54	57.90	74.00	-16.10	Vertical
7	17915.1769	35.68	20.01	55.69	74.00	-18.31	Vertical

#### AV Result:

No.	Frequency [MHz]	Reading Level [dBuV]	Correct Factor [dB/m]	Result [dBuV/m]	Limit [dBuV/m]	Margin [dB]	Remark
1	16500.5001	29.59	16.52	46.11	54.00	-7.89	Vertical
2	17409.1136	25.06	18.20	43.26	54.00	-10.74	Vertical
3	17732.5916	26.29	19.54	45.83	54.00	-8.17	Vertical
4	17915.1769	25.37	20.01	45.38	54.00	-8.62	Vertical

Remark: 1. Measurement = Reading Level + Correct Factor.

2. If Peak Result complies with AV limit, AV Result is deemed to comply with AV limit.

3. Test setup: RBW: 1 MHz, VBW: 3 MHz, Sweep time: auto.

4. Peak: Peak detector.

5. AVG: VBW refer to section 6.2.

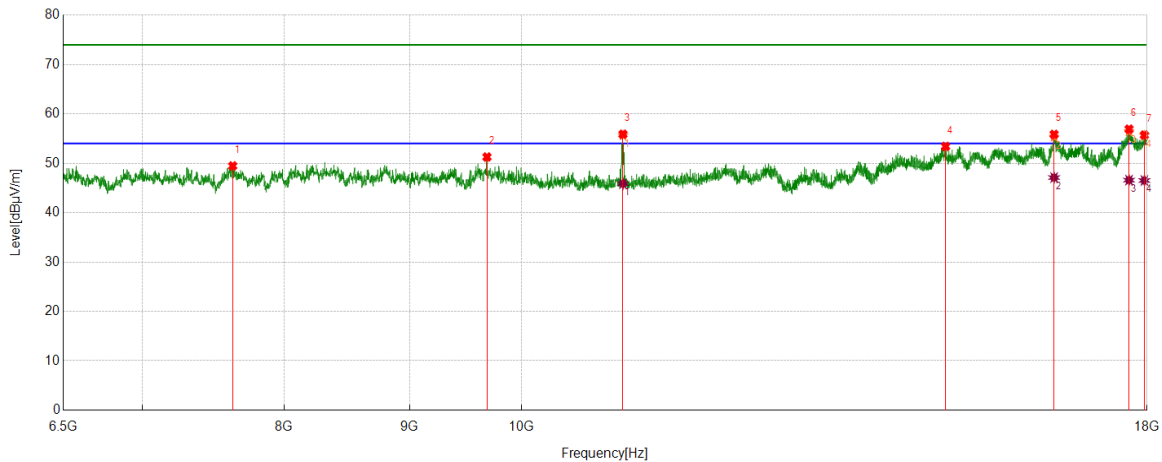
6. For above 6.5GHz part, filter losses were only considered in the spurious frequency bands and the authorized band were not corrected for HPF losses. The proper operation of the transmitter prior to adding the filter to the measurement chain.

7. Only the worst case emission was recorded, if it complies with the limit, the other emissions deemed to comply with the limit.

8. Since non-restricted band peak emissions are less than the average limit, they also comply with the -27 dBm/MHz (68.2 dBuV/m) limit.



Test Mode	Channel	Polarization	Verdict
11ac VHT20	5580	Horizontal	PASS



#### PK Result:

No.	Frequency [MHz]	Reading Level [dBuV]	Correct Factor [dB/m]	Result [dBuV/m]	Limit [dBuV/m]	Margin [dB]	Remark
1	7622.8279	44.18	5.28	49.46	74.00	-24.54	Horizontal
2	9680.1475	44.82	6.45	51.27	74.00	-22.73	Horizontal
3	10999.9375	48.69	7.19	55.88	74.00	-18.12	Horizontal
4	14896.0495	40.66	12.75	53.41	74.00	-20.59	Horizontal
5	16494.7493	39.24	16.61	55.85	74.00	-18.15	Horizontal
6	17698.0873	37.67	19.24	56.91	74.00	-17.09	Horizontal
7	17955.4319	35.21	20.50	55.71	74.00	-18.29	Horizontal

#### AV Result:

No.	Frequency [MHz]	Reading Level [dBuV]	Correct Factor [dB/m]	Result [dBuV/m]	Limit [dBuV/m]	Margin [dB]	Remark
1	10999.9375	38.67	7.19	45.86	54.00	-8.14	Horizontal
2	16494.7493	30.49	16.61	47.10	54.00	-6.90	Horizontal
3	17698.0873	27.35	19.24	46.59	54.00	-7.41	Horizontal
4	17955.4319	26.01	20.50	46.51	54.00	-7.49	Horizontal

Remark: 1. Measurement = Reading Level + Correct Factor.

2. If Peak Result complies with AV limit, AV Result is deemed to comply with AV limit.

3. Test setup: RBW: 1 MHz, VBW: 3 MHz, Sweep time: auto.

4. Peak: Peak detector.

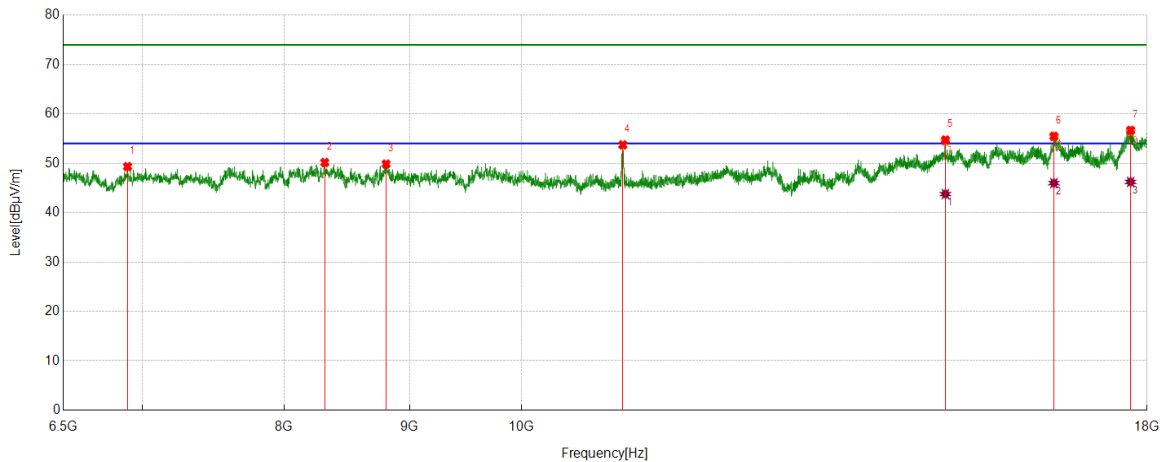
5. AVG: VBW refer to section 6.2.

6. For above 6.5GHz part, filter losses were only considered in the spurious frequency bands and the authorized band were not corrected for HPF losses. The proper operation of the transmitter prior to adding the filter to the measurement chain.

7. Only the worst case emission was recorded, if it complies with the limit, the other emissions deemed to comply with the limit.

8. Since non-restricted band peak emissions are less than the average limit, they also comply with the -27 dBm/MHz (68.2 dBuV/m) limit.

Test Mode	Channel	Polarization	Verdict
11ac VHT20	5580	Vertical	PASS



#### PK Result:

No.	Frequency [MHz]	Reading Level [dBuV]	Correct Factor [dB/m]	Result [dBuV/m]	Limit [dBuV/m]	Margin [dB]	Remark
1	6905.4257	45.44	3.89	49.33	74.00	-24.67	Vertical
2	8311.4764	43.89	6.27	50.16	74.00	-23.84	Vertical
3	8804.6006	43.50	6.34	49.84	74.00	-24.16	Vertical
4	10998.4998	46.56	7.17	53.73	74.00	-20.27	Vertical
5	14893.1741	41.95	12.76	54.71	74.00	-19.29	Vertical
6	16491.8740	38.81	16.66	55.47	74.00	-18.53	Vertical
7	17723.9655	37.17	19.50	56.67	74.00	-17.33	Vertical

#### AV Result:

No.	Frequency [MHz]	Reading Level [dBuV]	Correct Factor [dB/m]	Result [dBuV/m]	Limit [dBuV/m]	Margin [dB]	Remark
1	14893.1741	31.01	12.76	43.77	54.00	-10.23	Vertical
2	16491.8740	29.32	16.66	45.98	54.00	-8.02	Vertical
3	17723.9655	26.72	19.50	46.22	54.00	-7.78	Vertical

Remark: 1. Measurement = Reading Level + Correct Factor.

2. If Peak Result complies with AV limit, AV Result is deemed to comply with AV limit.

3. Test setup: RBW: 1 MHz, VBW: 3 MHz, Sweep time: auto.

4. Peak: Peak detector.

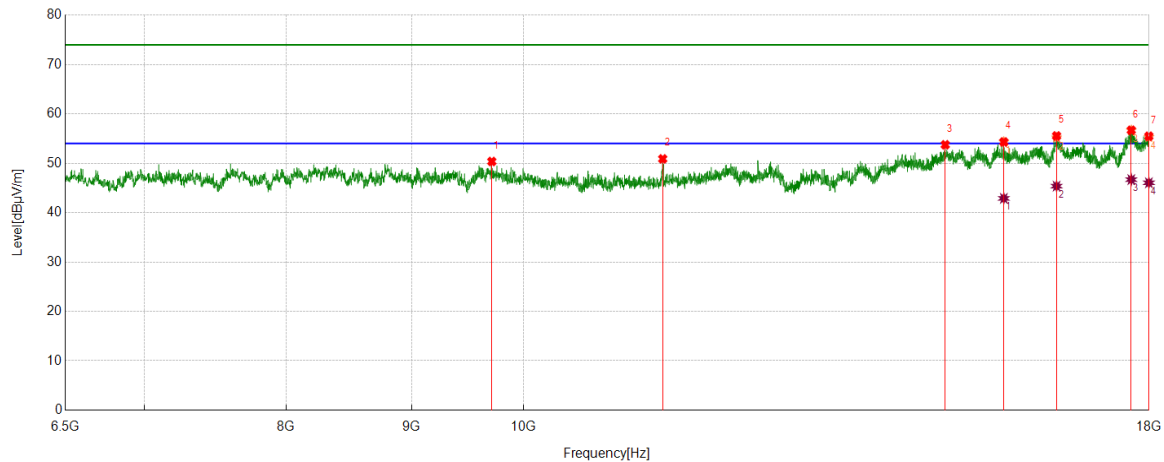
5. AVG: VBW refer to section 6.2.

6. For above 6.5GHz part, filter losses were only considered in the spurious frequency bands and the authorized band were not corrected for HPF losses. The proper operation of the transmitter prior to adding the filter to the measurement chain.

7. Only the worst case emission was recorded, if it complies with the limit, the other emissions deemed to comply with the limit.

8. Since non-restricted band peak emissions are less than the average limit, they also comply with the -27 dBm/MHz (68.2 dBuV/m) limit.

Test Mode	Channel	Polarization	Verdict
11ac VHT20	5700	Horizontal	PASS



#### PK Result:

No.	Frequency [MHz]	Reading Level [dBuV]	Correct Factor [dB/m]	Result [dBuV/m]	Limit [dBuV/m]	Margin [dB]	Remark
1	9706.0258	43.77	6.59	50.36	74.00	-23.64	Horizontal
2	11396.7371	43.68	7.21	50.89	74.00	-23.11	Horizontal
3	14862.9829	41.00	12.75	53.75	74.00	-20.25	Horizontal
4	15704.0255	40.15	14.17	54.32	74.00	-19.68	Horizontal
5	16501.9377	38.99	16.55	55.54	74.00	-18.46	Horizontal
6	17702.4003	37.40	19.29	56.69	74.00	-17.31	Horizontal
7	17997.1246	34.91	20.57	55.48	74.00	-18.52	Horizontal

#### AV Result:

No.	Frequency [MHz]	Reading Level [dBuV]	Correct Factor [dB/m]	Result [dBuV/m]	Limit [dBuV/m]	Margin [dB]	Remark
1	15704.0255	28.72	14.17	42.89	54.00	-11.11	Horizontal
2	16501.9377	28.82	16.55	45.37	54.00	-8.63	Horizontal
3	17702.4003	27.40	19.29	46.69	54.00	-7.31	Horizontal
4	17997.1246	25.48	20.57	46.05	54.00	-7.95	Horizontal

Remark: 1. Measurement = Reading Level + Correct Factor.

2. If Peak Result complies with AV limit, AV Result is deemed to comply with AV limit.

3. Test setup: RBW: 1 MHz, VBW: 3 MHz, Sweep time: auto.

4. Peak: Peak detector.

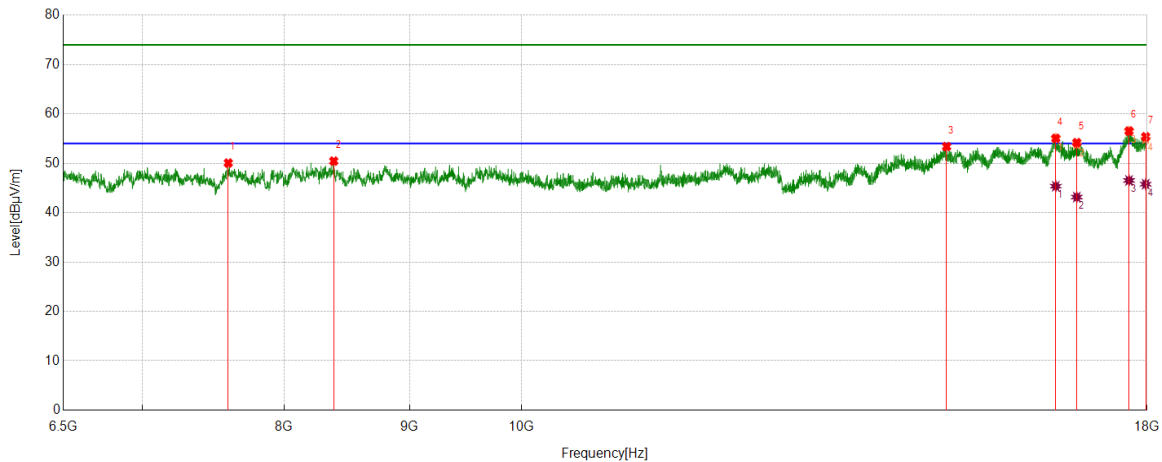
5. AVG: VBW refer to section 6.2.

6. For above 6.5GHz part, filter losses were only considered in the spurious frequency bands and the authorized band were not corrected for HPF losses. The proper operation of the transmitter prior to adding the filter to the measurement chain.

7. Only the worst case emission was recorded, if it complies with the limit, the other emissions deemed to comply with the limit.

8. Since non-restricted band peak emissions are less than the average limit, they also comply with the -27 dBm/MHz (68.2 dBuV/m) limit.

Test Mode	Channel	Polarization	Verdict
11ac VHT20	5700	Vertical	PASS



#### PK Result:

No.	Frequency [MHz]	Reading Level [dBuV]	Correct Factor [dB/m]	Result [dBuV/m]	Limit [dBuV/m]	Margin [dB]	Remark
1	7591.1989	44.93	5.12	50.05	74.00	-23.95	Vertical
2	8381.9227	44.29	6.15	50.44	74.00	-23.56	Vertical
3	14910.4263	40.66	12.72	53.38	74.00	-20.62	Vertical
4	16520.6276	38.42	16.63	55.05	74.00	-18.95	Vertical
5	16849.8562	37.38	16.80	54.18	74.00	-19.82	Vertical
6	17698.0873	37.29	19.24	56.53	74.00	-17.47	Vertical
7	17976.9971	34.75	20.62	55.37	74.00	-18.63	Vertical

#### AV Result:

No.	Frequency [MHz]	Reading Level [dBuV]	Correct Factor [dB/m]	Result [dBuV/m]	Limit [dBuV/m]	Margin [dB]	Remark
1	16520.6276	28.72	16.63	45.35	54.00	-8.65	Vertical
2	16849.8562	26.35	16.80	43.15	54.00	-10.85	Vertical
3	17698.0873	27.28	19.24	46.52	54.00	-7.48	Vertical
4	17976.9971	25.14	20.62	45.76	54.00	-8.24	Vertical

Remark: 1. Measurement = Reading Level + Correct Factor.

2. If Peak Result complies with AV limit, AV Result is deemed to comply with AV limit.

3. Test setup: RBW: 1 MHz, VBW: 3 MHz, Sweep time: auto.

4. Peak: Peak detector.

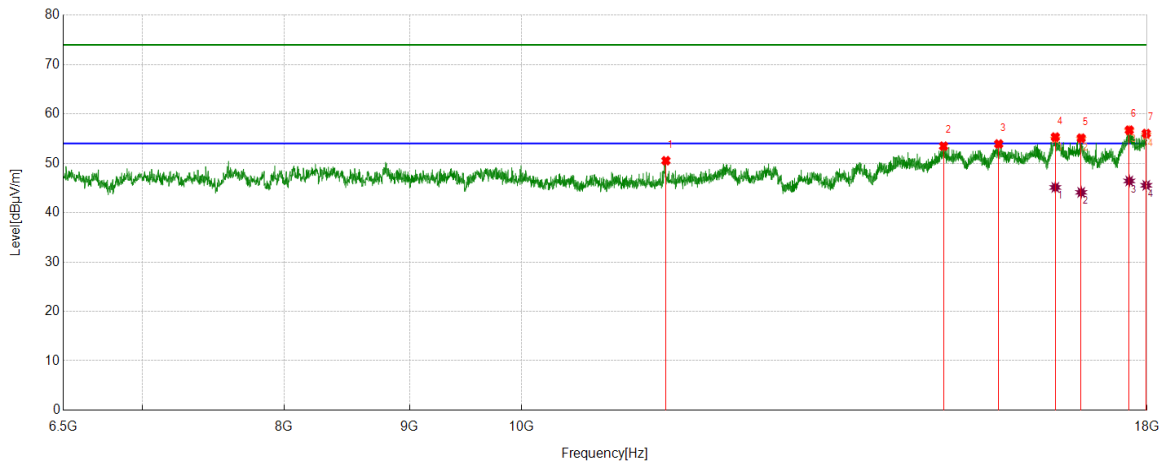
5. AVG: VBW refer to section 6.2.

6. For above 6.5GHz part, filter losses were only considered in the spurious frequency bands and the authorized band were not corrected for HPF losses. The proper operation of the transmitter prior to adding the filter to the measurement chain.

7. Only the worst case emission was recorded, if it complies with the limit, the other emissions deemed to comply with the limit.

8. Since non-restricted band peak emissions are less than the average limit, they also comply with the -27 dBm/MHz (68.2 dBuV/m) limit.

Test Mode	Channel	Polarization	Verdict
11ac VHT20	5720	Horizontal	PASS



#### PK Result:

No.	Frequency [MHz]	Reading Level [dBuV]	Correct Factor [dB/m]	Result [dBuV/m]	Limit [dBuV/m]	Margin [dB]	Remark
1	11452.8066	43.09	7.43	50.52	74.00	-23.48	Horizontal
2	14867.2959	40.73	12.74	53.47	74.00	-20.53	Horizontal
3	15658.0198	40.05	13.86	53.91	74.00	-20.09	Horizontal
4	16513.4392	38.60	16.71	55.31	74.00	-18.69	Horizontal
5	16920.3025	38.29	16.80	55.09	74.00	-18.91	Horizontal
6	17702.4003	37.42	19.29	56.71	74.00	-17.29	Horizontal
7	17987.0609	35.39	20.64	56.03	74.00	-17.97	Horizontal

#### AV Result:

No.	Frequency [MHz]	Reading Level [dBuV]	Correct Factor [dB/m]	Result [dBuV/m]	Limit [dBuV/m]	Margin [dB]	Remark
1	16513.4392	28.40	16.71	45.11	54.00	-8.89	Horizontal
2	16920.3025	27.31	16.80	44.11	54.00	-9.89	Horizontal
3	17702.4003	27.13	19.29	46.42	54.00	-7.58	Horizontal
4	17987.0609	24.89	20.64	45.53	54.00	-8.47	Horizontal

Remark: 1. Measurement = Reading Level + Correct Factor.

2. If Peak Result complies with AV limit, AV Result is deemed to comply with AV limit.

3. Test setup: RBW: 1 MHz, VBW: 3 MHz, Sweep time: auto.

4. Peak: Peak detector.

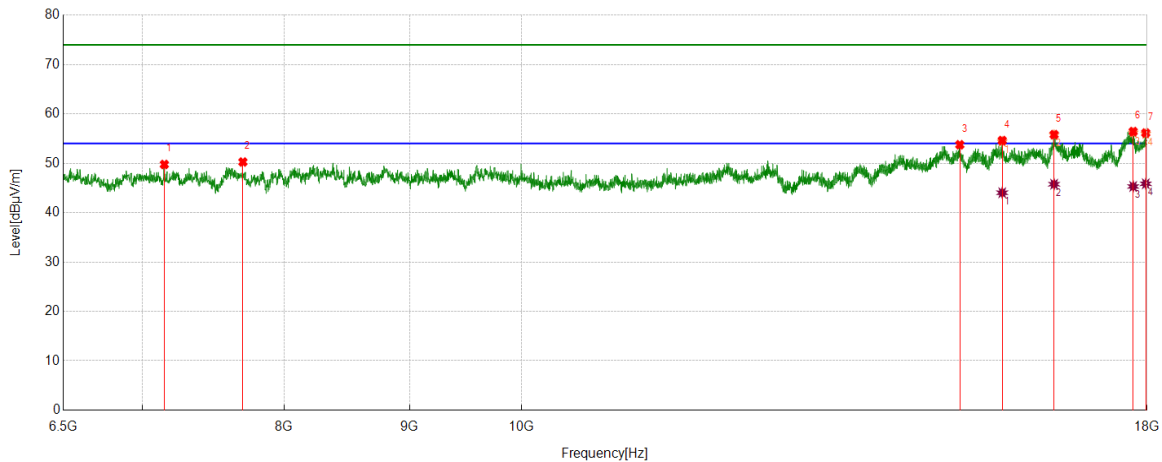
5. AVG: VBW refer to section 6.2.

6. For above 6.5GHz part, filter losses were only considered in the spurious frequency bands and the authorized band were not corrected for HPF losses. The proper operation of the transmitter prior to adding the filter to the measurement chain.

7. Only the worst case emission was recorded, if it complies with the limit, the other emissions deemed to comply with the limit.

8. Since non-restricted band peak emissions are less than the average limit, they also comply with the -27 dBm/MHz (68.2 dBuV/m) limit.

Test Mode	Channel	Polarization	Verdict
11ac VHT20	5720	Vertical	PASS



#### PK Result:

No.	Frequency [MHz]	Reading Level [dBuV]	Correct Factor [dB/m]	Result [dBuV/m]	Limit [dBuV/m]	Margin [dB]	Remark
1	7148.3935	45.48	4.28	49.76	74.00	-24.24	Vertical
2	7696.1495	44.73	5.53	50.26	74.00	-23.74	Vertical
3	15095.8870	40.57	13.18	53.75	74.00	-20.25	Vertical
4	15709.7762	40.32	14.29	54.61	74.00	-19.39	Vertical
5	16494.7493	39.20	16.61	55.81	74.00	-18.19	Vertical
6	17767.0959	36.89	19.54	56.43	74.00	-17.57	Vertical
7	17978.4348	35.48	20.65	56.13	74.00	-17.87	Vertical

#### AV Result:

No.	Frequency [MHz]	Reading Level [dBuV]	Correct Factor [dB/m]	Result [dBuV/m]	Limit [dBuV/m]	Margin [dB]	Remark
1	15709.7762	29.74	14.29	44.03	54.00	-9.97	Vertical
2	16494.7493	29.15	16.61	45.76	54.00	-8.24	Vertical
3	17767.0959	25.76	19.54	45.30	54.00	-8.70	Vertical
4	17978.4348	25.20	20.65	45.85	54.00	-8.15	Vertical

Remark: 1. Measurement = Reading Level + Correct Factor.

2. If Peak Result complies with AV limit, AV Result is deemed to comply with AV limit.

3. Test setup: RBW: 1 MHz, VBW: 3 MHz, Sweep time: auto.

4. Peak: Peak detector.

5. AVG: VBW refer to section 6.2.

6. For above 6.5GHz part, filter losses were only considered in the spurious frequency bands and the authorized band were not corrected for HPF losses. The proper operation of the transmitter prior to adding the filter to the measurement chain.

7. Only the worst case emission was recorded, if it complies with the limit, the other emissions deemed to comply with the limit.

8. Since non-restricted band peak emissions are less than the average limit, they also comply with the -27 dBm/MHz (68.2 dBuV/m) limit.