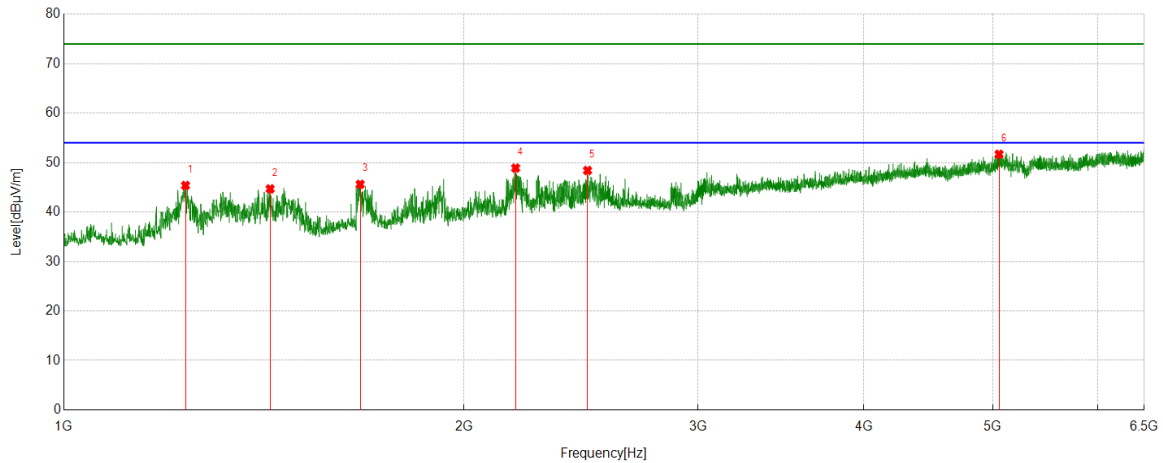


Test Mode	Channel	Polarization	Verdict
11ac VHT40	5310	Horizontal	PASS

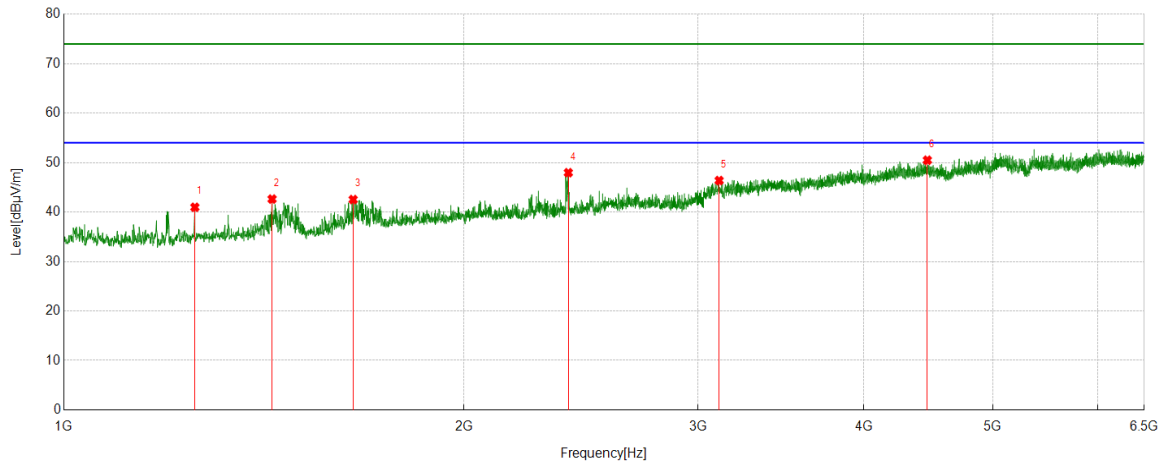


PK Result:

No.	Frequency [MHz]	Reading Level [dBuV]	Correct Factor [dB/m]	Result [dBuV/m]	Limit [dBuV/m]	Margin [dB]	Remark
1	1234.6927	46.84	-1.46	45.38	74.00	-28.62	Horizontal
2	1429.6589	45.30	-0.61	44.69	74.00	-29.31	Horizontal
3	1671.0746	44.04	1.57	45.61	74.00	-28.39	Horizontal
4	2187.5208	44.64	4.26	48.90	74.00	-25.10	Horizontal
5	2477.8309	43.17	5.24	48.41	74.00	-25.59	Horizontal
6	5054.5616	35.52	16.17	51.69	74.00	-22.31	Horizontal

- Remark: 1. Measurement = Reading Level + Correct Factor.
2. If Peak Result complies with AV limit, AV Result is deemed to comply with AV limit.
3. Test setup: RBW: 1 MHz, VBW: 3 MHz, Sweep time: auto.
4. Peak: Peak detector.
5. AVG: VBW refer to section 6.2.
6. For below 6.5GHz part, filter losses were only considered in the spurious frequency bands and the authorized band were not corrected for Band Reject Filter losses.
The proper operation of the transmitter prior to adding the filter to the measurement chain.
7. Only the worst case emission was recorded, if it complies with the limit, the other emissions deemed to comply with the limit.

Test Mode	Channel	Polarization	Verdict
11ac VHT40	5310	Vertical	PASS

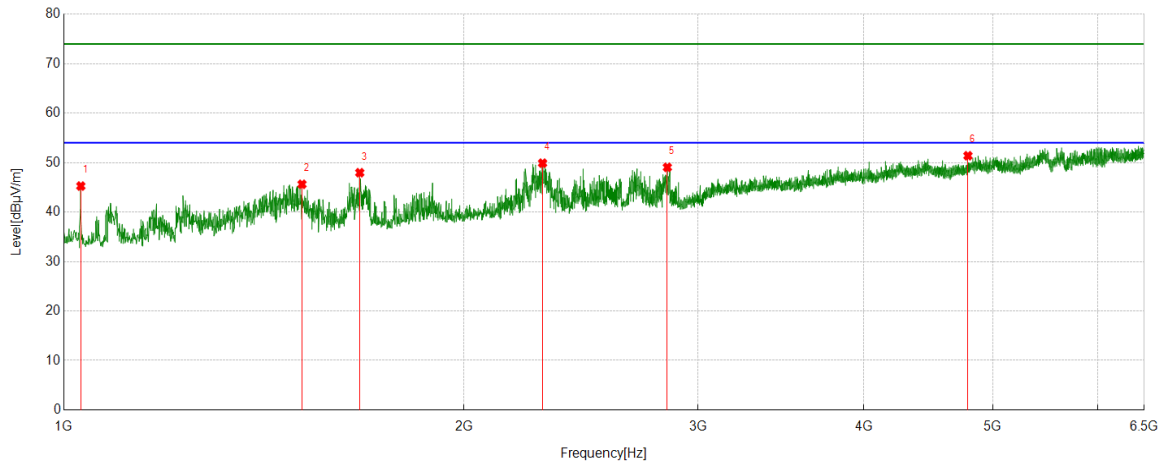


PK Result:

No.	Frequency [MHz]	Reading Level [dBuV]	Correct Factor [dB/m]	Result [dBuV/m]	Limit [dBuV/m]	Margin [dB]	Remark
1	1254.8617	42.12	-1.15	40.97	74.00	-33.03	Vertical
2	1434.5483	43.27	-0.64	42.63	74.00	-31.37	Vertical
3	1650.9057	41.04	1.49	42.53	74.00	-31.47	Vertical
4	2396.5441	43.47	4.49	47.96	74.00	-26.04	Vertical
5	3112.2347	35.87	10.51	46.38	74.00	-27.62	Vertical
6	4464.1627	36.12	14.37	50.49	74.00	-23.51	Vertical

- Remark: 1. Measurement = Reading Level + Correct Factor.
2. If Peak Result complies with AV limit, AV Result is deemed to comply with AV limit.
3. Test setup: RBW: 1 MHz, VBW: 3 MHz, Sweep time: auto.
4. Peak: Peak detector.
5. AVG: VBW refer to section 6.2.
6. For below 6.5GHz part, filter losses were only considered in the spurious frequency bands and the authorized band were not corrected for Band Reject Filter losses.
The proper operation of the transmitter prior to adding the filter to the measurement chain.
7. Only the worst case emission was recorded, if it complies with the limit, the other emissions deemed to comply with the limit.

Test Mode	Channel	Polarization	Verdict
11ac VHT40	5510	Horizontal	PASS

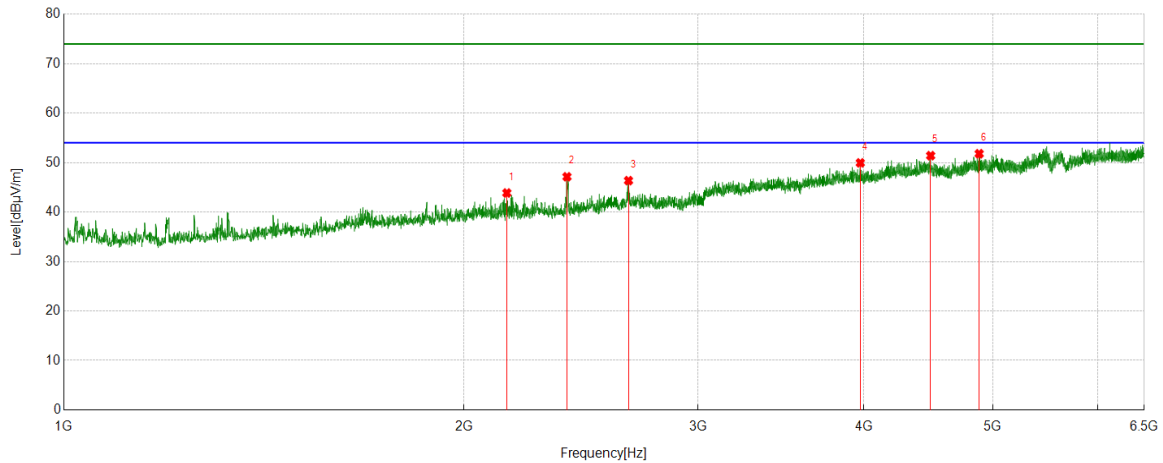


PK Result:

No.	Frequency	Reading Level	Correct Factor	Result	Limit	Margin	Remark
	[MHz]	[dBuV]	[dB/m]	[dBuV/m]	[dBuV/m]	[dB]	
1	1029.9478	46.94	-1.68	45.26	74.00	-28.74	Horizontal
2	1510.9457	46.12	-0.50	45.62	74.00	-28.38	Horizontal
3	1669.8522	46.42	1.54	47.96	74.00	-26.04	Horizontal
4	2292.0324	44.62	5.27	49.89	74.00	-24.11	Horizontal
5	2845.1495	42.40	6.65	49.05	74.00	-24.95	Horizontal
6	4789.3099	36.38	15.01	51.39	74.00	-22.61	Horizontal

- Remark: 1. Measurement = Reading Level + Correct Factor.
2. If Peak Result complies with AV limit, AV Result is deemed to comply with AV limit.
3. Test setup: RBW: 1 MHz, VBW: 3 MHz, Sweep time: auto.
4. Peak: Peak detector.
5. AVG: VBW refer to section 6.2.
6. For below 6.5GHz part, filter losses were only considered in the spurious frequency bands and the authorized band were not corrected for Band Reject Filter losses.
The proper operation of the transmitter prior to adding the filter to the measurement chain.
7. Only the worst case emission was recorded, if it complies with the limit, the other emissions deemed to comply with the limit.

Test Mode	Channel	Polarization	Verdict
11ac VHT40	5510	Vertical	PASS

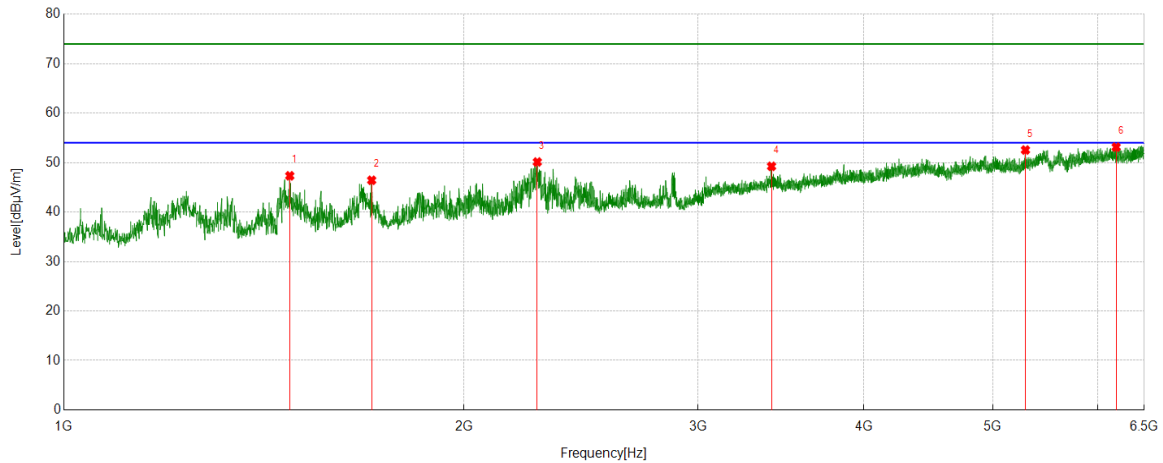


PK Result:

No.	Frequency [MHz]	Reading Level [dBuV]	Correct Factor [dB/m]	Result [dBuV/m]	Limit [dBuV/m]	Margin [dB]	Remark
1	2154.5172	39.98	3.88	43.86	74.00	-30.14	Vertical
2	2391.0434	42.78	4.36	47.14	74.00	-26.86	Vertical
3	2659.9622	39.01	7.35	46.36	74.00	-27.64	Vertical
4	3974.6083	37.09	12.86	49.95	74.00	-24.05	Vertical
5	4489.8322	37.02	14.39	51.41	74.00	-22.59	Vertical
6	4883.4315	36.51	15.29	51.80	74.00	-22.20	Vertical

- Remark: 1. Measurement = Reading Level + Correct Factor.
2. If Peak Result complies with AV limit, AV Result is deemed to comply with AV limit.
3. Test setup: RBW: 1 MHz, VBW: 3 MHz, Sweep time: auto.
4. Peak: Peak detector.
5. AVG: VBW refer to section 6.2.
6. For below 6.5GHz part, filter losses were only considered in the spurious frequency bands and the authorized band were not corrected for Band Reject Filter losses.
The proper operation of the transmitter prior to adding the filter to the measurement chain.
7. Only the worst case emission was recorded, if it complies with the limit, the other emissions deemed to comply with the limit.

Test Mode	Channel	Polarization	Verdict
11ac VHT40	5550	Horizontal	PASS

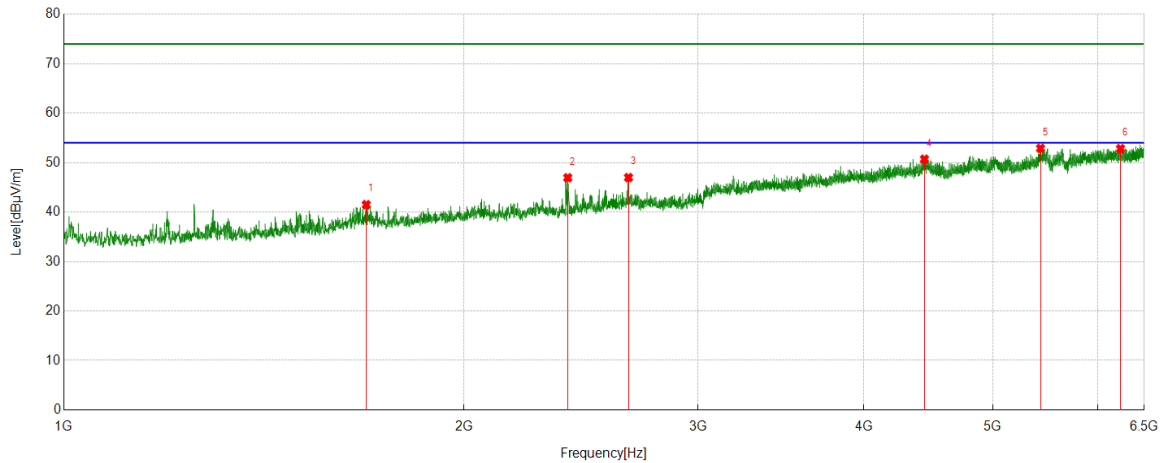


PK Result:

No.	Frequency [MHz]	Reading Level [dBuV]	Correct Factor [dB/m]	Result [dBuV/m]	Limit [dBuV/m]	Margin [dB]	Remark
1	1479.1644	47.63	-0.30	47.33	74.00	-26.67	Horizontal
2	1704.6894	45.03	1.40	46.43	74.00	-27.57	Horizontal
3	2271.2524	44.80	5.33	50.13	74.00	-23.87	Horizontal
4	3408.0453	38.95	10.30	49.25	74.00	-24.75	Horizontal
5	5291.0879	36.69	15.86	52.55	74.00	-21.45	Horizontal
6	6191.3546	34.66	18.47	53.13	74.00	-20.87	Horizontal

- Remark: 1. Measurement = Reading Level + Correct Factor.
2. If Peak Result complies with AV limit, AV Result is deemed to comply with AV limit.
3. Test setup: RBW: 1 MHz, VBW: 3 MHz, Sweep time: auto.
4. Peak: Peak detector.
5. AVG: VBW refer to section 6.2.
6. For below 6.5GHz part, filter losses were only considered in the spurious frequency bands and the authorized band were not corrected for Band Reject Filter losses.
The proper operation of the transmitter prior to adding the filter to the measurement chain.
7. Only the worst case emission was recorded, if it complies with the limit, the other emissions deemed to comply with the limit.

Test Mode	Channel	Polarization	Verdict
11ac VHT40	5550	Vertical	PASS

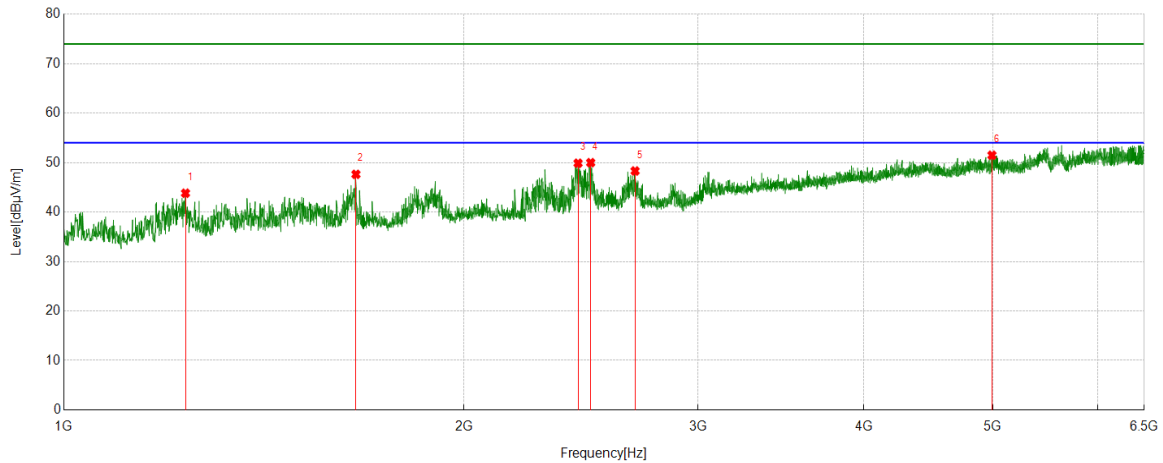


PK Result:

No.	Frequency [MHz]	Reading Level [dBuV]	Correct Factor [dB/m]	Result [dBuV/m]	Limit [dBuV/m]	Margin [dB]	Remark
1	1688.7988	40.04	1.45	41.49	74.00	-32.51	Vertical
2	2394.0993	42.60	4.34	46.94	74.00	-27.06	Vertical
3	2659.9622	39.63	7.35	46.98	74.00	-27.02	Vertical
4	4441.5491	36.09	14.60	50.69	74.00	-23.31	Vertical
5	5431.0479	34.98	17.91	52.89	74.00	-21.11	Vertical
6	6238.4154	34.35	18.47	52.82	74.00	-21.18	Vertical

- Remark: 1. Measurement = Reading Level + Correct Factor.
2. If Peak Result complies with AV limit, AV Result is deemed to comply with AV limit.
3. Test setup: RBW: 1 MHz, VBW: 3 MHz, Sweep time: auto.
4. Peak: Peak detector.
5. AVG: VBW refer to section 6.2.
6. For below 6.5GHz part, filter losses were only considered in the spurious frequency bands and the authorized band were not corrected for Band Reject Filter losses.
The proper operation of the transmitter prior to adding the filter to the measurement chain.
7. Only the worst case emission was recorded, if it complies with the limit, the other emissions deemed to comply with the limit.

Test Mode	Channel	Polarization	Verdict
11ac VHT40	5670	Horizontal	PASS

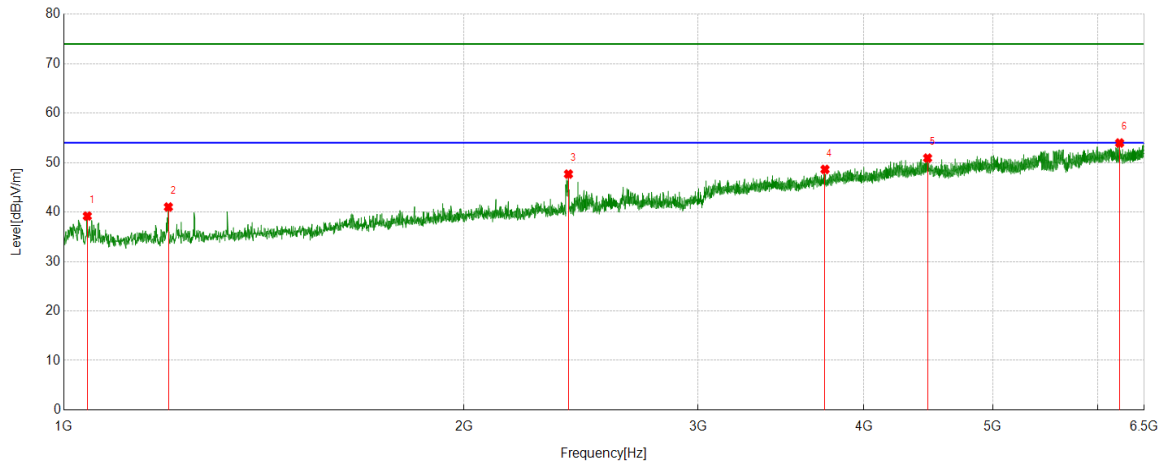


PK Result:

No.	Frequency [MHz]	Reading Level [dBuV]	Correct Factor [dB/m]	Result [dBuV/m]	Limit [dBuV/m]	Margin [dB]	Remark
1	1234.6927	45.46	-1.64	43.82	74.00	-30.18	Horizontal
2	1658.8510	46.32	1.31	47.63	74.00	-26.37	Horizontal
3	2437.4931	44.81	5.07	49.88	74.00	-24.12	Horizontal
4	2491.2768	44.33	5.66	49.99	74.00	-24.01	Horizontal
5	2690.5212	41.82	6.49	48.31	74.00	-25.69	Horizontal
6	4992.8325	36.17	15.32	51.49	74.00	-22.51	Horizontal

- Remark: 1. Measurement = Reading Level + Correct Factor.
2. If Peak Result complies with AV limit, AV Result is deemed to comply with AV limit.
3. Test setup: RBW: 1 MHz, VBW: 3 MHz, Sweep time: auto.
4. Peak: Peak detector.
5. AVG: VBW refer to section 6.2.
6. For below 6.5GHz part, filter losses were only considered in the spurious frequency bands and the authorized band were not corrected for Band Reject Filter losses.
The proper operation of the transmitter prior to adding the filter to the measurement chain.
7. Only the worst case emission was recorded, if it complies with the limit, the other emissions deemed to comply with the limit.

Test Mode	Channel	Polarization	Verdict
11ac VHT40	5670	Vertical	PASS

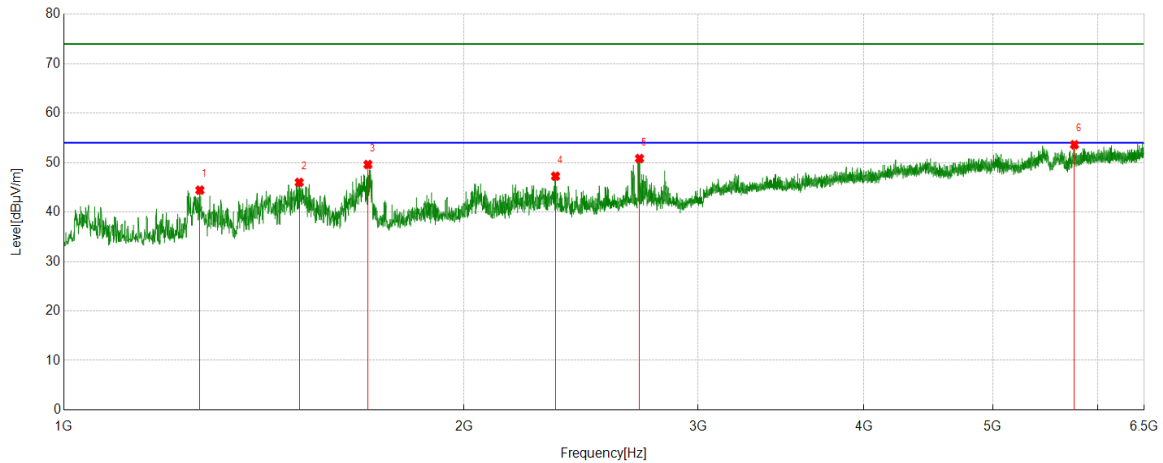


PK Result:

No.	Frequency [MHz]	Reading Level [dBuV]	Correct Factor [dB/m]	Result [dBuV/m]	Limit [dBuV/m]	Margin [dB]	Remark
1	1041.5602	40.76	-1.57	39.19	74.00	-34.81	Vertical
2	1198.6332	42.94	-1.92	41.02	74.00	-32.98	Vertical
3	2397.1552	43.36	4.32	47.68	74.00	-26.32	Vertical
4	3738.6932	36.73	11.89	48.62	74.00	-25.38	Vertical
5	4465.9962	35.96	14.95	50.91	74.00	-23.09	Vertical
6	6228.6365	35.52	18.45	53.97	74.00	-20.03	Vertical

- Remark: 1. Measurement = Reading Level + Correct Factor.
2. If Peak Result complies with AV limit, AV Result is deemed to comply with AV limit.
3. Test setup: RBW: 1 MHz, VBW: 3 MHz, Sweep time: auto.
4. Peak: Peak detector.
5. AVG: VBW refer to section 6.2.
6. For below 6.5GHz part, filter losses were only considered in the spurious frequency bands and the authorized band were not corrected for Band Reject Filter losses.
The proper operation of the transmitter prior to adding the filter to the measurement chain.
7. Only the worst case emission was recorded, if it complies with the limit, the other emissions deemed to comply with the limit.

Test Mode	Channel	Polarization	Verdict
11ac VHT40	5710	Horizontal	PASS

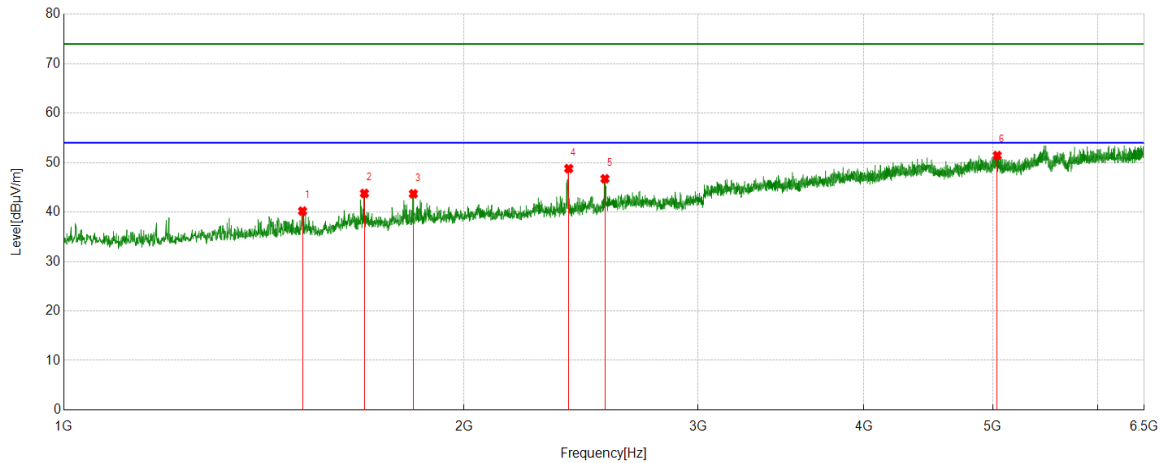


PK Result:

No.	Frequency [MHz]	Reading Level [dBuV]	Correct Factor [dB/m]	Result [dBuV/m]	Limit [dBuV/m]	Margin [dB]	Remark
1	1265.8629	45.81	-1.38	44.43	74.00	-29.57	Horizontal
2	1503.6115	46.44	-0.44	46.00	74.00	-28.00	Horizontal
3	1693.6882	48.09	1.52	49.61	74.00	-24.39	Horizontal
4	2343.9827	42.80	4.45	47.25	74.00	-26.75	Horizontal
5	2711.3013	44.45	6.38	50.83	74.00	-23.17	Horizontal
6	5759.8622	36.51	17.11	53.62	74.00	-20.38	Horizontal

- Remark: 1. Measurement = Reading Level + Correct Factor.
2. If Peak Result complies with AV limit, AV Result is deemed to comply with AV limit.
3. Test setup: RBW: 1 MHz, VBW: 3 MHz, Sweep time: auto.
4. Peak: Peak detector.
5. AVG: VBW refer to section 6.2.
6. For below 6.5GHz part, filter losses were only considered in the spurious frequency bands and the authorized band were not corrected for Band Reject Filter losses.
The proper operation of the transmitter prior to adding the filter to the measurement chain.
7. Only the worst case emission was recorded, if it complies with the limit, the other emissions deemed to comply with the limit.

Test Mode	Channel	Polarization	Verdict
11ac VHT40	5710	Vertical	PASS

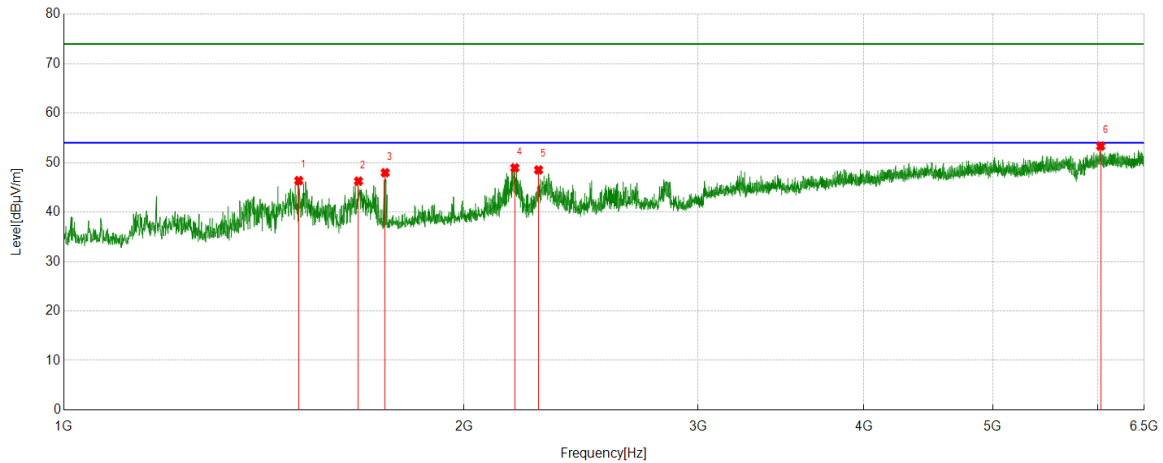


PK Result:

No.	Frequency [MHz]	Reading Level [dBuV]	Correct Factor [dB/m]	Result [dBuV/m]	Limit [dBuV/m]	Margin [dB]	Remark
1	1512.1680	40.72	-0.52	40.20	74.00	-33.80	Vertical
2	1683.2981	42.34	1.43	43.77	74.00	-30.23	Vertical
3	1832.4258	41.66	2.03	43.69	74.00	-30.31	Vertical
4	2398.3776	44.49	4.30	48.79	74.00	-25.21	Vertical
5	2553.6171	41.32	5.41	46.73	74.00	-27.27	Vertical
6	5038.6710	35.31	16.14	51.45	74.00	-22.55	Vertical

- Remark: 1. Measurement = Reading Level + Correct Factor.
2. If Peak Result complies with AV limit, AV Result is deemed to comply with AV limit.
3. Test setup: RBW: 1 MHz, VBW: 3 MHz, Sweep time: auto.
4. Peak: Peak detector.
5. AVG: VBW refer to section 6.2.
6. For below 6.5GHz part, filter losses were only considered in the spurious frequency bands and the authorized band were not corrected for Band Reject Filter losses.
The proper operation of the transmitter prior to adding the filter to the measurement chain.
7. Only the worst case emission was recorded, if it complies with the limit, the other emissions deemed to comply with the limit.

Test Mode	Channel	Polarization	Verdict
11ac VHT40	5755	Horizontal	PASS

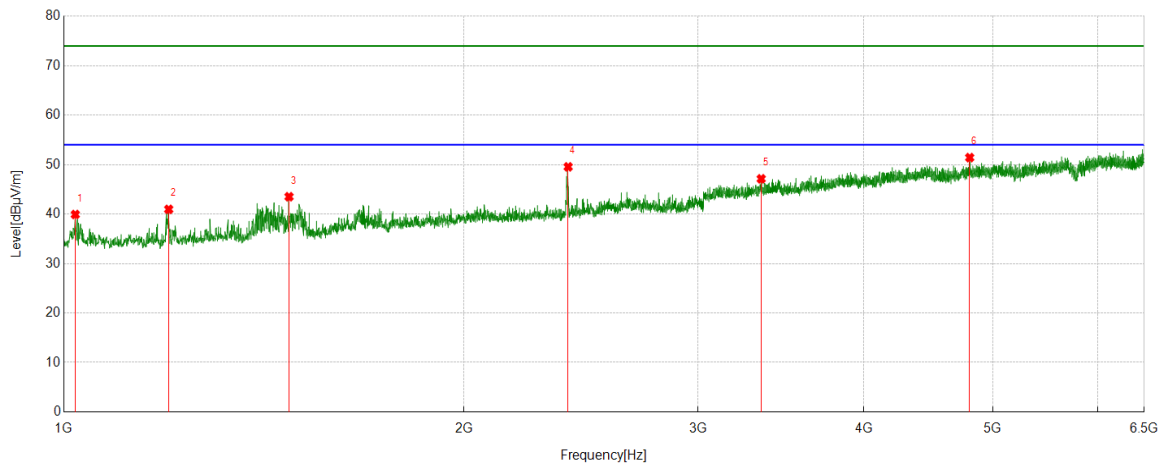


PK Result:

No.	Frequency [MHz]	Reading Level [dBuV]	Correct Factor [dB/m]	Result [dBuV/m]	Limit [dBuV/m]	Margin [dB]	Remark
1	1502.3892	46.98	-0.62	46.36	74.00	-27.64	Horizontal
2	1666.1851	44.60	1.65	46.25	74.00	-27.75	Horizontal
3	1745.0272	46.79	1.17	47.96	74.00	-26.04	Horizontal
4	2184.4649	45.18	3.75	48.93	74.00	-25.07	Horizontal
5	2276.1418	44.31	4.21	48.52	74.00	-25.48	Horizontal
6	6027.5586	35.70	17.64	53.34	74.00	-20.66	Horizontal

- Remark: 1. Measurement = Reading Level + Correct Factor.
2. If Peak Result complies with AV limit, AV Result is deemed to comply with AV limit.
3. Test setup: RBW: 1 MHz, VBW: 3 MHz, Sweep time: auto.
4. Peak: Peak detector.
5. AVG: VBW refer to section 6.2.
6. For below 6.5GHz part, filter losses were only considered in the spurious frequency bands and the authorized band were not corrected for Band Reject Filter losses.
The proper operation of the transmitter prior to adding the filter to the measurement chain.
7. Only the worst case emission was recorded, if it complies with the limit, the other emissions deemed to comply with the limit.

Test Mode	Channel	Polarization	Verdict
11ac VHT40	5755	Vertical	PASS



PK Result:

No.	Frequency	Reading Level	Correct Factor	Result	Limit	Margin	Remark
	[MHz]	[dBuV]	[dB/m]	[dBuV/m]	[dBuV/m]	[dB]	
1	1020.1689	41.71	-1.79	39.92	74.00	-34.08	Vertical
2	1199.2444	42.92	-1.96	40.96	74.00	-33.04	Vertical
3	1477.3308	44.19	-0.68	43.51	74.00	-30.49	Vertical
4	2395.9329	45.14	4.41	49.55	74.00	-24.45	Vertical
5	3347.5386	36.59	10.54	47.13	74.00	-26.87	Vertical
6	4803.9782	36.35	15.07	51.42	74.00	-22.58	Vertical

Remark: 1. Measurement = Reading Level + Correct Factor.

2. If Peak Result complies with AV limit, AV Result is deemed to comply with AV limit.

3. Test setup: RBW: 1 MHz, VBW: 3 MHz, Sweep time: auto.

4. Peak: Peak detector.

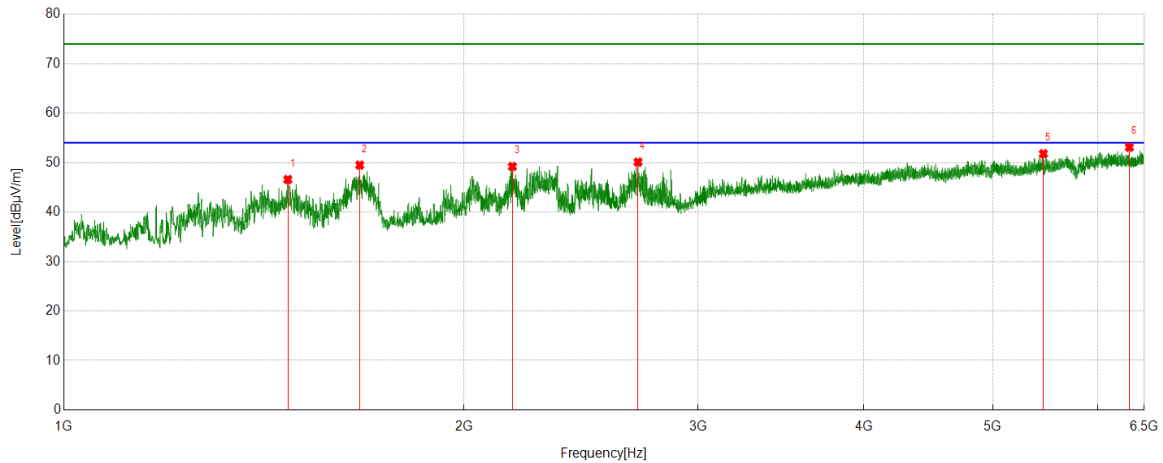
5. AVG: VBW refer to section 6.2.

6. For below 6.5GHz part, filter losses were only considered in the spurious frequency bands and the authorized band were not corrected for Band Reject Filter losses.

The proper operation of the transmitter prior to adding the filter to the measurement chain.

7. Only the worst case emission was recorded, if it complies with the limit, the other emissions deemed to comply with the limit.

Test Mode	Channel	Polarization	Verdict
11ac VHT40	5795	Horizontal	PASS

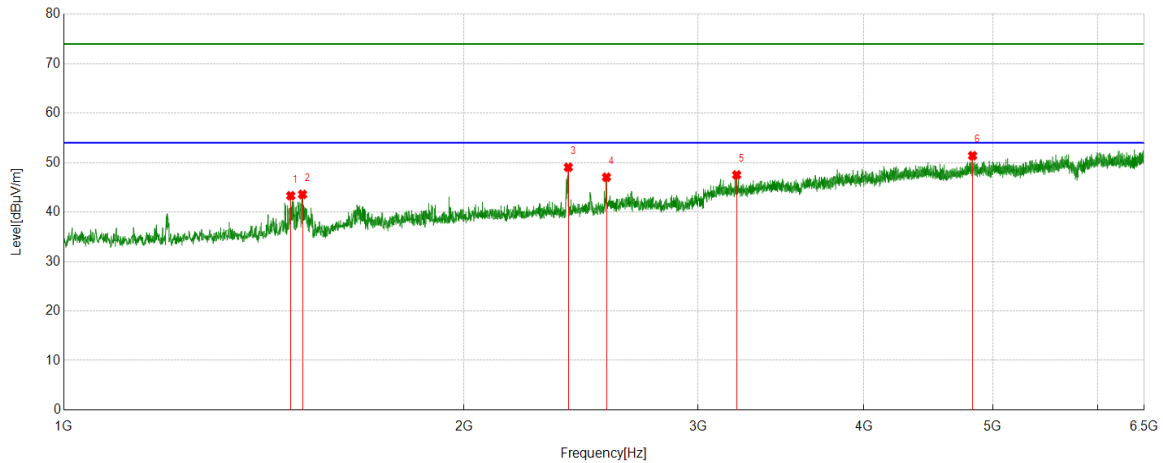


PK Result:

No.	Frequency [MHz]	Reading Level [dBuV]	Correct Factor [dB/m]	Result [dBuV/m]	Limit [dBuV/m]	Margin [dB]	Remark
1	1474.2749	47.25	-0.67	46.58	74.00	-27.42	Horizontal
2	1669.8522	47.74	1.76	49.50	74.00	-24.50	Horizontal
3	2175.2973	45.56	3.65	49.21	74.00	-24.79	Horizontal
4	2703.9671	43.71	6.39	50.10	74.00	-23.90	Horizontal
5	5457.9398	35.49	16.30	51.79	74.00	-22.21	Horizontal
6	6334.9817	34.66	18.45	53.11	74.00	-20.89	Horizontal

- Remark: 1. Measurement = Reading Level + Correct Factor.
2. If Peak Result complies with AV limit, AV Result is deemed to comply with AV limit.
3. Test setup: RBW: 1 MHz, VBW: 3 MHz, Sweep time: auto.
4. Peak: Peak detector.
5. AVG: VBW refer to section 6.2.
6. For below 6.5GHz part, filter losses were only considered in the spurious frequency bands and the authorized band were not corrected for Band Reject Filter losses.
The proper operation of the transmitter prior to adding the filter to the measurement chain.
7. Only the worst case emission was recorded, if it complies with the limit, the other emissions deemed to comply with the limit.

Test Mode	Channel	Polarization	Verdict
11ac VHT40	5795	Vertical	PASS

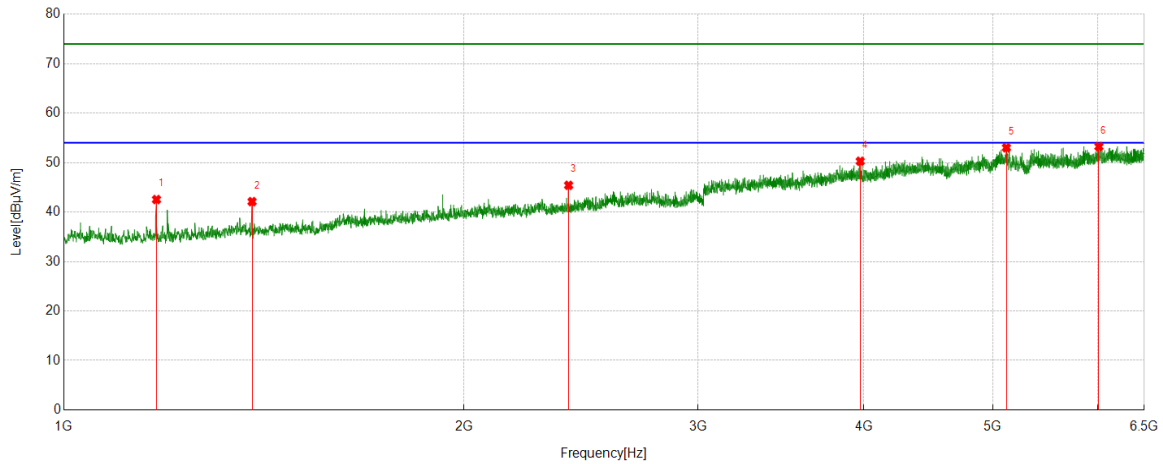


PK Result:

No.	Frequency [MHz]	Reading Level [dBuV]	Correct Factor [dB/m]	Result [dBuV/m]	Limit [dBuV/m]	Margin [dB]	Remark
1	1481.6091	43.99	-0.69	43.30	74.00	-30.70	Vertical
2	1512.1680	44.06	-0.49	43.57	74.00	-30.43	Vertical
3	2396.5441	44.62	4.44	49.06	74.00	-24.94	Vertical
4	2560.3400	41.60	5.45	47.05	74.00	-26.95	Vertical
5	3208.1898	38.47	9.04	47.51	74.00	-26.49	Vertical
6	4827.8142	36.57	14.83	51.40	74.00	-22.60	Vertical

- Remark: 1. Measurement = Reading Level + Correct Factor.
2. If Peak Result complies with AV limit, AV Result is deemed to comply with AV limit.
3. Test setup: RBW: 1 MHz, VBW: 3 MHz, Sweep time: auto.
4. Peak: Peak detector.
5. AVG: VBW refer to section 6.2.
6. For below 6.5GHz part, filter losses were only considered in the spurious frequency bands and the authorized band were not corrected for Band Reject Filter losses.
The proper operation of the transmitter prior to adding the filter to the measurement chain.
7. Only the worst case emission was recorded, if it complies with the limit, the other emissions deemed to comply with the limit.

Test Mode	Channel	Polarization	Verdict
11ax HE20	5180	Horizontal	PASS

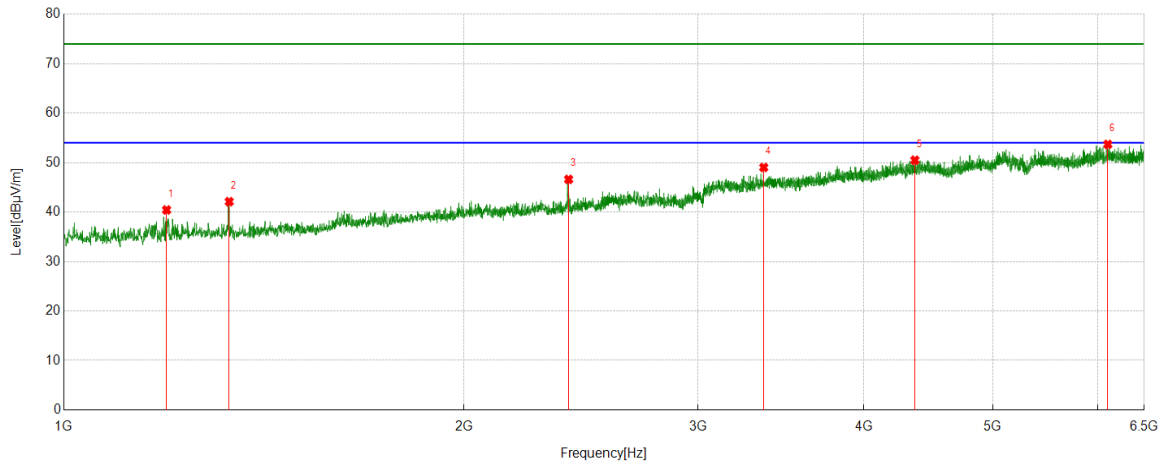


PK Result:

No.	Frequency	Reading Level	Correct Factor	Result	Limit	Margin	Remark
	[MHz]	[dBuV]	[dB/m]	[dBuV/m]	[dBuV/m]	[dB]	
1	1174.1860	44.51	-1.98	42.53	74.00	-31.47	Horizontal
2	1385.6540	43.09	-0.98	42.11	74.00	-31.89	Horizontal
3	2397.7664	40.96	4.45	45.41	74.00	-28.59	Horizontal
4	3973.9971	37.41	12.87	50.28	74.00	-23.72	Horizontal
5	5119.3466	36.48	16.53	53.01	74.00	-20.99	Horizontal
6	6009.2232	35.56	17.69	53.25	74.00	-20.75	Horizontal

- Remark: 1. Measurement = Reading Level + Correct Factor.
2. If Peak Result complies with AV limit, AV Result is deemed to comply with AV limit.
3. Test setup: RBW: 1 MHz, VBW: 3 MHz, Sweep time: auto.
4. Peak: Peak detector.
5. AVG: VBW refer to section 6.2.
6. For below 6.5GHz part, filter losses were only considered in the spurious frequency bands and the authorized band were not corrected for Band Reject Filter losses.
The proper operation of the transmitter prior to adding the filter to the measurement chain.
7. Only the worst case emission was recorded, if it complies with the limit, the other emissions deemed to comply with the limit.

Test Mode	Channel	Polarization	Verdict
11ax HE20	5180	Vertical	PASS

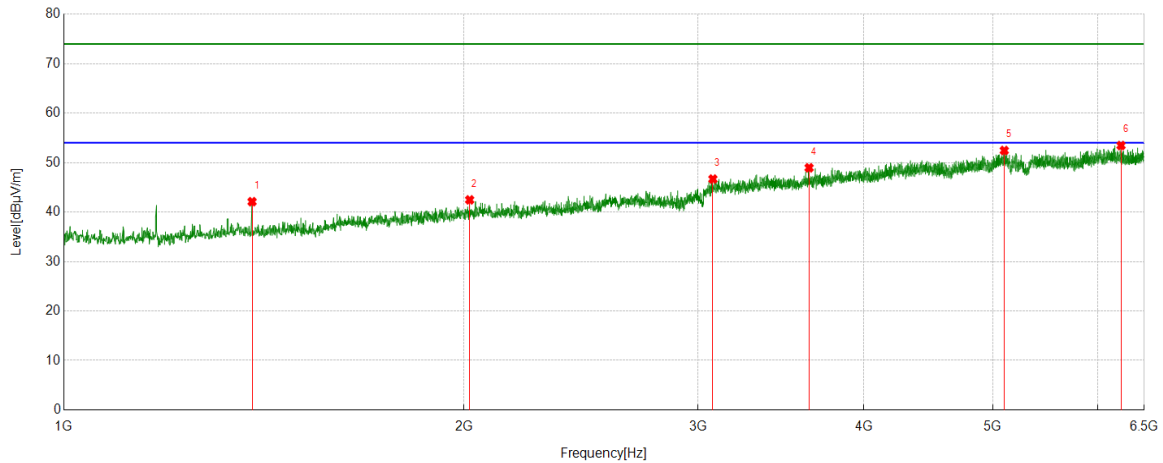


PK Result:

No.	Frequency [MHz]	Reading Level [dBuV]	Correct Factor [dB/m]	Result [dBuV/m]	Limit [dBuV/m]	Margin [dB]	Remark
1	1194.9661	42.55	-2.12	40.43	74.00	-33.57	Vertical
2	1331.8702	43.69	-1.58	42.11	74.00	-31.89	Vertical
3	2397.7664	42.16	4.45	46.61	74.00	-27.39	Vertical
4	3362.2069	38.53	10.49	49.02	74.00	-24.98	Vertical
5	4368.8188	36.53	13.96	50.49	74.00	-23.51	Vertical
6	6102.7336	35.49	18.20	53.69	74.00	-20.31	Vertical

- Remark: 1. Measurement = Reading Level + Correct Factor.
2. If Peak Result complies with AV limit, AV Result is deemed to comply with AV limit.
3. Test setup: RBW: 1 MHz, VBW: 3 MHz, Sweep time: auto.
4. Peak: Peak detector.
5. AVG: VBW refer to section 6.2.
6. For below 6.5GHz part, filter losses were only considered in the spurious frequency bands and the authorized band were not corrected for Band Reject Filter losses.
The proper operation of the transmitter prior to adding the filter to the measurement chain.
7. Only the worst case emission was recorded, if it complies with the limit, the other emissions deemed to comply with the limit.

Test Mode	Channel	Polarization	Verdict
11ax HE20	5200	Horizontal	PASS

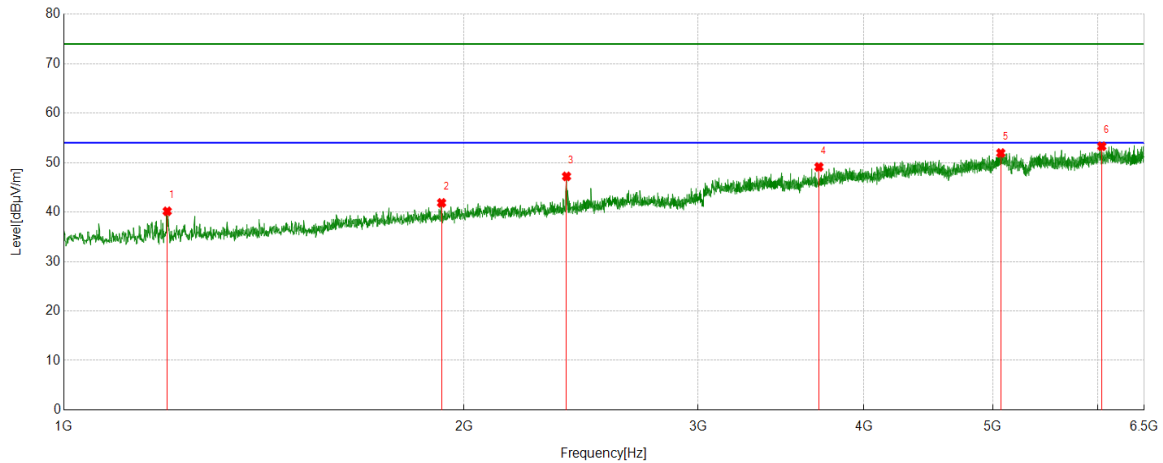


PK Result:

No.	Frequency	Reading Level	Correct Factor	Result	Limit	Margin	Remark
	[MHz]	[dBuV]	[dB/m]	[dBuV/m]	[dBuV/m]	[dB]	
1	1385.6540	43.08	-0.98	42.10	74.00	-31.90	Horizontal
2	2020.0578	38.78	3.69	42.47	74.00	-31.53	Horizontal
3	3078.6198	36.65	10.03	46.68	74.00	-27.32	Horizontal
4	3637.2375	37.88	11.07	48.95	74.00	-25.05	Horizontal
5	5100.4000	35.81	16.64	52.45	74.00	-21.55	Horizontal
6	6243.9160	34.78	18.68	53.46	74.00	-20.54	Horizontal

- Remark: 1. Measurement = Reading Level + Correct Factor.
2. If Peak Result complies with AV limit, AV Result is deemed to comply with AV limit.
3. Test setup: RBW: 1 MHz, VBW: 3 MHz, Sweep time: auto.
4. Peak: Peak detector.
5. AVG: VBW refer to section 6.2.
6. For below 6.5GHz part, filter losses were only considered in the spurious frequency bands and the authorized band were not corrected for Band Reject Filter losses.
The proper operation of the transmitter prior to adding the filter to the measurement chain.
7. Only the worst case emission was recorded, if it complies with the limit, the other emissions deemed to comply with the limit.

Test Mode	Channel	Polarization	Verdict
11ax HE20	5200	Vertical	PASS

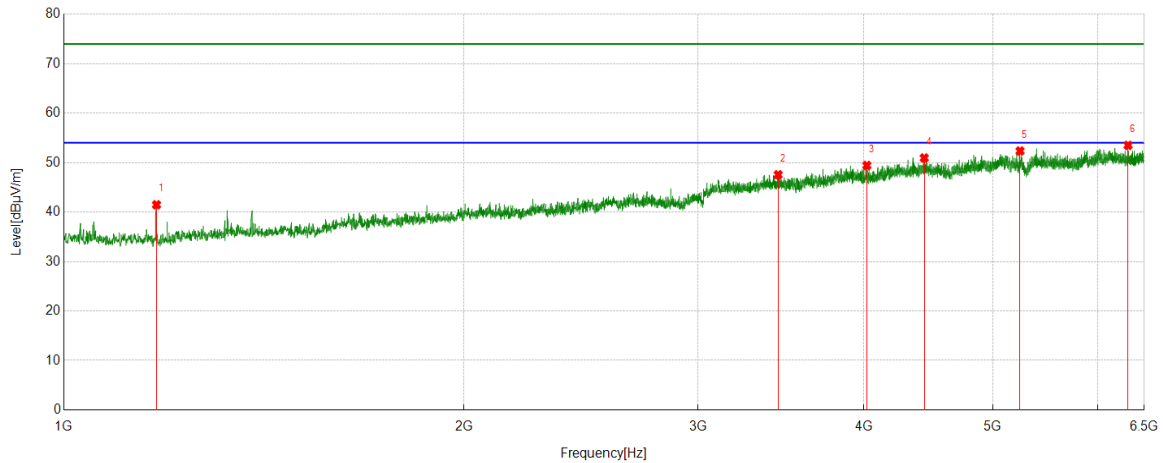


PK Result:

No.	Frequency [MHz]	Reading Level [dBuV]	Correct Factor [dB/m]	Result [dBuV/m]	Limit [dBuV/m]	Margin [dB]	Remark
1	1196.1885	42.27	-2.11	40.16	74.00	-33.84	Vertical
2	1924.1027	39.38	2.48	41.86	74.00	-32.14	Vertical
3	2389.2099	42.59	4.63	47.22	74.00	-26.78	Vertical
4	3699.5777	37.09	12.03	49.12	74.00	-24.88	Vertical
5	5069.8411	35.46	16.48	51.94	74.00	-22.06	Vertical
6	6039.1710	35.69	17.61	53.30	74.00	-20.70	Vertical

- Remark: 1. Measurement = Reading Level + Correct Factor.
2. If Peak Result complies with AV limit, AV Result is deemed to comply with AV limit.
3. Test setup: RBW: 1 MHz, VBW: 3 MHz, Sweep time: auto.
4. Peak: Peak detector.
5. AVG: VBW refer to section 6.2.
6. For below 6.5GHz part, filter losses were only considered in the spurious frequency bands and the authorized band were not corrected for Band Reject Filter losses.
The proper operation of the transmitter prior to adding the filter to the measurement chain.
7. Only the worst case emission was recorded, if it complies with the limit, the other emissions deemed to comply with the limit.

Test Mode	Channel	Polarization	Verdict
11ax HE20	5240	Horizontal	PASS

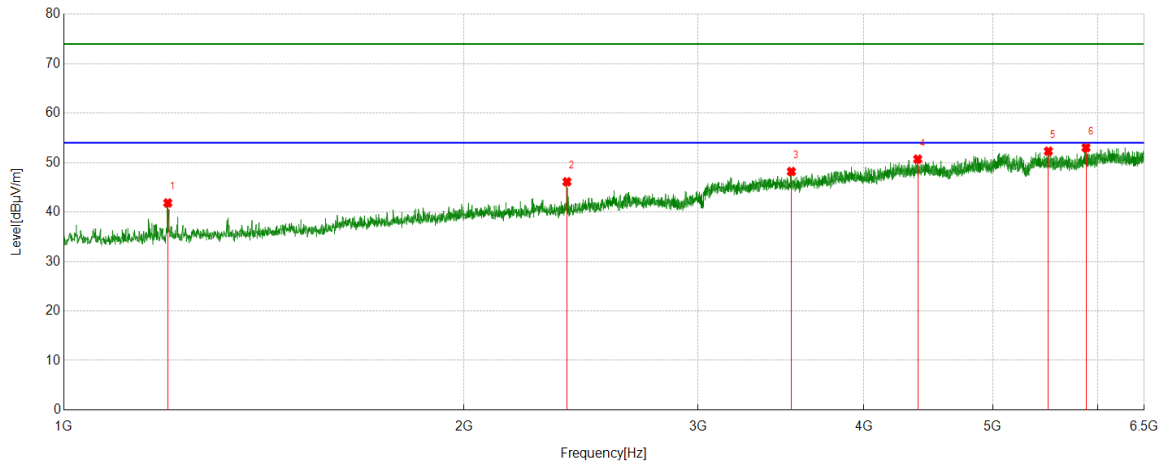


PK Result:

No.	Frequency [MHz]	Reading Level [dBuV]	Correct Factor [dB/m]	Result [dBuV/m]	Limit [dBuV/m]	Margin [dB]	Remark
1	1174.1860	43.46	-1.98	41.48	74.00	-32.52	Horizontal
2	3447.1608	36.79	10.76	47.55	74.00	-26.45	Horizontal
3	4019.8355	36.79	12.64	49.43	74.00	-24.57	Horizontal
4	4440.3267	36.70	14.24	50.94	74.00	-23.06	Horizontal
5	5241.5824	36.05	16.30	52.35	74.00	-21.65	Horizontal
6	6320.3134	34.78	18.71	53.49	74.00	-20.51	Horizontal

- Remark: 1. Measurement = Reading Level + Correct Factor.
2. If Peak Result complies with AV limit, AV Result is deemed to comply with AV limit.
3. Test setup: RBW: 1 MHz, VBW: 3 MHz, Sweep time: auto.
4. Peak: Peak detector.
5. AVG: VBW refer to section 6.2.
6. For below 6.5GHz part, filter losses were only considered in the spurious frequency bands and the authorized band were not corrected for Band Reject Filter losses.
The proper operation of the transmitter prior to adding the filter to the measurement chain.
7. Only the worst case emission was recorded, if it complies with the limit, the other emissions deemed to comply with the limit.

Test Mode	Channel	Polarization	Verdict
11ax HE20	5240	Vertical	PASS

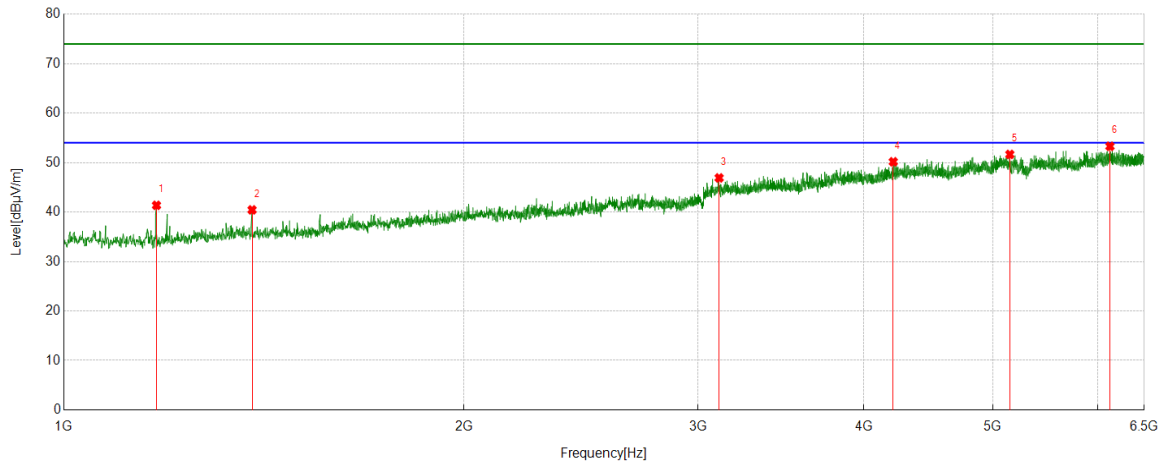


PK Result:

No.	Frequency [MHz]	Reading Level [dBuV]	Correct Factor [dB/m]	Result [dBuV/m]	Limit [dBuV/m]	Margin [dB]	Remark
1	1197.4108	43.94	-2.10	41.84	74.00	-32.16	Vertical
2	2391.0434	41.50	4.63	46.13	74.00	-27.87	Vertical
3	3527.2252	37.30	10.89	48.19	74.00	-25.81	Vertical
4	4390.2100	36.46	14.24	50.70	74.00	-23.30	Vertical
5	5505.6117	35.52	16.79	52.31	74.00	-21.69	Vertical
6	5875.9862	35.67	17.35	53.02	74.00	-20.98	Vertical

- Remark: 1. Measurement = Reading Level + Correct Factor.
2. If Peak Result complies with AV limit, AV Result is deemed to comply with AV limit.
3. Test setup: RBW: 1 MHz, VBW: 3 MHz, Sweep time: auto.
4. Peak: Peak detector.
5. AVG: VBW refer to section 6.2.
6. For below 6.5GHz part, filter losses were only considered in the spurious frequency bands and the authorized band were not corrected for Band Reject Filter losses.
The proper operation of the transmitter prior to adding the filter to the measurement chain.
7. Only the worst case emission was recorded, if it complies with the limit, the other emissions deemed to comply with the limit.

Test Mode	Channel	Polarization	Verdict
11ax HE20	5260	Horizontal	PASS

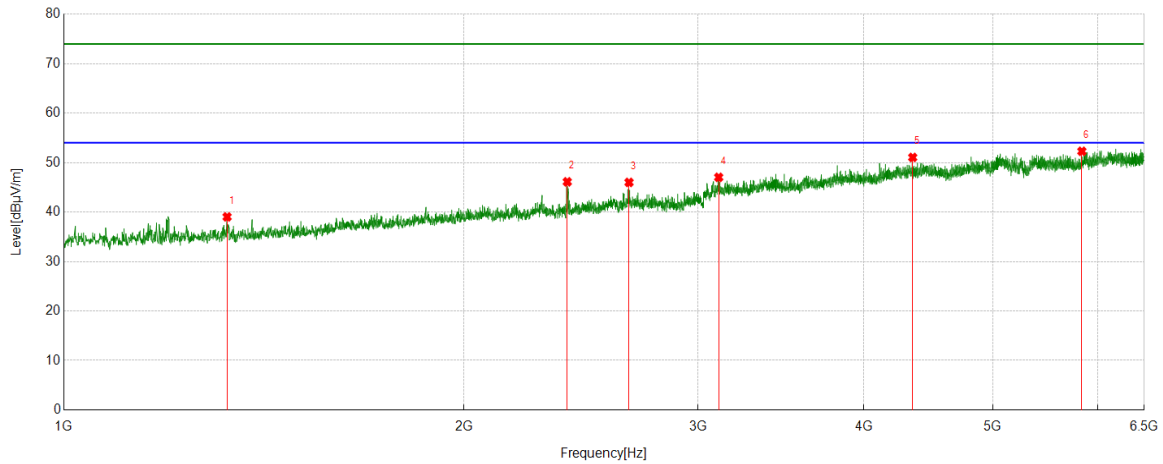


PK Result:

No.	Frequency [MHz]	Reading Level [dBuV]	Correct Factor [dB/m]	Result [dBuV/m]	Limit [dBuV/m]	Margin [dB]	Remark
1	1174.1860	43.34	-1.98	41.36	74.00	-32.64	Horizontal
2	1385.6540	41.42	-0.98	40.44	74.00	-33.56	Horizontal
3	3112.2347	36.40	10.51	46.91	74.00	-27.09	Horizontal
4	4208.0787	36.58	13.59	50.17	74.00	-23.83	Horizontal
5	5149.9055	35.30	16.36	51.66	74.00	-22.34	Horizontal
6	6125.3473	34.88	18.42	53.30	74.00	-20.70	Horizontal

- Remark: 1. Measurement = Reading Level + Correct Factor.
2. If Peak Result complies with AV limit, AV Result is deemed to comply with AV limit.
3. Test setup: RBW: 1 MHz, VBW: 3 MHz, Sweep time: auto.
4. Peak: Peak detector.
5. AVG: VBW refer to section 6.2.
6. For below 6.5GHz part, filter losses were only considered in the spurious frequency bands and the authorized band were not corrected for Band Reject Filter losses.
The proper operation of the transmitter prior to adding the filter to the measurement chain.
7. Only the worst case emission was recorded, if it complies with the limit, the other emissions deemed to comply with the limit.

Test Mode	Channel	Polarization	Verdict
11ax HE20	5260	Vertical	PASS

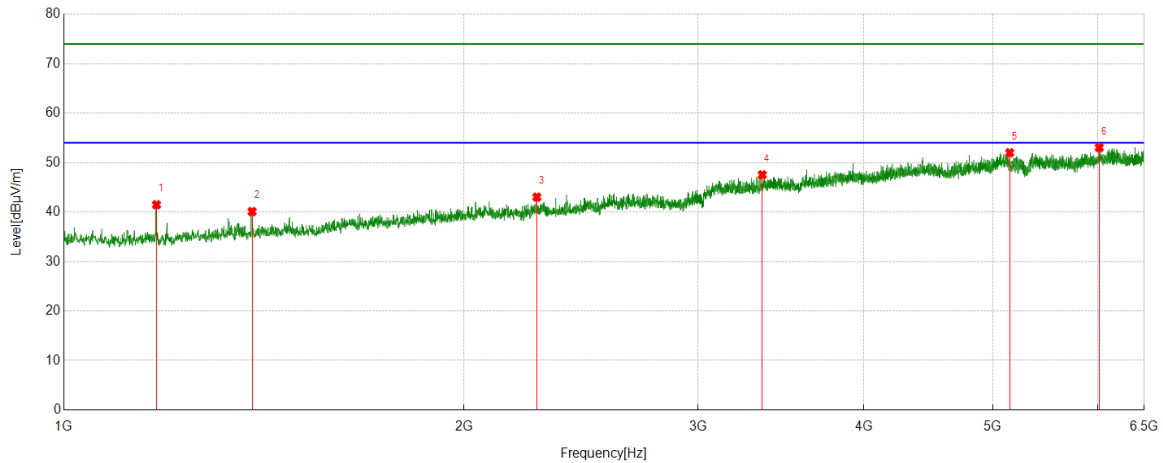


PK Result:

No.	Frequency	Reading Level	Correct Factor	Result	Limit	Margin	Remark
	[MHz]	[dBuV]	[dB/m]	[dBuV/m]	[dBuV/m]	[dB]	
1	1326.9808	40.68	-1.65	39.03	74.00	-34.97	Vertical
2	2392.2658	41.52	4.60	46.12	74.00	-27.88	Vertical
3	2662.4069	39.03	6.97	46.00	74.00	-28.00	Vertical
4	3109.7900	36.26	10.77	47.03	74.00	-26.97	Vertical
5	4352.3169	37.20	13.85	51.05	74.00	-22.95	Vertical
6	5834.4260	35.48	16.81	52.29	74.00	-21.71	Vertical

- Remark: 1. Measurement = Reading Level + Correct Factor.
2. If Peak Result complies with AV limit, AV Result is deemed to comply with AV limit.
3. Test setup: RBW: 1 MHz, VBW: 3 MHz, Sweep time: auto.
4. Peak: Peak detector.
5. AVG: VBW refer to section 6.2.
6. For below 6.5GHz part, filter losses were only considered in the spurious frequency bands and the authorized band were not corrected for Band Reject Filter losses.
The proper operation of the transmitter prior to adding the filter to the measurement chain.
7. Only the worst case emission was recorded, if it complies with the limit, the other emissions deemed to comply with the limit.

Test Mode	Channel	Polarization	Verdict
11ax HE20	5280	Horizontal	PASS

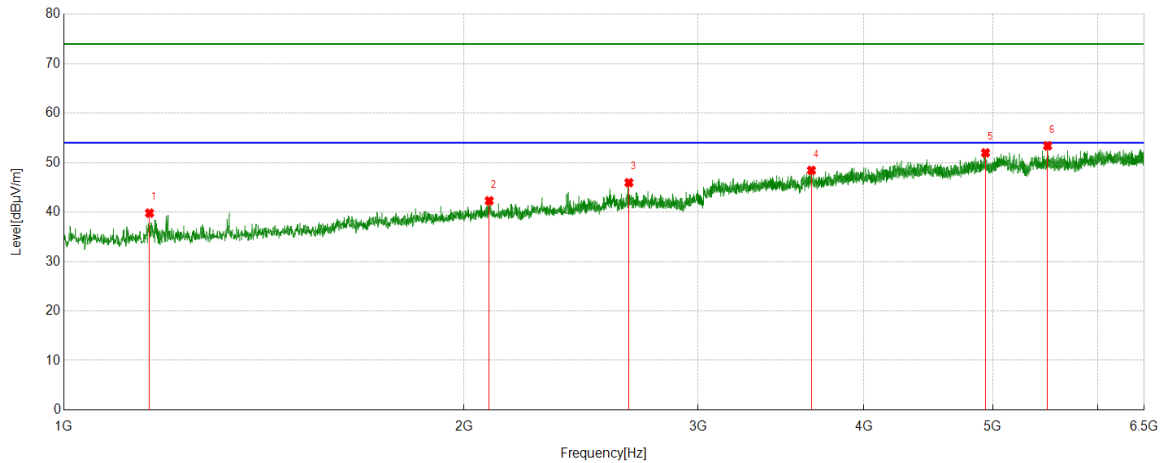


PK Result:

No.	Frequency [MHz]	Reading Level [dBuV]	Correct Factor [dB/m]	Result [dBuV/m]	Limit [dBuV/m]	Margin [dB]	Remark
1	1174.1860	43.47	-1.98	41.49	74.00	-32.51	Horizontal
2	1385.6540	41.09	-0.98	40.11	74.00	-33.89	Horizontal
3	2269.4188	37.81	5.22	43.03	74.00	-30.97	Horizontal
4	3353.6504	36.94	10.59	47.53	74.00	-26.47	Horizontal
5	5148.6832	35.62	16.37	51.99	74.00	-22.01	Horizontal
6	6012.8903	35.41	17.64	53.05	74.00	-20.95	Horizontal

- Remark: 1. Measurement = Reading Level + Correct Factor.
2. If Peak Result complies with AV limit, AV Result is deemed to comply with AV limit.
3. Test setup: RBW: 1 MHz, VBW: 3 MHz, Sweep time: auto.
4. Peak: Peak detector.
5. AVG: VBW refer to section 6.2.
6. For below 6.5GHz part, filter losses were only considered in the spurious frequency bands and the authorized band were not corrected for Band Reject Filter losses.
The proper operation of the transmitter prior to adding the filter to the measurement chain.
7. Only the worst case emission was recorded, if it complies with the limit, the other emissions deemed to comply with the limit.

Test Mode	Channel	Polarization	Verdict
11ax HE20	5280	Vertical	PASS

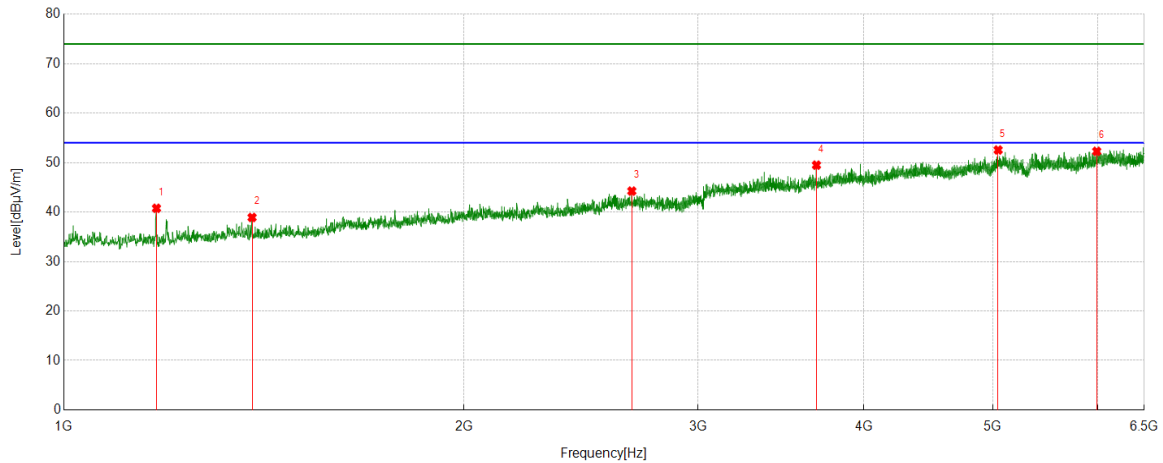


PK Result:

No.	Frequency [MHz]	Reading Level [dBuV]	Correct Factor [dB/m]	Result [dBuV/m]	Limit [dBuV/m]	Margin [dB]	Remark
1	1160.1289	41.78	-1.99	39.79	74.00	-34.21	Vertical
2	2089.7322	38.14	4.14	42.28	74.00	-31.72	Vertical
3	2661.7958	38.94	7.01	45.95	74.00	-28.05	Vertical
4	3651.9058	36.82	11.62	48.44	74.00	-25.56	Vertical
5	4937.2152	36.36	15.61	51.97	74.00	-22.03	Vertical
6	5498.2776	36.83	16.57	53.40	74.00	-20.60	Vertical

- Remark: 1. Measurement = Reading Level + Correct Factor.
2. If Peak Result complies with AV limit, AV Result is deemed to comply with AV limit.
3. Test setup: RBW: 1 MHz, VBW: 3 MHz, Sweep time: auto.
4. Peak: Peak detector.
5. AVG: VBW refer to section 6.2.
6. For below 6.5GHz part, filter losses were only considered in the spurious frequency bands and the authorized band were not corrected for Band Reject Filter losses.
The proper operation of the transmitter prior to adding the filter to the measurement chain.
7. Only the worst case emission was recorded, if it complies with the limit, the other emissions deemed to comply with the limit.

Test Mode	Channel	Polarization	Verdict
11ax HE20	5320	Horizontal	PASS

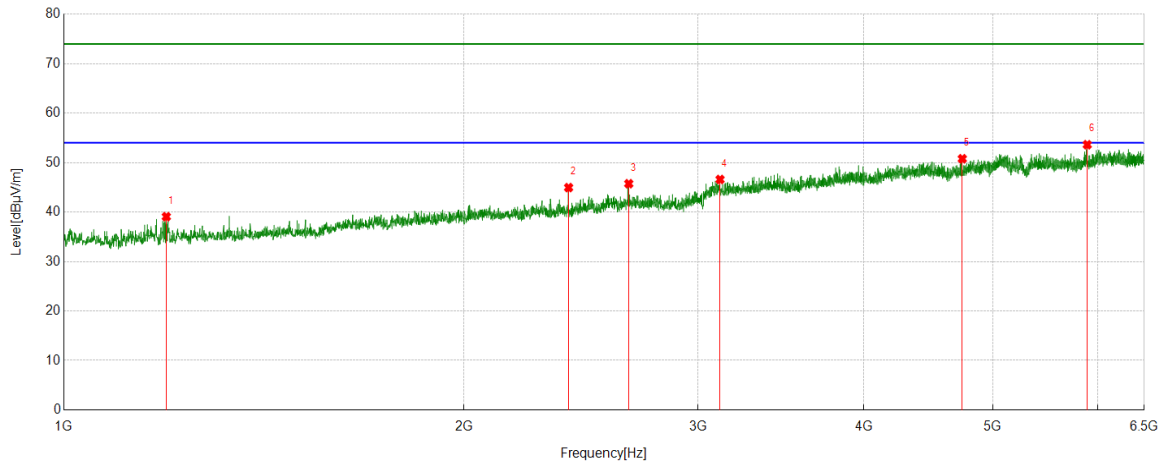


PK Result:

No.	Frequency	Reading Level	Correct Factor	Result	Limit	Margin	Remark
	[MHz]	[dBuV]	[dB/m]	[dBuV/m]	[dBuV/m]	[dB]	
1	1174.1860	42.74	-1.98	40.76	74.00	-33.24	Horizontal
2	1385.6540	39.89	-0.98	38.91	74.00	-35.09	Horizontal
3	2675.2417	37.44	6.80	44.24	74.00	-29.76	Horizontal
4	3683.6871	37.28	12.21	49.49	74.00	-24.51	Horizontal
5	5046.6163	36.55	16.00	52.55	74.00	-21.45	Horizontal
6	5986.6096	34.54	17.74	52.28	74.00	-21.72	Horizontal

- Remark: 1. Measurement = Reading Level + Correct Factor.
2. If Peak Result complies with AV limit, AV Result is deemed to comply with AV limit.
3. Test setup: RBW: 1 MHz, VBW: 3 MHz, Sweep time: auto.
4. Peak: Peak detector.
5. AVG: VBW refer to section 6.2.
6. For below 6.5GHz part, filter losses were only considered in the spurious frequency bands and the authorized band were not corrected for Band Reject Filter losses.
The proper operation of the transmitter prior to adding the filter to the measurement chain.
7. Only the worst case emission was recorded, if it complies with the limit, the other emissions deemed to comply with the limit.

Test Mode	Channel	Polarization	Verdict
11ax HE20	5320	Vertical	PASS

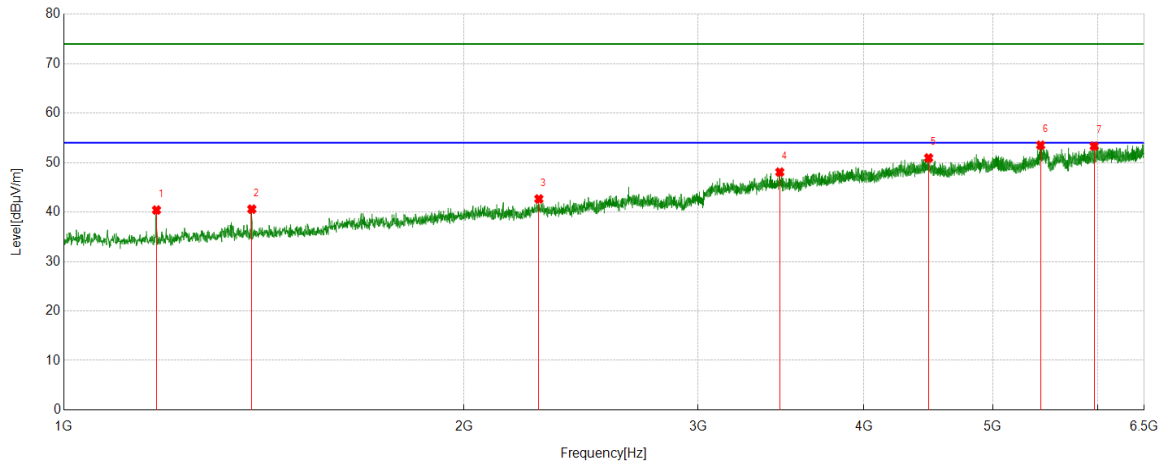


PK Result:

No.	Frequency	Reading Level	Correct Factor	Result	Limit	Margin	Remark
	[MHz]	[dBuV]	[dB/m]	[dBuV/m]	[dBuV/m]	[dB]	
1	1194.3549	41.19	-2.12	39.07	74.00	-34.93	Vertical
2	2397.7664	40.50	4.45	44.95	74.00	-29.05	Vertical
3	2661.1846	38.70	7.04	45.74	74.00	-28.26	Vertical
4	3117.1241	36.65	9.94	46.59	74.00	-27.41	Vertical
5	4742.8603	36.15	14.63	50.78	74.00	-23.22	Vertical
6	5888.8210	35.64	17.98	53.62	74.00	-20.38	Vertical

- Remark: 1. Measurement = Reading Level + Correct Factor.
2. If Peak Result complies with AV limit, AV Result is deemed to comply with AV limit.
3. Test setup: RBW: 1 MHz, VBW: 3 MHz, Sweep time: auto.
4. Peak: Peak detector.
5. AVG: VBW refer to section 6.2.
6. For below 6.5GHz part, filter losses were only considered in the spurious frequency bands and the authorized band were not corrected for Band Reject Filter losses.
The proper operation of the transmitter prior to adding the filter to the measurement chain.
7. Only the worst case emission was recorded, if it complies with the limit, the other emissions deemed to comply with the limit.

Test Mode	Channel	Polarization	Verdict
11ax HE20	5500	Horizontal	PASS

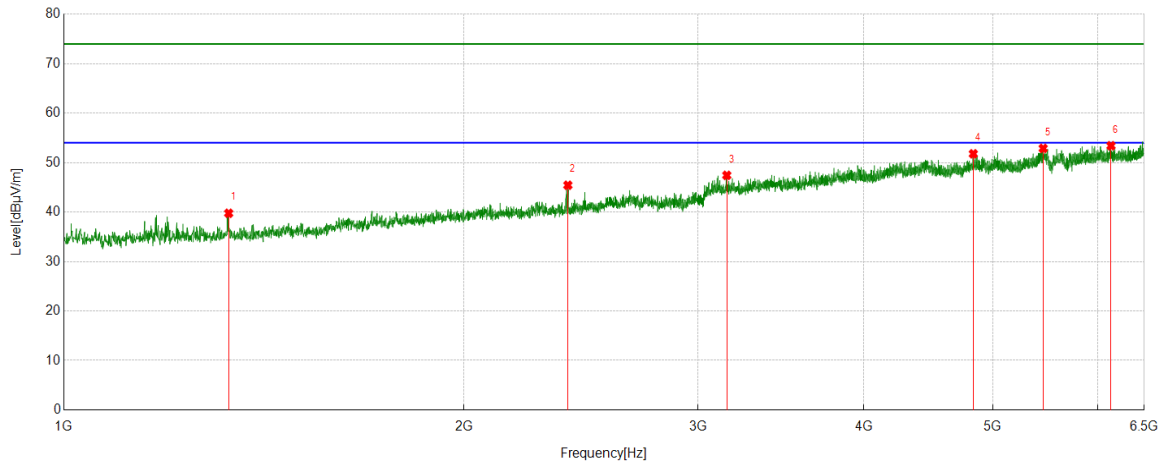


PK Result:

No.	Frequency [MHz]	Reading Level [dBuV]	Correct Factor [dB/m]	Result [dBuV/m]	Limit [dBuV/m]	Margin [dB]	Remark
1	1174.1860	42.30	-1.89	40.41	74.00	-33.59	Horizontal
2	1385.0428	41.76	-1.17	40.59	74.00	-33.41	Horizontal
3	2277.3642	37.73	4.93	42.66	74.00	-31.34	Horizontal
4	3456.9397	37.53	10.55	48.08	74.00	-25.92	Horizontal
5	4473.9415	36.00	14.94	50.94	74.00	-23.06	Horizontal
6	5432.2703	35.61	17.91	53.52	74.00	-20.48	Horizontal
7	5959.7177	35.79	17.55	53.34	74.00	-20.66	Horizontal

- Remark: 1. Measurement = Reading Level + Correct Factor.
2. If Peak Result complies with AV limit, AV Result is deemed to comply with AV limit.
3. Test setup: RBW: 1 MHz, VBW: 3 MHz, Sweep time: auto.
4. Peak: Peak detector.
5. AVG: VBW refer to section 6.2.
6. For below 6.5GHz part, filter losses were only considered in the spurious frequency bands and the authorized band were not corrected for Band Reject Filter losses.
The proper operation of the transmitter prior to adding the filter to the measurement chain.
7. Only the worst case emission was recorded, if it complies with the limit, the other emissions deemed to comply with the limit.

Test Mode	Channel	Polarization	Verdict
11ax HE20	5500	Vertical	PASS

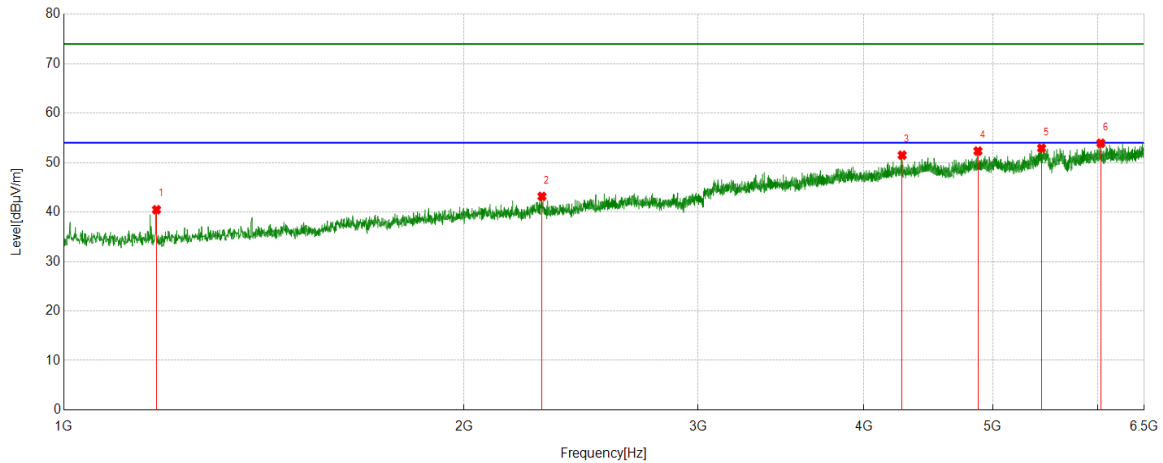


PK Result:

No.	Frequency [MHz]	Reading Level [dBuV]	Correct Factor [dB/m]	Result [dBuV/m]	Limit [dBuV/m]	Margin [dB]	Remark
1	1330.6478	41.31	-1.55	39.76	74.00	-34.24	Vertical
2	2394.7105	41.10	4.33	45.43	74.00	-28.57	Vertical
3	3153.7949	37.76	9.67	47.43	74.00	-26.57	Vertical
4	4833.9260	36.31	15.47	51.78	74.00	-22.22	Vertical
5	5456.1062	35.01	17.87	52.88	74.00	-21.12	Vertical
6	6136.3485	35.21	18.20	53.41	74.00	-20.59	Vertical

- Remark: 1. Measurement = Reading Level + Correct Factor.
2. If Peak Result complies with AV limit, AV Result is deemed to comply with AV limit.
3. Test setup: RBW: 1 MHz, VBW: 3 MHz, Sweep time: auto.
4. Peak: Peak detector.
5. AVG: VBW refer to section 6.2.
6. For below 6.5GHz part, filter losses were only considered in the spurious frequency bands and the authorized band were not corrected for Band Reject Filter losses.
The proper operation of the transmitter prior to adding the filter to the measurement chain.
7. Only the worst case emission was recorded, if it complies with the limit, the other emissions deemed to comply with the limit.

Test Mode	Channel	Polarization	Verdict
11ax HE20	5580	Horizontal	PASS

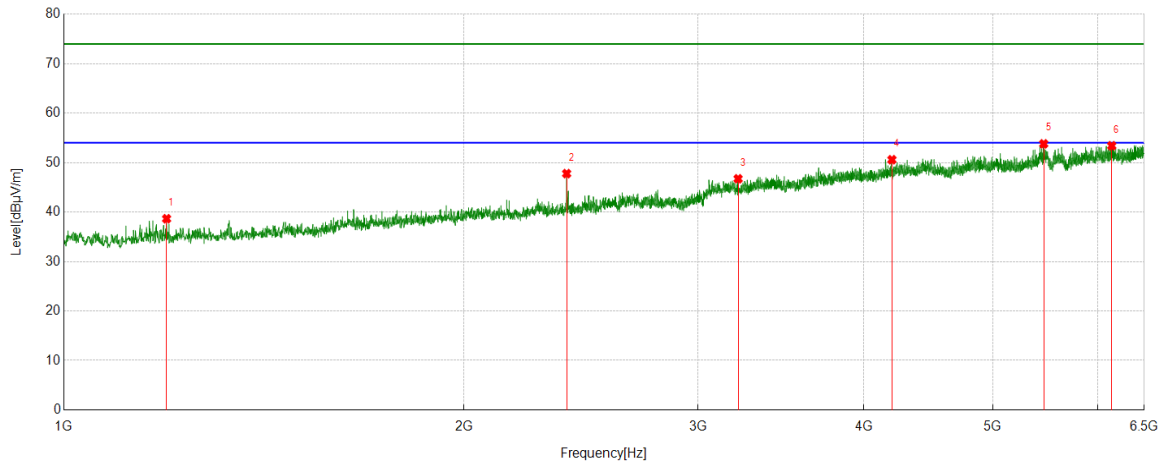


PK Result:

No.	Frequency [MHz]	Reading Level [dBuV]	Correct Factor [dB/m]	Result [dBuV/m]	Limit [dBuV/m]	Margin [dB]	Remark
1	1174.1860	42.36	-1.89	40.47	74.00	-33.53	Horizontal
2	2289.5877	37.75	5.42	43.17	74.00	-30.83	Horizontal
3	4273.4748	37.25	14.25	51.50	74.00	-22.50	Horizontal
4	4873.0414	37.09	15.25	52.34	74.00	-21.66	Horizontal
5	5440.8268	35.03	17.89	52.92	74.00	-21.08	Horizontal
6	6029.3922	36.14	17.78	53.92	74.00	-20.08	Horizontal

- Remark: 1. Measurement = Reading Level + Correct Factor.
2. If Peak Result complies with AV limit, AV Result is deemed to comply with AV limit.
3. Test setup: RBW: 1 MHz, VBW: 3 MHz, Sweep time: auto.
4. Peak: Peak detector.
5. AVG: VBW refer to section 6.2.
6. For below 6.5GHz part, filter losses were only considered in the spurious frequency bands and the authorized band were not corrected for Band Reject Filter losses.
The proper operation of the transmitter prior to adding the filter to the measurement chain.
7. Only the worst case emission was recorded, if it complies with the limit, the other emissions deemed to comply with the limit.

Test Mode	Channel	Polarization	Verdict
11ax HE20	5580	Vertical	PASS

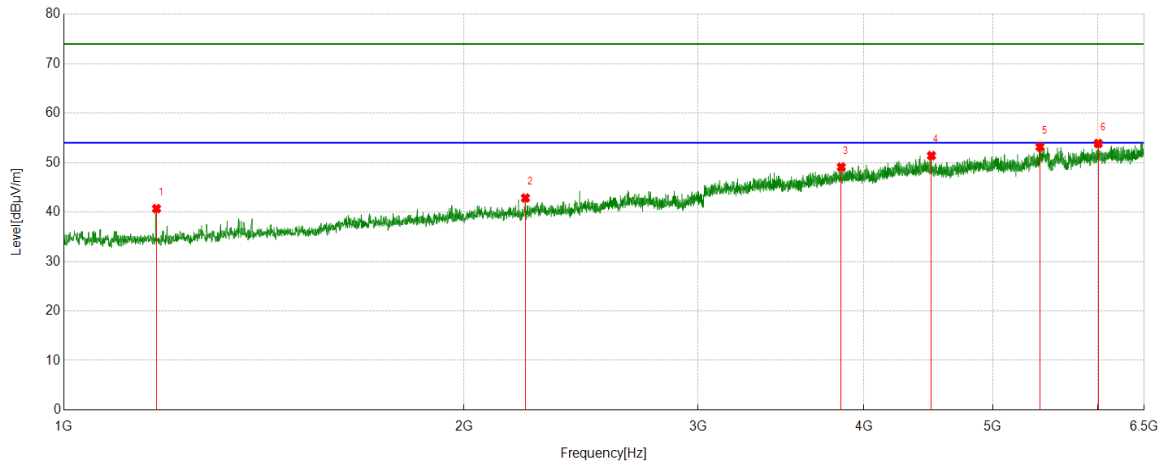


PK Result:

No.	Frequency [MHz]	Reading Level [dBuV]	Correct Factor [dB/m]	Result [dBuV/m]	Limit [dBuV/m]	Margin [dB]	Remark
1	1194.9661	40.61	-1.96	38.65	74.00	-35.35	Vertical
2	2389.8211	43.41	4.37	47.78	74.00	-26.22	Vertical
3	3216.1351	37.40	9.33	46.73	74.00	-27.27	Vertical
4	4198.2998	37.26	13.33	50.59	74.00	-23.41	Vertical
5	5460.9957	35.93	17.87	53.80	74.00	-20.20	Vertical
6	6144.2938	35.21	18.20	53.41	74.00	-20.59	Vertical

- Remark: 1. Measurement = Reading Level + Correct Factor.
2. If Peak Result complies with AV limit, AV Result is deemed to comply with AV limit.
3. Test setup: RBW: 1 MHz, VBW: 3 MHz, Sweep time: auto.
4. Peak: Peak detector.
5. AVG: VBW refer to section 6.2.
6. For below 6.5GHz part, filter losses were only considered in the spurious frequency bands and the authorized band were not corrected for Band Reject Filter losses.
The proper operation of the transmitter prior to adding the filter to the measurement chain.
7. Only the worst case emission was recorded, if it complies with the limit, the other emissions deemed to comply with the limit.

Test Mode	Channel	Polarization	Verdict
11ax HE20	5700	Horizontal	PASS

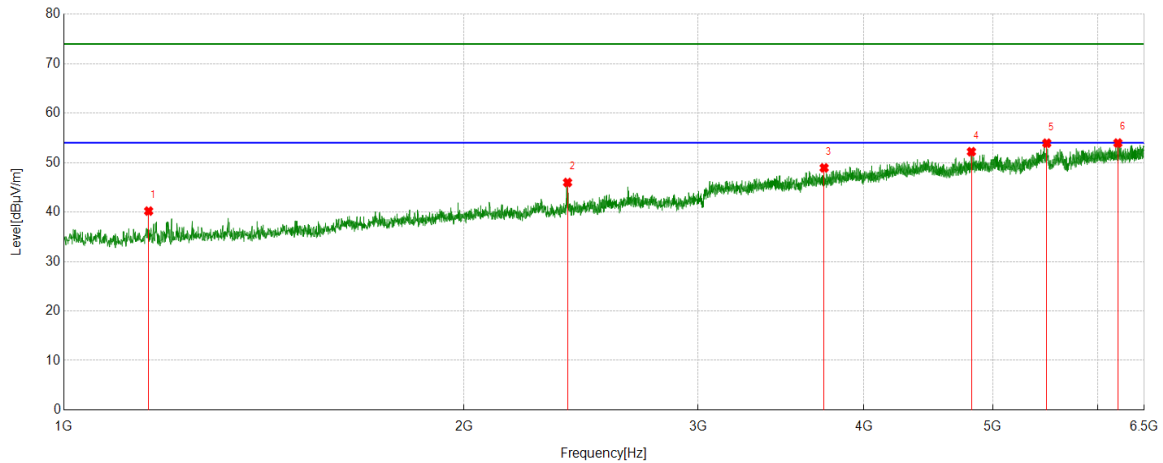


PK Result:

No.	Frequency [MHz]	Reading Level [dBuV]	Correct Factor [dB/m]	Result [dBuV/m]	Limit [dBuV/m]	Margin [dB]	Remark
1	1174.1860	42.59	-1.89	40.70	74.00	-33.30	Horizontal
2	2224.8028	38.83	4.01	42.84	74.00	-31.16	Horizontal
3	3845.6495	36.53	12.57	49.10	74.00	-24.90	Horizontal
4	4495.9440	37.05	14.36	51.41	74.00	-22.59	Horizontal
5	5425.5473	35.54	17.64	53.18	74.00	-20.82	Horizontal
6	6001.8891	36.03	17.84	53.87	74.00	-20.13	Horizontal

- Remark: 1. Measurement = Reading Level + Correct Factor.
2. If Peak Result complies with AV limit, AV Result is deemed to comply with AV limit.
3. Test setup: RBW: 1 MHz, VBW: 3 MHz, Sweep time: auto.
4. Peak: Peak detector.
5. AVG: VBW refer to section 6.2.
6. For below 6.5GHz part, filter losses were only considered in the spurious frequency bands and the authorized band were not corrected for Band Reject Filter losses.
The proper operation of the transmitter prior to adding the filter to the measurement chain.
7. Only the worst case emission was recorded, if it complies with the limit, the other emissions deemed to comply with the limit.

Test Mode	Channel	Polarization	Verdict
11ax HE20	5700	Vertical	PASS

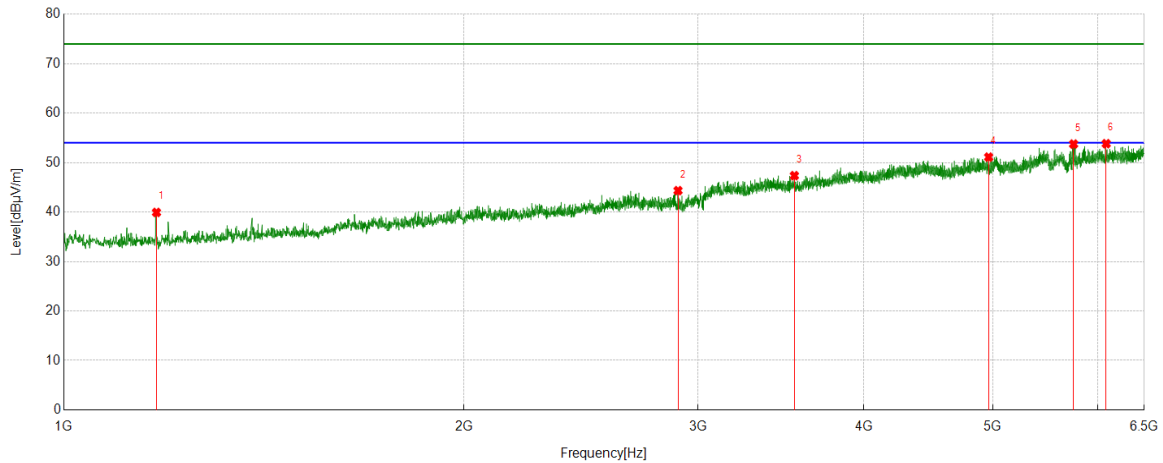


PK Result:

No.	Frequency [MHz]	Reading Level [dBuV]	Correct Factor [dB/m]	Result [dBuV/m]	Limit [dBuV/m]	Margin [dB]	Remark
1	1158.2954	42.20	-2.00	40.20	74.00	-33.80	Vertical
2	2393.4882	41.64	4.34	45.98	74.00	-28.02	Vertical
3	3733.1926	37.24	11.69	48.93	74.00	-25.07	Vertical
4	4818.0353	36.86	15.34	52.20	74.00	-21.80	Vertical
5	5490.3323	36.10	17.83	53.93	74.00	-20.07	Vertical
6	6209.6900	35.47	18.49	53.96	74.00	-20.04	Vertical

- Remark: 1. Measurement = Reading Level + Correct Factor.
2. If Peak Result complies with AV limit, AV Result is deemed to comply with AV limit.
3. Test setup: RBW: 1 MHz, VBW: 3 MHz, Sweep time: auto.
4. Peak: Peak detector.
5. AVG: VBW refer to section 6.2.
6. For below 6.5GHz part, filter losses were only considered in the spurious frequency bands and the authorized band were not corrected for Band Reject Filter losses.
The proper operation of the transmitter prior to adding the filter to the measurement chain.
7. Only the worst case emission was recorded, if it complies with the limit, the other emissions deemed to comply with the limit.

Test Mode	Channel	Polarization	Verdict
11ax HE20	5720	Horizontal	PASS

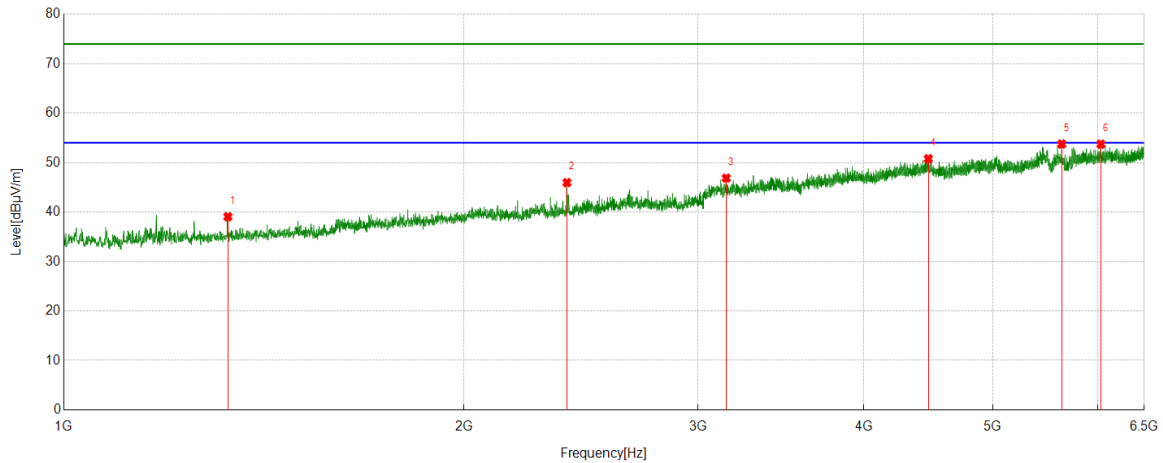


PK Result:

No.	Frequency [MHz]	Reading Level [dBuV]	Correct Factor [dB/m]	Result [dBuV/m]	Limit [dBuV/m]	Margin [dB]	Remark
1	1174.1860	41.82	-1.89	39.93	74.00	-34.07	Horizontal
2	2898.3220	37.68	6.66	44.34	74.00	-29.66	Horizontal
3	3545.5606	36.21	11.15	47.36	74.00	-26.64	Horizontal
4	4964.1071	36.06	15.05	51.11	74.00	-22.89	Horizontal
5	5751.3057	36.59	17.16	53.75	74.00	-20.25	Horizontal
6	6085.6206	35.66	18.17	53.83	74.00	-20.17	Horizontal

- Remark: 1. Measurement = Reading Level + Correct Factor.
2. If Peak Result complies with AV limit, AV Result is deemed to comply with AV limit.
3. Test setup: RBW: 1 MHz, VBW: 3 MHz, Sweep time: auto.
4. Peak: Peak detector.
5. AVG: VBW refer to section 6.2.
6. For below 6.5GHz part, filter losses were only considered in the spurious frequency bands and the authorized band were not corrected for Band Reject Filter losses.
The proper operation of the transmitter prior to adding the filter to the measurement chain.
7. Only the worst case emission was recorded, if it complies with the limit, the other emissions deemed to comply with the limit.

Test Mode	Channel	Polarization	Verdict
11ax HE20	5720	Vertical	PASS

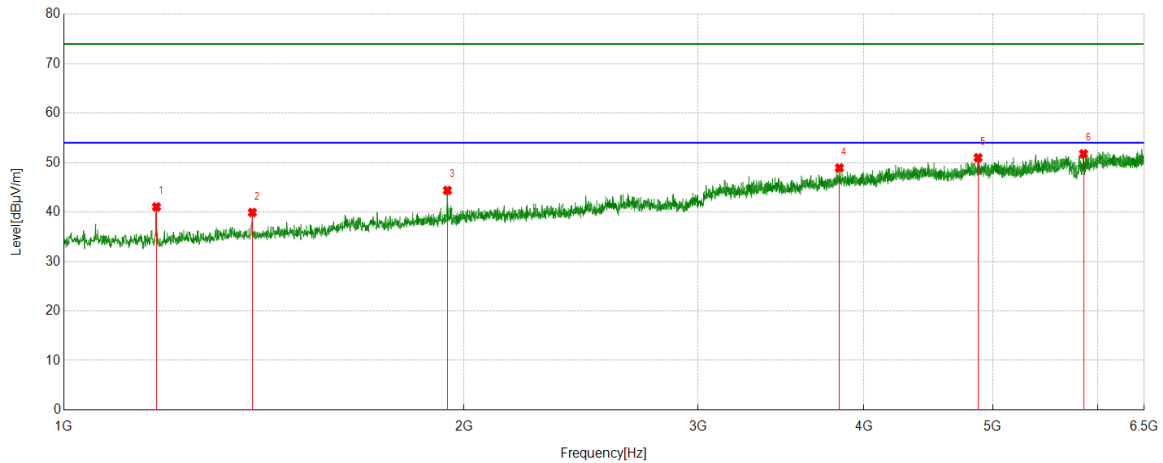


PK Result:

No.	Frequency [MHz]	Reading Level [dBuV]	Correct Factor [dB/m]	Result [dBuV/m]	Limit [dBuV/m]	Margin [dB]	Remark
1	1328.8143	40.62	-1.56	39.06	74.00	-34.94	Vertical
2	2391.0434	41.60	4.36	45.96	74.00	-28.04	Vertical
3	3150.7390	37.19	9.68	46.87	74.00	-27.13	Vertical
4	4471.4968	35.66	15.13	50.79	74.00	-23.21	Vertical
5	5634.5705	36.10	17.66	53.76	74.00	-20.24	Vertical
6	6030.0033	35.94	17.78	53.72	74.00	-20.28	Vertical

- Remark: 1. Measurement = Reading Level + Correct Factor.
2. If Peak Result complies with AV limit, AV Result is deemed to comply with AV limit.
3. Test setup: RBW: 1 MHz, VBW: 3 MHz, Sweep time: auto.
4. Peak: Peak detector.
5. AVG: VBW refer to section 6.2.
6. For below 6.5GHz part, filter losses were only considered in the spurious frequency bands and the authorized band were not corrected for Band Reject Filter losses.
The proper operation of the transmitter prior to adding the filter to the measurement chain.
7. Only the worst case emission was recorded, if it complies with the limit, the other emissions deemed to comply with the limit.

Test Mode	Channel	Polarization	Verdict
11ax HE20	5745	Horizontal	PASS

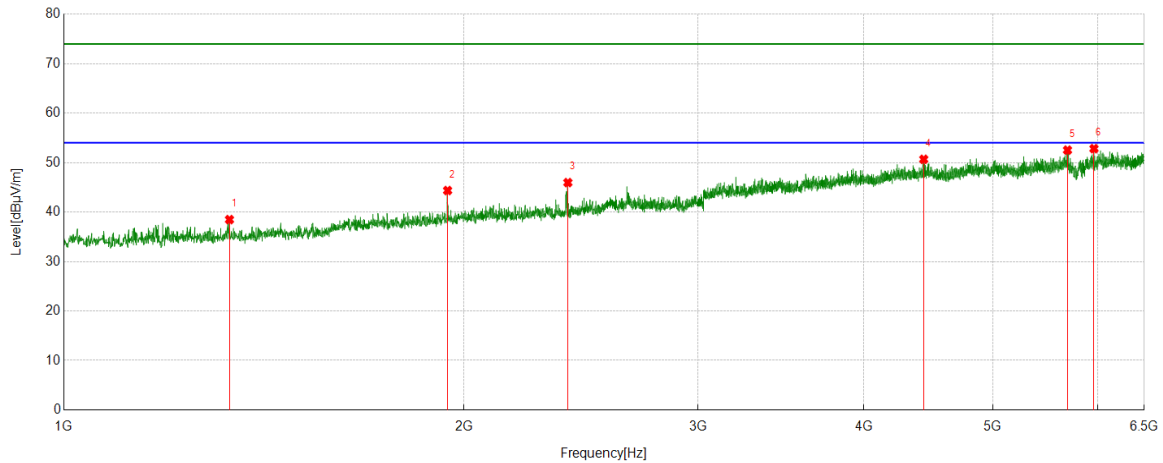


PK Result:

No.	Frequency [MHz]	Reading Level [dBuV]	Correct Factor [dB/m]	Result [dBuV/m]	Limit [dBuV/m]	Margin [dB]	Remark
1	1174.1860	43.01	-1.97	41.04	74.00	-32.96	Horizontal
2	1386.2651	41.17	-1.25	39.92	74.00	-34.08	Horizontal
3	1943.6604	41.66	2.72	44.38	74.00	-29.62	Horizontal
4	3832.8148	36.52	12.41	48.93	74.00	-25.07	Horizontal
5	4874.2638	36.24	14.75	50.99	74.00	-23.01	Horizontal
6	5850.9279	34.96	16.82	51.78	74.00	-22.22	Horizontal

- Remark: 1. Measurement = Reading Level + Correct Factor.
2. If Peak Result complies with AV limit, AV Result is deemed to comply with AV limit.
3. Test setup: RBW: 1 MHz, VBW: 3 MHz, Sweep time: auto.
4. Peak: Peak detector.
5. AVG: VBW refer to section 6.2.
6. For below 6.5GHz part, filter losses were only considered in the spurious frequency bands and the authorized band were not corrected for Band Reject Filter losses.
The proper operation of the transmitter prior to adding the filter to the measurement chain.
7. Only the worst case emission was recorded, if it complies with the limit, the other emissions deemed to comply with the limit.

Test Mode	Channel	Polarization	Verdict
11ax HE20	5745	Vertical	PASS

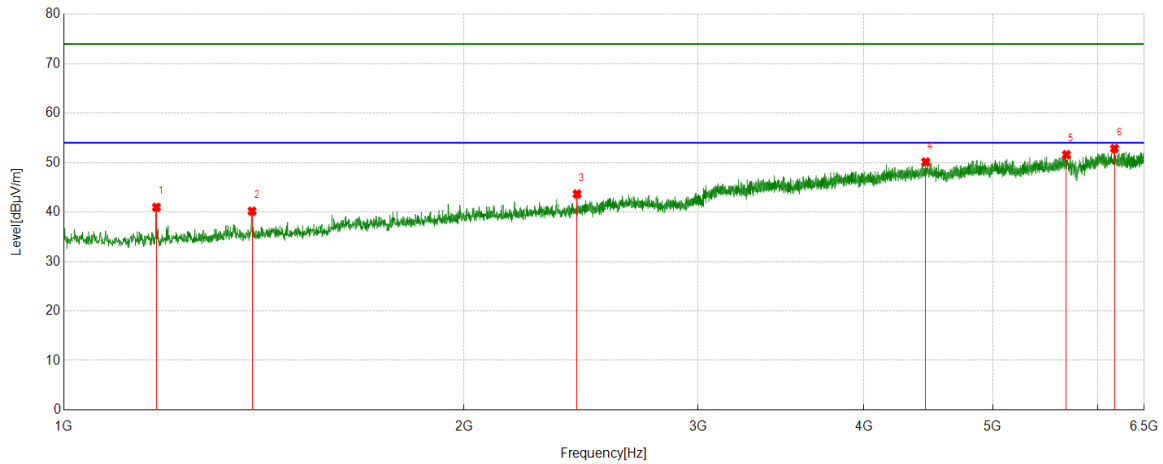


PK Result:

No.	Frequency [MHz]	Reading Level [dBuV]	Correct Factor [dB/m]	Result [dBuV/m]	Limit [dBuV/m]	Margin [dB]	Remark
1	1332.4814	39.94	-1.46	38.48	74.00	-35.52	Vertical
2	1944.2716	41.64	2.72	44.36	74.00	-29.64	Vertical
3	2394.7105	41.61	4.35	45.96	74.00	-28.04	Vertical
4	4436.0484	36.74	13.93	50.67	74.00	-23.33	Vertical
5	5690.7990	35.93	16.60	52.53	74.00	-21.47	Vertical
6	5957.8842	35.66	17.16	52.82	74.00	-21.18	Vertical

- Remark: 1. Measurement = Reading Level + Correct Factor.
2. If Peak Result complies with AV limit, AV Result is deemed to comply with AV limit.
3. Test setup: RBW: 1 MHz, VBW: 3 MHz, Sweep time: auto.
4. Peak: Peak detector.
5. AVG: VBW refer to section 6.2.
6. For below 6.5GHz part, filter losses were only considered in the spurious frequency bands and the authorized band were not corrected for Band Reject Filter losses.
The proper operation of the transmitter prior to adding the filter to the measurement chain.
7. Only the worst case emission was recorded, if it complies with the limit, the other emissions deemed to comply with the limit.

Test Mode	Channel	Polarization	Verdict
11ax HE20	5785	Horizontal	PASS

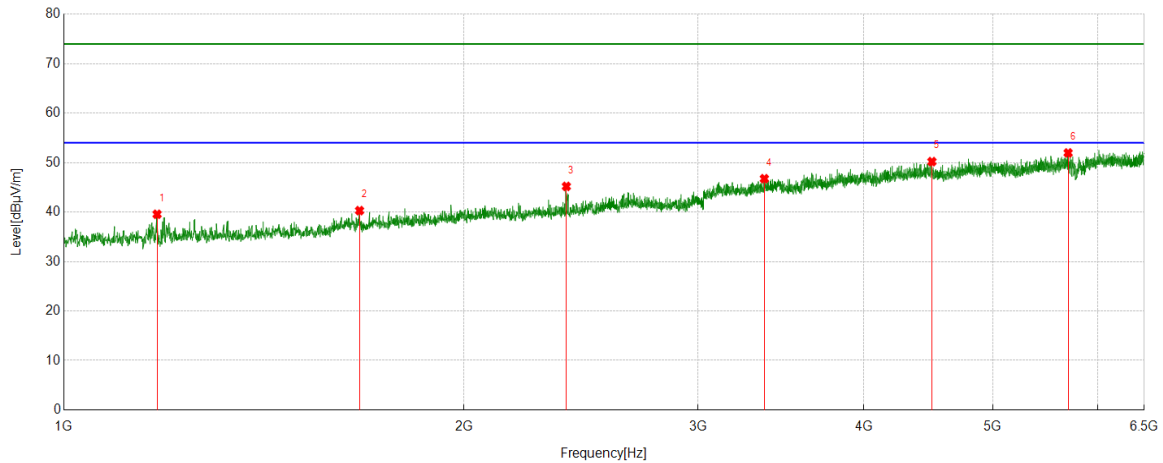


PK Result:

No.	Frequency	Reading Level	Correct Factor	Result	Limit	Margin	Remark
	[MHz]	[dBuV]	[dB/m]	[dBuV/m]	[dBuV/m]	[dB]	
1	1174.1860	42.93	-1.97	40.96	74.00	-33.04	Horizontal
2	1385.6540	41.42	-1.24	40.18	74.00	-33.82	Horizontal
3	2433.2148	38.61	5.04	43.65	74.00	-30.35	Horizontal
4	4451.9391	35.86	14.27	50.13	74.00	-23.87	Horizontal
5	5680.4089	34.96	16.65	51.61	74.00	-22.39	Horizontal
6	6173.6304	34.81	18.04	52.85	74.00	-21.15	Horizontal

- Remark: 1. Measurement = Reading Level + Correct Factor.
2. If Peak Result complies with AV limit, AV Result is deemed to comply with AV limit.
3. Test setup: RBW: 1 MHz, VBW: 3 MHz, Sweep time: auto.
4. Peak: Peak detector.
5. AVG: VBW refer to section 6.2.
6. For below 6.5GHz part, filter losses were only considered in the spurious frequency bands and the authorized band were not corrected for Band Reject Filter losses.
The proper operation of the transmitter prior to adding the filter to the measurement chain.
7. Only the worst case emission was recorded, if it complies with the limit, the other emissions deemed to comply with the limit.

Test Mode	Channel	Polarization	Verdict
11ax HE20	5785	Vertical	PASS

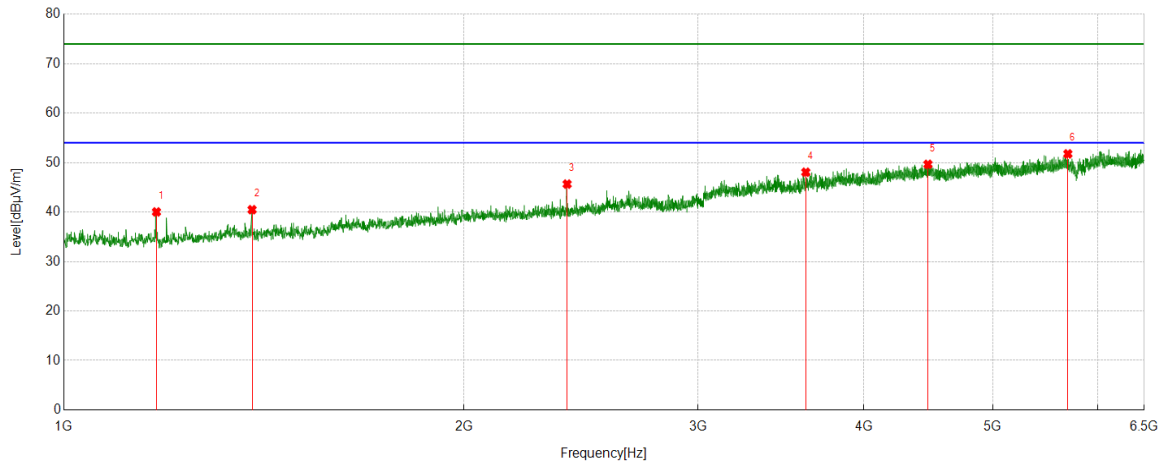


PK Result:

No.	Frequency [MHz]	Reading Level [dBuV]	Correct Factor [dB/m]	Result [dBuV/m]	Limit [dBuV/m]	Margin [dB]	Remark
1	1175.4084	41.55	-1.99	39.56	74.00	-34.44	Vertical
2	1669.2410	38.56	1.74	40.30	74.00	-33.70	Vertical
3	2388.5987	41.05	4.14	45.19	74.00	-28.81	Vertical
4	3365.8740	36.45	10.30	46.75	74.00	-27.25	Vertical
5	4499.6111	36.15	14.05	50.20	74.00	-23.80	Vertical
6	5696.9108	35.39	16.57	51.96	74.00	-22.04	Vertical

- Remark: 1. Measurement = Reading Level + Correct Factor.
2. If Peak Result complies with AV limit, AV Result is deemed to comply with AV limit.
3. Test setup: RBW: 1 MHz, VBW: 3 MHz, Sweep time: auto.
4. Peak: Peak detector.
5. AVG: VBW refer to section 6.2.
6. For below 6.5GHz part, filter losses were only considered in the spurious frequency bands and the authorized band were not corrected for Band Reject Filter losses.
The proper operation of the transmitter prior to adding the filter to the measurement chain.
7. Only the worst case emission was recorded, if it complies with the limit, the other emissions deemed to comply with the limit.

Test Mode	Channel	Polarization	Verdict
11ax HE20	5825	Horizontal	PASS

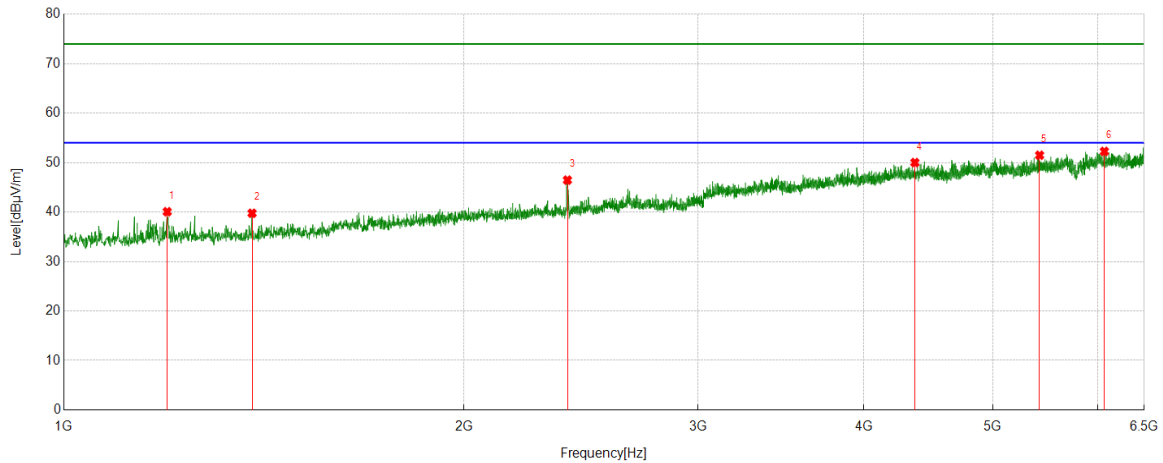


PK Result:

No.	Frequency [MHz]	Reading Level [dBuV]	Correct Factor [dB/m]	Result [dBuV/m]	Limit [dBuV/m]	Margin [dB]	Remark
1	1174.1860	42.00	-1.97	40.03	74.00	-33.97	Horizontal
2	1385.6540	41.72	-1.24	40.48	74.00	-33.52	Horizontal
3	2391.6546	41.46	4.20	45.66	74.00	-28.34	Horizontal
4	3616.4574	37.01	11.05	48.06	74.00	-25.94	Horizontal
5	4468.4409	34.99	14.66	49.65	74.00	-24.35	Horizontal
6	5694.4661	35.20	16.57	51.77	74.00	-22.23	Horizontal

- Remark: 1. Measurement = Reading Level + Correct Factor.
2. If Peak Result complies with AV limit, AV Result is deemed to comply with AV limit.
3. Test setup: RBW: 1 MHz, VBW: 3 MHz, Sweep time: auto.
4. Peak: Peak detector.
5. AVG: VBW refer to section 6.2.
6. For below 6.5GHz part, filter losses were only considered in the spurious frequency bands and the authorized band were not corrected for Band Reject Filter losses.
The proper operation of the transmitter prior to adding the filter to the measurement chain.
7. Only the worst case emission was recorded, if it complies with the limit, the other emissions deemed to comply with the limit.

Test Mode	Channel	Polarization	Verdict
11ax HE20	5825	Vertical	PASS

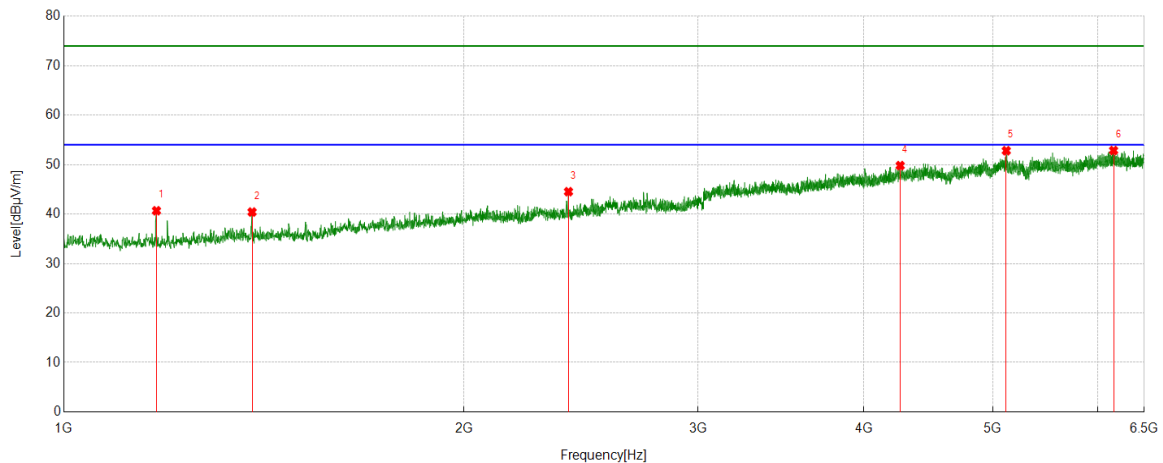


PK Result:

No.	Frequency [MHz]	Reading Level [dBuV]	Correct Factor [dB/m]	Result [dBuV/m]	Limit [dBuV/m]	Margin [dB]	Remark
1	1196.1885	41.96	-1.89	40.07	74.00	-33.93	Vertical
2	1385.6540	41.00	-1.24	39.76	74.00	-34.24	Vertical
3	2392.8770	42.21	4.25	46.46	74.00	-27.54	Vertical
4	4368.8188	36.57	13.44	50.01	74.00	-23.99	Vertical
5	5422.4914	35.28	16.21	51.49	74.00	-22.51	Vertical
6	6066.0629	34.42	17.85	52.27	74.00	-21.73	Vertical

- Remark: 1. Measurement = Reading Level + Correct Factor.
2. If Peak Result complies with AV limit, AV Result is deemed to comply with AV limit.
3. Test setup: RBW: 1 MHz, VBW: 3 MHz, Sweep time: auto.
4. Peak: Peak detector.
5. AVG: VBW refer to section 6.2.
6. For below 6.5GHz part, filter losses were only considered in the spurious frequency bands and the authorized band were not corrected for Band Reject Filter losses.
The proper operation of the transmitter prior to adding the filter to the measurement chain.
7. Only the worst case emission was recorded, if it complies with the limit, the other emissions deemed to comply with the limit.

Test Mode	Channel	Polarization	Verdict
11ax HE40	5190	Horizontal	PASS

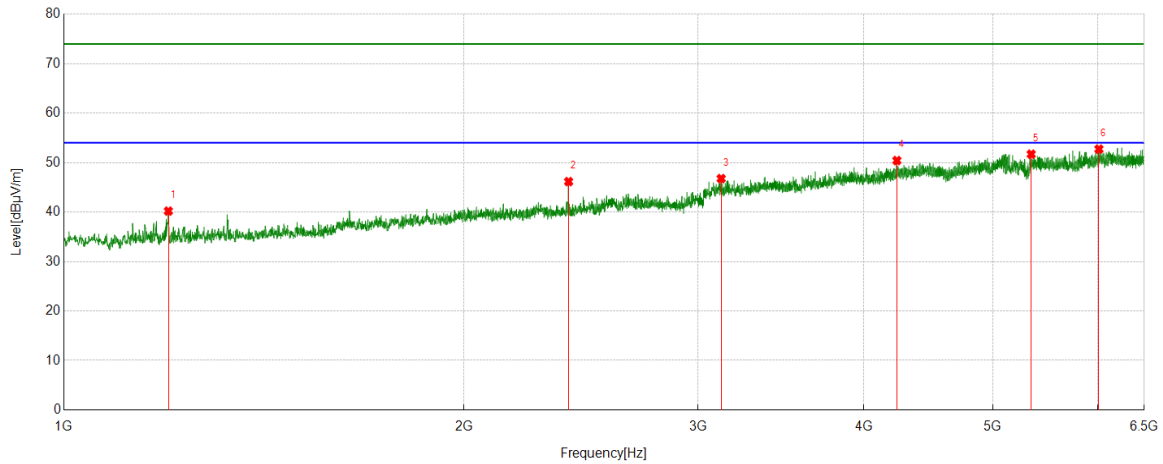


PK Result:

No.	Frequency	Reading Level	Correct Factor	Result	Limit	Margin	Remark
	[MHz]	[dBuV]	[dB/m]	[dBuV/m]	[dBuV/m]	[dB]	
1	1174.1860	42.65	-1.98	40.67	74.00	-33.33	Horizontal
2	1385.6540	41.39	-0.98	40.41	74.00	-33.59	Horizontal
3	2397.1552	40.05	4.48	44.53	74.00	-29.47	Horizontal
4	4258.8065	36.11	13.69	49.80	74.00	-24.20	Horizontal
5	5118.1242	36.27	16.54	52.81	74.00	-21.19	Horizontal
6	6163.8515	34.70	18.16	52.86	74.00	-21.14	Horizontal

- Remark: 1. Measurement = Reading Level + Correct Factor.
2. If Peak Result complies with AV limit, AV Result is deemed to comply with AV limit.
3. Test setup: RBW: 1 MHz, VBW: 3 MHz, Sweep time: auto.
4. Peak: Peak detector.
5. AVG: VBW refer to section 6.2.
6. For below 6.5GHz part, filter losses were only considered in the spurious frequency bands and the authorized band were not corrected for Band Reject Filter losses.
The proper operation of the transmitter prior to adding the filter to the measurement chain.
7. Only the worst case emission was recorded, if it complies with the limit, the other emissions deemed to comply with the limit.

Test Mode	Channel	Polarization	Verdict
11ax HE40	5190	Vertical	PASS

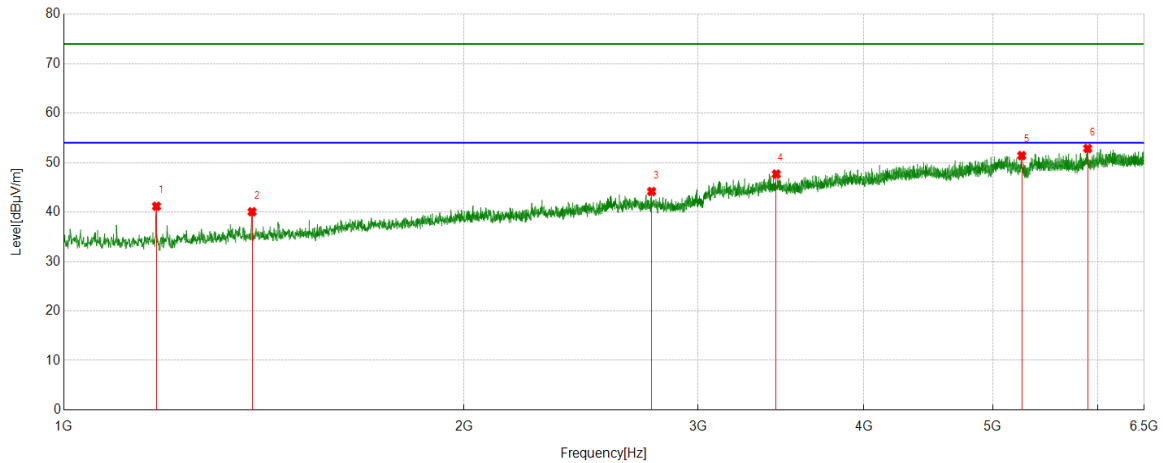


PK Result:

No.	Frequency	Reading Level	Correct Factor	Result	Limit	Margin	Remark
	[MHz]	[dBuV]	[dB/m]	[dBuV/m]	[dBuV/m]	[dB]	
1	1198.6332	42.29	-2.09	40.20	74.00	-33.80	Vertical
2	2397.7664	41.71	4.45	46.16	74.00	-27.84	Vertical
3	3123.2359	36.94	9.83	46.77	74.00	-27.23	Vertical
4	4234.3594	36.73	13.69	50.42	74.00	-23.58	Vertical
5	5344.2605	34.90	16.81	51.71	74.00	-22.29	Vertical
6	6009.2232	35.04	17.69	52.73	74.00	-21.27	Vertical

- Remark: 1. Measurement = Reading Level + Correct Factor.
2. If Peak Result complies with AV limit, AV Result is deemed to comply with AV limit.
3. Test setup: RBW: 1 MHz, VBW: 3 MHz, Sweep time: auto.
4. Peak: Peak detector.
5. AVG: VBW refer to section 6.2.
6. For below 6.5GHz part, filter losses were only considered in the spurious frequency bands and the authorized band were not corrected for Band Reject Filter losses.
The proper operation of the transmitter prior to adding the filter to the measurement chain.
7. Only the worst case emission was recorded, if it complies with the limit, the other emissions deemed to comply with the limit.

Test Mode	Channel	Polarization	Verdict
11ax HE40	5230	Horizontal	PASS

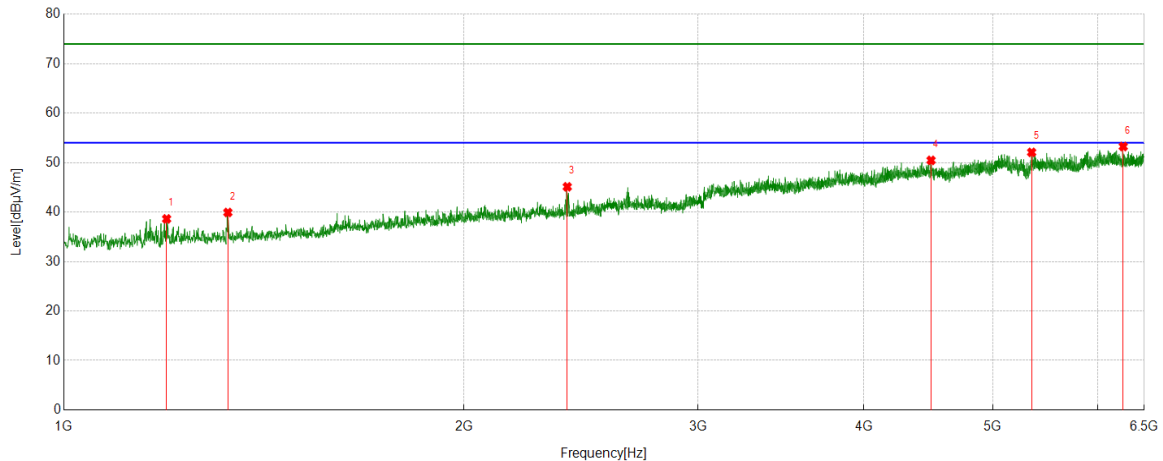


PK Result:

No.	Frequency	Reading Level	Correct Factor	Result	Limit	Margin	Remark
	[MHz]	[dBuV]	[dB/m]	[dBuV/m]	[dBuV/m]	[dB]	
1	1174.1860	43.15	-1.98	41.17	74.00	-32.83	Horizontal
2	1385.6540	41.04	-0.98	40.06	74.00	-33.94	Horizontal
3	2768.7521	37.72	6.43	44.15	74.00	-29.85	Horizontal
4	3436.1596	37.39	10.28	47.67	74.00	-26.33	Horizontal
5	5257.4731	35.08	16.34	51.42	74.00	-22.58	Horizontal
6	5893.0992	34.97	17.89	52.86	74.00	-21.14	Horizontal

- Remark: 1. Measurement = Reading Level + Correct Factor.
2. If Peak Result complies with AV limit, AV Result is deemed to comply with AV limit.
3. Test setup: RBW: 1 MHz, VBW: 3 MHz, Sweep time: auto.
4. Peak: Peak detector.
5. AVG: VBW refer to section 6.2.
6. For below 6.5GHz part, filter losses were only considered in the spurious frequency bands and the authorized band were not corrected for Band Reject Filter losses.
The proper operation of the transmitter prior to adding the filter to the measurement chain.
7. Only the worst case emission was recorded, if it complies with the limit, the other emissions deemed to comply with the limit.

Test Mode	Channel	Polarization	Verdict
11ax HE40	5230	Vertical	PASS

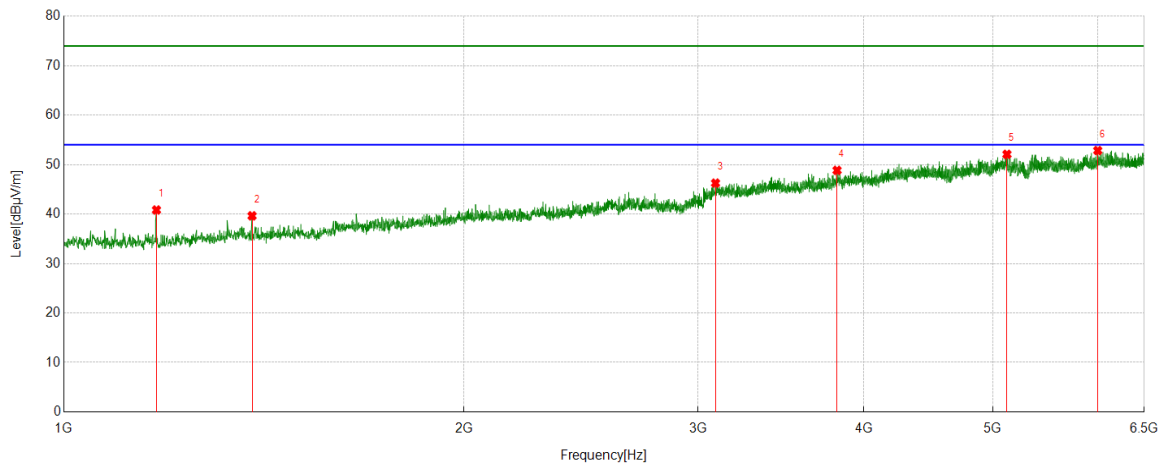


PK Result:

No.	Frequency	Reading Level	Correct Factor	Result	Limit	Margin	Remark
	[MHz]	[dBuV]	[dB/m]	[dBuV/m]	[dBuV/m]	[dB]	
1	1194.9661	40.74	-2.12	38.62	74.00	-35.38	Vertical
2	1328.8143	41.55	-1.63	39.92	74.00	-34.08	Vertical
3	2392.2658	40.51	4.60	45.11	74.00	-28.89	Vertical
4	4492.8881	36.35	14.11	50.46	74.00	-23.54	Vertical
5	5347.9275	35.24	16.84	52.08	74.00	-21.92	Vertical
6	6267.7520	34.58	18.67	53.25	74.00	-20.75	Vertical

- Remark: 1. Measurement = Reading Level + Correct Factor.
2. If Peak Result complies with AV limit, AV Result is deemed to comply with AV limit.
3. Test setup: RBW: 1 MHz, VBW: 3 MHz, Sweep time: auto.
4. Peak: Peak detector.
5. AVG: VBW refer to section 6.2.
6. For below 6.5GHz part, filter losses were only considered in the spurious frequency bands and the authorized band were not corrected for Band Reject Filter losses.
The proper operation of the transmitter prior to adding the filter to the measurement chain.
7. Only the worst case emission was recorded, if it complies with the limit, the other emissions deemed to comply with the limit.

Test Mode	Channel	Polarization	Verdict
11ax HE40	5270	Horizontal	PASS

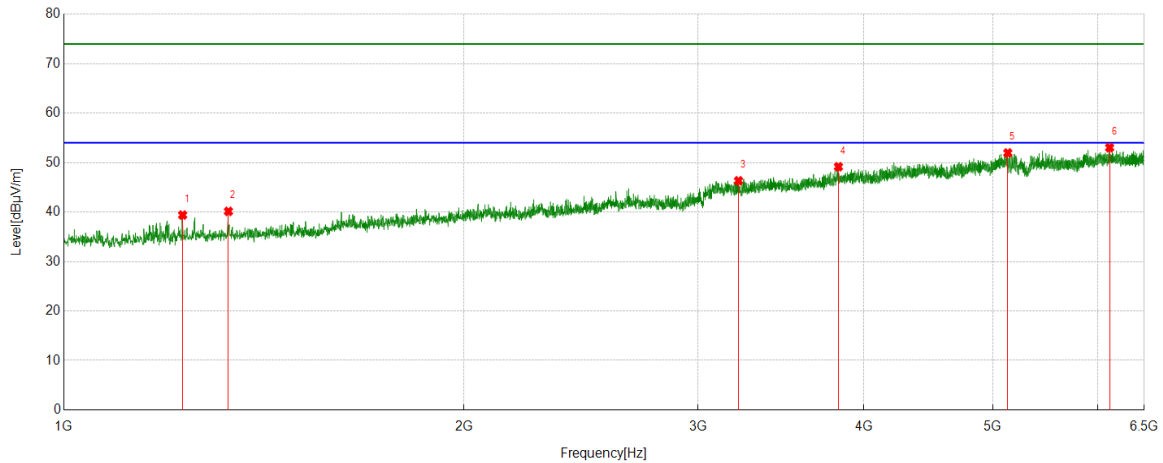


PK Result:

No.	Frequency	Reading Level	Correct Factor	Result	Limit	Margin	Remark
	[MHz]	[dBuV]	[dB/m]	[dBuV/m]	[dBuV/m]	[dB]	
1	1174.1860	42.80	-1.98	40.82	74.00	-33.18	Horizontal
2	1385.6540	40.62	-0.98	39.64	74.00	-34.36	Horizontal
3	3092.6770	36.25	10.01	46.26	74.00	-27.74	Horizontal
4	3817.5353	36.16	12.68	48.84	74.00	-25.16	Horizontal
5	5124.2360	35.58	16.50	52.08	74.00	-21.92	Horizontal
6	5996.9997	35.11	17.73	52.84	74.00	-21.16	Horizontal

- Remark: 1. Measurement = Reading Level + Correct Factor.
2. If Peak Result complies with AV limit, AV Result is deemed to comply with AV limit.
3. Test setup: RBW: 1 MHz, VBW: 3 MHz, Sweep time: auto.
4. Peak: Peak detector.
5. AVG: VBW refer to section 6.2.
6. For below 6.5GHz part, filter losses were only considered in the spurious frequency bands and the authorized band were not corrected for Band Reject Filter losses.
The proper operation of the transmitter prior to adding the filter to the measurement chain.
7. Only the worst case emission was recorded, if it complies with the limit, the other emissions deemed to comply with the limit.

Test Mode	Channel	Polarization	Verdict
11ax HE40	5270	Vertical	PASS

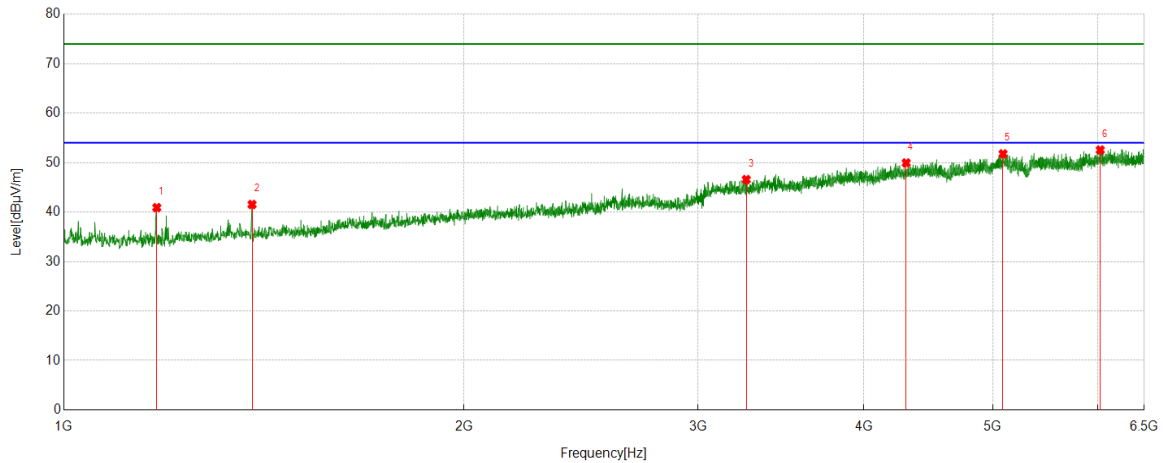


PK Result:

No.	Frequency [MHz]	Reading Level [dBuV]	Correct Factor [dB/m]	Result [dBuV/m]	Limit [dBuV/m]	Margin [dB]	Remark
1	1228.5810	41.05	-1.65	39.40	74.00	-34.60	Vertical
2	1330.0367	41.77	-1.63	40.14	74.00	-33.86	Vertical
3	3218.5798	36.83	9.49	46.32	74.00	-27.68	Vertical
4	3826.7030	36.67	12.49	49.16	74.00	-24.84	Vertical
5	5131.5702	35.49	16.47	51.96	74.00	-22.04	Vertical
6	6121.6802	34.67	18.36	53.03	74.00	-20.97	Vertical

- Remark: 1. Measurement = Reading Level + Correct Factor.
2. If Peak Result complies with AV limit, AV Result is deemed to comply with AV limit.
3. Test setup: RBW: 1 MHz, VBW: 3 MHz, Sweep time: auto.
4. Peak: Peak detector.
5. AVG: VBW refer to section 6.2.
6. For below 6.5GHz part, filter losses were only considered in the spurious frequency bands and the authorized band were not corrected for Band Reject Filter losses.
The proper operation of the transmitter prior to adding the filter to the measurement chain.
7. Only the worst case emission was recorded, if it complies with the limit, the other emissions deemed to comply with the limit.

Test Mode	Channel	Polarization	Verdict
11ax HE40	5310	Horizontal	PASS

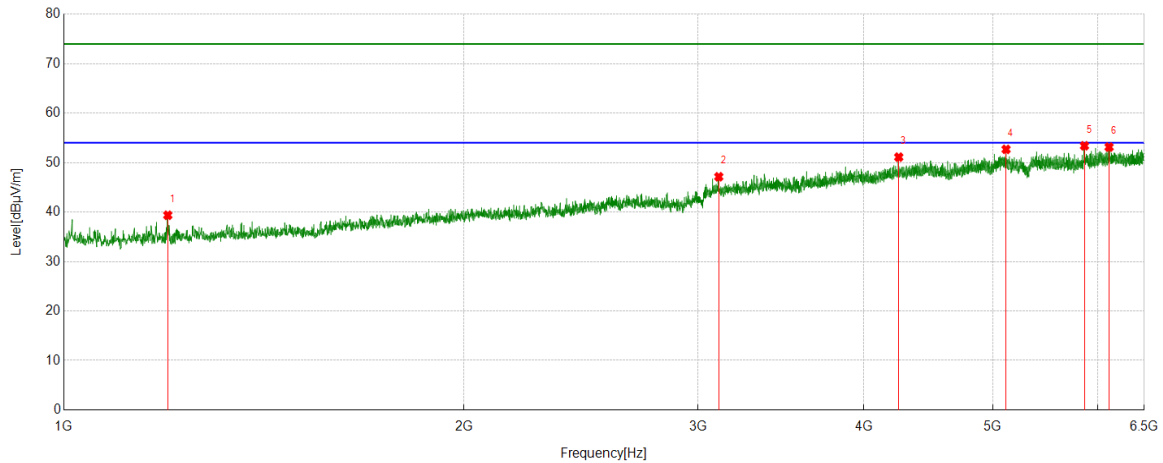


PK Result:

No.	Frequency [MHz]	Reading Level [dBuV]	Correct Factor [dB/m]	Result [dBuV/m]	Limit [dBuV/m]	Margin [dB]	Remark
1	1174.7972	42.88	-1.98	40.90	74.00	-33.10	Horizontal
2	1385.6540	42.51	-0.98	41.53	74.00	-32.47	Horizontal
3	3261.9736	36.93	9.64	46.57	74.00	-27.43	Horizontal
4	4303.4226	36.49	13.45	49.94	74.00	-24.06	Horizontal
5	5089.3988	35.13	16.64	51.77	74.00	-22.23	Horizontal
6	6023.2804	34.95	17.60	52.55	74.00	-21.45	Horizontal

- Remark: 1. Measurement = Reading Level + Correct Factor.
2. If Peak Result complies with AV limit, AV Result is deemed to comply with AV limit.
3. Test setup: RBW: 1 MHz, VBW: 3 MHz, Sweep time: auto.
4. Peak: Peak detector.
5. AVG: VBW refer to section 6.2.
6. For below 6.5GHz part, filter losses were only considered in the spurious frequency bands and the authorized band were not corrected for Band Reject Filter losses.
The proper operation of the transmitter prior to adding the filter to the measurement chain.
7. Only the worst case emission was recorded, if it complies with the limit, the other emissions deemed to comply with the limit.

Test Mode	Channel	Polarization	Verdict
11ax HE40	5310	Vertical	PASS

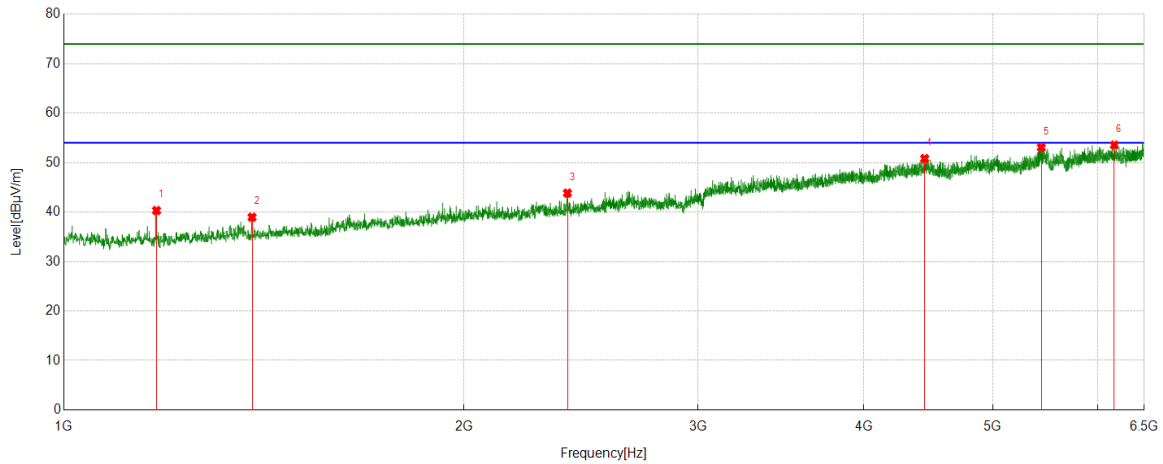


PK Result:

No.	Frequency [MHz]	Reading Level [dBuV]	Correct Factor [dB/m]	Result [dBuV/m]	Limit [dBuV/m]	Margin [dB]	Remark
1	1197.4108	41.46	-2.10	39.36	74.00	-34.64	Vertical
2	3110.4012	36.41	10.73	47.14	74.00	-26.86	Vertical
3	4248.4165	37.23	13.88	51.11	74.00	-22.89	Vertical
4	5116.2907	36.13	16.55	52.68	74.00	-21.32	Vertical
5	5860.7067	36.22	17.18	53.40	74.00	-20.60	Vertical
6	6116.1796	34.76	18.38	53.14	74.00	-20.86	Vertical

- Remark: 1. Measurement = Reading Level + Correct Factor.
2. If Peak Result complies with AV limit, AV Result is deemed to comply with AV limit.
3. Test setup: RBW: 1 MHz, VBW: 3 MHz, Sweep time: auto.
4. Peak: Peak detector.
5. AVG: VBW refer to section 6.2.
6. For below 6.5GHz part, filter losses were only considered in the spurious frequency bands and the authorized band were not corrected for Band Reject Filter losses.
The proper operation of the transmitter prior to adding the filter to the measurement chain.
7. Only the worst case emission was recorded, if it complies with the limit, the other emissions deemed to comply with the limit.

Test Mode	Channel	Polarization	Verdict
11ax HE40	5510	Horizontal	PASS

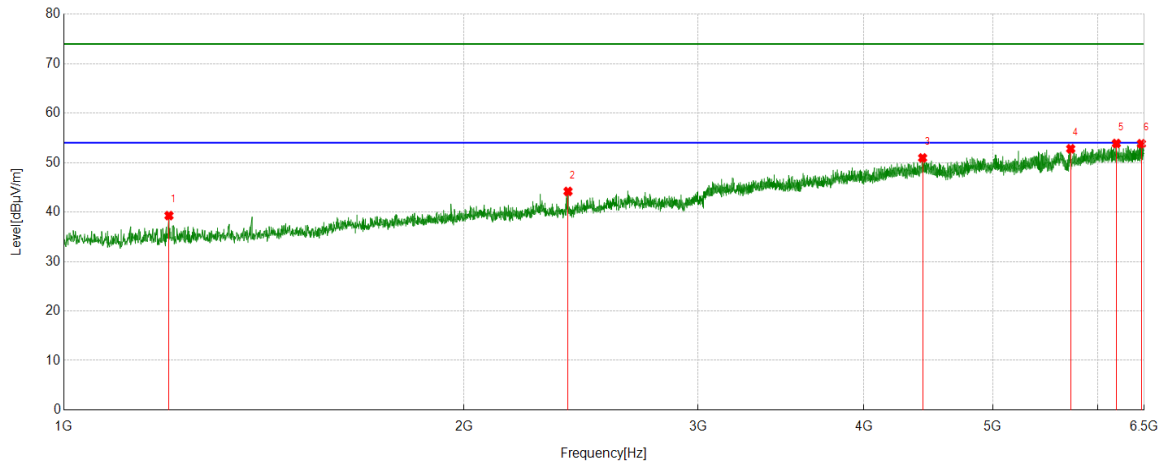


PK Result:

No.	Frequency [MHz]	Reading Level [dBuV]	Correct Factor [dB/m]	Result [dBuV/m]	Limit [dBuV/m]	Margin [dB]	Remark
1	1174.1860	42.20	-1.89	40.31	74.00	-33.69	Horizontal
2	1385.6540	40.12	-1.16	38.96	74.00	-35.04	Horizontal
3	2392.8770	39.49	4.34	43.83	74.00	-30.17	Horizontal
4	4443.3826	36.11	14.70	50.81	74.00	-23.19	Horizontal
5	5438.3820	35.18	17.89	53.07	74.00	-20.93	Horizontal
6	6172.4080	35.17	18.36	53.53	74.00	-20.47	Horizontal

- Remark: 1. Measurement = Reading Level + Correct Factor.
2. If Peak Result complies with AV limit, AV Result is deemed to comply with AV limit.
3. Test setup: RBW: 1 MHz, VBW: 3 MHz, Sweep time: auto.
4. Peak: Peak detector.
5. AVG: VBW refer to section 6.2.
6. For below 6.5GHz part, filter losses were only considered in the spurious frequency bands and the authorized band were not corrected for Band Reject Filter losses.
The proper operation of the transmitter prior to adding the filter to the measurement chain.
7. Only the worst case emission was recorded, if it complies with the limit, the other emissions deemed to comply with the limit.

Test Mode	Channel	Polarization	Verdict
11ax HE40	5510	Vertical	PASS

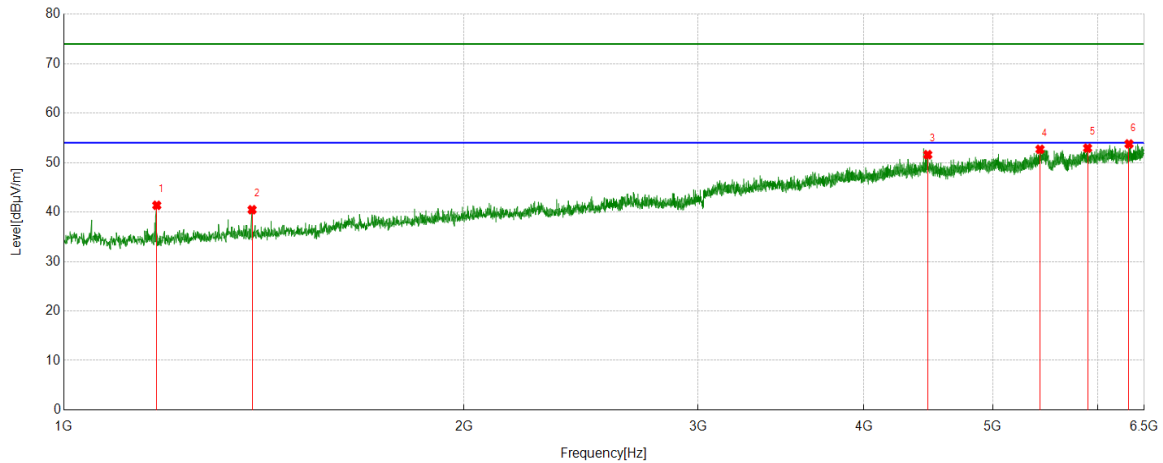


PK Result:

No.	Frequency [MHz]	Reading Level [dBuV]	Correct Factor [dB/m]	Result [dBuV/m]	Limit [dBuV/m]	Margin [dB]	Remark
1	1199.8555	41.19	-1.91	39.28	74.00	-34.72	Vertical
2	2395.3217	39.85	4.33	44.18	74.00	-29.82	Vertical
3	4427.4919	36.57	14.38	50.95	74.00	-23.05	Vertical
4	5722.5803	35.60	17.20	52.80	74.00	-21.20	Vertical
5	6193.7993	35.35	18.52	53.87	74.00	-20.13	Vertical
6	6468.2187	34.08	19.74	53.82	74.00	-20.18	Vertical

- Remark: 1. Measurement = Reading Level + Correct Factor.
2. If Peak Result complies with AV limit, AV Result is deemed to comply with AV limit.
3. Test setup: RBW: 1 MHz, VBW: 3 MHz, Sweep time: auto.
4. Peak: Peak detector.
5. AVG: VBW refer to section 6.2.
6. For below 6.5GHz part, filter losses were only considered in the spurious frequency bands and the authorized band were not corrected for Band Reject Filter losses.
The proper operation of the transmitter prior to adding the filter to the measurement chain.
7. Only the worst case emission was recorded, if it complies with the limit, the other emissions deemed to comply with the limit.

Test Mode	Channel	Polarization	Verdict
11ax HE40	5550	Horizontal	PASS

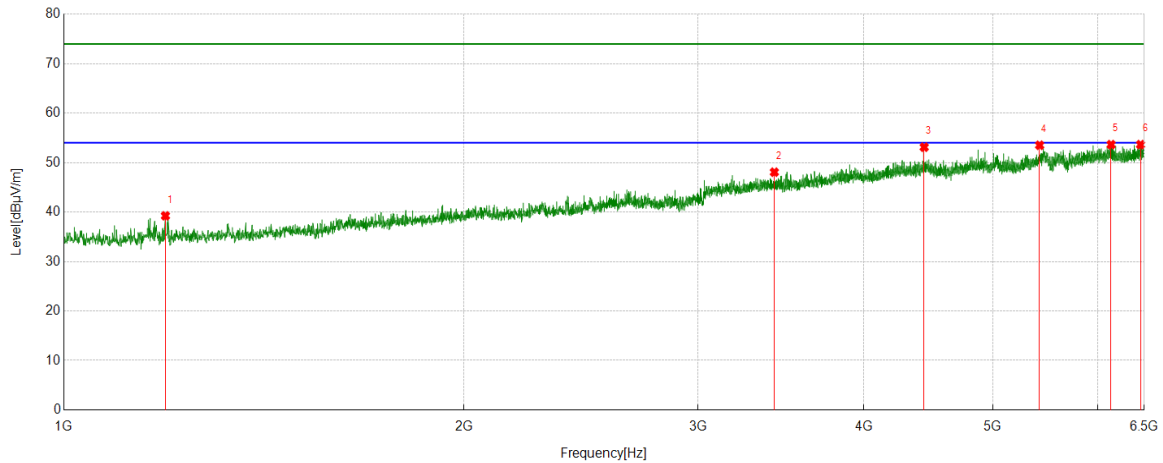


PK Result:

No.	Frequency	Reading Level	Correct Factor	Result	Limit	Margin	Remark
	[MHz]	[dBuV]	[dB/m]	[dBuV/m]	[dBuV/m]	[dB]	
1	1174.7972	43.24	-1.88	41.36	74.00	-32.64	Horizontal
2	1385.6540	41.63	-1.16	40.47	74.00	-33.53	Horizontal
3	4467.2186	36.56	15.04	51.60	74.00	-22.40	Horizontal
4	5426.1585	35.00	17.68	52.68	74.00	-21.32	Horizontal
5	5892.4881	35.17	17.76	52.93	74.00	-21.07	Horizontal
6	6330.7034	35.02	18.75	53.77	74.00	-20.23	Horizontal

- Remark: 1. Measurement = Reading Level + Correct Factor.
2. If Peak Result complies with AV limit, AV Result is deemed to comply with AV limit.
3. Test setup: RBW: 1 MHz, VBW: 3 MHz, Sweep time: auto.
4. Peak: Peak detector.
5. AVG: VBW refer to section 6.2.
6. For below 6.5GHz part, filter losses were only considered in the spurious frequency bands and the authorized band were not corrected for Band Reject Filter losses.
The proper operation of the transmitter prior to adding the filter to the measurement chain.
7. Only the worst case emission was recorded, if it complies with the limit, the other emissions deemed to comply with the limit.

Test Mode	Channel	Polarization	Verdict
11ax HE40	5550	Vertical	PASS

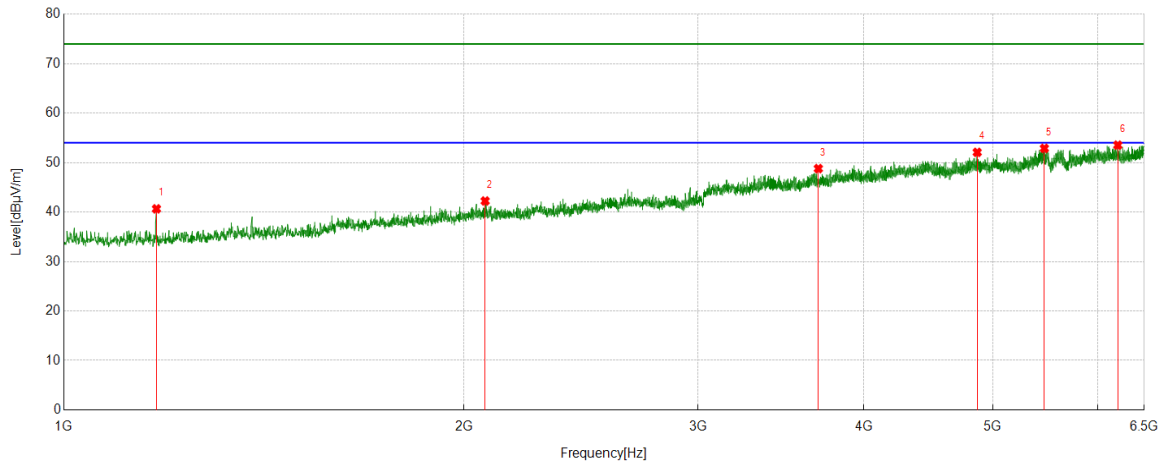


PK Result:

No.	Frequency [MHz]	Reading Level [dBuV]	Correct Factor [dB/m]	Result [dBuV/m]	Limit [dBuV/m]	Margin [dB]	Remark
1	1192.5214	41.22	-1.98	39.24	74.00	-34.76	Vertical
2	3424.5472	37.74	10.33	48.07	74.00	-25.93	Vertical
3	4439.7155	38.60	14.52	53.12	74.00	-20.88	Vertical
4	5422.4914	36.05	17.46	53.51	74.00	-20.49	Vertical
5	6137.5708	35.44	18.20	53.64	74.00	-20.36	Vertical
6	6458.4398	34.03	19.61	53.64	74.00	-20.36	Vertical

- Remark: 1. Measurement = Reading Level + Correct Factor.
2. If Peak Result complies with AV limit, AV Result is deemed to comply with AV limit.
3. Test setup: RBW: 1 MHz, VBW: 3 MHz, Sweep time: auto.
4. Peak: Peak detector.
5. AVG: VBW refer to section 6.2.
6. For below 6.5GHz part, filter losses were only considered in the spurious frequency bands and the authorized band were not corrected for Band Reject Filter losses.
The proper operation of the transmitter prior to adding the filter to the measurement chain.
7. Only the worst case emission was recorded, if it complies with the limit, the other emissions deemed to comply with the limit.

Test Mode	Channel	Polarization	Verdict
11ax HE40	5670	Horizontal	PASS

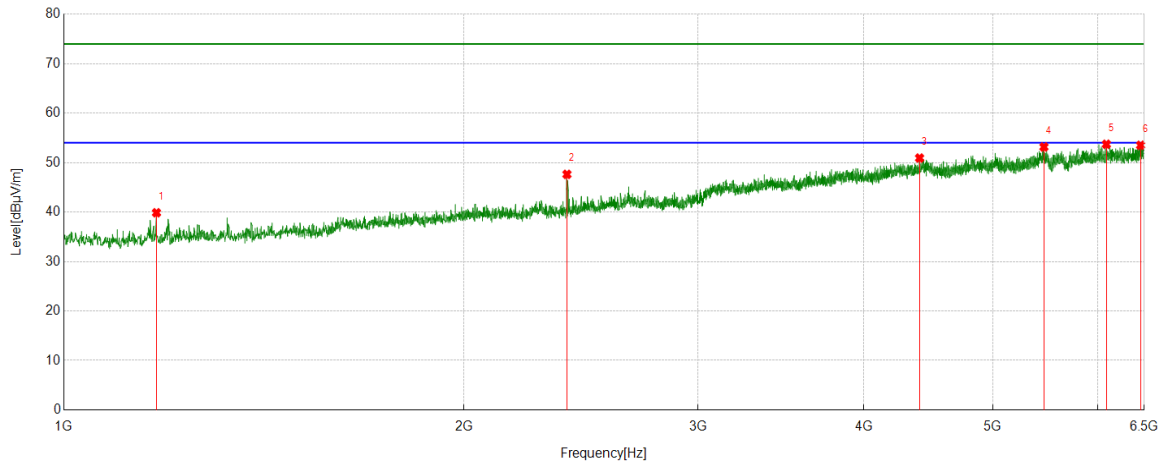


PK Result:

No.	Frequency [MHz]	Reading Level [dBuV]	Correct Factor [dB/m]	Result [dBuV/m]	Limit [dBuV/m]	Margin [dB]	Remark
1	1174.1860	42.54	-1.89	40.65	74.00	-33.35	Horizontal
2	2075.0639	38.30	3.94	42.24	74.00	-31.76	Horizontal
3	3695.9107	36.69	12.10	48.79	74.00	-25.21	Horizontal
4	4866.9297	36.81	15.27	52.08	74.00	-21.92	Horizontal
5	5467.1075	35.02	17.86	52.88	74.00	-21.12	Horizontal
6	6209.0788	35.03	18.50	53.53	74.00	-20.47	Horizontal

- Remark: 1. Measurement = Reading Level + Correct Factor.
2. If Peak Result complies with AV limit, AV Result is deemed to comply with AV limit.
3. Test setup: RBW: 1 MHz, VBW: 3 MHz, Sweep time: auto.
4. Peak: Peak detector.
5. AVG: VBW refer to section 6.2.
6. For below 6.5GHz part, filter losses were only considered in the spurious frequency bands and the authorized band were not corrected for Band Reject Filter losses.
The proper operation of the transmitter prior to adding the filter to the measurement chain.
7. Only the worst case emission was recorded, if it complies with the limit, the other emissions deemed to comply with the limit.

Test Mode	Channel	Polarization	Verdict
11ax HE40	5670	Vertical	PASS

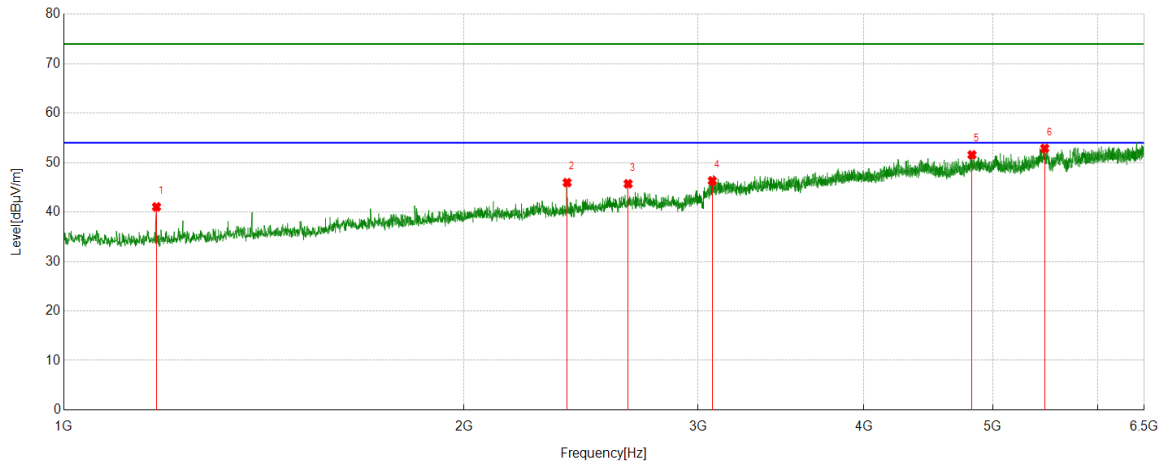


PK Result:

No.	Frequency [MHz]	Reading Level [dBuV]	Correct Factor [dB/m]	Result [dBuV/m]	Limit [dBuV/m]	Margin [dB]	Remark
1	1174.1860	41.75	-1.89	39.86	74.00	-34.14	Vertical
2	2391.0434	43.27	4.36	47.63	74.00	-26.37	Vertical
3	4404.2671	36.81	14.11	50.92	74.00	-23.08	Vertical
4	5463.4404	35.29	17.87	53.16	74.00	-20.84	Vertical
5	6087.4542	35.49	18.22	53.71	74.00	-20.29	Vertical
6	6459.0510	33.89	19.61	53.50	74.00	-20.50	Vertical

- Remark: 1. Measurement = Reading Level + Correct Factor.
2. If Peak Result complies with AV limit, AV Result is deemed to comply with AV limit.
3. Test setup: RBW: 1 MHz, VBW: 3 MHz, Sweep time: auto.
4. Peak: Peak detector.
5. AVG: VBW refer to section 6.2.
6. For below 6.5GHz part, filter losses were only considered in the spurious frequency bands and the authorized band were not corrected for Band Reject Filter losses.
The proper operation of the transmitter prior to adding the filter to the measurement chain.
7. Only the worst case emission was recorded, if it complies with the limit, the other emissions deemed to comply with the limit.

Test Mode	Channel	Polarization	Verdict
11ax HE40	5710	Horizontal	PASS

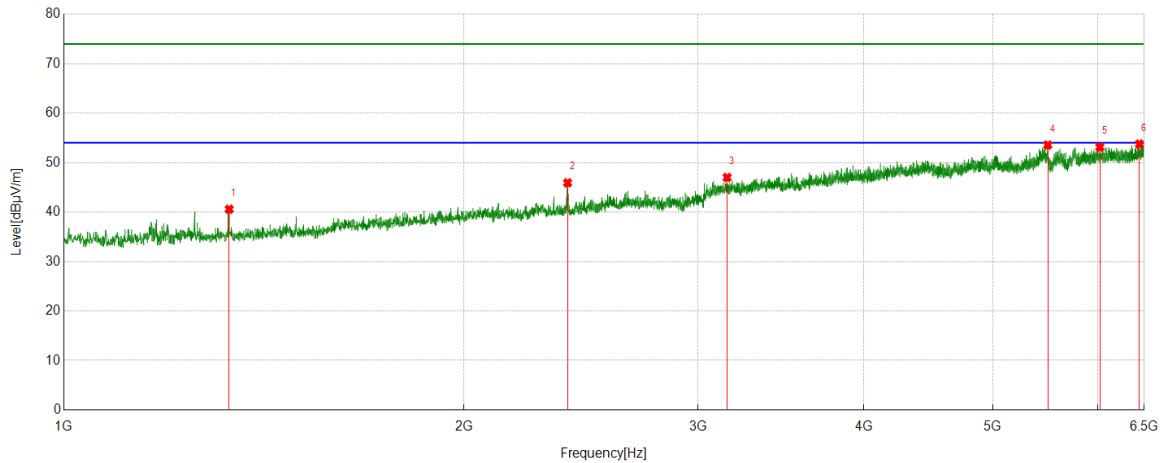


PK Result:

No.	Frequency [MHz]	Reading Level [dBuV]	Correct Factor [dB/m]	Result [dBuV/m]	Limit [dBuV/m]	Margin [dB]	Remark
1	1174.1860	42.94	-1.89	41.05	74.00	-32.95	Horizontal
2	2391.6546	41.60	4.36	45.96	74.00	-28.04	Horizontal
3	2658.1287	38.50	7.21	45.71	74.00	-28.29	Horizontal
4	3075.5640	36.73	9.59	46.32	74.00	-27.68	Horizontal
5	4822.9248	36.22	15.35	51.57	74.00	-22.43	Horizontal
6	5470.1634	35.02	17.86	52.88	74.00	-21.12	Horizontal

- Remark: 1. Measurement = Reading Level + Correct Factor.
2. If Peak Result complies with AV limit, AV Result is deemed to comply with AV limit.
3. Test setup: RBW: 1 MHz, VBW: 3 MHz, Sweep time: auto.
4. Peak: Peak detector.
5. AVG: VBW refer to section 6.2.
6. For below 6.5GHz part, filter losses were only considered in the spurious frequency bands and the authorized band were not corrected for Band Reject Filter losses.
The proper operation of the transmitter prior to adding the filter to the measurement chain.
7. Only the worst case emission was recorded, if it complies with the limit, the other emissions deemed to comply with the limit.

Test Mode	Channel	Polarization	Verdict
11ax HE40	5710	Vertical	PASS

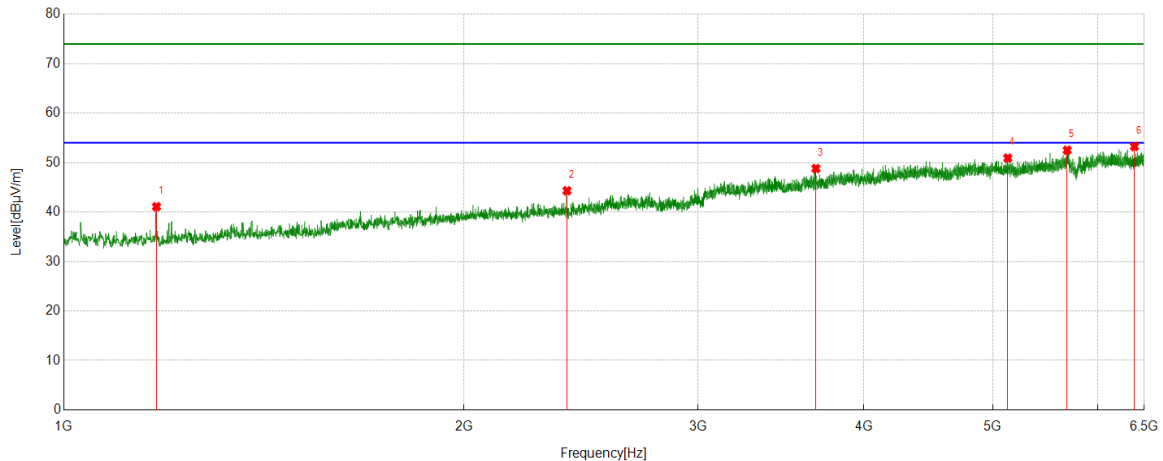


PK Result:

No.	Frequency [MHz]	Reading Level [dBuV]	Correct Factor [dB/m]	Result [dBuV/m]	Limit [dBuV/m]	Margin [dB]	Remark
1	1331.8702	42.12	-1.54	40.58	74.00	-33.42	Vertical
2	2393.4882	41.58	4.34	45.92	74.00	-28.08	Vertical
3	3155.6284	37.32	9.68	47.00	74.00	-27.00	Vertical
4	5499.4999	35.74	17.82	53.56	74.00	-20.44	Vertical
5	6019.0021	35.41	17.71	53.12	74.00	-20.88	Vertical
6	6446.8274	34.29	19.47	53.76	74.00	-20.24	Vertical

- Remark: 1. Measurement = Reading Level + Correct Factor.
2. If Peak Result complies with AV limit, AV Result is deemed to comply with AV limit.
3. Test setup: RBW: 1 MHz, VBW: 3 MHz, Sweep time: auto.
4. Peak: Peak detector.
5. AVG: VBW refer to section 6.2.
6. For below 6.5GHz part, filter losses were only considered in the spurious frequency bands and the authorized band were not corrected for Band Reject Filter losses.
The proper operation of the transmitter prior to adding the filter to the measurement chain.
7. Only the worst case emission was recorded, if it complies with the limit, the other emissions deemed to comply with the limit.

Test Mode	Channel	Polarization	Verdict
11ax HE40	5755	Horizontal	PASS

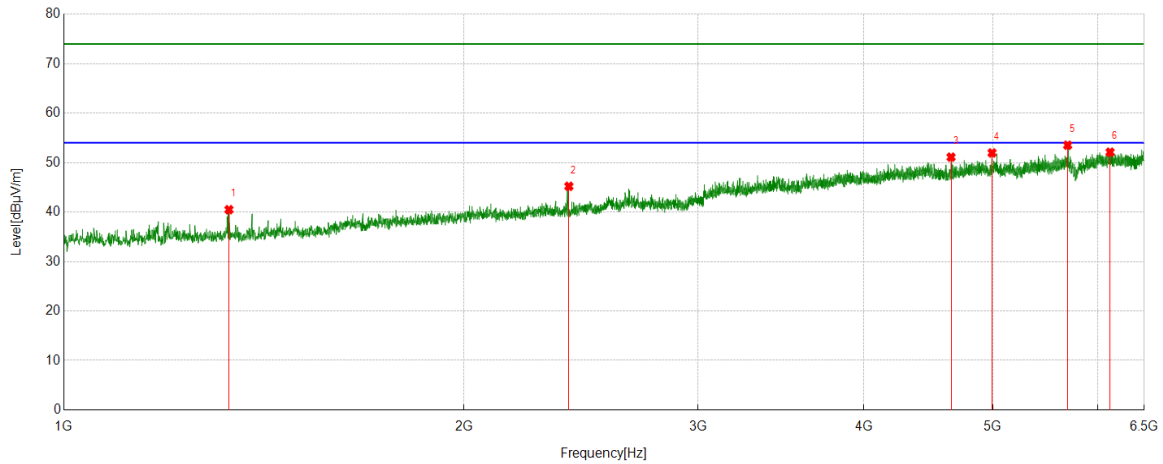


PK Result:

No.	Frequency [MHz]	Reading Level [dBuV]	Correct Factor [dB/m]	Result [dBuV/m]	Limit [dBuV/m]	Margin [dB]	Remark
1	1174.1860	43.06	-1.97	41.09	74.00	-32.91	Horizontal
2	2391.0434	40.14	4.17	44.31	74.00	-29.69	Horizontal
3	3680.6312	36.07	12.72	48.79	74.00	-25.21	Horizontal
4	5131.5702	35.89	15.02	50.91	74.00	-23.09	Horizontal
5	5687.7431	35.90	16.61	52.51	74.00	-21.49	Horizontal
6	6391.2101	35.10	18.15	53.25	74.00	-20.75	Horizontal

- Remark: 1. Measurement = Reading Level + Correct Factor.
2. If Peak Result complies with AV limit, AV Result is deemed to comply with AV limit.
3. Test setup: RBW: 1 MHz, VBW: 3 MHz, Sweep time: auto.
4. Peak: Peak detector.
5. AVG: VBW refer to section 6.2.
6. For below 6.5GHz part, filter losses were only considered in the spurious frequency bands and the authorized band were not corrected for Band Reject Filter losses.
The proper operation of the transmitter prior to adding the filter to the measurement chain.
7. Only the worst case emission was recorded, if it complies with the limit, the other emissions deemed to comply with the limit.

Test Mode	Channel	Polarization	Verdict
11ax HE40	5755	Vertical	PASS

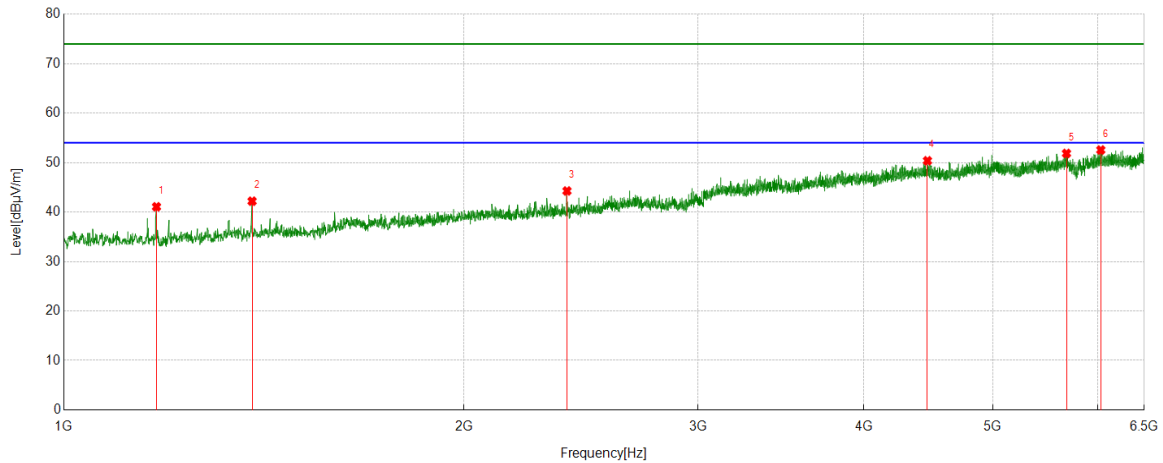


PK Result:

No.	Frequency	Reading Level	Correct Factor	Result	Limit	Margin	Remark
	[MHz]	[dBuV]	[dB/m]	[dBuV/m]	[dBuV/m]	[dB]	
1	1331.2590	41.94	-1.45	40.49	74.00	-33.51	Vertical
2	2398.9888	40.66	4.55	45.21	74.00	-28.79	Vertical
3	4651.1835	37.39	13.72	51.11	74.00	-22.89	Vertical
4	4994.0549	37.03	14.93	51.96	74.00	-22.04	Vertical
5	5692.6325	36.94	16.58	53.52	74.00	-20.48	Vertical
6	6126.5696	34.40	17.71	52.11	74.00	-21.89	Vertical

- Remark: 1. Measurement = Reading Level + Correct Factor.
2. If Peak Result complies with AV limit, AV Result is deemed to comply with AV limit.
3. Test setup: RBW: 1 MHz, VBW: 3 MHz, Sweep time: auto.
4. Peak: Peak detector.
5. AVG: VBW refer to section 6.2.
6. For below 6.5GHz part, filter losses were only considered in the spurious frequency bands and the authorized band were not corrected for Band Reject Filter losses.
The proper operation of the transmitter prior to adding the filter to the measurement chain.
7. Only the worst case emission was recorded, if it complies with the limit, the other emissions deemed to comply with the limit.

Test Mode	Channel	Polarization	Verdict
11ax HE40	5795	Horizontal	PASS

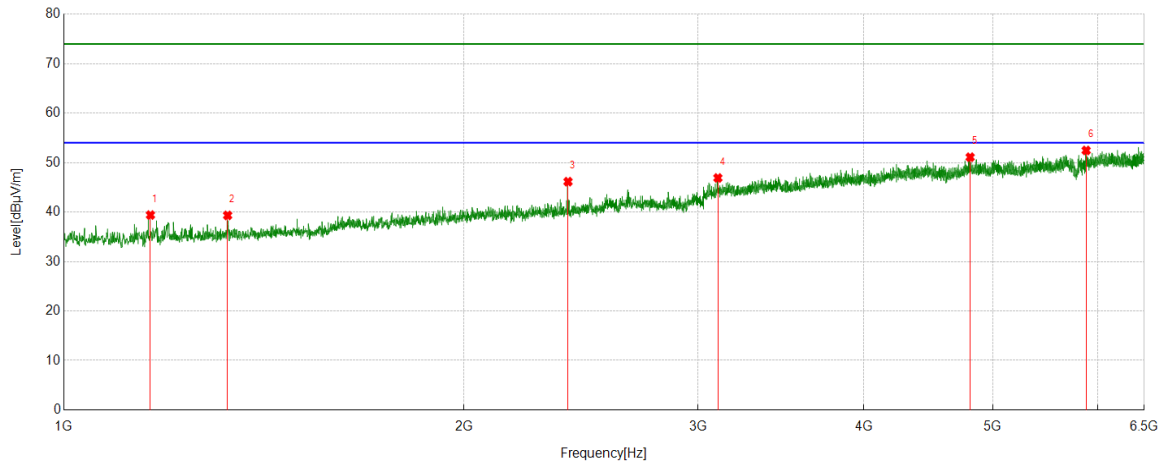


PK Result:

No.	Frequency [MHz]	Reading Level [dBuV]	Correct Factor [dB/m]	Result [dBuV/m]	Limit [dBuV/m]	Margin [dB]	Remark
1	1174.1860	43.04	-1.97	41.07	74.00	-32.93	Horizontal
2	1385.6540	43.44	-1.24	42.20	74.00	-31.80	Horizontal
3	2391.0434	40.10	4.17	44.27	74.00	-29.73	Horizontal
4	4464.7739	35.99	14.39	50.38	74.00	-23.62	Horizontal
5	5681.0201	35.22	16.64	51.86	74.00	-22.14	Horizontal
6	6028.7810	34.85	17.70	52.55	74.00	-21.45	Horizontal

- Remark: 1. Measurement = Reading Level + Correct Factor.
2. If Peak Result complies with AV limit, AV Result is deemed to comply with AV limit.
3. Test setup: RBW: 1 MHz, VBW: 3 MHz, Sweep time: auto.
4. Peak: Peak detector.
5. AVG: VBW refer to section 6.2.
6. For below 6.5GHz part, filter losses were only considered in the spurious frequency bands and the authorized band were not corrected for Band Reject Filter losses.
The proper operation of the transmitter prior to adding the filter to the measurement chain.
7. Only the worst case emission was recorded, if it complies with the limit, the other emissions deemed to comply with the limit.

Test Mode	Channel	Polarization	Verdict
11ax HE40	5795	Vertical	PASS



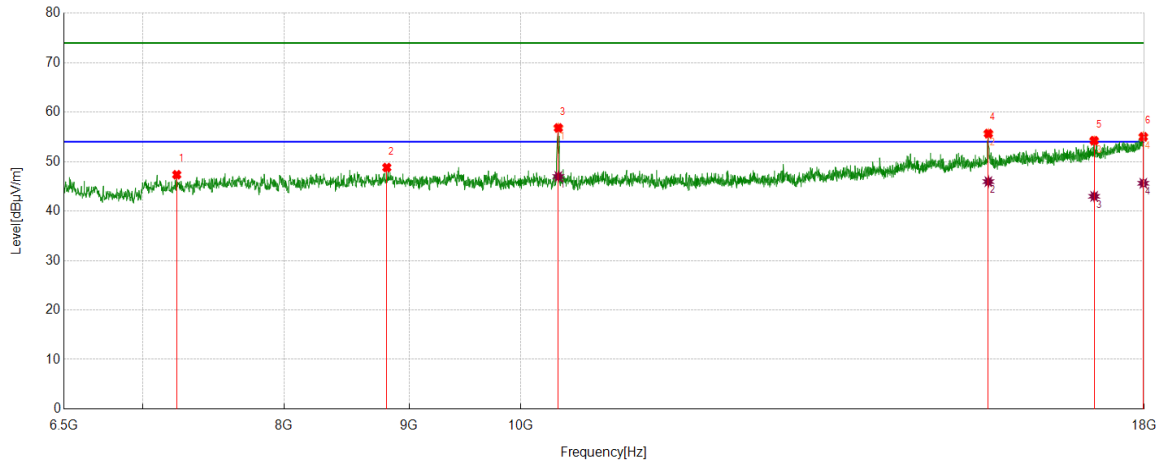
PK Result:

No.	Frequency [MHz]	Reading Level [dBuV]	Correct Factor [dB/m]	Result [dBuV/m]	Limit [dBuV/m]	Margin [dB]	Remark
1	1161.9624	41.55	-2.15	39.40	74.00	-34.60	Vertical
2	1328.2031	40.77	-1.44	39.33	74.00	-34.67	Vertical
3	2395.3217	41.77	4.38	46.15	74.00	-27.85	Vertical
4	3105.5117	37.31	9.59	46.90	74.00	-27.10	Vertical
5	4807.6453	36.06	15.04	51.10	74.00	-22.90	Vertical
6	5877.8198	35.44	17.02	52.46	74.00	-21.54	Vertical

- Remark: 1. Measurement = Reading Level + Correct Factor.
2. If Peak Result complies with AV limit, AV Result is deemed to comply with AV limit.
3. Test setup: RBW: 1 MHz, VBW: 3 MHz, Sweep time: auto.
4. Peak: Peak detector.
5. AVG: VBW refer to section 6.2.
6. For below 6.5GHz part, filter losses were only considered in the spurious frequency bands and the authorized band were not corrected for Band Reject Filter losses.
The proper operation of the transmitter prior to adding the filter to the measurement chain.
7. Only the worst case emission was recorded, if it complies with the limit, the other emissions deemed to comply with the limit.

PART 2: For 6.5GHz to 18GHz:

Test Mode	Channel	Polarization	Verdict
11a	5180	Horizontal	PASS


PK Result:

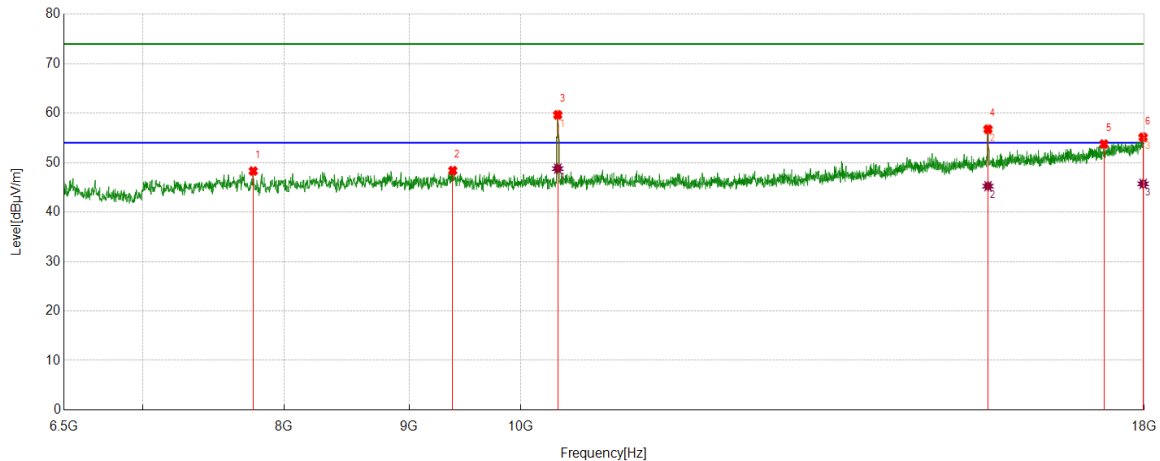
No.	Frequency [MHz]	Reading Level [dBuV]	Correct Factor [dB/m]	Result [dBuV/m]	Limit [dBuV/m]	Margin [dB]	Remark
1	7230.3717	43.44	3.91	47.35	74.00	-26.65	Horizontal
2	8813.8023	42.52	6.28	48.80	74.00	-25.20	Horizontal
3	10360.8101	50.11	6.70	56.81	74.00	-17.19	Horizontal
4	15540.5068	41.85	13.82	55.67	74.00	-18.33	Horizontal
5	17169.9450	37.78	16.46	54.24	74.00	-19.76	Horizontal
6	17984.6641	35.22	19.80	55.02	74.00	-18.98	Horizontal

AV Result:

No.	Frequency [MHz]	Reading Level [dBuV]	Correct Factor [dB/m]	Result [dBuV/m]	Limit [dBuV/m]	Margin [dB]	Remark
1	10360.8101	40.29	6.70	46.99	54.00	-7.01	Horizontal
2	15540.5068	32.14	13.82	45.96	54.00	-8.04	Horizontal
3	17169.9450	26.52	16.46	42.98	54.00	-11.02	Horizontal
4	17984.6641	25.82	19.80	45.62	54.00	-8.38	Horizontal

- Remark: 1. Measurement = Reading Level + Correct Factor.
2. If Peak Result complies with AV limit, AV Result is deemed to comply with AV limit.
3. Test setup: RBW: 1 MHz, VBW: 3 MHz, Sweep time: auto.
4. Peak: Peak detector.
5. AVG: VBW refer to section 6.2.
6. For above 6.5GHz part, filter losses were only considered in the spurious frequency bands and the authorized band were not corrected for HPF losses. The proper operation of the transmitter prior to adding the filter to the measurement chain.
7. Only the worst case emission was recorded, if it complies with the limit, the other emissions deemed to comply with the limit.

Test Mode	Channel	Polarization	Verdict
11a	5180	Vertical	PASS



PK Result:

No.	Frequency	Reading Level	Correct Factor	Result	Limit	Margin	Remark
	[MHz]	[dBuV]	[dB/m]	[dBuV/m]	[dBuV/m]	[dB]	
1	7770.9618	43.38	4.92	48.30	74.00	-25.70	Vertical
2	9379.3132	41.93	6.46	48.39	74.00	-25.61	Vertical
3	10355.0592	52.94	6.71	59.65	74.00	-14.35	Vertical
4	15534.7558	42.97	13.79	56.76	74.00	-17.24	Vertical
5	17329.0548	36.66	17.10	53.76	74.00	-20.24	Vertical
6	17980.8301	35.32	19.81	55.13	74.00	-18.87	Vertical

AV Result:

No.	Frequency	Reading Level	Correct Factor	Result	Limit	Margin	Remark
	[MHz]	[dBuV]	[dB/m]	[dBuV/m]	[dBuV/m]	[dB]	
1	10355.0592	42.08	6.71	48.79	54.00	-5.21	Vertical
2	15534.7558	31.45	13.79	45.24	54.00	-8.76	Vertical
3	17980.8301	25.90	19.81	45.71	54.00	-8.29	Vertical

Remark: 1. Measurement = Reading Level + Correct Factor.

2. If Peak Result complies with AV limit, AV Result is deemed to comply with AV limit.

3. Test setup: RBW: 1 MHz, VBW: 3 MHz, Sweep time: auto.

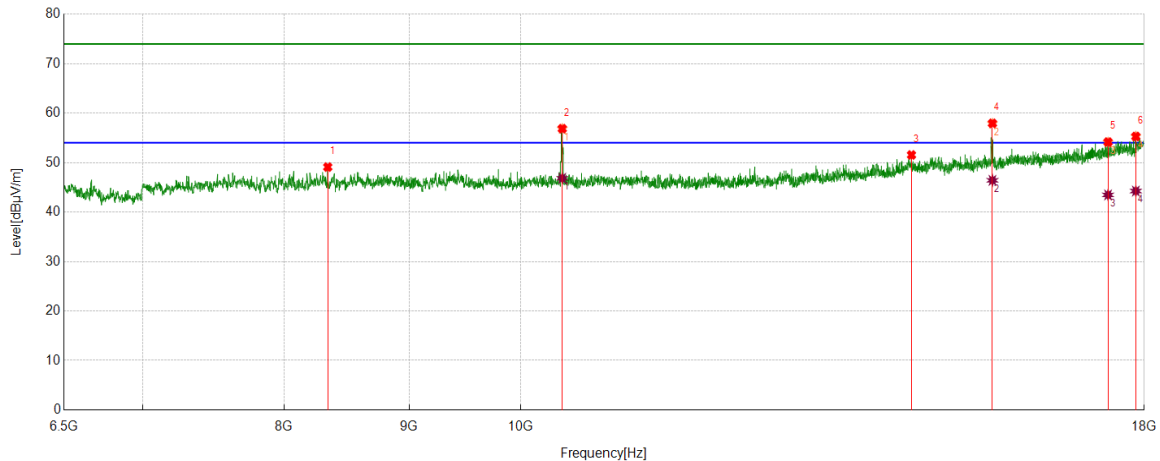
4. Peak: Peak detector.

5. AVG: VBW refer to section 6.2.

6. For above 6.5GHz part, filter losses were only considered in the spurious frequency bands and the authorized band were not corrected for HPF losses. The proper operation of the transmitter prior to adding the filter to the measurement chain.

7. Only the worst case emission was recorded, if it complies with the limit, the other emissions deemed to comply with the limit.

Test Mode	Channel	Polarization	Verdict
11a	5200	Horizontal	PASS



PK Result:

No.	Frequency	Reading Level	Correct Factor	Result	Limit	Margin	Remark
	[MHz]	[dBuV]	[dB/m]	[dBuV/m]	[dBuV/m]	[dB]	
1	8336.4727	43.15	5.95	49.10	74.00	-24.90	Horizontal
2	10399.1499	50.14	6.72	56.86	74.00	-17.14	Horizontal
3	14453.5756	38.66	12.89	51.55	74.00	-22.45	Horizontal
4	15599.9333	44.26	13.68	57.94	74.00	-16.06	Horizontal
5	17396.1494	36.82	17.34	54.16	74.00	-19.84	Horizontal
6	17858.1430	36.05	19.24	55.29	74.00	-18.71	Horizontal

AV Result:

No.	Frequency	Reading Level	Correct Factor	Result	Limit	Margin	Remark
	[MHz]	[dBuV]	[dB/m]	[dBuV/m]	[dBuV/m]	[dB]	
1	10399.1499	40.12	6.72	46.84	54.00	-7.16	Horizontal
2	15599.9333	32.74	13.68	46.42	54.00	-7.58	Horizontal
3	17396.1494	26.13	17.34	43.47	54.00	-10.53	Horizontal
4	17858.1430	25.01	19.24	44.25	54.00	-9.75	Horizontal

Remark: 1. Measurement = Reading Level + Correct Factor.

2. If Peak Result complies with AV limit, AV Result is deemed to comply with AV limit.

3. Test setup: RBW: 1 MHz, VBW: 3 MHz, Sweep time: auto.

4. Peak: Peak detector.

5. AVG: VBW refer to section 6.2.

6. For above 6.5GHz part, filter losses were only considered in the spurious frequency bands and the authorized band were not corrected for HPF losses. The proper operation of the transmitter prior to adding the filter to the measurement chain.

7. Only the worst case emission was recorded, if it complies with the limit, the other emissions deemed to comply with the limit.