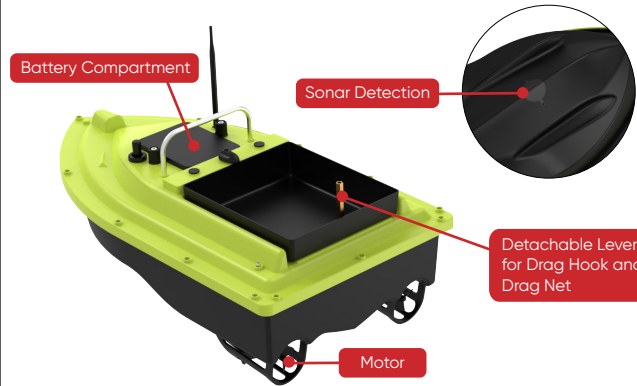
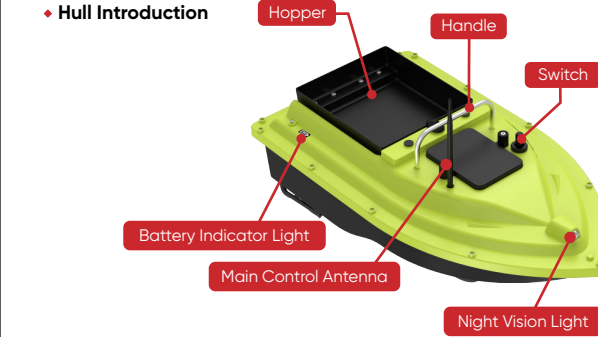


Intelligent Remote-Controlled Bait Boat

User Manual

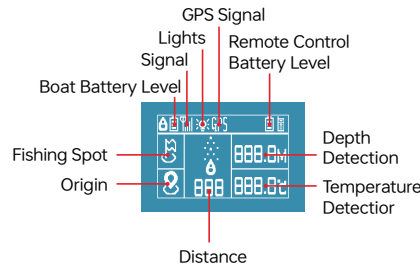
Fish Joy Life, Created by Our Intelligence

◆ Hull Introduction



Fish Joy Life, Created by Our Intelligence

◆ Remote Control Button Function Description



Function	Button	Set up	Precautions
Power on /off	Long press the power button	1. Remote control power on: long press the power button to turn on, long press the power button again to turn off, 2. Charge the ship's battery firstReuse of electricity.	1. The remote control battery cannot be installed upside down. 2. Charge the ship's battery firstReuse of electricity.
GPS	GPS	When this icon appears on the display, it indicates that the GPS signal has been found. It usually appears about 30 seconds after powering on.	The origin setting can only be used when the GPS icon appears.
Origin Setting	Long press	After searching for GPS signals, long press the key to set the shore origin. The origin is set to allow the ship to automatically return after losing connection or low battery.	Before each use or when changing the use environment, you must set the origin on the shore. If you do not set the origin, the remote control will keep beeping and will not automatically return..
Return to origin	Short press	Press the key, the ship will automatically return to the origin, and the arrow will appear on the display.	The origin must be set before the origin return function can be used.
Fishing spot setting	Long press	When there is a GPS signal, press and hold the button to set the target point. After the setting is successful, the remote control will beep to prompt.	The fishing spot can only be located when there is a GPS signal
Navigation fishing spot	Short press	After setting the fishing spot, click and the boat will automatically go to the set fishing spot.	The error range of GPS automatic driving to the fishing spot is about 3 meters

Boat Light Control		Press key once: on-flash-off, 3 modes switching.	If it is successfully turned on, the remote control will beep once.
Cabin control		Press the button to open the silo tipping bucket.	The remote control will beep once when the silo is opened.
Cruise control	Directional joystick up	Push the joystick up and hold it for 3 seconds. The remote control will make a sound and enter cruise control. Push the joystick back to cancel.	When cruising, move the joystick left or right to change the direction of the boat.
Exit current state	Joystick down	Shake the rod and push it down to cancel all current operations.	Exit the current operation and start a new job
Clearing the origin and positioning points	M	Long press the M for more than 3 seconds to clear the origin and fishing point, and then reset the fishing point	When the distance display changes to 0, it proves that the positioning point has been successfully cleared
Boat and remote control pairing	M +	Long press the M key,then press the to turn on thedevice and enter thepairing mode. Then turnon the boat switch andthe pairing will besuccessfulafter2seconds.	If you find that you cannot control the boat during use, you can add the code according to the instructions.
Low battery lost connection		When the boat and the remote controller reach the bottom (it is expected to run for about 10 minutes, 30 seconds later), the boat will automatically return to the origin and will not stop until it returns to the origin.	The premise is that the setting is the origin
Lost connection weak signal		When the boat detects a weak signal and loses control (about 30 seconds), it will automatically return to the origin and will not stop until it returns to the origin.	The premise is that the setting is the origin

Description of water depth/Water Temperature detection:

The water depth/water temperature detection does not require any Settings. It can be displayed after the machine is turned on and the water is launched. (The water depth is not displayed when the ship is on the shore.)

Water depth detection requirements: Accurate detection can only be achieved when the water depth reaches 1 meter or more. The detection depth is 1 to 32 meters (approximately plus or minus 1 meter). Detection temperature: 0-50°C

Depth-temperature display unit switching:

Long press Press the key once to switch the depth display unit, press it for the second time to switch the temperature display unit, and repeat this cycle.

Fish Joy Life, Created by Our Intelligence

Streamlined Hull

- ◆ Smoother Navigation
- ◆ Stronger Wind and Wave Resistance



Battery Use and Charging Instructions:

- ◆ Main Battery (Standard)
- ◆ Power Port Connection with
- ◆ Battery Charger Connection



FCC Warning

This device complies with Part 15 of the FCC Rules. Operation is subject to the following two conditions:

(1) This device may not cause harmful interference, and (2) this device must accept any interference received, including interference that may cause undesired operation.

NOTE 1: This equipment has been tested and found to comply with the limits for a Class B digital device, pursuant to part 15 of the FCC Rules. These limits are designed to provide reasonable protection against harmful interference in a residential installation. This equipment generates, uses and can radiate radio frequency energy and, if not installed and used in accordance with the instructions, may cause harmful interference to radio communications. However, there is no guarantee that interference will not occur in a particular installation. If this equipment does cause harmful interference to radio or television reception, which can be determined by turning the equipment off and on, the user is encouraged to try to correct the interference by one or more of the following measures:

- Reorient or relocate the receiving antenna.
- Increase the separation between the equipment and receiver.
- Connect the equipment into an outlet on a circuit different from that to which the receiver is connected.
- Consult the dealer or an experienced radio/TV technician for help.

NOTE 2: Any changes or modifications to this unit not expressly approved by the party responsible for compliance could void the user's authority to operate the equipment.

The device has been evaluated to meet general RF exposure requirement. The device can be used in portable exposure condition without restriction.