



## Quick Start Guide

V1.0

# ACE | Thermal Imaging Scope

ACE L35 / ACE H50 / ACE H50R / ACE S60R



**EN**

**Please read this manual before using the product, and keep the guide for future reference.**

For detailed information about the device, please download the complete user manual from the official website ([www.nocpix.com](http://www.nocpix.com)).

**DE**

**Bitte lesen Sie dieses Handbuch sorgfältig durch, bevor Sie dieses Produkt verwenden, und bewahren Sie es zum späteren Nachschlagen gut auf.**

Ausführliche Informationen über das Gerät finden Sie im vollständigen Benutzerhandbuch, das Sie von der offiziellen Website ([www.nocpix.com](http://www.nocpix.com)) herunterladen können.

**IT**

**Si prega di leggere questa guida prima di utilizzare il prodotto e conservarla per riferimento futuro.**

Per informazioni dettagliate sul dispositivo, si prega di scaricare il manuale d'uso completo dal sito ufficiale ([www.nocpix.com](http://www.nocpix.com)).

**FR**

**Veuillez consulter ce guide avant d'utiliser le produit et gardez-le pour vous y référer ultérieurement.**

Pour plus d'informations sur l'appareil, veuillez télécharger le manuel d'utilisation complet sur le site officiel ([www.nocpix.com](http://www.nocpix.com)).

**ES**

**Lea este manual antes de usar el producto y conserve la guía para referencia futura.**

Para obtener información detallada sobre el dispositivo, descargue el manual de usuario completo del sitio web oficial ([www.nocpix.com](http://www.nocpix.com)).

# **| Important Safety Information**

## **Environmental influences**

Never point the lens of the device directly at intense heat sources such as the sun or laser equipment. The objective lens and eyepiece can function as a burning glass and damage the interior components.

## **Risk of swallowing**

Do not place this device in the hands of small children. Incorrect handling can cause small parts to come loose which may be swallowed.

## **Safety instructions for use**

- Handle the device with care: rough handling may damage the battery.
- Do not expose the device to fire or high temperatures.
- Install the batteries correctly according to the instruction on the device. Reverse connection is prohibited.
- The battery capacity decreases when operated in a cold ambient temperature. This is not a fault and occurs for technical reasons.
- Always store the device in a dry, well-ventilated space. For prolonged storage, remove the batteries.
- The recommended temperature for using this product is -20 ° to +50°. Otherwise, it will affect the service life of the product.
- Do not store the device for long periods at temperatures below 20°C or above 50°C, or this will permanently reduce the capacity of the battery.
- If the device has been damaged or the battery is defective, send the device to our after-sales service for repair.

## **EU Compliance Statement**

Wireless transmitter module frequency range:

WLAN: 2.412-2.472GHz (For EU)

Wireless transmitter module power < 20dBm (only for EU)



We, Inlumen Technologies Co., Ltd. hereby declares that the radio equipment types SLIM are in compliance with the Directives 2014/53/EU and 2011/65/EU.

### **Disposal of batteries**



2023/1542 (Battery Regulation): This product contains a battery that cannot be disposed of as unsorted municipal waste in the European Union. For battery details, refer to the documentation of the specific product. The battery is marked with this symbol, which may include Cd (indicating cadmium), Pb (indicating lead), or Hg (indicating mercury). For proper recycling, please return the battery to your supplier or send it to a designated collection point. For more information, visit [www.recyclethis.info](http://www.recyclethis.info).

### **User information on the disposal of electrical and electronic devices (private households)**



2012/19/EU (WEEE directive): Products marked with this symbol cannot be disposed of as unsorted municipal waste in the European Union. For proper recycling, return this product to your local supplier upon the purchase of equivalent new equipment, or dispose of it at designated collection points. For more information see: [www.recyclethis.info](http://www.recyclethis.info).

### **For business customers within the European Union**

Please contact your dealer or supplier regarding the disposal of electrical and electronic devices. He will provide you with further information.

### **Information on disposal in other countries outside of the European Union**

This symbol is only applicable in the European Union. Please contact your local authority or dealer if you wish to dispose of this product and ask for a disposal option.

**Intended use**

The device is intended for displaying heat signatures during nature observation, remote hunting observations and for civil use. This device is not a toy for children.

Use the device only as described in this operating manual. The manufacturer and the dealer accept no liability for damages which arise due to non-intended or incorrect use.

**Function test**

Before use, please ensure that your device has no visible damage.

Test to see if the device displays a clear, undisturbed image.

Check that the settings for the thermal imaging monocular are correct.

**Installing/Removing the battery**

The ACE series uses a dual battery system with an internal battery and a replaceable 18650 battery.

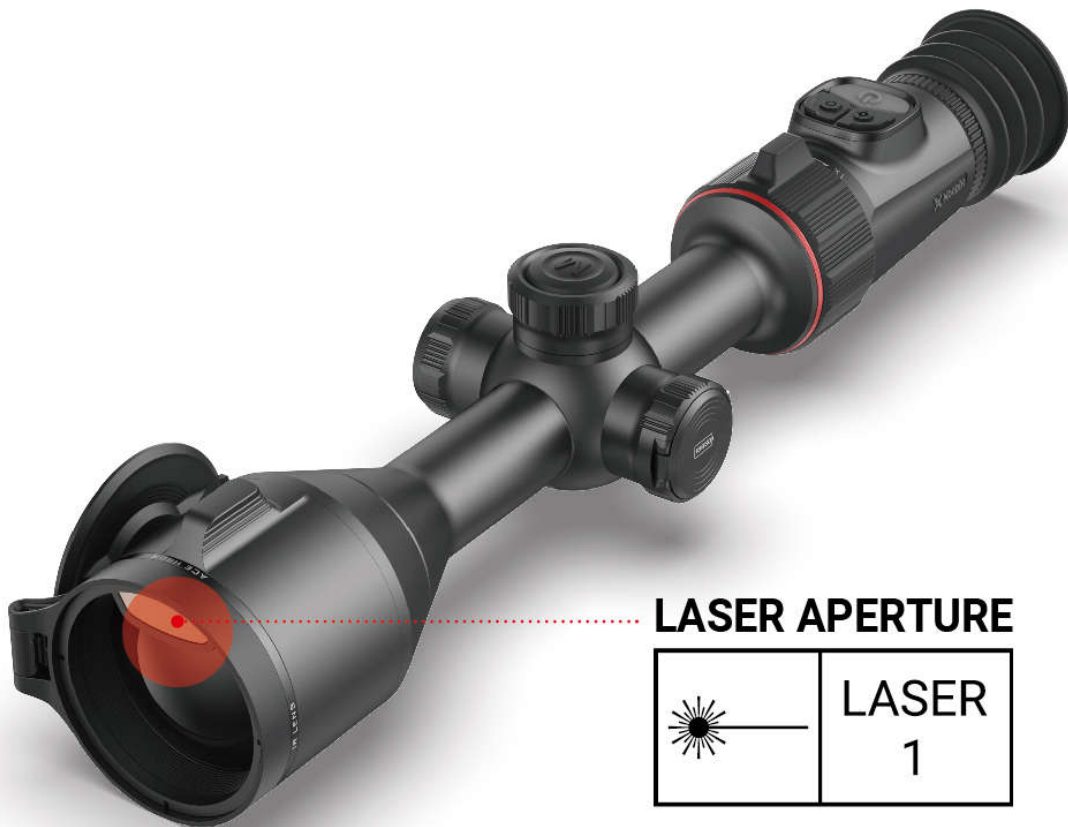
Please refer to the section of "Battery Install" for details on how to replace the 18650 battery.



# **Laser Warning**

**ACE H50R/ACE S60R**

Telescopes and binoculars may pose an eye hazard and thus the user should not direct the beam into an area where such instruments are likely to be used.



**LASER APERTURE**



Caution Use of controls or adjustments or performance of procedures other than those specified herein may result in hazardous radiation exposure" (or alternatively, equivalent appropriate warnings)

# ACE

## Quick Start Guide



**EN**

**Thermal Imaging Scope**

**1-12**

**DE**

**Wärmebild-Monokularfernrohr**

**13-24**

**IT**

**Monocolo per immagini termiche**

**25-36**

**FR**

**Lunette d'imagerie thermique**

**37-48**

**ES**

**Visor de Imágenes Térmicas**

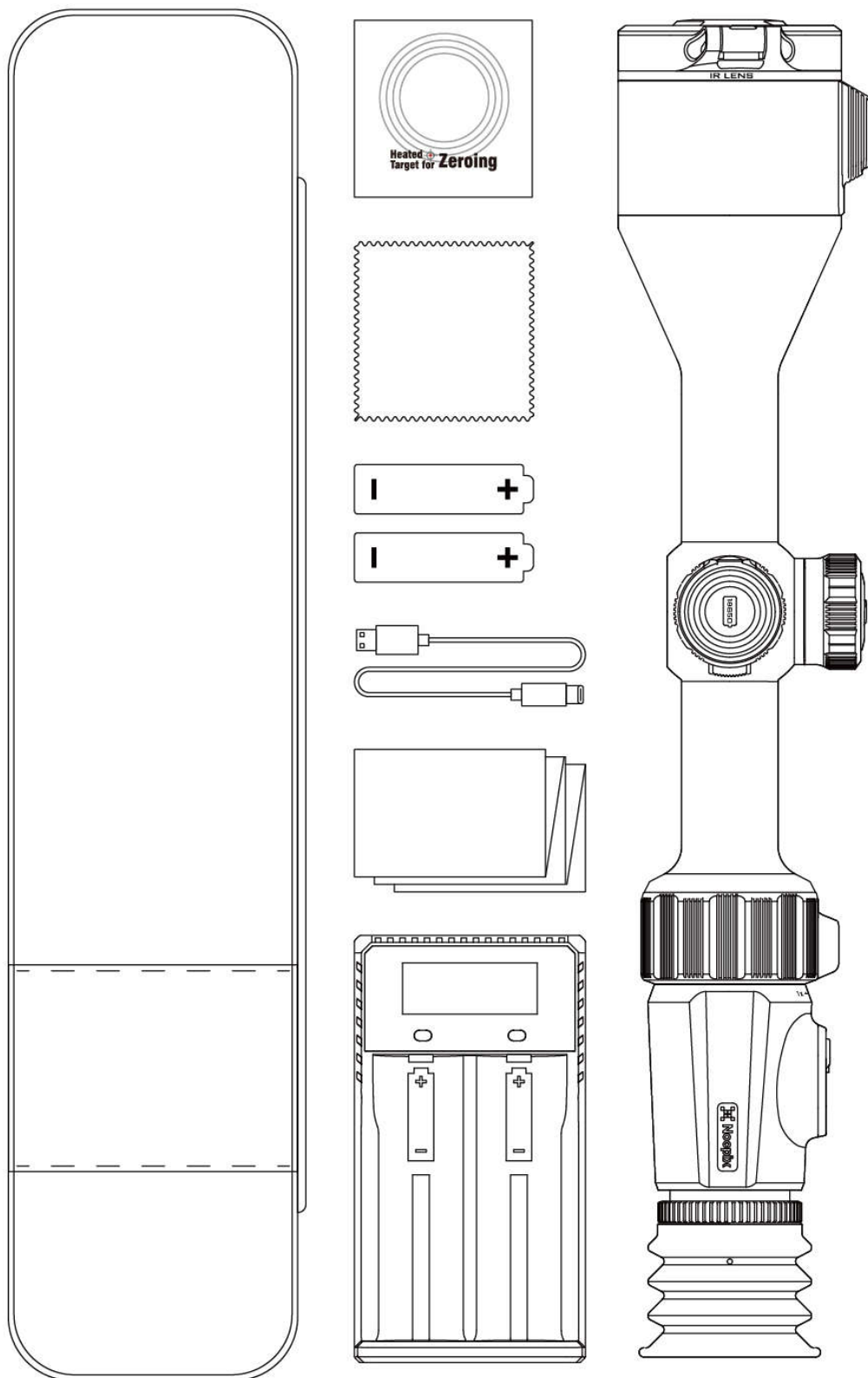
**49-60**



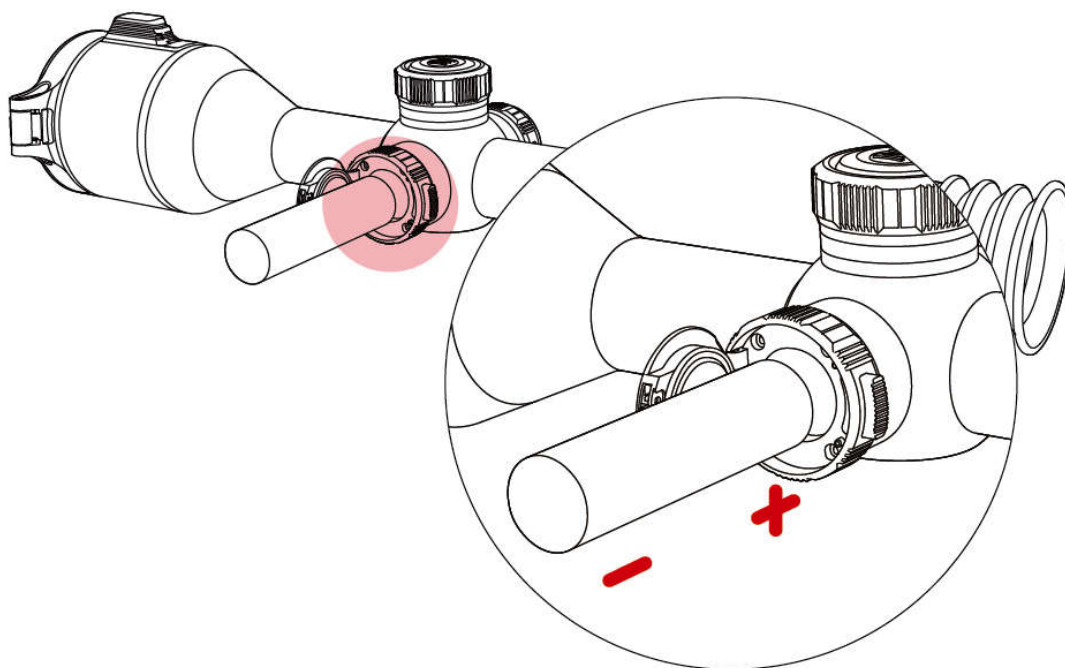
**RoHS**



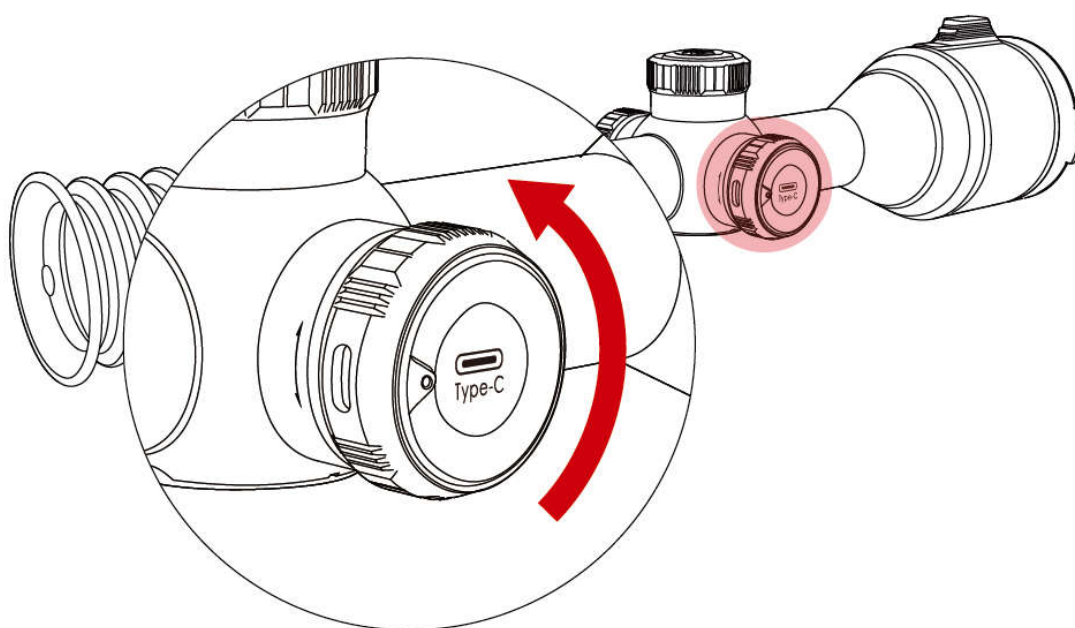
# Accessories



## | Battery Install

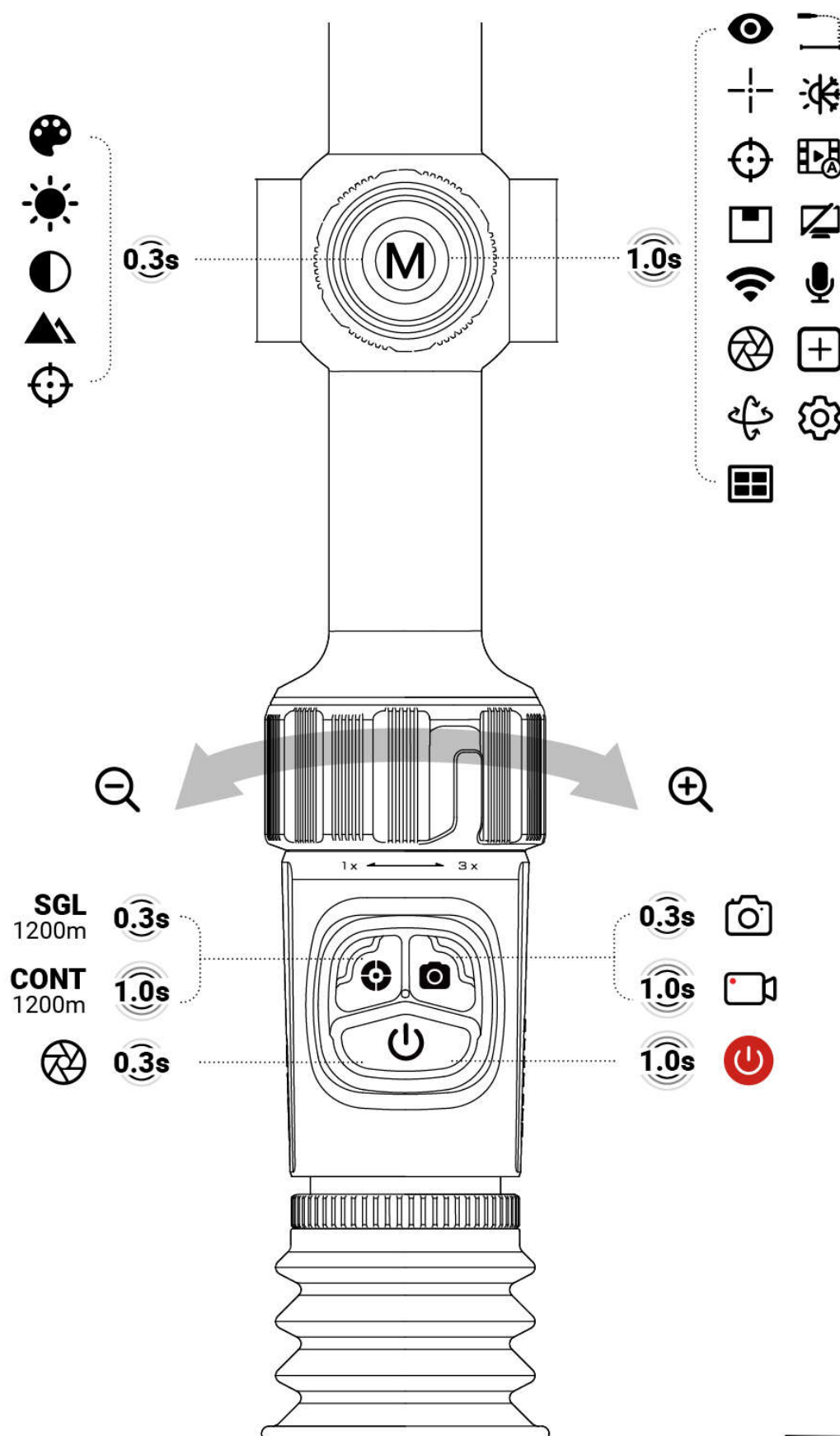


## | Type-C port



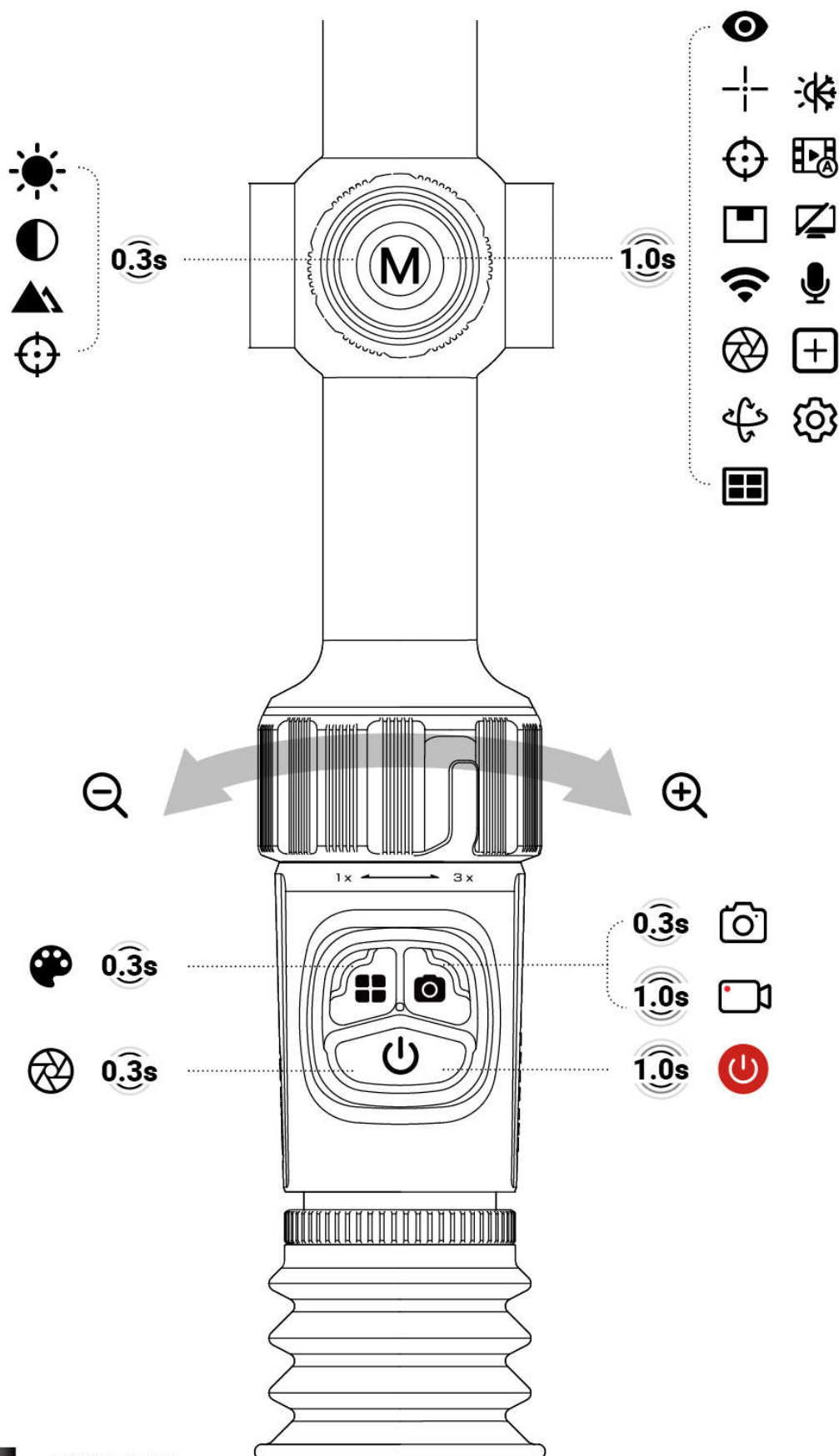
# Button Descriptions

ACE H50R/ACE S60R



# Button Descriptions

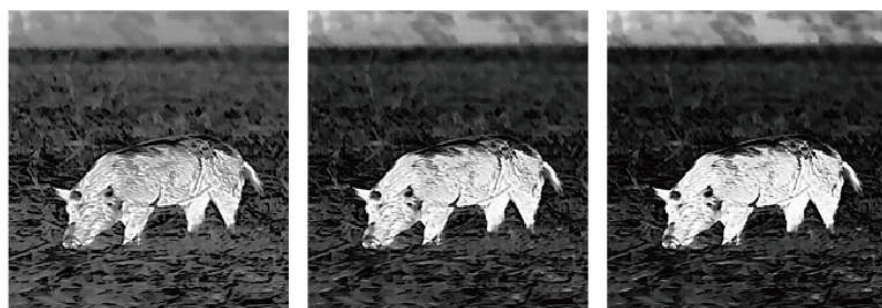
ACE H50/ACE L35



# Shortcut Menu



←←←←← 1 5 10



←←←←← 1 5 10

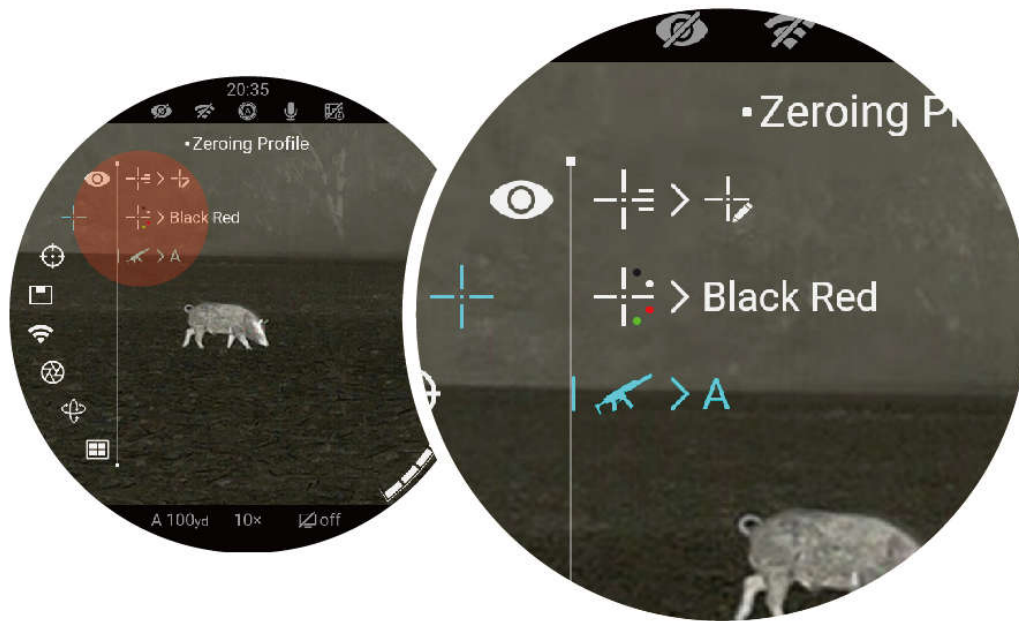


←←←←← 1 5 10



# | Zeroing

Set the zeroing profile to A, B, C, D, E, or F in “Reticle” “Zeroing Profile”.

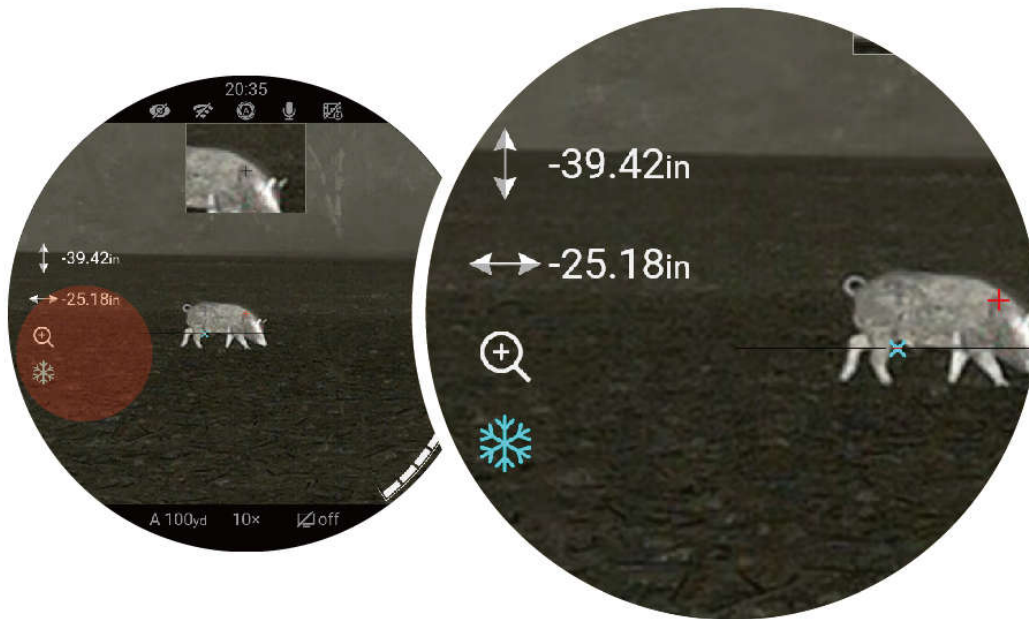


Set a suitable target and take one good shot at the target.



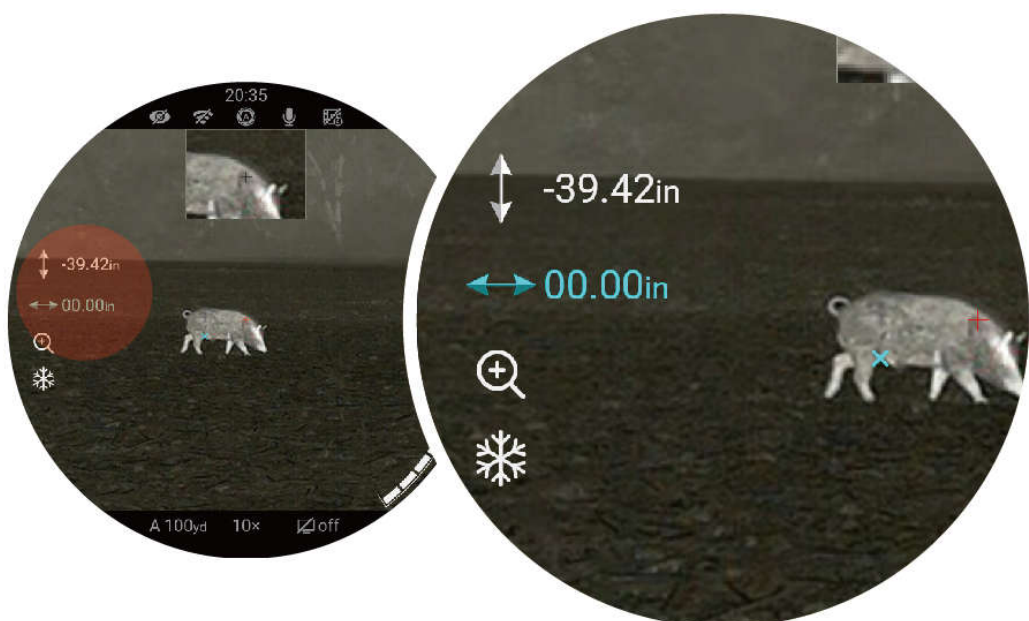


If the POI does not match the reticle, select the Image Freeze icon, short press the Menu button to freeze the image.

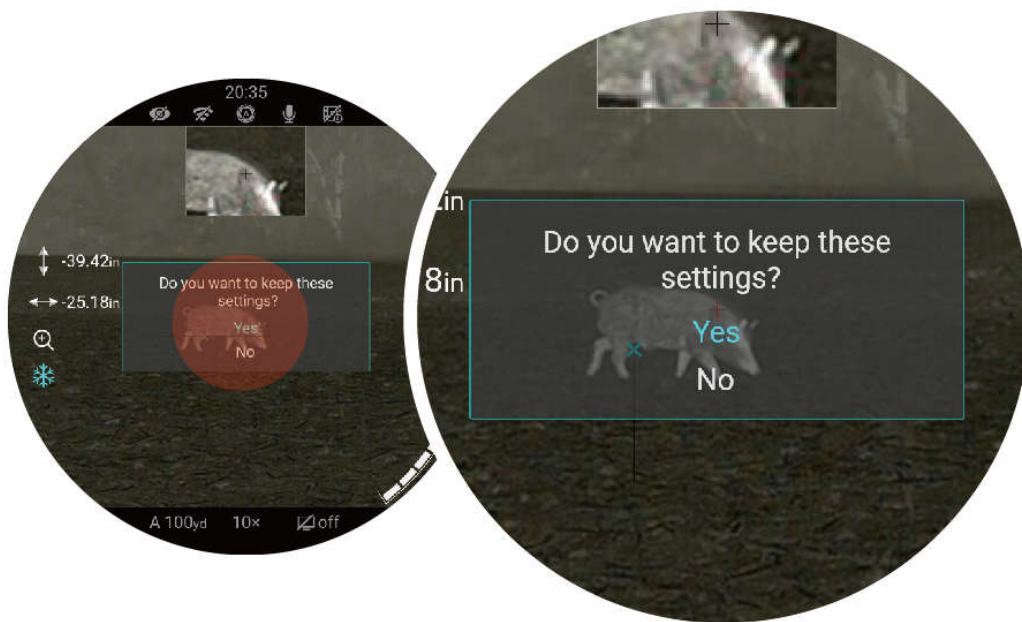


**Adjust the X/Y position of the reticle:**

- Short press the Menu button to select X or Y direction. The selected axis will turn from white to blue
- Rotate the controller to move the reticle position.
- A red cursor representing the original position of the reticle.



d. When the reticle matches the POI, long press the Menu button to save the reticle position.



**Shoot again to check POI matches the reticle or not.  
If not, do the zeroing again.**

# Laser Rangefinder

## ACE H50R/ACE S60R



**SGL**

**0.3s**



**CONT**

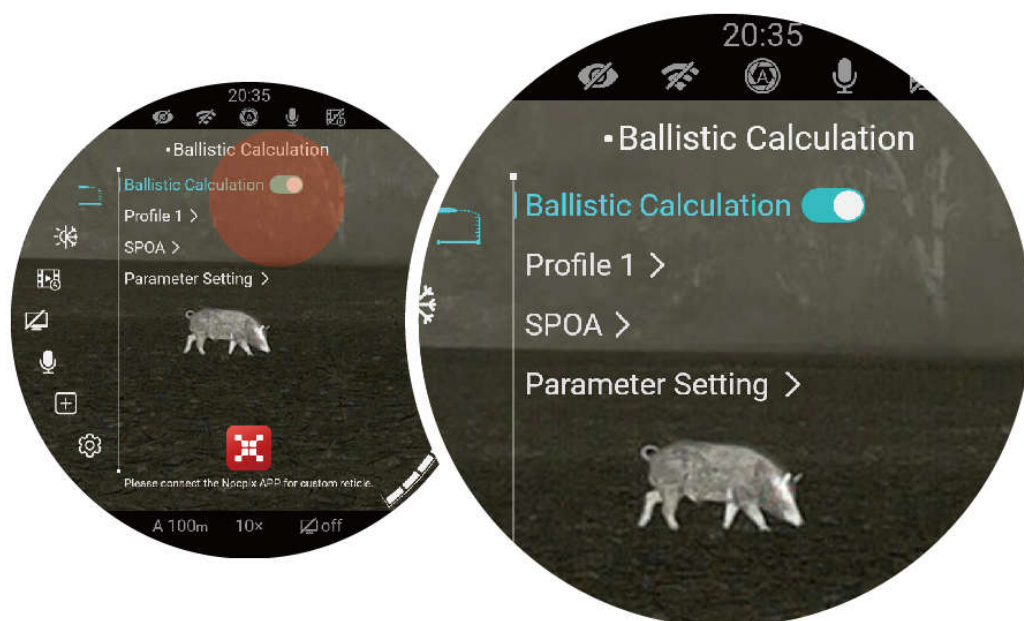
**1.0s**



# Ballistic Calculation

## ACE H50R/ACE S60R

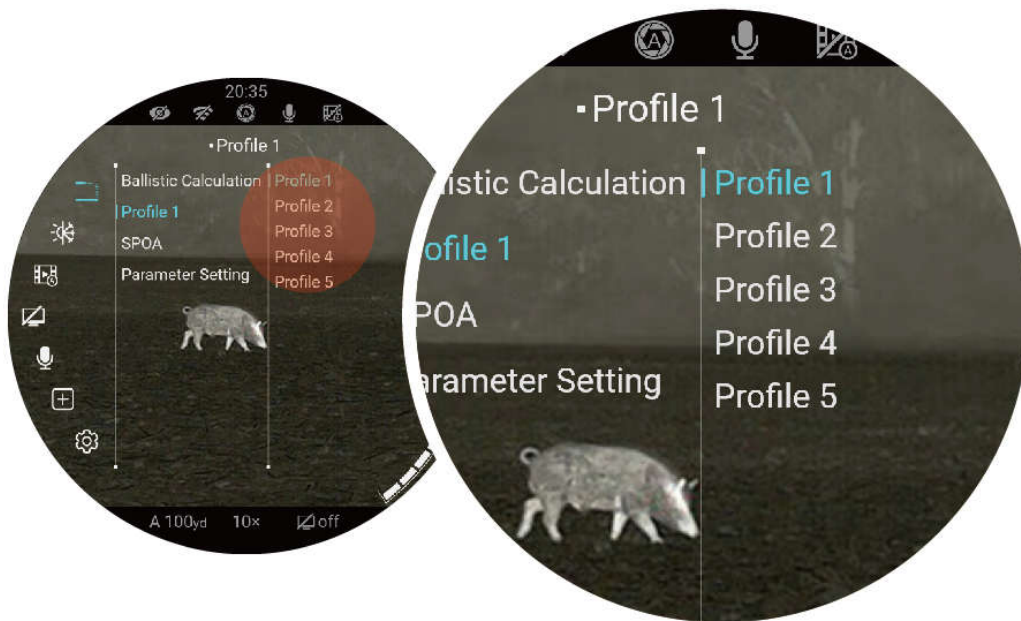
Set the Ballistic Calculation to ON.



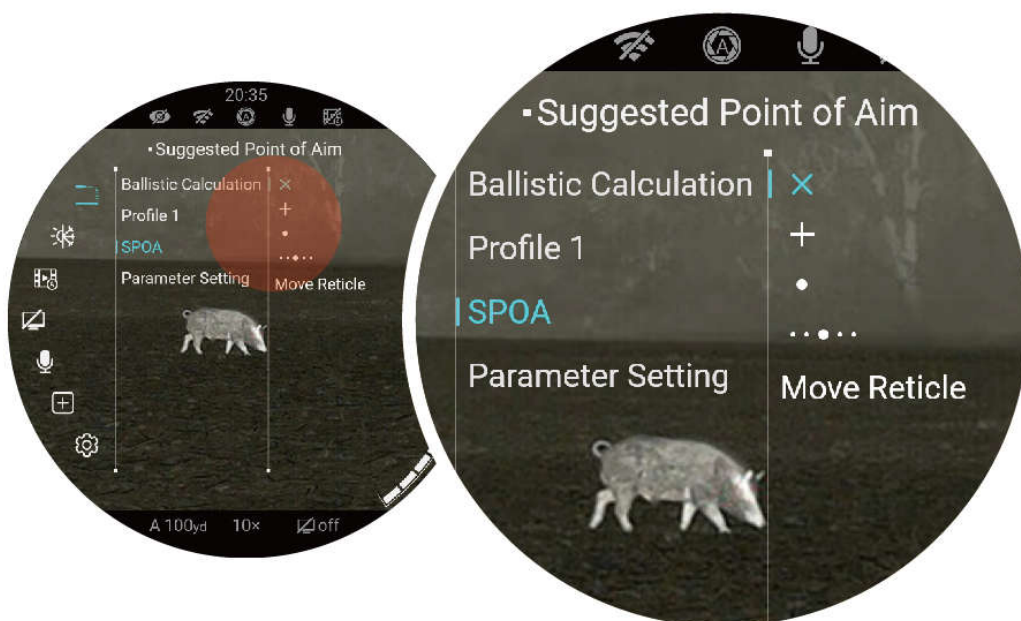


**Select the bullet profile from 1 to 5.**

**i** You can also customize the bullet name through the NOCPIX APP.

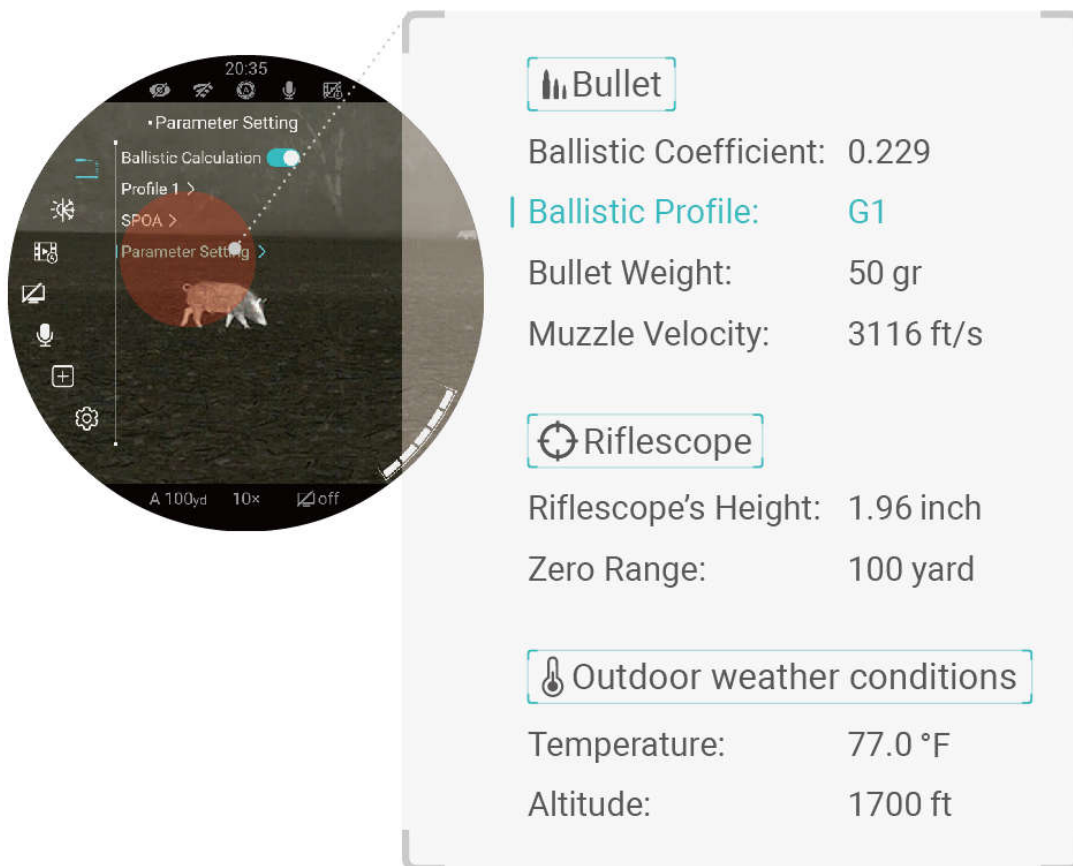


**Set the Suggested Point of Aim to  $\times$  ,  $+$  ,  $\bullet$  or  $\dots$  ;  
When SPOA is set to Move Reticle, the ACE will automatically  
move the original reticle to the SPOA.**



## Set parameters of bullets, rifles, and the environment.

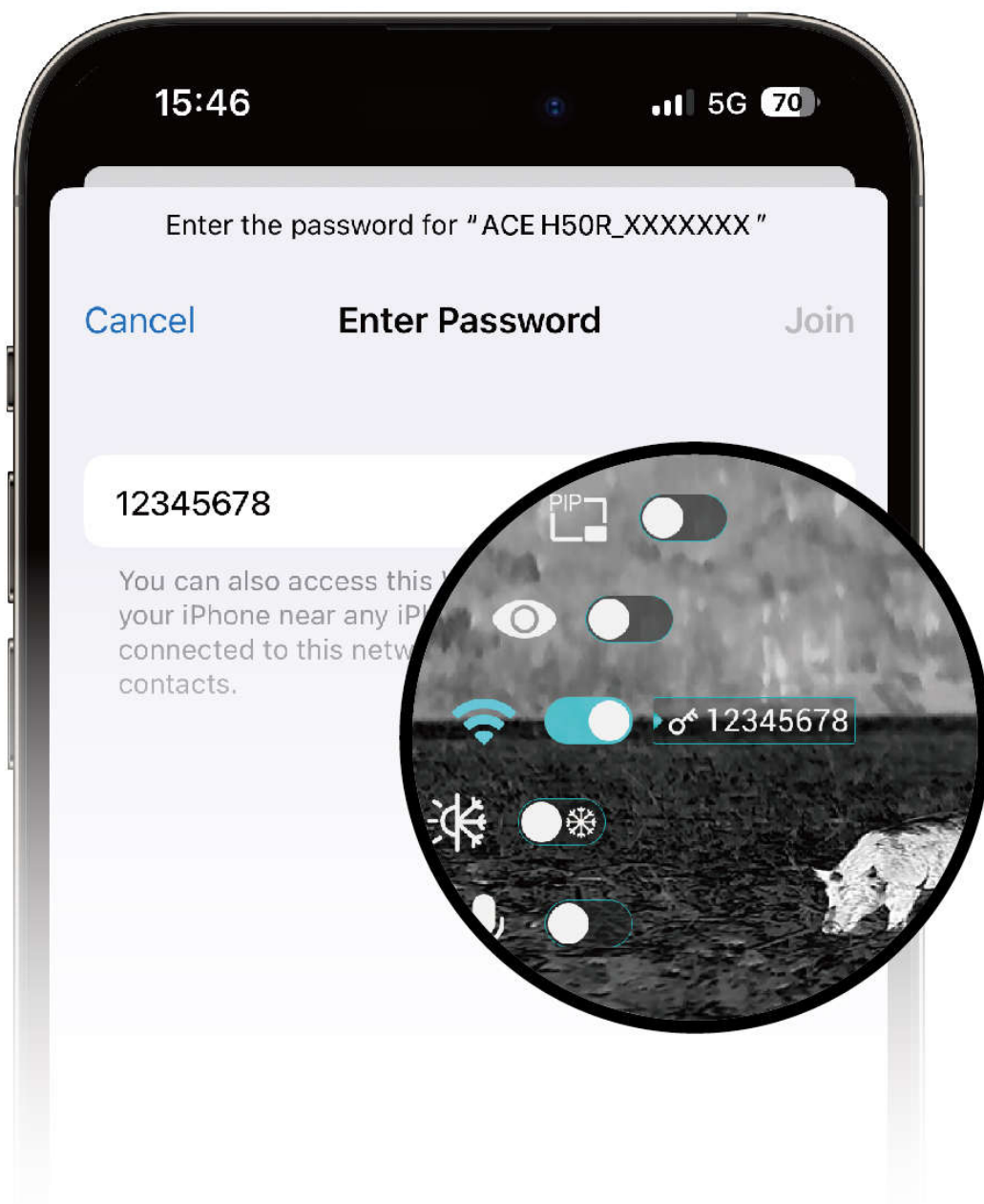
- ❗ Parameter settings can also be adjusted through the NOCPIX APP.



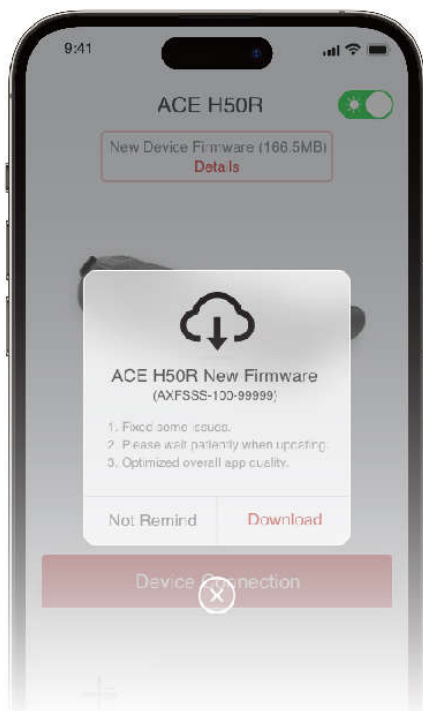
Once the settings are completed, a single ranging will prompt the recommended POI.



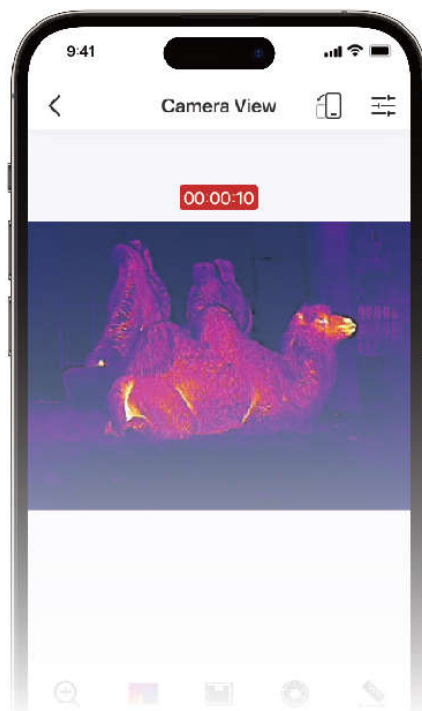
# | App



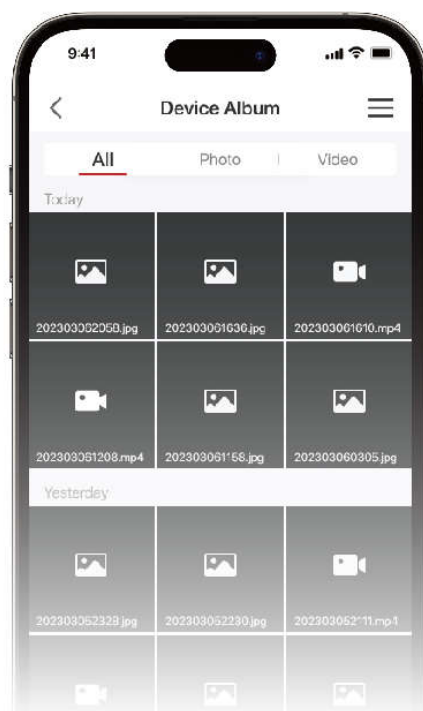




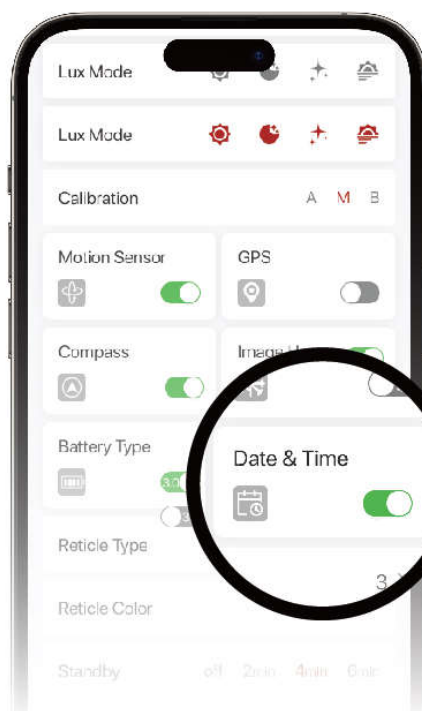
Firmware  
upgrade



Real-time image  
transmission



Device file



Date & Time  
calibration

# Specifications

Model	ACE L35	ACE H50
Resolution, Pixels	384×288/12μm	640×512/12μm
NETD, mK	≤18	≤15
Frame Rate, Hz	60	
Objective Lens, mm	35/F0.9	50/F0.9
Field of View (H×V), °/m at 100m	7.5×5.7/ 13.2×9.9	8.8×7.0/ 15.4×12.3
Magnification, ×	4~16	3~24
Ocular Zoom, x	1~3	
Eye Relief, mm	50	
Diopter, D	-5~+5	
Detection Range, m (Target Size: 1.7m×0.5m, P(n)=99%)	1800	2600
Display	AMOLED 2560×2560	
Battery Type	Built-in battery/4000mAh + replaceable 18650 battery	
Max. operation time, (t=22°C) h	8	
Memory capacity, GB	64GB	
IP rating	IP67	
Operating temperature, °C	-20 ~ +50	
LRF, m	-	
Weight, g (with battery)	?	?
Dimension, mm	?	?

Model	ACE H50R	ACE S60R
Resolution, Pixels	640×512/12μm	1280×1024/12μm
NETD, mK	≤15	≤15
Frame Rate, Hz	60	50
Objective Lens, mm	50/F0.9	60/F0.9
Field of View (H×V), °/m at 100m	8.8×7.0/ 15.4×12.3	14.7×11.7/ 25.6×20.5
Magnification, ×	3~24	2~24
Ocular Zoom, x	1~3	
Eye Relief, mm	50	
Diopter, D	-5~+5	
Detection Range, m (Target Size: 1.7m×0.5m, P(n)=99%)	2600	3100
Display	AMOLED 2560×2560	
Battery Type	Built-in battery/4000mAh + replaceable 18650 battery	
Max. operation time, (t=22°C) h	8	7
Memory capacity, GB	64GB	
IP rating	IP67	
Operating temperature, °C	-20 ~ +50	
LRF, m	1200 ±1	
Weight, g (with battery)	?	?
Dimension, mm	?	?

## | Get More Information



Website:  
[www.nocupix.com](http://www.nocupix.com)

User manual



Facebook



Instagram



YouTube

FCC ID:2BHFB-ACE-00

Labeling requirements.

This device complies with part 15 of the FCC Rules. Operation is subject to the following two conditions: (1) This device may not cause harmful interference, and (2) this device must accept any interference received, including interference that may cause undesired operation.

Information to user.

Any Changes or modifications not expressly approved by the party responsible for compliance could void the user's authority to operate the equipment.

Note: This equipment has been tested and found to comply with the limits for a Class B digital device, pursuant to part 15 of the FCC Rules. These limits are designed to provide reasonable protection against harmful interference in a residential installation. This equipment generates uses and can radiate radio frequency energy and, if not installed and used in accordance with the instructions, may cause harmful interference to radio communications. However, there is no guarantee that interference will not occur in a particular installation. If this equipment does cause harmful interference to radio or television reception, which can be determined by turning the equipment off and on, the user is encouraged to try to correct the interference by one or more of the following measures:

- Reorient or relocate the receiving antenna.
- Increase the separation between the equipment and receiver.
- Connect the equipment into an outlet on a circuit different from that to which the receiver is connected.
- Consult the dealer or an experienced radio/TV technician for help.

Frequency range of WLAN radio module: 2412-2462 MHz

This device complies with RF exposure requirements for general population exposure conditions.



**Inlumen Technologies Co., Ltd.**

**Email:** [service@nocpix.com](mailto:service@nocpix.com)

**Web:** [www.nocpix.com](http://www.nocpix.com)

**Add.:** North 6F, Building B3, Hefei Software Park, No.800 Wangjiang West Road, Hefei National High-tech Industry Development District, Anhui, China.