

Deluxe Massage Chair

A818

U S E R M A N U A L

We are ready!

CONTACT US!

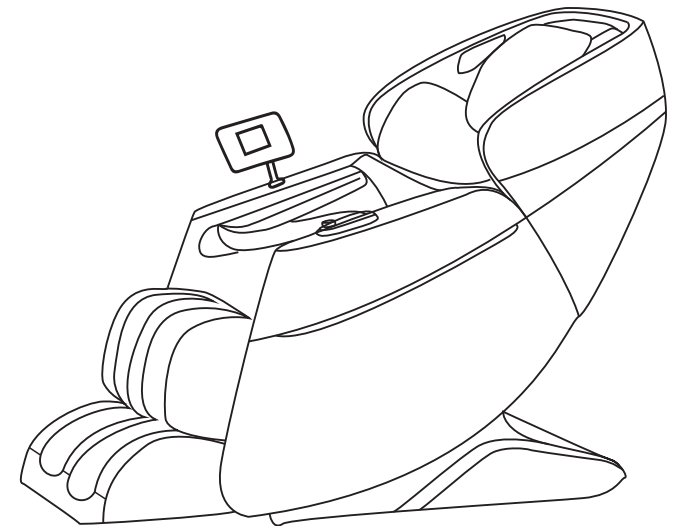
If you need help regarding product issues, after-sales service, or other relevant problems, please contact us via email.

Replacements for missing or damaged part will be shipped ASAP!

Email: imassager71@outlook.com

Please have the following information ready when requesting for service:

- Order ID
- Problem Description
- Serial number on the electric cabinet



Thank you for choosing our product and your support. In order to understand the directions fully, please read user's manual carefully. And after reading, please keep it for next browsing. We reserve the right of final explanation to the design of product. Dimensions and specifications are subject to change without notice for further improvement.

Contents

Safety	1-6
Preparation Before Use	7-8
Move the Chair	7
Place the Chair	7
Connect Power	8
Components	9-13
Outer Structure	9
Controller	10
Panel Icon Instructions	11-13
Cleaning and Maintenance	14
FCC Compliance Statement	15

IMPORTANT SAFETY INSTRUCTIONS

This massage chair is intended for household only. When using an electrical appliance, basic precautions should always be followed, including the following:

Read all instructions before using this massage chair.

DANGER - To reduce the risk of electric shock:

- 1) Always unplug this appliance from the electrical outlet immediately after using and before cleaning.
- 2) Never use pins or other metallic fasteners with this appliance.
- 3) Carefully examine the covering before each use. Discard the appliance if the covering shows any sign of deterioration, such as checking, blistering, or cracking.
- 4) Keep Dry - Do not operate in a wet or moist condition.

WARNING - To reduce the risk of burns, fire, electric shock, or injury to persons:

- 1) An appliance should never be left unattended when plugged in. Unplug from outlet when not in use, and before putting on or taking off parts.
- 2) Do not operate under blanket or pillow. Excessive heating can occur and cause fire, electric shock, or injury to persons.
- 3) Close supervision is necessary when this appliance is used by, on, or near children, invalids, or disabled persons. Keep children away from extended foot support.
- 4) Use this appliance only for its intended use as described in this manual. Do not use attachments not recommended by the manufacturer.
- 5) Never operate this appliance if it has a damaged cord or plug, if it is not working properly, if it has been dropped or damaged, or dropped into water. Return the appliance to a service center for examination and repair.
- 6) Do not carry this appliance by supply cord or use cord as a handle.
- 7) Keep the cord away from heated surfaces.
- 8) Never operate the appliance with the air openings blocked. Keep the air openings free of lint, hair, and the like.
- 9) Never drop or insert any object into any opening.

- 10) Do not use outdoors.
- 11) Do not operate where aerosol (spray) products are being used or where oxygen is being administered.
- 12) To disconnect, turn all controls to the off position, then remove plug from outlet.
- 13) Temperatures sufficiently high to cause burns may occur regardless of the control setting. Do not use on an infant or invalid or on a sleeping or unconscious person. Do not use on insensitive skin or on a person with poor blood circulation. Check the skin in contact with the heated area of the appliance frequently to reduce the risk of blistering.
- 14) Do Not Crush - Avoid sharp folds.
- 15) Do not use massager in close proximity to loose clothing or jewelry.
- 16) Keep long hair away from massager while in use.
- 17) Connect this appliance to a properly grounded outlet only. See Grounding Instructions.
- 18) The apparatus shall not be exposed to dripping or splashing and that no objects filled with liquids, such as vases, shall be placed on the apparatus.
- 19) An apparatus with CLASS I construction shall be connected to a MAINS socket outlet with a protective earthing connection.
- 20) The appliance coupler is used as the disconnect device, the disconnect device shall remain readily operatable.
- 21) This appliance is not intended for use by persons (including children) with reduced physical, sensory or mental capabilities, or lack of experience and knowledge, unless they have been given supervision or instruction concerning use of the appliance by a person responsible for their safety.
- 22) If it is not in use for a long time or after use, please turn off the power and pull out the power plug.
- 23) Do not damage, break, over-bend, compress, tighten, wind, rotate or knot the power cord.
- 24) This appliance can be used by children aged from 8 years and above and persons with reduced physical, sensory or mental capabilities or lack of experience and knowledge if they have been given supervision or instruction concerning use of the appliance in a safe way and understand the hazards involved. Children shall not play with the appliance. Cleaning and user maintenance shall not be made by children without supervision.

Safety

SAVE THESE INSTRUCTIONS

This message chair is intended for household use only.

● Usage Environment

- Do not use the massage chair in an excessively humid or dusty environment as this may result in malfunction or electric shock.
- Do not use the massage chair in a room with a temperature of 104°F or higher.
- Do not expose the massage chair to heaters, stoves or direct sunlight.
- Place and use the massage chair on an even, non-slip floor.
- The massage chair is designed for home use and not for commercial purposes.

Caution

- The massage chair is to be used indoors only.
- If you use the massage chair in a cold room, do not increase the room temperature abruptly. It is recommended that you increase the temperature gradually to a normal level.
- If the massage chair is stored in a cold place and is being brought into a warm environment, it is advisable to wait one hour before use. This is because its performance may not be at optimum level, as there may be water droplets on the mechanical parts due to condensation. Using the massage chair under such conditions may result in malfunction.

IMPORTANT SAFETY INSTRUCTIONS

● Safety Precautions

- To ensure safe and correct use of the massage chair, do not operate it without reading this operation manual carefully.
- Do not use the massage chair when the upholstery or seat is removed. This may cause injury or malfunction.
- Do not use the massage chair in combination with other therapeutic equipment or electric blanket, etc., as this may result in ineffectiveness or injury.
- Do not use the massage chair an hour before or after eating as this may have adverse effects on the user.
- Do not allow children or pets to play around the massage chair, e.g., behind the backrest, under the seat or leg rest of the massage chair. This may result in injury.

Safety

- Do not rest or place heavy objects on the armrests, leg rest or backrest as this may result in malfunction or injury.
- Do not use the massage chair when your body is wet.
- Do not operate the massage chair with wet hands.
It is not recommended to use the massage for more than 30 minutes.
- Do not perform continuous massage on the same spot of your body for more than 5 minutes at a time as this may result in excessive stimulation and may have adverse effects.
- Do not insert your hand or foot along the paths of the massage rollers during use as this may cause injury.
- Stop operation immediately if you experience any discomfort.
- This product is not intended for self-treatment of conditions that should be managed by a qualified health care provider.
- People on medication or with medical conditions, please consult your doctor before use.
- Please do not use the product if you are not feeling well.
- Remove all scarves, neckties, necklaces and jewelry before using the massager.

● People with Medical Conditions

Consult your doctor before use if you:

- are under medical rest as ordered by a doctor.
- have spinal disorders, an abnormal spinal condition or have suffered a spinal injury.
- have back problems.
- have diabetes, osteoporosis or sensory impairment.
- have joint dysfunction.
- have a pacemaker or other electronic medical devices.
- may be pregnant.
- have phlebitis or thrombosis.
- have an increased risk for blood clots.
- had recent surgery.
- have surgical pins, screws, or anything mechanical implanted in your body.

Safety

● Instances When the massage chair Should Not Be Used

In the following events, please switch off the main power switch immediately and disconnect the power cord from the electrical outlet:

- If water is accidentally spilled onto the massage chair. This may result in electric shock or malfunction.
- If the fabric of the backrest is torn and the internal components are exposed.
- If pain or discomfort is felt during massage, stop operation immediately and consult your doctor.
- If you detect any malfunction or any other abnormal condition during operation.
- If there is a power failure. Injury may occur when power is restored unexpectedly.
- If there is lightning.

● Assembly and Repair of the massage chair

- Do not disassemble the backrest cover of the massage chair. Touching the internal components may result in malfunction or electric shock.
- The massage chair must only be professionally serviced or repaired. Do not attempt to disassemble or repair the massage chair yourself.

● Things to Note About the Power Plug and Cord

- Check that the Alternating Current (AC) voltage corresponds with the specifications indicated for the massage chair.
- Do not connect or disconnect the power plug from the electrical outlet with wet hands. This may result in malfunction or electric shock.
- When disconnecting the power plug, pull it by holding the plug, not the cord.
- Although operation will be stopped automatically by the Auto-Timer function, always remember to switch off the main power switch after use.
- Do not place the power cord under the massage chair or any other heavy objects.
- Do not wind the power cord around the massage chair as this may damage the cord and result in a fire or electric shock.
- Do not operate the massage chair with a damaged cord or extension cord.
- Do not use the massage chair if the electrical outlet is loose.
- If the power cord is damaged, it should be replaced by a qualified technician.

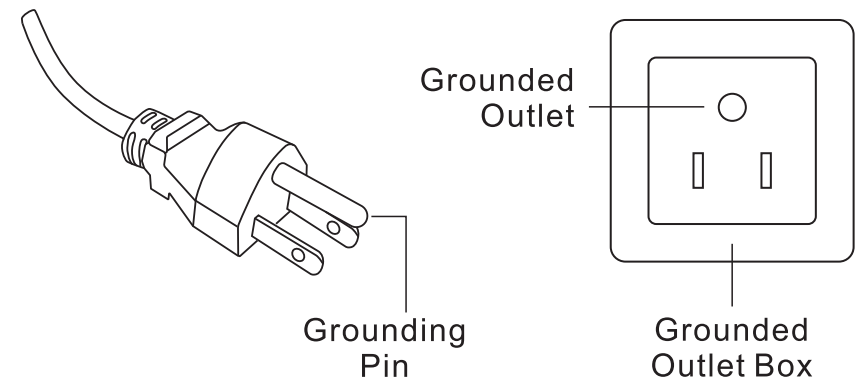
Safety

● Grounding Instructions

This product must be grounded. If it should malfunction or breakdown, grounding provides a path of least resistance for electric current to reduce the risk of electric shock. This product is equipped with a cord having an equipment-grounding conductor and a grounding plug. The plug must be plugged into an appropriate outlet that is properly installed and grounded in accordance with all local codes and ordinances.

DANGER - Improper connection of the equipment-grounding conductor can result in a risk of electric shock. Check with a qualified electrician or serviceman if you are in doubt as to whether the product is properly grounded. Do not modify the plug provided with the product - if it will not fit the outlet, have a proper outlet installed by a qualified electrician.

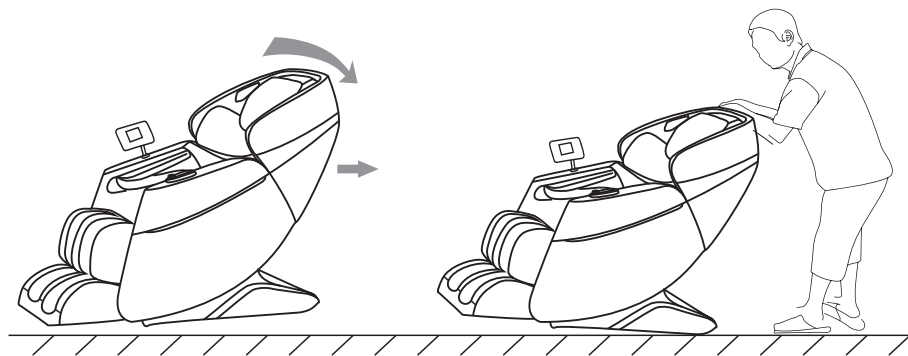
This product is for use on a nominal 100-240V circuit and has a grounding plug that looks like the plug illustrated in sketch A as following illustration. Make sure that the product is connected to an outlet having the same configuration as the plug. No adapter should be used with this product.



Preparation Before Use

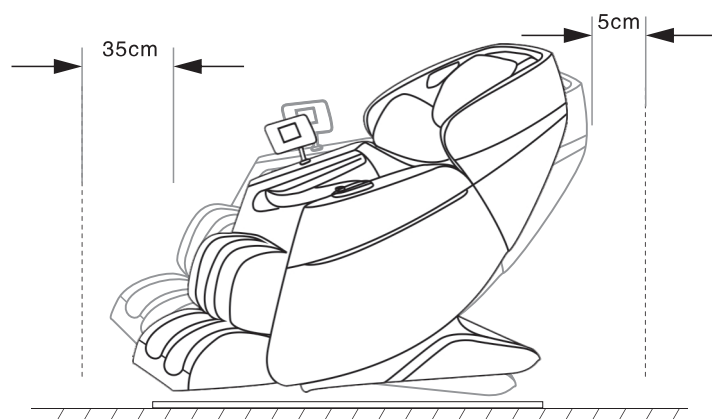
Move the Chair

- Please turn off the main power and unplug the power from the electrical outlet.
- Tilt the chair backward as shown in the picture below and wheel it to the desired location.
- Please cover the floor with mat when move the massage chair in case of any damage of floor will be made.



Place the Chair

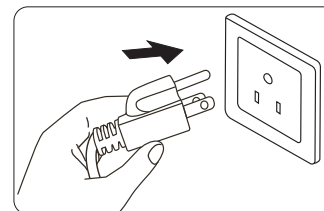
Please make sure that there is an allowance of more than 35cm behind the massage chair, and more than 5cm in front of the massage chair to allow the backrest to recline without obstruction during operation.



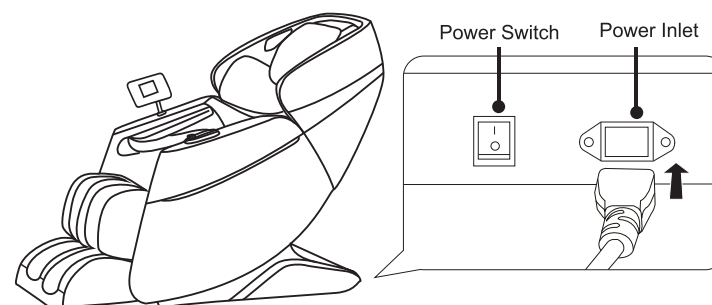
Preparation Before Use

Connect power

- Plug the power cord into power inlet.



- turn on the power switch.



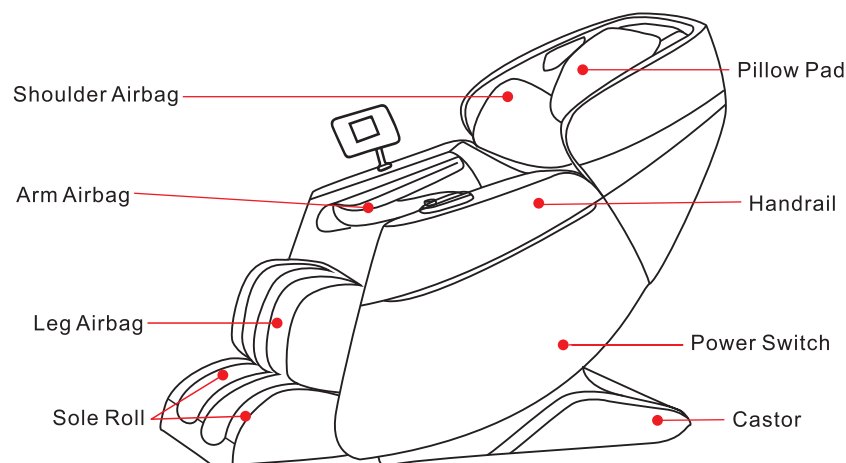
Components

1. Product features

- The whole machine has beautiful lines, bright colors, humanized design and green environmental protection materials.
- This product design 3 groups of kneading movement, 4 kneading head, to the human back, waist to realize kneading, massage function.
- The machine is equipped with a total of 20~30 air bags for feet, legs, arms, cushions and shoulders, which can freely show the function of air bag pressure and massage.
- Manual adjustment of the back, waist massage movement, a variety of massage techniques Switch freely, and achieve three speed adjustment .
- Air bag massage with one button switch can be manually adjusted for air bag massage of arms and legs, and the massage strength can be adjusted in three stages.
- Backrest can be adjusted according to the need to tilt Angle, 115 °~1 55° free adjustment, when the backrest Angle is adjusted to the lowest can achieve zero gravity function.
- One-key heating, constant temperature 35°C-45°C.
- Timing: 10-30 minutes adjustable, 10 minutes as a adjustable unit.

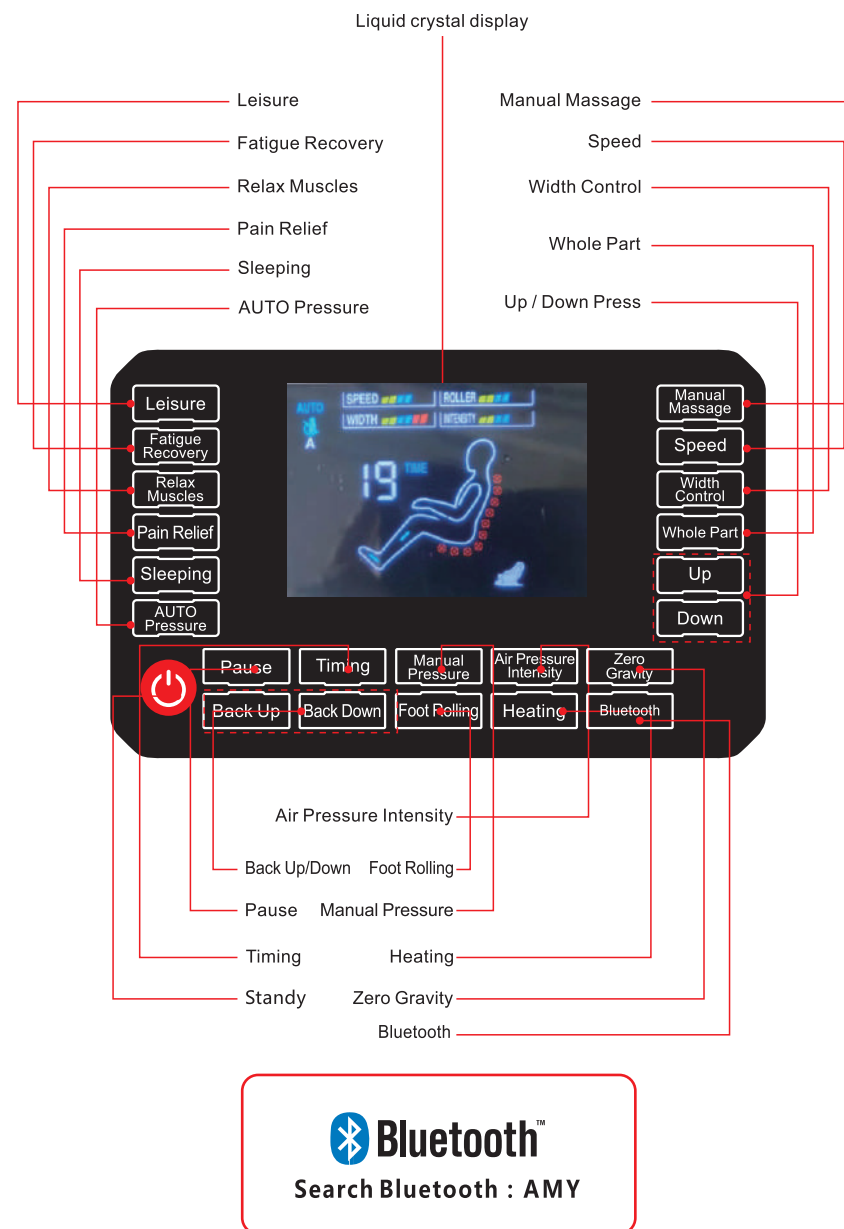
- ▶ Automatic intelligent body detection.
- ▶ Special L - shaped extended guide rail.
- ▶ Special sole roller scraping, with air bag swing massage.
- ▶ Special Bluetooth audio, massage at the same time, enjoy the fun of music.

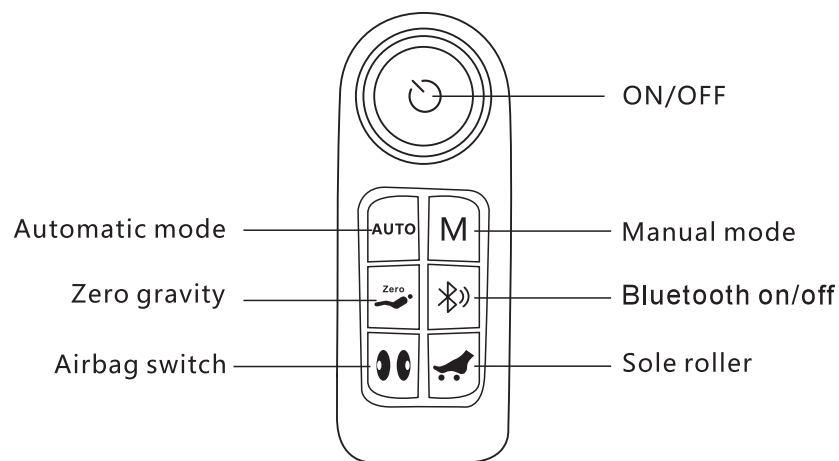
2. Name of each component



Components

Controller





4. Maintenance

1. For daily cleaning, please use neutral detergent and soft cloth to wipe. Do not use corrosive detergent.
2. If the power cord is damaged, in order to avoid danger, it must be replaced by the manufacturer's designated full-time personnel in the repair shop.
3. Please pull out the power when not using the product or cleaning to avoid danger.
4. Do not use any sharp objects to cut the surface of the product.
5. Do not place the product in a humid environment. It should be placed in a dry and ventilated place.
6. Do not apply heavy pressure or pressure to the product.

5. Matters needing attention

In order to ensure the safe and correct use of the massage chair, please refer to the operation manual carefully before using the product.

To reduce the risk of accidental fire, burn, electric shock or injury to others, please follow the following instructions:

- 1) Do not use AC power supply other than 100-240V.
- 2) When no one is using the machine, please be sure to remove the power plug of the massage chair from the socket. When the machine is not in daily use or before the device/parts are removed, please also be sure to remove the power plug from the socket in time.
- 3) In order to avoid accidental fire, electric shock or injury caused by overheating, please do not place the product under pillows, blankets and other coverings.
- 4) Adult guardians are required if the product is used by children or persons with physical and mental disabilities.
- 5) Please be sure to use the product in accordance with the usage described in the manual. Do not use parts other than those recommended by the manufacturer.
- 6) Please do not use the product when the following conditions occur: the power cord or power plug is damaged, the operation is abnormal, such as falling to the ground or other damage, falling into water, please send the product back to the maintenance service center for inspection and maintenance.
- 7) Do not drag the power cord to move the product or use the power cord as a grip.
- 8) The power cord must be kept at a safe distance from the heating surface.
- 9) Do not operate under the condition that the air outlet is blocked. Please keep the air outlet unobstructed to avoid being blocked by cotton dust, hair and other things.
- 10) Do not insert or drop objects into any openings of the product.
- 11) Do not use this product outdoors.
- 12) Do not operate the product in the place where spray products are used or filled with oxygen.
- 13) Cut off the power Please turn off all operation controls, and then pull out the power plug from the socket.
- 14) Do not cover the massage chair so as not to cause too high temperature and failure or fire.

Cleaning and Maintenance

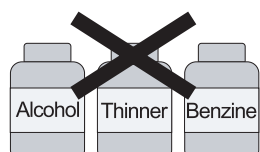
Maintenance methods

Please follow the below steps to clean leather and plastic parts

- Please ensure the main switch is turn off and the power plug is unplugged from the electrical outlet.
- Dip a soft, dry cloth in water or warm water containing 3% to 5% neutral detergent and wring it thoroughly.
- Clean the leather and plastic parts.
- Then wipe with dry soft cloth.
- Let it dry naturally.

Warning

- Do not use alcohol, thinner, gasoline and other chemicals for cleaning.
- Do not dry the surface with a blower.
- Do not iron the fabric.
- During maintenance, always unplug the power plug. Do not unplug it by wet hands.
- Please use a dust cover to avoid dust if you won't use the chair for a long time.
- As fabric's color may be dyed on the leather, be careful when using denim and colored cloth to wipe the product.
- Wipe the product with the melamine foam dipped in mild detergent, if the dirt is hard to remove.
- Do not let the leather touch plastic in case of the color fading.
- Water temperature should not exceed 40 degrees.



Please do not use



Water temperature
should not exceed
40 degrees



Do not iron

Troubleshoot

Fault Phenomenon	Probable Cause	Processing Method
There is a sound (running sound) *The sound of gasbag inflation *The sound of air bag deflating *Switching sound of solenoid valve *Working sound of air pump	When the product works, It makes the sound of mechanical operation	The voice is normal, don't need to deal with.
The machine doesn't work.	The power plug is not plugged into the socket. The socket switch isn't on. The massage button is not pressed.	Check the power plug and socket, and make sure the plug and socket are in good contact. Press the massage button.
The massage stopped suddenly in the process.	This product has just completed 20 minutes of rated working time, and automatically switches to standby mode.	If you want another massage, please press the on key again to turn on the massage function.
	Over rated service time, motor overheating protection.	Shut down and cut off the power supply, wait for the motor to cool down before using.

The company reserves the right to improve the products and specifications, such as changes without prior notice, product appearance in kind shall prevail;
This book has been carefully checked, but do not rule out the possibility of printing errors or misunderstandings on the content, please understand, the company reserves the right of interpretation.

 Improper disposal of waste will pollute the environment.

Product name	MASSAGE CHAIR
Product model	A818
Rated voltage	100-240V
Rated frequency	50/60Hz
Rated power	120W
Rated working hours	20 min

FCC Compliance Statement

This device complies with Part 15 of the FCC Rules. Operation is subject to the following two conditions:

(1) This device may not cause harmful interference, and (2) this device must accept any interference received, including interference that may cause undesired operation.

NOTE 1: This equipment has been tested and found to comply with the limits for a Class B digital device, pursuant to part 15 of the FCC Rules. These limits are designed to provide reasonable protection against harmful interference in a residential installation.

This equipment generates, uses and can radiate radio frequency energy and, if not installed and used in accordance with the instructions, may cause harmful interference to radio communications. However, there is no guarantee that interference will not occur in a particular installation. If this equipment does cause harmful interference to radio or television reception, which can be determined by turning the equipment off and on, the user is encouraged to try to correct the interference by one or more of the following measures:

- Reorient or relocate the receiving antenna.
- Increase the separation between the equipment and receiver.
- Connect the equipment into an outlet on a circuit different from that to which the receiver is connected.
- Consult the dealer or an experienced radio/TV technician for help.

NOTE 2: Any changes or modifications to this unit not expressly approved by the party responsible for compliance could void the user's authority to operate the equipment.

RF Exposure Statement

To maintain compliance with FCC'S RF Exposure guidelines, This equipment should be installed and operated with minimum 20cm between the radiator and your body. This device and its antenna(s) must not be co-located or operation in conjunction with any other antenna or transmitter.