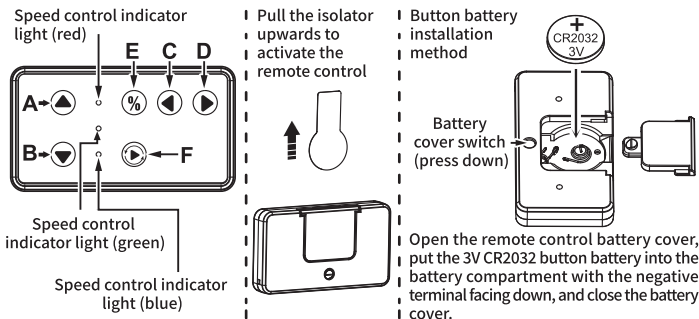


PRODUCT MANUAL

Please read the instructions carefully and keep them properly for future use

1.Warning:

- This product is suitable for ages 6 and above.
- The car battery cannot be replaced, but it is rechargeable.
- The remote control is a replaceable button battery, model: CR2032. The battery can only be replaced when accompanied by an adult. Swallowing it is dangerous!
- Adult supervision is required during charging to avoid accidents. Please unplug the charging plug. When not used for a long time, it also needs to be charged and maintained once every 2 weeks.
- The product should avoid contact with water and chemicals to prevent damage. Do not use it on soft surfaces, such as blankets, sand, etc. Because it will affect the speed and life.

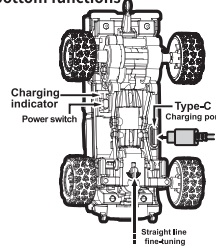


2. Remote control function description:

1. A key to move forward, B key to move backward, C key to turn left, D key to turn right
2. Short press E key to switch to three-speed adjustment. When the throttle output is 40%, the green light is on, 70% is red, and 100% is red and green.
3. Long press F key for 2 seconds to enter automatic demonstration, press any key to exit automatic demonstration.
4. Cruise control function description (5-speed adjustment).
 - ① Short press F key to enter cruise control mode, the blue light is on, and the initial 0 gear is no power.
 - ② A key is for speed increase, B key is for speed reduction, when the gear reaches the top, the red and green lights flash 3 times.
 - ③ Short press F key to reset the positioning cruise, change the current gear to 0 gear. Press E key to cancel cruise control.
5. Press and hold the E key for 3 seconds to turn off the remote control. When the remote control is off, press any key to turn it on and enter binding mode.

6. The remote control distance is greater than 15M.
7. The distance of the APP remote control is about 10M (the receiving and transmitting distance will be affected by different models of mobile phones and the location).
8. When the remote control indicator light brightness decreases and the remote control distance becomes closer, please replace the remote control battery CR2032. Use a tool to press the battery cover switch, open the battery compartment, replace the battery according to the same model and direction, and cover the battery cover.

A.Illustration of car bottom functions



B.Mobile APP



Apple mobile phone: Search for the RC Car model on the app store to download and install, or use a browser to scan the QR code to download.

Android phone: Use any browser to scan the QR code to download and install.

Note: When using the mobile APP to control the car, please turn off the power of the remote control first to prevent the remote control from interfering with the APP operation.

3. Model function description:

1. When the battery is low, all lights flash quickly and slow down. After 20 seconds, the power is turned off (please charge in time when the battery is low).
2. It will flash slowly when the car is not linked to the frequency. It will also flash slowly when the frequency is lost when it exceeds the distance of the remote control while driving.
3. If there is no operation for 5 minutes, the car will enter sleep mode and you need to press the power switch again to restart the car.
4. The red light is bright during the charging process of the car, and the red light will dim when the charging is completed. The charging process requires adult supervision throughout the process. The charging plug must be unplugged after the power is fully charged to prevent accidents.
5. The charging port is Type-C, which can be used with universal mobile phone charging heads but does not support fast charging.
6. Short press the power button to turn on the car, and long press for 2 seconds to turn off the car.
7. The rear lights flash when backing up.

4. Product parameters:

2.4G receiving and transmitting, 3-speed speed adjustment, cruise control, 1:88 high torque drive box, 3.7V-200mA rechargeable lithium battery, nylon chassis automatic demonstration.

FCC Statement

This device complies with part 15 of the FCC Rules. Operation is subject to the following two conditions: (1) This device may not cause harmful interference, and (2) this device must accept any interference received, including interference that may cause undesired operation.

This equipment has been tested and found to comply with the limits for a Class B digital device, pursuant to part 15 of the FCC Rules. These limits are designed to provide reasonable protection against harmful interference in a residential installation. This equipment generates, uses and can radiate radio frequency energy and, if not installed and used in accordance with the instructions, may cause harmful interference to radio communications. However, there is no guarantee that interference will not occur in a particular installation. If this equipment does cause harmful interference to radio or television reception, which can be determined by turning the equipment off and on, the user is encouraged to try to correct the interference by one or more of the following measures:

- Reorient or relocate the receiving antenna.
- Increase the separation between the equipment and receiver.
- Connect the equipment into an outlet on a circuit different from that to which the receiver is connected.
- Consult the dealer or an experienced radio/TV technician for help.

Caution: Any changes or modifications to this device not explicitly approved by manufacturer could void your authority to operate this equipment.

RF Exposure Information

The device has been evaluated to meet general RF exposure requirement. The device can be used in portable exposure condition without restriction.