

MX-C10

AUTOMATIC SMART LOCK

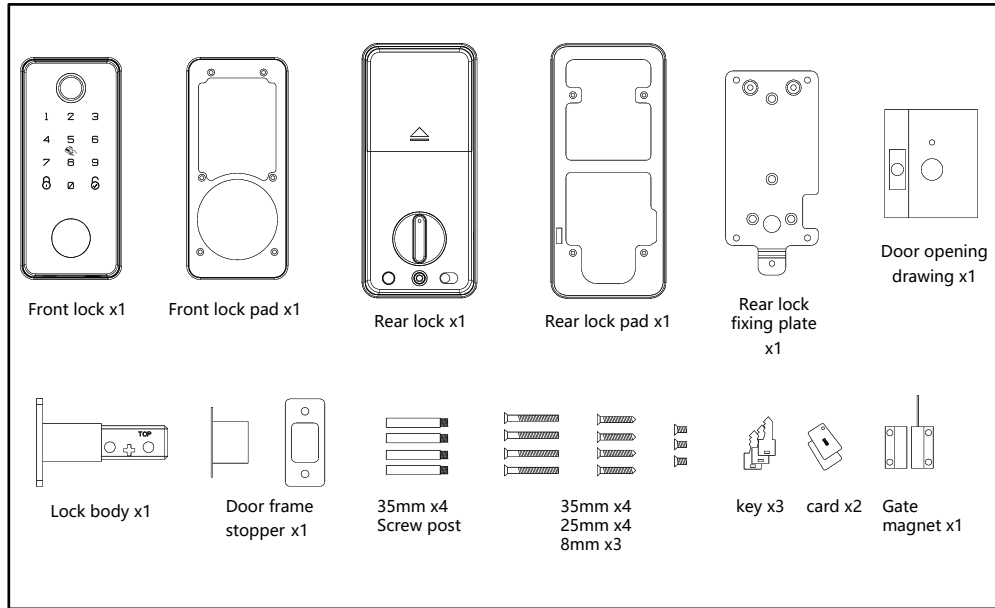


Note:

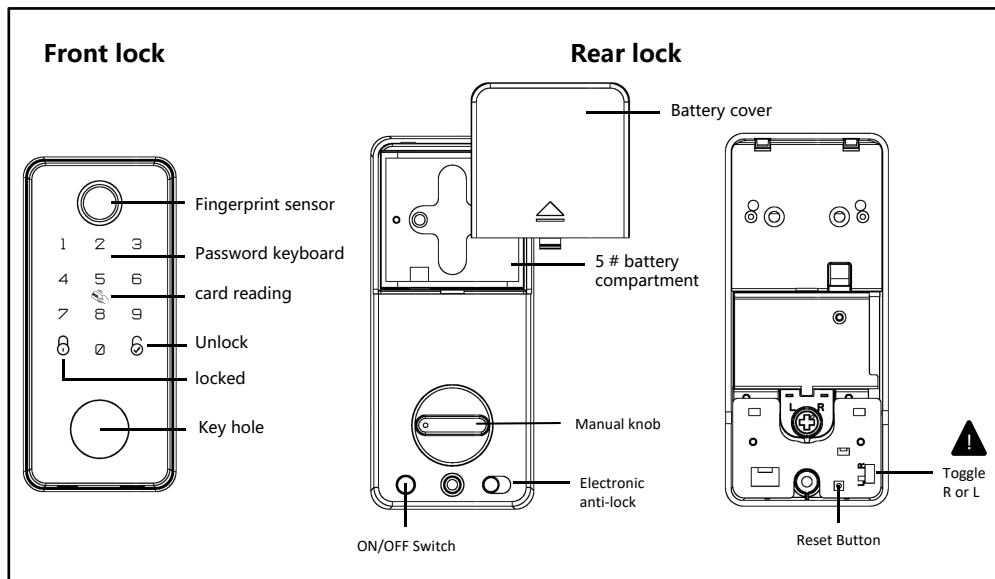
1. This lock is equipped with mechanical keys for manual unlocking. Remove mechanical keys from the package and keep them in a safe place and always have access to them.
2. To power on the lock, four alkaline AA batteries(not included) are required. Non-alkaline and rechargeable batteries ARE NOT RECOMMENDED.
3. This lock is not designed to be exposed to direct sunlight or rain. It is not waterproof IP rated
4. Keep your fingers clean when using this lock.

Please read this manual before operating your Smart Lock, and keep it for further reference.

1. Components Overview



2. Lock Body Overview

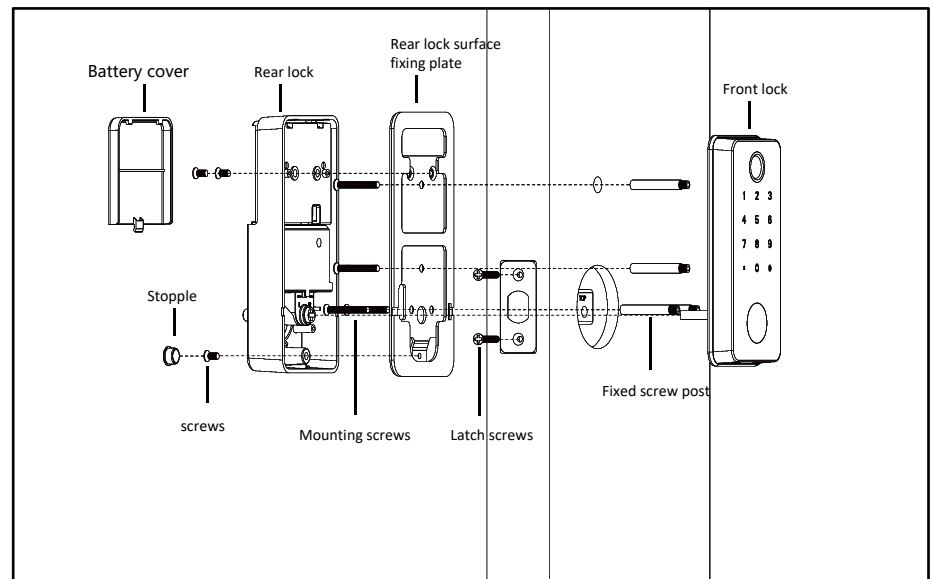


3. Specifications

Material	Aluminum alloy	Model NO.	MX-C10
Door thickness	35mm-60mm	Code Length	4~8 digits
Working Temperature	-20°C~70°C	Working Humidity	20%~80%RH
Working Power Consumption	<500mA	Static Power Consumption	<50uA
Power Supply	6V (4pcsAA Alkaline Batteries not included)		
Unlocking Methods	App Access, Fingerprint, Card, Password & Mechanical Key		
User Capacity	9 Administrators		
	Fingerprint (100)/Card (200)/ Password (200)		
	Unlimited App temporary passwords		
Product Dimension	Front	62(W) x 140(H) x 16.5(D) mm	
	Back	70(W) x 160(H) x 28.5(D) mm	

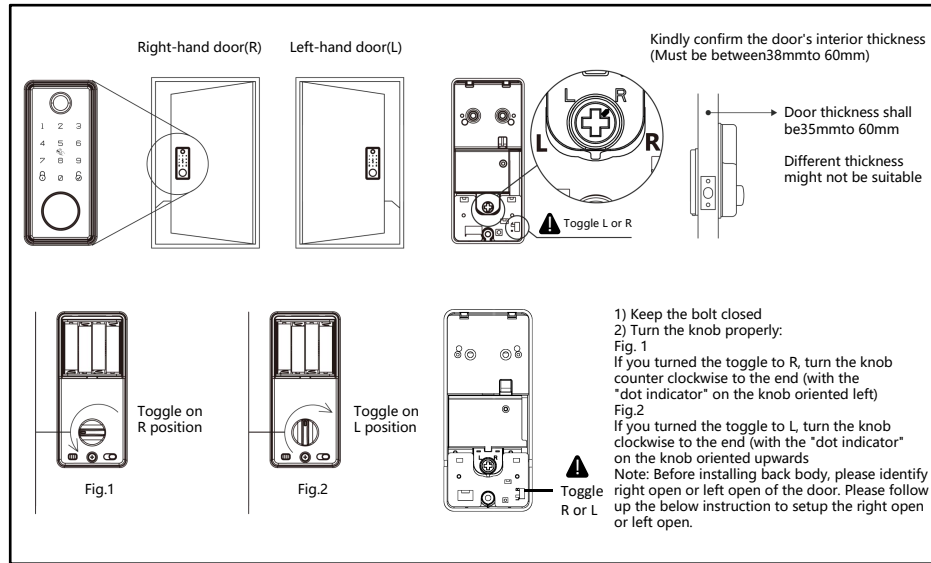
★ AU specifications are subject to change without notice. All rights reserved.

4. Installation Guide

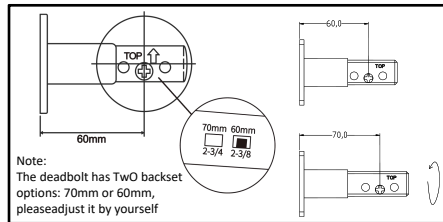


5. Note!

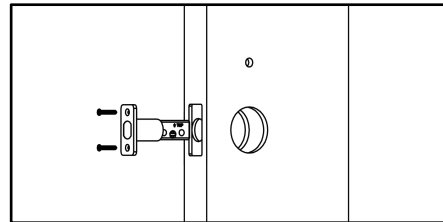
Check the door's opening direction: if the front body is fastened on the left, turn the toggle button to the L, and if it is fastened on the right, turn it to the R. Make sure the thumb turn towards according to your opening direction



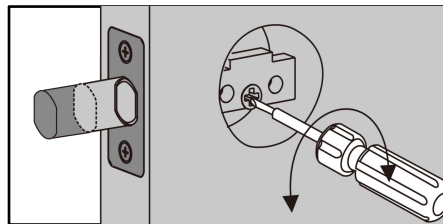
6. Deadbolt Installation



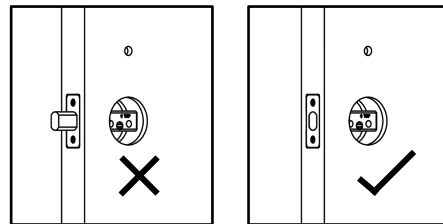
1. Adjust the length of the bolt if it is required.



2. Install the deadbolt on the door.

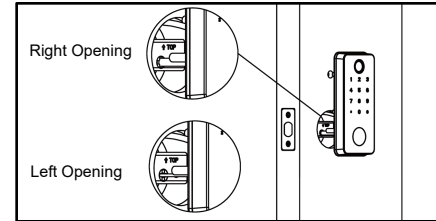


3. Use a screwdriver to test if deadbolt works smoothly.

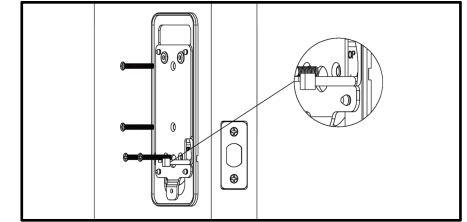


4. Make sure the bolt is in retracted (unlocked) position.
NOTE: The bolt must be in retracted (unlocked) position before installing the lockset.

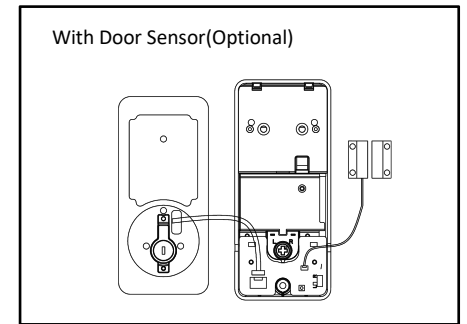
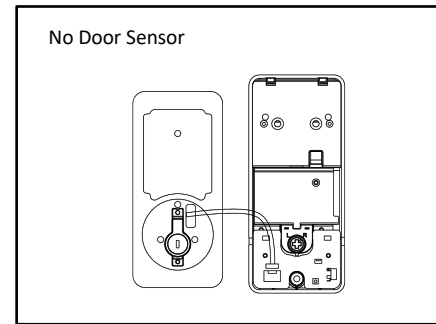
7. Lock Body Installation



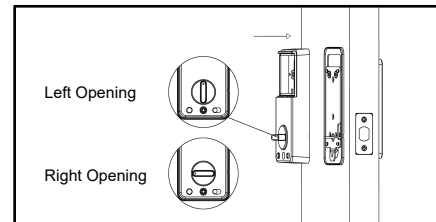
1. Hold the front body to the door, and make sure the key nail piece and cable through the door hole.



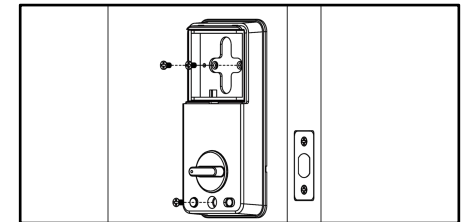
2. Make sure the cable through the mounting, the position the mounting plate, then fix the front body with three screws.



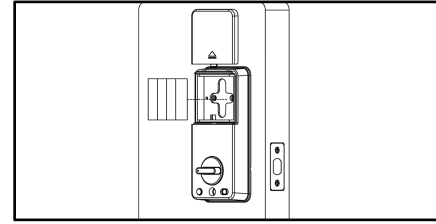
3. Insert the front body cable through the rectangular hole the rubber pod. Connect the wire connector from the front body through the hole to the back body. Ensure that the wire is installed properly and securely.



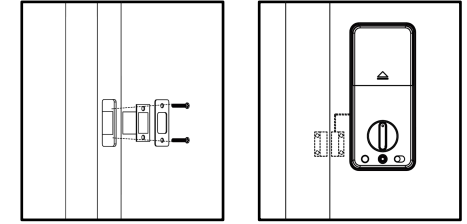
4. After connect the cables, make sure the thumb turn is vertical (Left opening) or horizontal (Right Opening) according to the door opening direction, then hold the back body onto mounting plate.



5. Fix the back body to the mounting plate with 3 screws.



6. Place the batteries, and make sure the direction of the batteries is correct, then put in the battery cover.



7. Drill the strike box and strike plate according to the strike plate and strike box size, then fix them by two screws.

8. If you want the lock automatically locked after close the door, please install the door switch sensor.

Intelligent lock(five in one) operation manual

1. Function and Operation

1.1 Description of terms and functional keys

1) Administrator information: refer to the Administrator's fingerprint, password or IC card. Unlock information: refer to the input fingerprint, password, Remote control or IC card information (including Administrator and ordinary users).

2) Key "⌂" : clear key/back key. Enter the password or point by clearing the previous input. Press the clear key three times in succession, empty all input.

3) Key "⏏" : confirmation key or menu function key.

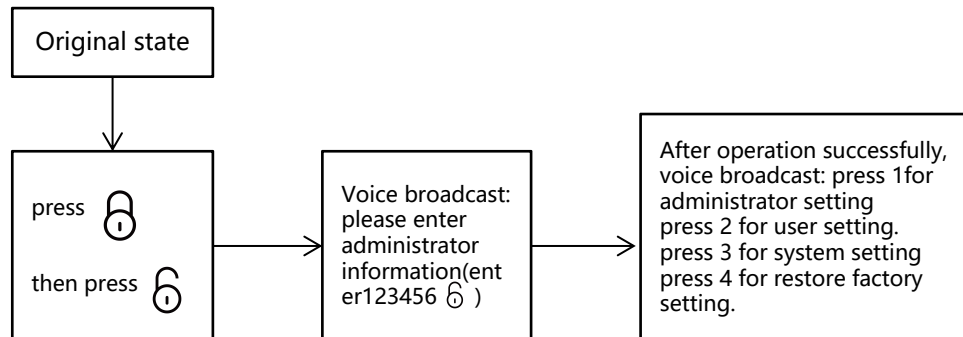
2. Original state

1) The factory administrator or initial password is 123456, under the or initial state any fingerprint.

IC card or password can open the lock.

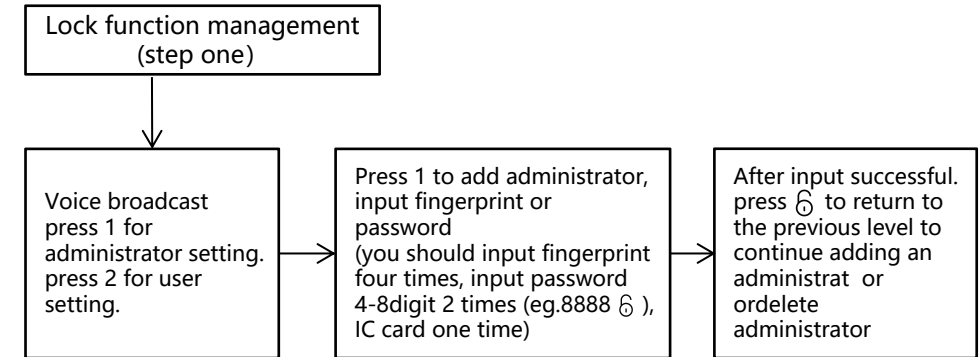
2) Any fingerprint, IC card, or password which are not registered can't open the lock after inputting the administrator information.

3. Lock function management (step one)

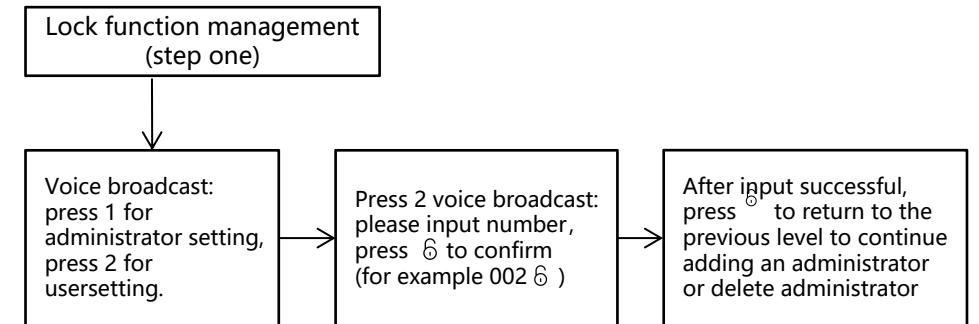


4. Administrator settings

1) Add administrator (step 2)

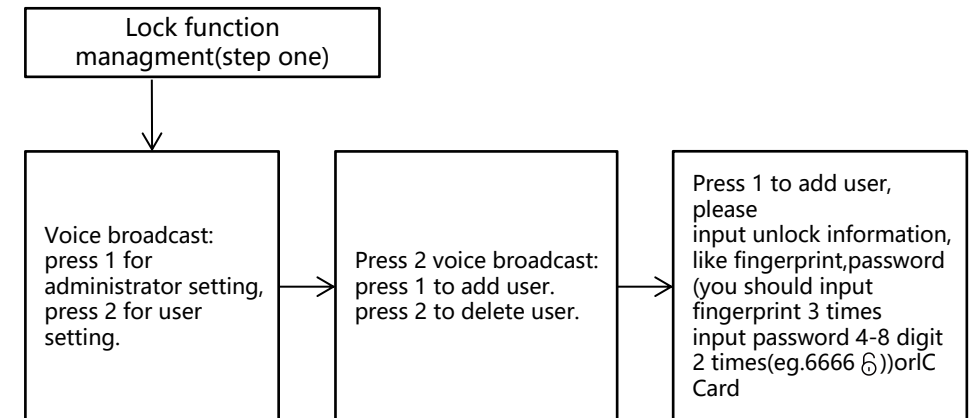


2) Add administrator information

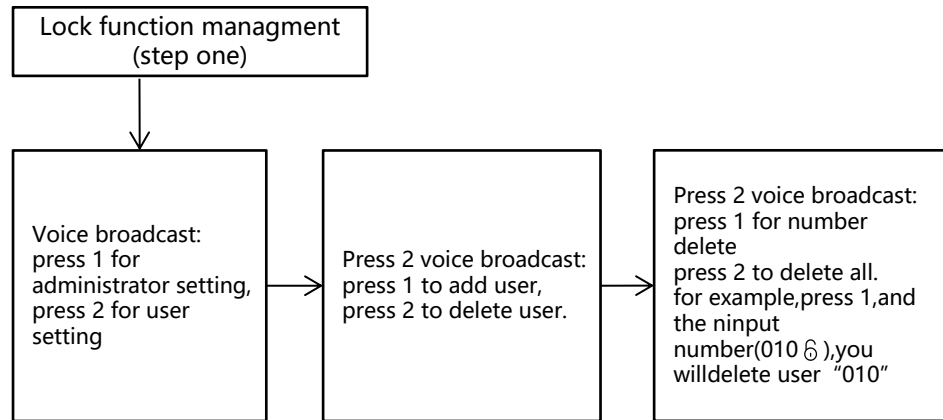


5. Common user setting

1) Add administrator information

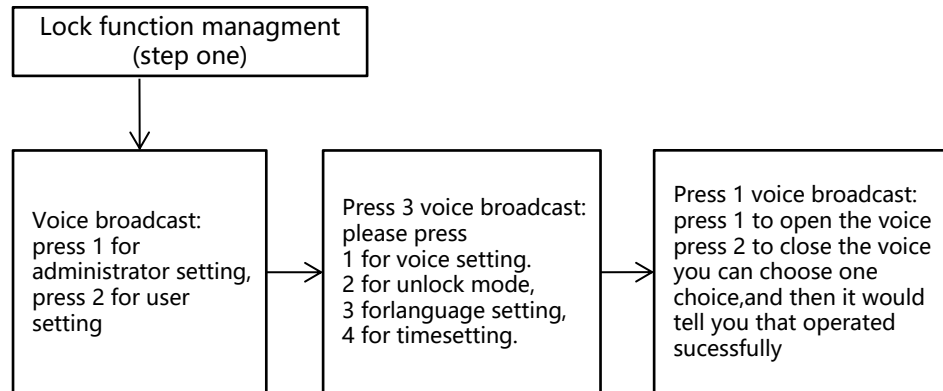


2) Delete user information

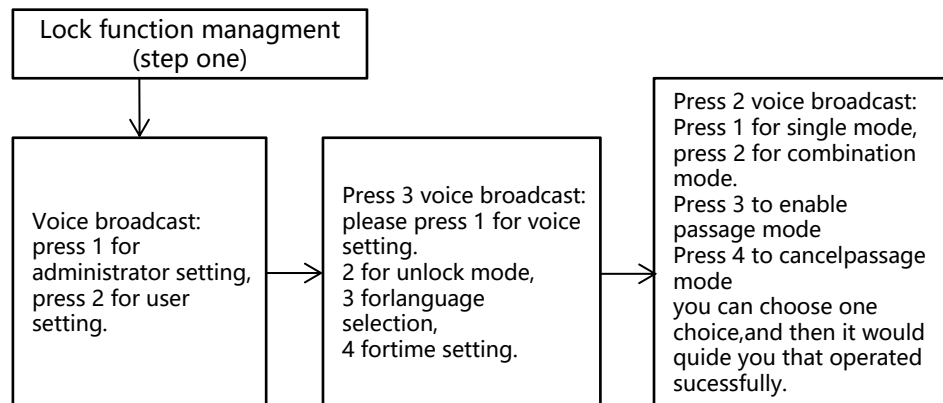


6. system setting

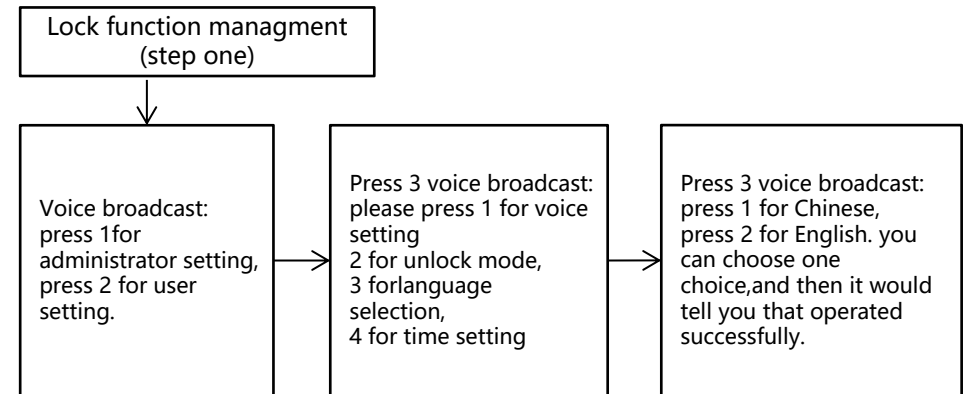
1) Voice setting



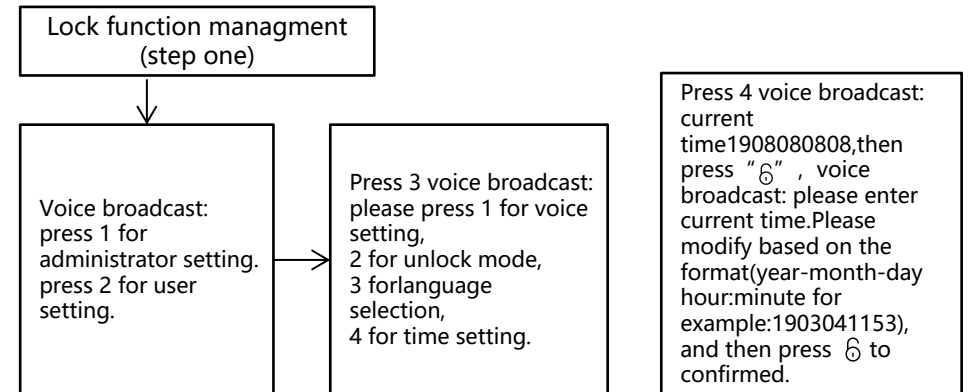
2) Unlock mode setting



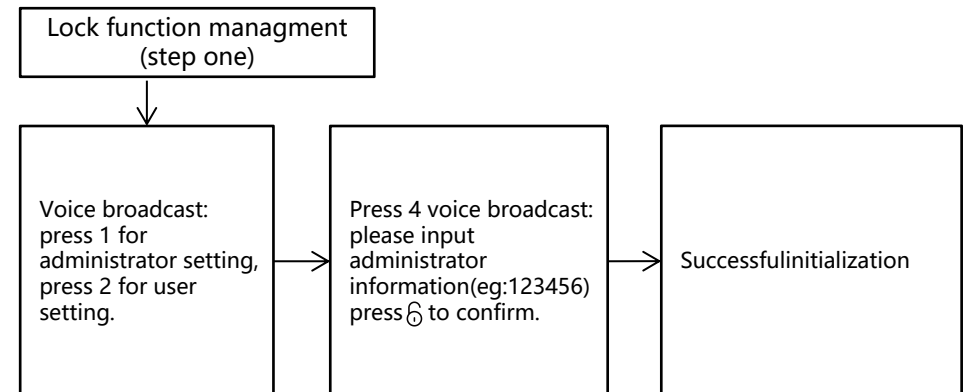
3) Language settings



4) Time setting



7. Restore factory settings



8. APP Configuration (Tuya Smart)

- 1) Search "Tuya Smart" in App Store or an App market, download and install it.
- 2) Register with your cellphone number and log in.
- 3) Click "Security & Sensor", find "Lock(Wi-Fi)", click and add a device following instructions before use.



- 4) Remote unlocking: wake up the screen and press "9" + "6". There will be a voice prompt: requesting remote unlocking.

Add one network

- 1) Press "6" + "6" to authenticate administrator identity and then press "1" to access administrator settings. Then there will be a voice prompt of pressing "3" for network configuration.
- 2) Voice prompt in network configuration mode: press "1" for hotspot connection and "2" for intelligent connection.
- 3) When the network is successfully added, the 1st, 2nd, 3rd and 4th lights on the keyboard will be on in order with a voice prompt of "operation completed".
- 4) In the event of network addition failure, the 1st, 2nd, 3rd and 4th lights on the keyboard will not be on and there will be a voice prompt of "operation failed" upon timeout.

Notice:

1. Please add administrator before setting.

9. Other notes

- 1) Under factory default, input 369 6 or 147 6 to change handle direction
- 2) Press the lock key can lock the lock automatically
- 3) Input the wrong password more than 5 times in a row, the keyboard locked for 30 seconds, it does not respond to any operations in 30 seconds.
- 4) Password peeping prevention function: input password as follows when opening the door with password: XXX password XXX; you can add some extraneous codes before and after the password, and then press fi to confirm. The password must be included in the input contents.
- 5) If there is no operation more than 10 seconds, system will automatically exit.
- 6) After the voltage is lower than 4.6v, the lock will automatically alarm every time when it is opened. After the alarm, the lock can be opened for about 200 times.
- 7) Remove the battery cover, press the "Set" key for 6 seconds. the lock was restored to factory mode;
- 8) In factory mode, input "3336669996 6" can change the language quickly;
- 9) When unlocking input "56" to enter passage mode (One time effective);
- 10) When unlocking input " 6 " to broadcast the user number;

10. Technical Parameters

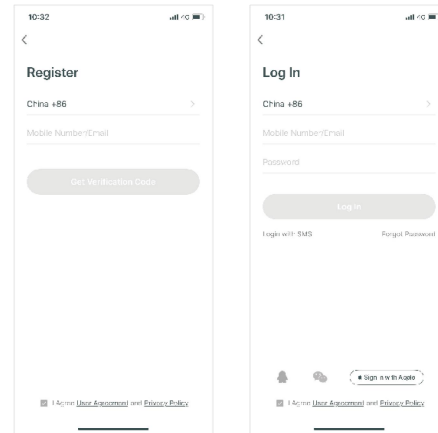
Technical Parameters			
	Items	Parameters	Memo
1	Static current	≤50uA	
2	Dynamic current	≤500mA	
3	Administrators number	9	
4	Fingerprint number	100	
5	Fingerprint + password + card capacity	200	
6	Fingerprint Sensor	Semiconductor	
7	Fingerprint contrast time	≤0.6Second	
8	Fingerprint identification Angle	360°	
9	False Rejection Rate	≤0.1%	
10	False Recognition Rate	≤0.0001%	
11	Reaction time	≤0.1 Second	
12	Power type	6V	
13	Emergency power	5VDC	
14	Working temperature	-25°C~60°C	
15	Working Relative Humidity	20%~90%RH	
16	Human voice	Yes	
17	Keyboard	Touch standard 12-bit keyboard	
18	Password Length	4-8 digits	
19	Phantom password	32 digits	
20	Low voltage alarm	4.6±0.2V	
21	Unlock time	≤1 Second	



MAIN FUNCTION MODULES

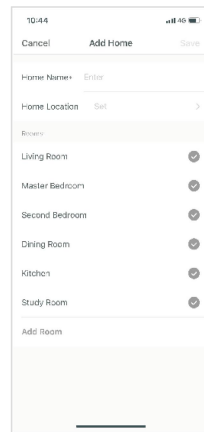
LAPP REGISTRATION AND LOGIN

- APP registration: if you do not have an APP account, you can choose to register or log in by SMS verification code.
- Click "create a new account" to enter the account registration page. According to the prompt to obtain SMS verification code, set the password.
- If you have an existing account, click "login with an existing account" to log in to the APP. Password, verification code, and social account login are supported.



2. CREATE HOMES

- Create your home after registering and logging in successfully.
- Each account can create and add multiple homes, and devices can be grouped by room in the home.
- Weather and other functions depend on the geographical location of the family, which is recommended to set in advance.



3. ADD WIFI LOCK

- On the Tab of "my home", click "+" in the upper right corner to enter the interface in figure 1, select the WiFi door lock in security sensor part and enter the page in figure 2.
- When the device enters the connected mode, continue to operate according to the instructions and APP tips.



FIGURE 1

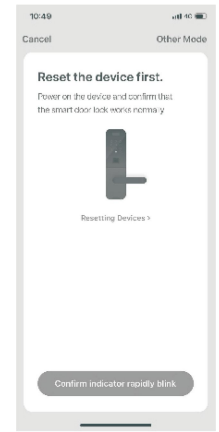
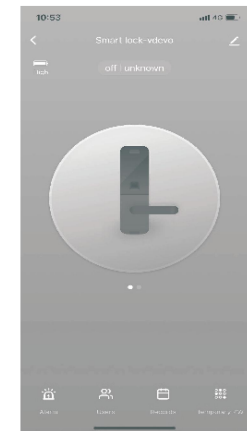


FIGURE 2

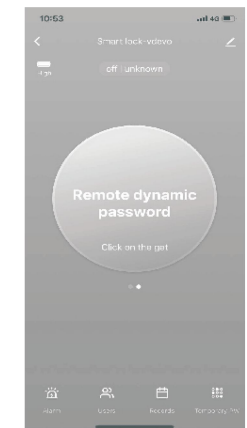
4. HOME PAGE

- Home page includes remote unlock, alarm message, member management, record, temporary password and other functions.
- Remote Unlock: initiate a request from the door lock, and the app can respond to allow / refusal door opening



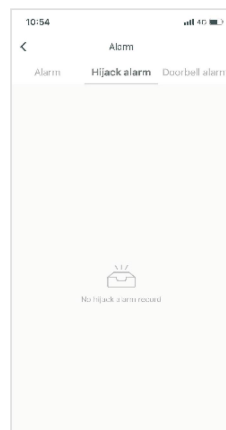
5. DYNAMIC PASSWORD

- Click to get the dynamic password. Meanwhile copy the password text for you



6. MESSAGE CENTER

- Message center contains alarm information, doorbell call information and hijacking alarm information, which can be inquired.



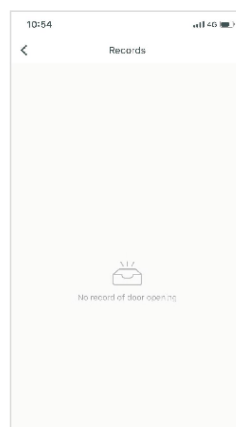
7. USER MANAGEMENT

- User can be added, deleted or changed in member management.
- Only the administrator user of app is allowed to do that.



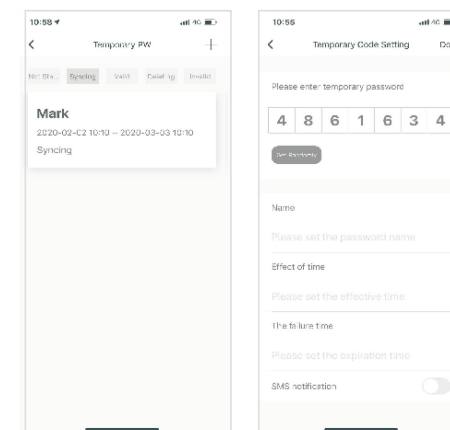
8. RECORD LOG

- 24/7 Record Log, arranged in reverse chronological order. The unlocked ID with the associated user name will directly display the user name, while the unlocked ID without the associated name will display the specific unlock ID



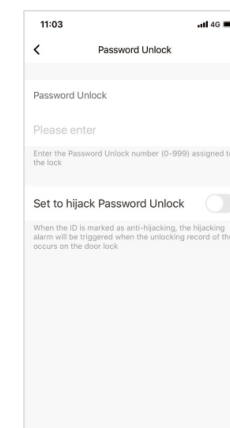
9. TEMPORARY PASSWORD

- Temporary password can be created and deleted through app. After each create or delete is completed on the app, the lock hardware is required to synchronize with the server.
- At the time of creation, you can choose whether to send SMS or not. Worldwide SMS is supported.



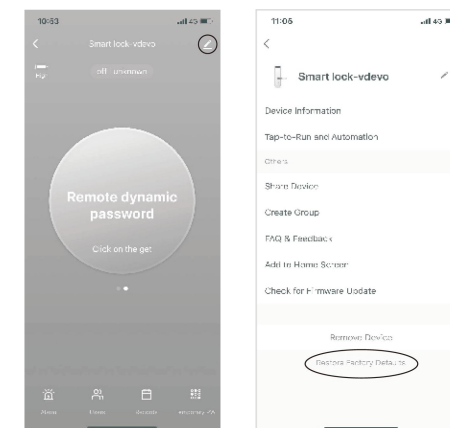
10. HIJACKING ALARM

- When the anti-hijacking mark in the left picture is opened, if the unlock action of the unlock ID occurs, the record will report and the app will trigger the anti-hijacking alarm



11. FACTORY DATA RESET

- Click the icon in the upper right corner of the main interface. Find the Factory Data Reset and click.
- The Factory Data Reset can also be operated on the lock. Please refer to the instruction manual for details.



FCC WARNING

This device complies with part 15 of the FCC Rules. Operation is subject to the following two conditions: (1) this device may not cause harmful interference, and (2) this device must accept any interference received, including interference that may cause undesired operation.

Any changes or modifications not expressly approved by the party responsible for compliance could void the user's authority to operate the equipment.

NOTE: This equipment has been tested and found to comply with the limits for a Class B digital device, pursuant to Part 15 of the FCC Rules. These limits are designed to provide reasonable protection against harmful interference in a residential installation. This equipment generates, uses and can radiate radio frequency energy and, if not installed and used in accordance with the instructions, may cause harmful interference to radio communications.

However, there is no guarantee that interference will not occur in a particular installation. If this equipment does cause harmful interference to radio or television reception, which can be determined by turning the equipment off and on, the user is encouraged to try to correct the interference by one or more of the following measures:

- Reorient or relocate the receiving antenna.
- Increase the separation between the equipment and receiver.
- Connect the equipment into an outlet on a circuit different from that to which the receiver is connected.
- Consult the dealer or an experienced radio/TV technician for help.

To maintain compliance with FCC's RF Exposure guidelines, This equipment should be installed and operated with minimum 20cm distance between the radiator and your body: Use only the supplied antenna.