



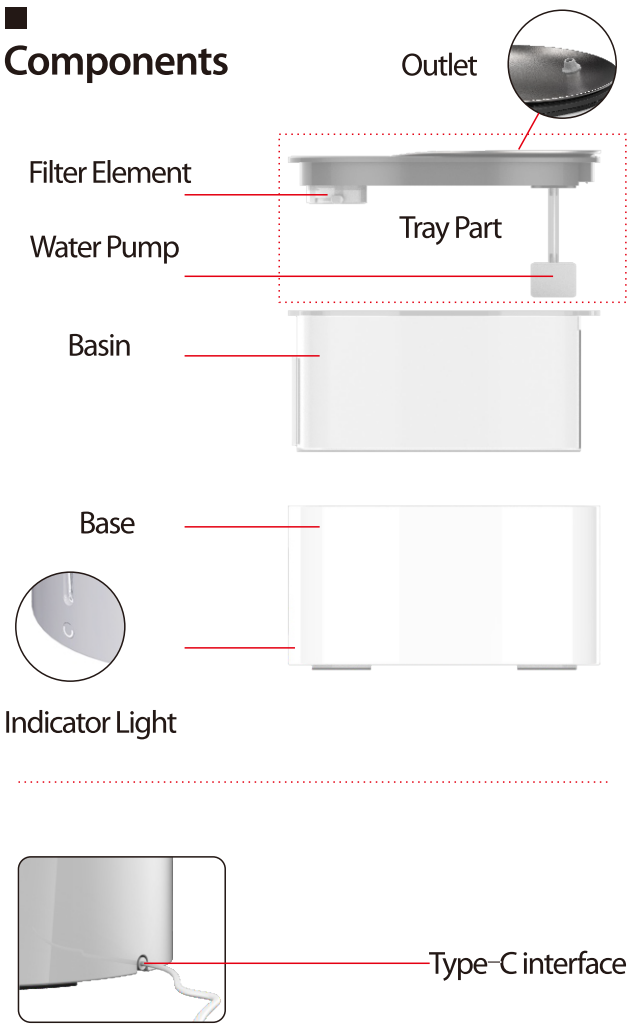
DOEL SMART PET FOUNTAIN











User Manual

Thanks for your purchase from DOEL Pet. For best performance and safety purpose, please read this manual carefully before using the product. Please keep this manual for further reference.

Components



Specification

 Input 5V==1A	 Power 5w	 Capacity 2.3L	 Size 202*256*150mm
 Weight 1.5kg	 Working humidity 10%-80%RH	 Operating temperature 0-50 °C	 Packing List Water fountain Type-C cable User manual

Inportant

1. If the network fails to be configured, please power off the device and reinsert it. After a while, hold down the button for 5S to enter the network configuration state, and make sure that your current WiFi is 2.4g and close to the WiFi device.
2. Do not put the base body into water when cleaning the base containing electronic components. If there is water in the conductive base, please dry it in time.
3. It is recommended to clean up the product at least once a week (including the basin, filter, filter element, pump, pump filter cotton), and thoroughly change the water to prevent dirt blockage, poor water quality or poor water outlet and other problems.
4. This product is suitable for cats and small and medium-sized dogs.



Delivering Our Etemal Love

— 2 —

— 3 —

Installation Instructions



How to connect the network?

A. Download The App



Android: Go To Google Player And Search For Doelpet To Download
Ios: Go To The App Store And Search For Doelpet To Download

B. Log In To Register And Activate Your Account

Users register by email or third-party software. After registration, users will receive verification emails. Devices can be added only after verification is successful

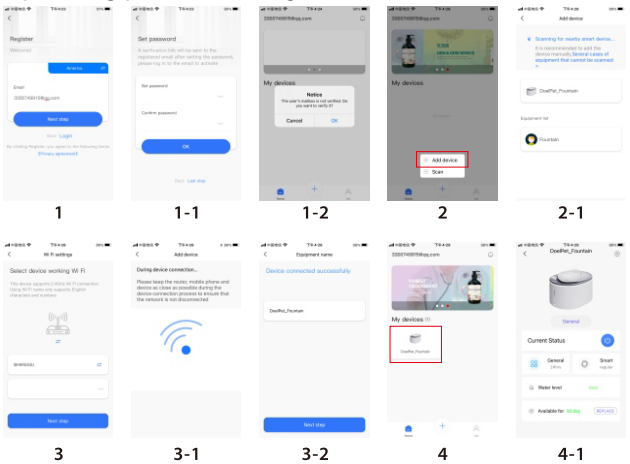
C. Add equipment

Click the "+" icon on the home page to search for nearby devices (long press the button for five seconds to enter the mode of network configuration), select the searched devices, and enter the WiFi connection settings. After the connection is successful, users can modify the device name and finally complete the network configuration.

D.

After the product is connected to the external network, use the app to perform more remote operations on the product

Operating procedure diagram



FCC Caution

This device complies with part 15 of the FCC Rules. Operation is subject to the following two conditions: (1) This device may not cause harmful interference, and (2) this device must accept any interference received, including interference that may cause undesired operation.

Any Changes or modifications not expressly approved by the party responsible for compliance could void the user's authority to operate the equipment.

Note: This equipment has been tested and found to comply with the limits for a Class B digital device, pursuant to part 15 of the FCC Rules. These limits are designed to provide reasonable protection against harmful interference in a residential installation. This equipment generates uses and can radiate radio frequency energy and, if not installed and used in accordance with the instructions, may cause harmful interference to radio communications. However, there is no guarantee that interference will not occur in a particular installation. If this equipment does cause harmful interference to radio or television reception, which can be determined by turning the equipment off and on, the user is encouraged to try to correct the interference by one or more of the following measures:

- Reorient or relocate the receiving antenna.
- Increase the separation between the equipment and receiver.
- Connect the equipment into an outlet on a circuit different from that to which the receiver is connected.
- Consult the dealer or an experienced radio/TV technician for help.

To maintain compliance with FCC's RF Exposure guidelines, This equipment should be installed and operated with minimum distance between 20cm the radiator your body: Use only the supplied antenna.

— 4 —

— 5 —



Delivering Our Etemal Love