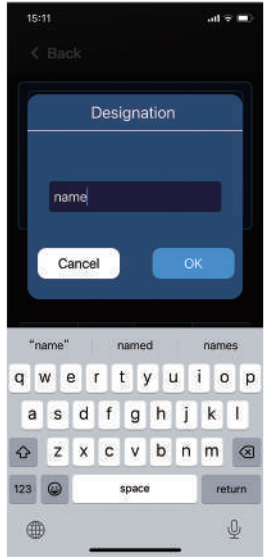
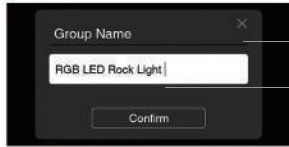


■ Control Mode Setting - Change Icon's Name



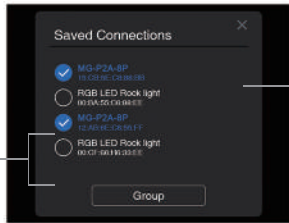
■ Edit Name



Cancel

Enter Name

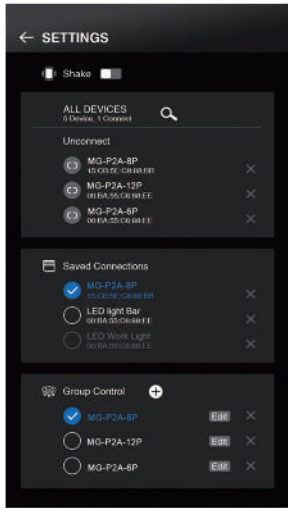
■ Groups



Cancel

Combine Singles
to Create Groups

■ Individual Control



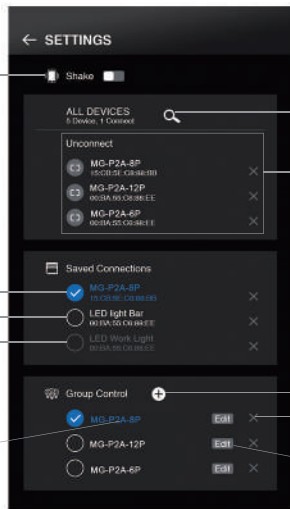
Choose a switch panel, return
home for setting and operation.

■ Group Control



Select 2 or more switch panels,
group them, then return home
for setting and operation.

■ Settings



Shake for
Random Color

Bluetooth
Search Device

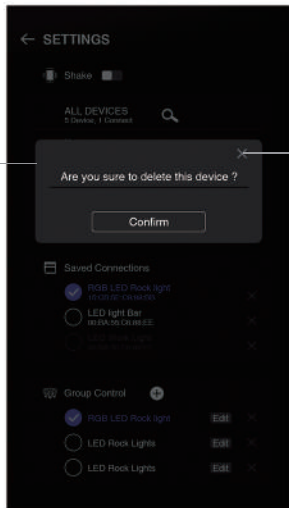
Bluetooth
Search Results

In Control
Online
Off-line

Manage Groups
Delete

Edit
(Return to
Group Control)

■ Delete



Delete Tip

Cancel

Reasons for Bluetooth Connection Failures

Situation 1 :

The Bluetooth device signal is not detectable within the app.

1. Verify the correct installation by checking the line fuse.
The indicator should be illuminated under normal power-on conditions.
2. Ensure that the search is conducted within a 15-meter radius of
the phone's wireless range in an open environment.
3. Confirm that the Bluetooth device is not currently paired with
other mobile phones. When connected to a device, its signal becomes
inaccessible to other phones.

Situation 2 :

The app has identified the Bluetooth signal but encounters
connection failure.

1. Connection requires app authorization; failure to authorize will
prevent successful connection.
2. For certain Android phones, the initial connection to the device
may require activating Bluetooth pairing in the general settings.
Once enabled, a normal connection can be established.

Mgroup Light App Instruction



APP Introduction

The Mgroup Light App supports BLE and SPP Bluetooth protocols. By connecting Bluetooth, you can easily set up and control your switch panels. Perfect for automotive and marine uses.

Mgroup Light App features default & DIY backlight modes, various backlight colors, 4 control modes and personalized icons etc, satisfying different needs and simplifying controls.

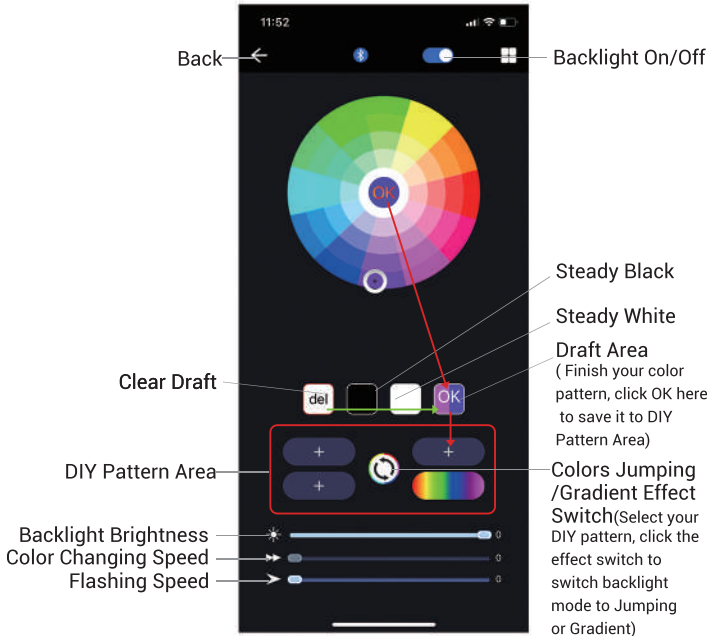


START ON

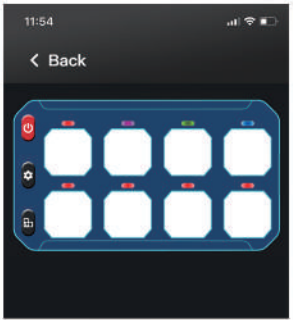
P1 Switch Panel Control & Setting



DIY



Indicator Color Meanings

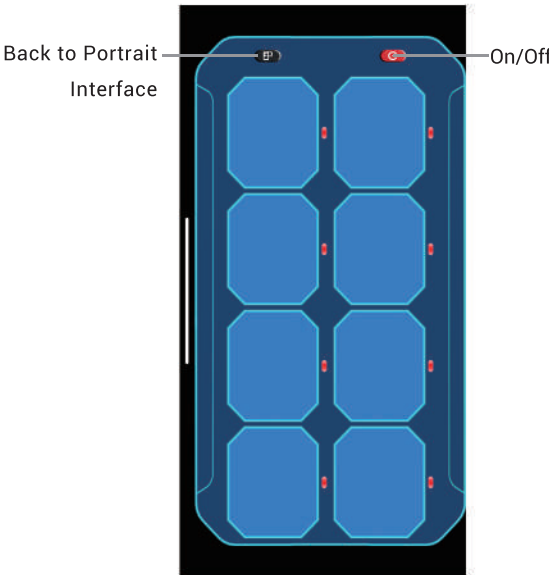


- Red - Constant Mode
- Blue - Momentary Mode
- Purple - Flash Mode
- Green - Strobe Mode

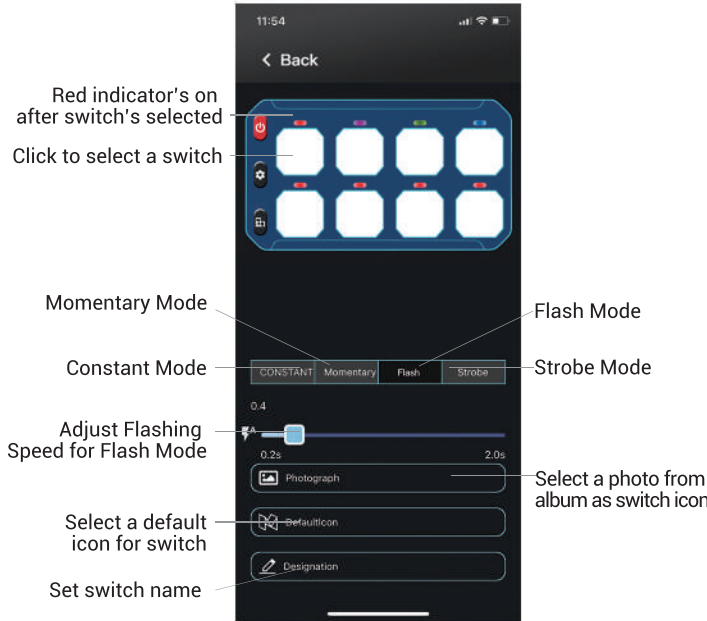
Home



P1 Landscape Interface



Control Mode Setting



Control Mode Setting - Change Icons



Scan to download
IOS APP



Scan to download
Google APP

FCC Caution.

(1) § 15.19 Labelling requirements.

This device complies with part 15 of the FCC Rules. Operation is subject to the following two conditions: (1) This device may not cause harmful interference, and (2) this device must accept any interference received, including interference that may cause undesired operation.

§ 15.21 Changes or modification warning

Any Changes or modifications not expressly approved by the party responsible for compliance could void the user's authority to operate the equipment.

§ 15.105 Information to the user.

Note: This equipment has been tested and found to comply with the limits for a Class B digital device, pursuant to part 15 of the FCC Rules. These limits are designed to provide reasonable protection against harmful interference in a residential installation. This equipment generates uses and can radiate radio frequency energy and, if not installed and used in accordance with the instructions, may cause harmful interference to radio communications. However, there is no guarantee that interference will not occur in a particular installation. If this equipment does cause harmful interference to radio or television reception, which can be determined by turning the equipment off and on, the user is encouraged to try to correct the interference by one or more of the following measures:

- Reorient or relocate the receiving antenna.

- Increase the separation between the equipment and receiver.

- Connect the equipment into an outlet on a circuit different from that to which the receiver is connected.

- Consult the dealer or an experienced radio/TV technician for help.

RF warning for Mobile device:

- This equipment complies with FCC radiation exposure limits set forth for an uncontrolled environment. This equipment should be installed and operated with minimum distance 20cm between the radiator & your body.