

---

## 产品规格书

### **PRODUCT SPECIFICATION**

Customer:

Customer's part number:

Product description: Internal 2.4G Antenna

Uni Link's part number: MS-2400-001

Issue Date: 2022-11-18

Note: 2400---2500 MHz

### **Application and Features**

Applications :

- 1: 2.4G
- 2: Public wireless hot spot
- 3: Wireless BT system

Features :

- 1: Weight is light
- 2: Installed for vertical or horizontal polarization
- 3: RoHS compliant

**Hong Tai Electronic Co. , Ltd.**

City 100 Building, No.4 Zhonghang Road, Huahang Community, Huaqiang North Street, Futian District, Shenzhen City 1C052A

---

# 目录 (CATALOGUE)

## I、概述 (OVERVIEW)

## II、天线特性 (ANTENNA CHARACTERISTICS)

## III、测试 (TEST)

## IV、参数 (PARAMETERS)

A. 回损数据 (RETURN LOSS DATA)

B. 驻波 (VSWR)

C. SMITH 表格 (SMITH CHART)

D. 增益数据 (GAIN DATA)

E. 效率数据 (EFFICIENCY DATA)

F. 辐射方向数据 (RADIATION PATTERN DATA)

## V、工程图 (DRAWING)

## II、概述（OVERVIEW）

This internal 2.4GHz Antenna works on WiFi, ZigBee, Bluetooth and ISM band. This antenna has been designed with a specific characteristic of having a ground coupling effect in between the antenna and the device's board, suitable for those devices where there is no clearance in between the enclosure and the board, keeping the antenna performance. The Antenna can be placed above or below of the device's board, but leaving the radiated elements of the antenna free of metal. This design can work on different thickness and plastic materials. We have selected a piece of ABS plastic with 1.5 mm of thickness for testing.

## II、天线特性（ANTENNA CHARACTERISTICS）

电性能指标 Electrical Specifications	
频率范围 Frequency Range (MHz)	Bluetooth :2400-2500
频带宽度 Bandwidth (MHz)	83
输入阻抗 Input Impedence ( $\Omega$ )	50
电压驻波比 V.S.W.R	$\leq 1.5$
增益 Gain (dBi)	2.0
最大输入功率 Max Input Power (W)	3
机械指标 Mechanical Specifications	
天线长度 Antenna Length (mm)	24*8
电缆长度 Cable (mm)	60
连接器型号 Connect Type	
固定方式 Mounting	3M STICKER
外壳颜色 Radome Color	Red
重量 Weight (g)	2

### III、测试（TEST）

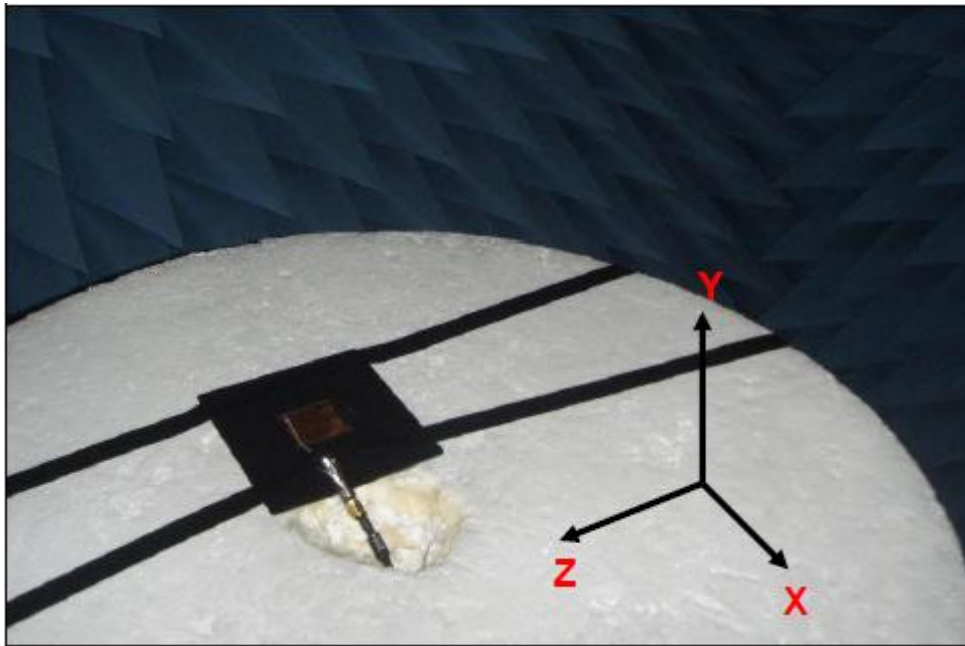


Figure 1 : TEST SYSTEM



Hong Tai Electronic Co. , Ltd.

City 100 Building, No.4 Zhonghang Road, Huahang Community, Huaqiang North Street, Futian District, Shenzhen City 1C052A

## E. 效率数据 (EFFICIENCY DATA)

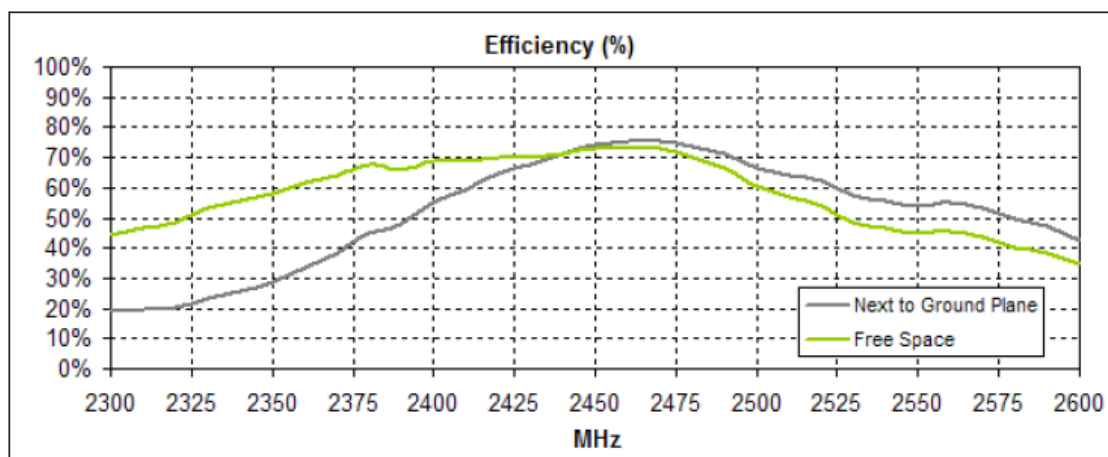


Figure 7. Efficiency data for Antenna

## F. 辐射方向数据 (RADIATION PATTERN DATA)

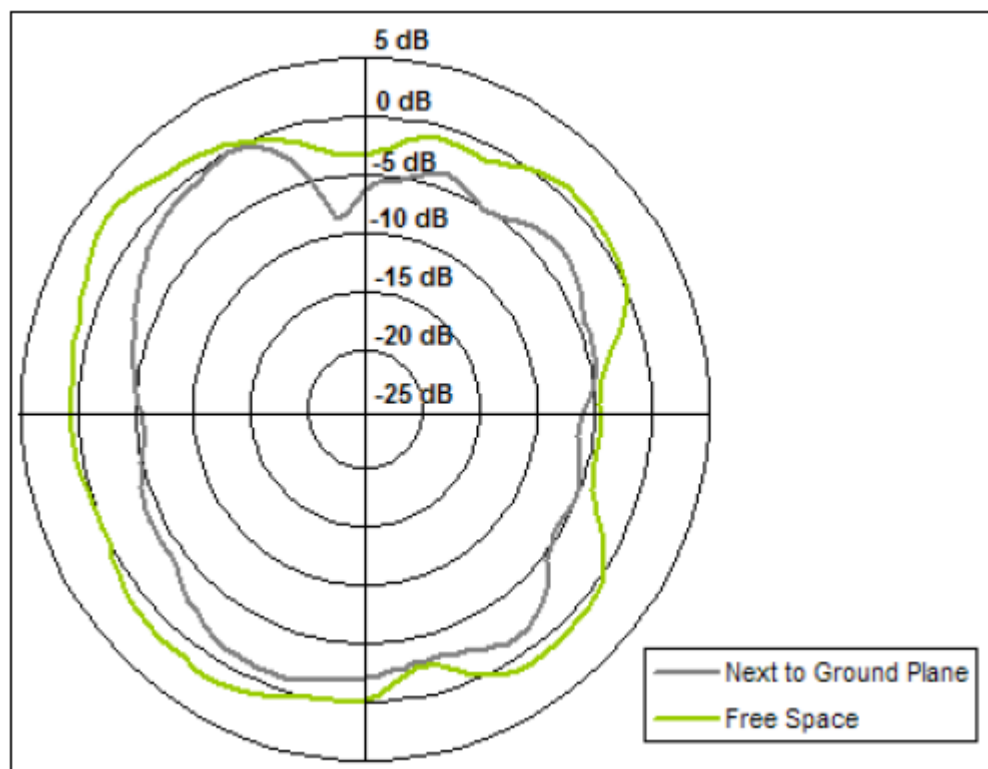
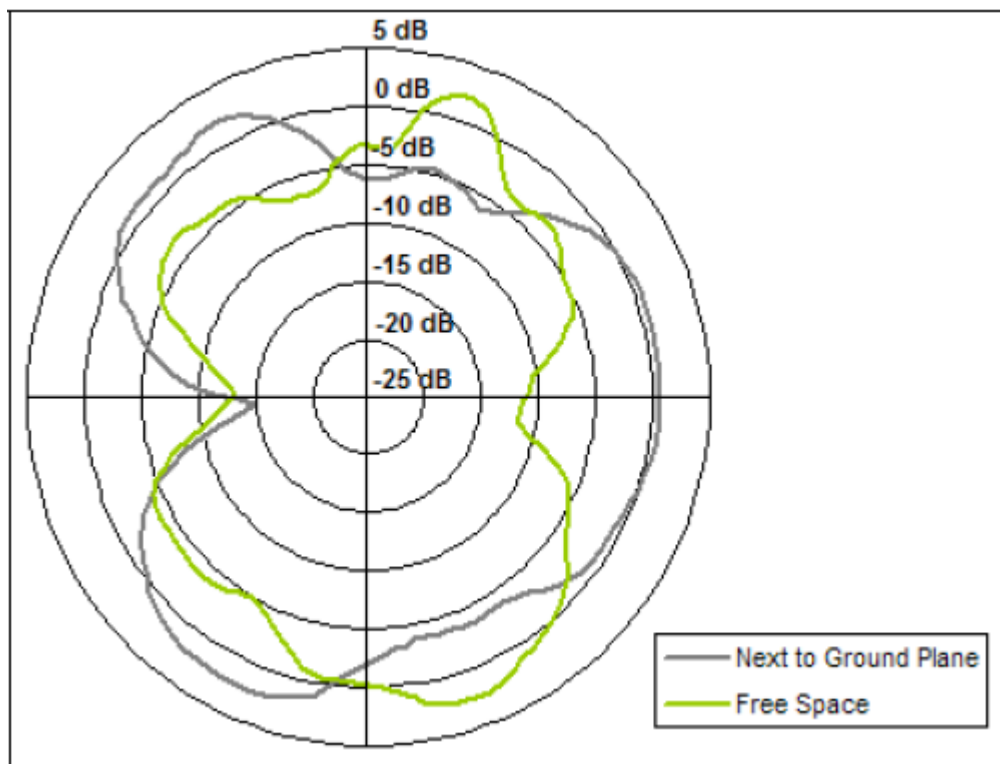
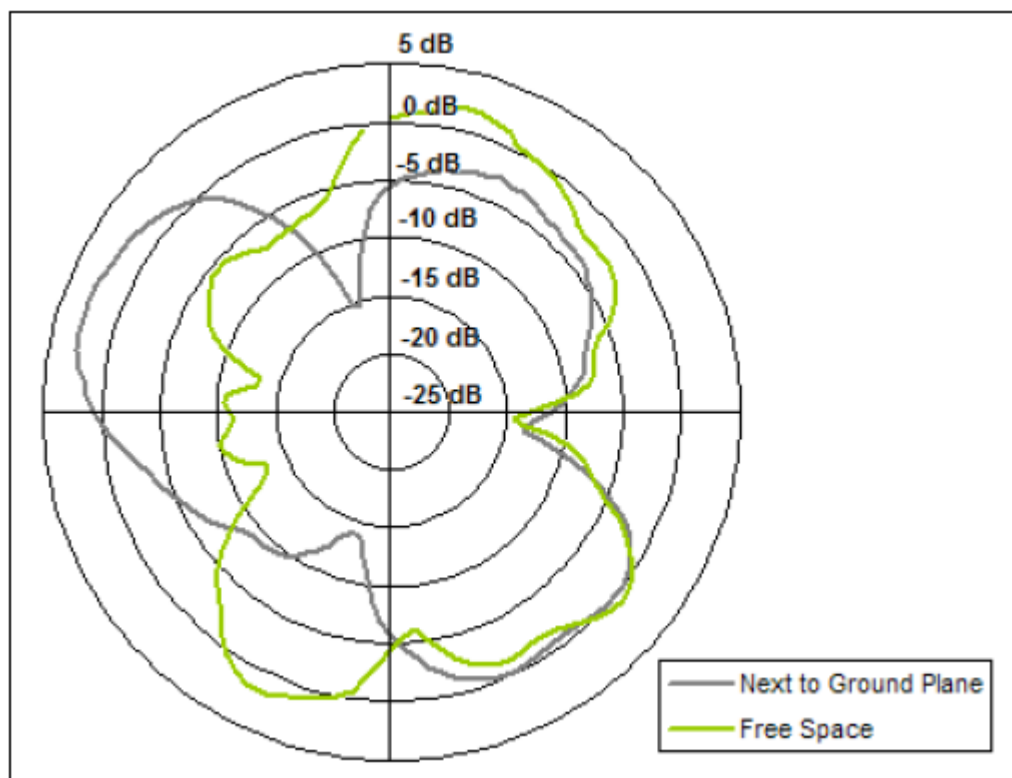


Figure 8. Radiation pattern data XZ for Antenna



**Figure 9.** Radiation pattern data XY for Antenna



**Figure 10.** Radiation pattern data YZ for Antenna

Hong Tai Electronic Co. , Ltd.

City 100 Building, No.4 Zhonghang Road, Huahang Community, Huaqiang North Street, Futian District, Shenzhen City 1C052A

V、工程图（DRAWING）

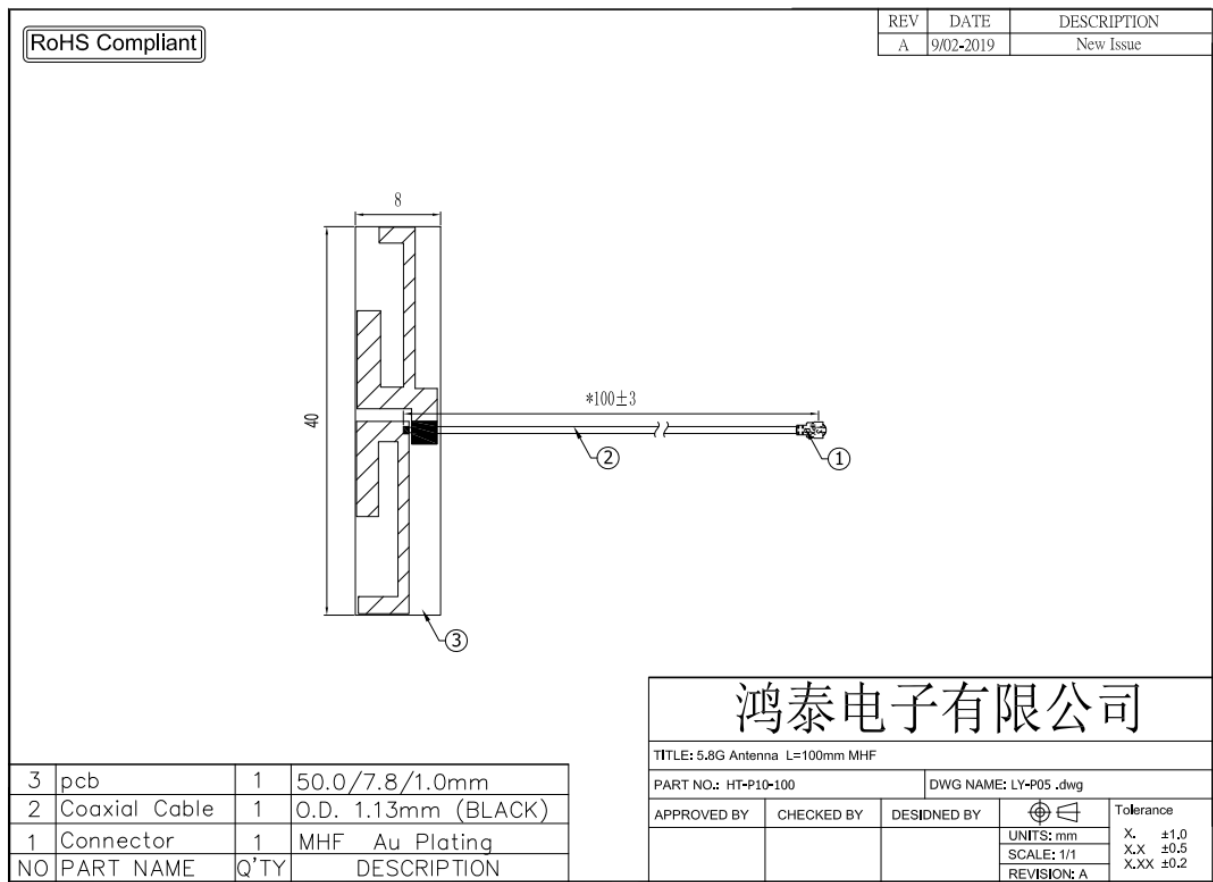


Figure 11. Drawing for Antenna