

Directory

Method of application	2
Use Android phones	2
APP Download	2
APP Usage Steps	3
Use an iPhone	5
APP Download	5
APP Usage Steps	5
The ST25R3911B NFC Board is used	8
Detailed steps	8

Method of application

We provide Android APP, Apple APP, and our ST25R3911B NFC Board to refresh the screen

【Note】 Because the communicating distance of NFC is short, to make the updating successful, please do not move the device when updating.

Use Android phones

Please make sure that your telephone supports the NFC function and is enabled. Note that this APP does NOT support this APP Samsung or Google phones.

APP Download

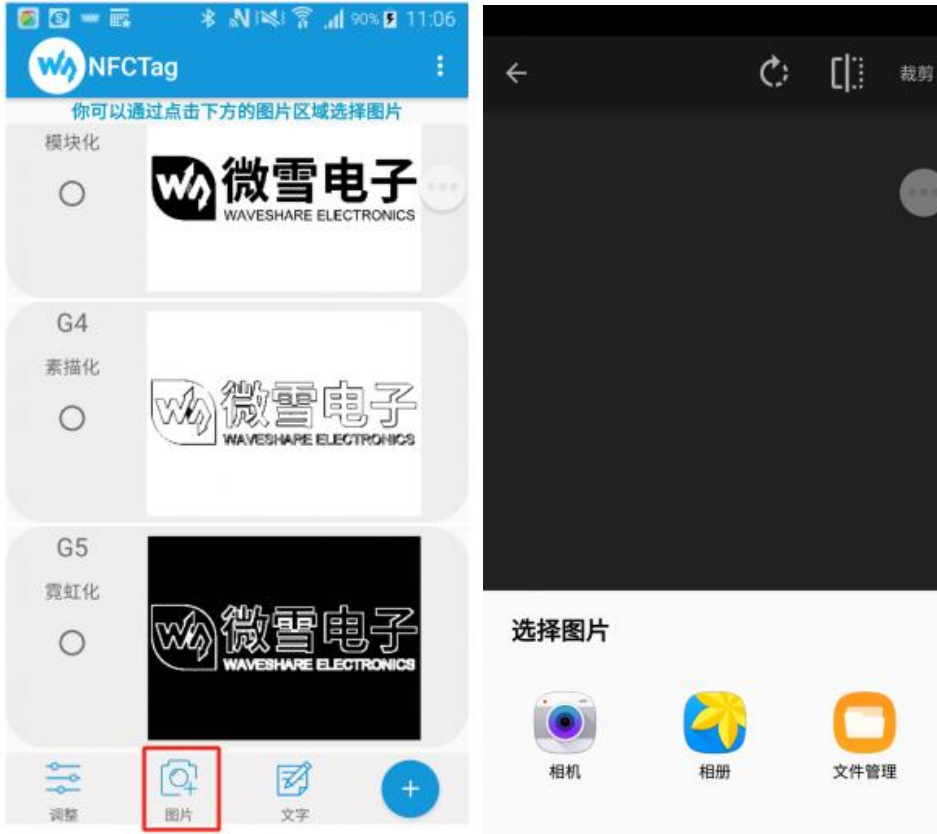
You can scan the QR code to download and install the APP on your phone, note that the app can only support Android 4.0 (Ice Cream Sandwich) and above.



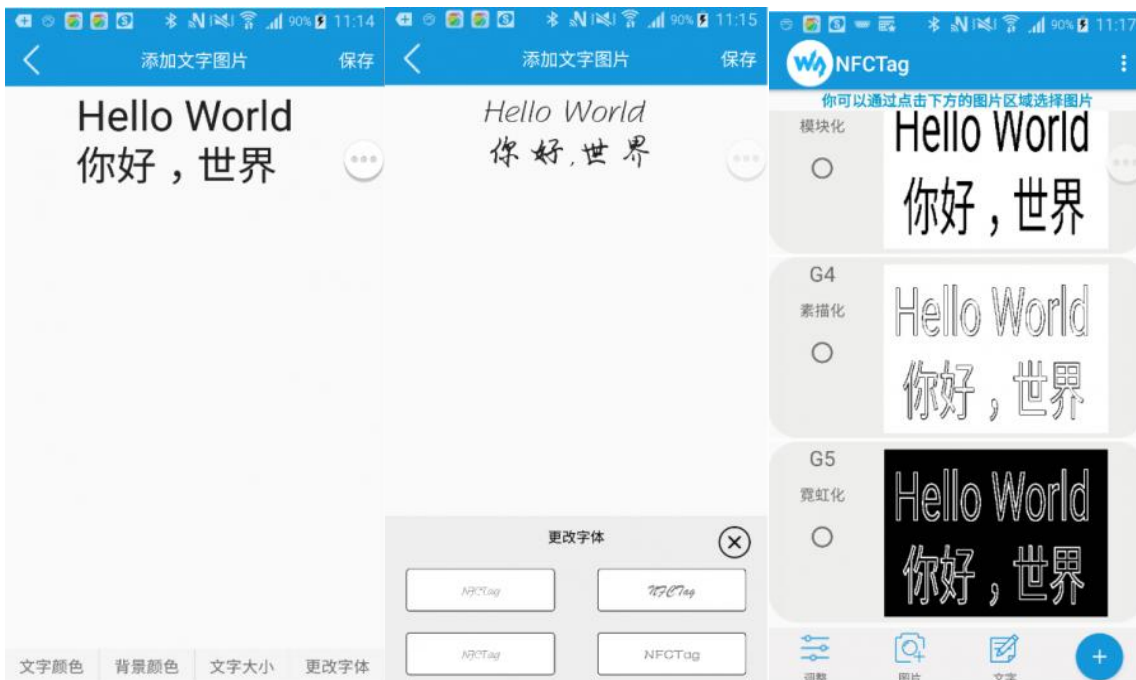
NFCTag APP EN

APP Usage Steps

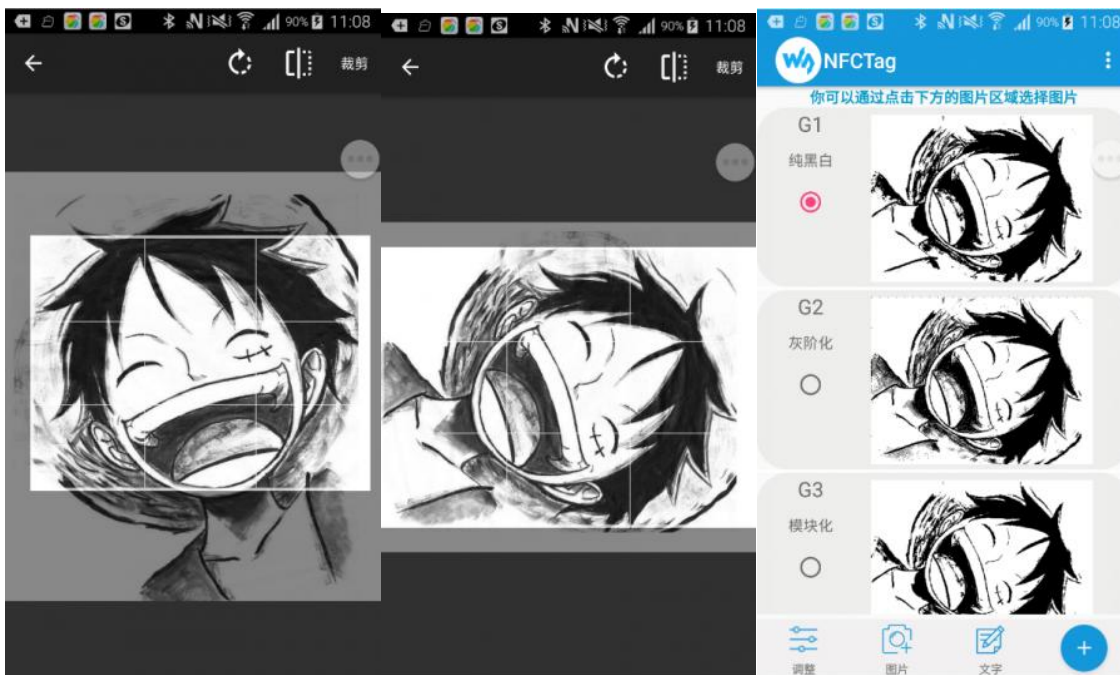
Click the picture button on the bottom to choose a picture. You can choose the picture from DCIM or you take a picture with the camera.



Except for pictures from DCIM and camera, you can also make string pictures manually.

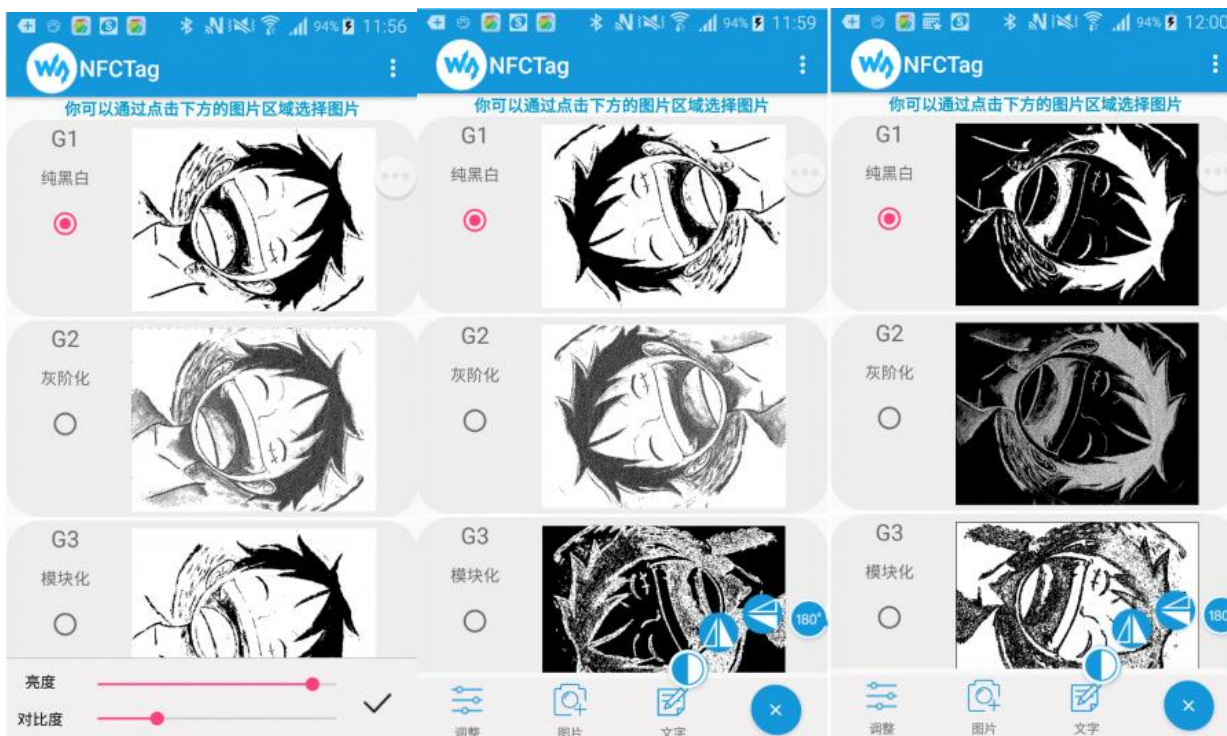


You can cut the picture after choosing, resize it and rotate it. For the best effect, we recommend you to pre-adjust the picture according to the resolution of the e-Paper.



On the main page, you can select the process effect (None Effect, Gray Effect, Block Effect, Sketch Effect, and Neon Effect).

On the main page, you can click the Adjust symbol on the left bottom to adjust the brightness and contrast. You can also touch the "+" symbol on the right bottom to adjust the picture.



Other functions

You can also draw a picture. Click the "... " symbol on the right top, choose Gallery, and touch one picture to enter drawing mode.



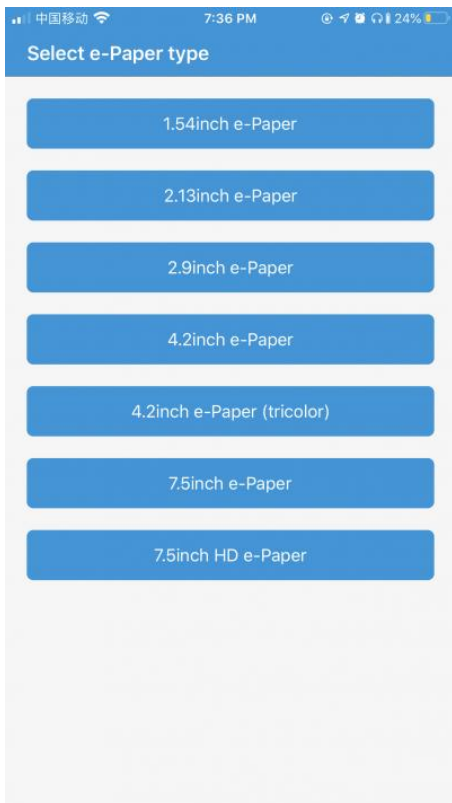
Use an iPhone

APP Download

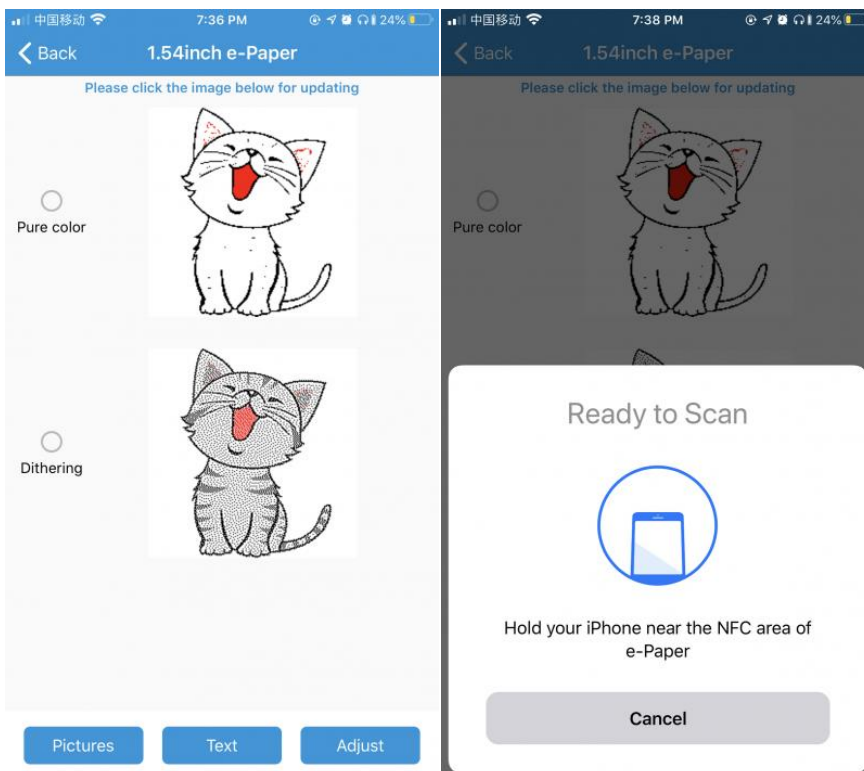
For IOS users, you can download and install the **NFC E-Tag** app from the APP store.

APP Usage Steps

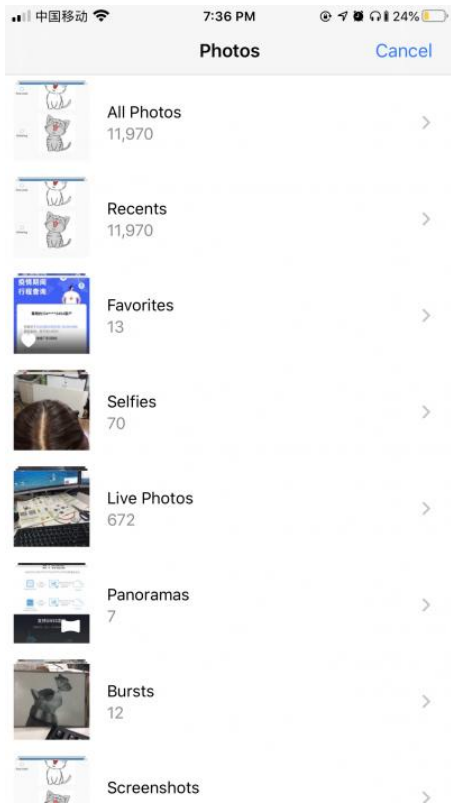
1. Open the APP, and choose the e-Paper type according to the actual display.



2. Click on the image and hold the phone close to the NFC area of the e-Paper for updating.



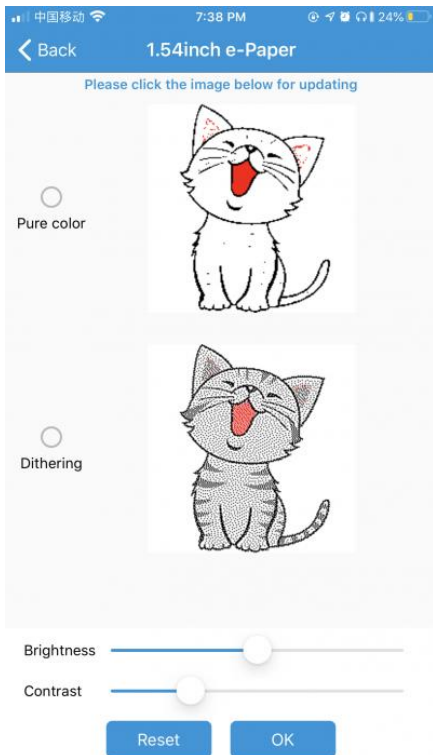
3. You can click the Pictures button on the left-bottom to choose the pictures to update.



4. You can click the Text buttons to make a text image.



5. You can adjust the brightness and contrast of the picture.

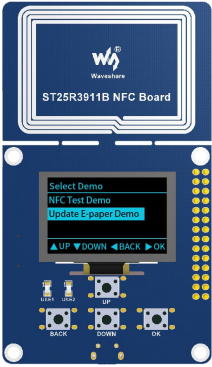


The ST25R3911B NFC Board is used

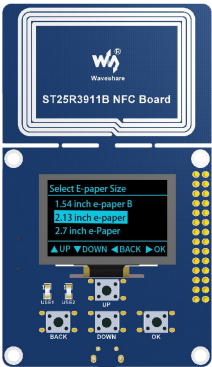
- Refer to the [Made bmp file for e-Paper](#) to make a picture for NFC-powered.
- Copy pictures to TF card (recommend 16G) and insert the TF card into ST25R3911B NFC Board.
- Connect the 5V power adapter to the USB interface of the NFC Board.
- Select the function by buttons, and choose "Update E-paper Demo".
 - Select the type of e-paper according to the one you have.
 - Select the picture for updating, note that the resolution of the picture should be the same as the e-Paper's.
 - Confirm it.
 - Put the Reader on the display for updating.
 - Wait for updates.

Detailed steps

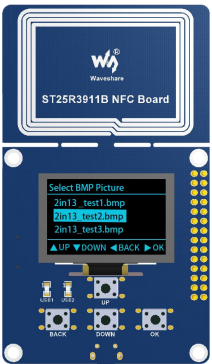
Select the codes



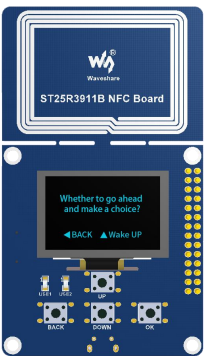
Select the display type



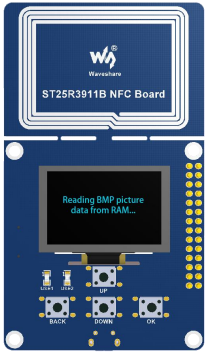
Choose a picture



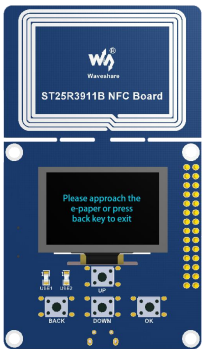
Confirm it



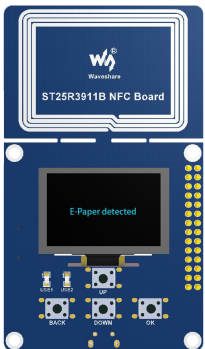
Read picture from TF card



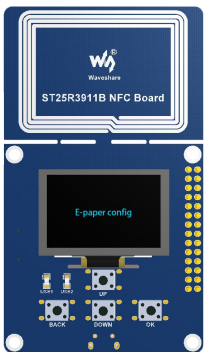
Put the NFC area to display



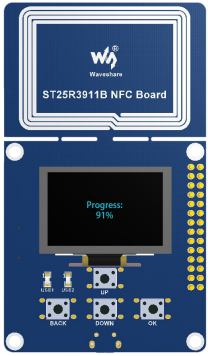
Detect the display



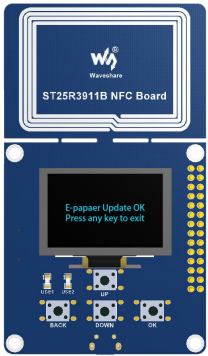
Configure the display



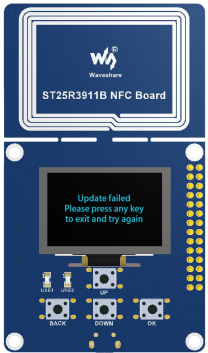
Updating



Update successfully and exit



If the display is updated failed, please put away the NFC read and try it again.



FCC Warning

This device complies with part 15 of the FCC Rules. Operation is subject to the following two conditions: (1) This device may not cause harmful interference, and (2) this device must accept any interference received, including interference that may cause undesired operation.

Any Changes or modifications not expressly approved by the party responsible for compliance could void the user's authority to operate the equipment.

Note: This equipment has been tested and found to comply with the limits for a Class B digital device, pursuant to part 15 of the FCC Rules. These limits are designed to provide reasonable protection against harmful interference in a residential installation. This equipment generates uses and can radiate radio frequency energy and, if not installed and used in accordance with the instructions, may cause harmful interference to radio communications. However, there is no guarantee that interference will not occur in a particular installation. If this equipment does cause harmful interference to radio or television reception, which can be determined by turning the equipment off and on, the user is encouraged to try to correct the interference by one or more of the following measures:

- Reorient or relocate the receiving antenna.
- Increase the separation between the equipment and receiver.
- Connect the equipment into an outlet on a circuit different from that to which the receiver is connected.
- Consult the dealer or an experienced radio/TV technician for help.

The device has been evaluated to meet general RF exposure requirement. The device can be used in portable exposure condition without restriction.