
	<p>2.4G device receiver function description</p>	<p>No: MR-2024080201 Version: V1</p>
---	--	--

Contents

- [1.](#) Introduction to buttons and functions.....2
- [2.](#) Device pairing.....3
 - 2.1 Direct connection (Pairing the receiver with the remote controller)3
 - 2.2 Repeater mode.....3

	2.4G device receiver function description	No: MR-2024080201 Version: V1
---	---	----------------------------------

1. Introduction to buttons and functions

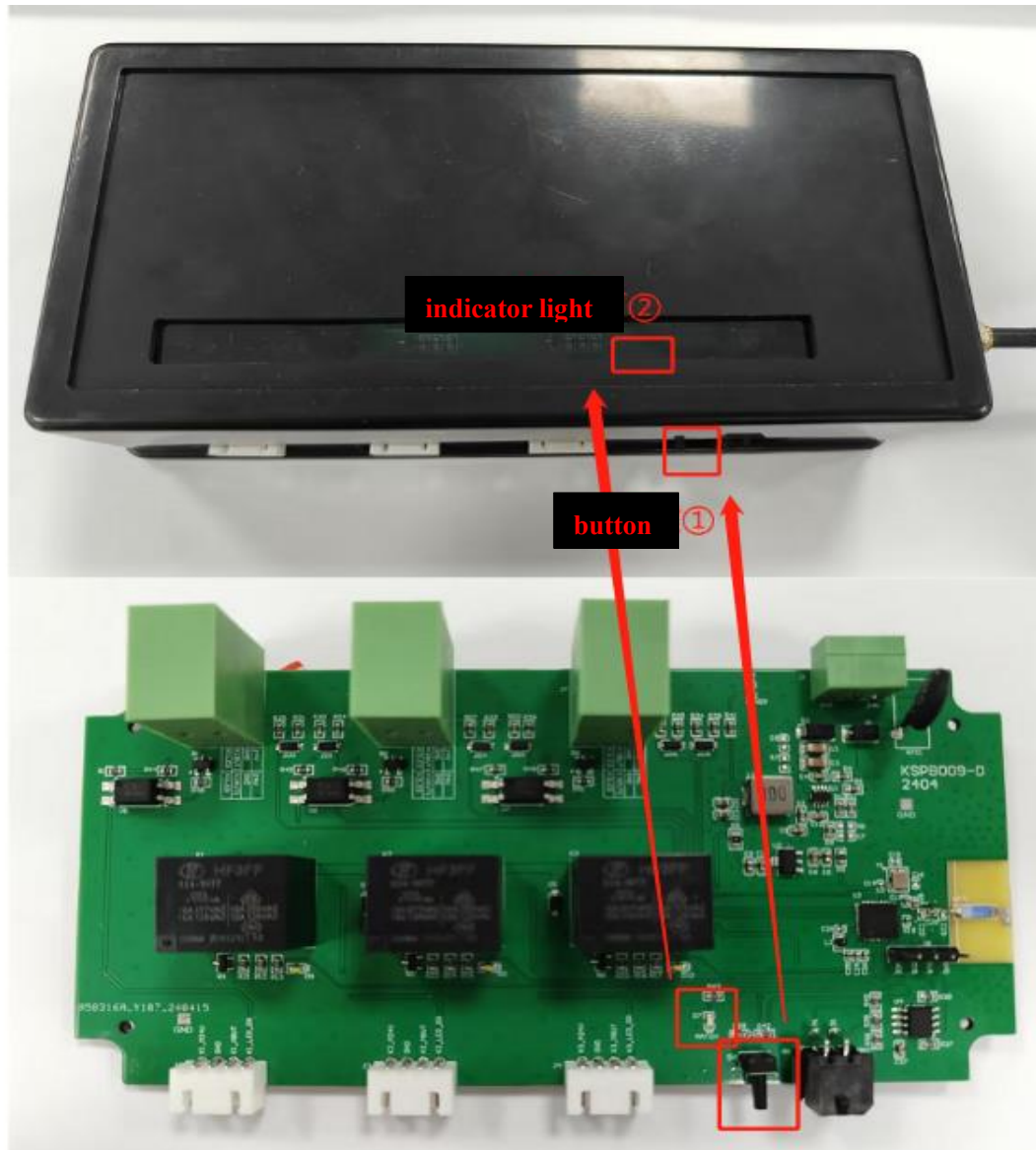



Figure 1: Receiver

Button:

① : Long press to enter the pairing mode; Short press to exit this mode;

Indicator light:

② : Pairing indicator light

	2.4G device receiver function description	No: MR-2024080201 Version: V1
---	--	----------------------------------

2. Device pairing

2.1 Direct connection

(Pairing the receiver with the remote controller)

Step 1: Long press the button on the receiver until the indicator light on the receiver flashes, and the receiver enters pairing mode;

Step 2: Simultaneously press and hold the buttons on the remote controller until the indicator light on the remote controller flashes, and the remote controller enters pairing mode;

Step 3: Continue to long press the buttons on the remote controller and wait until the indicator light on the remote controller flashes and the pairing is successful;

Step 4: Short press the button on the receiver and release the button on the remote controller to exit pairing. Press any button on the remote controller, the relay indicator light on the receiver stays on, the relays are working, and communication is normal;

2.2 Repeater mode

2.2.1 Connection between repeater and receiver

Step 1: Long press the button on the receiver until the indicator light on the receiver flashes, and the main controller board enters pairing mode;

Step 2: Long press the button on the repeater until the repeater indicator light flashes, and the repeater enters pairing mode with the receiver;

Step 3: Wait until the indicator light on the repeater flashes and the pairing is successful;


Step 4: Short press the buttons on the receiver and repeater to exit pairing, and the indicator light on the repeater will remain on. Communication is normal.

2.2.2 Connection between repeater and remote controller

Step 1: Long press the button on the repeater until the indicator light flashes, and the repeater enters pairing mode with the remote controller;

Step 2: Simultaneously press and hold the buttons on the remote controller until the indicator light on the remote controller flashes, and the remote controller enters pairing mode;

Step 3: Continue to long press the remote controller button and wait until

	2.4G device receiver function description	No: MR-2024080201 Version: V1
---	--	----------------------------------

the indicator light on the remote controller flashes and the pairing is successful;

Step 4: Short press the button on the repeater, release the button on the remote controller, and exit pairing. Press any button on the remote controller, and the indicator light on the relay will remain on, indicating normal communication.

Frequency Range: 2404MHz ~ 2480MHz

Number of Channels: 77 (at intervals of 1MHz)

Modulation Type: GFSK

Antenna Type: Ceramic Antenna

Antenna Gain: 2.66dBi

FCC Statement

This device complies with part 15 of the FCC rules. Operation is subject to the following two conditions: (1) this device

may not cause harmful interference, and (2) this device must accept any interference received, including interference

that may cause undesired operation.

Changes or modifications not expressly approved by the party responsible for compliance could void the user's authority to operate the equipment.

NOTE: This equipment has been tested and found to comply with the limits for a Class B digital device, pursuant to part 15 of the FCC Rules. These limits are designed to provide reasonable protection against harmful interference in a residential installation. This equipment generates uses and can radiate radio frequency energy and, if not installed and used in accordance with the instructions, may cause harmful interference to radio communications. However, there is no guarantee that interference will not occur in a particular installation. If this equipment does cause harmful interference to radio or television reception, which can be determined by turning the equipment off and on, the user is encouraged to try to correct the interference by one or more of the following measures:

- Reorient or relocate the receiving antenna.
- Increase the separation between the equipment and receiver.
- Connect the equipment into an outlet on a circuit different from that to which the receiver is connected.
- Consult the dealer or an experienced radio/TV technician for help.

Important Note:

Radiation Exposure Statement

This equipment complies with FCC radiation exposure limits set forth for an uncontrolled environment. This equipment should be installed and operated with minimum distance 20cm between the radiator and your body.

This transmitter must not be co-located or operating in conjunction with any other antenna or transmitter. Country Code selection feature to be disabled for products marketed to the US/Canada.