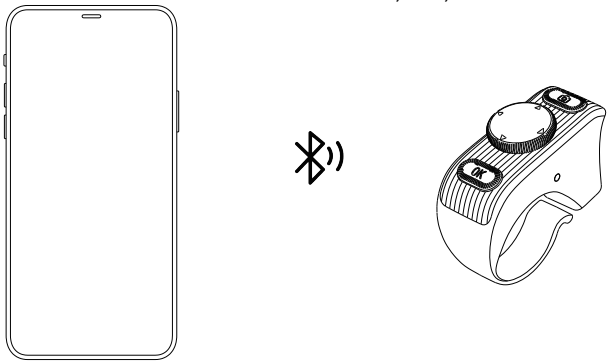


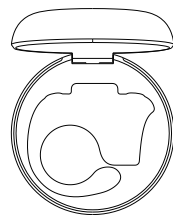
User Manual

PMN: Ring remote control
Modle/HVIN: R1, R2, R3

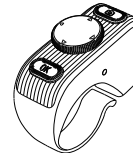


After-sales email: TKservice001@outlook.com

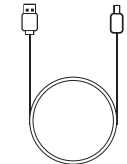
Packing list



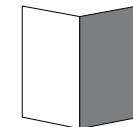
Charging case*1



Bluetooth ring*1








Type-C Cable*1



User Manual*1

Buttons function introduction

NO.	Buttons	Function	Operation	Notes
1		Power on	Take out the automatic start-up	Power off state
2		Power off	Return to auto shut down	Power on state
		Auto Power Off	Power on and unconnected state, automatically power off after 3 mins	Not connected state
3		Up/Flip up	Single click	
4		Down/Flip down	Single click	
5		Left/Flip left	Single click	
6		Right/Flip right	Single click	
7		Confirmation	Single click	

8	OK	Single like	Double click	
9	OK	Continuous likes	Long press 3S	
10	OK	Exit continuous likes	Long press 3S	In the continuous likes state
11	OK	Take photos	Single Click	
12	OK	Photo focus	Long press 3S	In the photo state
13	OK	Photo focus	Single click	In the photo state
14	OK	Volume +	Single Click	Not in the camera state
15	OK	Volume -	Double click	Not in the camera state
16	OK	Disconnect currently pairing	Press 2 buttons at the same time, red and blue lights flash alternately	Disconnect currently connected device
17	△	Horizontal screen switch	Long press 3S	Only supports horizontal orientation on one side

Light status introduction

Charging case

NO.	Lighting status	Function
1	Red light is always on	Put the ring on the charging cable, the charging case is charging
2	Light off	Fully charged
3	Red light flashes	Low battery
4	Blue light always on	Ring charging, Fully charged blue light off

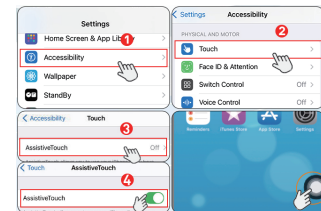
Ring

NO.	Lighting status	Function
1	Red and blue lights flashing	Pairing status
2	Red light flashes	Low battery
3	Red light is always on	Charging in the charging case
4	Blue light flashes once	Remote control operation once

Guides for Set-up

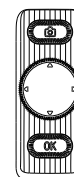
Step 1: iOS devices must first turn on AssistiveTouch (The iOS system version is higher than 14.8)

Settings>Accessibility>Touch>Turn on AssistiveTouch (Android phones do not have the dots)



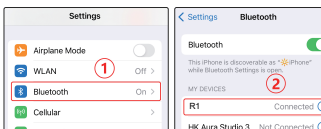
Step 1

Step 2: The ring automatically turns on when taken out of the charging case



Step 2

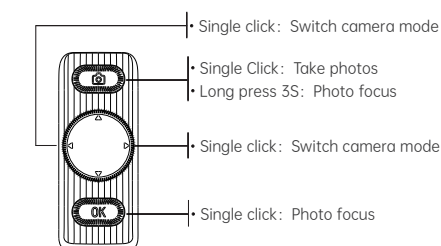
Step 3: Pair the Bluetooth "R1" (Lights off)



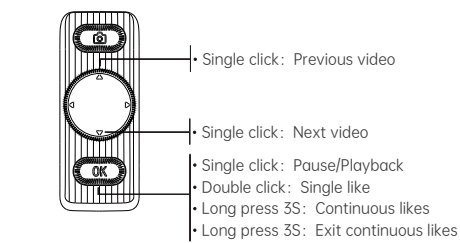
Step 3

Step 4: Open the software and operate it

Using on Camera/Video



Using on TikTok (Or other video playback software)



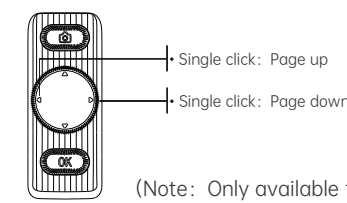
How to switch the video to a horizontal screen?

1. Turn on the screen lock of the phone
2. Flip the phone to the left to landscape mode. Then long press 3S "Up" button to switch to horizontal screen operation mode
3. Single click "up" button: play the previous video
Single click "down" button: play the next video
Single click "OK" button: pause/play
4. Flip your phone to portrait mode. Then long press 3s "Up" button to exit the horizontal screen mode

Using on E-book

Two-Step Solution Scrolling Up/Down Too Far

1. Click to adjust text
2. Turn off continuous scrolling



(Note: Only available for Kindle APP not for Kindle devices)

Product parameters

Model: R1
Frequency (Hz) : 20-20 khz
Communication distance: 10 meters
Charging case battery capacity: 250 Mah
Ring remote control battery capacity: 40 Mah
Charging time: about 1.5 hours
Charging interface: Type-C

Manufacturer: Shenzhen Zhijie Technology Co., Ltd.
Address: B1010, Block B, Zhantao Technology Building, Xinniu Community, Minzhi Street, Longhua District, Shenzhen, China

IC: FCC ID:

FCC Warning:

This device complies with Part 15 of the FCC Rules, Operation is subject to the following two conditions:

(1) This device may not cause harmful interference.

(2) This device must accept any interference received, including interference that may cause undesired operation.

UK REP: SUATOST CONSULTING LTD
Office: 101/32 Thrafield Street, London, United Kingdom
ECER BAY1, ECER BAY1
contact@suatost.com

US REP: Name: SELLER HELPER INC.
4455 1812 17th Street # 1205, Denver, CO 80202, United States
Zu Code 80202
14103007318873

EU REP: SUATOST COURIER SL
CALLE RIO TORMES NUM. 1, PLANTA 1, DERECHA, OFICINA 3,
santander, Madrid, 28047 Spain, 28047
suatostservice2@hotmail.com

CA REP: Company Name: Koby Smulya
Contact Name: Koby Smulya
Address: 230 Fourth Ave, Ontario K1G 2L8



MADE IN CHINA

FCC Warning

This device complies with part 15 of the FCC Rules. Operation is subject to the following two conditions: (1) This device may not cause harmful interference, and (2) this device must accept any interference received, including interference that may cause undesired operation.

Any Changes or modifications not expressly approved by the party responsible for compliance could void the user's authority to operate the equipment.

Note: This equipment has been tested and found to comply with the limits for a Class B digital device, pursuant to part 15 of the FCC Rules. These limits are designed to provide reasonable protection against harmful interference in a residential installation. This equipment generates uses and can radiate radio frequency energy and, if not installed and used in accordance with the instructions, may cause harmful interference to radio communications. However, there is no guarantee that interference will not occur in a particular installation. If this equipment does cause harmful interference to radio or television reception, which can be determined by turning the equipment off and on, the user is encouraged to try to correct the interference by one or more of the following measures:

- Reorient or relocate the receiving antenna.
- Increase the separation between the equipment and receiver.
- Connect the equipment into an outlet on a circuit different from that to which the receiver is connected.
- Consult the dealer or an experienced radio/TV technician for help.

The device has been evaluated to meet general RF exposure requirement. The device can be used in portable exposure condition without restriction.

IC Warning

- English: This device contains licence-exempt transmitter(s)/receiver(s) that comply with Innovation, Science and Economic Development Canada's licence-exempt RSS(s). Operation is subject to the following two conditions:

1. This device may not cause interference.
2. This device must accept any interference, including interference that may cause undesired operation of the device.

- French: Cet appareil contient des émetteurs/récepteurs exemptés de licence qui sont conformes aux RSS exemptés de licence d'innovation, sciences et développement économique Canada. Le fonctionnement est soumis aux deux conditions suivantes:

1. Cet appareil ne peut pas causer d'interférences.
2. Cet appareil doit accepter toute interférence, y compris les interférences qui peuvent causer un fonctionnement indésirable de l'appareil.

Radiation Exposure Statement

The device has been evaluated to meet general RF exposure requirement. The device can be used in portable exposure condition without restriction.

L'appareil a été évalué pour répondre aux exigences générales d'exposition aux radiofréquences. L'appareil peut être utilisé en condition d'exposition portable sans restriction.