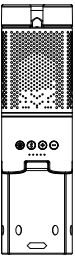


户外蓝牙音响露营灯

Z1



产品说明书

使用产品前, 请仔细阅读本使用说明书并妥善保存

欢迎使用

感谢选择我司多功能户外蓝牙音响露营灯。  
多功能户外露营灯适用于各种应用场景。  
自带 180 度角度可调灯头, 可轻松解决个人或小队出行行的  
多角度照明需求。带有蓝牙音响, 搭配氛围灯, 烘托温馨氛围, 让  
用户身心放松。产品自带磁吸支架, 户外使用可轻松吸附于越  
野车表面或者其他金属表面。  
户外露营、冒险、出任务、帐篷露营.....照明好帮手。  
开启你的冒险, 享受这令人激动的时刻。

安全与警告提示

- ◇ 使用前请确保电量充足, 避免使用中途断电影响使用体验。
- ◇ 电池放电到低电量请尽快充电, 低电量状态长时间搁置可能会导致机芯过电而无法正常充电。
- ◇ 不要长时间拉升产品金属管, 避免破坏内部弹弓线的弹性结构。
- ◇ 金属杆拉升状态下避免产品掉落, 方式金属杆形变。
- ◇ 避免用力收缩灯头。
- ◇ 轻拉轻收产品灯头避免内部线材卡锁。
- ◇ 灯头不要长时间在水下使用, 灯座采用IPX5防水等级设计, 请勿将产品长时间深泡在高温开水或温水中。
- ◇ 产品工作时不要直接触摸灯头, 谨防烫伤。
- ◇ 充电前打开USB硅胶塞, 建议使用5V/2A标准充电器进行充电, 其他规格充电器可能无法正常充电或者充电缓慢。
- ◇ 请勿拆卸或改变产品结构, 以防触电或火灾。
- ◇ 请勿在充电接口潮湿或明显潮湿的情况下充电, 以避免触电危险, 请保持充电接口干燥。

产品特性

1. 可以拉伸至100cm
2. 顶部照明可以旋转180度
3. 亮度以及色温可灵活调整
4. 电池电量显示
5. 底部磁吸支架
6. 带蓝牙扬声器, 带氛围灯
7. 支持快速充电

包装清单



产品\*1



充电线\*1

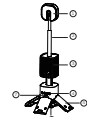


说明书\*1



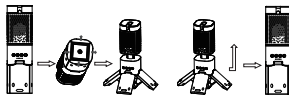
螺钉\*4

产品说明



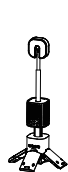
- ①灯头
- ②功能按键
- ③电量显示
- ④金属管
- ⑤支架脚
- ⑥防水圈
- ⑦蓝牙音响
- ⑧四角柱
- ⑨主体

使用说明

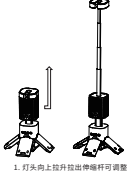


1. 打开支架时先将产品支架脚与中间柱子拉开
2. 打开支架便于产品更稳固放置

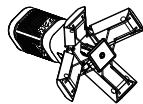
握住产品主体上侧底部支架脚可  
自动收缩, 便于收纳



1. 灯头可沿着金属轴旋转来调整照明角度
2. 调整角度: 0°-180 度



1. 灯头向上拉升拉出伸缩杆可调整  
照明高度与范围
2. 产品最高可达到 100cm
3. 按压灯头收缩伸缩杆



1. 使用磁吸功能时底部支架脚打开
2. 确保支架脚示刻痕与金属表面充分接触

按键	按键说明
	单击开/关切换白光、暖光、RGB氛围光 长按无极调光
	长按开/关/关闭蓝牙模式 单击暂停/播放
	长按音量加, 单击下一首
	长按音量减, 单击上一首

产品基本参数

产品名称	户外蓝牙音响露营灯	产品型号	Z1
材质	ABS+PC	防水等级	IPX5
波段	800nm	电池容量	14000mAh
产品重量	980g	产品尺寸	15*15*210mm

※使用最大亮度时, 如果电池电量不足亮度将自动变暗以防止功耗。

故障排除

	电量不足, 请先充电后使用
不启动或停止工作	请确认是否处于充电状态, 按下充电线, 重新开机
	工作一会儿后停机, 请重新启动或检查电量是否充足
	电池温度过高, 温度保护待电池温度降低后启动
充不进电	充电指示灯不亮, 检查充电器是否插好
磁吸不住	重新打开支架, 检查支架斜面是否与金属表面充分接触
灯头无法正常收帽	缓慢拔出灯头再次尝试



FCC警告

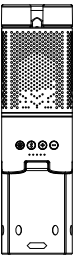
本设备符合FCC规则第15部分。  
操作必须符合以下两个条件:  
(1)本设备不得造成有害干扰;(2)本设备必须接受接收到的任何干扰, 包括  
可能导致不正常操作的干扰。

任何未经合责任方明确批准的更改或修改都可能使用户无权操作设备。  
注意: 根据FCC规则第15部分, 本设备已经过测试, 符合B类数字设备的限制。  
这些限制是为了在住宅设置中提供合理的保护, 防止有害干扰。本设  
备产生、使用并能辐射射频能量, 如果不按照说明书安装和使用, 可能会对  
无线电通信造成有害干扰。  
但是, 不能保证在特定的安装中不会发生干扰。如果本设备对无线电或电  
视接收造成有害干扰,  
这可以通过关闭和打开设备来确定, 鼓励用户尝试通过以下一种或多种措  
施来纠正干扰:  
--重新定位或重新安置接收天线。  
--加大设备与接收机之间的距离。  
--将设备连接到与接收器连接的电路不同的插座上。  
--向经销商或有经验的收音机/电视技术人员寻求帮助。

为了遵守FCC的射频暴露指南, 本设备的安装和操作应在散热器与身体之  
间保持至少20cm的距离

OUTDOOR BLUETOOTH SPEAKER  
CAMPING LIGHT

Z1



Product manual

Before using the product,  
please read this user manual carefully and store it properly

Welcome to use

Thank you for choosing our multifunctional outdoor Bluetooth sound camping light.  
The multifunctional outdoor camping light is suitable for various application scenarios.  
Equipped with a 180 degree adjustable lamp head, it can easily solve the problem of personal or small team travel.  
Multi-angle lighting requirements. Equipped with Bluetooth sound system and ambient lighting, it creates a warm atmosphere and allows users to relax both physically and mentally. The product comes with a built-in magnetic bracket, which can be easily adsorbed on the surface of off-road vehicles or other metal surfaces for outdoor use.  
Outdoor camping, adventure, missions, tent camping Good lighting helper. Embark on your adventure and enjoy this exciting moment

Safety and warning prompts

- Before use, please ensure that the power is sufficient to avoid power failure during use.
- Battery discharge to low power, please charge as soon as possible, low power state for a long time may lead to overcharge and can not be charged normally.
- Do not pull up the product metal tube for a long time to avoid damaging the elastic structure of the internal slingshot line.
- Metal rod pull up state to avoid product fall, metal rod deformation.
- Avoid forcibly shrinking the lamp holder.
- Light pull light product lamp holder to avoid internal wire stuck.
- Lamp holder should not be used underwater for a long time. The lamp holder adopts IPX5 waterproof grade design, do not immerse the product in high temperature boiling water or warm water for a long time.
- Do not touch the lamp holder directly when the product is working, beware of burns.
- Open the USB silicone plug before charging. It is recommended to use 5V/2A standard charger for charging, other specifications chargers may not charge properly or charge slowly.
- Do not disassemble or change the structure of the product to prevent electric shock or fire.
- Do not charge when the charging interface is wet or obviously wet to avoid electric shock.
- Dangerous, please keep the charging interface dry.

Product features

- Can be stretched to 100cm
- The top lighting can rotate 180 degrees
- Brightness and color temperature can be flexibly adjusted
- Battery level display
- Bottom magnetic suction bracket
- Equipped with Bluetooth speaker and ambient lighting
- Supports fast charging

Packing list



Products \*1



Charging cable \*1

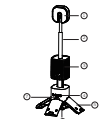


Instructions \*1



Fixing pin \*4

Product description



1 lamp holder

2 metal tube

3 Bluetooth speaker

4 function keys

5 support foot

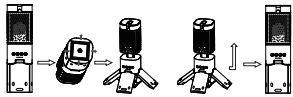
6 quadrangle column

7 power display

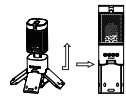
8 waterproof plug

9 main body

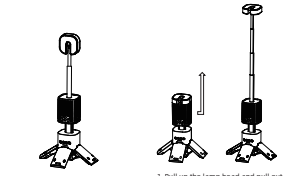
Instructions for use



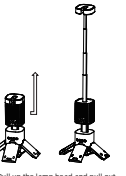
- When opening the bracket, first pull the product bracket legs away from the middle pillar
- Opening the bracket facilitates a more stable placement of the product



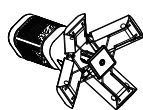
- Grasp the main body of the product and lift the bottom bracket feet up
- Automatic shrinkage for easy storage



- The lamp head can be rotated along the metal axis to adjust the lighting Angle
- Adjust the Angle: 0-180 degrees



- Pull up the lamp head and pull out the telescopic rod to adjust the lighting height and range
- The product can reach 100cm
- Press the lamp cap to shrink the expansion rod



- The bottom bracket should be opened when using the magnetic function
- Ensure that the inclined surface of the support is in full contact with the metal surface

key	Key description
	Click to enable/switch White light, warm light, warm white light, RGB ambient light Long press the endless dimmer
	Long press to turn on / off the speaker Click pause / play the music
	Long press to increase volume, Click on the next song
	Long press to decrease volume, Click on the last song

Basic parameters

Product name	Outdoor Bluetooth speaker Camping light	Product model	Z1
Material	ABS+PC	Waterproof class	IPX5
Lumen	800lm	Battery capacity	1400mAh
Product weight	180g	Product size	15*19*21mm

If when using the maximum brightness, the brightness will automatically dim if the battery is low to prevent power consumption.

Troubleshooting

Does not start or stop working	Battery is low, please charge before use Please confirm whether it is in the charging state, Unplug the charging cable, and restart the machine Stop after working for a while, please restart or check whether the power is sufficient If the battery temperature is too high, start the temperature protection when the battery temperature decreases
Unable to charge	The charging indicator is not on: Check whether the charger is plugged in properly Re-open the bracket and check whether the bracket bevel is in full contact with the metal surface
Magnetic failure	Slowly pull out the lamp cap and try again
The lamp cap does not shrink properly	



FCC WARNING

This device complies with part 15 of the FCC Rules. Operation is subject to the following two conditions: (1) this device may not cause harmful interference, and (2) this device must accept any interference received, including interference that may cause undesired operation.

Any changes or modifications not expressly approved by the party responsible for compliance could void the user's authority to operate the equipment.

NOTE: This equipment has been tested and found to comply with the limits for a Class B digital device, pursuant to Part 15 of the FCC Rules. These limits are designed to provide reasonable protection against harmful interference in a residential installation. This equipment generates, uses and can radiate radio frequency energy and, if not installed and used in accordance with the instructions, may cause harmful interference to radio communications.

However, there is no guarantee that interference will not occur in a particular installation. If this equipment does cause harmful interference to radio or television reception, which can be determined by turning the equipment off and on, the user is encouraged to try to correct the interference by one or more of the following measures:

-- Reorient or relocate the receiving antenna.

-- Increase the separation between the equipment and receiver.

-- Connect the equipment into an outlet on a circuit different from that to which the receiver is connected.

-- Consult the dealer or an experienced radio/TV technician for help.

To maintain compliance with FCC's RF Exposure guidelines, This equipment should be installed and operated with minimum 20cm distance between the radiator and your body. Use only the supplied antenna.