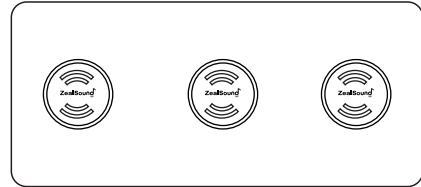


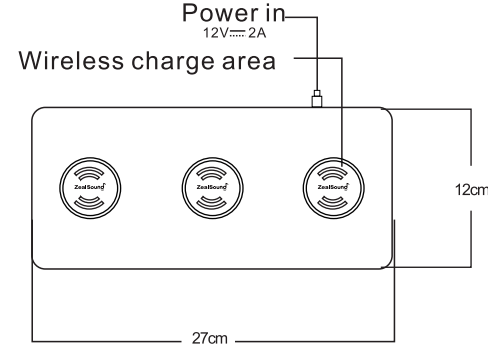
WIRELESS CHARGING POWER STATION

Any questions, please feel free to contact us via Amazon
Message OR Email directly info@zealsound.com We
will try our best to find a solution.



Quick Start Guide&User Manual WG-3B/WG-3H

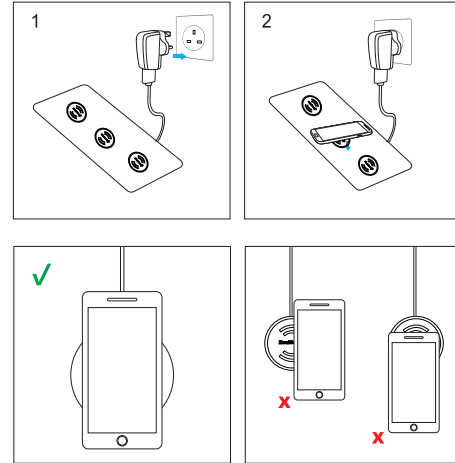
Product specification



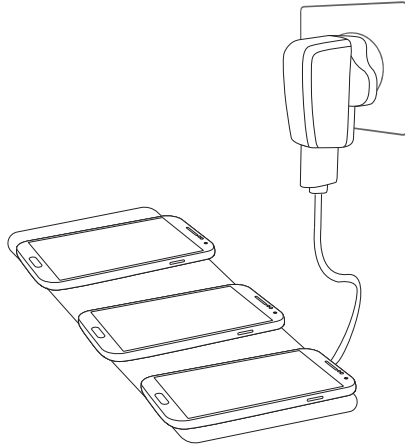
Product parameter

MODEL: WG-3B/WG-3H
INPUT: DC12V-2A
OUTPUT: 10W*3
WIRELESS CHARGING STANDARD: QI COMPATIBLE
CHARGE DISTANCE: 4-8MM
CHARGE DISTANCE: 75%
POWER CHARGING: FOR 3 DEVICES
DIMENSION: 270MM*120MM*8MM

Direction for use



Connect three mobile phones



Three mobile phones can be charged at the same time

THE PACKING INCLUDE:
WIRELESS CHARGING POWER STATION X 1
DC 12V-2A ADAPTER X 1
USER MANUAL X 1

Care & Maintenance

- Avoid humidity, liquid, fire and high temperature as it may cause hazard to users. The product water-proof is IPX1.

- Do not try to disassemble or modify the product.

- Do not attempt to disassemble to avoid fire hazard or shortcircuit.

- Any of damage by abnormal use of product except product defectiveness itself will void the manufacture warranty.

- Do not use product when the cord is damp, damaged or, loose as it may cause short circuit and overheat.

- Do not bend the power cord.

- Do not handle the power cord with wet hands or pull the built-in cable.

- Having the silicon skin to be in contact with overheated devices or objects may cause scald, such as red dots or pigmentation.

- Keep the device away from microwave.

- Wireless charging transmitter are compatible with all WPC certified products.

Qi is a registered trademark of WPC. All rights reserved.

FCC Statement:

Warning:
Changes or modifications to this unit not expressly approved by the party responsible for compliance could void the user's authority to operate the equipment.

NOTE:
This device complies with part 15 of the FCC Rules. Operation is subject to the following two conditions: (1) This device may not cause harmful interference, and (2) this device must accept any interference received, including interference that may cause undesired operation.

This equipment has been tested and found to comply with the limits for a Class B digital device, pursuant to part 15 of the FCC Rules. These limits are designed to provide reasonable protection against harmful interference in a residential installation. This equipment generates, uses and can radiate radio frequency energy and, if not installed and used in accordance with the instructions, may cause harmful interference to radio communications. However, there is no guarantee that interference will not occur in a particular installation. If this equipment does cause harmful interference to radio or television reception, which can be determined by turning the equipment off and on, the user is encouraged to try to correct the interference by one or more of the following measures:

- Reorient or relocate the receiving antenna.
- Increase the separation between the equipment and receiver.
- Connect the equipment into an outlet on a circuit different from that to which the receiver is connected.
- Consult the dealer or an experienced radio/TV technician for help.

The equipment complies with FCC Radiation exposure limit set forth for uncontrolled environment. This equipment should be installed and operated with minimum distance 20cm between the radiator and your body.