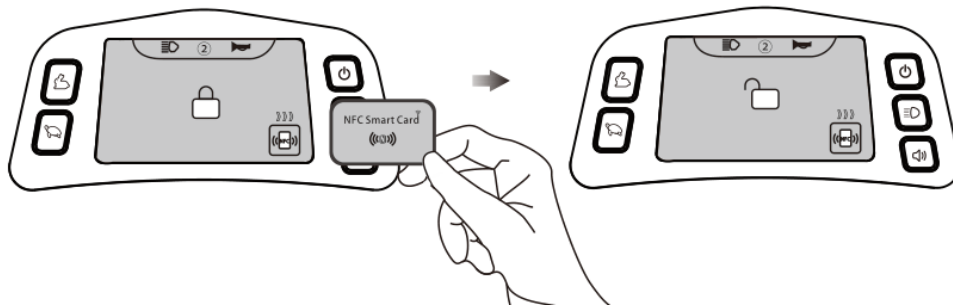


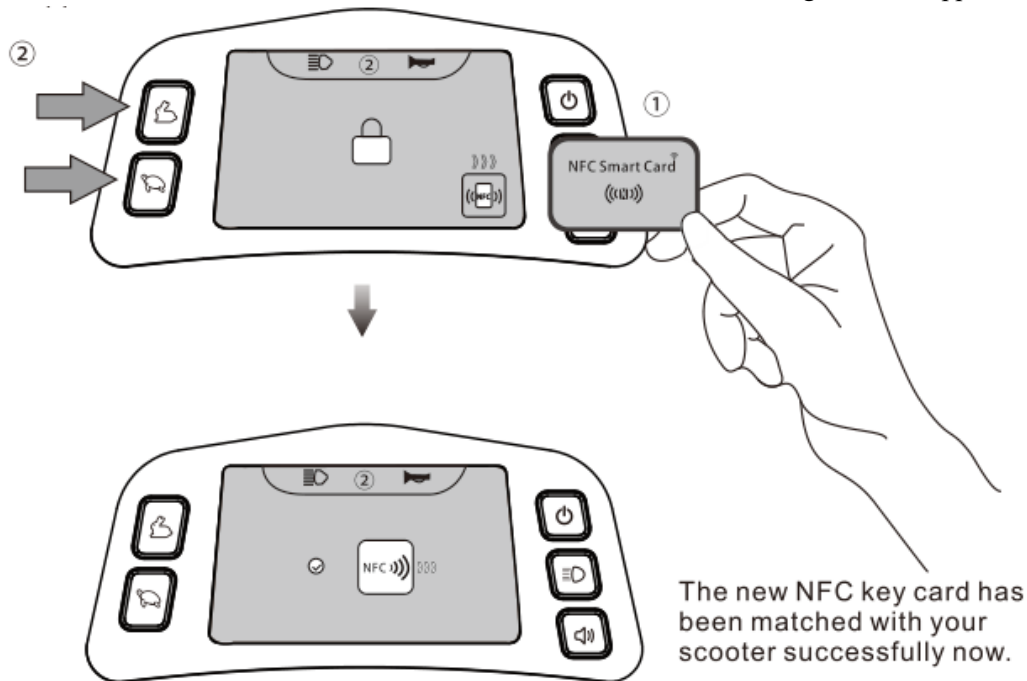
Press power switch button, place your NFC key card in the right bottom sensor area to unlock it, and then the scooter is ready to go.



If the NFC key card is lost, please consult your dealer to purchase thenew card.

How to match the new NFC key card with your scooter?Please follow the steps below:

1. Take the new NFC card and place it in the right bottom sensor area.
2. Press and hold the both left buttons for 10 seconds until the following interface appears.



Please take attention that changes or modification not expressly approved by the party responsible for compliance could void the user's authority to operate the equipment.

This device complies with Part 15 of the FCC Rules. Operation is subject to the following two conditions:

- (1) This device may not cause harmful interference, and
- (2) This device must accept any interference received, including interference that may cause undesired operation.