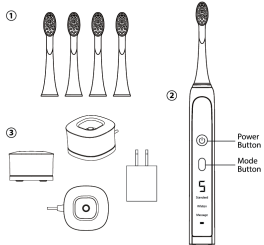


Brand: iglow	Quantity: 1pc	Designer: Steph	Notes:
Sub brand: iglow	Category: Manual	Date: 7.9.24	
Item Name: V3500 Sonic TB	Item No: xxxxxx	Substrate:	
Description: Manual	Version: v1	Finish:	

尺 寸	480*180mm（刀模）	颜色要求	四色印刷
材 质	105g铜版纸	工艺要求	折页
表面处理	无	现场看样	否
备 注	新文件/折页，成品：80*180mm		
版 本	修订日期	修订内容	任务下达人
1	20210807	文件审核，加注印刷要求	陈双富
			审核/修订人
			楼俊

iglow!

V3500 Sonic Toothbrush



Main Parts

1. Replacement Brush Heads (4)
2. Rechargeable Waterproof Toothbrush Handle
3. USB Charging Base with Adapter

1 Year Warranty

Safety Warnings

1. Users new to sonic toothbrushes may experience slight numbing or other sensations after the first few uses.
2. DO NOT open, repair or alter the product without authorization.
3. DO NOT knock or drop the product. If product is defective, please stop using and see the Charging Instructions section of this manual.
4. If you've had oral surgery in the past two months, please consult with your dentist before using this product.
5. Contact your dentist if excessive bleeding occurs or if bleeding continues after the first week of using the product.
6. This product is designed for cleaning teeth and tongue only. DO NOT use it for any other purposes.
7. Close supervision is necessary when this product is used by, on, or near children. This product is NOT a toy.
8. Keep the product away from high temperatures, heat sources and direct sunlight.

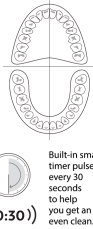
User Instructions

Here is how iglow works:

- Attach the brush head and ensure it fit well (See Brush Head).
- Press the "Power Button" to turn on the product.
- Select the desired mode - Standard, Whiten and Massage - by repeatedly pressing the "Power Button".
- Select the desired brushing intensity 1 to 5 by repeatedly pressing the "Intensity Button".
- After the product is on, press "Power Button" to select mode, if there is no further operation on "Power Button" within 3 second, press it again will turn off the product. And the latest mode and intensity will be remembered.

Using Your Toothbrush

1. Wet the bristles and apply toothpaste.
2. Place toothbrush in mouth before turning on.
3. Turn on and glide brush slowly along your teeth. Gently and slowly move the brush head across the teeth in small up and down motions. For best results, brush each quadrant for 30 seconds (smart timer will pulse every 30 seconds when it is time to switch quadrants).
4. When finished brushing, rinse the toothbrush and let air dry.
5. Repeat twice daily or as recommended by your dentist.



Brush Head



- To attach: slide brush head down toward the handle. Turn clockwise until secured. (Diagram 1)
- To detach: Turn brush head counter-clockwise. Pull brush head off along the handle. (Diagram 2)
- Charging Instructions**
- When the battery indicator light flashes red or product can not be turned on as usual, the toothbrush needs to be recharged.
 - To charge, put the toothbrush on the charging base. The battery indicator light will turn red during charging.
 - When fully charged, the light will be green.
 - The battery indicator light will show battery status and charging status (See chart below).

Indicator Status	Battery Status
None and product doesn't work	Battery level <10%
Red light flashes 10 times for about 10 seconds	Battery level at 10%-30%
None	Battery Level 30%-100%

Indicator Status	Battery Status
None	Battery level <10%
Red light	Battery Level 10%-90%
Green light	Battery Level 90%-100%

Technical Specifications

Input Voltage	5V
Input Power	1.5W
Product Material	ABS/TPE
Product Size	27.5x26.4x252.5mm
Charging Time	~8 hours
Working Temperature	0-50° C
Operative Standard	GB4706.59-2008
International Product System Certificate	ISO9001, ISO13485

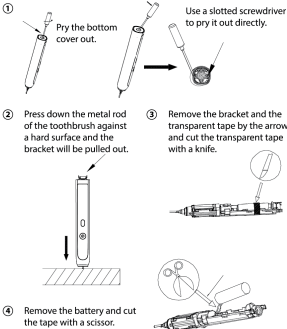


Disposal

This product contains lithium battery. Before disposing, please remove the battery and recycle or dispose of it according to your local waste disposal management regulations. If you have questions, consult your local waste management department.

Battery Removal

- To remove the battery, you will need a screwdriver and scissors
- Warning: Battery must be removed before disposing of the toothbrush. Make sure the battery is completely out of charge before removing.
- When using the tools, please observe basic safety rules and take protective measures to protect your eyes, hands, fingers, and the surface of your work area.



Service Center

If you have any questions in regards to the operation of this appliance, please contact our service center at:

Ashel Studios Inc.
Ontario, CA 91761
Tel: 1-877-274-8358
(Business hours Mon – Fri
8:00 AM – 5:00 PM PST)
Email: support@ashelstudios.com

Environmental Protection

If the appliance should no longer work at all, please make sure that it is disposed of in an environmentally friendly way.

FCC Statement

FCC Information

This device complies with part 15 of the FCC Rules. Operation is subject to the following two conditions: (1) This device may not cause harmful interference, and (2) this device must accept any interference received, including interference that may cause undesired operation.

WARNING: Changes or modifications to this unit not expressly approved by the party responsible for compliance could void the user's authority to operate the equipment.

NOTE: This equipment has been tested and found to comply with the limits for a Class B digital device, pursuant to part 15 of the FCC Rules. These limits are designed to provide reasonable protection against harmful interference in a residential installation. This equipment generates, uses and can radiate radio frequency energy and, if not installed and used in accordance with the instructions, may cause harmful interference to radio communications. However, there is no guarantee that interference will not occur in a particular installation. If this equipment does cause harmful interference to radio or television reception, which can be determined by turning the equipment off and on, the user is encouraged to try to correct the interference by one or more of the following measures:

- Reorient or relocate the receiving antenna.
- Increase the separation between the equipment and receiver.
- Connect the equipment into an outlet on a circuit different from that to which the receiver is connected.
- Consult the dealer or an experienced radio/TV technician for help.

The device has been evaluated to meet general RF exposure requirements. The device can be used in portable exposure condition at about restriction.

iglow!