

105g铜版纸 四色印刷 70x90mm 4折页

Wireless Earphones

H08



Precautions for use

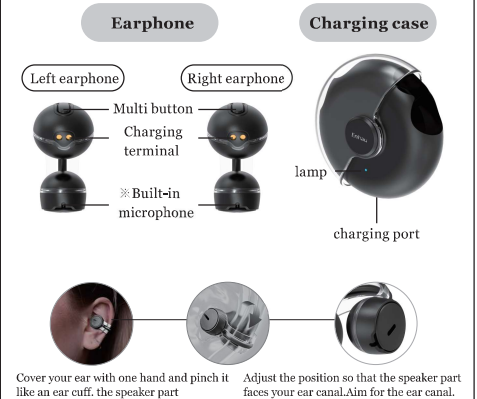
Thank you for purchasing our product.
Please read this instruction manual carefully to use the product safely.

- It may affect hearing aids, pacemakers, other medical electrical equipment, fire alarms, automatic doors, and other automatically controlled equipment.
Do not use this product near other devices, as malfunction may cause malfunctions or accidents.
- Please be careful about the volume when on public transportation or in public places so as not to disturb those around you.
- If you feel unwell while using this product, please stop using it immediately.
- This product is intended for general workplace and home use. We will not be held responsible for any damage caused by use other than as described in this manual.
- If this product is not used and stored for a long period of time, battery performance will decrease. It will recover by repeating charging and discharging several times.
- Please minimize the volume before use. Sudden loud noises may damage your hearing.
- Continuously listening to loud volumes that irritate your ears for long periods of time may have a negative effect on your hearing. To protect your ears, please be careful not to turn up the volume too high.
- Do not charge or touch the charging port with wet hands.
Doing so may cause electric shock.

Notes on Bluetooth

- This product does not guarantee connectivity with all Bluetooth compatible devices.
- Please communicate with other devices in a place with good line of sight. The communication distance may be shortened depending on the structure of the building or obstacles. In particular, if reinforced concrete or a human body (in contact) is placed between the terminals, noise may be generated or communication may become unavailable.
- If you connect and use Bluetooth compatible music/audio devices such as headphones, headsets, speakers, etc. and a mouse, keyboard, etc. at the same time, the music and audio may be interrupted.
- When connecting to Bluetooth, do not use it near wireless LAN or other wireless devices, near microwave ovens or other devices that emit radio waves, in places with many obstacles, or in other environments with poor radio wave conditions. Connections may drop frequently, communication speeds may drop significantly, or errors may occur.
- IEEE802.11g/b wireless LAN devices and Bluetooth devices such as this product use the same frequency band (2.4GHz), so if they are used nearby, they will cause radio interference with each other, reducing communication speed or making connection impossible. You might. In this case, turn off the power to devices that are not in use.
- If you are unable to communicate properly near a radio or broadcast station, please change the location of use.

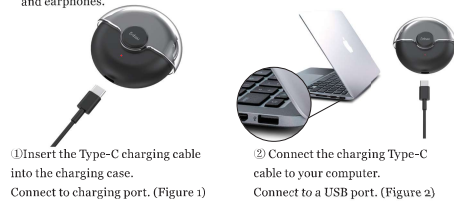
Name of each part



Note: Please check the L (left) and R (right) of the earphone body. Make sure to attach the left and right sides correctly.

How to charge

**When using for the first time, please fully charge both the charging cable and earphones.



③ The charging lamp on the case flashes red while charging, and changes from flashing to solid when fully charged. When you disconnect the cable, the charging light will turn off. (Figure 3)

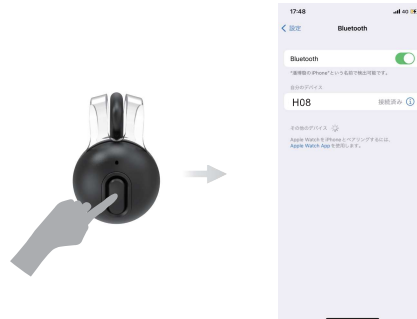
■ Charging time

When the LED on the charging case flashes red, please charge using the method above.

*If this product is not used for a long period of time, the performance of the built-in battery may deteriorate. If you plan to store this product for a long period of time, please charge it approximately once a month.

How to Use

- ① When you take out the left and right earphones from the charging case, the earphones will be automatically paired.
- ② The LED lamps on the left and right earphones will flash white.
- ③ Launch Bluetooth from the smartphone settings.
- ④ Tap "Ho8" from the list of searched devices. Once connected, the LED lamp will turn off.
- ⑤ If the connection does not go well, disconnect the Bluetooth connection on your smartphone and try again from the beginning.



Various operation methods

Operation/state	How to operate
answer the phone	Press either the left or right multi-button once
hang up	Press either the left or right multi-button once
Call/Reject	Press and hold the left or right multi-button
Music play/pause	Press either the left or right multi-button once
Play previous song	Press the left multi button twice
play next song	Press the right multi button twice
increase volume	Press and hold the right multi-button
reduce volume	Press and hold the left multi-button

FAQ

- Q. I suddenly can't connect or pair.
- A. Disconnect from your smartphone's Bluetooth, then pair and connect again: please.
- Q. What is the communication distance between the headset and device?
- A. Up to about 30m. If there is an obstacle such as a concrete wall in between, the communication distance will be shortened.
- Q. Will my communication be intercepted by other Bluetooth users?
- A.No. Pairing secures communication.
- Q. If the connection between the phone and the Ho8 earphones is lost, do I need to reconnect it?
- A. It depends on the phone model. Some models reconnect automatically, while others do not.
- Q. I hear noise from my headset.
- A. Noise will be generated if you exceed the communication range or if there is a wall or human body (in contact).

FCC Caution.

This device complies with part 15 of the FCC Rules. Operation is subject to the following two conditions:

- (1) This device may not cause harmful interference, and
- (2) this device must accept any interference received, including interference that may cause undesired operation.

Any Changes or modifications not expressly approved by the party responsible for compliance could void the user's authority to operate the equipment.

Note: This equipment has been tested and found to comply with the limits for a Class B digital device, pursuant to part 15 of the FCC Rules. These limits are designed to provide reasonable protection against harmful interference in a residential installation. This equipment generates uses and can radiate radio frequency energy and, if not installed and used in accordance with the instructions, may cause harmful interference to radio communications. However, there is no guarantee that interference will not occur in a particular installation. If this equipment does cause harmful interference to radio or television reception, which can be determined by turning the equipment off and on, the user is encouraged to try to correct the interference by one or more of the following measures:

- Reorient or relocate the receiving antenna.
- Increase the separation between the equipment and receiver.
- Connect the equipment into an outlet on a circuit different from that to which the receiver is connected.
- Consult the dealer or an experienced radio/TV technician for help.

* RF warning for Portable device:

The device has been evaluated to meet general RF exposure requirement. The device can be used in portable exposure condition without restriction.