

72 mm

mint
houz

QUICK START GUIDE

Qi2.0 3-in-1 Desktop
Magnetic Wireless Charger

Leap M315A

EN

Official website: www.minthouz.com
Technical support: support@minthouz.com

INTRODUCTION

Featuring three wireless charging areas, the Qi 2.0 3-in-1 Desktop Magnetic Wireless Charger can charge devices on the front magnet panel and side magnet panels. The front magnet panel supports Qi 2.0 MPP wireless charging protocol, delivering up to 15W for device charging. The right magnet panel supports Qi BPP wireless charging protocol, providing 5W charging for Qi BPP-supported earbuds. The left magnet panel is specifically designed for charging the iWatch. And this wireless-charging area is foldable and can be upright to use. Magnetic design is used on the phone and iWatch charging areas for convenient placement and instant charging of smartphones. Additionally, the front magnet panel has a foldable bracket, enhancing iPhone stability during charging and accommodating non-magnetic smartphone.

FEATURES

- 3-in-1 Wireless Charger
- Support WPC-Qi2.0 MPP 15W / BPP 5W / iWatch 3W Protocols
- Put on the Charge, Accurate Alignment
- Bottom Folding Bracket, Compatible with Non-magnetic Phones
- Support Foreign Object Detection (FOD)
- Over Current Protection (OCP)
- Over Temperature Protection (OTP)
- Input Under-Voltage Lockout (UVLD)
- Transmitter and Receiver Coils Must be Kept 2-6mm

SPECIFICATION

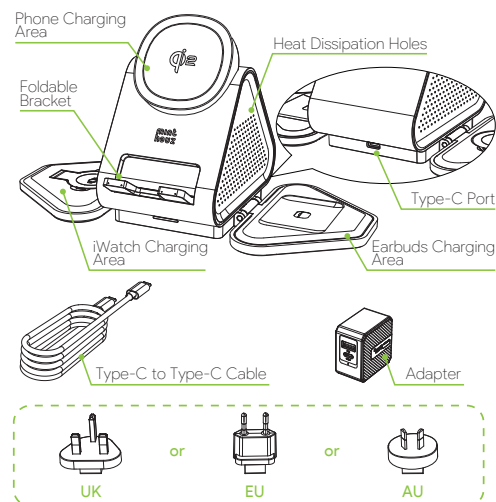
Material: ABS plastic
Input: 5V3A; 9V3A; 12V3A;
Phone Output: 5W/7.5W/15W (Qi2)
Earbuds Output: 5W
Watch Output: 3W
Transmission Distance: 2-6mm
Phone model: Qi protocol-supported smart phones

-EN-01-

IN THE BOX

- 1 x 3-in-1 Wireless Charger
- 1 x PD3.0 Power Adapter
- 1 x USB-C to USB-C Cable
- 1 x Quick Start Guide

OVERVIEW



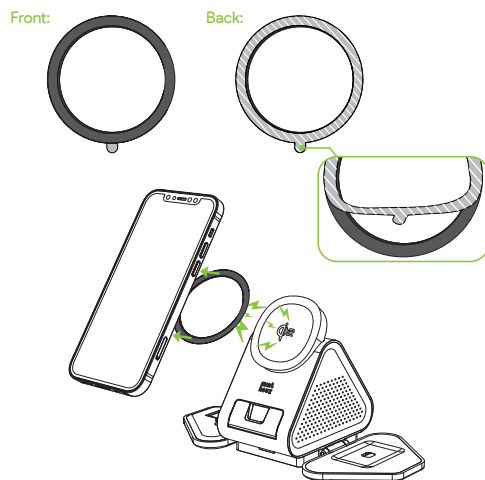
-EN-02-

72 mm

HOW TO USE

Magnetic Adapter Ring Setup

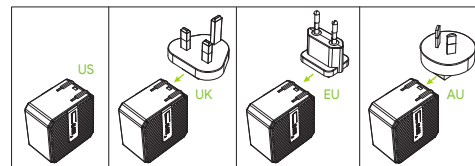
For a better magnetic experience, non-magnetic phones or phone cases should stick to the magnetic adapter ring to strengthen the magnetism. Please tear off the double-sided adhesive tape first, then stick the magnetic adapter ring to the central back of your phone case.



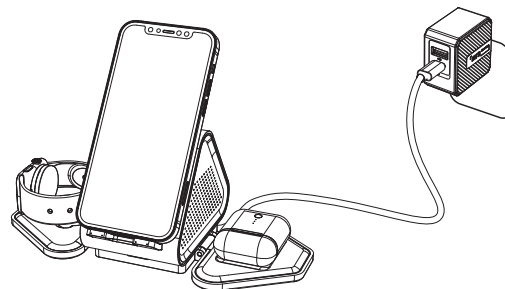
Note:
Different phones have different coil positions, please consult your phone manufacturer to stick the magnetic adapter ring correctly. Incorrect sticking position can result in a risk of phone heating.

-EN-03-

Take out the adapter you want (UK/EU/AU), and insert the jack directly into the US plug.



- Step 1. Connect USB-C to USB-C cable to the Power Adapter.
- Step 2. Plug the Power Adapter into the power outlet.
- Step 3. Put down the side panels and the foldable support panel.
- Step 4. Align the back of your phone, earphone and iWatch or other devices with the Magnet Panels and Charging Coil, then put devices on it.



-EN-04-

ATTENTION

- It is forbidden to insert metal objects between the wireless charging coil and the mobile phone coil during charging, which will cause the metal to generate high temperature and cause a fire.
- If the wireless charger does not charge the mobile phone after connecting the power adapter, then try to restart the wireless charger, or try restarting the phone.
- In order to better secure the mobile phone in place, we recommend you to remove the phone case, or use a thin case.
- In order to charge better, the thickness of the phone case are recommended not to exceed 5mm.
- Please keep out of children.
- Do not reassemble, open or repair the product by yourself without professional help, and drop it or hit it strongly is also prohibited.
- The left charging area are not compatible with wireless-charging android watches, like Samsung or Huawei.

-EN-05-

This device complies with part 15 of the FCC Rules. Operation is subject to the following two conditions: (1) This device may not cause harmful interference, and (2) this device must accept any interference received, including interference that may cause undesired operation.

Any changes or modifications not expressly approved by the party responsible for compliance could void the user's authority to operate the equipment.

NOTE: This equipment has been tested and found to comply with the limits for a Class B digital device, pursuant to Part 15 of the FCC Rules. These limits are designed to provide reasonable protection against harmful interference in a residential installation. This equipment generates, uses and can radiate radio frequency energy and, if not installed and used in accordance with the instructions, may cause harmful interference to radio communications. However, there is no guarantee that interference will not occur in a particular installation.

If this equipment does cause harmful interference to radio or television reception, which can be determined by turning the equipment off and on, the user is encouraged to try to correct the interference by one or more of the following measures:

- Reorient or relocate the receiving antenna.
- Increase the separation between the equipment and receiver.
- Connect the equipment into an outlet on a circuit different from that to which the receiver is connected.
- Consult the dealer or an experienced radio/TV technician for help.

FCC Radiation Exposure Statement

This equipment complies with FCC radiation exposure limits set forth for an uncontrolled environment. This equipment should be installed and operated with a minimum distance of 20 cm between the radiator and your body.

-EN-06-

105 mm

105 mm