

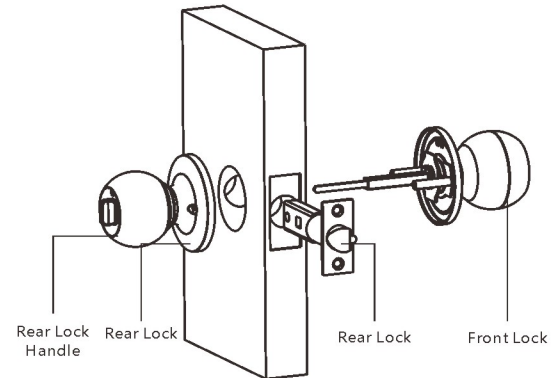
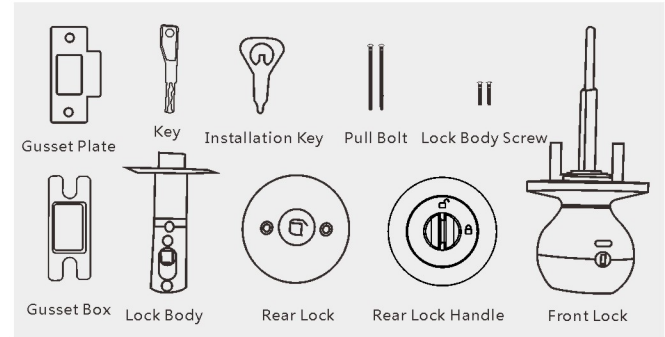


Smart Lock Installation Instructions



I. Packing List

Unpack the product package and check whether the following accessories are included.



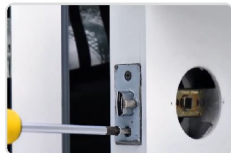
Door Lock Installation Diagram

II. Installation Steps

Step 1:



1. Install the lock body

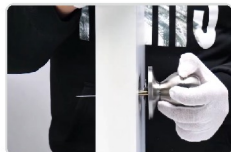


2. Tighten the screws

Step 2:



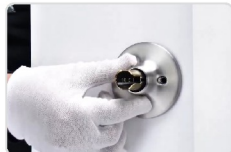
1. Install the front lock and pass the tail ruler through the square rod hole in the lock body



Step 3:



1. Install the rear lock and pass the tail ruler through the rear lock square bar hole



2. Tighten the pull screw

Step 4:



1. Adjust the horizontal and vertical position of the reverse lock knob according to the horizontal and vertical state of the tail ruler, so that the reverse lock knob and the tail ruler are in a unified state



2. Align the gap in the rear lock handle with the gap in the lock body



3. Fasten the rear lock handle



After the above steps are completed, the installation of the door lock is complete.

III. Usage and Operation

1. Register Fingerprint

Fingerprint registration can only be registered through Bluetooth, and you need to download the Tuya Smart APP on your mobile phone. The device mobile phone bind needs to touch to wake up the device before the Bluetooth device can be searched, and after the device is bound, you don't need to touch the device to directly connect the Bluetooth device.

2. Mechanical Knob Operation

- (1) The knob in the door is rotated to open vertically; When the lock is in the normally open state, the fingerprint is continuously verified twice within 3 seconds, and the fingerprint unlock is verified once after the lock is closed.
- (2) When the knob in the door is rotated to the horizontal position, it is reversed and locked; When the lock is in anti-lock mode, only the administrator's fingerprint can be matched, and wait for 5 seconds after unlocking (automatic anti-lock).

3. Restore Factory Settings

- (1) Data can be emptied through the Tuya app
- (2) Local operation: After repeatedly rotating the knob 5 times in 5 seconds, it will enter the factory reset state, the blue light of the fingerprint head will be always on, and the data will be cleared by touching any fingerprint within 10 seconds, and the buzzer will beep for a long time (during which the buzzer will sound when the button is pressed and raised).

4. Definition of Lights and Buzzers

- (1) If the identification is successful, the green light will be turned on, and the buzzer will sound 1 sound;
- (2) If the identification fails, the red light will flash 3 times and the buzzer will sound 2 times;
- (3) The red light will be on when charging, and the green light will be on when it is fully charged;
- (4) Low power alarm; when the power is low, the red light will flash 5 times after opening the door.

5. Low Power Consumption State

When the system is not bound to a Bluetooth device, the device will enter a sleep state if it does not touch the fingerprint or twist the knob within 15 seconds, and the Bluetooth device cannot be searched, and the device needs to be touched by touching the fingerprint or pressing the button to wake up the device to search for the connected Bluetooth device.

After the system is bound to a Bluetooth device, the device will enter a sleep state if it does not touch the fingerprint or twist the knob for 4 seconds, and the device does not need to be woken up, and the mobile phone can also directly initiate a Bluetooth connection through the Tuya Smart APP.


6. Trial and Error Locking

The device will enter a 120-second lock state after 5 consecutive recognition errors, and the fingerprint will not respond and send out an alarm sound for 10 seconds, which can only be unlocked by Bluetooth to release or wait for 120 seconds.

7. Aging Mode

Touch the fingerprint for 10 seconds without entering the fingerprint, the white light will flash 2 times, and the buzzer will sound 3 times, then release the hand and the device will enter the aging mode, and touch the fingerprint head in the aging mode will exit the aging.

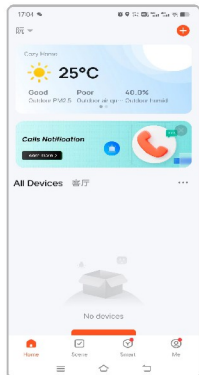
IV. Operations related to Tuya Smart

 Note: If there is no registered user, any fingerprint can unlock it. Indoor smart lock Bluetooth Tuya operation guide APP introduction and acquisition



"Tuya Smart APP" is a smart device management app provided by Tuya for end consumers. You can easily configure and control the smart products of the whole house through the "Tuya Smart APP", configure your favorite scenes and automation solutions, and share your smart devices with your family and friends, so as to enjoy the fun of smart products in the whole house. Download the APP: Search for "Tuya Smart" in the App Market or "Apple App Store" or scan the above Tuya AP QR code to download it to realize the Bluetooth unlocking and closing function of the mobile phone.

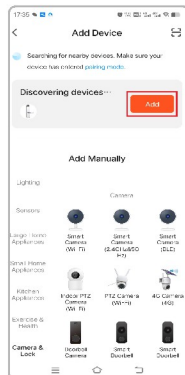
1. Download the Tuya Smart App from the Mobile App Market
2. Open the phone's Bluetooth and Location, and open the Tuya Smart App



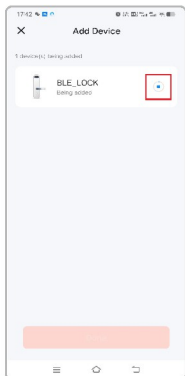
Main Interface



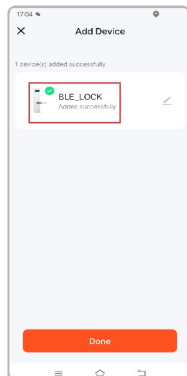
1. Select this device manually to start connecting



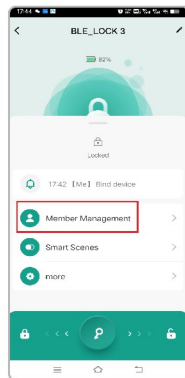
2. Click "Add Device" and start connecting



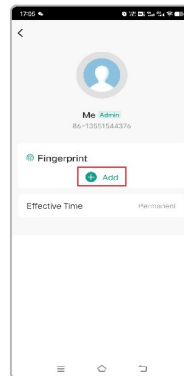
3. Connecting



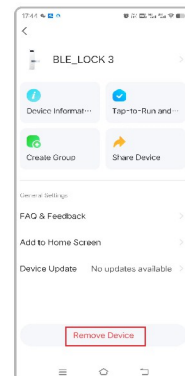
4. Connection success



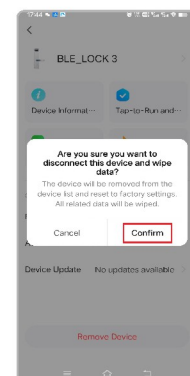
5. Enter the homepage to add users



6. Add or remove members or change names



7. Remove the device

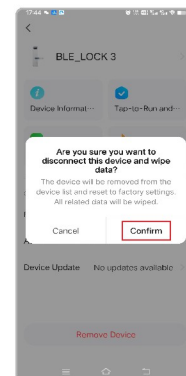
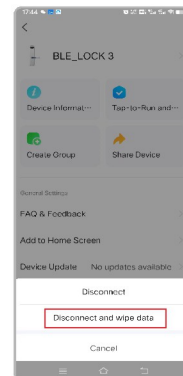
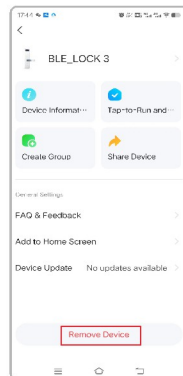


8. Confirm unbinding: (1. Unbind, 2. Unbind and clear data)

V. Factory Reset

How to reset and delete all users

1. Clear data through the Tuya App
- Method 1:



Method 2:

2. Local Operation:



After repeatedly rotating the knob 5 times within 5 seconds, it will enter the factory recovery state, the blue light of the fingerprint head will be always on, the green light will be on at the same time, and the buzzer will sound for a long time to indicate success, and press any fingerprint to clear the data within 10 seconds.

VI. Applications

1. Normally open mode



Verify outdoors, fingerprint lock twice in a row Verify fingerprint unlock once

2. Normally Closed Modes



In normally closed mode, it can only be unlocked with the management user's fingerprint or APP, and it will be automatically locked after 5 seconds.

VII. Emergency Unlocking



1. Unlock with a key



2. Plug the USB power cable into the connector

VIII. Product Parameters

Functions/Performance	Parameters	Remarks
Operating Voltage	3.3-4.2V	Nominal Voltage 3.7V
Alarm Voltage	3.5±0.1V	(1) Low battery detection, local voice prompts (2) Unlock more than 50 times after low voltage alarm
Deep Sleep Power Consumption	≤30uA	(1) Measurement method: Long standby power consumption credit
Static Power Consumption	≤50 uA	
Dynamic Power Consumption	≤200 mA	
Working Temperature	-25℃~+70℃	Complies with GA374-2019 Standards
Storage Temperature	-40℃~+85℃	
Humidity Requirements	< 93% RH	
ESD Protection	Contact +/- 8kV, air +/- 15kV	
Fingerprint Capacity	20 (the first 3 are administrators and the back 17 are regular users)	
Product Material	Aluminum+stainless steel	
Power Supply	Ternary lithium battery	
Applicable Door Thickness	35-55MM	
Unlock Method	Fingerprint/Password/APP	
Applicable Doors	Domestic and foreign wooden door/office door/ extremely narrow door/ecological door	

IX. Reminder

1. Keep at least one key outside the door in case you need it.
2. The indicator light will flash red when the battery is low, and the remaining power will only be used for about 50 times for the door lock.
3. You can unlock the lock with a key when the battery is dead, or use your fingerprint to power the door lock via the micro-USB port.

This device complies with part 15 of the FCC Rules. Operation is subject to the following two conditions: (1) This device may not cause harmful interference, and (2) this device must accept any interference received, including interference that may cause undesired operation.

Any Changes or modifications not expressly approved by the party responsible for compliance could void the user's authority to operate the equipment.

Note: This equipment has been tested and found to comply with the limits for a Class B digital device, pursuant to part 15 of the FCC Rules. These limits are designed to provide reasonable protection against harmful interference in a residential installation. This equipment generates uses and can radiate radio frequency energy and, if not installed and used in accordance with the instructions, may cause harmful interference to radio communications. However, there is no guarantee that interference will not occur in a particular installation. If this equipment does cause harmful interference to radio or television reception, which can be determined by turning the equipment off and on, the user is encouraged to try to correct the interference by one or more of the following measures:

- Reorient or relocate the receiving antenna.
- Increase the separation between the equipment and receiver.
- Connect the equipment into an outlet on a circuit different from that to which the receiver is connected.
- Consult the dealer or an experienced radio/TV technician for help.

FCC Radiation Exposure statement

The device has been evaluatec to meel general RF exposure requirement. The device can be used in porlable exposure condition without restriction.