

## 1. Antenna Description:

Antenna type	Internal antenna
Model	ACG1252
Frequency range	2400-2500MHz
Manufacturer	Yunjuhui (Shenzhen) Technology Co., Ltd
ANT Peak Gain	0.68 dBi

## 2. Antenna Photo:

Length :18.10mm  
diameter:1.16mm



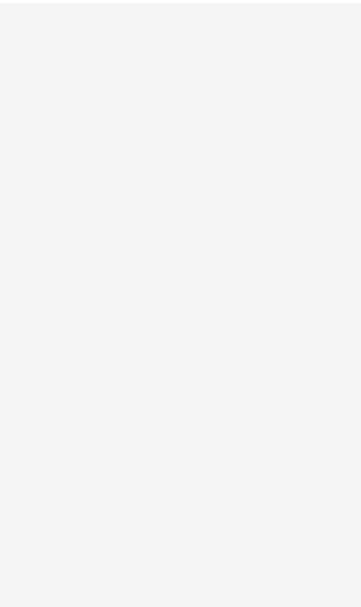
Length :14.25mm  
Length:12.89mm



Length :12.91mm  
Length:11.83mm



Length :5.52mm



### 3. Test Equipment & Conditions

#### 3.1 Test instrument

VSWR is tested using Agilent E5071B connected to a hand mechanism, and the status is free space.

#### 3.2 Test environment and methods

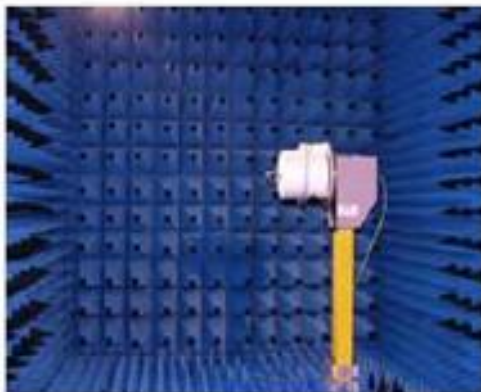
Dark room specifications: ETS-743

TD-SCDMA test equipment: StarPoint SP6010/Agilent 8960

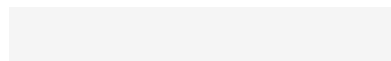
LTE-TDD/FDD-SCDMA test equipment: StarPoint SP8011/CMW500

WCDMA/GSM/CDMA test equipment: Agilent 8960

Passive efficiency testing equipment: Agilent Technologies E5071B

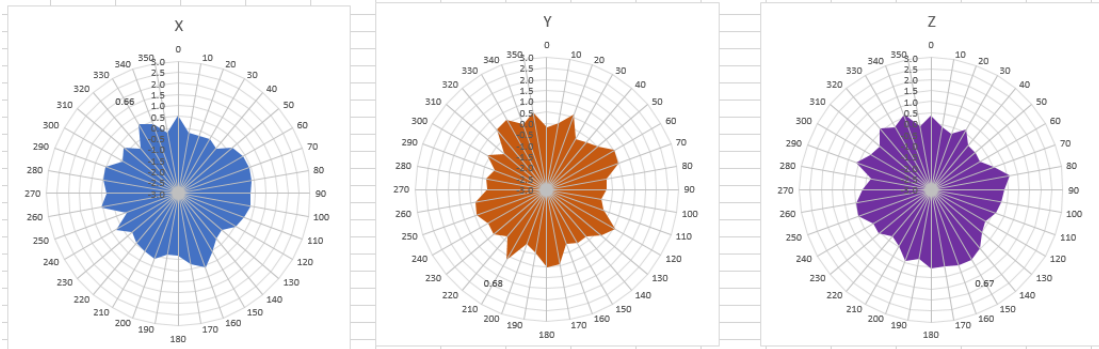


### 4 . Antenna Radiation Pattern

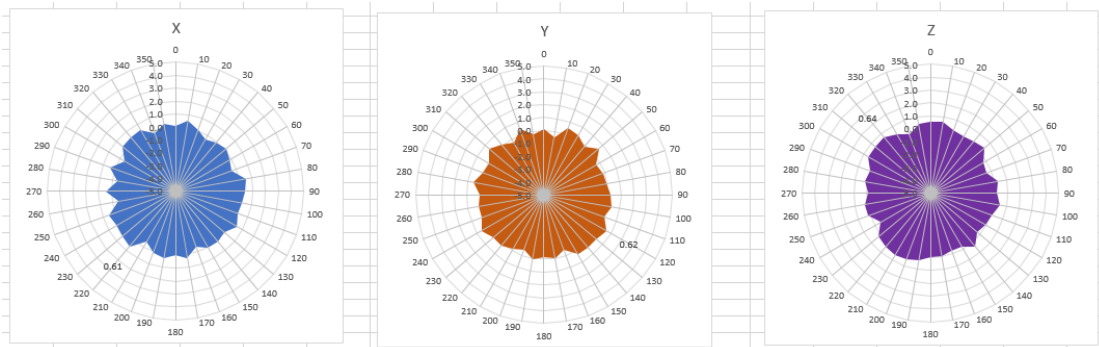




2400MHz



2450MHz



2500MHz

