

投屏支架

SCREEN PROJECTION

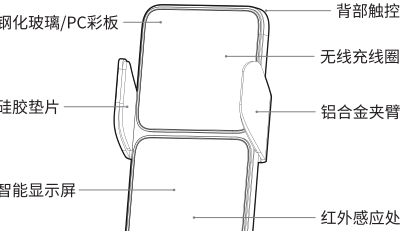
BK11-A

产品使用说明书

Product manual

尊敬的用户：  
请在使用本产品之前仔细阅读《使用说明书》  
并按照说明书要求正确操作

产品概述



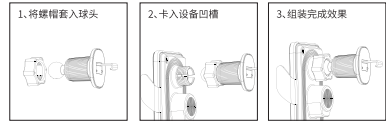
包装清单

- 智能投屏充电支架主机×1 J型叶片风口夹×1  
数据线×1 使用说明书×1

安装方法

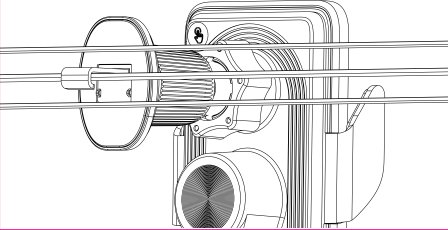
一、设备与风口夹组装图解

将支架的螺帽套入风口夹球头处,然后球头卡入设备背部凹槽



二、设备装在车上的方法

- 1.将J型风口夹金属片转至合适的长度后伸入叶片上方扣住
- 2.顺时针旋转夹子的中间滚筒,收紧到牢固为止



产品参数

- 1.材质:外壳PC/ABS
- 2.无线充输入:5V/2A, 9V/1.67A
- 3.无线充输出:15W、10W、7.5W、5W 自动识别
- 4.充电功率:110K-205KHz
- 5.充电距离:0-6mm
- 6.支持规格:支持QC无线快充的设备;  
如iPhone 8,iPhone 8+,iPhone X,iPhone 10,iPhone 11系列,iPhone 12,iPhone 13系列,iPhone 14系列,iPhone 15系列;三星S6,s6edge,s7,s7edge,s8,s8+;  
小米,OPPO,vivo等自带无线充电功能的手机。
- 7.执行标准:GB 4943.1-2022

教程视频

请扫右侧二维码打开网页  
观看全套产品使用教程



功能介绍

产品设备供电建议选择9V车充头  
如需使用汽车自带快充Type-C口(请自行配备双头Type-C口的数据线)  
ⓧ禁止使用汽车自带USB接口!

一、充电功能介绍

- 1.在设备连接电源的情况下,将自带无线充电功能的手机放上去  
即可进行15W功率的无线充电。(可通过程序控制无线充开关)
- 2.设备脚托位置预留手机充电的孔位。

二、感应功能介绍

- 1.在设备连接电源的情况下,将手机靠近支架正前方,夹臂自动张开  
然后自动闭合锁紧手机。(可通过程序控制红外感应开关)
- 2.触碰设备背部左上方感应区也可自动开合。
- 3.使用程序将红外感应关闭后,只能使用触控自动开合  
设备不连接电源的情况下,红外感应功能将自动关闭。

三、投屏功能介绍

- 1.在设备已连接手机的情况下,可以使用程序内的动画/图片/短语  
或者自定义图片、输入文字/车牌进行投屏。  
如需使用更多自定义素材可联系商家获取!

\*设备未连接电源的情况,无法使用蓝牙,只有设备通电,才会自动开启蓝牙

使用程序

设备功能介绍

- ① 官方网站 拥有大量的原创素材 里面包括[动画/图片/短语]可进行投屏使用。
- ② 图片投屏 是由用户按照喜爱的图进行投屏。
- ③ 短语投屏 是将用户输入的一段文字进行投屏,可作为备忘录使用。
- ④ 圈子素材 是用户个人分享投屏素材的社区。
- ⑤ 无线充电开关 是设置产品设备的无线充电功能开启或者关闭。
- ⑥ 红外感应模式 为“常規开启”与“长期关闭”  
当你设置为“常規开启”,红外功能会保持开启,如果设备未连接电源,将会自动关闭。  
当你设置为“长期关闭”,红外功能会停止工作。
- ⑦ 恢复出厂设置按键 可以将设备的所有功能设置、包括投屏的素材都恢复到默认状态。

程序连接

请扫右侧二维码打开网页,选择使用  
小程序 或者下载软件APP搭配使用



连接设备的方法:

- 1、确保产品设备已连接电源
- 2、手机保持蓝牙开启状态
- 3、打开小程序或者APP点击扫描
- 4、最近的设备会自动弹出连接窗口
- 5、点击连接即可跳转至设备控制窗口

\*长按设备背部触控区域,即可弹出二维码,扫码即可打开小程序  
或者 微信小程序 直接搜索“车侦探”使用。

注意事项

- 1.请勿过度挤压或碰撞设备。
- 2.请勿在严重高温,潮湿或腐蚀性环境下使用设备  
避免损坏设备的电路。
- 3.禁止拆解、撞击、泡水或投入火中

感谢您的使用!



Smart Screen Projection

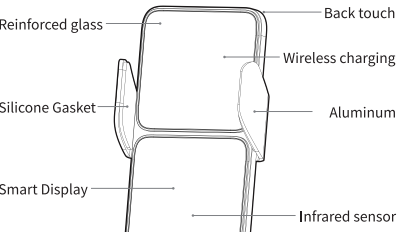
Phone Holder

BK11-A

Product manual

Dear users:  
Please read the “User's Manual” carefully before  
using this product and operate it correctly in  
accordance with the requirements of the manual

PRODUCT OVERVIEW



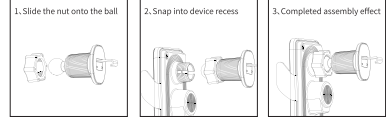
PACKAGING LIST

- Mainframe × 1 Air vent clip × 1  
Data cable × 1 Instruction manual × 1

INSTALLATION

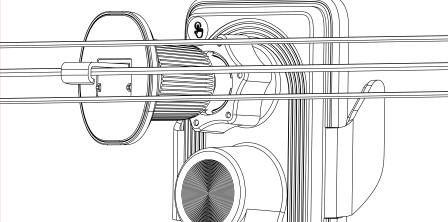
1.Assembly of equipment and air outlet clips

Slide the nut of the bracket over the ball of the air outlet clamp and snap  
the ball into the groove on the back of the unit.



2.Method of loading equipment onto a vehicle

1. Turn the J-type air vent clip metal piece to the appropriate length and then  
extend it into the top of the blade to fasten it.
2. Turn the center roller of the clamp clockwise and tighten it until it is firm.



PRODUCT PARAMETERS

1. Material: Shell PC/ABS
2. Wireless charging input: 5V/2A, 9V/1.67A
3. Wireless charging output: 15W, 10W, 7.5W, 5W automatic recognition
4. Charging power: 110K-205KHz
5. Charging distance: 0-6mm
6. Support specifications: devices that support QC wireless fast charging;  
Such as iPhone 8, iPhone 8+, iPhone X, iPhone 10, iPhone 11 series,  
iPhone 12, iPhone 13 series, iPhone 14 series, iPhone 15 series;  
Samsung S6 s6edge, s7, s7edge, s8, s8+Xiaomi, OPPO, vivo and other  
mobile phones with built-in wireless charging function.
7. Execution standards: GB 4943.1-2022

Function Introduction

It is recommended to use a 9V car charger to power the product.  
If you need to use the car's built-in fast charging Type-C port  
(please equip yourself with a dual-head Type-C port data cable)

ⓧ Do not use the car's built-in USB port!

1. Introduction to Charging Function

1. When the device is connected to a power source, place the mobile phone with  
built-in wireless charging function on it to perform 15W wireless charging.  
(The wireless charging switch can be controlled by the program)
2. Reserve a hole for mobile phone charging at the foot support position of the device.

2. Introduction of Sensing Function

1. When the device is connected to a power source, place the phone close to the  
front of the bracket, the clamp arm will automatically open, and then  
automatically close to lock the phone.  
(The infrared sensor switch can be controlled by the program)
2. Touch the upper sensing area on the back of the device to open  
and close automatically.
3. After turning off the infrared sensor using the program, you can only use touch  
to open and close automatically. When the device is not connected to a power  
source, the infrared sensing function will be automatically turned off.

3. Introduction to the screen projection function

1. When the device is connected to a mobile phone, you can use the animated  
images/pictures/phrases in the app or custom pictures, input text/license plates  
for screen projection.If you need to use more custom materials, please contact  
the purchase merchant to obtain them!

\*When the device is not connected to a power source, Bluetooth cannot be used.  
Only when the device is powered on, Bluetooth will automatically turn on

USING THE PROGRAM

Equipment Function Introduction

- ① The official material station has a large number of original  
material inside including [motion picture/image/phrase]  
can be used for screen casting.
- ② Image projection is a process in which users project their favorite  
images onto the device.
- ③ Phrase screen mirroring is the process of projecting a piece of text entered  
by a user, which can be used as a memo.
- ④ License plate casting is able to input your own license plate  
to cast the screen can input new energy model license plate.
- ⑤ The wireless charging switch is to set the wireless charging  
function of the product device on or off.
- ⑥ The infrared sensing modes are “Normal On” and “Long Term Off”  
When you set “Normal On”, the infrared function will be kept on,  
and will be turned off automatically if the device is not connected to the power supply.  
When you set “Long Term Off”, the infrared function will stop working.
- ⑦ Restore Factory Settings button You can restore all the function settings of the device,  
including the material for screen casting, to the default state.

PROGRAM CONNECTION

Please scan the QR code on the right to open the page  
Download the software APP to use with



To connect the device:

- 1.Make sure the product device is connected to  
the power supply
- 2.Keep your cell phone with Bluetooth on
- 3.Open the small program or APP click scan
- 4.Nearby devices will automatically pop up the  
connection window
- 5.Click connect to jump to the device control window

MATTERS NEEDING ATTENTION

1. Do not squeeze or hit the equipment excessively.
2. Do not use the device in a severely hot, humid or  
corrosive environment to avoid damage to the  
device's circuitry.
3. Do not disassemble, hit, soak in water or throw  
into fire.

Thank you for your use!



**FCC Warning Statement:** Changes or modifications to this unit not expressly approved by the party responsible for compliance could void the user's authority to operate the equipment. This equipment has been tested and found to comply with the limits for a Class B digital device, pursuant to Part 15 of the FCC Rules. These limits are designed to provide reasonable protection against harmful interference in a residential installation. This equipment generates, uses and can radiate radio frequency energy and, if not installed and used in accordance with the instructions, may cause harmful interference to radio communications.

However, there is no guarantee that interference will not occur in a particular installation. If this equipment does cause harmful interference to radio or television reception, which can be determined by turning the equipment off and on, the user is encouraged to try to correct the interference by one or more of the following measures:

- Reorient or relocate the receiving antenna.
- Increase the separation between the equipment and receiver.
- Connect the equipment into an outlet on a circuit different from that to which the receiver is connected.
- Consult the dealer or an experienced radio/TV technician for help.

This device complies with Part 15 of the FCC Rules. Operation is subject to the following two conditions: (1) this device may not cause harmful interference, and (2) this device must accept any interference received, including interference that may cause undesired operation.

#### **FCC Radiation Exposure Statement**

The device has been evaluated to meet general RF exposure requirement. The device can be used in portable exposure condition without restriction.