

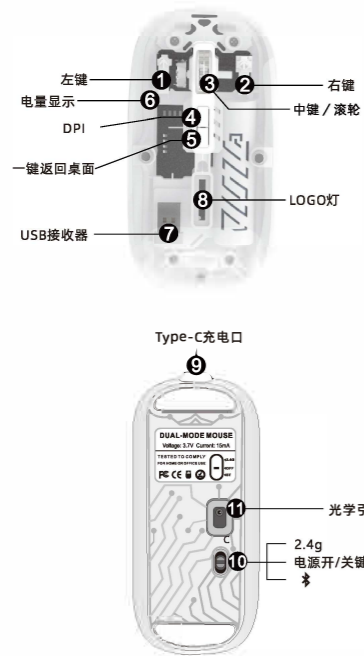
尺寸: 60*100mm
 材质: 70G铜版纸+正反面印刷

使用手册



在使用本产品前请仔细阅读好使用手册!

产品示意图



操作说明

USB连接

- 第一步: 将接收器插入计算机USB端口。
- 第二步: 参照鼠标底部标签上开关运行标识, 进行操作, 上开为2.4G模式, 即可进行正常工作。
- 第三步: 移动鼠标或按左右键即可正常使用。

蓝牙连接 (BT5.2Mouse)

- 第一步: 将鼠标底部的电源开关向下开到底部蓝牙位置, 对应绿灯闪烁, 开始进入蓝牙对码状态。
- 第二步: 打开平板/电脑/手机, 点击设置菜单中的“蓝牙”界面, 连接配对鼠标 (BT5.2Mouse), 连接上设备后随即绿灯熄灭, 进入正常模式。
- 第三步: 移动鼠标或按左右键即可正常使用。

双模切换方式

开关为三档切换模式, 向上开为2.4G无线, 中间为空格, 向下开为蓝牙链接方式

充电方式

建议使用电脑USB接口, 对鼠标进行充电, 充电时⑩最前一格电量灯闪烁提示。充满时⑩电量灯常亮。

低电量提示

当鼠标快没电的时候, ⑩电量灯最后一格闪烁报警提示。

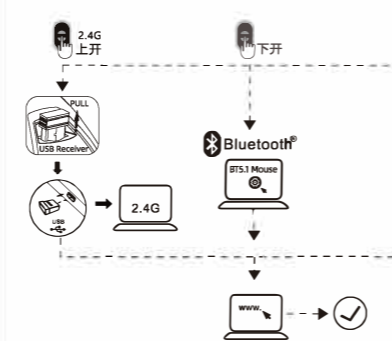
产品参数

鼠标大小	L113*W57*H27mm
产品材质	ABS
产品重量	76±5g
工作模式	2.4G+BT5.2 Mouse
工作电流	15mA
电池容量	500mAh
工作方式	光学技术
DPI	800-1200-1600

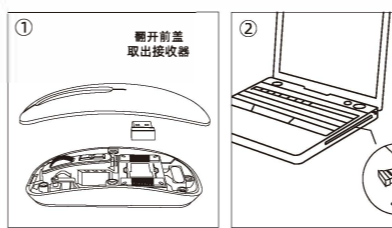
使用说明和注意事项

1. 当鼠标光标移动缓慢时, 请检查电池是否电量不足, 建议及时充电。
2. 当鼠标无法连接时, 请检查鼠标底部的电源开关是否打开, 并选择正确的连接方式或将USB接收器移动到其它USB端口使用。
3. 如果长时间不使用鼠标, 请手动关闭电源开关, 以节省电源。
4. 鼠标长时间不使用, 会自动进入休眠模式, 移动鼠标或按任意键唤醒鼠标。
5. 请勿拆卸或试图修复本产品, 因为这样做可能导致损伤。

鼠标连接设备示意图



接收器说明



请在使用产品之前阅读手册

电池使用警告! 电池如果更换不当, 则可能存在泄漏或爆炸及造成人身伤害的危险。如果单独为错误的电池类型, 可能引起火灾或爆炸的风险。请参阅所附说明, 确保电池的正确安装。可充电电池如果处置不当, 则可能存在火灾或化学烧伤的危险。切勿拆卸或拆电池与导电材料、液体接触, 或暴露于温度超过54°C (130°F) 的环境中。处于较低气压下的电池可能会导致爆炸或者是易燃液体或气体泄漏。切勿在电池出现泄漏、变色、变形或出现任何其他异常的情况下使用或充电。不要让电池长时间处于放电或不使用的状态。切勿短路。您的设备可能包含内置可充电电池, 此电池不可更换。电池寿命随使用情况而异。已报废电池应当依据当地法律进行弃置。如果没有相关法律或法规, 请将您的设备丢弃在用于电子设备的垃圾箱中。应将电池放置于远离儿童的地方。

1类激光产品: 本产品符合国际标准IEC/EN60825-1: 2014, 1类激光产品规定, 同时符合21 CFR 1040.10规定, IEC 60825-1 Ed.3 除外, 如2019年5月8日发布的第56号 Laser Notice (激光公告) 中所述。最大功率716微瓦CW, 发射波长832-865纳米; 工作温度在0°C-40°C。

警告! 如果不按照此处指定的程序进行控制、调整或操作, 则可能导致辐射伤害。**警告!** 请避免长时间直接以眼睛和/或皮肤接触激光光束, 可能导致烧伤。**本产品包含1类LED。** 操作温度在0°C至40°C之间

1M类激光产品: 本产品符合国际标准IEC/EN60825-1: 2014, 1M类激光产品的相关规定, 同时符合21 CFR 1040.10的要求, IEC 60825-1 Ed.3 除外, 如2019年5月8日发布的第56号 Laser Notice (激光公告) 中所述。不可见红外光发射至少2°的辐射光束; 最大功率为1.4毫瓦的连续波, 发射的波长范围832-865纳米; 操作温度0°C至40°C。**警告!** 激光辐射。使用光学放大仪器在100毫米距离内查看激光输出可能造成眼睛伤害。

使用指南-安全正确地使用产品:

- 除电池移除和更换外, 请勿自行拆卸或改装产品。
- 请勿拆卸或尝试维修本产品, 因为这样做可能会导致辐射伤害。
- 请勿将红外/激光光束指向任何人的眼睛或反射物体。
- 请勿将产品浸入任何液体中, 或暴露在炎热或潮湿的环境中。
- 如果将产品暴露于超出既定温度范围的环境中, 则切断电源设备, 直至温度在指定的操作温度范围内达到稳定。
- 本产品仅可使用随附的电源, 不得改装电源。不得在雷雨天气时为产品充电。
- 使用本产品请搭配所列/认证的ITE电脑和附件。
- 本产品不适合儿童使用, 14岁以下儿童为非预期用户。
- 如果使产品长时间处于单一动作, 则可能导致手部、手腕、胳膊、肩部、颈部或背部的神经、肌腱或肌肉损伤。如果存在疼痛、麻木、酸软无力、肿胀、灼痛、抽筋或僵硬等症状, 请向合格的专业保健人士咨询。
- 在正常和合理可预见的操作条件下, 本产品不存在安全隐患。如果产品运行不正常, 请致电支持人员, 如需任何服务或维修, 请务必将产品送回相关部门。
- 未经明确批准而对本产品进行的任何改装或改造都将导致用户丧失操作本产品的权利和产品保修失效。

警告! 电池、电子设备和电气设备不应与生活垃圾一同处理。只要情况允许, 应将废弃物带到适当的收集点, 以便回收利用, 并避免对环境和人类健康的潜在影响。**回收!** 欲了解更多信息, 请联系当地主管部门或购买点。

产品中有毒物质的名称及含量 根据中国《电子电气产品有害物质限制使用标识要求》

部件名称 Parts Name	有害物质 Hazardous Substances					
	铅 (Pb)	汞 (Hg)	镉 (Cd)	六价铬 (Cr(VI))	多溴联苯 (PBB)	多溴二苯醚 (PBDE)
电源线 Cable	X	○	○	○	○	○
电源按钮 PWAs	X	○	○	○	○	○
塑料外壳 Plastic enclosure	○	○	○	○	○	○
玻璃部件 Glass parts	X	○	○	○	○	○
金属部件 Metal parts	X	○	○	○	○	○
电池 Battery	X	○	○	○	○	○

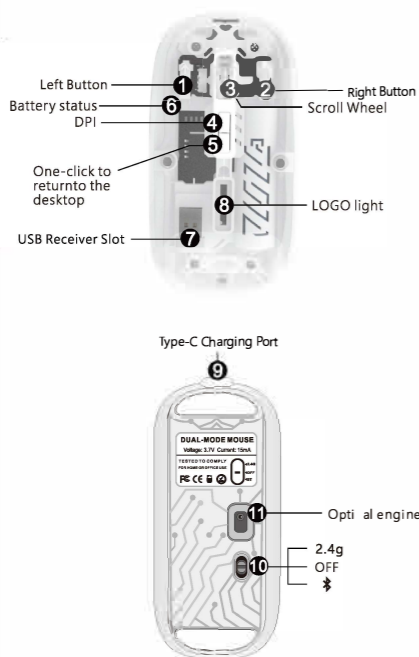
本表格依据SJ/T11364的规定编制
 ○=表示该有害物质在该部件所有均质材料中的含量均在GB/T26572标准规定的限量要求以下。
 X=表示该有害物质至少在该部件的某一均质的含量超出GB/T26572标准规定的限量要求。
 表中有“X”的所有部件都符合欧盟RoHS Recast法规-2011/65/EU指令。
 此表显示的电子电气产品部件中何处存在这些有害物质, 请注意并非内该产品都包含上述所有部件。
 注: 环保使用期限的参考值取决于产品正常工作温度和湿度等条件。

USER MANUAL



Please read the manual carefully before using this product!

Product Function Diagram



Instructions

USB connection

- Step 1: Plug the receiver into your computer's USB port.
- Step 2: Refer to the mouse at the bottom of the label on the switch to run identification, operation, up to 2.4 G mode, you can carry out normal work.
- Step 3: Move the mouse or press the left/right button to use it normally.

Bluetooth connection (BT5.2Mouse)

- Step 1: The power switch at the bottom of the mouse down to the bottom of the Bluetooth position, corresponding to the flashing green light, began to enter the Bluetooth code state.
- Step 2: Open the tablet/computer/phone, click the "Bluetooth" interface in the settings menu, Connect the pairing mouse (BT5.2Mouse). After the device is connected, the green light goes off, Enter normal mode.
- Step 3: Move the mouse or press the left/right button to use it normally.

Dual-mode Switching Method

Switch to three-gear switch mode, up to 2.4 g wireless, the middle for the neutral, down to open Bluetooth Link mode

Charging Method

It is recommended to use the USB interface of the computer to charge the mouse. When the mouse is charged, the battery light at the front of the ⑩ cell flashes. The ⑩ battery light is always on when fully charged.

Battery Warning

When the mouse is about to run out of power, the last bar of the ⑩ battery light flashes an alarm prompt.

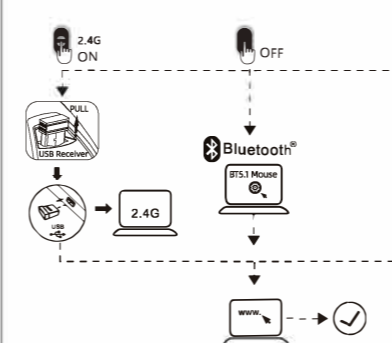
Product parameters

Mouse size	L113*W57*H27mm
Product material	ABS
Product Weight	76±5g
Working mode	2.4G+BT5.2 Mouse
Working current	15mA
Battery capacity	500mAh
Working range	Optical technology
Four gears of DPI	800-1200-1600

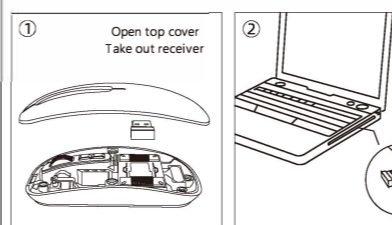
Instructions and precautions for use

1. When the mouse cursor moves slowly, check whether the battery is low. Suggest timely charging
2. If the mouse cannot be connected, check whether the power switch at the bottom of the mouse is on and select a correct connection mode or move the USB receiver to another USB port.
3. If you do not use the mouse for a long time, manually turn off the power switch to save power.
4. If you do not use the mouse for a long time, it will automatically enter the sleep mode, move the mouse or press any key to wake up the mouse.
5. Please do not remove or try to repair the product, because doing so may cause damage.

Easy Manual



Receiver Description



Read Manual Before product Use.

BATTERY WARNING! Improperly replaced batteries may present a risk of leak or explosion and personal injury. Risk of fire or explosion if the battery is replaced by an incorrect type. Ensure batteries are installed correctly by following the instructions provided. Mistreated rechargeable batteries may present a risk of fire or chemical burn. Do not disassemble or expose to conducting materials, moisture, liquid, or heat above 54°C (130°F). A battery subjected to extremely low air pressure may result in an explosion or the leakage of flammable liquid or gas. Do not use or charge the battery if it appears to be leaking, discolored, deformed, or in any way abnormal. Do not leave your battery discharged or unused for extended periods. Do not short circuit. Your device may contain an internal, rechargeable battery that is not replaceable. Battery life varies with usage. Non-operational batteries should be discarded according to local laws. If no laws or regulations govern, dispose of your device in a waste bin for electronics. Keep batteries away from children.

Class 1 Laser product: This product complies with International Standards IEC/EN 60825-1:2014, Class 1 Laser product, and also complies with 21 CFR 1040.10 except for conformance with IEC 60825-1 Ed. 3, as described in Laser Notice No. 56, dated May 8, 2019. Maximum power of 716 microwatts CW. Emitted wavelength is 832-865 nm; Operating temperature between 0°C and 40°C.

WARNING! Use of controls, adjustments or performance of procedures beyond those specified herein may result in hazardous radiation exposure.
WARNING! Avoid prolonged direct eye and/or skin contact with the laser aperture. May result in potential burn injury.

The product contains Class 1 LED. Operating temperature between 0°C and 40°C.
Class 1M Laser product: This device complies with International Standard IEC/EN 60825-1:2014, Class 1M Laser product, and also complies with 21 CFR 1040.10 except for conformance with IEC 60825-1 Ed. 3, as described in Laser Notice No. 56, dated May 8, 2019. Emission of diverging beam of minimum +/2° of infrared user-invisible light; Maximum power of 1.4 milliwatts CW, Emitted wavelength is 832-865 nm; Operating temperature between 0°C and 40°C.

WARNING! Laser Radiation. Viewing the laser output with magnifying optical instruments within a 100mm distance may pose an eye hazard.

Use Guidelines-Safe & Proper Use of Your Product:

- Do not open or modify the product except for battery removal and replacement.
- Do not disassemble or attempt to service this product because there is a risk of radiation exposure, which could injure you.
- Do not direct the infrared/laser beam at anyone's eye or a reflective object.
- Do not immerse product in any liquid or expose to heat or moisture.
- If product is exposed to out-of-range temperature environments, power off the device until temperature has stabilized within the specified operating temperature range.
- Use only provided power supply devices with this product. Do not modify the power supply. Do not charge your product during an electrical storm.
- Use the product with listed/certified ITE computers and accessories.
- This is not a Children's Product and is not intended for use by children under 14 years old.
- Long periods of repetitive motion using the product may be associated with nerve, tendon or muscle injury in your hands, wrists, arms, shoulders, neck or back. See a qualified health professional for pain, numbness, weakness, swelling, burning, cramping, or stiffness.
- This product is safe under normal any reasonably foreseeable misuse operating conditions. If the product is operating improperly, contact support, product must be returned or any service or repair.
- Any changes or modifications to the product that are not expressly approved may void the user's authority to operate the equipment and your warranty.
- Batteries, electronic and electrical equipment should not be disposed of with household waste. Wherever possible, they should be segregated and brought to an appropriate collection point to enable recycling and avoid potential impacts on the environment and human health. For more information, contact your local authorities or place of purchase.

This device complies with Part 15 of the FCC Rules. Operation is subject to the following two conditions: (1) this device may not cause harmful interference, and (2) this device must accept any interference received, including interference that may cause undesired operation

NOTE: This equipment has been tested and found to comply with the limits for a Class B digital device, pursuant to Part 15 of the FCC Rules. These limits are designed to provide reasonable protection against harmful interference in a residential installation. This equipment generates, uses and can radiate radio frequency energy and, if not installed and used in accordance with the instructions, may cause harmful interference to radio communications. However, there is no guarantee that interference will not occur in a particular installation.

If this equipment does cause harmful interference to radio or television reception, which can be determined by turning the equipment off and on, the user is encouraged to try to correct the interference by one or more of the following measures:

- Reorient or relocate the receiving antenna.
- Increase the separation between the equipment and receiver.
- Connect the equipment into an outlet on a circuit different from that to which the receiver is connected.
- Consult the dealer or an experienced radio/TV technician for help.

Warning: changes or modifications not expressly approved by the party responsible for compliance could void the user's authority to operate the equipment

The device has been evaluated to meet general RF exposure requirements, the device can be used in portable exposure condition without restriction