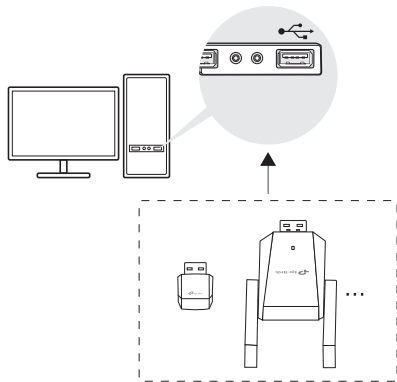


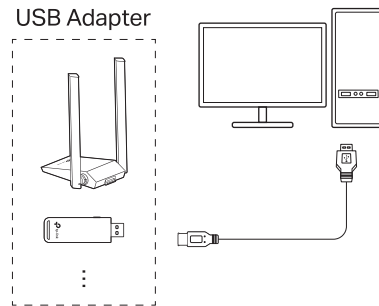
## Wireless USB Adapter

# 1 Connect to a Computer

### Option 1: Directly



### Option 2: Via the USB Extension Cable (if provided)



# 2 Install Driver




- This adapter supports **Plug and Play** feature. Plug the adapter in and then it is ready to use.
- If your operating system does not support this feature, follow the steps below:
  - a. Download the driver or check the new release at <https://www.tp-link.com/download-center>.
  - b. Unzip the downloaded folder and run the **Setup.exe**.
  - c. Select **your adapter** and follow the instructions to complete the installation.

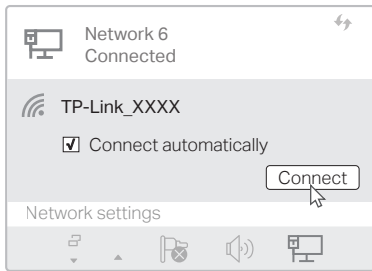
#### Notes:

- If you can't install the driver successfully, disable the antivirus software and firewall, then try again.
- In Windows 7, if a Windows Security message pops up, refer to **Troubleshooting > T4**.
- If an unknown publisher message pops up, select Yes to continue.
- If Windows User Account Control requires admin credentials, type user name and password of your Windows administrator account.

## 3 Join a Wireless Network

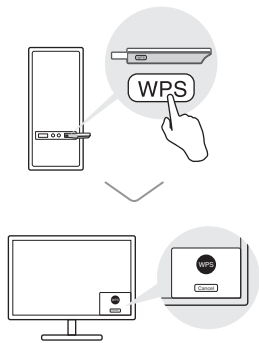
### Option 1: Via Windows Wireless Utility

- Click the network icon on the taskbar (the icon might look like one of these: , , or ).
- Select your Wi-Fi network, click **Connect** and enter the password when prompted.



### Option 2: Via WPS Tool (If your adapter has a WPS button)

- Press the WPS button on your router.
- Within 2 minutes, press and hold the WPS button on the adapter until WPS Tool opens.



## Troubleshooting

If you have problems during the installation, please refer to the following online FAQs.

### T1. Can't find the hardware version of the adapter:

<https://www.tp-link.com/faq-46.html>

### T2. Can't find or connect to the wireless networks:

<https://www.tp-link.com/faq-2253.html>

### T3. Can't install the driver:

<https://www.tp-link.com/faq-2252.html>

### T4. How to fix Windows 7 Security issue:

<https://www.tp-link.com/faq-2760.html>

## Support

For technical support, replacement services, user guides, and other information, please visit <https://www.tp-link.com/support>, or simply scan the QR code.



- Do not attempt to disassemble, repair, or modify the device. If you need service, please contact us.
- Do not use the device where wireless devices are not allowed.
- Keep the device away from water, fire, humidity or hot environments.
- This equipment can be powered only by equipments that comply with Power Source Class 2 (PS2) or Limited Power Source (LPS) defined in the standard of IEC 62368-1.

TP-Link hereby declares that the device is in compliance with the essential requirements and other relevant provisions of directives 2014/53/EU, 2011/65/EU and (EU) 2015/863. The original EU Declaration of Conformity may be found at <https://www.tp-link.com/en/support/ce>

TP-Link hereby declares that the device is in compliance with the essential requirements and other relevant provisions of the Radio Equipment Regulations 2017. The original UK Declaration of Conformity may be found at <https://www.tp-link.com/support/ukca>