

# Smart Wi-Fi Door Lock

Tapo DL105

Quick Start Guide



**Visit [www.tapo.com/support](http://www.tapo.com/support)**

for technical support, user guides, warranty,  
and more information



# Welcome to Tapo!

## Installation Guide & Video

Scan QR code or visit  
<https://www.tp-link.com/support/faq/4422/>



---

## Contact Us

Our expert Technical Support team is ready to assist you. Please don't hesitate to reach out with any questions.



**EMAIL**



**CHAT**



**CALL**

<https://www.tp-link.com/support/contact-technical-support/>



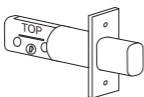
# Contents

Parts in the Box	— — — — — — — — — —	1
Installation Preparation	— — — — — — — —	5
Installation	— — — — — — — — — —	10
Setup	— — — — — — — — — —	24
How to set the PIN code & register your fingerprint	— — — — — — —	26
What if the battery is dead while you are outside?	— — — — — — —	27
Appearance	— — — — — — — — — —	28

# Parts in the Box

## Install the Bolt & Strike Plate

### Packaged Together



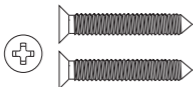
Bolt



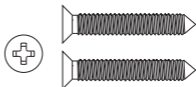
Strike Plate



Dust Box



Bolt Screws  
(ST4\*25)×2

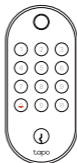


Strike Plate Screws  
(ST4\*25)×2

## Install Exterior Assembly

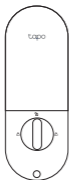


Installation Reference  
Line Sticker for  
Exterior Assembly



Exterior  
Assembly

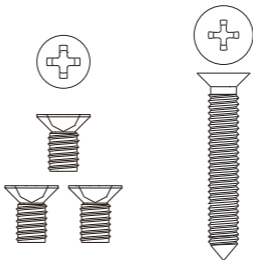
## Install Interior Assembly



Interior  
Assembly

### Actual Size

(M4\*7.5)×3 (ST4\*20)×1



## Install the Interior Mounting Plate



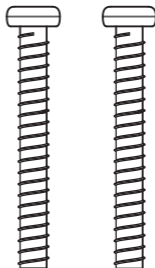
Mounting  
Plate



Installation  
Reference Line  
Sticker for Interior  
Assembly

Actual Size

(M4\*32)×2



## Others



Battery Pack



Keys ×2



Silicone  
Cover



USB Adapter  
Cable



Measuring  
Template



Quick Start  
Guide

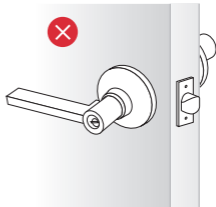
# Installation Preparation

# Check Compatibility

## 1. Check your existing door lock type.



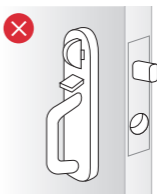
Compatible with Single  
Cylinder Deadbolt



Lever Handle Lock Not  
Compatible



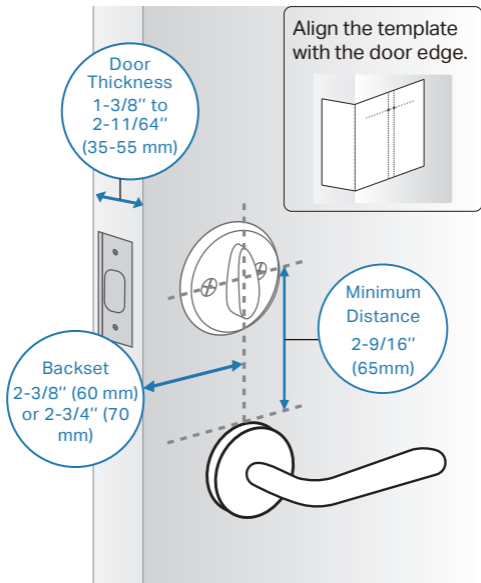
Integrated Locks  
Not Compatible



Mortise Locks  
Not Compatible

## 2. Measure your door.

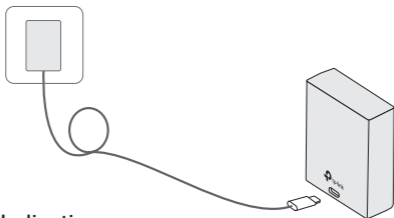
Place the measuring template on the door, aligning its door edge line with the door edge.



# Charge Your Battery

## ● When the battery is not installed

Plug the provided USB cable into the battery pack's Type-C port, then connect it to a power outlet via a USB adapter with 5V output.



### LED Indication:

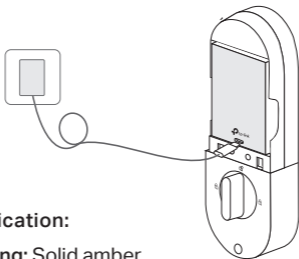
- **Charging:** Solid amber
- **Fully charged:** Solid green

### Note:

1. Charge the battery before use. This will take a few hours. It is recommended to use a 5V/2A adapter for best charging performance.
2. The USB adapter is not provided.

## ● When the battery is installed

Remove the battery cover. Plug the provided USB cable into the battery pack's Type-C port, then connect it to a power outlet via a USB adapter with 5V output.



### LED Indication:

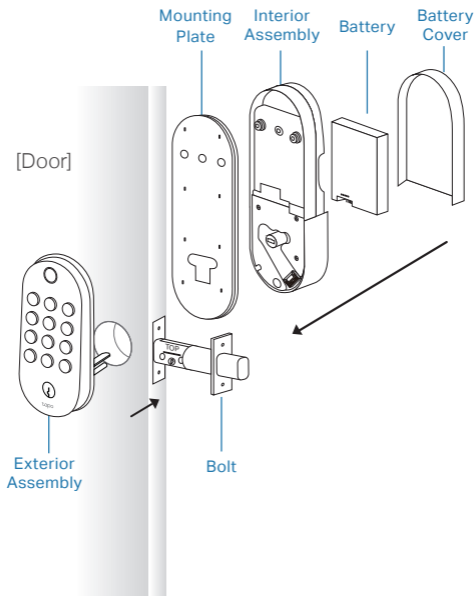
- **Charging:** Solid amber
- **Fully charged:** Solid green

### Note:

1. Charge the battery before use. This will take a few hours. It is recommended to use a 5V/2A adapter for best charging performance.
2. The USB adapter is not provided.

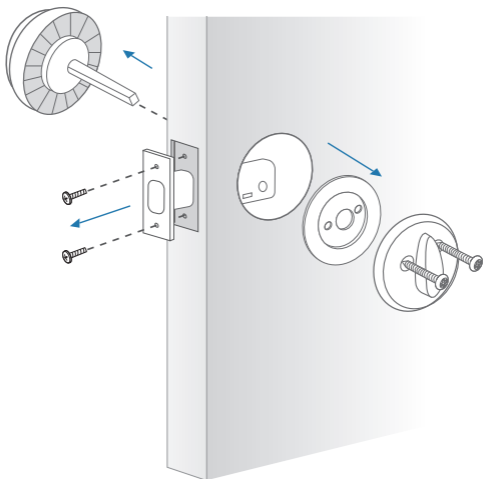
# Installation

# Installation Overview



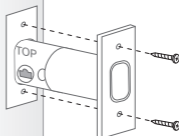
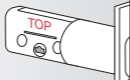
# **1** Remove your existing lock.

Remove your existing door lock and bolt.

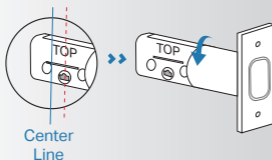


## 2 Install the new bolt.

- A** Ensure the word **TOP** is facing up.



- B** If the latch hub is not centered in the door hole, twist the bolt to extend it.



### Bolt Screws

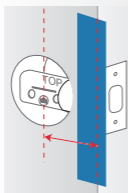
Packaged together with the bolt



### 3 Install the exterior assembly.

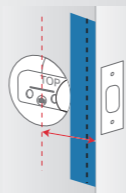
- A** Place the **exterior assembly sticker** on the outside door by aligning its door edge line with your door edge.

Note: Choose the door edge line based on your backset distance.



Backset  
2-3/8" (60 mm)

OR

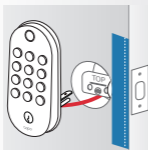


Backset  
2-3/4" (70 mm)

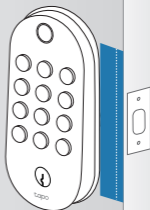
[OUTSIDE]



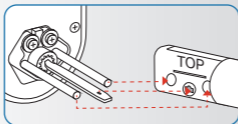
- B** Route the cable under the bolt.



[OUTSIDE]



- C** Insert the tailpiece and two prongs into the corresponding holes on the bolt and align the exterior assembly with the sticker.

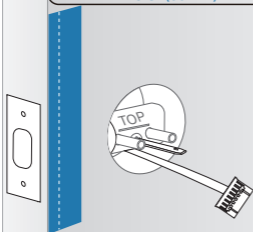
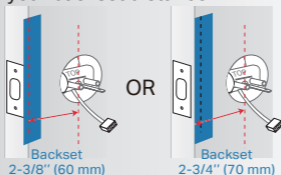


## 4

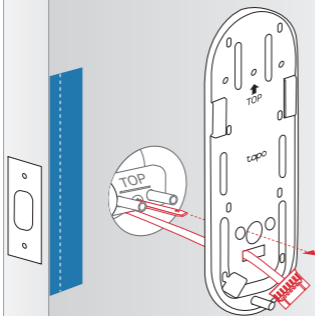
## Install the mounting plate.

- A** Place the **interior assembly sticker** on the inside door by aligning its door edge line with your door edge.

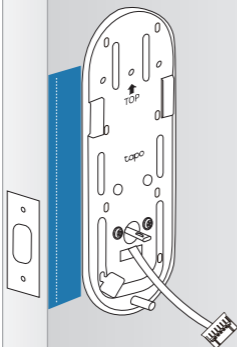
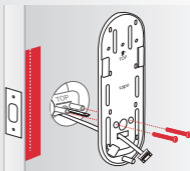
Note: Choose the door edge line based on your backset distance.



- B** Route the cable through the mounting plate's rectangular hole and insert the tailpiece into the center round hole.

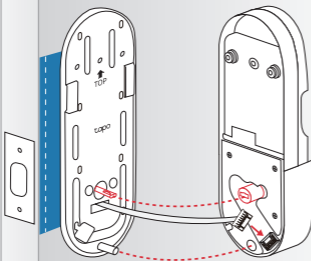


- C** Align the mounting plate with the sticker, ensuring the two prongs of the exterior assembly match the two holes next to the center round hole. Secure it with the screws.



## 5 Install the interior assembly.

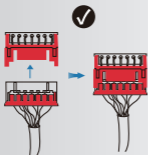
[INSIDE]



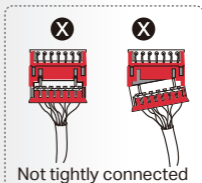
- A** Remove the battery cover.

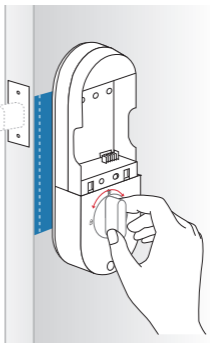
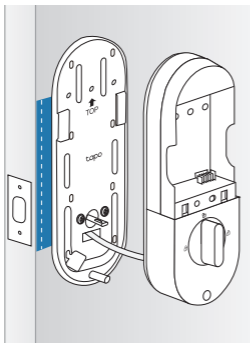


- B** Connect the cable tightly. Ensure the color side faces up.

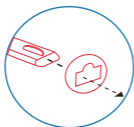


Red marking facing up

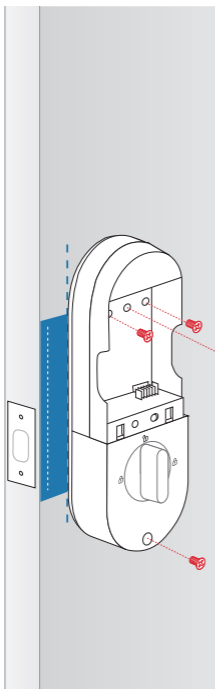




- C** Align the tailpiece with the key cylinder. Attach the interior assembly to the mounting plate.



- D** Rotate the thumb latch to ensure the latch retracts normally.



- E** Use the **three** provided M4\*7.5 screws to affix the interior assembly.

**M4\*7.5 Screws**



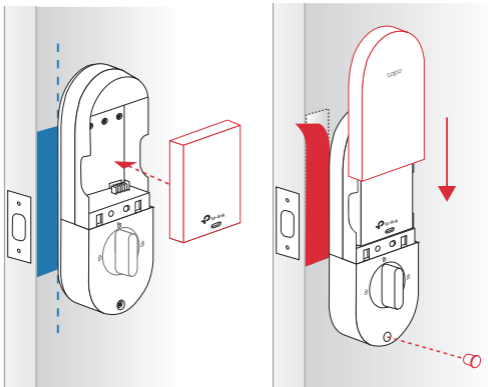
(Optional)

- F** (Optional) Use the provided ST4\*20 screw to secure the interior assembly.

**ST4\*20 Screw**



## 6 Install the battery.

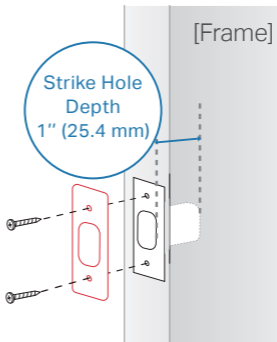
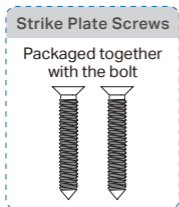


**A** Insert the battery into the interior assembly.

**B** Replace the cover by sliding it down. Insert the silicone cover into the bottom hole. Remove the stickers.

## 7 Install the dust box & strike plate.

Insert the dust box and strike plate into the strike hole on the door frame and secure with screws. Ensure the depth of the strike hole is at least 1" (25.4 mm).



If the bolt operates smoothly without pushing or pulling the door, you can use your original strike plate.

If you need to push or pull the door for smooth operation, adjust the strike plate's position on the door frame.

# Setup

# Set Up Your Lock

1. Get the **Tapo** app from the App Store or Google Play and log in with your TP-Link ID. If you do not have an account, create one first.



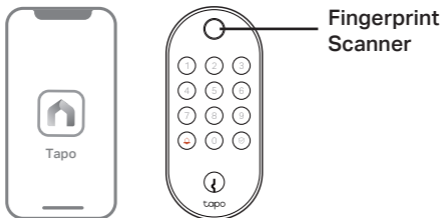
2. Tap the ⊕ button in the app. Select **Door Locks** and then your model. Follow the app instructions to complete setup.



The Tapo app is needed to use this lock. If this lock was professionally installed (or installed by someone other than the homeowner), make sure this step was performed by the homeowner.

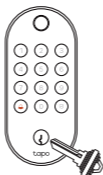
# How to set the PIN code & register your fingerprint

The PIN code and fingerprint should be set in the Tapo app. Tapo will guide you to set your PIN code and register your fingerprint.



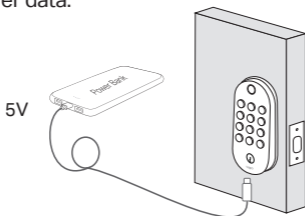
# What if the battery is dead while you are outside?

- **Unlock via the provided key**



- **Temporarily power up the lock**

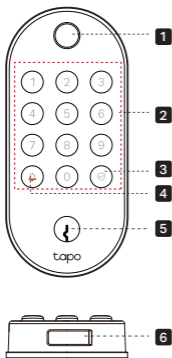
Connect to a power outlet or power bank using a USB cable to provide a temporary power supply. Note that this port is for power only and cannot transfer data.



# Appearance

# Appearance

## Exterior Assembly



### **1 Fingerprint Scanner**

Register your fingerprint.

### **2 Key Pad**

Lock/unlock the door by entering your PIN code.

### **3 Lock/Unlock Button & Indicator**

#### **Button:**

- When entering the PIN code with scrambled digits, press this button to confirm unlocking.
- When the door is unlocked, press this button to lock it.

#### **Indicator:**

Indicates the lock/unlock status and device status.

### **4 Ring Button**

When this button is pressed, the interior assembly will ring and you will receive app notifications.

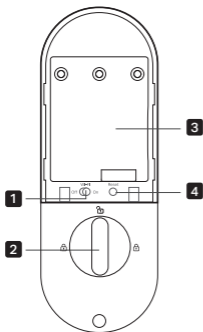
### **5 Lock Cylinder**

Unlock via the provided keys.

### **6 5V Type-C Port**

Connect to a power outlet for a temporary power supply.

## Interior Assembly



### **1 Wi-Fi On/Off Button**

Turn on Wi-Fi and connect to a Wi-Fi network for remote control.

Turn off Wi-Fi and only control locally via Bluetooth.

Note: When Wi-Fi is toggled off, sync the time in the app every time you re-install the battery.

### **2 Thumb Latch**

Rotate to lock/unlock the door.


### **3 Battery Compartment**

Insert the provided battery to power your lock.

### **4 Reset**

- Press and hold for 5s to reset Wi-Fi settings.
- Press and hold for 10s to factory reset your device.

# Lock/Unlock Indicator

 Indicator Display	Situation
Solid blue	Being unlocked; Unlocking successful
Solid yellow	Being locked; Locking successful
Solid red	Locking/unlocking failed
Solid red	Door lock jammed; Too many failed unlocking attempts
Blinking red and green	Ready for setup

## Specifications

Type-C Emergency Power Supply: 5V 

Battery: 3.6V 

Rainproof Rating: IP54 (only for the exterior assembly)

## Safety Information

- Do not attempt to disassemble, repair, or modify the device. If you need service, please contact us.
- Do not use the device where wireless devices are not allowed.
- Keep the device away from water, fire, humidity or hot environments.
- Do not place near automatically controlled devices such as fire alarms.  
Radio waves emitted from this product may cause such devices to malfunction resulting in an accident.
- Observe restrictions on using wireless products in fuel depots, chemical plants or when blasting operations are in progress.
- Never put metal objects inside the product. If a metal object enters the product turn off the circuit breaker and contact an authorised electrician.
- This product is not intended to be used when providing medical care. Consult the manufacturer of any personal medical devices, such as pacemakers or hearing aids to determine if they are adequately shielded from external RF (radio frequency) energy.
- Do not use this product in health care facilities. Hospitals or health care facilities may be using equipment that could be sensitive to external RF energy.
- Ensure to use a power bank or 5V power adapters when temporarily powering up the device.
- Exterior Assembly Operating Temperature: -30 °C ~ 70°C (-22°F ~ 158°F)

Please read and follow the above safety information when operating the device. We cannot guarantee that no accidents or damage will occur due to improper use of the device. Please use this product with care and operate at your own risk.

### CAUTION!

Risk of fire or explosion if the battery is replaced by an incorrect type

### CAUTION!

Avoid replacement of a battery with an incorrect type that can defeat a safeguard. Avoid disposal of a battery into fire or a hot oven, or mechanically crushing or cutting of a battery, that can result in an explosion. Do not leave a battery in an extremely high temperature surrounding environment that can result in an explosion or the leakage of flammable liquid or gas. Do not leave a battery subjected to extremely low air pressure that may result in an explosion or the leakage of flammable liquid or gas.

\*Images may differ from your actual product.

This equipment has been tested and found to comply with the limits for a Class B digital device, pursuant to part 15 of the FCC Rules. These limits are designed to provide reasonable protection against harmful interference in a residential installation. This equipment generates, uses and can radiate radio frequency energy and, if not installed and used in accordance with the instructions, may cause harmful interference to radio communications. However, there is no guarantee that interference will not occur in a particular installation. If this equipment does cause harmful interference to radio or television reception, which can be determined by turning the equipment off and on, the user is encouraged to try to correct the interference by one or more of the following measures:

- Reorient or relocate the receiving antenna.
- Increase the separation between the equipment and receiver.
- Connect the equipment into an outlet on a circuit different from that to which the receiver is connected.
- Consult the dealer or an experienced radio/ TV technician for help.

This device complies with part 15 of the FCC Rules. Operation is subject to the following two conditions:

- 1) This device may not cause harmful interference.
- 2) This device must accept any interference received, including interference that may cause undesired operation.

Any changes or modifications not expressly approved by the party responsible for compliance could void the user's authority to operate the equipment.

Note: The manufacturer is not responsible for any radio or TV interference caused by unauthorized modifications to this equipment. Such modifications could void the user's authority to operate the equipment.

This equipment complies with FCC RF radiation exposure limits set forth for an uncontrolled environment. This device and its antenna must not be co-located or operating in conjunction with any other antenna or transmitter.

"To comply with FCC RF exposure compliance requirements, this grant is applicable to only Mobile Configurations. The antennas used for this transmitter must be installed to provide a separation distance of at least 20 cm from all persons and must not be co-located or operating in conjunction with any other antenna or transmitter."

#### Canadian Compliance Statement

This device contains licence-exempt transmitter(s)/receiver(s) that comply with Innovation, Science and Economic Development Canada's licence-exempt RSS(s). Operation is subject to the following two conditions:

- (1) This device may not cause interference.
- (2) This device must accept any interference, including interference that may cause undesired operation of the device.

L'émetteur/récepteur exempt de licence contenu dans le présent appareil est conforme aux CNR d'Innovation, Sciences et Développement économique Canada applicables aux appareils radio exempts de licence. L'exploitation est autorisée aux deux conditions suivantes :

- 1) L'appareil ne doit pas produire de brouillage;
- 2) L'appareil doit accepter tout brouillage radioélectrique subi, même si le brouillage est susceptible d'en compromettre le fonctionnement.

Radiation Exposure Statement:

This equipment complies with IC radiation exposure limits set forth for an uncontrolled environment. This equipment should be installed and operated with minimum distance 20cm between the radiator & your body.

Déclaration d'exposition aux radiations:

Cet équipement est conforme aux limites d'exposition aux rayonnements IC établies pour un environnement non contrôlé. Cet équipement doit être installé et utilisé avec un minimum de 20 cm de distance entre la source de rayonnement et votre corps.

Industry Canada Statement

CAN ICES-003 (B)/NMB-003(B)