

Product Manual



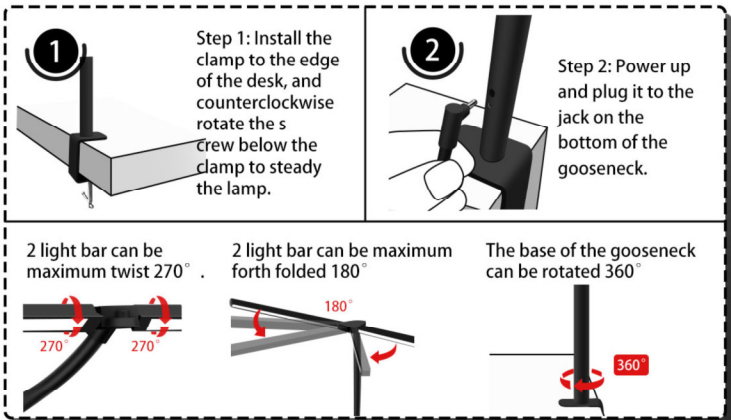
1

Notes on installation

- △ Please do not over twist the light bar and gooseneck
- △ Please make sure the power cord is plug into the jack on the bottom of the gooseneck entirely while using.

Preparation before use

Instructions



2

Functions introduction



- Click to automatically adjust the light to the most scientific eye protection mode.
- Click to automatically adjust the light to the anti-glare mode, which can effectively prevent screen glare.
- Click into night light mode.
- Click to set the timer function, press once and see the light shining to set the timer, press again to see shining two time to close the timer.
- Click to adjust 5 brightness (20%-40%-60%-80%-100%)
- Click to adjust 5 color temperatures (l)
- Click to simulate natural light.

3

- 1.Press once to turn on the light, twice to turn off the light.
- 2.Adjust brightness by long-pressing.
- 3.Press 1th while it on to adjust color tempreature.



4

Specification

Part No.	MT-615
CCT	3000K~6000K
Power	24W
Brigheness	1000lm±10%
Input	DC5V/2A or 24V/1A
CRI	Ra>97
Material	ABS+Iron+Rubber
Switch	Touching
Color	Black
Dimension	17.32 x 13.39 x 2.36 inches; 2.89 Pounds

5

Safety Precautions

Notice

Water washing is prohibited. Water washing may cause circuit failure due to water entering the product.

Please use the charging cable that comes with the product. If the charging cable is lost, please contact us.

Please do not over-bend the gooseneck and light bar in violence, otherwise it will cause damage to the internal wires.

Please do not approach open flames.

Please noticed that it is normal that the light will heat up when using.

Please do not shine the light directly into your eyes.

6

Warranty

365 days of quality assurance

Saimand promises that each product delivered to you has undergone rigorous quality inspection, and we provide 365 days of quality guarantee. If you encounter any problems during use, please contact us at any time.
Our after-sales mailbox: 17748567617@163.com

Troubleshooting

Troubles	Possible Cause	Recommended Action
The light is broken	Power cord loose	see if its plug in entirely
	one strip lighten another one not	try to rotate the strip
The remote is broken	change the battery(AAA)	
please contact us if still not working		

7

FCC Statement

This equipment has been tested and found to comply with the limits for a Class B digital device, pursuant to part 15 of the FCC Rules. These limits are designed to provide reasonable protection against harmful interference in a residential installation. This equipment generates, uses and can radiate radio frequency energy and, if not installed and used in accordance with the instructions, may cause harmful interference to radio communications. However, there is no guarantee that interference will not occur in a particular installation. If this equipment does cause harmful interference to radio or television reception, which can be determined by turning the equipment off and on, the user is encouraged to try to correct the interference by one or more of the following measures:

- Reorient or relocate the receiving antenna.
- Increase the separation between the equipment and receiver.
- Connect the equipment into an outlet on a circuit different from that to which the receiver is connected.
- Consult the dealer or an experienced radio/TV technician for help.

Caution: Any changes or modifications to this device not explicitly approved by manufacturer could void your authority to operate this equipment.

This device complies with part 15 of the FCC Rules. Operation is subject to the following two conditions: (1) This device may not cause harmful interference, and (2) this device must accept any interference received, including interference that may cause undesired operation.

RF Exposure Information
The device has been evaluated to meet general RF exposure requirement.
The device can be used in 0mm exposure condition, compliance with exposure requirements.