

remote controller Instructions

RUNVA wireless remote works lets you operate your winch from up to 75 ft without cables or switches. Just press the remote transmitter and you're ready to operate your winch Start, stop, in or out.

- ◆ Remote range up to 75 ft.
- ◆ Transmitter equipped with long life.
- ◆ Battery and power saver circuit.
- ◆ Transmitter & receiver.
- ◆ Visual indicator light shows remote operation.
- ◆ Additional transmitters available to operate receiver.
- ◆ Installs in minutes.
- ◆ Transmitter replacement battery readily available.

WARNING: The Wireless Remote is designed for use on front mount self-recovery winches only. The remote is not designed for and should not be used on winches or hoists in industrial applications (commercial car haulers/carriers, wreckers, cranes, etc.) or for any other remote controlled applications.

Type:

RWRC① - ② - ③ - ④ - ⑤

- ①: Signed as 01, 02. "01": Code learning Type; "02": Code Fixed.
- ②: Using Range admitted. Signed as E, C."E" : European Using Style; "C" Common style, this letter is always leave out;
- ③: Power Voltage, Signed as 12VDC or 24VDC.
- ④: Connector Style, using solely out of the winches control box. Signed as 03, 04. "03" : three cores connector;
"04" : four cores of connector.
- ⑤: mount type, Signed as 05.
"05" :small remote can fix in the winches control box.

Part List:

1. one transmitter.
2. one receiver with three or four cores of line with connector.

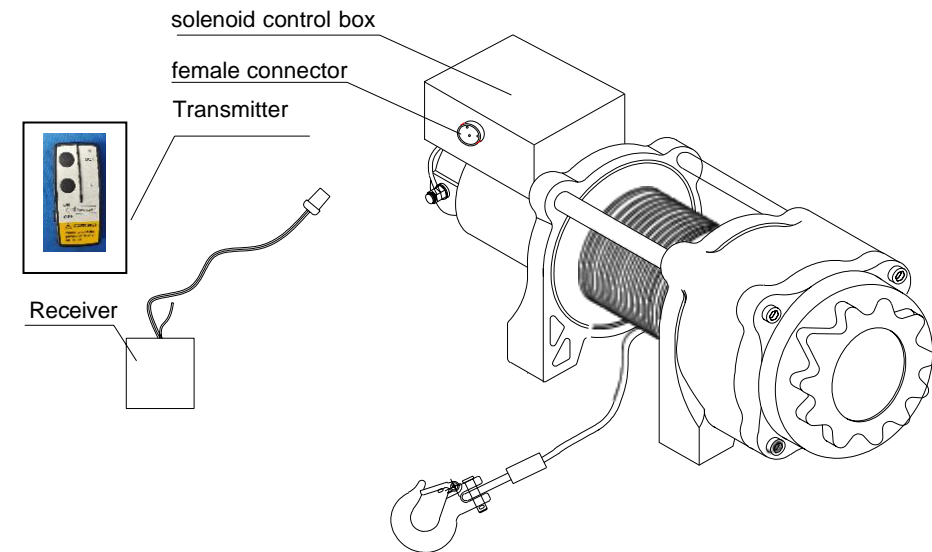
Installation and operating instructions:

There are two kinds of different connect way for the reason of different kinds winches' solenoid female connector. You can choice a suitable type of wireless remote control as RWRC—03 or RWRC—04. showing as the following connection drawing.

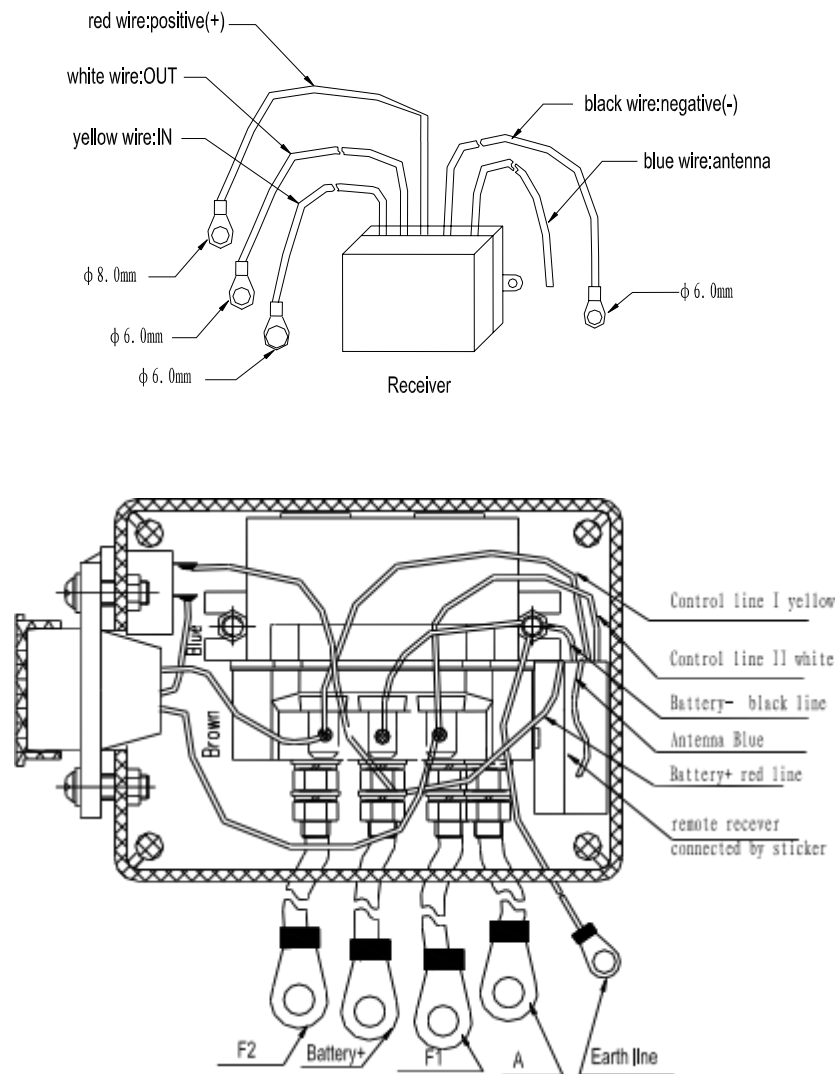
RWRC—03: While you insert the receiver plug to the winches' solenoid female connector, you shold connect the earth line to the battery negative. Be sure of the earth line connect exactly, then you can operate your winch by press the button on the transmitter.

RWRC—04: While you are ready to operate a winch, just connect the four cores of the recever to the winches' solenoid female connector. And then you can operate your winch by press the button on the transmitter. **NOTE:** Make sure one of the four pole receptacle is connected to earth.

"03", "04" connection drawing:



There is a small remote can be fixed in the winches control box:
RWRC—05: While your fixing according to the drawings showing as follows:



1. Disengage the clutch of your winch.
2. Pull out the winch wire rope about 1.5 meters.
3. Reengage the clutch of your winch.
4. Insert the plug of remote control receiver into the winches' solenoid control box female connector, if your wireless remote control is —03 type, you should properly connect the black earth line to the battery negative.
5. Put your receiver at a certain place.
6. Keep the antenna of receiver out and straight.
7. Pull out the antenna of transmitter, and move down the cover of your transmitter, bare out the control button.
8. Press the button, you can operate your winch start, stop, in and out.

Trouble Shooting:

SYMPTOM	POSSIBLE CAUSE	SUGGESTED ACTION
Motor turns, but Winch does not work,	Defective winch.	Check the winch Operating instructions.
Motor does not turn, but you can hear “Click” sound in the receiver	Receiver Loose connections to the winch.	Reinsert all the way.
	False Earth line cinnection	Ensure the earth connections.
	Defective winch.	Check the winch Operating instructions.
Motor runs in one direction only	Receiver Loose connections to the winch.	Reinsert all the way.
	Defective winch.	Check the winch Operating instructions.
No actions	Receiver and transmitter does not matching.	“01” Type : Code learn. “02” Type : return to the manufacture to rematch.

We suggest operate your winch as follows:

FCC Warning:

This equipment has been tested and found to comply with the limits for a Class B digital device, pursuant to part 15 of the FCC Rules. These limits are designed to provide reasonable protection against harmful interference in a residential installation. This equipment generates, uses and can radiate radio frequency energy and, if not installed and used in accordance with the instructions, may cause harmful interference to radio communications. However, there is no guarantee that interference will not occur in a particular installation. If this equipment does cause harmful interference to radio or television reception, which can be determined by turning the equipment off and on, the user is encouraged to try to correct the interference by one or more of the following measures:

- Reorient or relocate the receiving antenna.
- Increase the separation between the equipment and receiver.
- Connect the equipment into an outlet on a circuit different from that to which the receiver is connected.
- Consult the dealer or an experienced radio/TV technician for help.

Caution: Any changes or modifications to this device not explicitly approved by manufacturer could void your authority to operate this equipment.

This device complies with part 15 of the FCC Rules. Operation is subject to the following two conditions:

(1) This device may not cause harmful interference, and (2) this device must accept any interference received, including interference that may cause undesired operation.

This equipment complies with FCC radiation exposure limits set forth for an uncontrolled environment. This equipment should be installed and operated with minimum distance 0cm between the radiator and your body.