

LED Strip Lights User Guide

THANK YOU for buying this product.To ensure the best lighting experience,please install it according to below instructions and keep this guide for future reference.

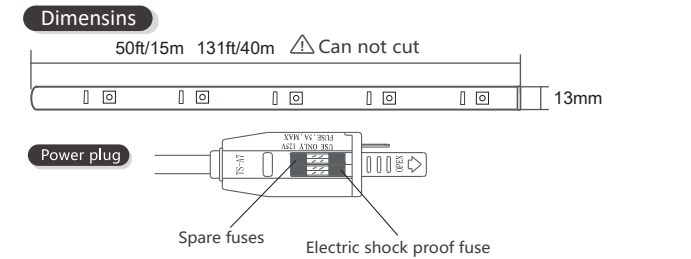
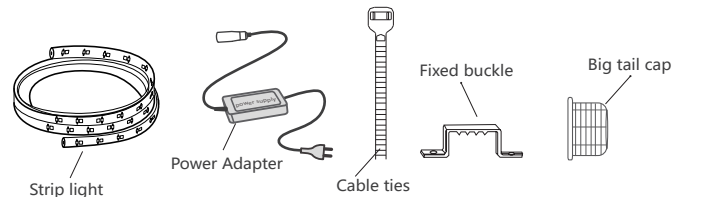
Precautions

- 1.Please check the product carefully before installing.
- 2.Ensure the power is off before wiring and installing.
- 3.Please do not retrofit the product at random.
- 4.The product should be installed in where people cannot reach easily.
- 5.To guarantee the product work normally,please use the included power plugs.
- 6.To prevent the product from burning out due to heat accumulation,please do not fold the product when light up.

Parameter

SKU	Wattage	Voltage	Frequency	Color	Dimmable	IP-Rating	Ta
GT88809-RGB-US	126W/20M	110V	60 Hz	RGB	No	IP65	-25℃ ~40℃
GT88810-RGB-US	80W/15M	110V	60Hz	RGB	No	IP65	-25℃ ~40℃
GT88813-RGB-US	220W/40M	110V	60 Hz	RGB	No	IP65	-25℃ ~40℃

Components and Structure

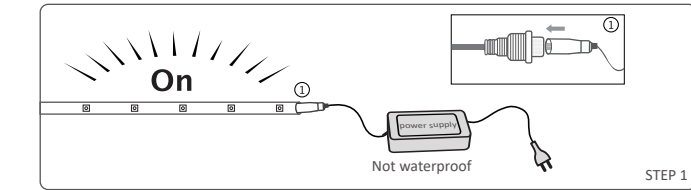


How to install

Method one:

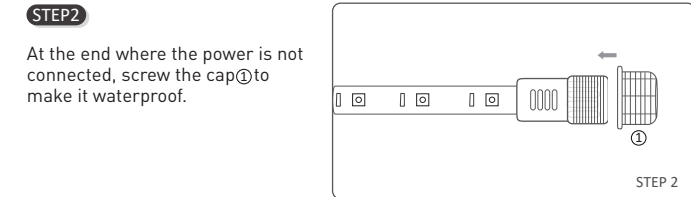
STEP1

Unpack the product and connect a power plug (adapter), then plug in the power to check that the product's functionality is working.



STEP2

At the end where the power is not connected, screw the cap①to make it waterproof.



STEP3

If the product is working normally, please cut off the power supply. Fix the fastening buckle in the mounting position, and then fix the product on it.

STEP4

Connect the power and hide the power plug in the box (not included) or shelter in case of rain. And note (the plug connecting the lamp strip is waterproof)

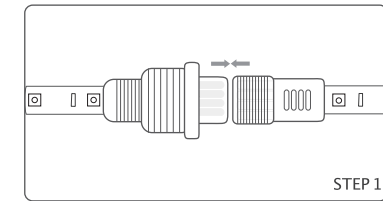
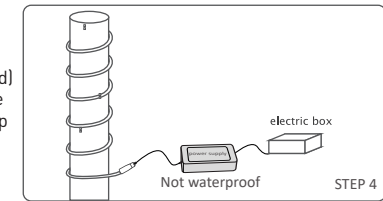
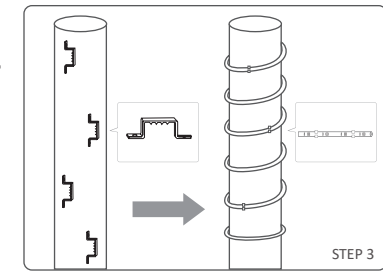
Method two:

STEP1

If you need to increase the product length,please connect its female end to another male end,then tighten the plastic nut to waterproofing.

STEP2

Follow the Method one.



Routine maintenance

1. Ensure lighting, clean led light regularly and check for waterproofing.
2. Make sure the power is switched off before carrying out maintenance work.
3. Please do not use chemical solvent in daily maintenance to avoid damage of led light.

Remote control function explanation

Turn on the power	Turn off the power	
light with a change mode to speed up, the effect can be superimposed;	The light strip change mode becomes slower and the effect can be superimposed;	
Color brightness adjustment: 30%-100% brightness adjustment;	cyclical changes in three colors of red, green and blue (rapid);	
multiple color gradients;	Select a color first, then press the “SHINE1” button, that is, the color flashes;	
7 color cycles change (quickly);	multiple color flicker changes	
multiple colors slowly gradient;	multiple color flicker changes	
Within one minute of turning on the power, press and hold for ⑤ 5s, the color of the light flashes rapidly, that is, the lock code is successful. If you need to re-lock the code, please restart the power.	Within one minute of turning on the power, press and hold for ⑤ 5s, the color of the light flashes rapidly, that is, the decoding is successful. If you need to re-decode, please restart the power.	

FCC Caution:

This device complies with part 15 of the FCC Rules. Operation is subject to the following two conditions: (1) This device may not cause harmful interference, and (2) this device must accept any interference received, including interference that may cause undesired operation.

Any changes or modifications not expressly approved by the party responsible for compliance could void the user's authority to operate the equipment.

NOTE: This equipment has been tested and found to comply with the limits for a Class B digital device, pursuant to Part 15 of the FCC Rules. These limits are designed to provide reasonable protection against harmful interference in a residential installation. This equipment generates, uses and can radiate radio frequency energy and, if not installed and used in accordance with the instructions, may cause harmful interference to radio communications. However, there is no guarantee that interference will not occur in a particular installation.

If this equipment does cause harmful interference to radio or television reception,

which can be determined by turning the equipment off and on, the user is encouraged to try to correct the interference by one or more of the following measures:

- Reorient or relocate the receiving antenna.

- Increase the separation between the equipment and receiver.

- Connect the equipment into an outlet on a circuit different from that to which the receiver is connected.

- Consult the dealer or an experienced radio/TV technician for help.

The device has been evaluated to meet general RF exposure requirement. The device can be used in portable exposure condition without restriction.