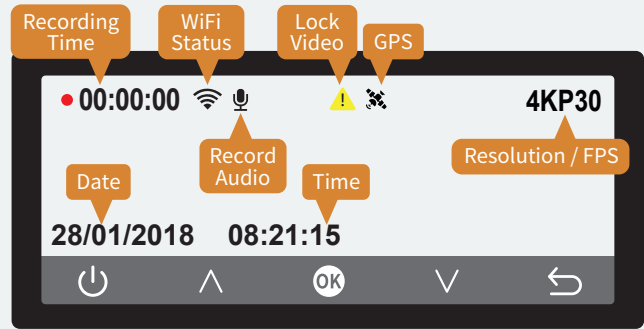


5. FUNCTION OPERATION

5.1 Setup Menu

FUNCTION	OPTIONS	DEFAULT
Video Resolution	Front & Rear (Only Rear support HDR) 4KP30 / 1600P30 / 1440P60 / 1440P30 / 1296P30 / 1080P60 / 1080P30 / 720P120 / 720P60 / 720P30	4KP30+1080P30
	Front Only 4KP30 / 1600P30 / 1440P60 / 1440P30 / 1296P30 / 1080P60 / 1080P30 / 720P120 / 720P60 / 720P30	4KP30
Video Format	TS / MP4	TS
Live Video Source	Front Camera / Rear Camera / Pictue In Picture	Pictue in Picture
Loop Recording	1 / 3 / 5 minutes	1
Date / Time	Manual Time Adjustment	
Time Zone	Set The Corresponding Time Zone	-5
Auto WiFi During Power On	On / Off	Off
APP Download	Scan QR-code To Download APP	
Record Audio	On / Off	On
Volume	Mute / 20% / 40% / 60% / 80% / 100%	80%
Parking Mode	Off / Time Lapse / Event Monitor	Off
G-Sensor	Off / Low / Middle / High Sensitivity	Off
Video Stamp	Date Stamp On / Off	On
	GPS Stamp On / Off	On
Speed Unit	Km/h / Mph	Mph
Video Coding	H.264 / H.265	H.265
Rear Camera Horizontal Flip	On / Off	Off
EV Front	(-1.0 -2/3 -1/3 +0.0 +1/3 +2/3 +1.0)	+0.0
EV Rear	(-1.0 -2/3 -1/3 +0.0 +1/3 +2/3 +1.0)	+0.0
Button Sound	On / Off	On
Screen Off	Off / 1 / 3 minutes	1
Language	English	English
GPS Status	Check GPS Signal Strength	
Format SD Card	All Data Will Be Deleted	
Format SD Card Reminder	Off / 15 / 30 / 60 Days	60 Days
Default	Reset Default Setting	
Firmware Version		

5.2 Screen Layout



5.3 Button operation

MODE	BUTTON	DESCRIPTION
Setting/ Playback		Power On / Off
		Move Up
	OK	Enter / Confirm
		Move down
		Return
Standby/ Recording		Power On / Off
		Record Audio On / Off
		Playback
		Setup Menu
		Short press to change display output Long Press to turn on WiFi
WiFi connected		Power On / Off
		Record Audio On / Off
	SSID	WiFi SSID display On / Off
		Snapshot during recording
		Short press to change display output Long Press to turn off WiFi
LED Indicator	LED Light Signal	Description
	REC	Steady: Standby / Flashing: Recording / Off: Device Off
		Steady: WiFi On / Off: WiFi Off

Android

iOS

6. PRODUCT SPEC

Screen	3.16" LCD
Aperture	Front F1.8 & Rear F1.6
Lens	6 Glass Lens + AR Coating
Wide-Angle	Front & Rear 140°
Sensor	Sony STARVIS sensor
HDR	Rear Camera Only, Always On
Video Resolution	4K+1080P 30fps
Video Format	TS / MP4
Image Format	JPG
Video Coding	H.264 / H.265
EV	Independent front and rear adjustment
Snapshot	Supports snapshot during recording
WiFi	Support 2.4G
Memory Card	Supports up to 256 GB (SanDisk SD cards not recommended)
GPS	Support (Mount)
G-sensor	Support
Microphone	Support
Beep Code	Support
Supercapacitors	Support
Power	USB Type-C 5V 1.5A
Card Reader	DS315WG connects to a PC via USB to serve as a card reader
Parking Monitor	Support (Optional Hardwire Kit required)
Dimension	Front 95 x 80 x 30 mm / 100g
Weight	Rear 52 x 38 x 30 mm / 28g
Material	PC+ABS

7. FAQ & TROUBLE SHOOTING

- 7.1 Memory card cannot display or read :

  - Ensure the memory card used is Class 10 or above.
  - Format the memory card in the device before use.
- 7.2 Failure to power on or freezing :

Check below steps

  - Power cable is working and plugged in properly
  - Car charger light is on
  - Remove the SD card
  - Power on and factory reset the device (if this fixes the problem insert the SD card). If the device still can't power on, please contact our after service.
  - If the problem persists after inserting the SD card, try another SD card.
- 7.3 Automatic recording Stopped during video capture :

  - Check if all recorded videos in playback mode are protected.
  - Ensure that loop recording is set up and format the memory card.
- 7.4 Interference lines on preview screen :

  - Adjust the corresponding frequency (50Hz or 60Hz) based on local power supply frequency.
  - If using a generator, interference lines may be more pronounced, which is normal.
- 7.5 Foggy video capture :

  - Check if there is a protective film on the lens, or if the lens or windshield is not clean.
  - If no issues are found, restart the device.
  - If the problem persists, consult customer service.
- 7.6 Some parts of the rear camera footage show streaky blur

When installing and positioning the rear camera, please avoid aligning it directly with the defrost lines.
- 7.7 No image from the rear camera

When the rear door is opened, the Type-C signal cable might disconnect from the rear camera. Please unplug and replug the signal cable on the side of the rear camera, then restart the Dash Cam.
- 

User Manual

DS315WG + RC-E11

Starlight Night Vision Dash Cam

V1.2

Manufacturer  
NetConn Electronics Co., Ltd

18F-7, No.77, Sec.1, Xintai 5th Rd.,  
Xizhi Dist., New Taipei City 221, Taiwan



## 1. ABOUT THIS MANUAL

The information in this manual is for reference only and is subject to change without notice. The company has made every effort to ensure the accuracy and completeness of this user manual, but assumes no responsibility for any errors or omissions. The manufacturer reserves the right to change technical specifications without prior notice.

**Safety Warning** Do not operate this device while driving, as this may lead to accidents and pose a risk to personal safety.

- Users must comply with local laws and prioritize driving safety; do not operate this device while driving.
- Before using the device, please ensure that the date and time are set correctly.
- It is normal for the device to become warm during use.
- Do not place this product near heat sources or expose it to flames or high temperatures.
- Avoid placing this product near equipments or environments with strong electromagnetic fields, as contact with strong magnetic fields may cause malfunction or data loss.
- This device is for non-commercial use only. To the maximum extent permitted by applicable law, the company is not liable for any loss incurred by the user due to the use of this device.
- Improper use or operation of the product may cause damage to the product or its accessories and void the warranty.

- Install the dashcam in front of the rearview mirror and adjust the rearview mirror to the optimal angle to ensure a good view both front and rear while driving.
- Ensure the lens is within the range of the windshield wipers to maintain good visibility on rainy days.
- The protective film on the lens will affect the recording or photo quality; be sure to remove the protective film from the lens before use.
- Do not touch the lens with your fingers. Oils from your fingers may remain on the lens, causing unclear photos or recordings. Clean the lens regularly.
- Install the dash cam in a location that ensures that the view is not blocked.
- This device is only compatible with the car charger included with the product. Do not use chargers from other brands to avoid damage to the device or battery explosion.

※If not specified in this manual, do not disassemble or modify any accessories or components of this product.

※By using this device, you agree to the above disclaimers.

### FCC Warnings

Any Changes or modifications not expressly approved by the party responsible for compliance could void the user's authority to operate the equipment.

Note: This equipment has been tested and found to comply with the limits for a Class B digital device, pursuant to part 15 of the FCC Rules. These limits are designed to provide reasonable protection against harmful interference in a residential installation. This equipment generates uses and can radiate radio frequency energy and, if not installed and used in accordance with the instructions, may cause harmful interference to radio communications. However, there is no guarantee that interference will not occur in a particular installation. If this equipment does cause harmful interference to radio or television reception, which can be determined by turning the equipment off and on, the user is encouraged to try to correct the interference by one or more of the following measures:

- Reorient or relocate the receiving antenna.
- Increase the separation between the equipment and receiver.
- Connect the equipment into an outlet on a circuit different from that to which the receiver is connected.
- Consult the dealer or an experienced radio/TV technician for help.

This device complies with part 15 of the FCC Rules. Operation is subject to the following two conditions:

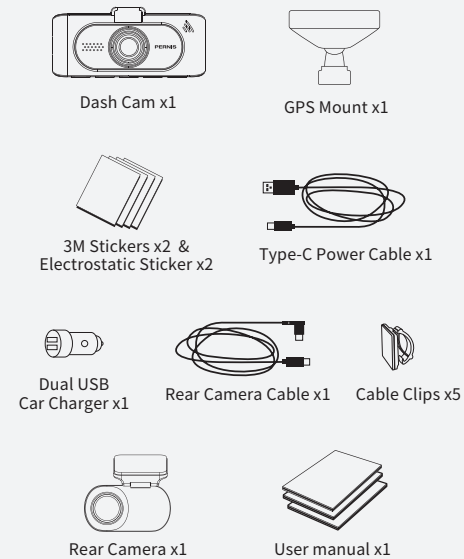
- (1) This device may not cause harmful interference, and (2) this device must accept any interference received, including interference that may cause undesired operation.

This equipment complies with FCC radiation exposure limits set forth for an uncontrolled environment.

This equipment should be installed and operated with minimum distance 20cm between the radiator & your body.

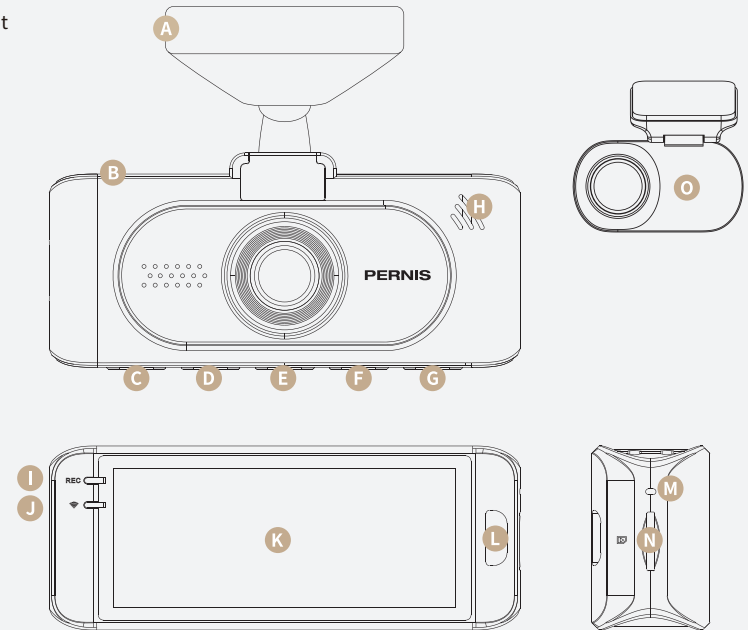
## 2. ACCESSORIES

The following is the packing list. If there are any missing or damaged items, please contact our after service or your dealer immediately. The appearance is subject to the actual contents.



## 3. PRODUCT DIAGRAM

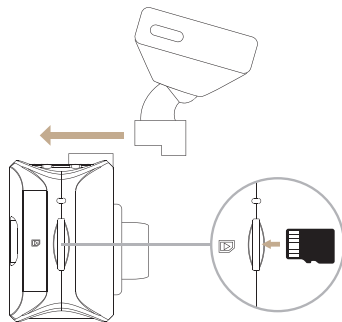
- A USB Type-C Power Slot
- B Rear Cam Slot
- C Back / Switch
- D Down Button
- E Enter / Confirm
- F Up Button
- G Power on / off
- H Buzzer
- I Recording Indicator
- J WiFi Indicator
- K LCD Screen
- L Lock Button
- M Reset Button
- N Micro SD Card Slot
- O Rear Cam



## 4. INSTALLATION

### Step1 Install the GPS Antenna

Attach the GPS mount to the main unit. Before use, insert the memory card into the slot in the correct direction.

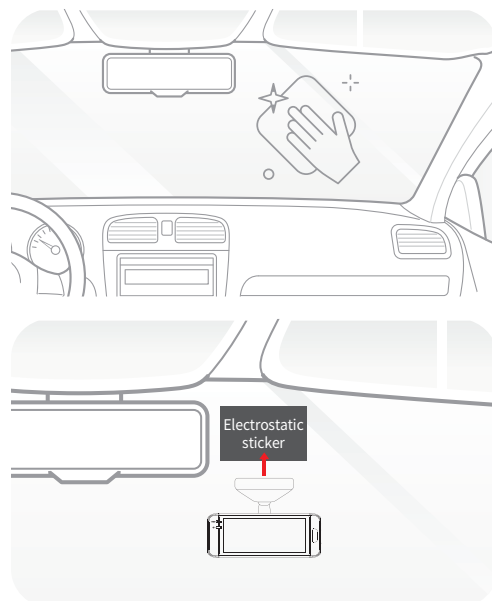


#### Attention:

- Do not remove or insert the memory card while the device is powered on to avoid damaging the memory card.
- Please use a MicroSD card of Class 10 or higher( this device supports up to 256GB)
- Please format the MicroSD card before use.
- When removing the memory card, be careful as it may quickly eject due to the slot's spring mechanism, potentially causing loss of the memory card.
- Please regularly format the memory card.

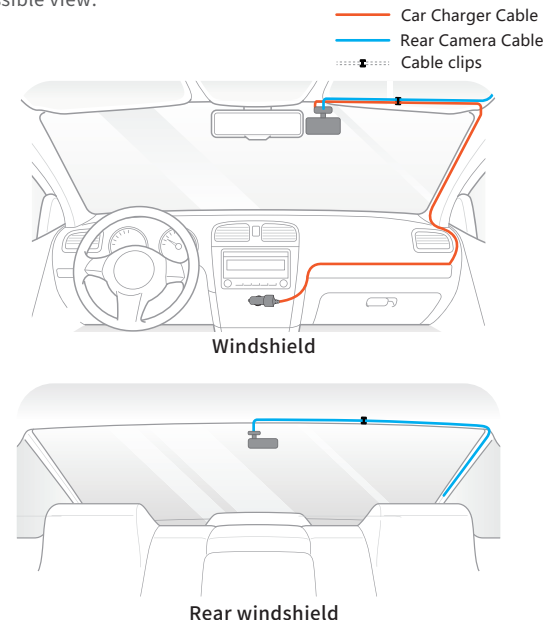
### Step2 Installing the Car Mount

Install the dashcam behind the rearview mirror. Before applying the electrostatic sticker, ensure the windshield is clean. Attach the car mount to the electrostatic sticker, and once attached, your GPS mount installation is complete.



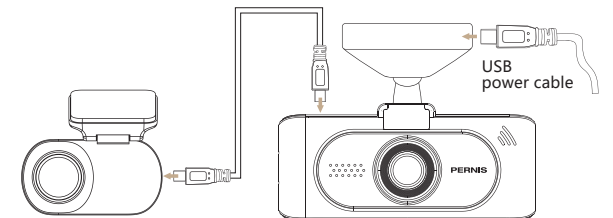
### Step3 Installing the dashcam and rear camera

Install the rear camera at the top of the rear windshield. Before installation, ensure the windshield is clean and dry. Choose a suitable position for the camera and ensure it has the best possible view.



### Step4 Connect cable

Install the car charger into the vehicle's cigarette lighter socket, and connect the USB cable to the dashcam's power port to provide power.



### Step5 Adjusting the camera angle

Adjust the camera angle by adjusting the main unit's tilt angle.

