

Contact us

Thank you for choosing Tinewa. If you have any questions or suggestions, please contact us:
Email: service@tinewa.com
Website: <http://www.tinewa.com>

User Guide

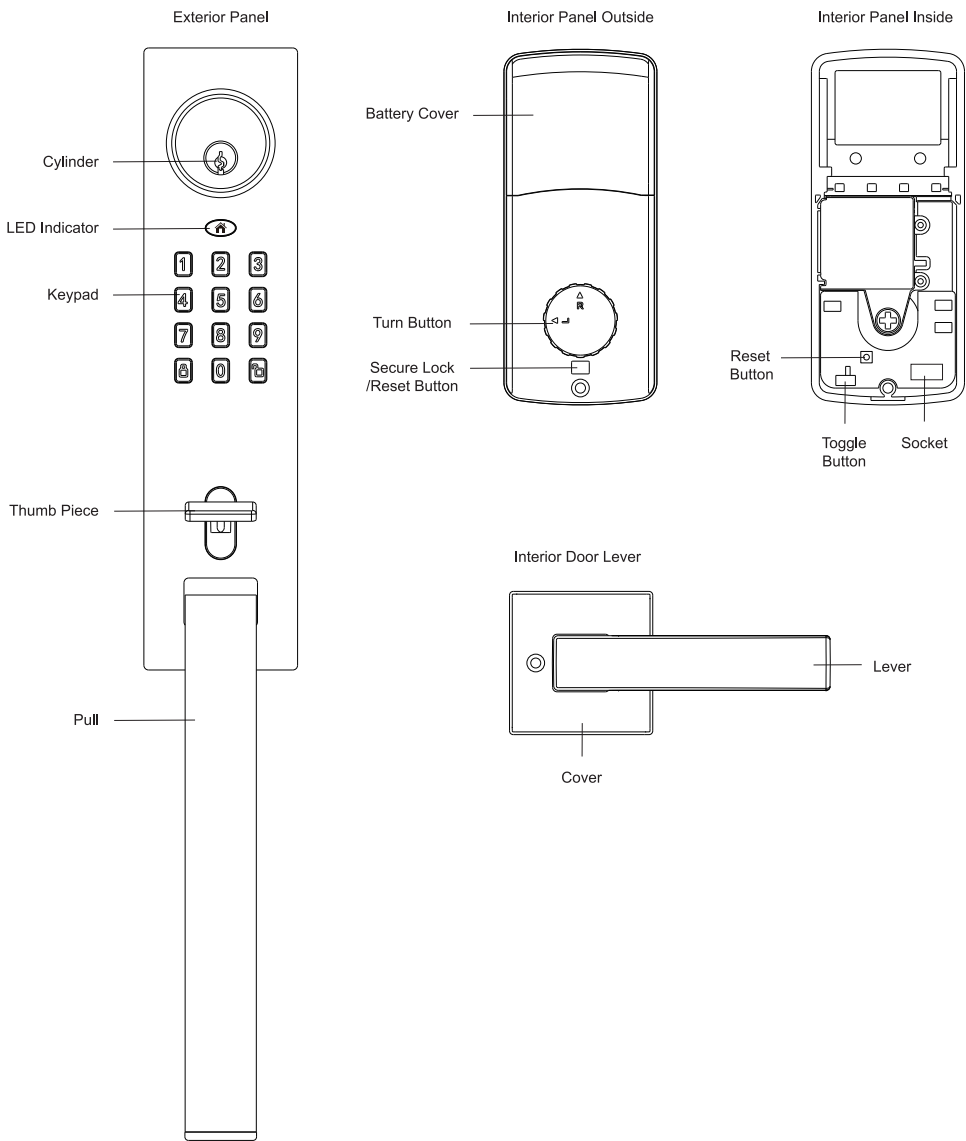
Model:DLE9901

Table of Contents


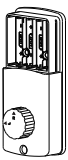
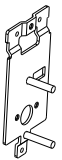
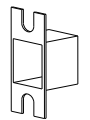
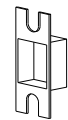
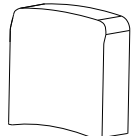




Getting Started	02
Product Description	02
Parts in the Box	03
Assembly Diagram	04
Lock/Unlock	05
Operation Instructions	06
Drill Holes	06
Installation	07
App Operation Guide	13
Keypad Programming	16
Outstanding Functions	17
FQA	19
Contact Us	26
FCC WARNING	27

Getting Started

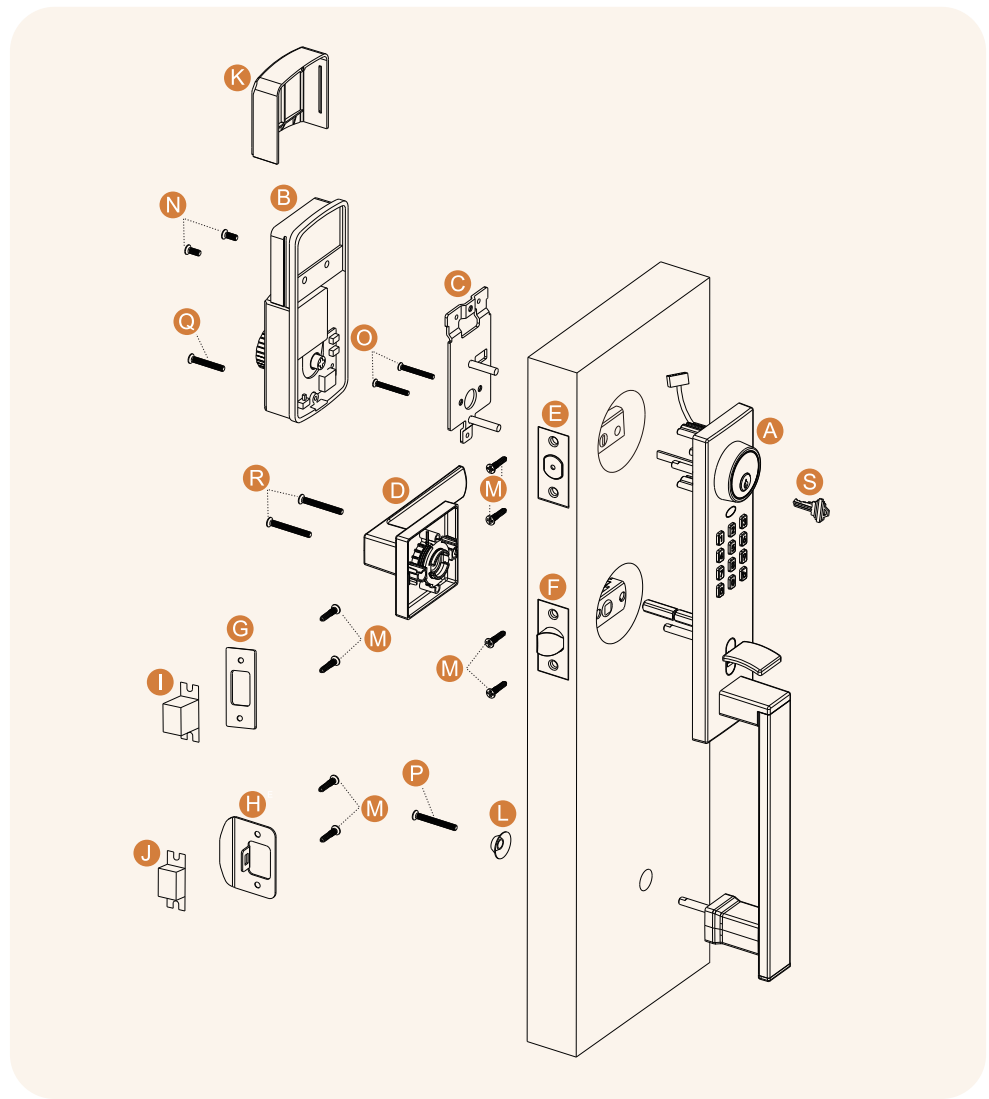
Product Description



Parts In the Box

<div>A</div>  <p>Exterior Panel</p>	<div>B</div>  <p>Interior Panel</p>	<div>C</div>  <p>Mounting Plate</p>	<div>D</div>  <p>Interior Door Lever</p>
<div>E</div>  <p>Dead Bolt</p>	<div>F</div>  <p>Latch Bolt</p>	<div>G</div>  <p>Striking Plate A (use for Dead Bolt)</p>	<div>H</div>  <p>Striking Plate B (use for Latch Bolt)</p>
<div>I</div>  <p>Striking Plate Box A (use for Dead Bolt)</p>	<div>J</div>  <p>Striking Plate Box B (use for Latch Bolt)</p>	<div>K</div>  <p>Battery Cover</p>	<div>L</div>  <p>Gasket</p>
<div>M</div>  <p>Screw A(20mm) 8pcs</p>	<div>N</div>  <p>Screw B(8mm) 2pcs</p>	<div>O</div>  <p>Screw C(30mm) 2pcs</p>	<div>P</div>  <p>Screw D(35mm) 1pc</p>
<div>Q</div>  <p>Screw E(25mm) 1pc</p>	<div>R</div>  <p>Screw F(35mm) 2pcs</p>	<div>S</div>  <p>Keys 3pcs</p>	 <p>Template</p>

Assembly Diagram

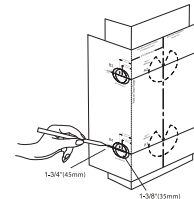


Lock/Unlock

Operation Instructions

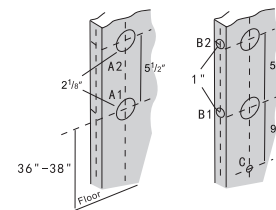
Drill Holes

(For pre-drilled door, or replacement, please use the template to check your door dimensions.)



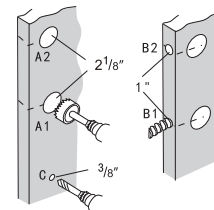
Note: Applicable door thickness: 35~45mm

Fold the template at the dotted line and tape the template to the interior side of the door at 34\"~48\" Height.

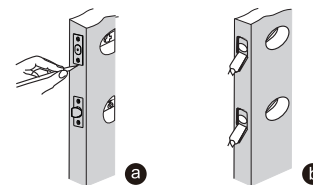


- Mark the $2\frac{3}{8}$ " or $2\frac{3}{4}$ " (60 or 70mm) hole center as A1 for the backset.
- Mark a point as A2, $5\frac{1}{2}$ " above A1.
- Mark a point as C, about 9" below A1.
- Measure the thickness of the door and mark the middle point of the door thickness as B1.
- Mark a point as B2, $5\frac{1}{2}$ " above B1.

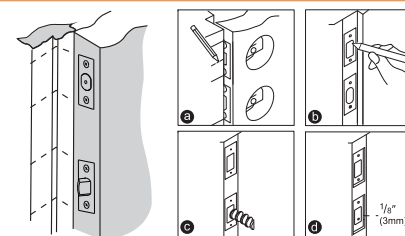
Note: Make sure the A1 and B1(A2 and B2) are at the same height.



- Drill two Dia. $2\frac{1}{8}$ " holes for the lock bodies at point A1 and A2.
- Drill two Dia. 1" holes for the latches at point B1 and B2.
- Drill a Dia. $\frac{3}{8}$ " hole for the connecting column at point C.



- Insert the latches into the holes and mark the outline of faceplates.
- Chisel $\frac{1}{8}$ " deep holes.



- Close the door with the latch installed and mark lines on the jamb as picture shown left.
- Align the striking plates with the lines. Draw the shape of striking plates.
- Drill 1" deep hole in the middle of the striking plates.
- Chisel $\frac{1}{8}$ " deep for the striking plates.



LOCK

Keypad
()

App

Keys

Auto-lock

UNLOCK

Keypad
(Passcode+

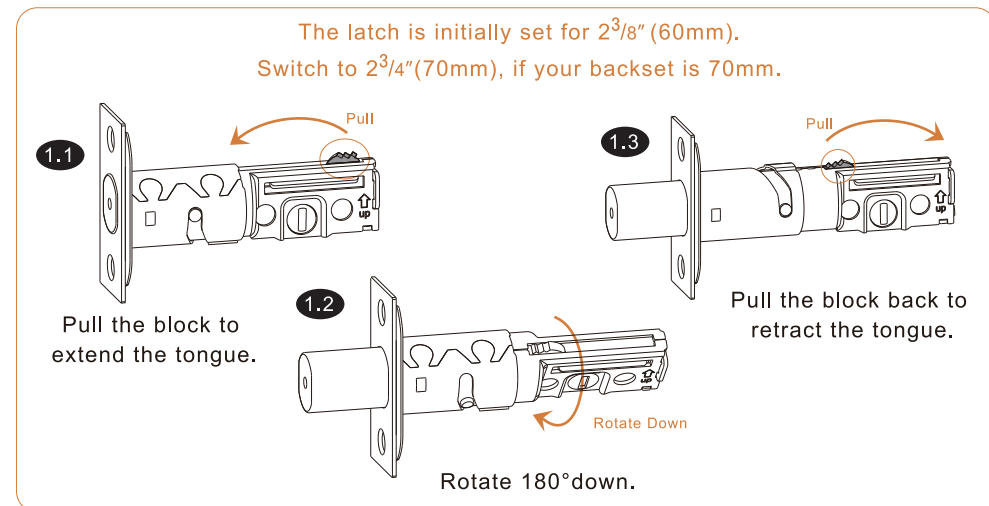
App

Keys

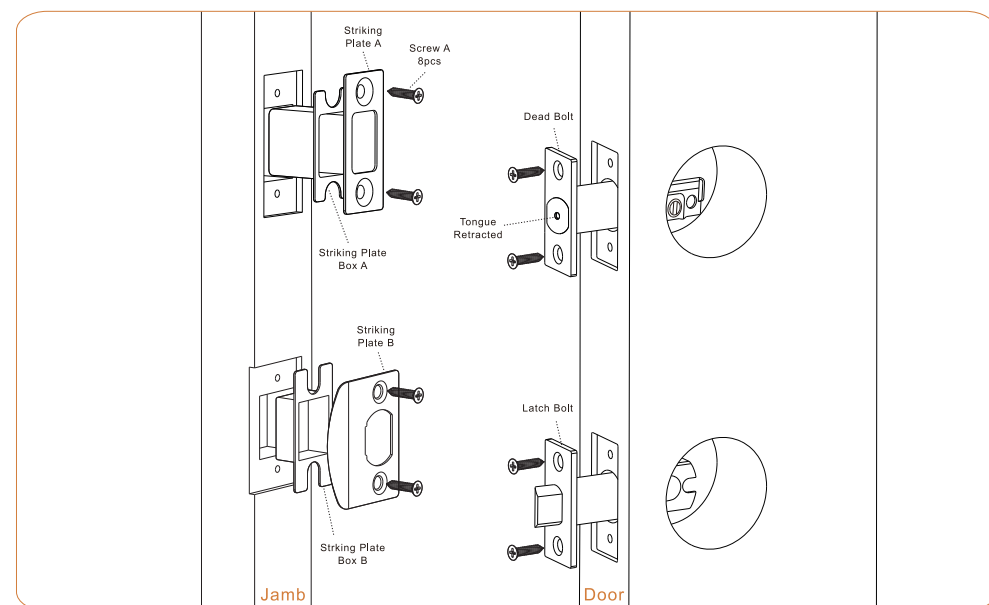
Installation

Note: Keep the bolt retracted in the following steps

1.Adjust the Dead Bolt



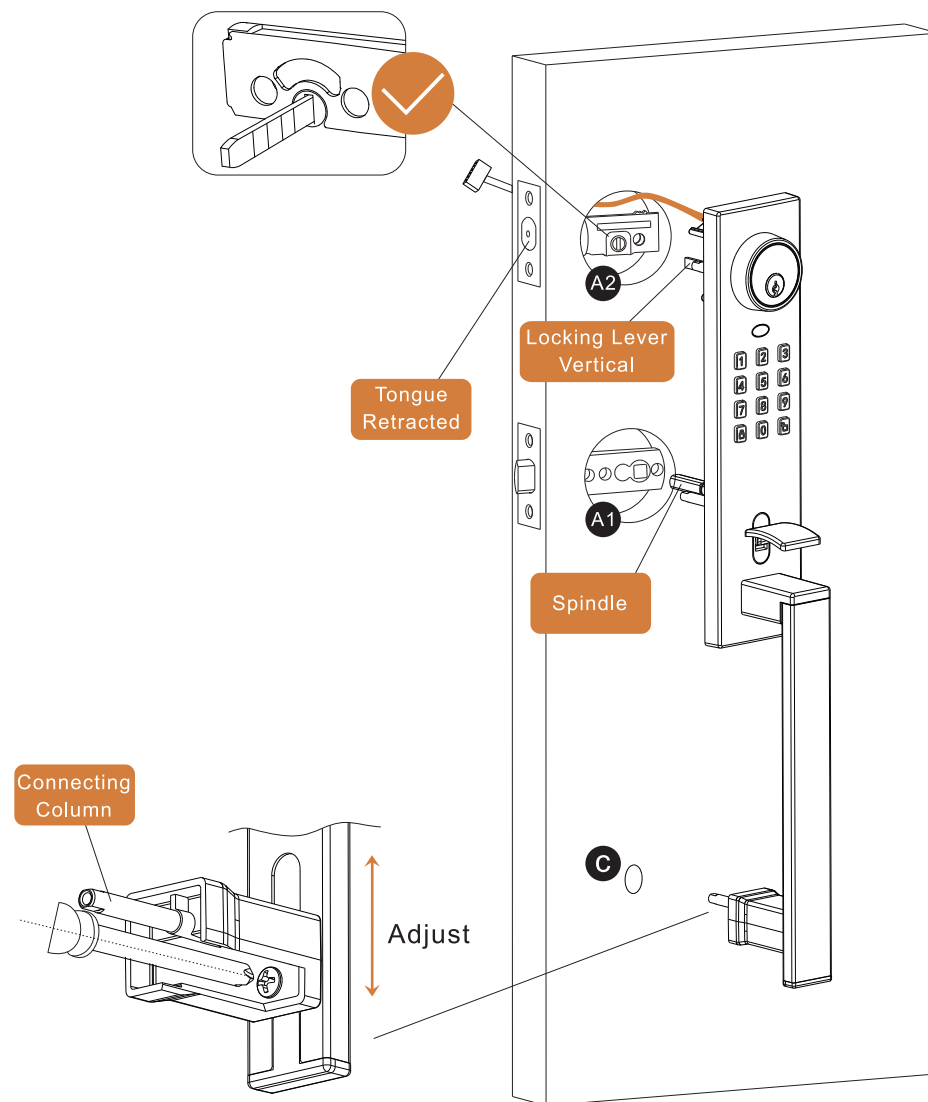
2.Install the Latches and Striking Plates



3.Install Exterior Lock

Individually align Locking Lever, Spindle and Connecting Column with Point A2, A1 and C.

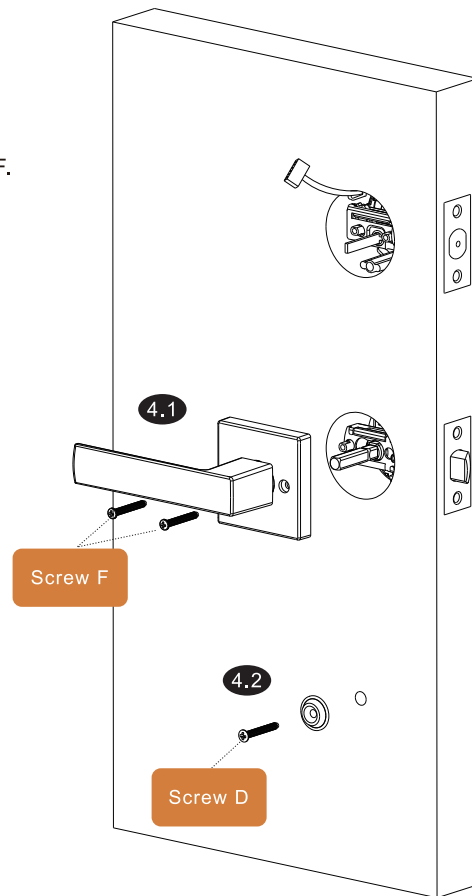
Note: Loosen the screw to adjust the connecting column if needed.



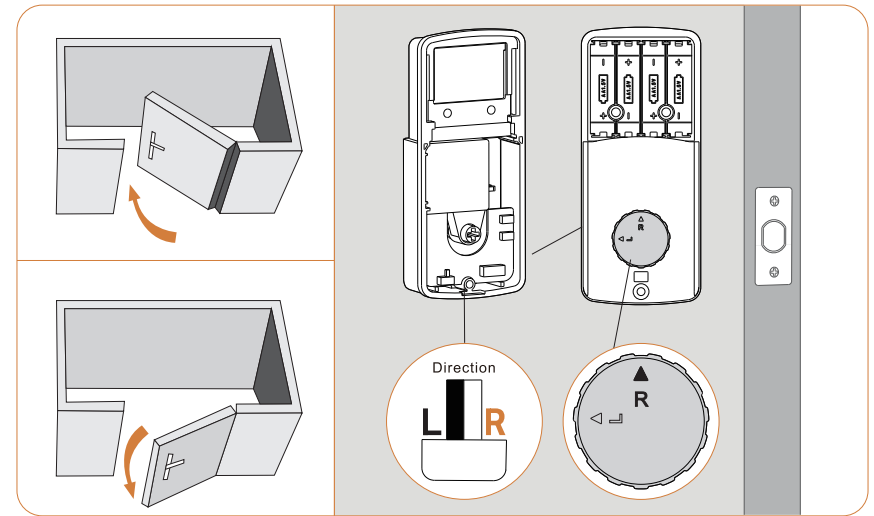
4.Install Interior Door Lever

4.1 Secure the door lever with Screw F.

4.2 Secure the gasket with Screw D.

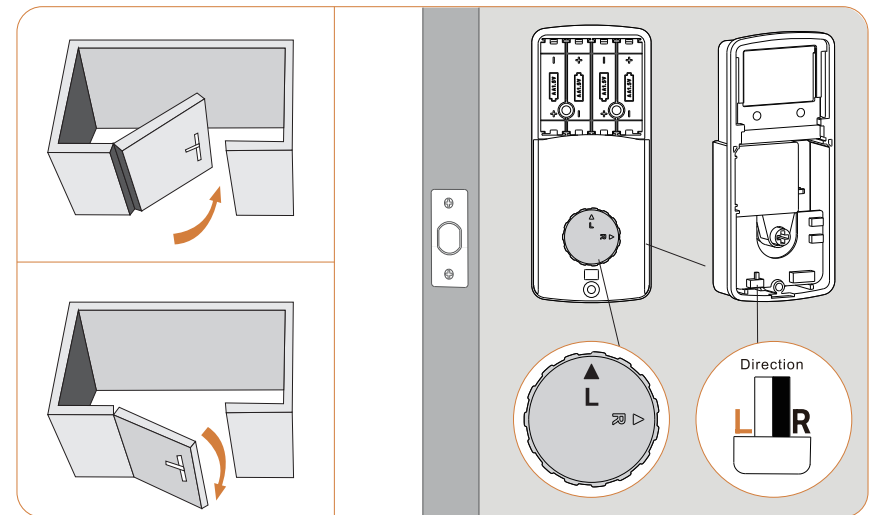


5.Check the Door Opening Direction



Right-handle

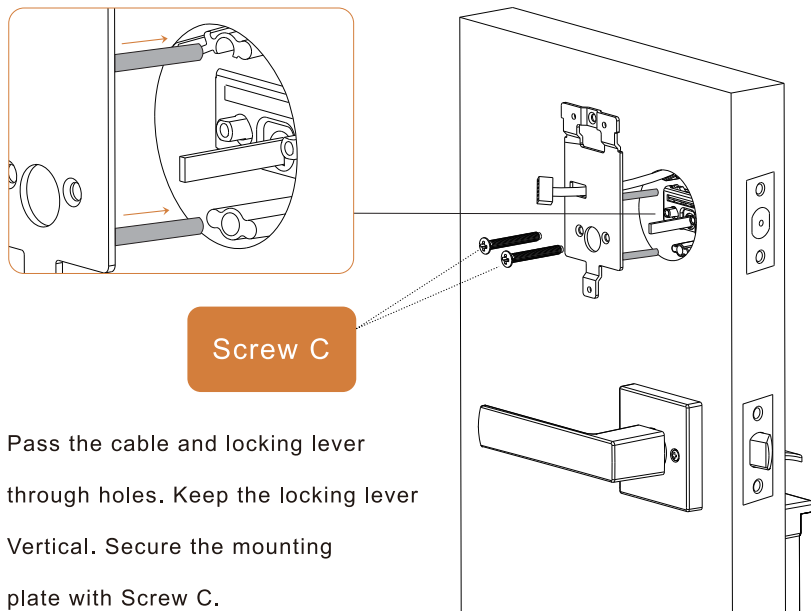
Turn the turn button to **R**.
Switch the toggle to **R**.



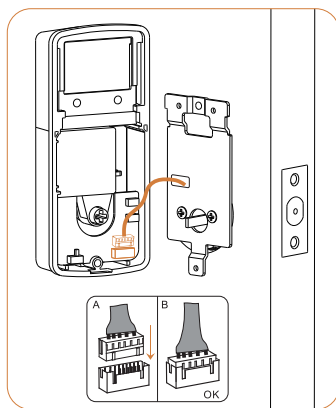
Left-handle

Turn the turn button to **L**.
Switch the toggle to **L**.

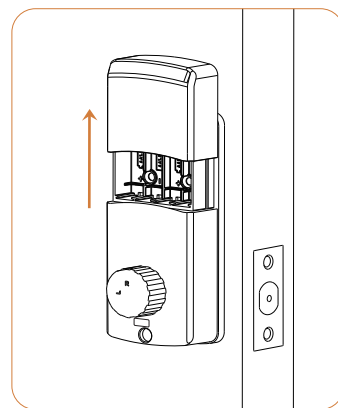
6. Install Interior Panel



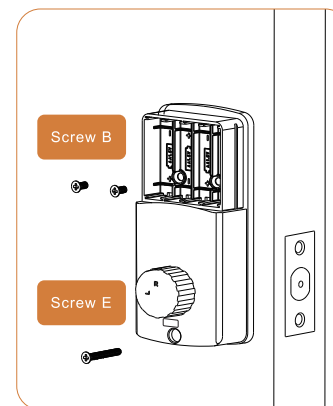
- 6.1** Pass the cable and locking lever through holes. Keep the locking lever Vertical. Secure the mounting plate with Screw C.



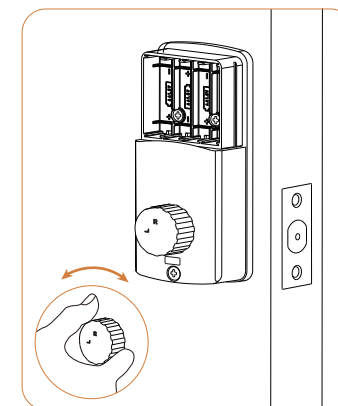
- 6.2** Insert the cable connector to the socket.



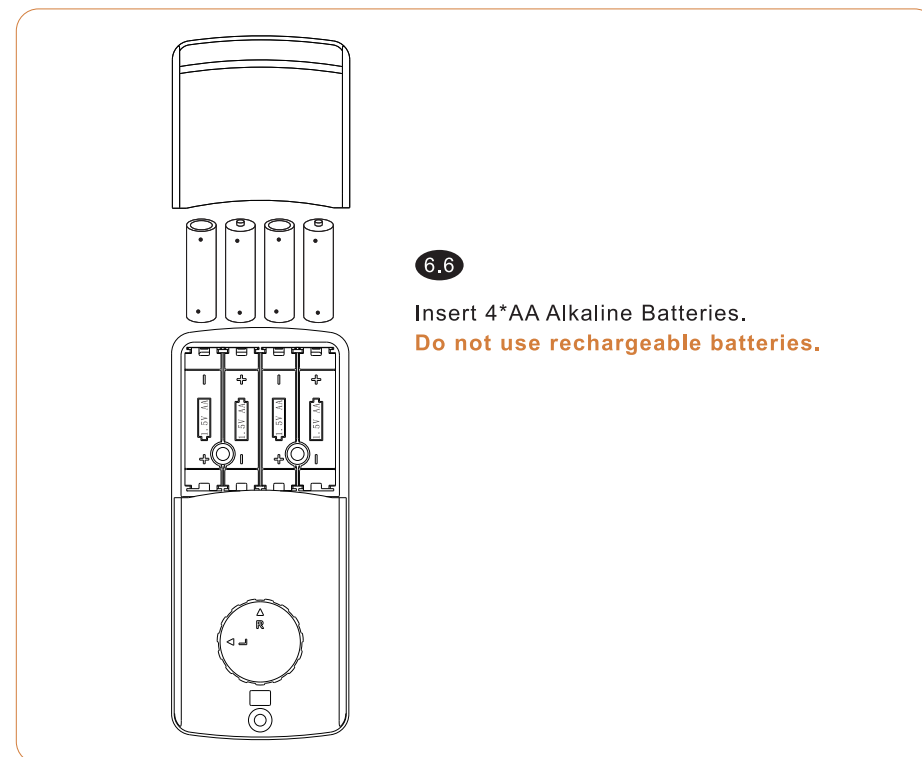
- 6.3** Remove the battery cover.



- 6.4** Secure the interior panel with Screw B and Screw E.



- 6.5** Turn the turn button and check whether it works.



App Operation Guide

We recommend using app because it's easier to set and more convenient for future use. If you Prefer Keypad Programming, please skip to page 16.

• Download Tinewa App

Option1: Search “Tinewa” in App Store for iPhone / in Google Play Store for Android and download it.

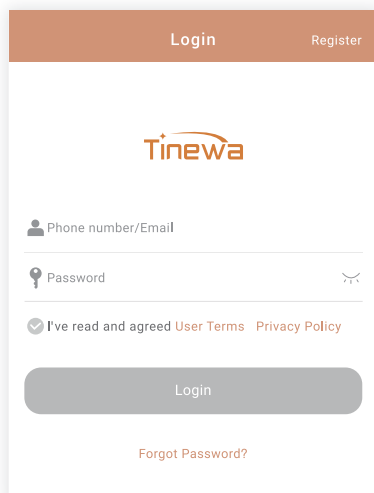
Option2: Scan the QR code below to download Tinewa, for both iOS(iOS 7.0 above) and Android(Android 4.3 above) system.



• Turn on the Phone 's Bluetooth and keep your phone close by the lock during the following steps.

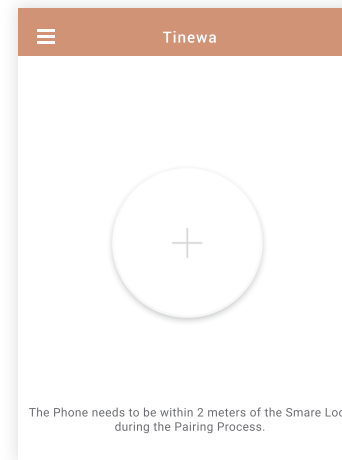
• Register and Log in

At the top right of the screen, tap “Register” as shown in the picture to register. You can use Email or Phone Number to sign up for a Tinewa account.



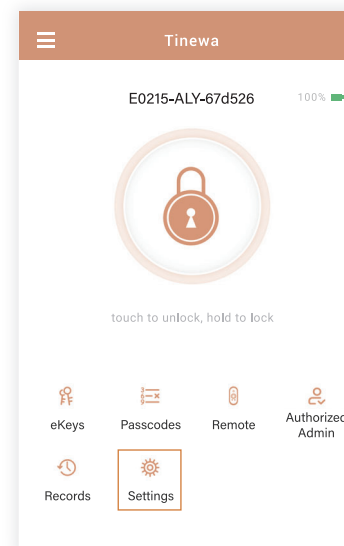
• Connect Smart Lock to Tinewa App

Tap the “+” button → Door Lock → Next → Select your Lock and tap“+”on right → Name Your Lock → OK → Select Door Opening Direction → OK



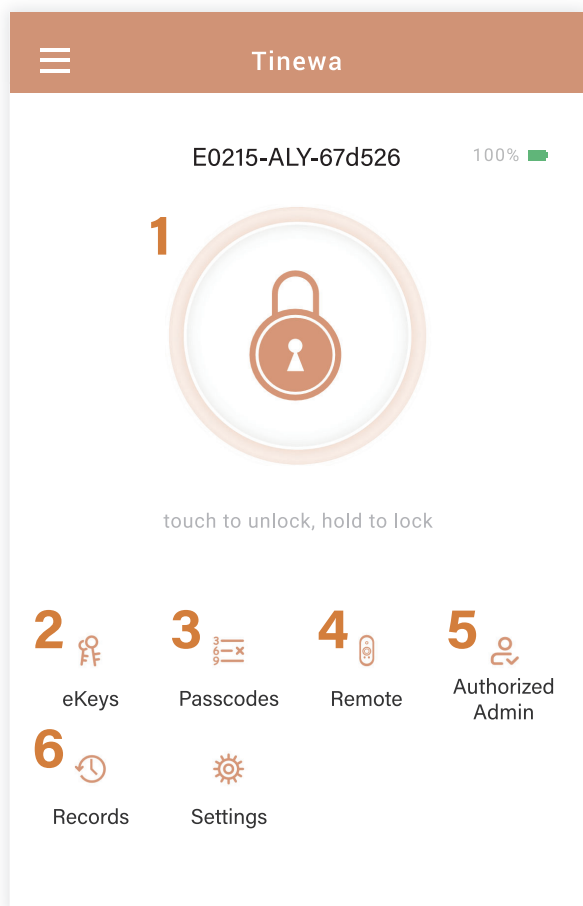
• Change your Administrator Passcode

Settings → Basics → Admin Passcode → Passcode



• App Function Introduction

- 1.Lock/Unlock: Touch to unlock, hold to lock. Please follow the steps in App.
- 2.eKeys: After registration recipients are able to Lock/Unlock by Tinewa App. Please follow the steps in App.
- 3.Passcodes: Generate or Customize Timed/Permanent/One-time/Recurring Passcodes. Please follow the steps in App.
- 4.Remote: Lock/Unlock remotely by the remote control. Please follow the steps in App. (Purchase the remote control separately.)
- 5.Authorized Admin: The authorized administrator will have majority permission to operate this lock. Please seriously. Please follow the steps in App.
- 6.Records: It records the operations through App and Keypad(Keys will not included)



Keypad Programming

- **Change Admin Passcode(4-9 digits Initial Admin Passcode: 123456)**
🔒 → 12 → 🔑 → Current Admin Passcode → 🔑 → New Admin Passcode → 🔑 → New Admin Passcode → 🔑 → Succeed
- **Add User Passcode(4-9 digits)**
🔒 → 85 → 🔑 → Admin Passcode → 🔑 → New User Passcode → 🔑 → New User Passcode → 🔑 → Succeed
- **Lock/Unlock**
Long press 🔒 2s to Lock
Press Admin Passcode/User Passcode → 🔑 to Unlock
- **Change User Passcode**
🔒 → 10 → 🔑 → Current User Passcode(the one you want to change) → 🔑 → New User Passcode → 🔑 → New User Passcode → 🔑 → Succeed
- **Delete All User Passcodes**
🔒 → 71 → 🔑 → Admin Passcode → 🔑 → Succeed
Note: Except Admin passcode, ALL user passcodes will be deleted.

Outstanding Functions

1.Diversified Unlock Permissions

Grant specific permissions according to usage scenarios

- 1.1 Permanent: eKeys/Passcodes applicable. Grant permanent access.
- 1.2 Timed: eKeys/Passcodes applicable. Grant access for a few weeks, a few hours, or a few minutes.
- 1.3 One-time: Passcodes applicable. Grant access for only once.
- 1.4 Recurring: eKeys applicable. Grant access for fixed time period of every day, every week or every month.
- 1.5 Custom: Passcodes applicable. Generate customized passcodes.

2Automatic Locking

The latch will automatically pop out for locking after you close the door. Without any additional operation.

Operation: *Settings→Auto Lock(5-60s, Customize)*

3.Door Closing Reminder

After adding a door sensor, you will receive a voice alarm from the lock when you forget to close the door. And the latch will automatically pop out for locking after you close the door.

(NOTE: Purchase the door sensor separately.)

4.Adjustable Lock Sound

Choose to turn on or off the prompt tone according to your needs.

Operation: *Settings-Lock Sound*

5.Monitor Activity Remotely

You can receive unlock reminder(sound/notificaton) remotely or view the unlock record remotely when users use the eKeys to unlock. If you also want this function for other unlocking methods, an additional gateway is required.

Operation: *Settings-Unlock Notification/Messages*

6.Manage Access Real Time

You can generate passcodes and refresh records remotely. You are also allowed to unlock remotely by turning on the Remote Unlock.

Operation: *Gateway/Settings-Remote Unlock*

(NOTE: Purchase the Gateway separately.)

7.Anti-peep Passcode

Add random digits to protect your passcode from prying eyes.

Operation: *No extra setting. Just enter random digits before or/and after the true passcode*

(NOTE: Total length should less than 16 digits.)

example: 765(random number)+ 112233(true passcode) + 4899(random number)

8.System Locked Automatically for Security

The lock system will be temporarily locked, if somebody enter incorrect passcode FIVE times. In this case, you can only unlock with the Tinewa App or wait 3 minutes.

9.Secure Lock

Press the Secure Lock Button for 3 seconds to activate Secure Mode. When the Secure Mode is ON, only Administrator Passcode and Keys can unlock the door from the outside.

10.Low Battery Warning

(a) In the battery low status, there will be a voice reminder while the keypad activated.

(b) The battery percentage can be viewed in the Tinewa App. The icon will turn red when the percentage under 20%.

11.Ready For All Weathers

With an IP65 waterproof rating, Smart Lock built to withstand low and high temperature (-4°F ~158°F).

12.Multiple Locks Management

You are allowed to manage variety of Tinewa smart locks by Tinewa App.

Operation: *Add Lock.*

13.Multilingual Support

Tinewa App offers multilingual support.

Operation: *App Settings-Languages.*

14.One Click Transfer

Transfer all data of the selected lock(s) to the recipient permanently. In this case, you don't need to reset the lock if the administrator of the lock changes.

Operation: *App Settings-Transfer Lock(s)*

15.eKeys/Passcodes Management

You can rename eKey/Passcode, delete it, change the validity period and passcode in the Info page.

You are allowed to delete passcode , and change passcode on the keypad as well. For details, please refer to Keypad Programming.

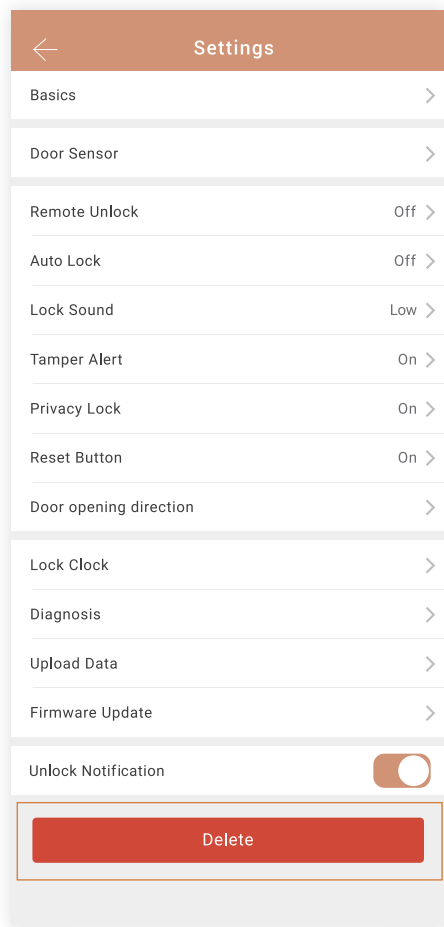
Operation: *eKeys/Passcodes*

FAQ

1.How to reset the lock?

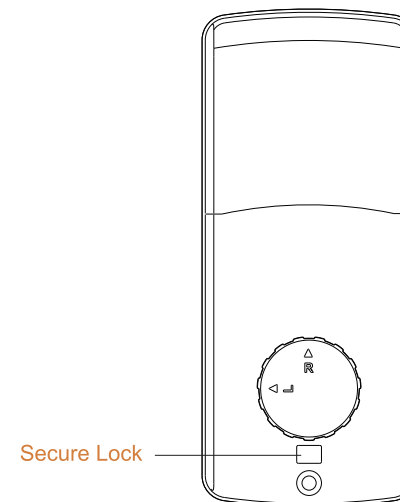
Method 1:

If you are a Tinewa Bluetooth Administrator, in the Settings, you can delete the lock from your account.



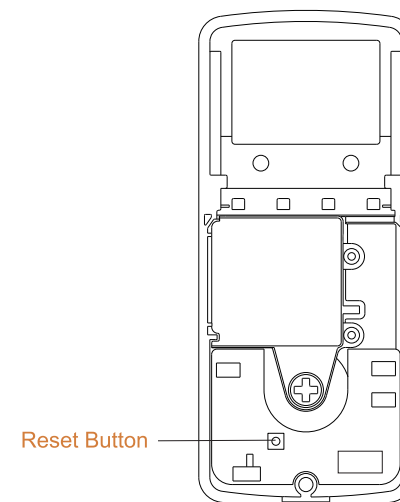
Method 2:

- (a) Take out a battery for 5 seconds.
- (b) Put it back and press the Secure Lock Button for 10 seconds immediately.
- (c) The lock will beep twice when it reset successfully.



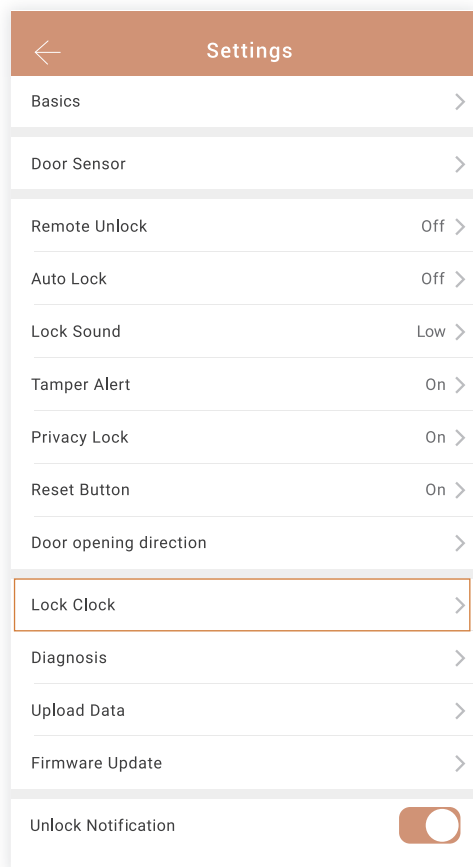
Method 3:

- (a) Take out batteries and disassemble the Interior Panel.
- (b) Power on again and press the Reset Button for 3 seconds.
- (c) The lock will beep twice when it reset successfully.



2. I set a timed passcode/eKey between 13:00 - 17:00, but it still works at 18:00.

Under this circumstance, please calibrate the lock time via Lock Clock.

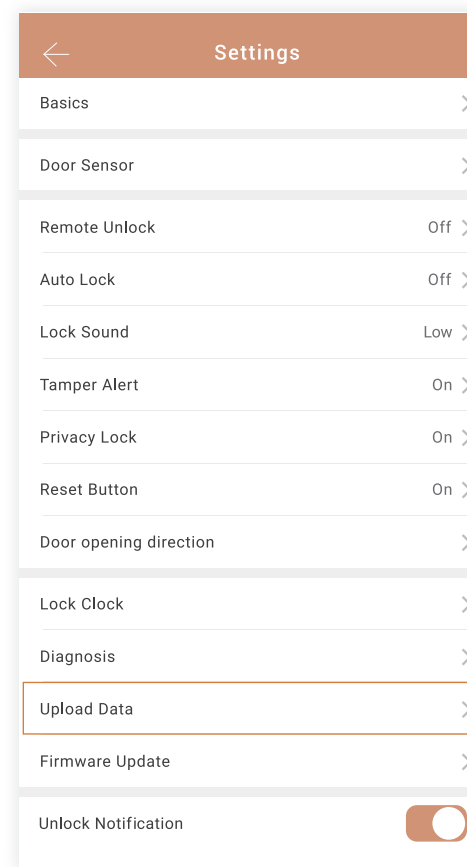


3. Why the Record Page didn't show all lock/unlock records?

If the records didn't update in a timely manner, you can refresh records at up right near the lock. You have to connect a gateway, if you want to receive the records remotely.

4. Why the passcodes I set on the Keypad doesn't show in my Tinewa App?

In this case, please upload data from lock to App. It may take several minutes, please be patient.

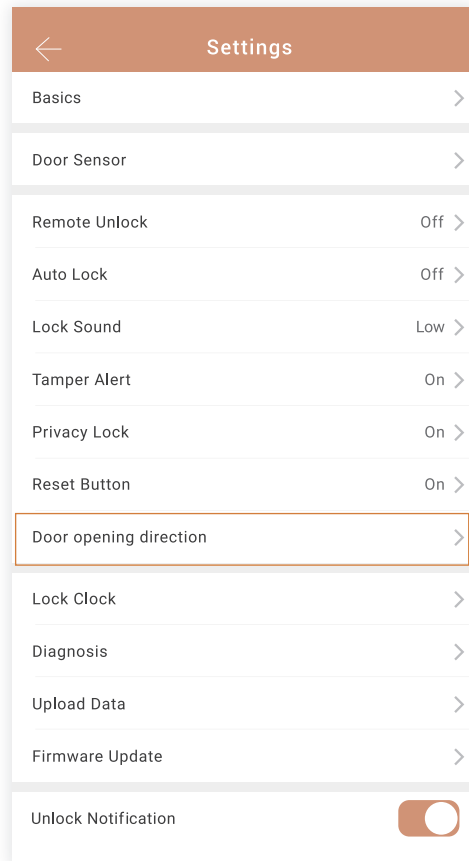


5. Why my lock appears to look locked, when it is not? (Lock Mechanism Backwards)

If your door opening direction is wrong, your lock mechanism will be opposite.

Method 1:

You can change the opening direction in the Settings



Method 2:

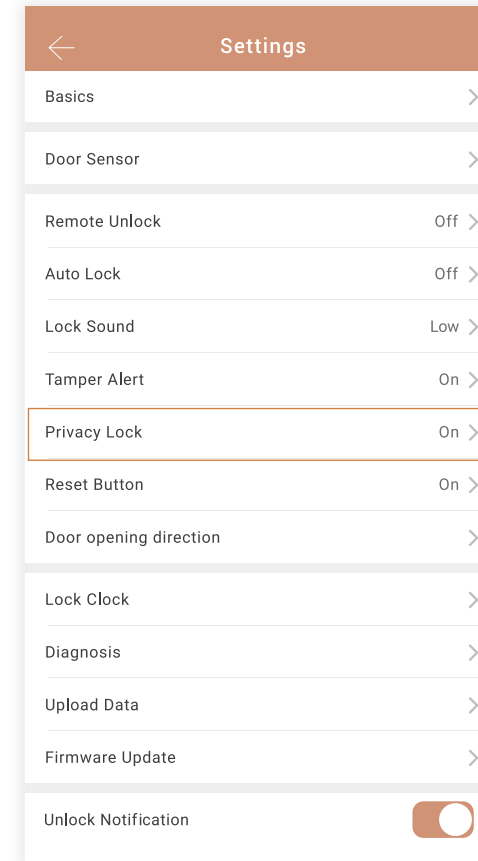
You can change the opening direction on the Keypad

Left-handle: → 46 → → Admin Passcode → → 1 →

Right-handle: → 46 → → Admin Passcode → → 2 →

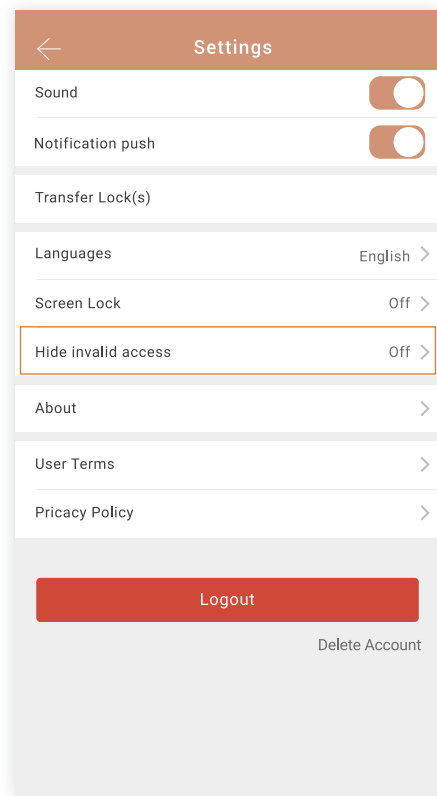
6. Why the Secure Lock Button doesn't work?

Check the Privacy Lock Function in the Settings. The Secure Lock Button is disabled when Privacy Lock is OFF.



7.Invalid passcodes/eKeys are so annoying,but I don't want to delete them or it's too much hassle to delete them one by one.

Under this situation, you can turn on the Hide Invalid Access in App Setting.



8.Why I can't pair my Lock with the App?

Step 1: Ensure you have turn on your phone' s Bluetooth.

Step 2: Press any buttons on the keypad to activate it.

Step 3: If you have set the Administrator Passcode on the Keypad already, the Lock would be absent on the App. In this case, please press → 83 → → Admin Passcode → on the Keypad, then tap the “+” button.

Specifications

Material	Exterior Panel	Zinc Alloy
	Interior Panel	ABS
	Interior Door Lever	Zinc Alloy
Unlock Method	APP, Passcode , Key	
Working Temperature	Interior Panel	14°F ~ 122°F
	Exterior Panel	-4°F ~ 158°F
Working Humidity	20% ~ 95%	
Support Phone System	Android 4.3 / IOS 7.0 or above	
Mobile phone app	Tinewa App	
Passcode	Passcode digits	4-9 digits
	Passcode capacity	100 pcs
Waterproof	IP65	
Battery	4*AA(NOT provided)	
Door	Applicable Door Type	Metal or Wood
	Applicable Door Thickness	1 ³ / ₈ " or 1 ³ / ₄ " (35~45mm)

FCC WARNING

This device complies with part 15 of the FCC Rules. Operation is subject to the following two conditions:

- (1) this device may not cause harmful interference, and
- (2) this device must accept any interference received, including interference that may cause undesired operation.

Any changes or modifications not expressly approved by the party responsible for compliance could void the user's authority to operate the equipment.

NOTE: This equipment has been tested and found to comply with the limits for a Class B digital device, pursuant to Part 15 of the FCC Rules. These limits are designed to provide reasonable protection against harmful interference in a residential installation. This equipment generates, uses and can radiate radio frequency energy and, if not installed and used in accordance with the instructions, may cause harmful interference to radio communications.

However, there is no guarantee that interference will not occur in a particular installation. If this equipment does cause harmful interference to radio or television reception, which can be determined by turning the equipment off and on, the user is encouraged to try to correct the interference by one or more of the following measures:

- Reorient or relocate the receiving antenna.
 - Increase the separation between the equipment and receiver.
 - Connect the equipment into an outlet on a circuit different from that to which the receiver is connected.
 - Consult the dealer or an experienced radio/TV technician for help.
- To maintain compliance with FCC's RF Exposure guidelines, This equipment should be installed and operated with minimum 20cm distance between the radiator and your body. Use only the supplied antenna.